

Solar Arch by fnnch

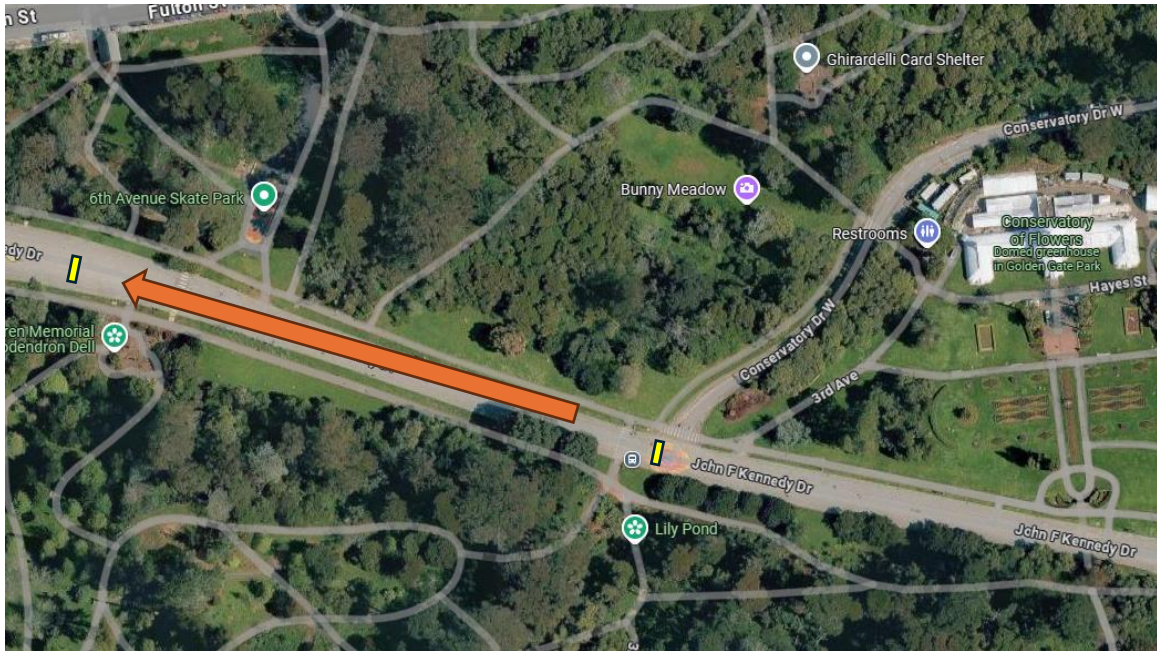
Golden Gate Park, San Francisco

Request to shift temporary installation location.

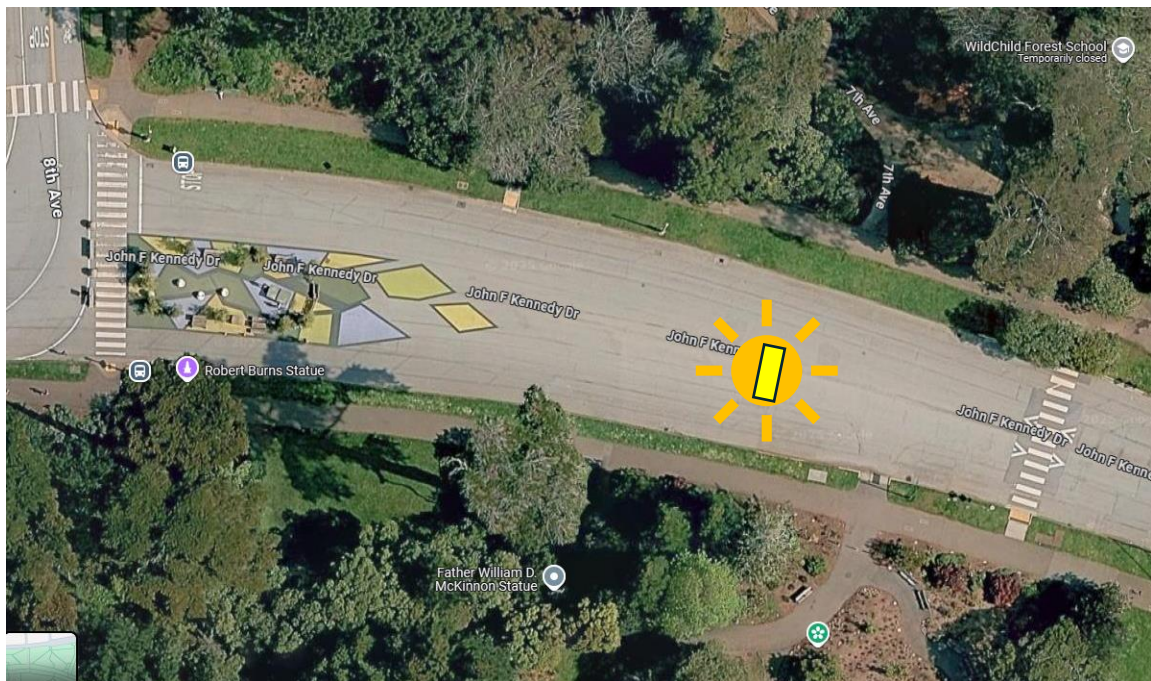
Solar Arch, by San Francisco artist fnnch, is a 26-foot-wide, 13-foot-tall arch with solar panels on the exterior that gather energy from the sun each day to power the interior panels of light each evening. The current location of the arch is Conservatory Drive East and the JFK Promenade in Golden Gate Park.



The San Francisco Arts Commission approved shifting the location of the Solar Arch from Conservatory Drive East to Conservatory Drive West on June 2nd, to accommodate the installation of sculptures by Betsabee Romero. In response to concerns about the intersection of Conservatory Drive West and JFK Promenade due to pedestrian traffic and service vehicles, we request an updated installation location approximately 700 feet West, on JFK Promenade, adjacent to the John McLaren Rhododendron Dell.



The updated proposal is to relocate the temporary Solar Arch from its current position on JFK Promenade at Conservatory Drive West, approximately 700 feet closer to the intersection of JFK Promenade and 8th Avenue.



The new location for Solar Arch will allow 21 feet of clearance on each side of the sculpture for the Golden Gate Park shuttle, pedestrian traffic, and emergency vehicles.

Joel Riddell, Assistant Director of Partnerships,
San Francisco Recreation and Park Department