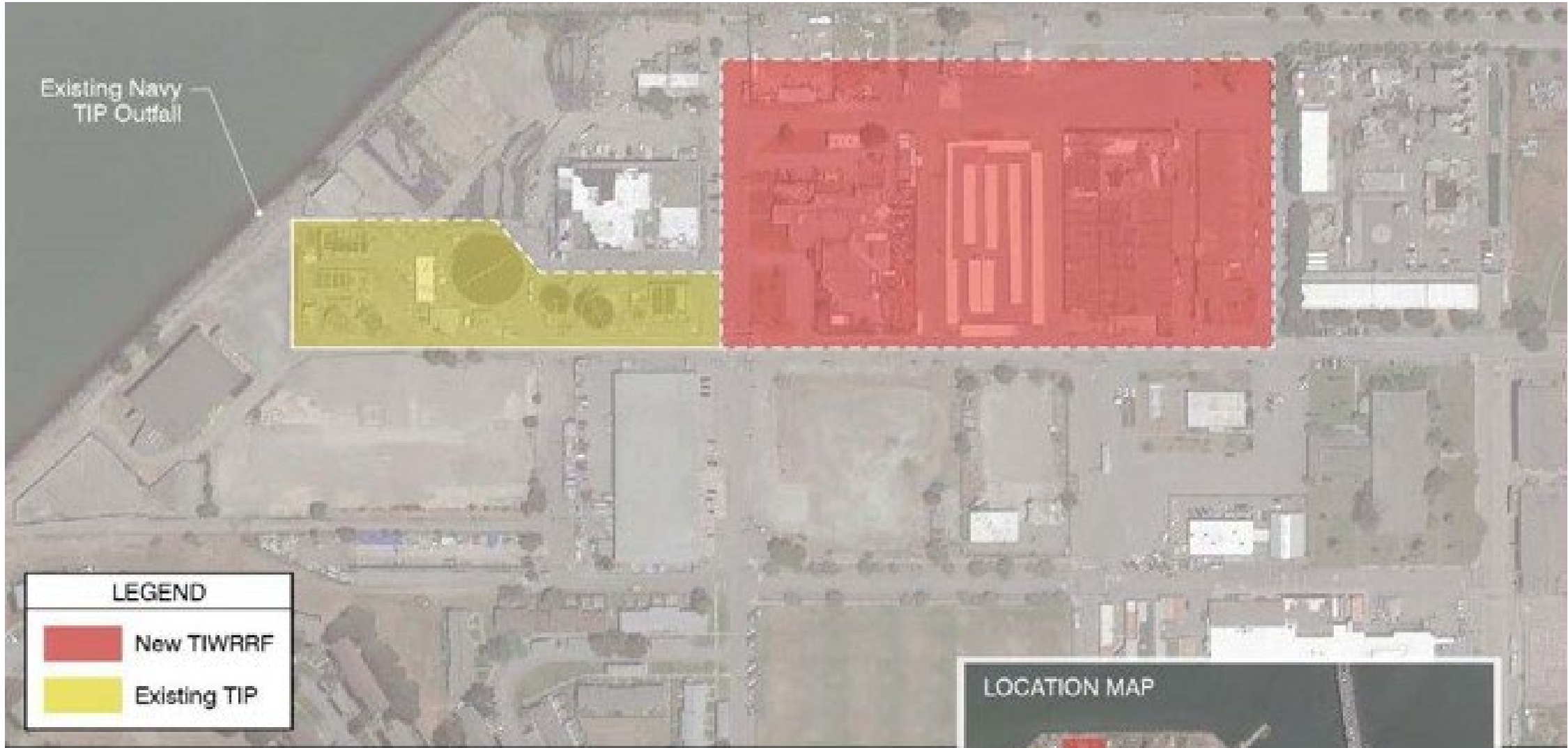


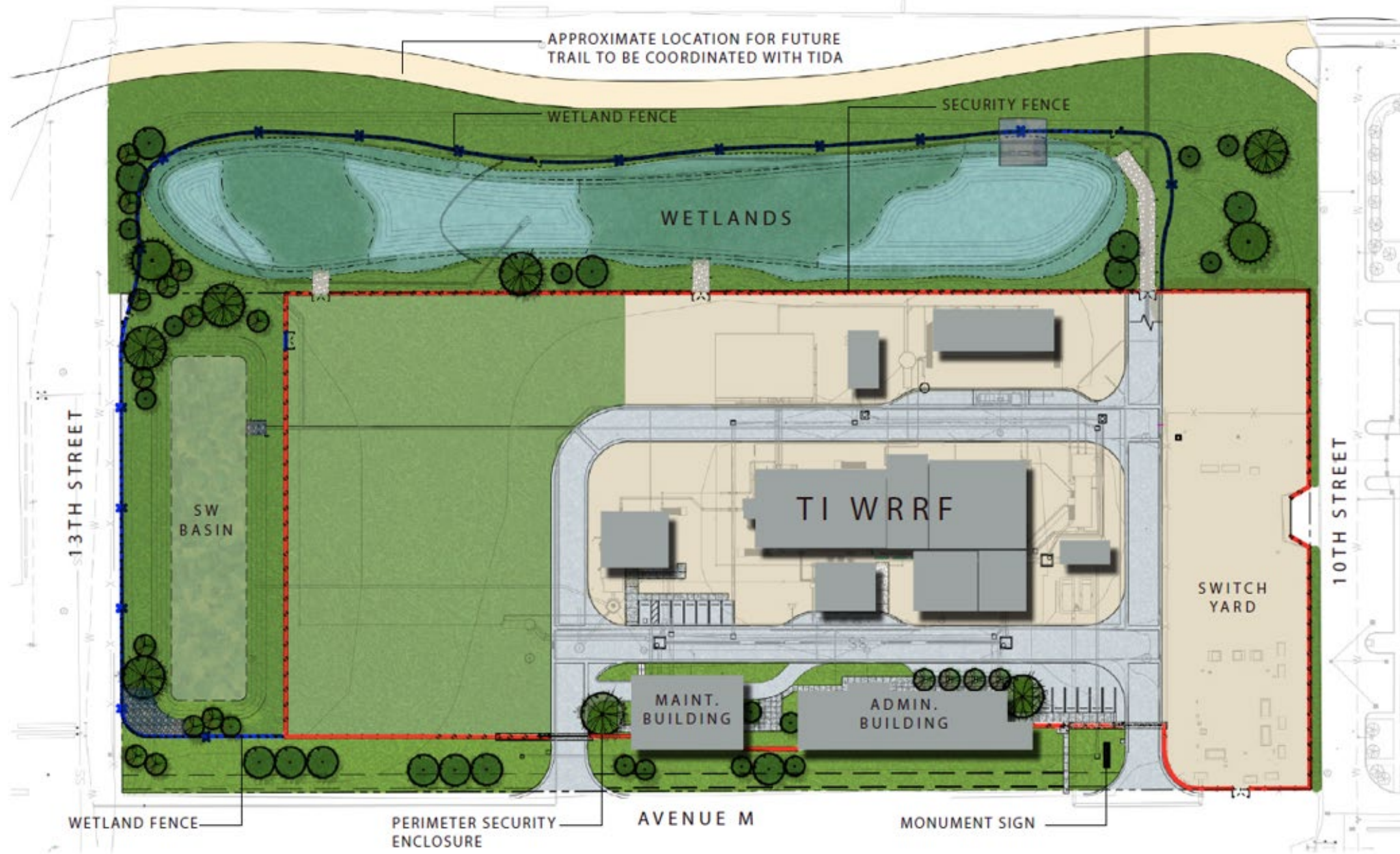


**SAN FRANCISCO PUBLIC UTILITIES COMMISSION  
TREASURE ISLAND WATER RESOURCE RECOVERY FACILITY**

Final Design | May 20, 2026



SAN FRANCISCO BAY





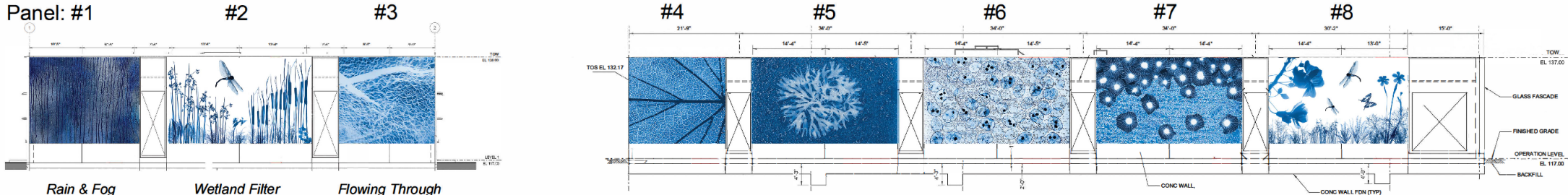


## **ART PROJECT GOALS**

Connect viewers to an understanding of the flow and importance of water and wastewater in the TIWRRF, on and around the island, and throughout the Bay Area, more broadly.

Highlight the island's history, ecology, natural and marine environments, and the environmental stewardship of the PUC.

# Cycles of Water and Light Ron M Saunders

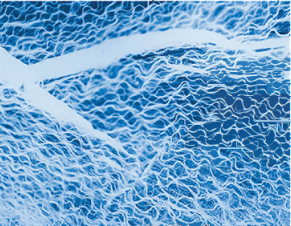
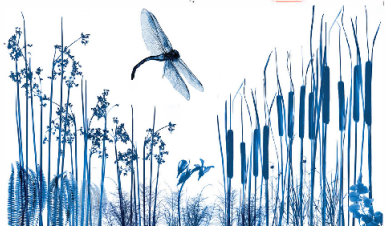


## Cycles of Water and Light

### Proposal Narrative

This proposal presents a site-specific mural composed of photogram images of natural elements, to be installed on the exterior walls of the Treasure Island Water Recovery Resource Facility. The artwork celebrates the vital role of water and ecology while visually connecting the building's function. It is designed to inspire both visitors and staff by transforming the facility into a place of education, beauty, and reflection.

This eight-panel cyanotype mural traces the transformative journey of water—beginning in the atmosphere and ending as clean gray water ready to nourish the landscape. Using natural forms and photogram techniques, each panel serves as a chapter in a visual story that honors both the science of water treatment and the beauty of nature's design. All imagery in the mural will be created using natural materials—leaves, seeds, flowers, feathers, and other organic materials—collected from the surrounding landscape and local ecosystems. These materials will be used to make photograms, a camera-less photographic technique that captures the shadows and textures of natural forms.



**Panel 1 - Rain and Fog:**  
Rain and drifting fog introduce the mural, symbolizing San Francisco's coastal climate and the water's atmospheric beginning. This panel anchors the mural in place, reminding viewers about the source of all water.

**Panel 2 - Wetland Filter:**  
This panel features photograms of native California plants, emphasizing the importance of nature in the water cycle. Plants absorb, filter, and rely on water—reminding us that natural systems work alongside infrastructure to sustain life.

**Panel 3 - Flowing Through:**  
Wavy horizontal water lines represent water moving through underground infrastructure as it travels into the treatment system. The lines create a rhythmic movement, pulling the viewer forward to connect to panel 4.

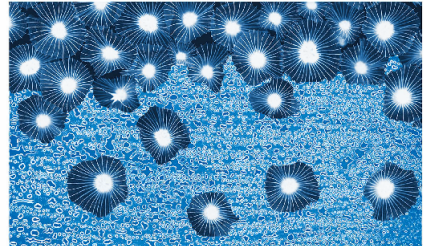
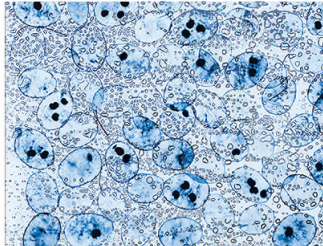
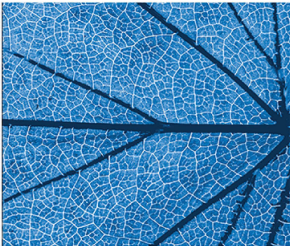
**Panel 4 - Leaf as Network:**  
A leaf detail symbolizes a natural filtration system and network. The image highlights how water moves through organic and engineered pathways alike, guided by structure.

**Panel 5 -**  
Spirling and swirling as the facility processes the water in careful stages of transformation.

**Panel 6 - Microbial Life:**  
Delicate dollar seed photograms mimic bacterial forms, immersed in misshapen, organic water shapes. Dollar seeds suggest helpful bacteria at work—cleaning and breaking down waste at a microscopic level. These unseen organisms are vital to renewal.

**Panel 7 - Light and Purification:**  
Pincushion seeds float like bursts of UV light—representing the final cleansing phase, where water is purified before it reenters the landscape.

**Panel 8 - Return to Earth:**  
A cyan blue pond, surrounded by native California plants, closes the cycle. Dragonflies and butterflies symbolize balance and renewal. The water is now clean, ready to nourish life again.

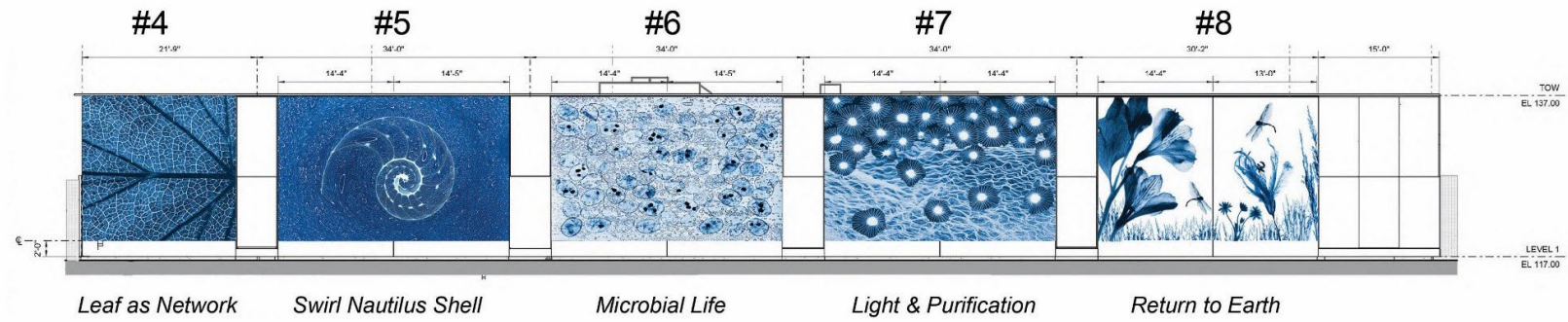
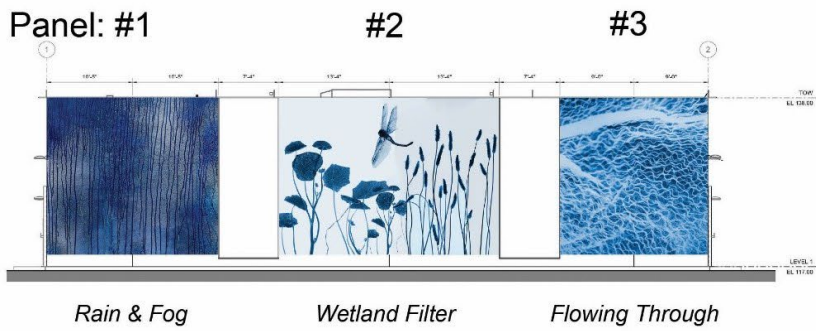


The mural will be fabricated using porcelain enamel on 12-inch square porcelain ceramic tile substrates, ensuring long-term durability and vibrant color. Rendered entirely in cyanotype blue, the artwork reinforces the theme of transformation through water. The unique visual quality of the photogram process draws the viewer in, inviting reflection and a closer connection to the often-invisible systems that sustain our environment.

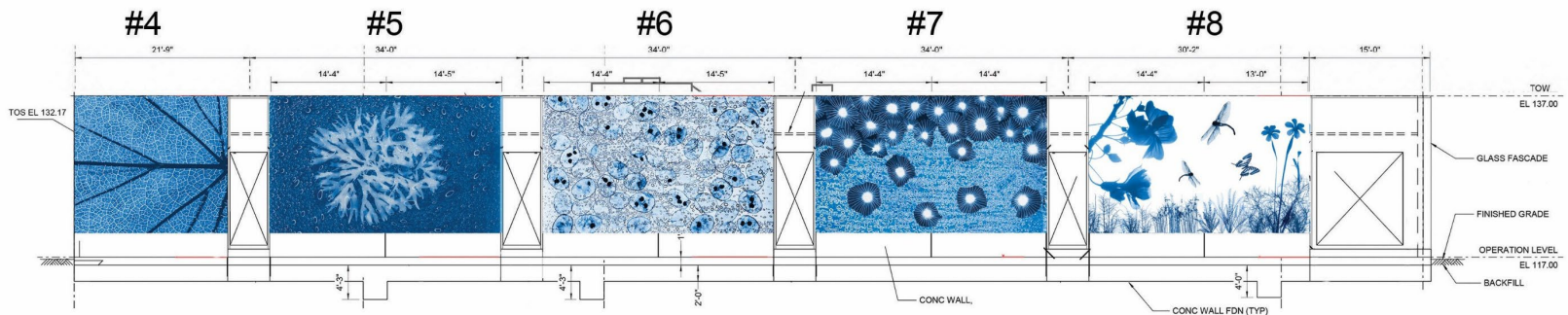
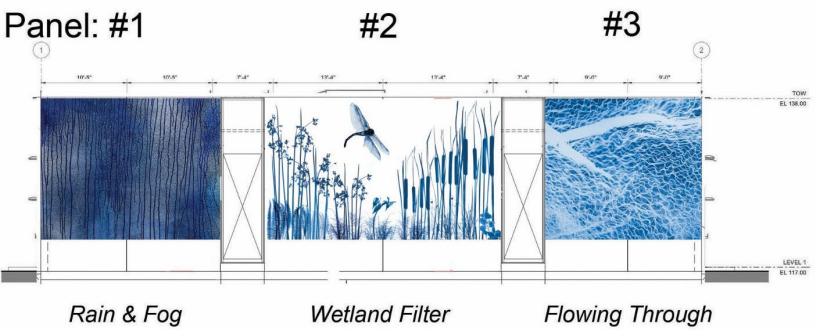


The Contractor shall verify and be responsible for all dimensions shown on this drawing.

# Proposal



# Final



**TIWRRF PUBLIC ART PROJECT NEXT STEPS** *(dates subject to change)*

|  |                          |
|--|--------------------------|
| <b>VAC Approval of Recommended Finalists</b> | May 20th                 |
| <b>Digitization of Images</b>                | Month of June            |
| <b>Tile Samples to VAC/CD Approval</b>       | July 15th                |
| <b>Fabrication NTP</b>                       | End of July              |
| <b>Fabrication (8 months)</b>                | August 2026 – March 2027 |
| <b>Transportation</b>                        | April 2027               |
| <b>Installation</b>                          | April – May 2027         |

**THANK YOU**