

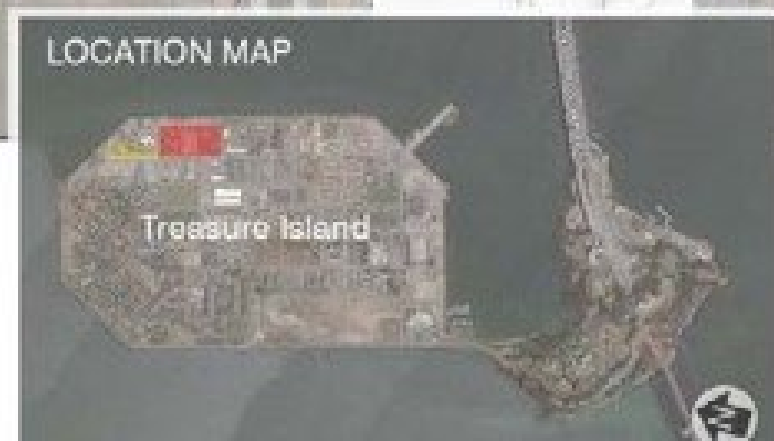
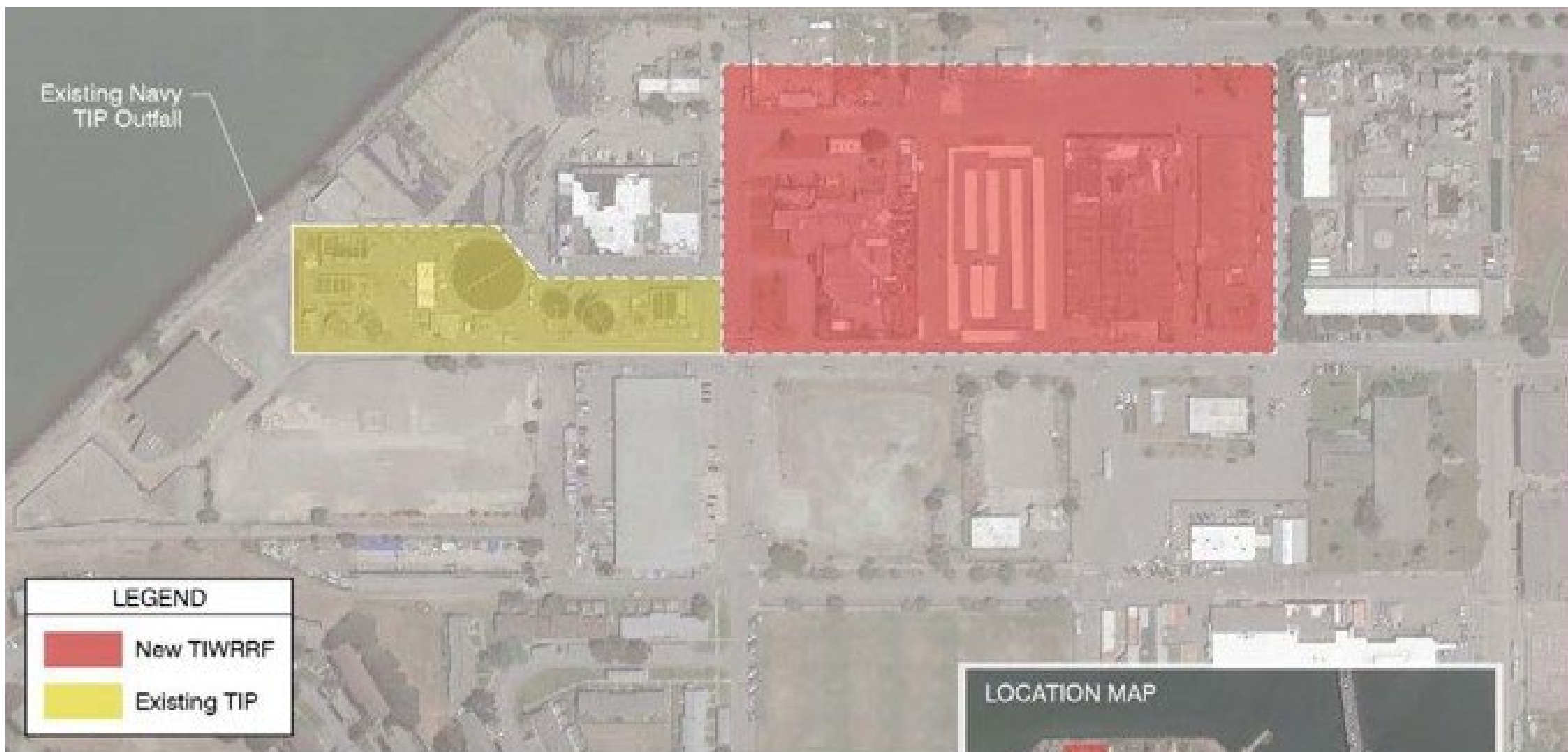


Treasure Island Water Resource Recovery Facility

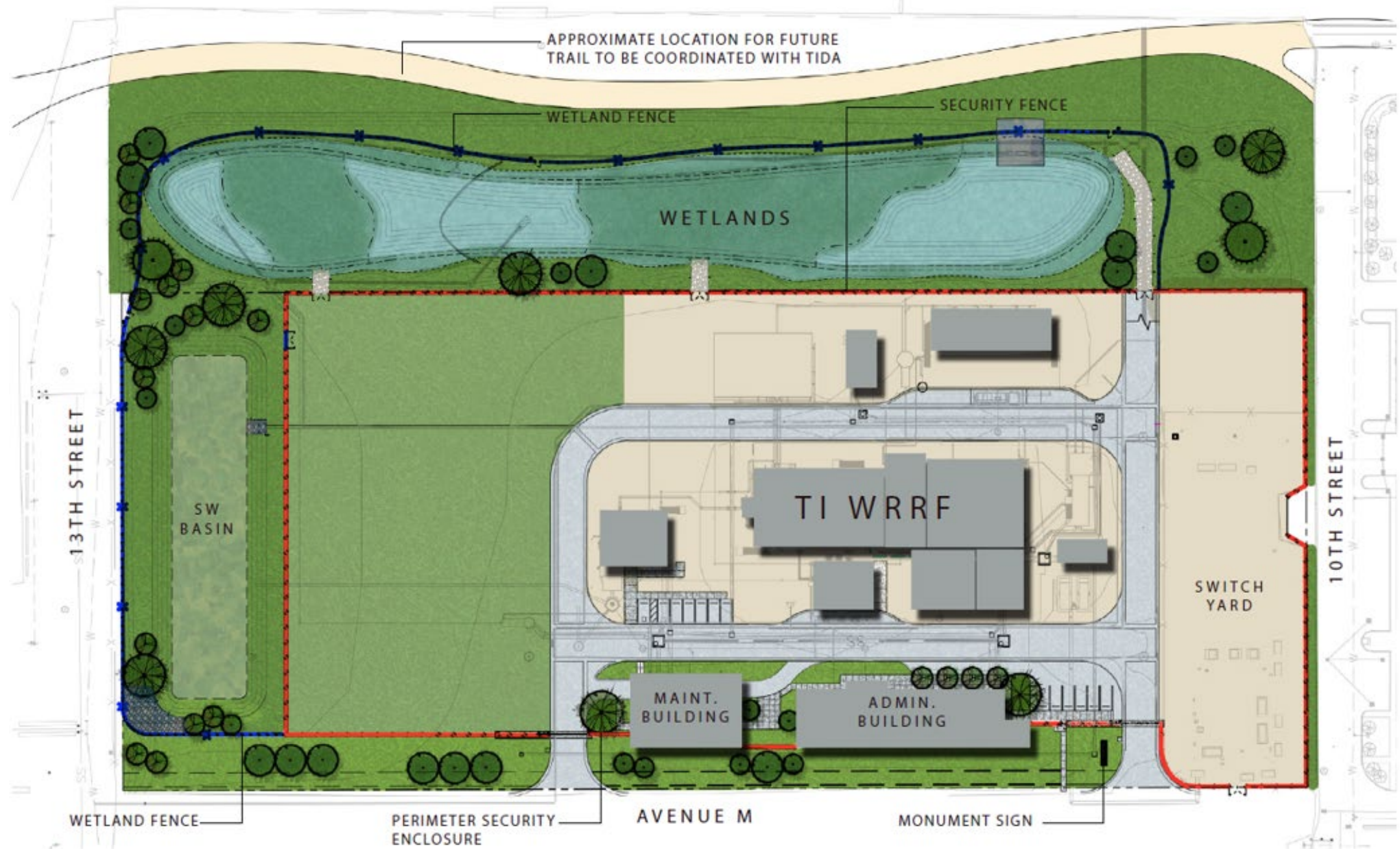
Artist Review Panel Two Recommendation

August 20, 2025





SAN FRANCISCO BAY







ART OPPORTUNITY

Interspersed between reflective, vertical glazed elements that connect the landscape to the sky. The façade-mounted artwork will consist of imagery on up to 4,016 square feet of precast concrete panels, which may be produced through the application of concrete, mosaic or ceramic tile, custom-formed reliefs, and/or other precast elements. The artwork will be installed by a separate contractor managed by the City.

BUDGET

Art	\$980,000 (70%)
Administration:	\$280,000 (20%)
Conservation	\$140,000 (10%)
ART ENRICHMENT TOTAL	\$1,400,000
Artist Selection	\$20,000
Photography + Signage	\$4,500
Field Expenses	\$500
Internal Contingency	\$98,000
Subtotal Art Expenses	\$123,000
Artist Contract	\$717,000
Installation Allocation	\$140,000

ART PROJECT GOALS

- Connect viewers to an understanding of the flow and importance of water and wastewater in the TIWRRF, on and around the island, and throughout the Bay Area, more broadly.
- Highlight the island's history, ecology, natural and marine environments, and the environmental stewardship of the PUC.

PANEL TWO PROCESS

1. Presentation of proposals by each finalist followed by questions from panelists.
2. Summary of public comment received during proposal display.
3. Panel discussion of each proposal, followed by scoring based on criteria.
4. Staff tallies scores and announces results.

SCORING CRITERIA

1. Artistic Merit (1 – 10)

- a. Originality of concept and vision
- b. Degree to which work engages the viewer emotionally, intellectually, spiritually
- c. Quality of craftsmanship or mastery of skills and techniques

2. Relevant Skills and Experience (1 – 10)

- a. Assessed ability of artist to successfully implement a proposed project, such as the ability to work constructively with other project stakeholders, meet deadlines, willingness to resolve issues as they arise, and generally manage the demands of the project.
- b. Cultural competency and/or significant connection between the artist and the project constituency, or experience that may particularly qualify an artist to meet project goals may also be considered.

3. Meets Goals of the Project and the Civic Art Collection. (1 – 10)

4. Appropriate to Site (1 – 10)

- a. Proposed artwork is appropriate for its intended display location in terms of scale, media, design or imagery and is judged to be relevant within the context of the surrounding community, and is compatible with the mission and operations of the client department

5. Feasibility and Maintainability (1 – 10)

- a. Artwork evaluated relative to its feasibility and evidence of the artist's ability to successfully complete the work as proposed. Factors to be considered include, but are not limited to: project budget, timeline, and the artist's experience.
- b. Due consideration shall be given to the structural and surface soundness, and to inherent resistance to theft, vandalism and weathering, and to the cost and amount of ongoing maintenance and/or repair anticipated.



**TREASURE ISLAND WATER RESOURCE RECOVERY FACILITY
ARTIST REVIEW PANEL TWO SUMMARY**

MEETING DATE

July 30, 2025

VOTING SELECTION PANELISTS

Barb Berastegui, Design Principal, Stantec
Demetri Broxton, Artist, Senior Director of Education, MoAD
Nella Goncalves, Community Representative
Nancy Lim, Associate Curator, Painting and Sculpture, SFMOMA
Sanaz Mazinani, Artist
Blair Randall, Arts and Education Program Manager, SFPUC
Mary Rubin, Senior Project Manager, San Jose Public Art Program

PROCESS

Three artist finalists presented their proposals for the Gene Friend Recreation Center Integrated Wall Artwork Public Art Project. The Artist Review Panel discussed the finalists' proposals and scored each artist on the following criteria (1= low score):

- Artistic Merit (1-10)
- Relevant Skills and Experience (1-10)
- Meets the Project Goals and Goals of the Civic Art Collection (1-10)
- Appropriateness to the Project Site (1-10)
- Feasibility and Maintainability (1-10)

RESULTS

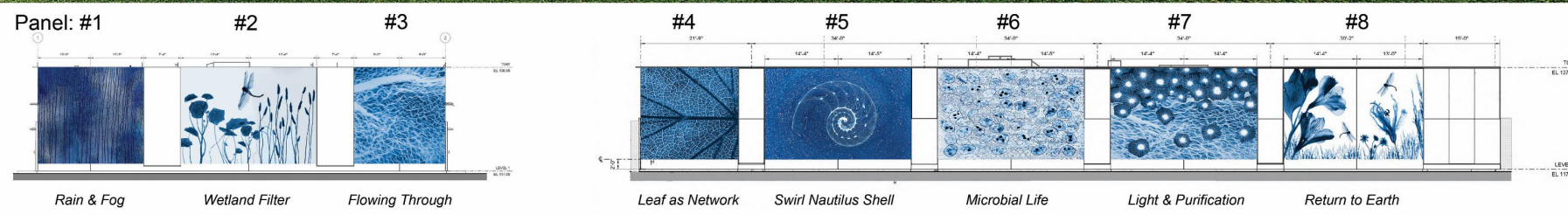
Ron Moultrie Saunders	306
David Wilson	286
Cheryl Derricotte	243
Alyson Shotz	228

ARTS COMMISSION APPROVAL

Discussion and possible action to approve the conceptual design proposal *Cycles of Water and Light* by Ron Moultrie Saunders for the Treasure Island Water Resource Recovery Facility Public Art Project, as recommended by the artist review panel.

Discussion and possible action to authorize the Director of Cultural Affairs to enter into a contract with Ron Moultrie Saunders for an amount not to exceed \$717,000 for the design, engineering, fabrication, transportation, and consultation during installation of an artwork for the Treasure Island Water Resource Recovery Facility Public Art Project.

Art Proposal for the Treasure Island Water Resource Recovery Facility *Ron M Saunders*



Cycles of Water and Light
Proposal Narrative

This proposal presents a site-specific mural composed of photogram images of natural elements, to be installed on the exterior walls of the Treasure Island Water Recovery Resource Facility. The artwork celebrates the vital role of water and ecology while visually connecting to the building's function. It is designed to inspire both visitors and staff by transforming the facility into a place of education, beauty, and reflection.

This eight-panel cyanotype mural traces the transformative journey of water—beginning in the atmosphere and ending as clean gray water ready to nourish the landscape. Using natural forms and photogram techniques, each panel serves as a chapter in a visual story that honors both the science of water treatment and the beauty of nature's design. All imagery in the mural will be created using natural materials—leaves, seeds, flowers, feathers, and other organic materials—collected from the surrounding landscape and local ecosystems. These materials will be used to make photograms, a camera-less photographic technique that captures the shadows and textures of natural forms.

Panel 1-Rain and Fog:
Rain and drifting fog introduce the mural, symbolizing San Francisco's coastal climate and the water's atmospheric beginning. This panel anchors the mural in place, reminding viewers about the source of all water.

Panel 2-Wetland Filter:
This panel features photograms of native California plants, emphasizing the importance of nature in the water cycle. Plants absorb, filter, and rely on water—reminding us that natural systems work alongside infrastructure to sustain life.

Panel 3-Flowing Through:
Wavy horizontal water lines represent water moving through underground infrastructure as it travels into the treatment system. The lines create a rhythmic movement, pulling the viewer forward to connect to panel 4.

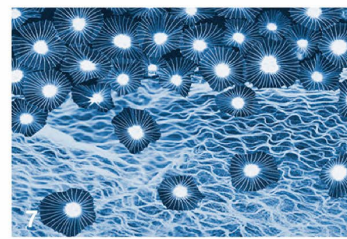
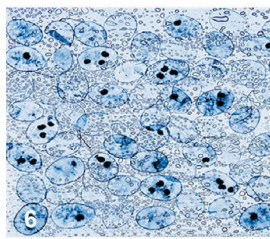
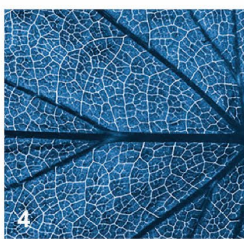
Panel 4-Leaf as Network:
A leaf detail symbolizes a natural filtration system and network. The image highlights how water moves through organic and engineered pathways alike, guided by structure.

Panel 5-Nautilus Shell:
The spiral chambers of a nautilus shell symbolize the complexity and inner workings of the treatment plant. Spiraling like the shell and swirling as the facility processes the water in careful stages of transformation.

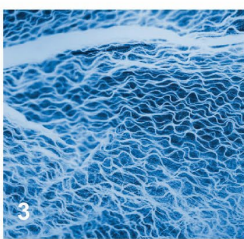
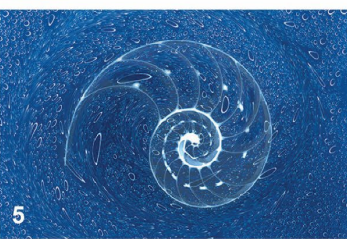
Panel 6-Microbial Life:
Delicate dollar seed photograms mimic bacterial forms, immersed in misshapen, organic water shapes. Dollar seeds suggest helpful bacteria at work—cleaning and breaking down waste at a microscopic level. These unseen organisms are vital to renewal.

Panel 7-Light and Purification:
Pin cushion seeds float like bursts of UV light—representing the final cleansing phase, where water is purified before it reenters the landscape.

Panel 8-Return to Earth:
A cyan blue pond, surrounded by native California plants, closes the cycle. Dragonflies and butterflies symbolize balance and renewal. The water is now clean, ready to nourish life again.



The mural will be fabricated using porcelain enamel on 12-inch square porcelain ceramic tile substrates, ensuring long-term durability and vibrant color. Rendered entirely in cyanotype blue, the artwork reinforces the theme of transformation through water. The unique visual quality of the photogram process draws the viewer in, inviting reflection and a closer connection to the often-invisible systems that sustain our environment.



TREASURE ISLAND WATER RESOURCE RECOVERY FACILITY TIMELINE

(subject to change)

Final Artist Review Panel

July 30, 2025

Panel Recommendation to Visual Arts Committee

August 20, 2025

Arts Commission Approval

September 8, 2025

Artist Under Contract

September 2025

Design Development

October-December 2025

Construction Documents

January-March 2026

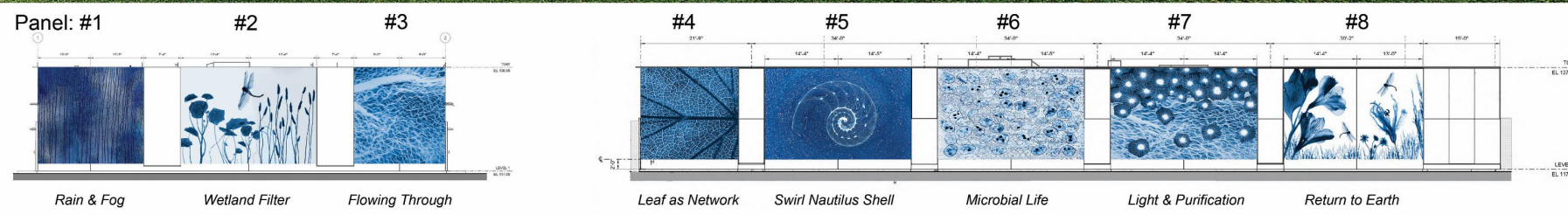
Fabrication

April-September 2026 (6 months)

Installation

Fall 2026

Art Proposal for the Treasure Island Water Resource Recovery Facility Ron M Saunders



Cycles of Water and Light
Proposal Narrative

This proposal presents a site-specific mural composed of photogram images of natural elements, to be installed on the exterior walls of the Treasure Island Water Recovery Resource Facility. The artwork celebrates the vital role of water and ecology while visually connecting to the building's function. It is designed to inspire both visitors and staff by transforming the facility into a place of education, beauty, and reflection.

This eight-panel cyanotype mural traces the transformative journey of water—beginning in the atmosphere and ending as clean gray water ready to nourish the landscape. Using natural forms and photogram techniques, each panel serves as a chapter in a visual story that honors both the science of water treatment and the beauty of nature's design. All imagery in the mural will be created using natural materials—leaves, seeds, flowers, feathers, and other organic materials—collected from the surrounding landscape and local ecosystems. These materials will be used to make photograms, a camera-less photographic technique that captures the shadows and textures of natural forms.

Panel 1-Rain and Fog:
Rain and drifting fog introduce the mural, symbolizing San Francisco's coastal climate and the water's atmospheric beginning. This panel anchors the mural in place, reminding viewers about the source of all water.

Panel 2-Wetland Filter:
This panel features photograms of native California plants, emphasizing the importance of nature in the water cycle. Plants absorb, filter, and rely on water—reminding us that natural systems work alongside infrastructure to sustain life.

Panel 3-Flowing Through:
Wavy horizontal water lines represent water moving through underground infrastructure as it travels into the treatment system. The lines create a rhythmic movement, pulling the viewer forward to connect to panel 4.

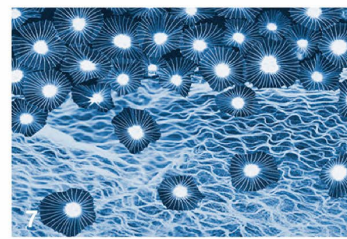
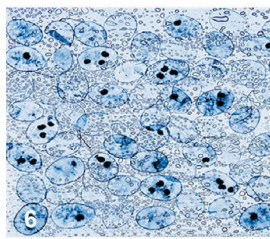
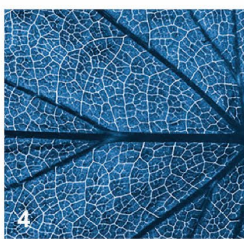
Panel 4-Leaf as Network:
A leaf detail symbolizes a natural filtration system and network. The image highlights how water moves through organic and engineered pathways alike, guided by structure.

Panel 5-Nautilus Shell:
The spiral chambers of a nautilus shell symbolize the complexity and inner workings of the treatment plant. Spiraling like the shell and swirling as the facility processes the water in careful stages of transformation.

Panel 6-Microbial Life:
Delicate dollar seed photograms mimic bacterial forms, immersed in misshapen, organic water shapes. Dollar seeds suggest helpful bacteria at work—cleaning and breaking down waste at a microscopic level. These unseen organisms are vital to renewal.

Panel 7-Light and Purification:
Pin cushion seeds float like bursts of UV light—representing the final cleansing phase, where water is purified before it reenters the landscape.

Panel 8-Return to Earth:
A cyan blue pond, surrounded by native California plants, closes the cycle. Dragonflies and butterflies symbolize balance and renewal. The water is now clean, ready to nourish life again.



The mural will be fabricated using porcelain enamel on 12-inch square porcelain ceramic tile substrates, ensuring long-term durability and vibrant color. Rendered entirely in cyanotype blue, the artwork reinforces the theme of transformation through water. The unique visual quality of the photogram process draws the viewer in, inviting reflection and a closer connection to the often-invisible systems that sustain our environment.

