

San Francisco Pretrial Diversion Project

JUSTICE - INVOLVED ACCESS POINT

1200 Folsom St.
San Francisco, CA, 94103
accesspoint@sfpredtrial.org
415-522-7592

AGENDA

- Our Mission & Vision
- Agency overview
- The Team
- Population of Service
- Core Functions

OUR MISSION & VALUE

As a community-based organization, our mission is to support system-impacted people to effectively navigate court processes, avoid future arrest and remain free of system involvement. We do this by providing culturally relevant services.

We are committed to community-led transformation of the criminal justice system so that it is fair and just, transformation of our communities so they are safe and thriving, and transformation of the lives of the people we serve so they are healthy, independent, and free.



AGENCY OVERVIEW



Diversion Programs

- Pretrial Diversion (PTD)
- Neighborhood Courts
- Project 20



Release Program

- Own Recognizance
- Assertive Case Management
- In-custody Referral



In-custody Services

- Discharge Planning
- Medi-cal Enrollment

Additional Services

- Justice- Involved Access Point
- Enhanced Care Management



MEET THE TEAM



Director Of Housing
Hermela Alem



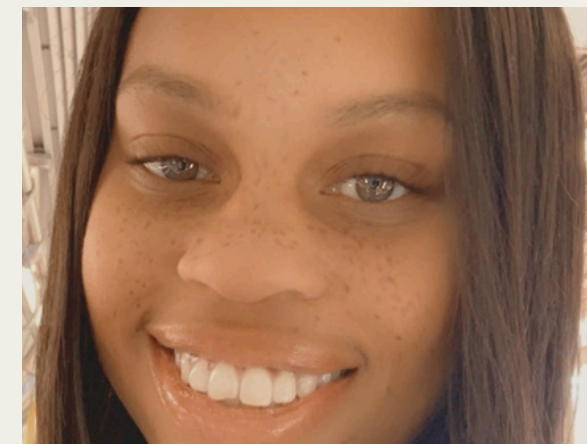
Program Manager
Elston Mallory



Housing Case Manager
Teresa Perryman



Housing Case Manager
Francica Jimenez



Housing Case Manager
Natoya Lucas

POPULATION OF SERVICE

- 18 and older who meet San Francisco's definition of homelessness and are/were Justice involved



Our Core Functions:

- SF Pretrial is the City & County's sole justice-involved Coordinated Entry Access Point.
- Primary role is to conduct assessments to determine clients need.
 - Problem solving & pathway to permanent housing
- The most intensive housing interventions are provided to those people in highest need.

Client Pathway



Alex , Client

- 66-year-old client referred in 2023
- Went from homelessness and instability to stable housing and compliance in 8 months

- **Coordinated Entry Assessment**
- **Emergency Hotel Placement**
- **Housing Navigation to PSH**
- **Connected to Enhanced Care Management**

Core Functions:

- Problem Solving
 - Problem solving conversation
 - Housing Location assistance
 - Relocation support outside San Francisco
 - Reunification, mediation, conflict resolution
 - Financial Assistance
 - Referrals to other community resources
- Coordinated Entry
 - CE assessment
 - Navigation to PSH and additional housing

POPULATION OF SERVICE

38%



of SF Pretrial
Client's are
Unhoused

Client Story

I started to realize how unmanageable and insane my life was... San Francisco Pretrial has been essential for consistency [and has] helped me get supportive housing. I've gone back to work, and I've got a job in a place that has a work environment that I'm really excited about."

Victor, Client



HOURS AND SERVICES

Address: 1200 Folsom St.
San Francisco CA 94103

Monday - Friday 8:30- 4:00pm

Phone Number: 415-522-7592

Email: accesspoint@sfprentrial.org

Website: <https://sfprentrial.org/>

CASC- Community Assessment Service Center
564 6th St.

Pact Meeting - San Francisco Parole

San Francisco County Jail

Thank you!

1200 Folsom St.
San Francisco, CA, 94103
accesspoint@sfpretial.org
415-522-7592