

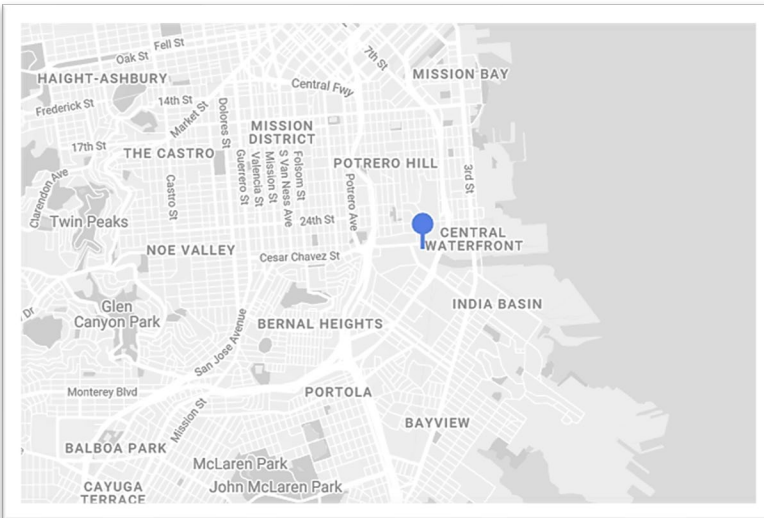
# **WALTER KITUNDU**

## *THOSE WHO CARRY WATER*

**Final Artwork Design**  
**SFPUC Water Division Campus at 2000 Marin**  
**Visual Arts Committee | March 18, 2026**

## SFPUC Water Division Campus at 2000 Marin Capital Project Overview

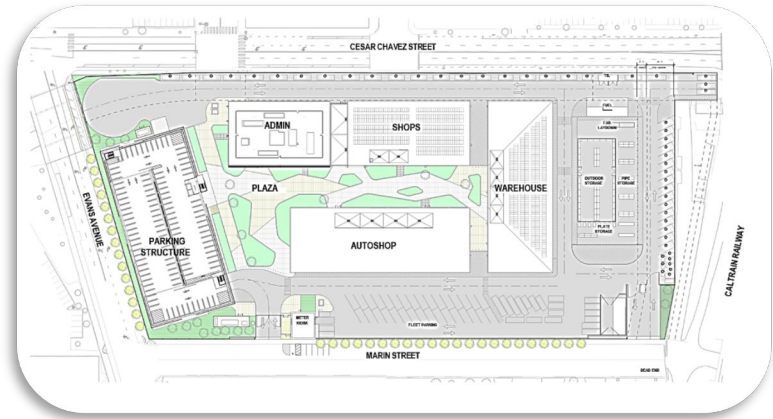
- ◆ New headquarters campus replacing the Newcomb Avenue facility
- ◆ Supports operation and maintenance of San Francisco's water distribution system
- ◆ **Campus Program**
  - Administrative offices
  - Industrial shops and warehouses
  - Six-story parking structure

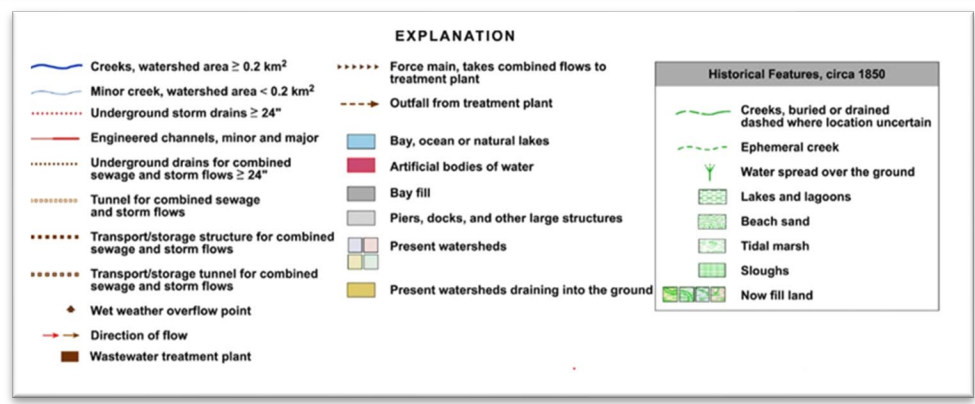
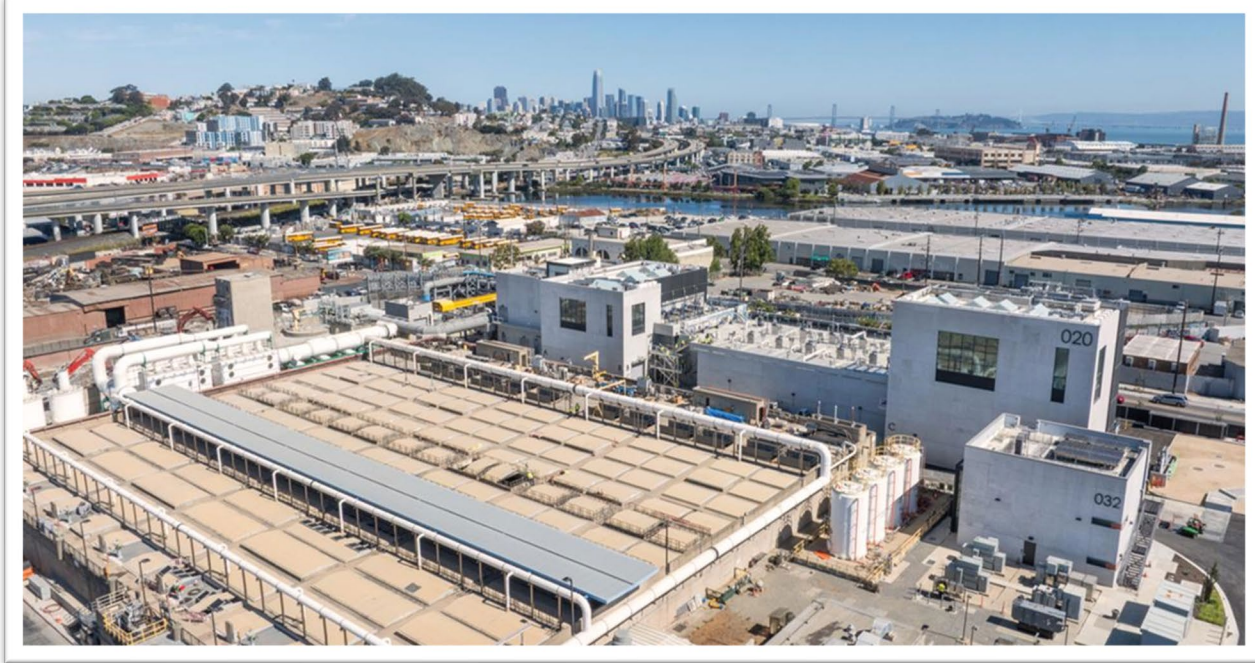
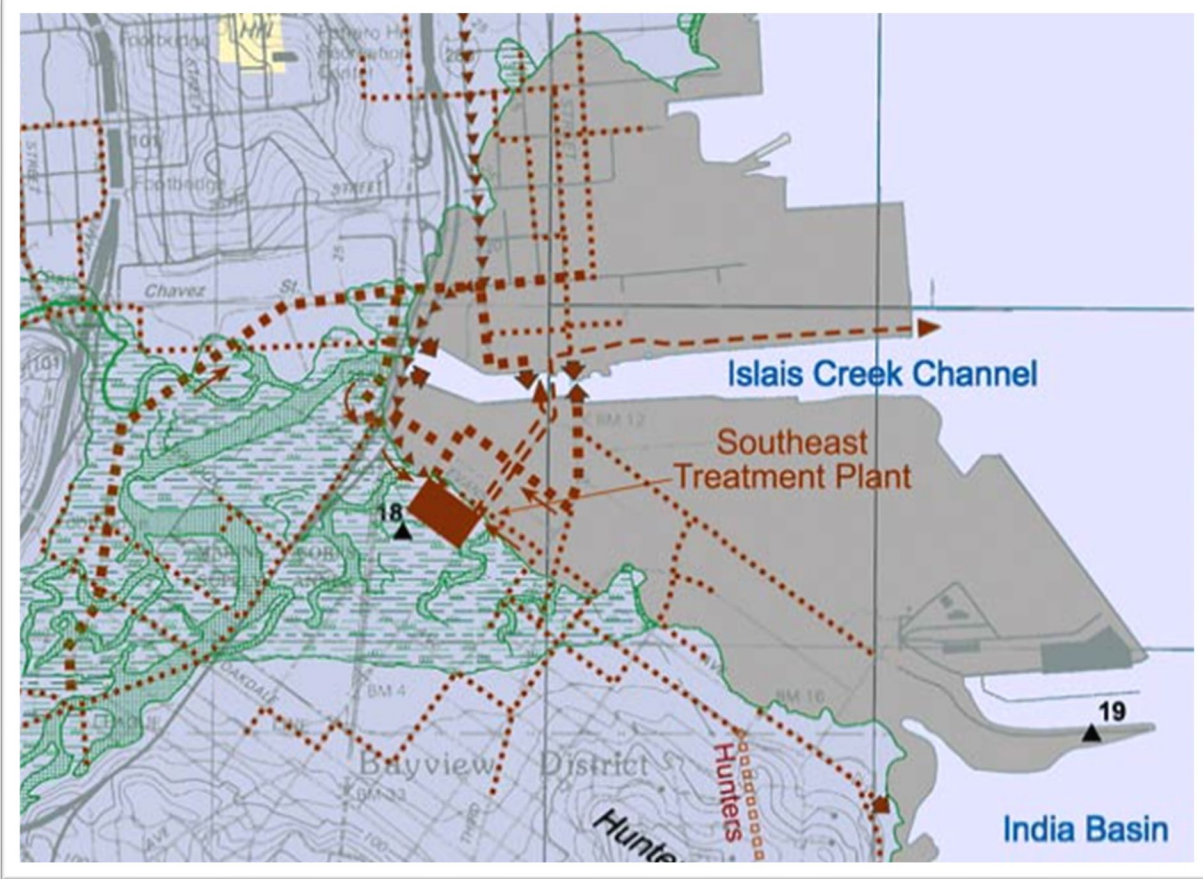


San Francisco  
**Water Power Sewer**

Services of the San Francisco Public Utilities Commission







### Site + Community Context

- ◆ Located in Bayview near the Islais Creek watershed
- ◆ Area where infrastructure, environment, and community life are closely interconnected
- ◆ Critical part of San Francisco's water, energy, and industrial infrastructure
- ◆ Ancestral homeland of the Ramaytush Ohlone; current home to a vibrant residential community with deep cultural roots

## Site + Community Context

- ◆ Bayview–Hunters Point has historically borne disproportionate industrial and environmental impacts
- ◆ Long history of environmental and social justice advocacy
- ◆ Artwork intended to respond to both building and neighborhood context
- ◆ Project goals include:
  - water infrastructure
  - environmental stewardship
  - labor of Water Division staff
  - surrounding community



Kenyatta A.C. Hinkle, *Navigating The Historical Present: Bayview-Hunters Point, 2022*



The "Big Five of Bayview": Elouise Westbrook, Ruth Williams, Bertha Freeman, Osceola Washington, and Julia Commer



Southeast Community Center at 1550 Evans



### Project Goals

- ◆ Monumental, site-specific work inspired by water
- ◆ Reflective of SFPUC mission
- ◆ Responsive to environmental and community context

### Project Budget

- ◆ Art Enrichment allocation: **\$3.4M**
- ◆ Artwork budget: **\$1.86M**
- ◆ Architectural credit of \$121/sq ft

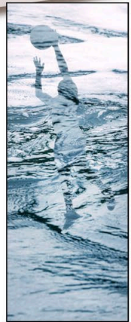
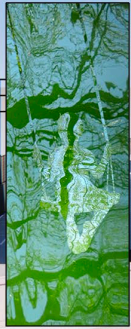
### Artwork Opportunity

- ◆ Highly visible along Evans Avenue
- ◆ Artwork integrated across north and west facades

# THOSE WHO CARRY WATER

An art proposal by Walter Kitundu  
for the San Francisco Water Department  
at 2000 Marin Street

"The water we drink, like the air we breathe,  
is not a part of our body, but is our body.  
What we do to one - to the body,  
to the water - we do to the other."  
~ Natalie Diaz



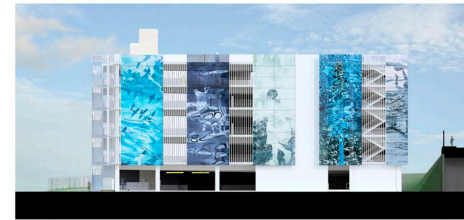
**Those Who Carry Water** is a site specific portrait of the water system, the people who sustain it, and the community through which the water flows. The images will be made of architectural float glass panels with brilliant enamel colors. Every image will be made from photographs of water taken at locations in the system managed or made possible by the SFPUC. From Hetch Hetchy to powerhouses, from public pools to treatment plants, Kitundu will photograph those who care for water systems, as well as the people of Bayview, whose silhouettes will appear in the glass.

The artist will be in conversation with Bayview residents and SFPUC employees to learn about their relationships with water and the water system. He will be joined in this story gathering work by long-time collaborator and member of the Bayview community, choreographer **Joanna Haigood**. They will develop an aerial dance performance for the opening of the new building to spectacularly bring the water stories of Bayview residents to life.

The idea of carrying water is an expansive way to think about our relationships with it. We carry it everyday in our cells and bones. So do the fish, birds, elk, and mountain lions of California. The SFPUC has shaped the land to carry water in the form of reservoirs. That water is sent through pipes to generate power and sustain a population that wouldn't be possible without the systems that carry water. This artwork is a monument to the truth that we are water and water is us. We have a responsibility to care for what we carry, to honor the central role it plays in our lives, without taking our easy access to it for granted. This artwork explores, honors, and shines a light on the many ways we carry water.

Selected lines from the stories we receive will adorn the images inside the garage, creating an interior poem weaving together ideas from multiple communities.

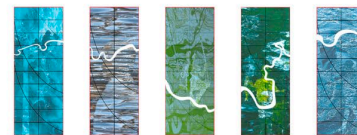
< sample images merging water with people and other beings



NORTH ELEVATION



WEST ELEVATION



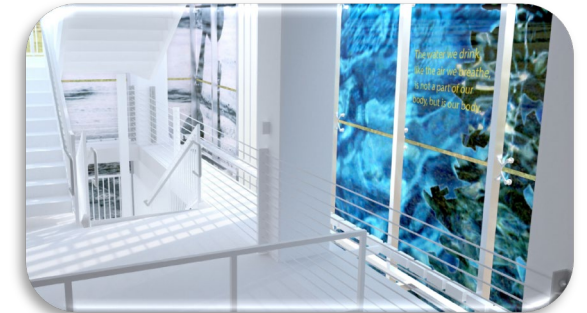
The path of the Tuolumne River runs through the artwork. A thread that connects images from all aspects of the system

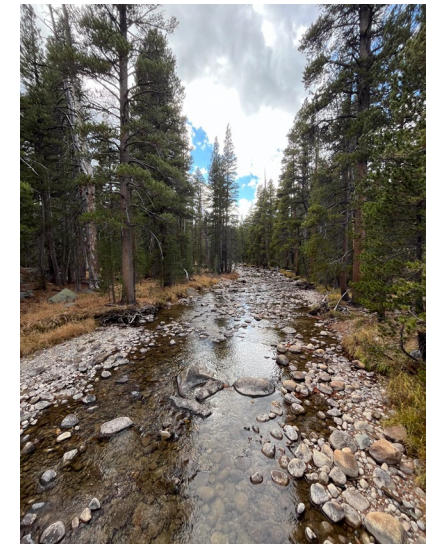


The artwork will be mounted with a secure and low profile pointed supported system.

## Walter Kitundu | *Those Who Carry Water*

- Selected through Arts Commission artist selection process
- Practice centers on site-specific public art responding to landscape, history, and community
- Previous SFPUC/SFAC project: *Ruupaywa: Songs of the Watershed* (Alameda Creek Watershed Center, Sunol)
- Proposal envisioned large-scale glass artwork connecting water sources, workers, and communities





### Research + Community Engagement

- ◆ Extensive fieldwork, photography, and relationship-building
- ◆ Visits to SFPUC watershed sites
- ◆ Conversations with Water Division staff
- ◆ Community engagement in Bayview–Hunters Point
- ◆ Collaboration with Joanna Haigood
- ◆ Artwork intended to grow out of the systems and communities it represents



#### Design + Construction Team

- Mark Cavagnero Associates (Project Architect)
- Watry Design (Parking Structure Design)
- Clark Construction (General Contractor)
- Harmon (Aluminum Fin System)

#### Artwork Engineering

- Tipping Structural Engineers (Support Structure)
- Danziger Engineering (Glass)

**Key Coordination:** Artwork glass and aluminum fins function together as one integrated façade system

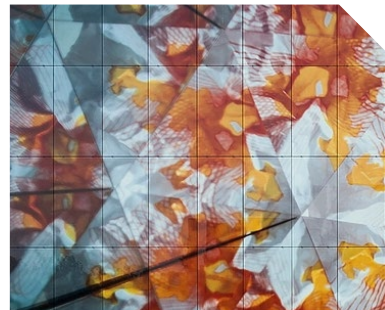
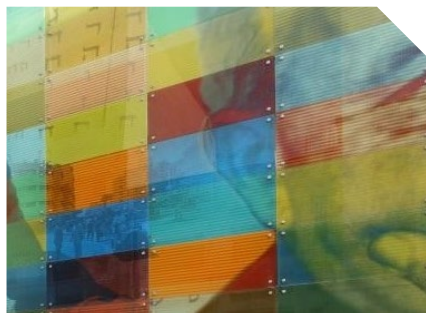
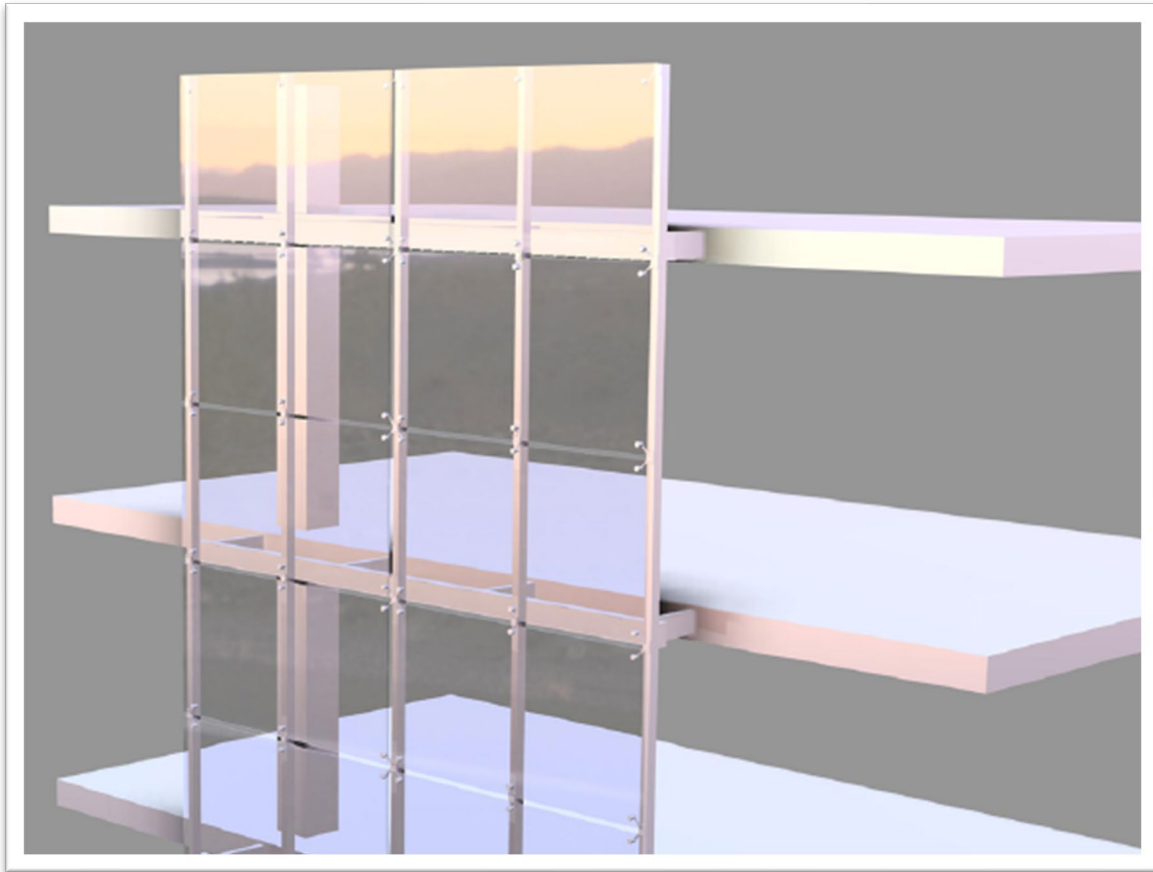


Architects • Engineers • Parking Planners



**WATRY DESIGN, INC.**

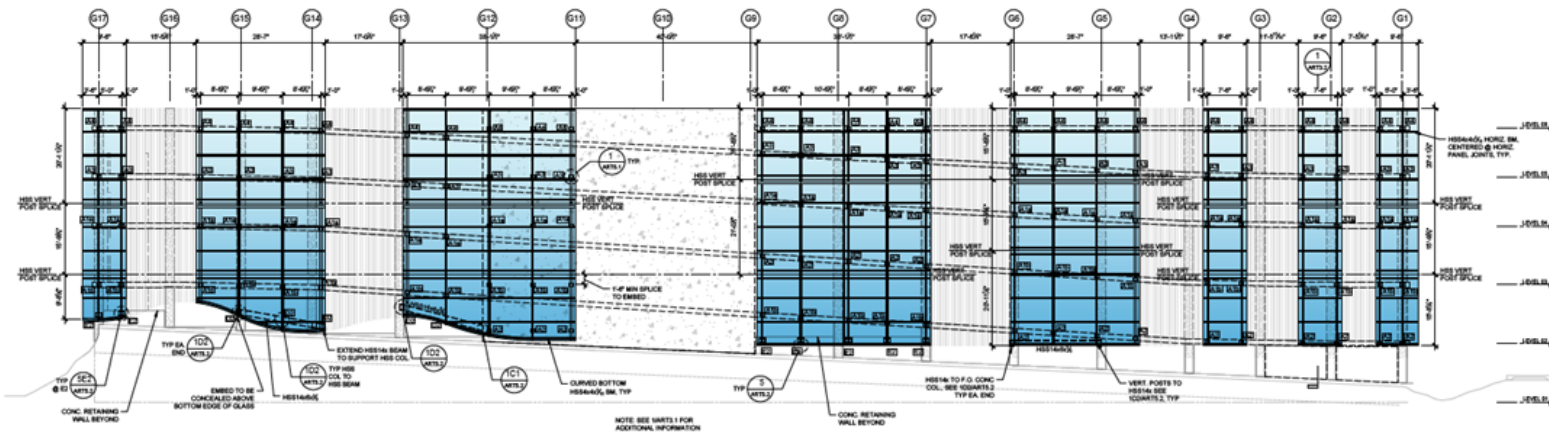
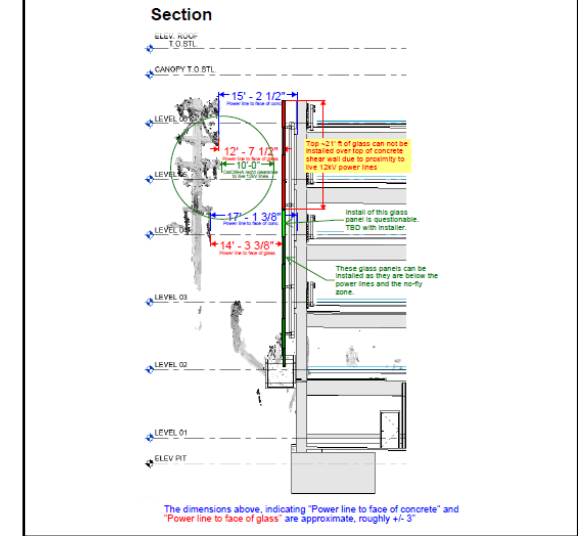




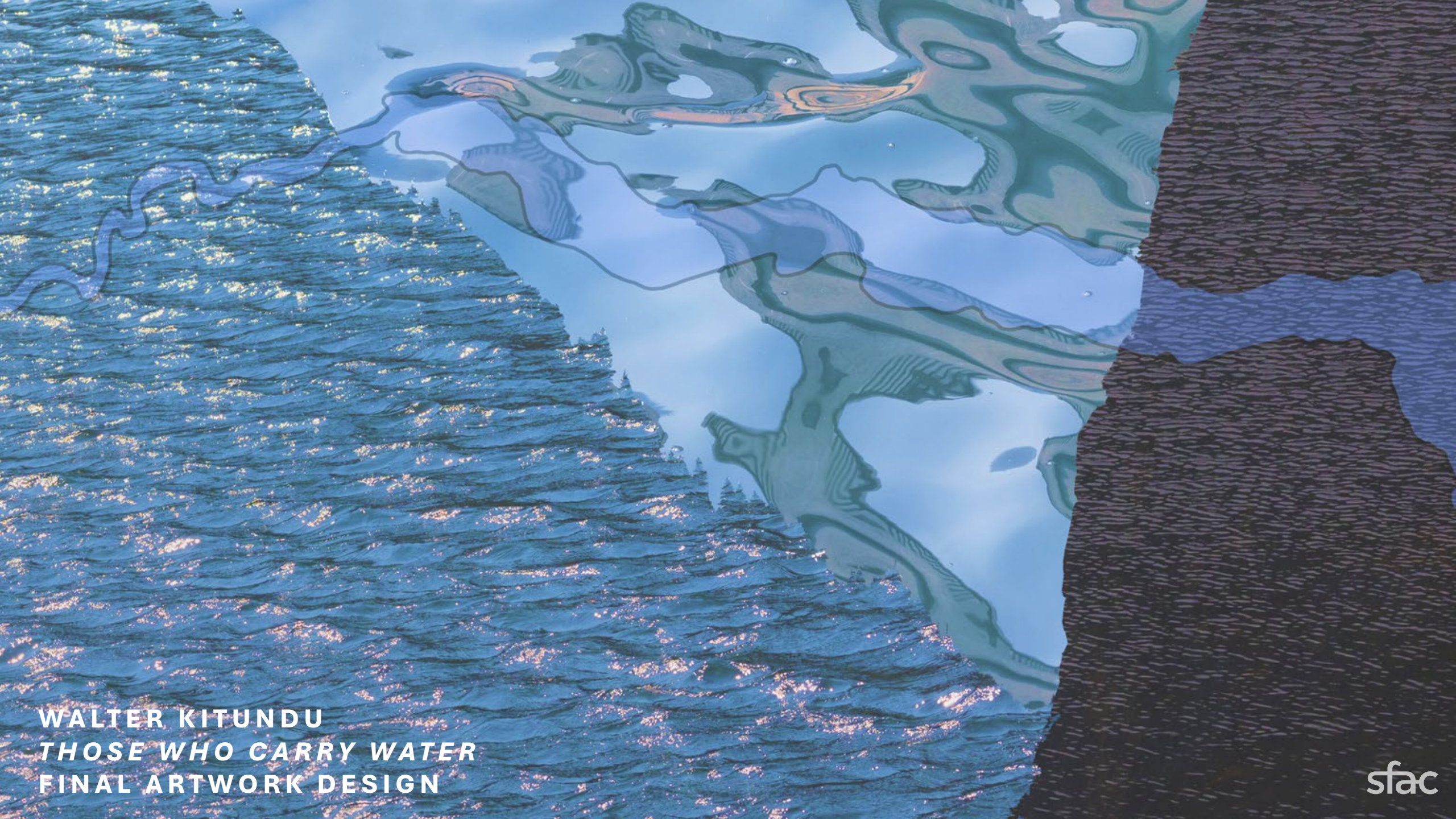
- ◆ Laminated architectural glass panels
- ◆ Point-supported glazing system mounted to structural steel armature
- ◆ Artwork imagery ceramic printed within the glass laminate
- ◆ Durable system designed for exterior architectural conditions
- ◆ Final parameters such as translucency and image density will be refined with the selected glass fabricator through testing and material samples.



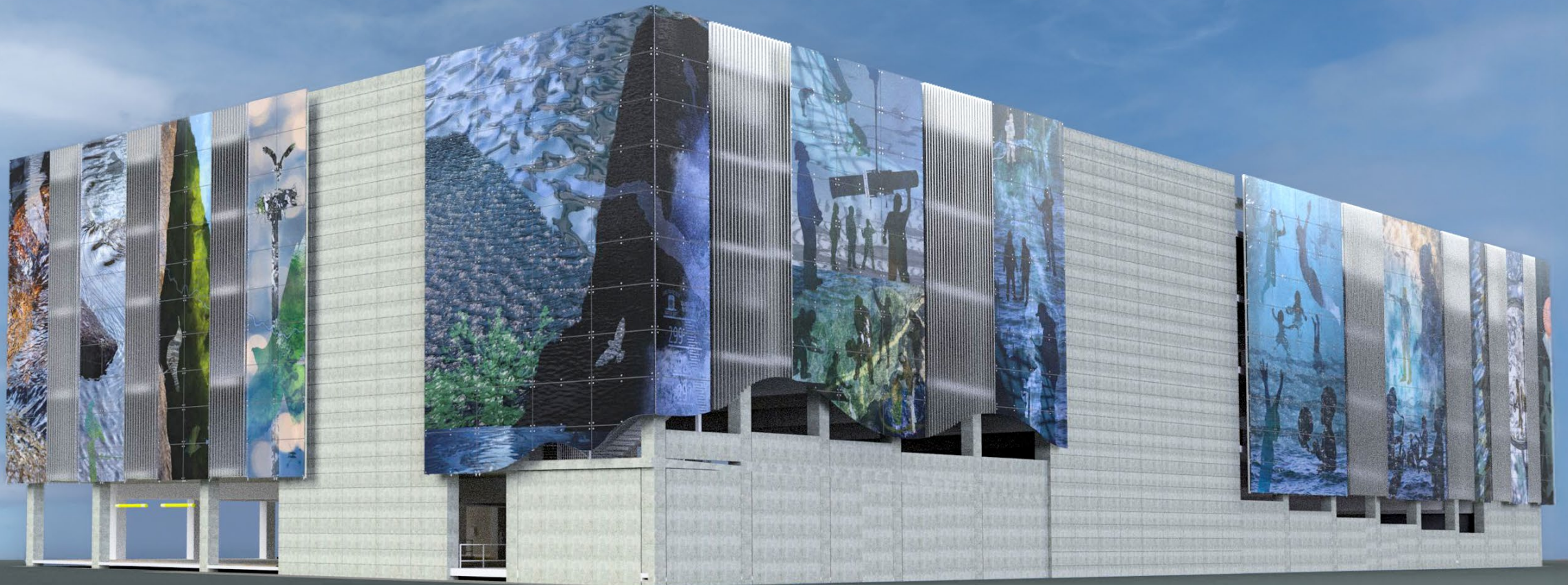
Section at Parking Garage Concrete Shear Wall between G11 & G12 indicating glass panels not possible to install due to live 12kV lines on Evans Ave.



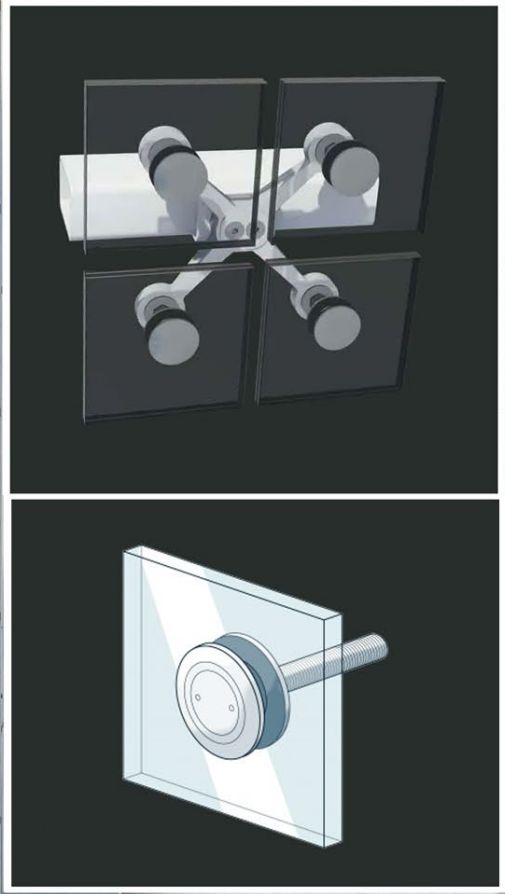
- ◆ Executive Committee approval — April 2024
- ◆ Artwork integrated with aluminum fin façade system
- ◆ Design refinements: panel layout, shear wall exposure, south façade extension, bioretention planter coordination
- ◆ Artwork expanded from ~12,500 SF to ~16,000 SF across north, west, and south façades
- ◆ PG&E transmission line clearance resolved; coordinated construction documents returning April 2026



**WALTER KITUNDU**  
***THOSE WHO CARRY WATER***  
**FINAL ARTWORK DESIGN**





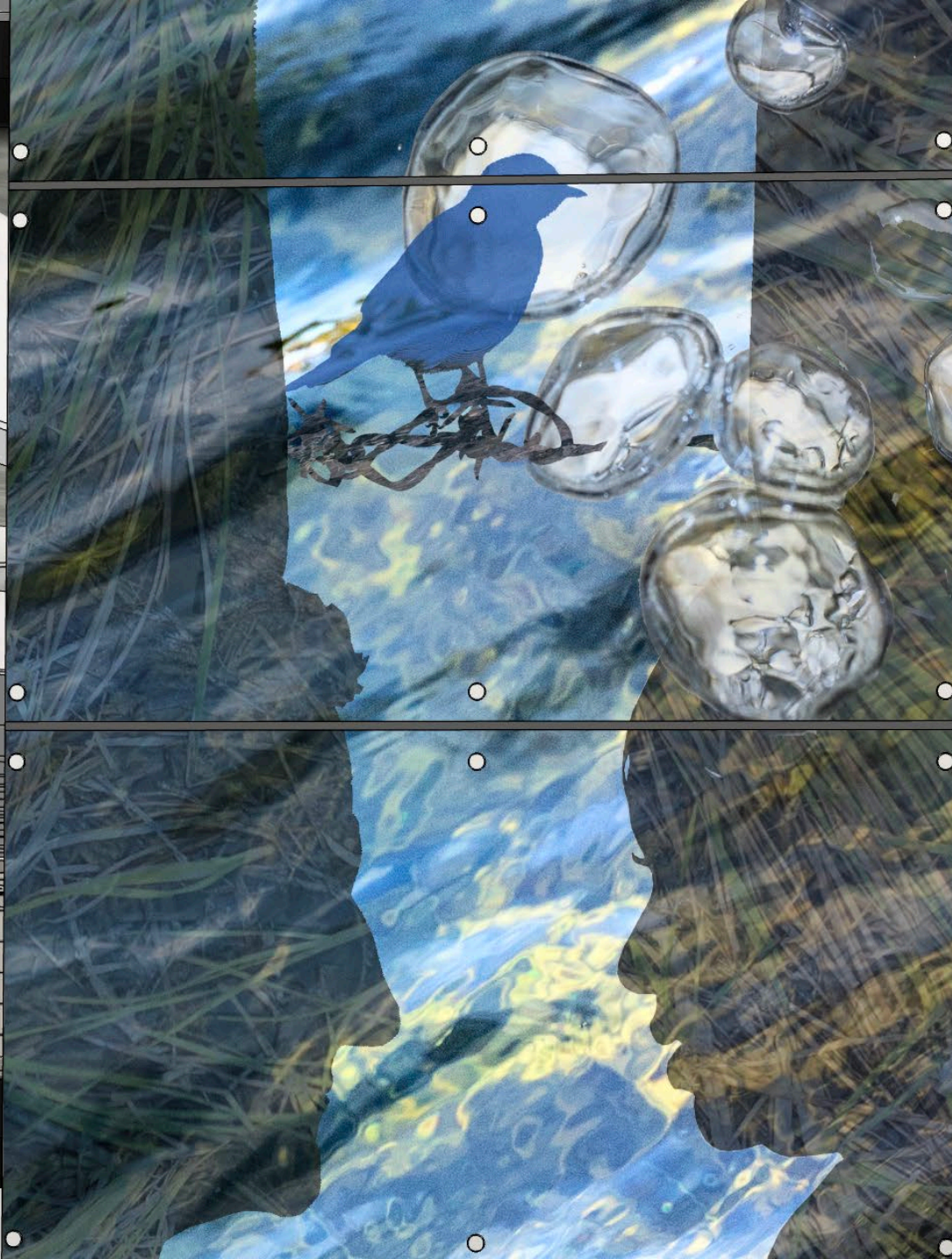


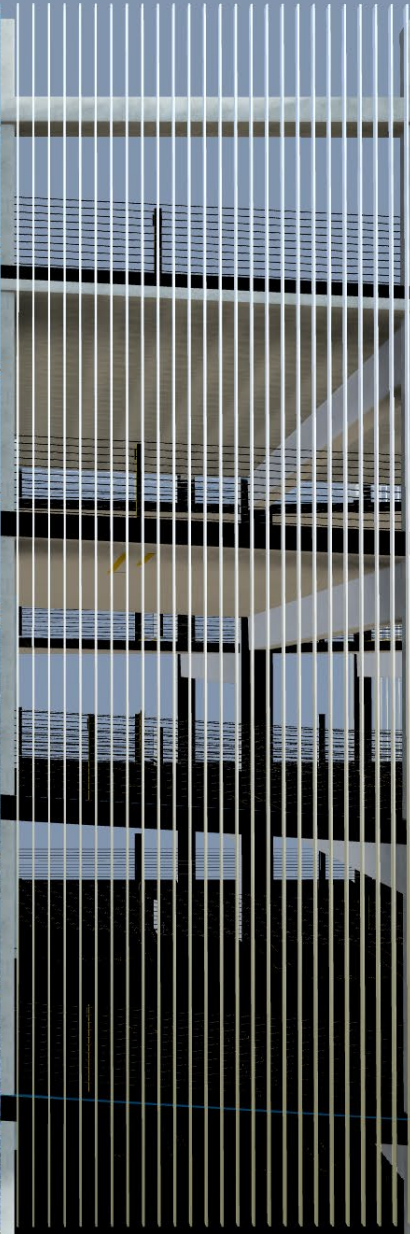


SAN FRANCISCO  
CALIFORNIA  
WATER DEPT  
299  
1907

This vertical panel features a blue water splash graphic on the left side. It contains the text "SAN FRANCISCO CALIFORNIA WATER DEPT" at the top, followed by the number "299" and "1907" at the bottom. The panel is part of a larger architectural facade with vertical slats.



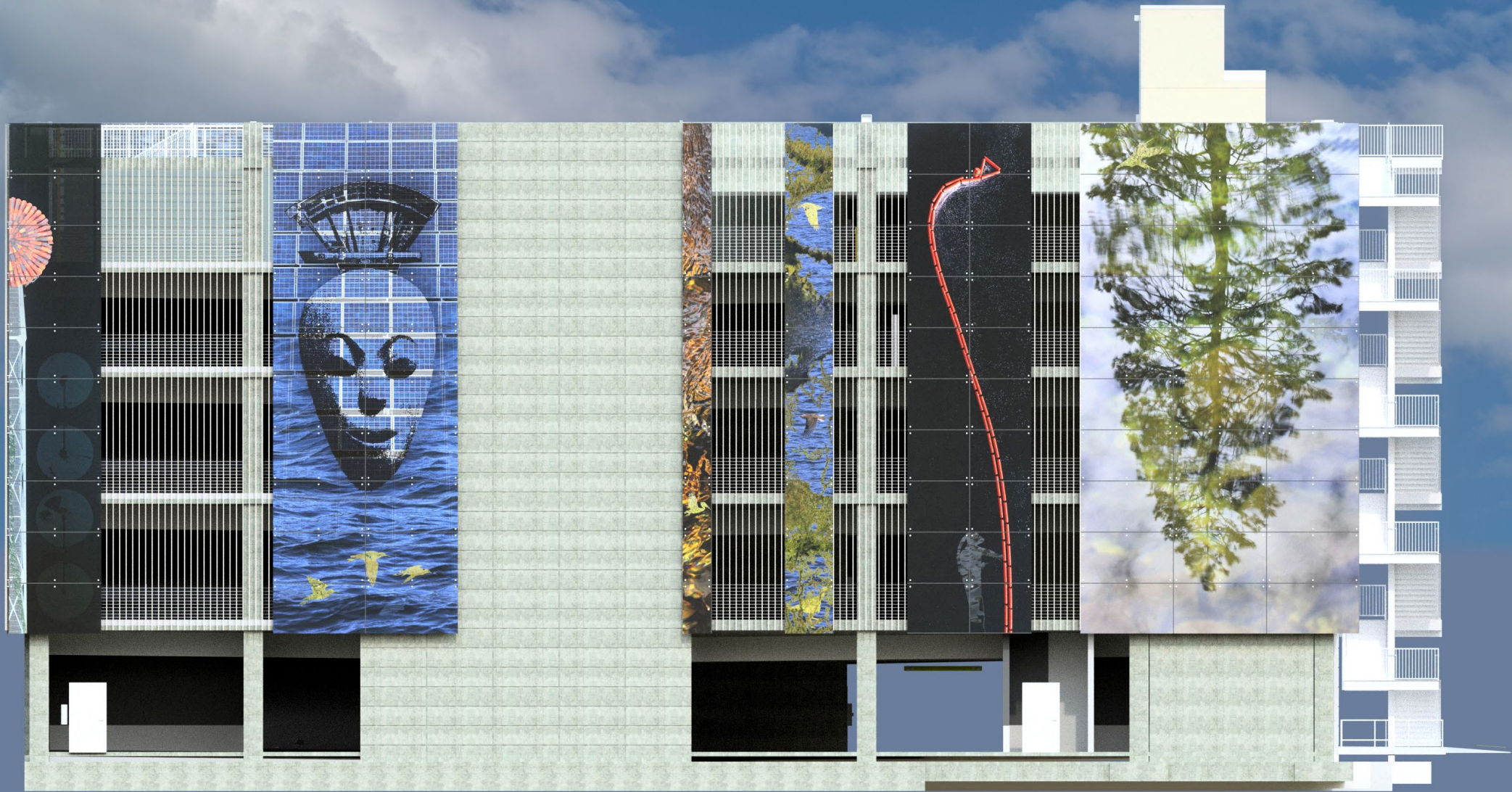








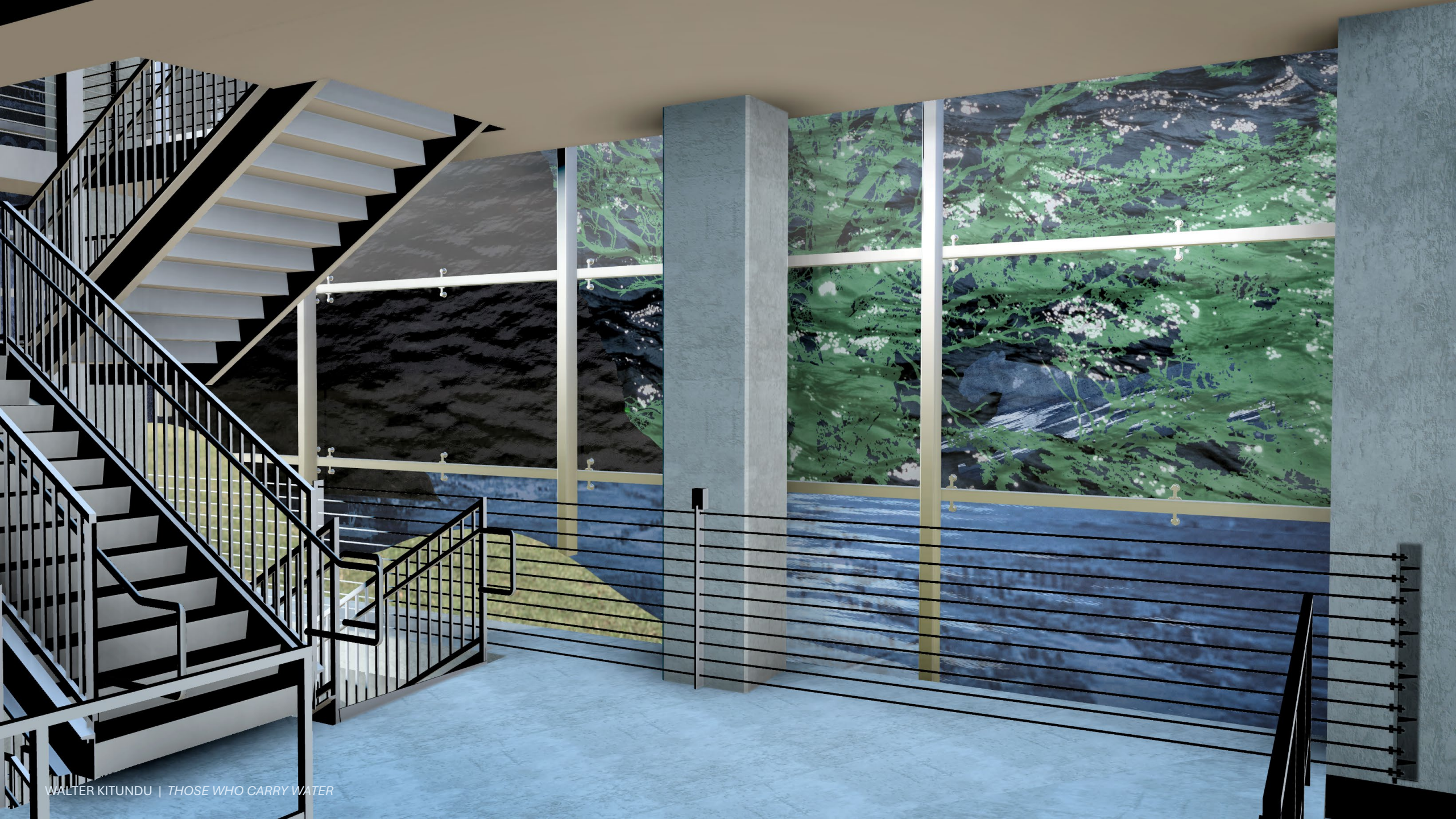








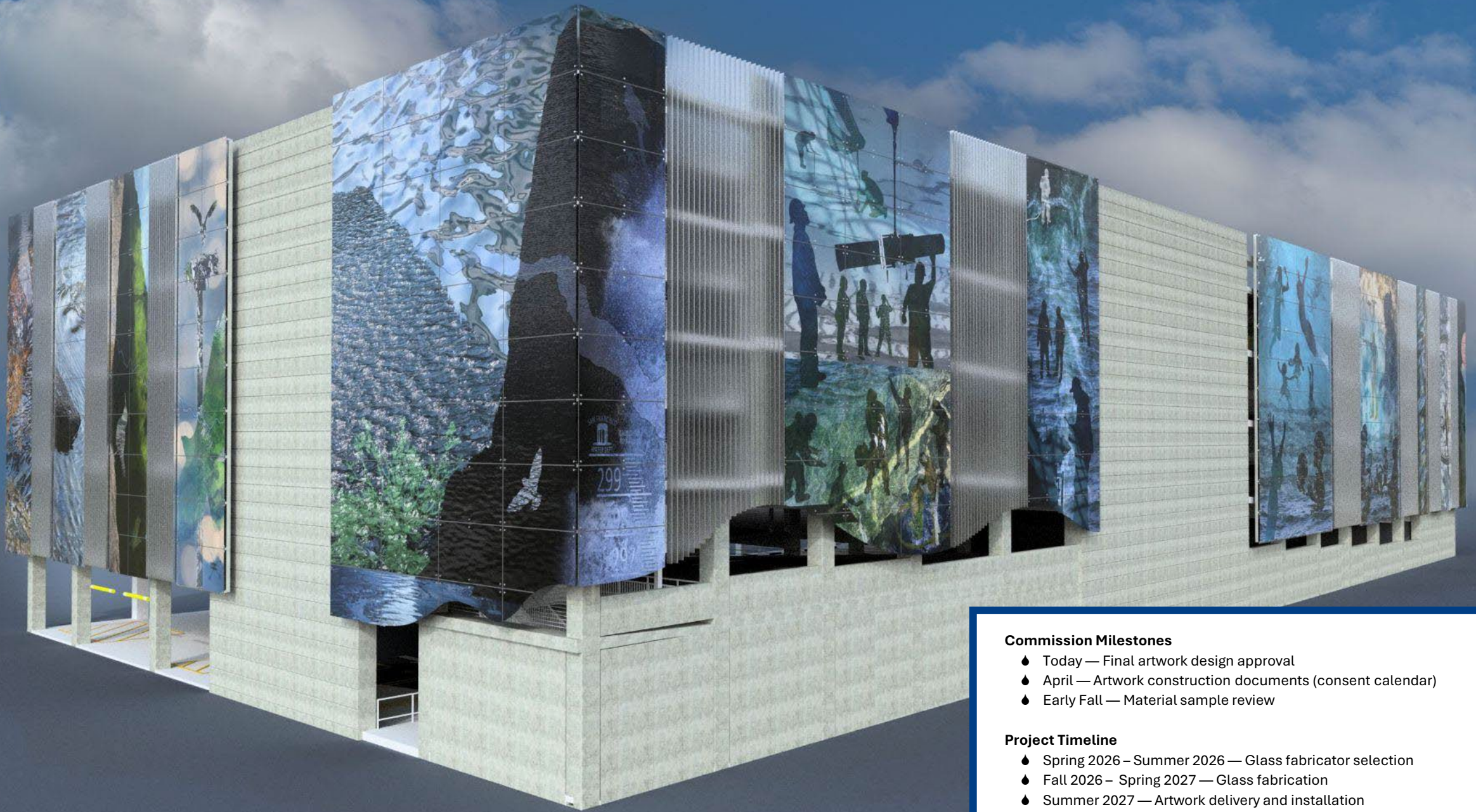






I always have dreams about water.  
Whenever I have challenges my  
connection to water helps me feel better.

*Angelica*



#### Commission Milestones

- ◆ Today — Final artwork design approval
- ◆ April — Artwork construction documents (consent calendar)
- ◆ Early Fall — Material sample review

#### Project Timeline

- ◆ Spring 2026 – Summer 2026 — Glass fabricator selection
- ◆ Fall 2026 – Spring 2027 — Glass fabrication
- ◆ Summer 2027 — Artwork delivery and installation
- ◆ Fall 2028 — End of Construction