

# West Field Garage 2

Civic Design Review: Phase 1 - Schematic Design

**Austin Webcor JV**

**Corgan | Kuth Ranieri JV**

Contract Number: 11917.66

## Project Goals

### Good Neighbor

Respect massing and scale of adjacent buildings

### User Safety

Support pedestrians and vehicles coexisting

### Campus Heart

Craft vibrant and active spaces

### Human Centric

Create comfortable spaces and environments

### Building Performance

Design decisions to reduce carbon

# Agenda

---

1

## Project Introduction

(Goals, Site, and Program)

2

## Project Overview

(Circulation, Art, Sustainability)

3

## Project Design

(Sections, Elevations, Renderings)

4

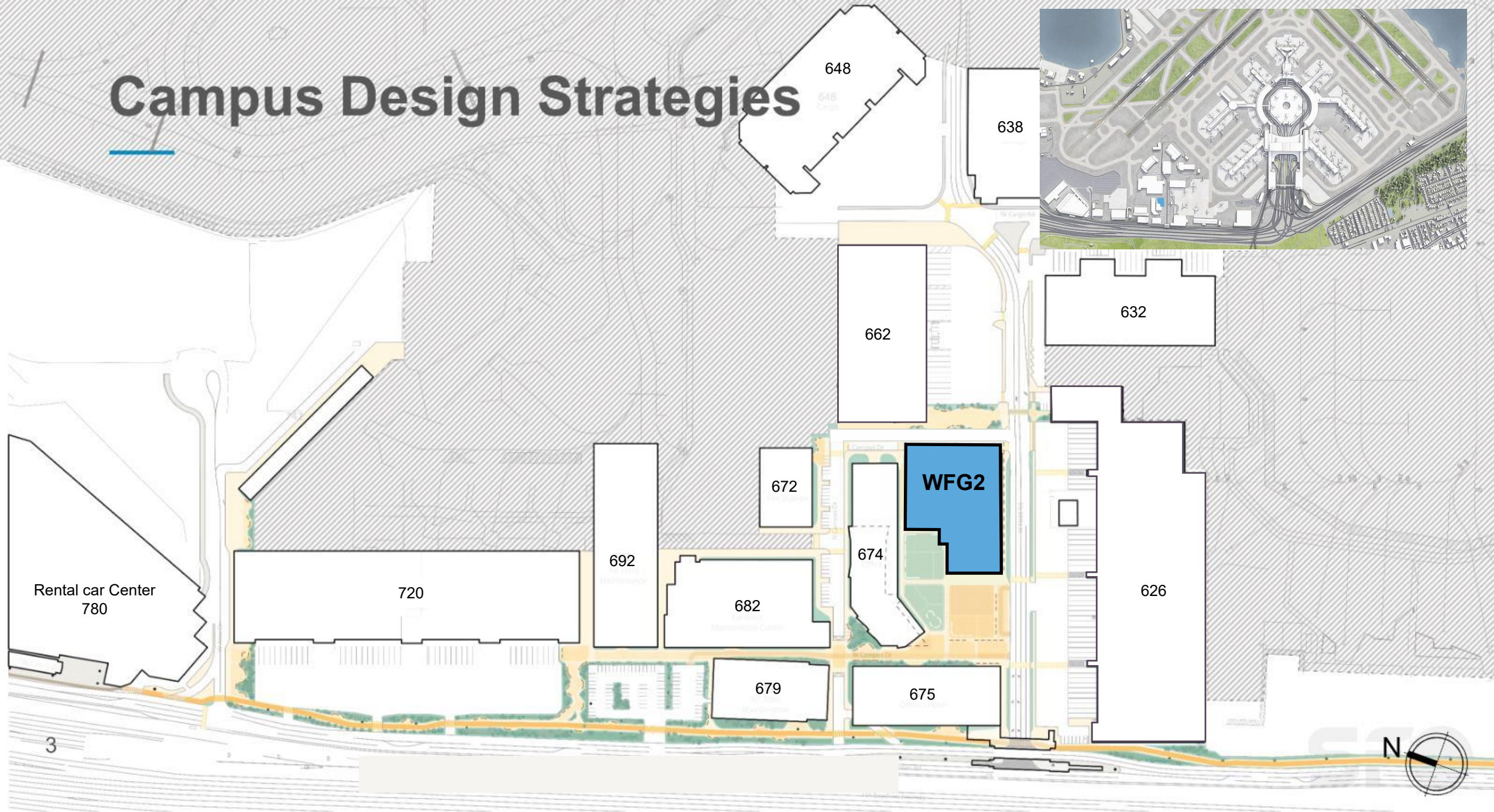
## Appendix

(Architectural Drawings, Renderings)





# Campus Design Strategies



# Project Site & Context

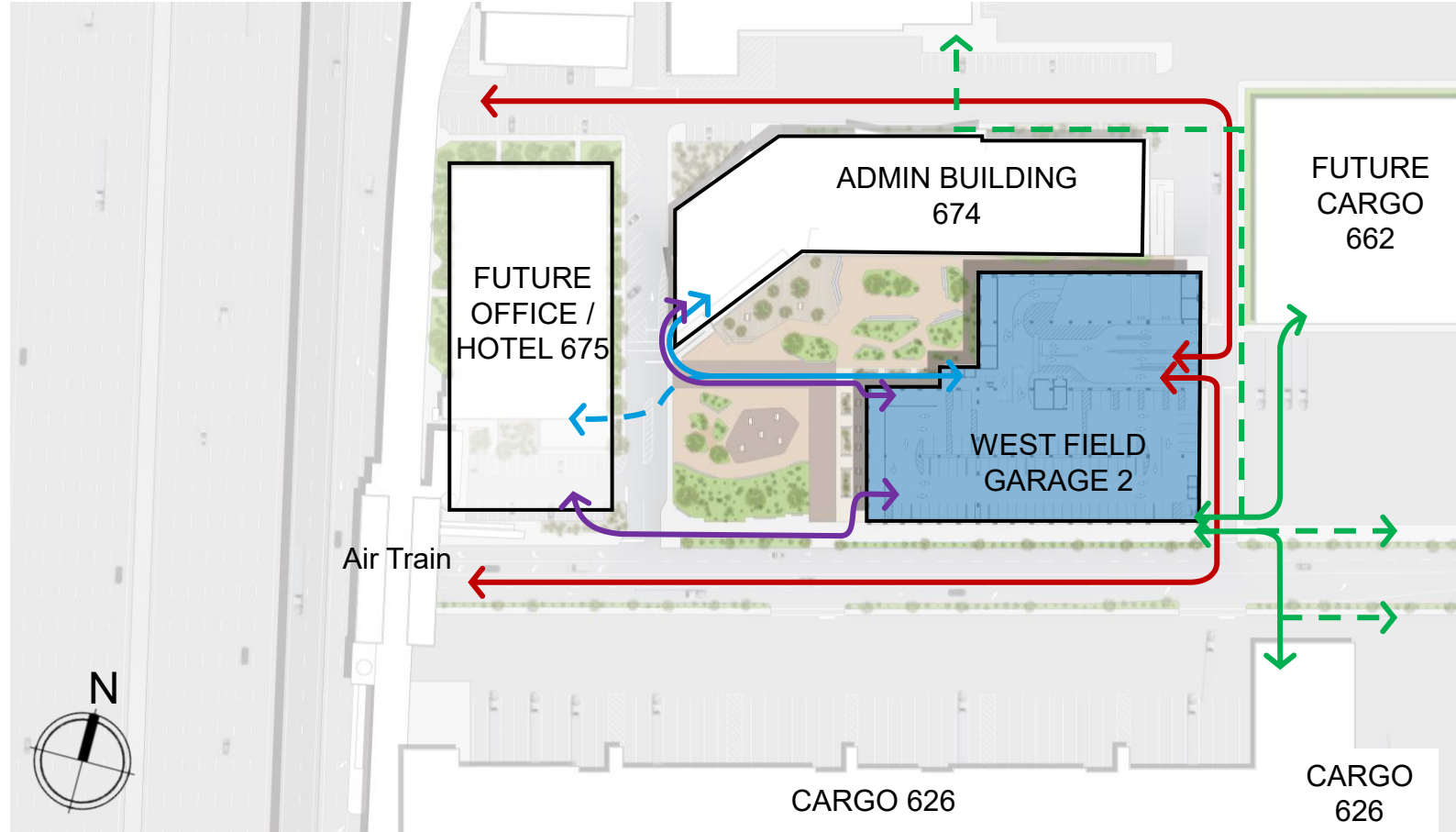
ADMIN  
BUILDING 674



WEST FIELD  
ROAD AIR  
TRAIN STATION



CARGO 626





# Project Program & Layout

**Employee Parking Garage:** 1,100 stalls

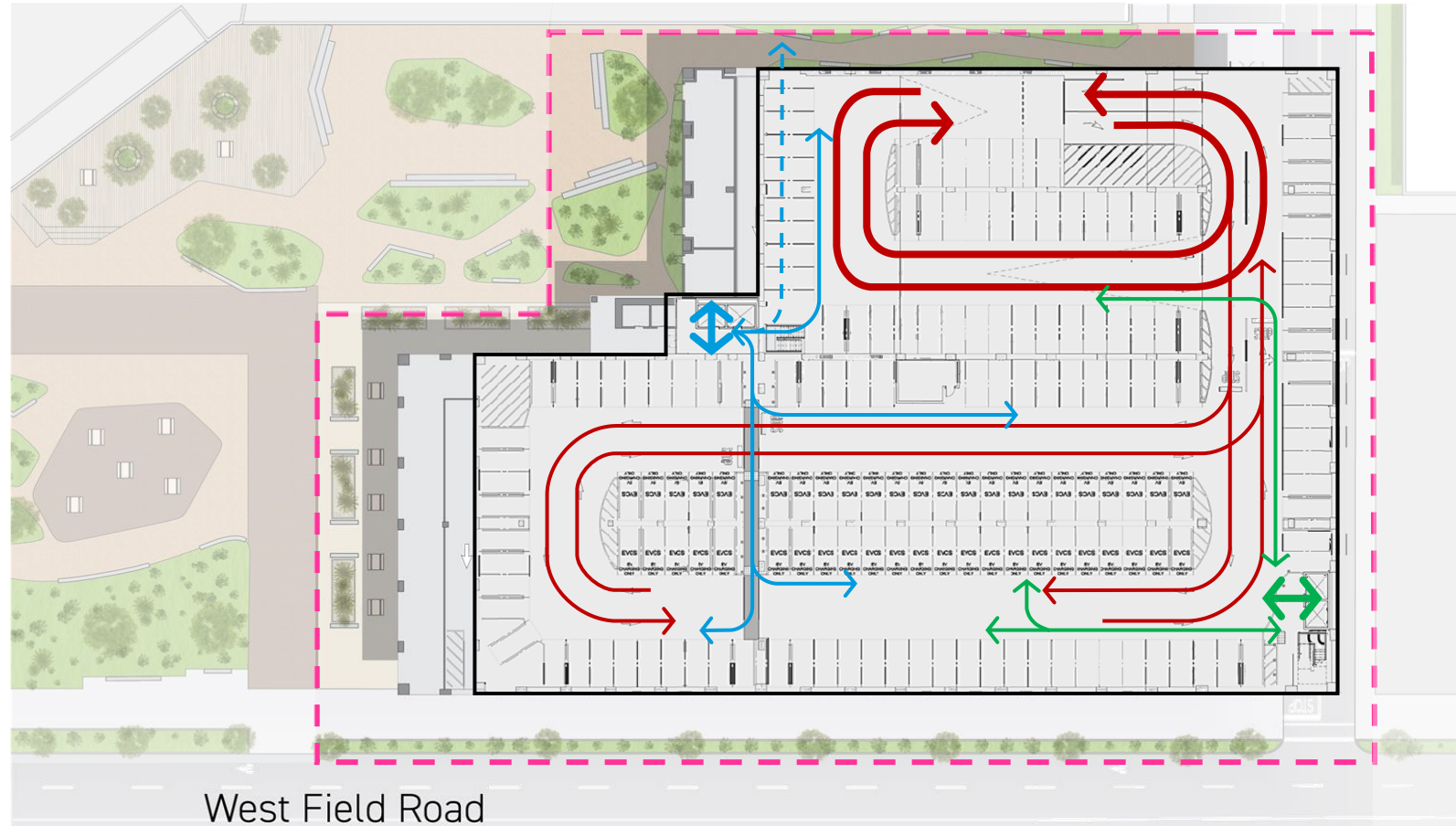
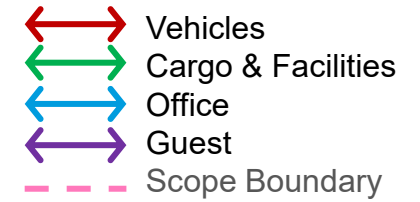
**Garage Construction:** naturally ventilated concrete structure, parked-on-ramps

**Garage Size:** 420,000 SF, 7-Levels

**EV Charging:** 110 stalls & capacity for 110 more in the future

**Future Flexibility:** PV canopies, facilities trucks, rideshare, and guest parking

**Vehicle/Pedestrian Interaction:** Separate vehicle entry and elevator at each level



Typical Upper Level

# Project Overview – Garage User Interfaces



## User Groups



Central Campus Residents



First-Time Visitors



Occasional Guests



Driving Visitors



VIP Guests



Support Services

Activity and play

1



Seating

2



Shelters

3



Building ground level conditions

4



Planting and landscaping

5



Building facades

6



Pedestrian crossings

7



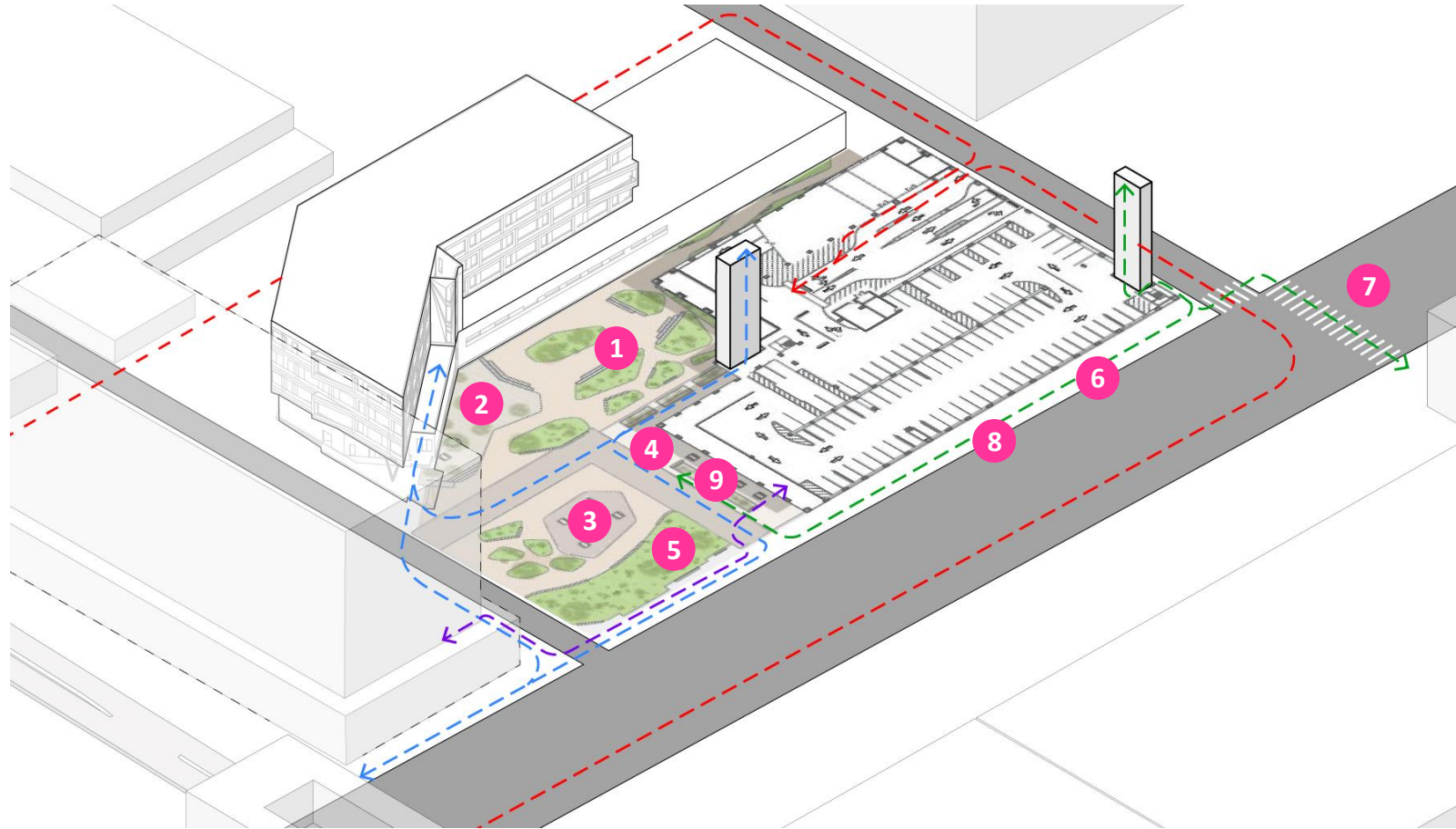
Boundary Treatments

8



Vendors and stalls

9



# Project Overview – Public Art Integration Opportunities



1

## Two-Dimensional Art

Paint, Wallpaper



2

## Integrated Screens

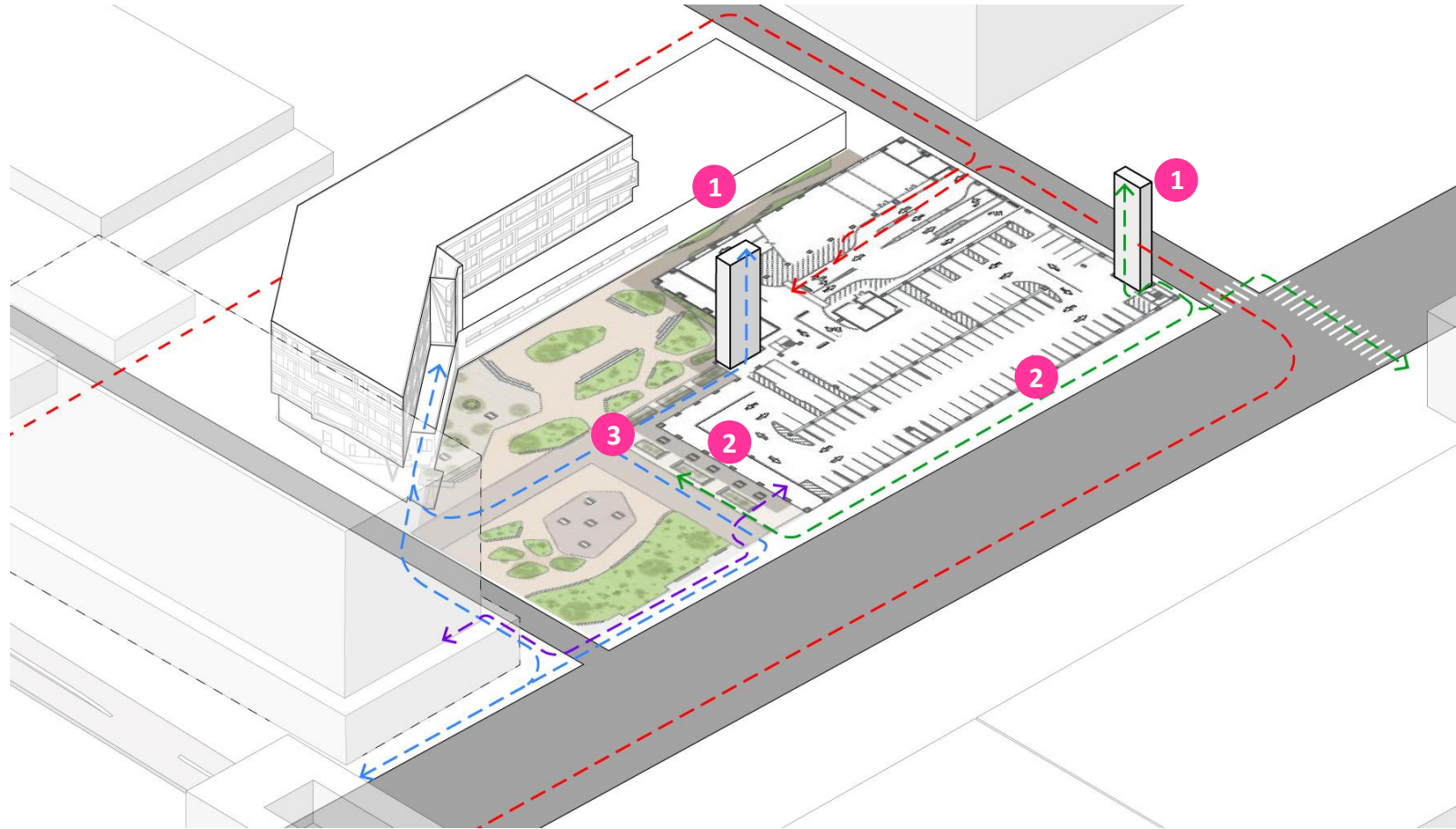
Perforated Metal Panel



3

## Sculpture

Meander Wings,  
Marc Fornes (2021)





# Project Overview – Sustainability

## Human

- 1 Vegetated gather spaces
- 2 Daylit stairwells
- 3 Biophilic textures & materials

## Energy

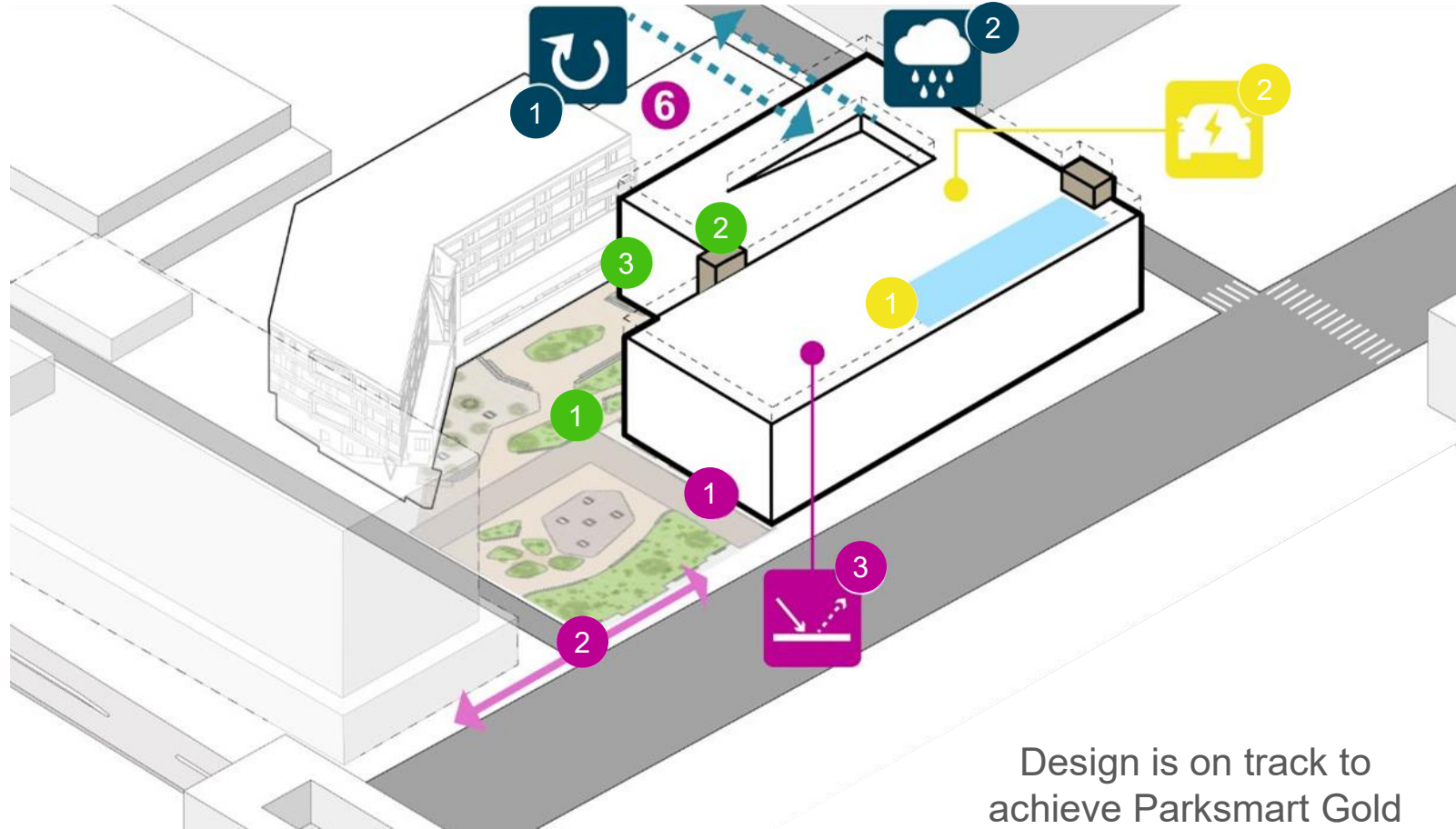
- 1 Zero net energy (PVs)
- 2 Flexible for 100% EV charging

## Water

- 1 Recycled water irrigation
- 2 Campus stormwater recycling

## Site

- 1 Onsite stormwater bioswale
- 2 Safe pedestrian paths and bike storage
- 3 Cool roof to lessen heat island



Design is on track to  
achieve Parksmart Gold



# Project Design – Massing

## Align

Massing that matches edges of the adjacent building to create a well-defined courtyard space

## Reduce

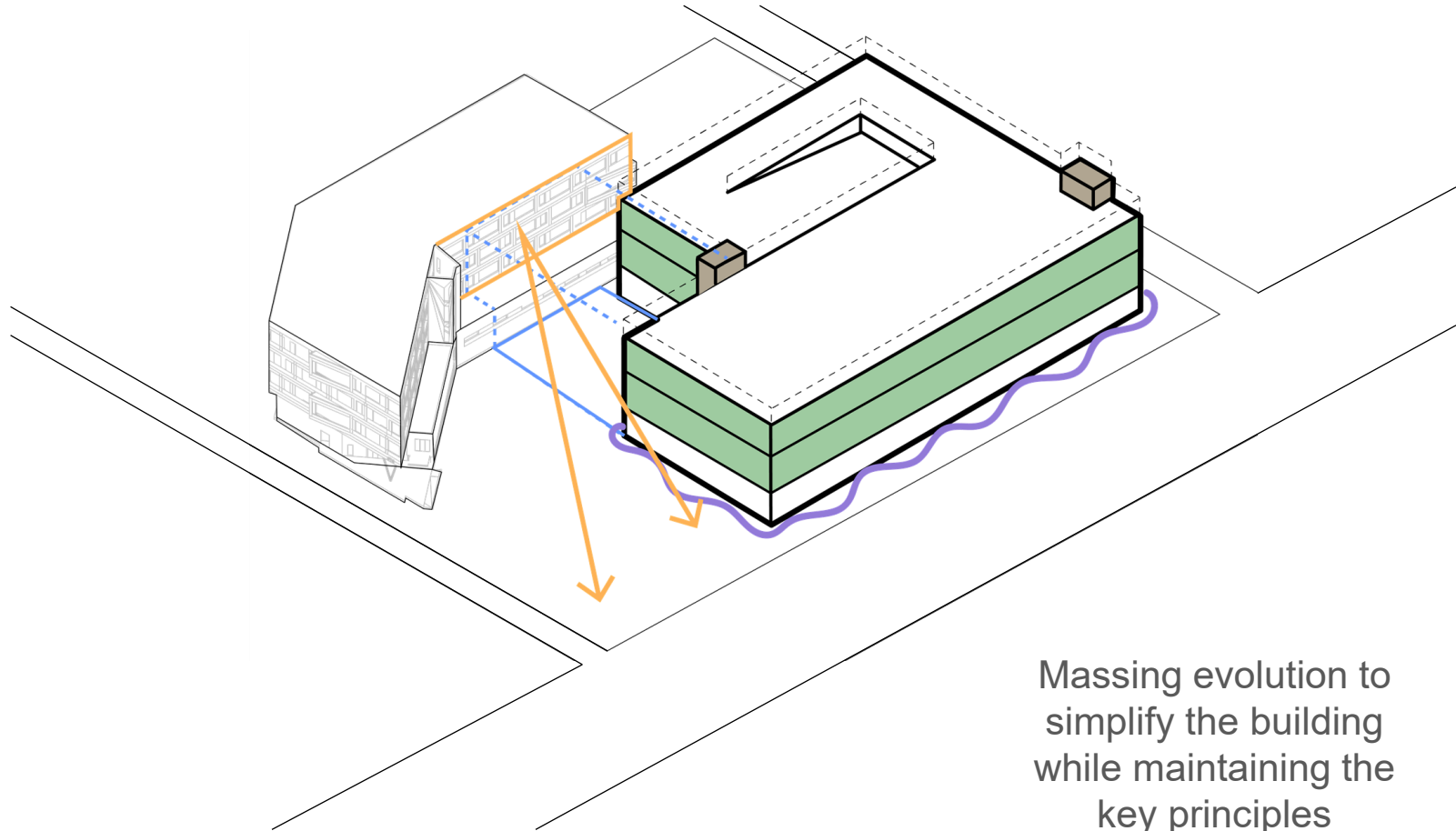
Large scale breakdown of the massing with façade treatment

## Setback

Generous open space to extend and preserve office views

## Enrich

Overhangs and landscaping provide comfortable, human-scale spaces at ground level

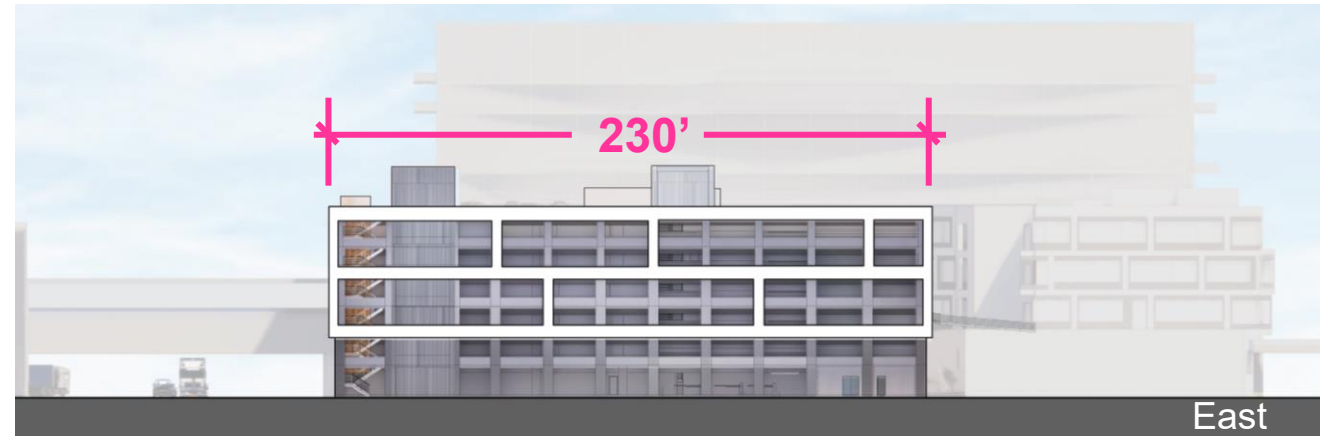
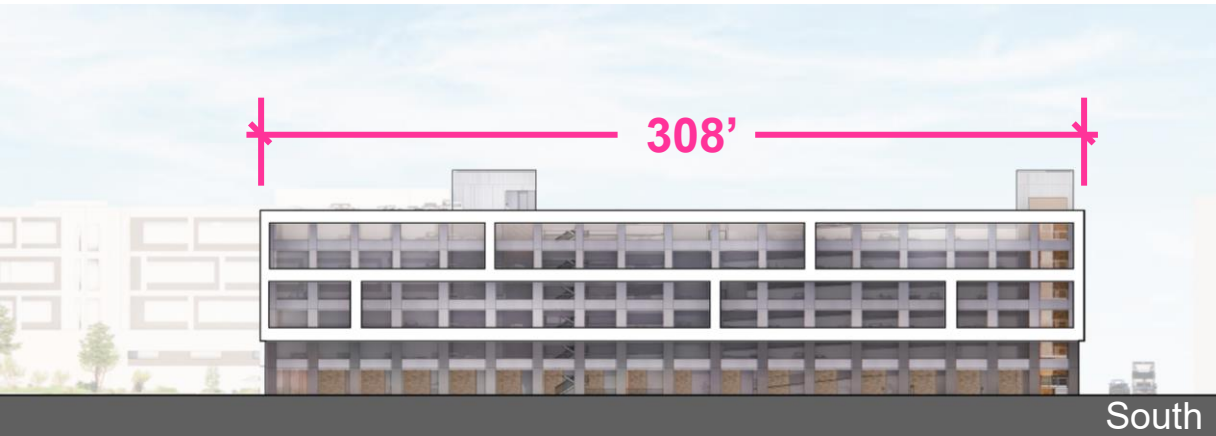


Massing evolution to simplify the building while maintaining the key principles

# Project Design – Site Section looking East



# Project Design – Elevations





# Project Design – Material Precedents

**Façade Pattern:** White Metal Panels

**Structure:** Concrete Structure at Typical Floors

**Street Level Structure:** Board-Form Concrete

**Street Level Pedestrian Walk:** Perforated Metal Panels & Perforated Polycarbonate

**Cores:** Grey Metal Panels



White Metal Panel



White Metal Panel



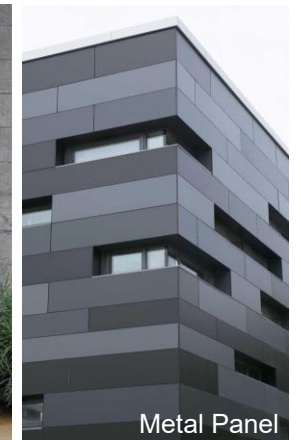
Concrete Structure



Perforated Metal Panel &  
Perforated Polycarbonate



Board-Form Concrete



Metal Panel

# Project Design — Guest View from West, Future Office/Hotel Lobby 675



Further iteration on the facade design of the cores will take place leading up to Phase 2.



# Project Design — Office Worker View from Northwest, Admin Building 674



The garage is being developed in conjunction with early design studies for the campus heart and we will continue to evolve how the building integrates into the landscape.



# Project Design — Cargo Worker View from Southeast, West Field Road

Integration of the architectural entry portals and exterior wayfinding signage will be developed for Phase 2.



# Project Design — Guest View from Southwest, AirTrain Station



Additional detailed design will focus on the texture, color, and lighting in the pedestrian zones of the garage.