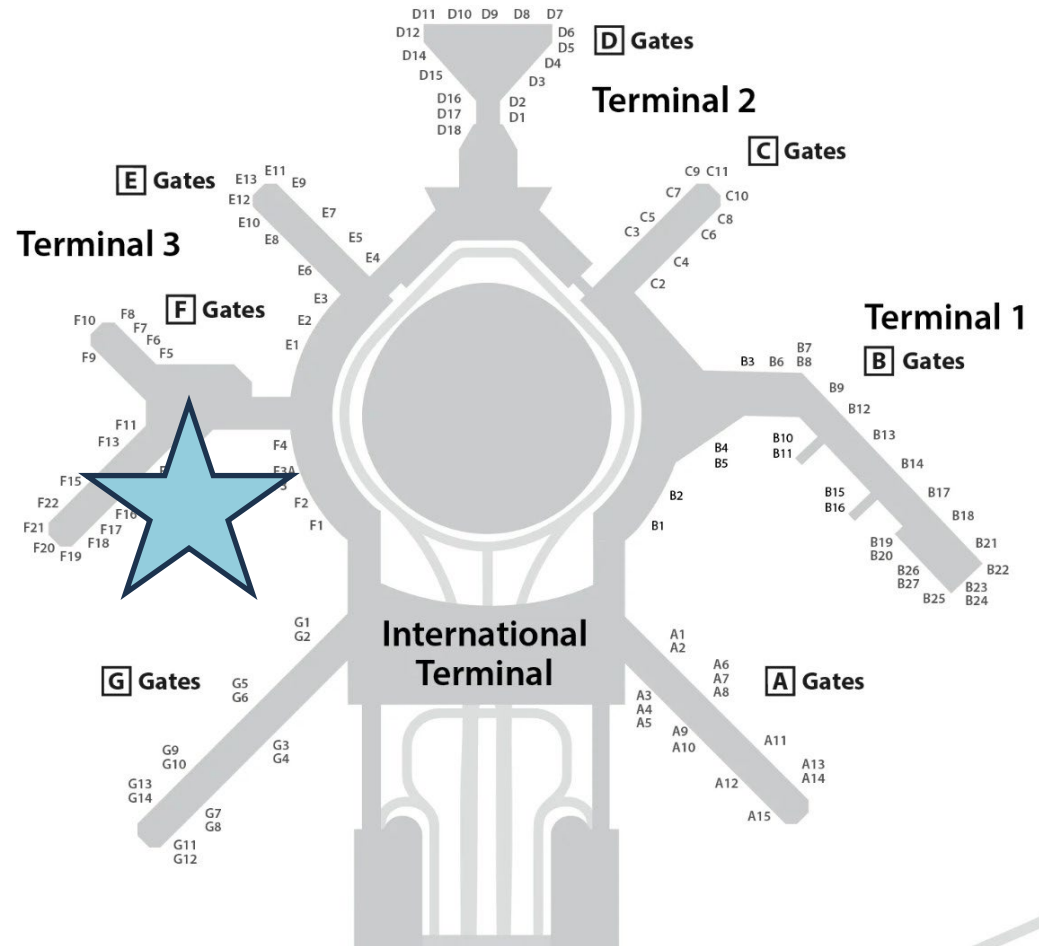


SFO Terminal 3 West

Superhighway Integrated Wall & Suspended Sculpture

FINAL DESIGN

May 20, 2026



A Day in the Life in SF

In San Francisco, the weather, sky, and light change dramatically throughout a single day and are an ever-unfolding backdrop to the theater that is our rich culture of food, art, and life. The Crosstown Trail presents a unique physical embodiment of this experience.



Eamon Ore-Giron

Superhighway Integrated Wall
East & West Murals



Infinite Regress: Oro en Paz I, sketch



Infinite Regress: Oro en Paz II, sketch













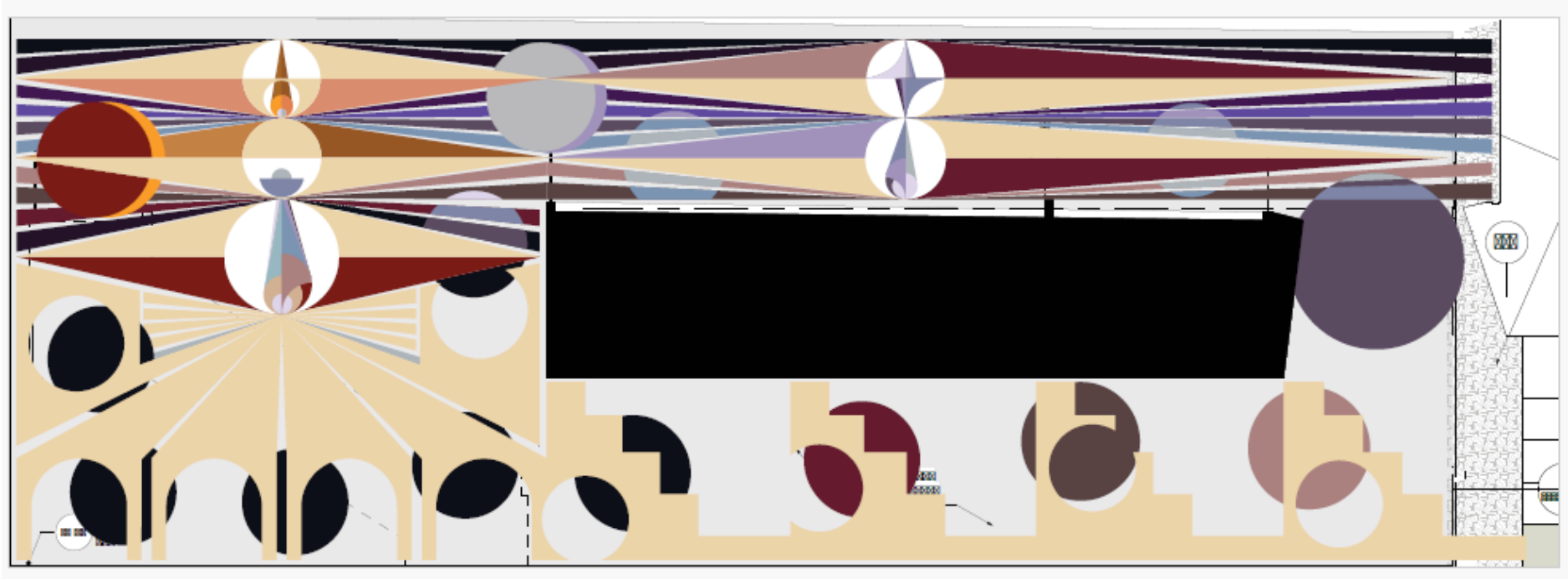
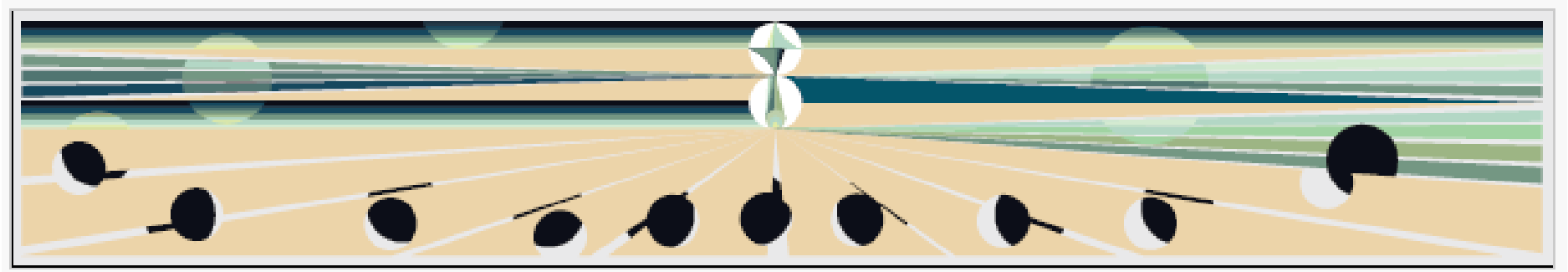
ge, C4C Lounges & Clubs →
Gates →



← G Gates ↑ F1 - F22
← AMEX Lounge, C4C Lounges & Clubs ↑ Restrooms

A B C D E Gates



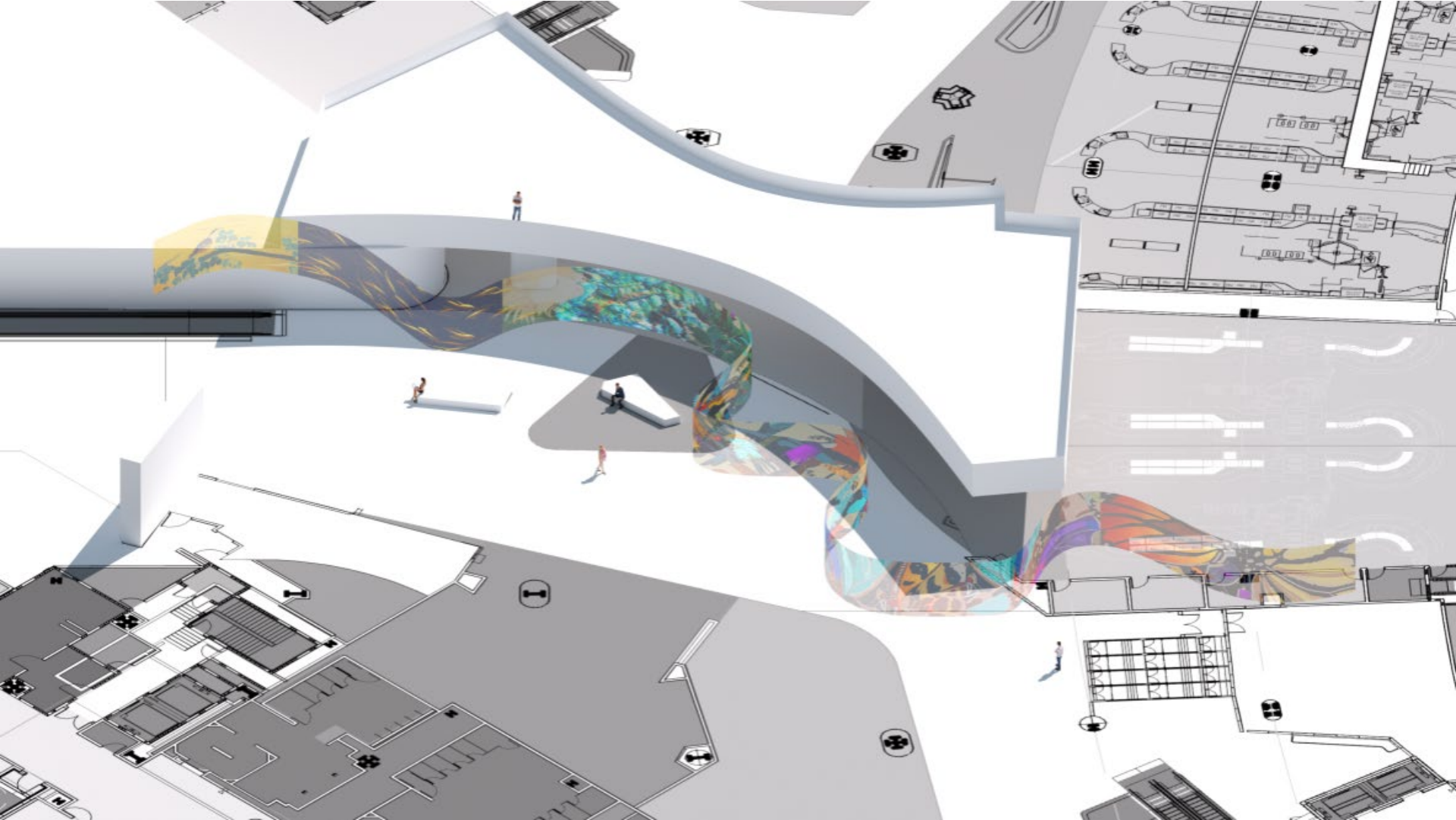


Final Design

Pae White

Suspended Sculpture





Anodised chain

Cadena anodizada

Thickness

Thickness of the aluminium wire:
Kriska 5/64" / 2 mm and Snina 1/16" / 1.5 mm.

Maximum load

Maximum breaking load per strand:
Kriska 37.5 lbs / 17 kg and Snina 24 lbs / 11 kg.

Material

Anodised aluminium chain with an 8.5 to 12 microns thick coating depending on the colour and finish.

Composition

Material made of 99.99% aluminium.

Appearance

Soft appearance. Imperceptible roughness.

Opacity

Opacity between 40% and 60% with an angle of inclination of 90°, depending on spacing and finishing (brilliant or satin).

Conductivity

Does not conduct electricity.

Acoustics

No sound absorption.

Fire-resistance

A1-rated product (non-combustible).
CLASS A - ASTM E84-23.

Cleaning

Resistant to acidic products with pH below 8 (do not use alkaline products).

Rust

Salt spray test: 1000 hours.
Humidostatic test: 1000 hours.

Temperature

Working temperature: -11 F / -24 C up to +154 F / 68 C.

Weight

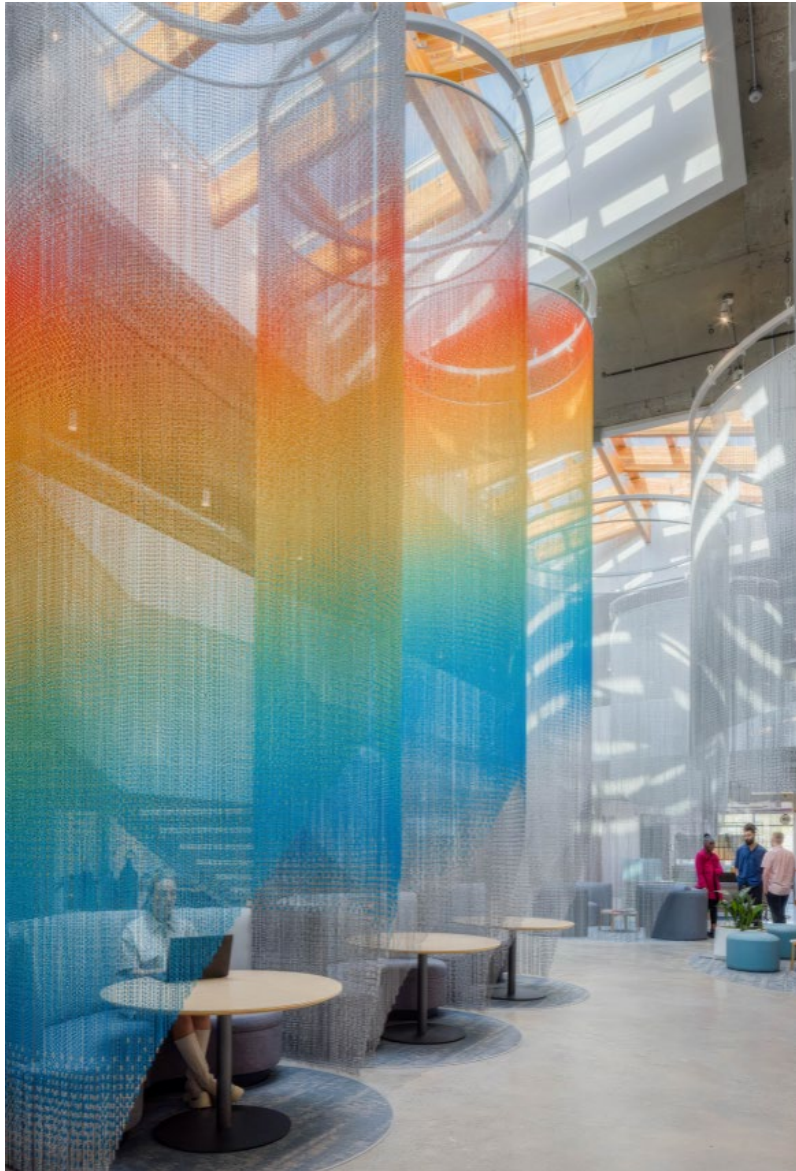
Kriska standard: 0.62 lb/sqft - 3.03 kg/m².
Kriska Half-drop: 0.79 lb/sqft - 3.88 kg/m².
Snina standard: 0.46 lb/sqft - 2.25 kg/m².
Snina Half-drop: 0.61 lb/sqft - 2.96 kg/m².

Material:
Anodized Aluminum Chain

Opacity/Free Area:
40%-60%

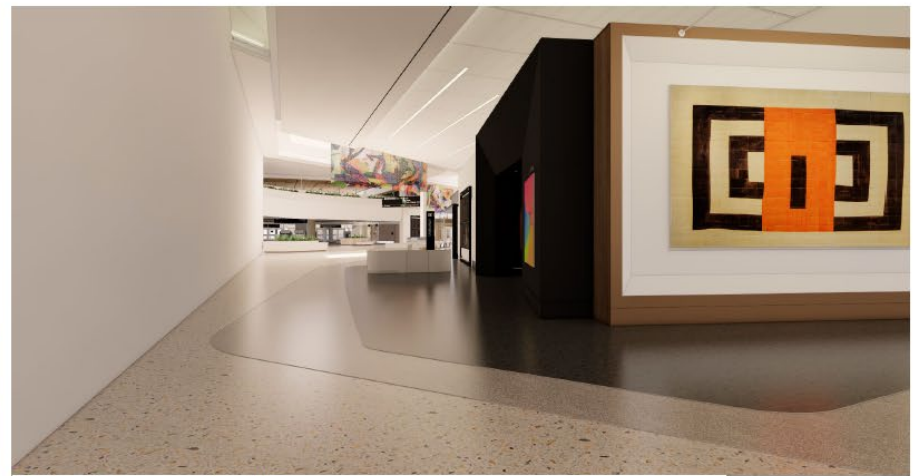
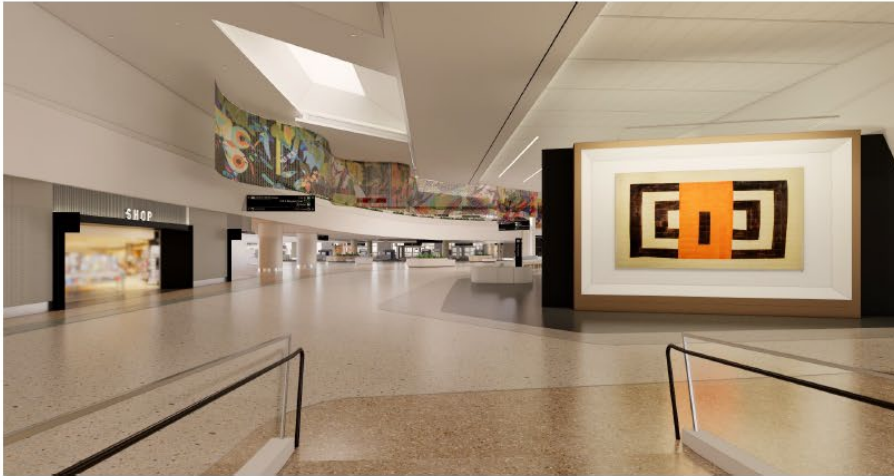
Fire-Resistance:
Class A – ASTM E84-23





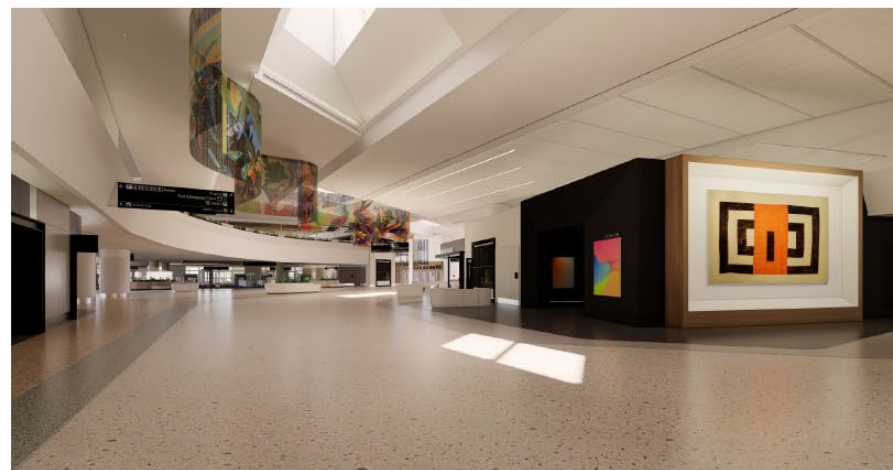
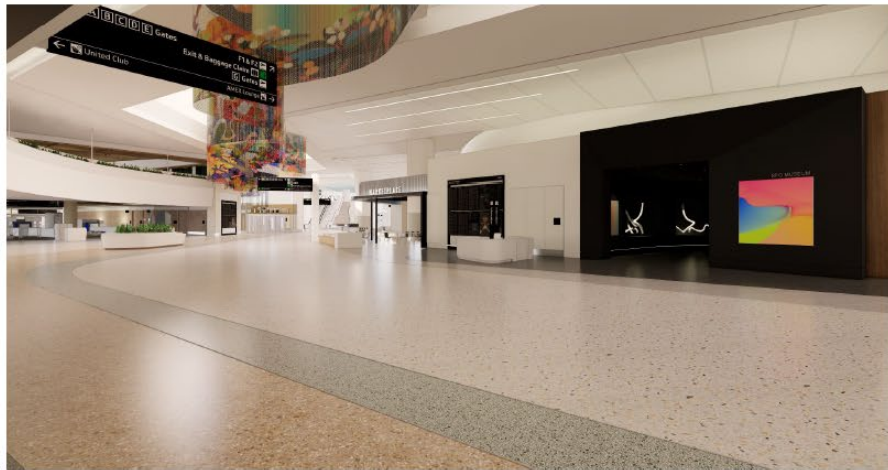
Views from F-Connector

Single Arc

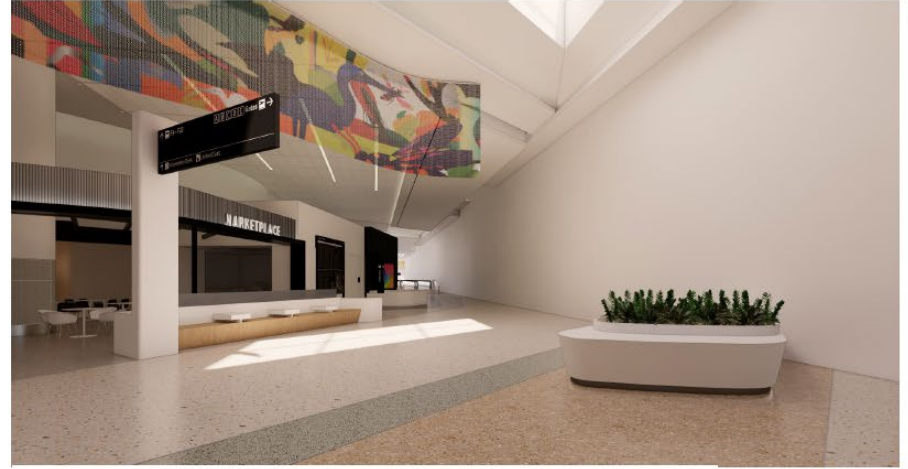


During Temporary Condition

Views from F-Connector Single Arc



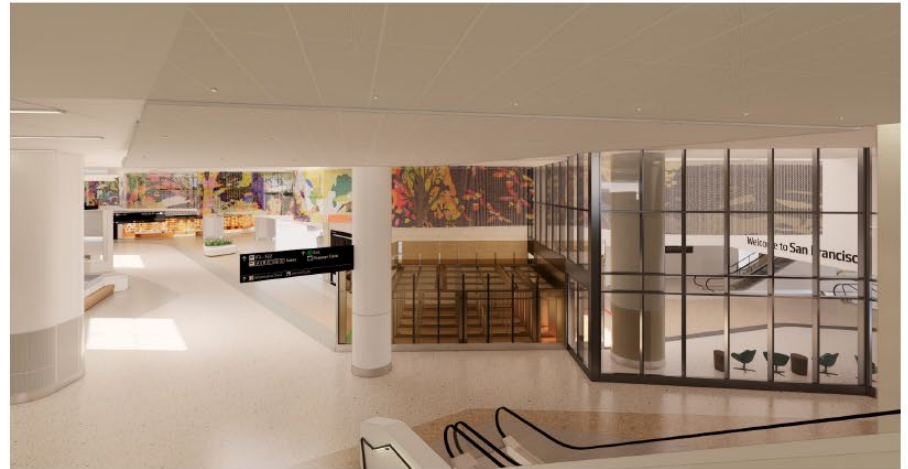
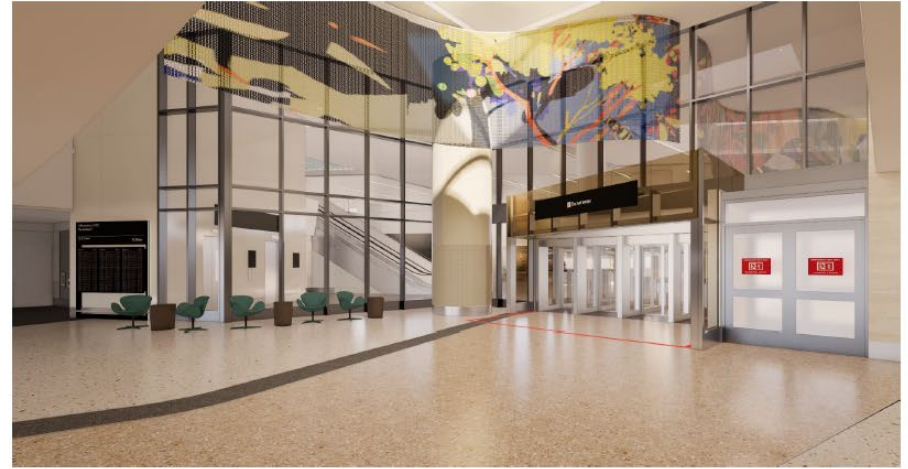
Views from F-Plaza Single Arc



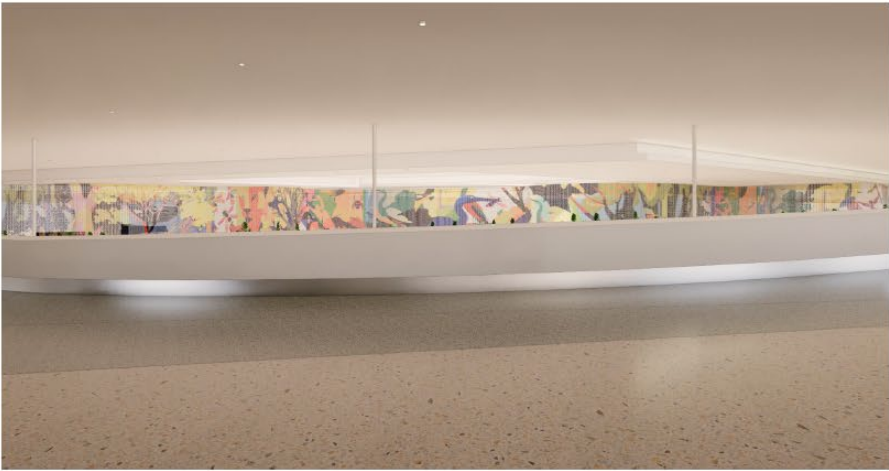
During Temporary Condition (Sim.)



Views from F-Plaza, Mezzanine Superhighway Single Arc



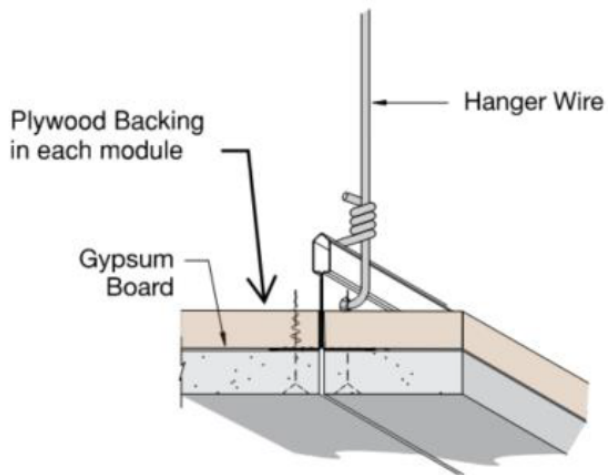
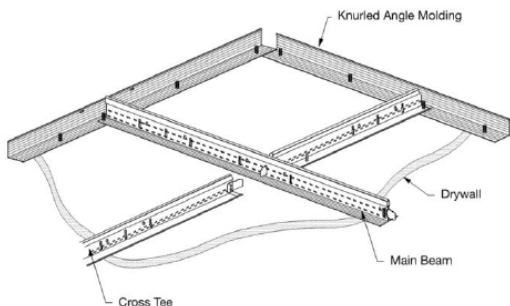
Views from Mezzanine Bridge
Single Arc



SYSTEM FRAMING

HANGING & FRAMING

The grid system is comprised of main beams and cross tees that are typically suspended by hanger wires to the structural deck. Sections of main beams lock together end-to-end while cross tees span between the main beams. The ends of the main beams and cross tees rest on the angle molding that run around the perimeter of the space.



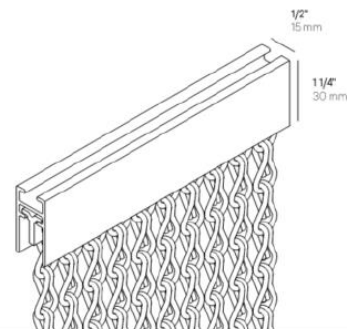
Armstrong Frameall Suspended Ceiling System

- Plywood backing to be installed at each grid module where art is attached to (typical module is 48" x 48" or 48" x 16" where cross tees are needed)
- Armstrong Frameall ceiling system can hold 7 pounds per sq ft
- 4'-0" O.C. maximum* spacing for each Kristadecor attachment (confirm attachment method and spacing with artist)
 - * Maximum is based on current PLF and ceiling grid capacity.

Hanging Art (Preliminary Figures from Artist)

- Weight: 2320# for 290FT Path (10'-0" Long Chains)
- PLF: 8PLF for 10'-0" Long Chains | PSF: 0.8PSF
- Attachment Spacing: 18" O.C. Max (w/ Additional Cross-Tees & Plywood Backing as Req'd)

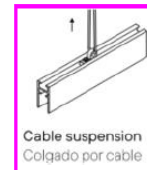
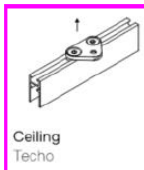
SLIM



Rectangular and discreet, this is the ideal solution for projects where the rail doesn't need to stand out.

De forma rectangular y muy sobria, es la solución idónea para proyectos en los que la guía no requiere de ningún protagonismo.

INSTALLATION OPTIONS OPCIONES DE INSTALACIÓN



Project Timeline

Visual Arts Committee Approval

May 20, 2026

Full Arts Commission Approval

June 1, 2026

Fabrication

June 2026 – July 2027

Artwork Installation

August-September 2027

Open to Circulation

October 2027