

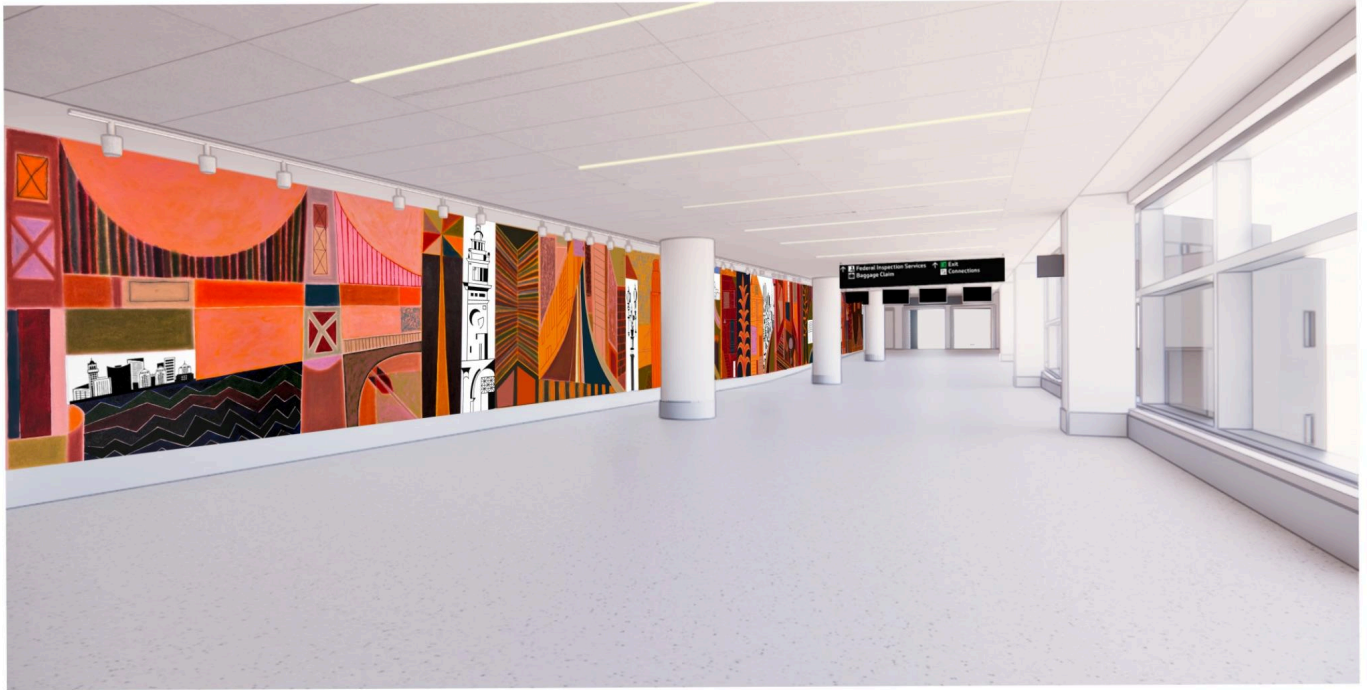
# MUZAE.

SFO Terminal 3 West Modernization Project - FIS West Art Wall Proposal

---

*From Bridge to Bridge and Our Life in Between*

## Proposal Designs:



# MUZAE.

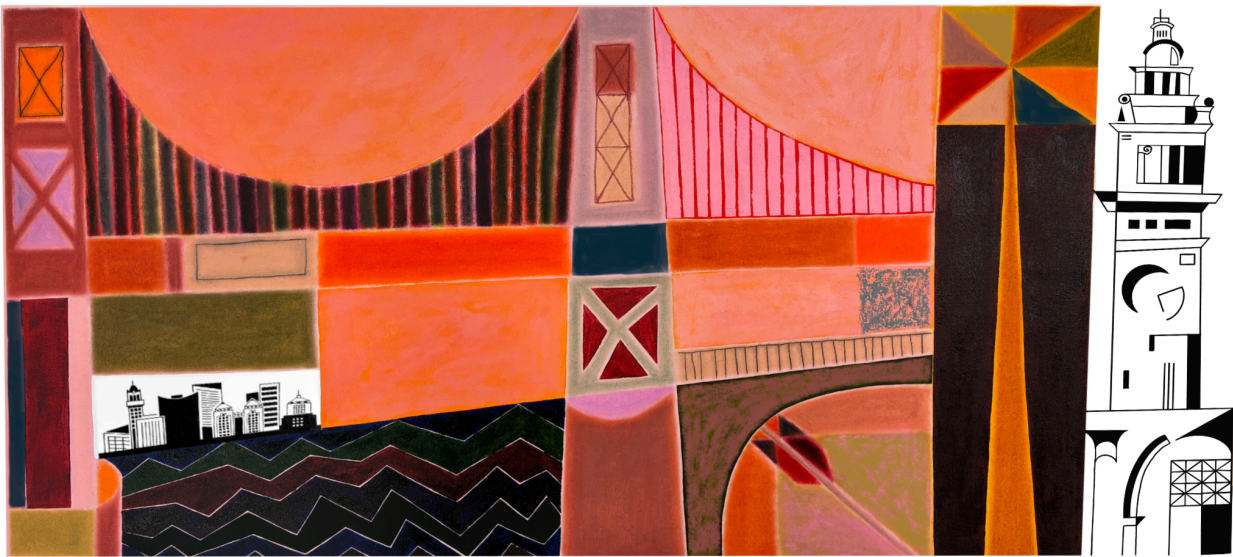
SFO Terminal 3 West Modernization Project - FIS West Art Wall Proposal

---

*From Bridge to Bridge and Our Life in Between*

## Proposal Design Sections and Description:

### Section I – Moring Sunrise over the Bay Bridge



Oakland Skyline

Homage to "Cupid's Span" by Claes Oldenburg

Palm Tree

Ferry Building

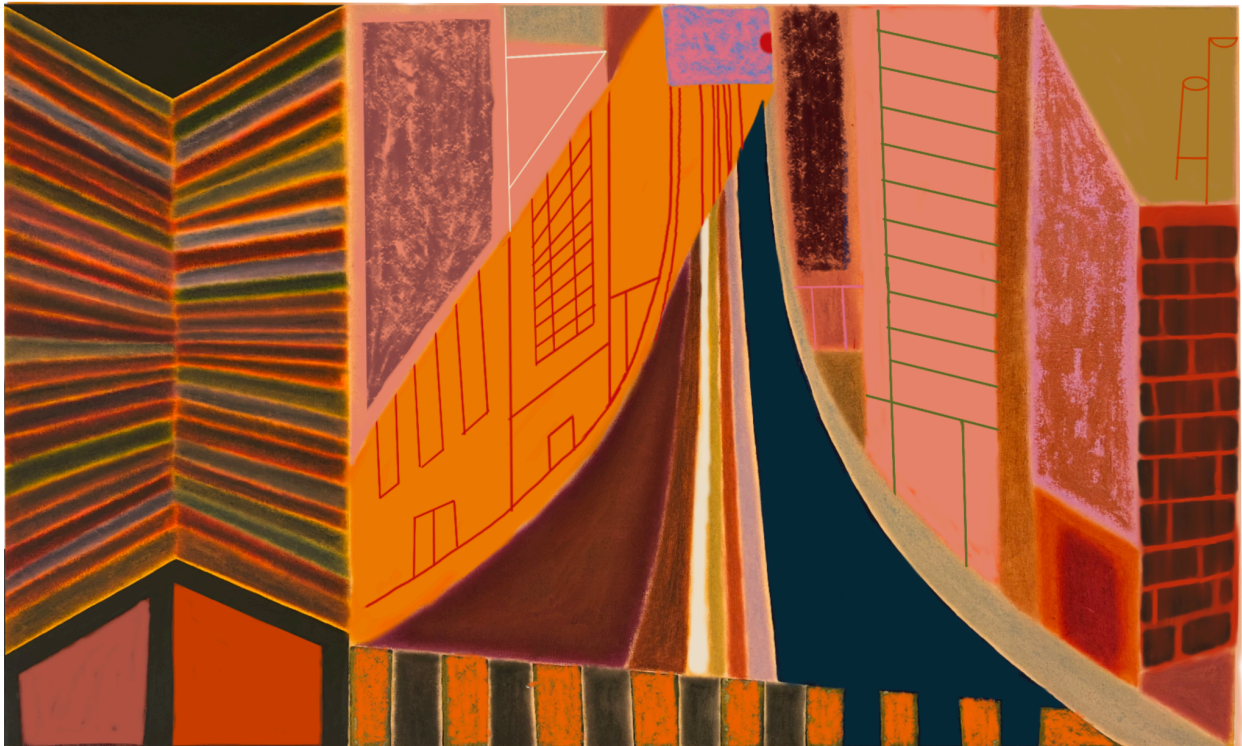
# MUZAE.

SFO Terminal 3 West Modernization Project - FIS West Art Wall Proposal

---

*From Bridge to Bridge and Our Life in Between*

## Section II – Morning Daybreak in the Financial District



Skyscrapers

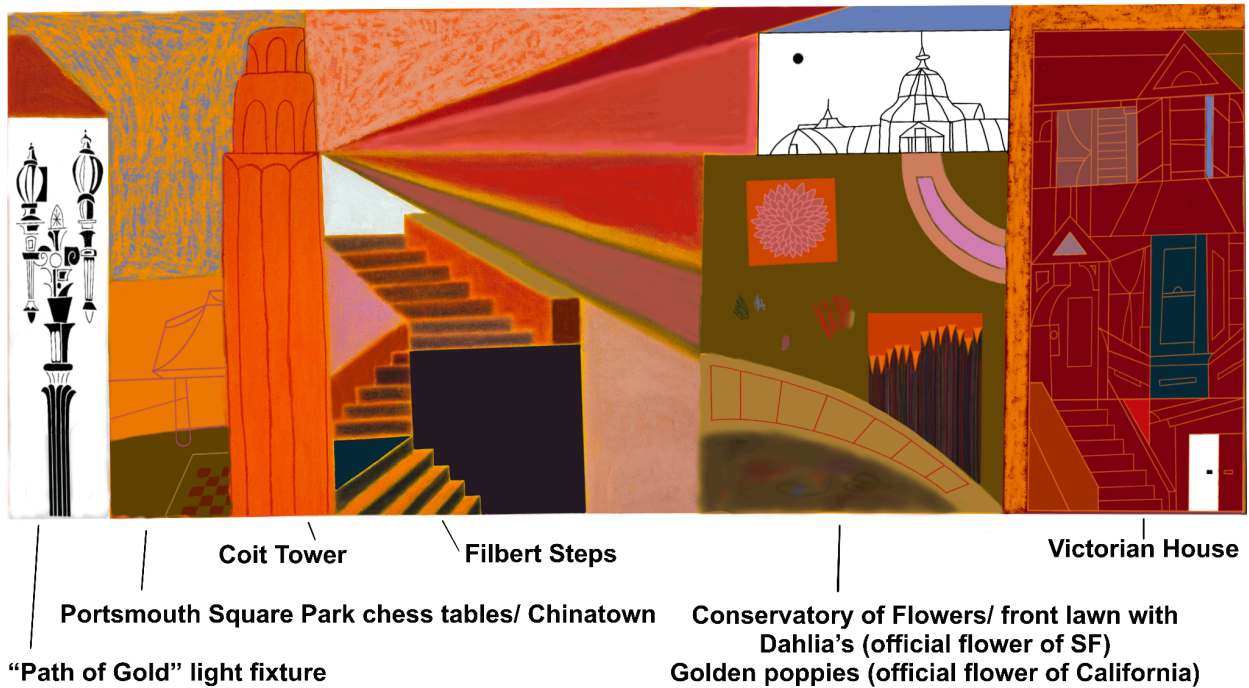
The morning sun shining down California Street

# MUZAE.

SFO Terminal 3 West Modernization Project - FIS West Art Wall Proposal

*From Bridge to Bridge and Our Life in Between*

## Section III – Midday Trek Through the City



# MUZAE.

SFO Terminal 3 West Modernization Project - FIS West Art Wall Proposal

---

*From Bridge to Bridge and Our Life in Between*

Section IV – Midday into Afternoon Scenic View, Up and Over the Hill



Native Succulent

Victorian House

San Francisco Cityscape from Twin Peaks  
(Originally drawn in 2014)

Bay Window Interior View of Sutro Tower  
3 different renderings of fog rolling in  
In reference to my old apartment in the Upper Haight

# MUZAE.

SFO Terminal 3 West Modernization Project - FIS West Art Wall Proposal

---

*From Bridge to Bridge and Our Life in Between*

Section V – Evening Stroll Through Stern Grove



Stern Grove/ Pine Lake Park

Abstracted Sunset Style House

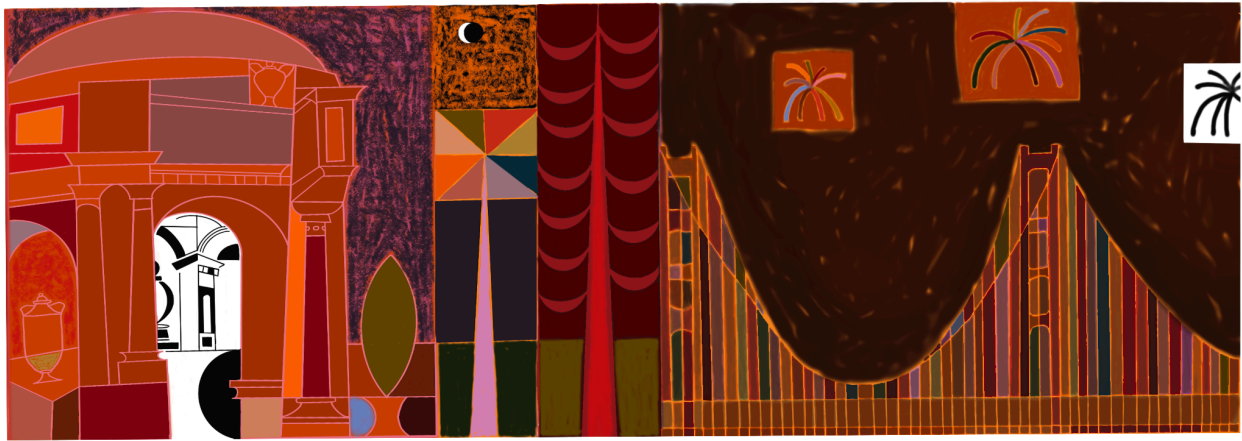
Front Porch Lantern

# MUZAE.

SFO Terminal 3 West Modernization Project - FIS West Art Wall Proposal

*From Bridge to Bridge and Our Life in Between*

## Section VI – Night falls over the Golden Gate Bridge

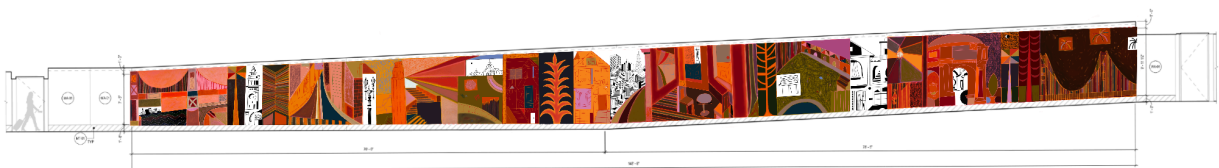


Palace of Fine Art

Native Trees

Fireworks over Golden Gate Bridge

West Art Wall – Elevation and Plan



*From Bridge to Bridge and Our Life in Between*

**Proposal Narrative:**

*From Bridge to Bridge and Our Life in Between* – San Francisco unfolds like a dream; fog-laced, sun-drenched, and impossibly alive. The magically infectious allure of San Francisco is an all-encompassing presence felt on every block and around every corner. Its picturesque beauty, tethered to a distinct cultural and historical identity, acts as both the backdrop to one's personal movie scene or even sometimes as the main character itself. My work typically involves translating the rhythm of everyday life into layered, narrative-based compositions, so the theme of “A Day in the Life in SF” aligns with my practice of reflecting the unique character of a place as seen through motion, time, and space. It’s impossible to not be inspired by the constant transformations of San Francisco; its shifting light, diverse architecture, and vibrant cultural energy that all unravels across a single day and from block to block. My proposed artwork *From Bridge to Bridge and Our Life in Between* is my bold, energetic and celebratory love letter to the City and mirrors the daily beauty, tempo, and charm of a city that feels both monumental and intimate.

Rooted in one's own unique experience of navigating San Francisco, this artwork begins at the city's eastern gateway. First crossing the Bay Bridge from Oakland past the Ferry Building and into the cascading hills of concrete and steel that make up the Financial District. From there, the journey moves through some of San Francisco's most iconic landmarks, reimagined as a condensed panorama of a typical day in the city. Portsmouth Square, Coit Tower, the Filbert Steps, the Conservatory of Flowers, Stern Grove, and the Palace of Fine Arts are staple places and neighborhoods that the viewer uncovers sequentially while navigating the artwork. Interwoven with these are everyday urban details like native plants, “Path of Gold” light poles, chess tables in the park, dahlia gardens, cityscapes, residential architecture, and bay window interiors replicate the charm one finds when immersed in the City and paints a vibrant portrait of a walk across town.

The color palette and structure of the mural are directly connected to the Terminal 3 theme of “A Day in the Life.” The artwork unfolds in tandem with the day. Soft dawn light breaks over Oakland, morning light shining down California Street, warming into midday gold past Coit Tower, deepening into an orange and rose spectrum at sunset, and finally dissolving into the rapturous hues of nightfall at the Golden Gate Bridge. Beneath the surface, underpainted tones carry the emotional weight of the hour, enriching the atmosphere and emotional resonance. The foreground's range of secondary tones are chosen to evoke a sense of warmth and comfort providing a visual embrace for travelers arriving home or experiencing San Francisco for the first time.

*From Bridge to Bridge and Our Life in Between*

The stylistic approach to this work is deeply rooted in my personal relationship with the Bay. Moving to San Francisco during the pivotal transition from adolescence to adulthood allowed me to embrace the Bay as my own in a new and transformative way. It was here that everything began for me: my practice, my community, and my sense of self as an artist. At twenty-one, newly immersed in San Francisco, I developed a black and white abstract geometric style that became my first definitive artistic language. In this piece, that style appears throughout, complementing the more colorful passages, creating a dynamic rhythm, and paying homage to the full breadth of what the Bay has meant to my artistic evolution. Years later, infused with the exuberance and eccentric spirit of San Francisco, I began introducing color inspired loosely by the expressive and eclectic facades of local homes. That era lives here in the bold, vibrantly colored sections of the composition and in the gestural marks that recall oil pastel techniques in my practice. Also present is my current approach of layering dark tones over vivid underpaintings that emit a soft and radiant glow, bringing the piece into the present moment of my creative journey.

To achieve these varying textures, maintaining a close collaboration between myself, the fabricators, and the materials will be essential. As I have begun building those relationships, the fabricators have assured me that the vision will translate beautifully through a combination of hand-glazed ceramic tile and Byzantine glass smalti. During production, I will spend dedicated time in the fabrication studio, working hands-on to develop and approve techniques that ensure the highest level of quality and uphold the artistic integrity of the work.

My passion and emotional connection to this work is what I'm focused on translating to the visitors' experience. Above all, the guiding principles behind *From Bridge to Bridge and Our Life in Between* stem from a deep and thoughtful consideration of how it will interact with SFO's guests. My background in sociology forms the foundation of my artistic practice and provides a lens of social engagement that shapes every decision made in the creation of this project. I understand profoundly the importance of artwork displayed at SFO, and particularly in this specific location. From my own experience, stepping off a flight into a completely new place, my eyes have never been more eager to see; searching for anything that offers a glimpse into the culture I am entering. For many, this work will be among the very first things they see when arriving in the Bay Area, in California, or even in the United States. For returning residents, it will serve as a marker of home. Being a part of the visual story of my home is an immense honor, one I do not take for granted. I want the piece to feel like a wholehearted hug, welcoming travelers after a long journey, and to offer each visitor, even if only for a brief moment, the chance to love the Bay as much as I do.

*From Bridge to Bridge and Our Life in Between*

The theme of *A Day in the Life in SF* unfolds as guests walk along the artwork, beginning with sunrise and ending at sunset. Between the two bridges that frame the composition, a series of diverse vignettes are woven together, mirroring the way the City itself reveals its variety. Bold lines, bright colors, and an overall warm tone command attention, even from the corner of the eye. Striking a balance between representational and abstract interpretations of San Francisco landmarks, the piece offers layers of intricate detail for those who stop to look closely, while remaining immediately legible and enjoyable to those who pass by quickly.

Ultimately, *From Bridge to Bridge and Our Life in Between* channels the magic of discovery found in exploring San Francisco. The joy of looking, listening, and learning from a culture that shifts around every corner becomes the central motif of this work. I invite travelers into a brief yet luminous moment of celebration, honoring the city's vibrant people, its lush and mystical land, the profound honor of arrival—an invitation into the boundless spirit of San Francisco.


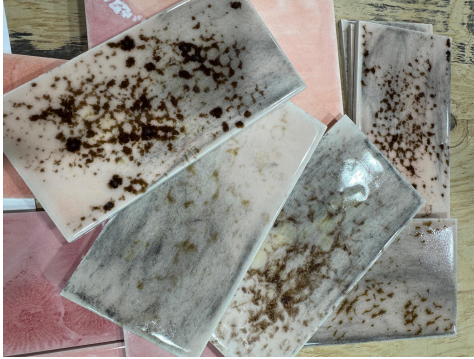
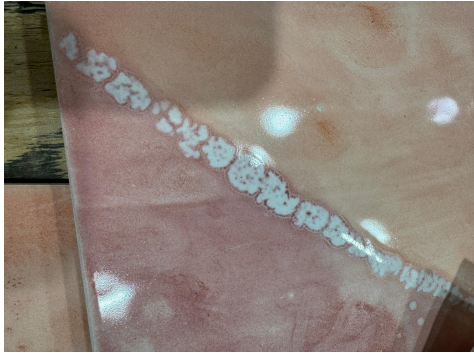

# MUZAE.

SFO Terminal 3 West Modernization Project - FIS West Art Wall Proposal

*From Bridge to Bridge and Our Life in Between*

**Proposed Materials:** A combination of hand-glazed ceramic tile and Byzantine glass smalti.



**Examples of textural translations provided by potential fabricator Mosaika:**

Painting Texture	Tile/ Glass Translation
 <ul style="list-style-type: none"><li>• sparse oil pastel over solid color in example: (yellow pastel over blue) (peach pastel over orange)</li></ul>	  

# MUZAE.

SFO Terminal 3 West Modernization Project - FIS West Art Wall Proposal

*From Bridge to Bridge and Our Life in Between*

Painting Texture	Tile/ Glass Translation
 <ul style="list-style-type: none"><li>black and white abstract geometric line work</li></ul>	

# MUZAE.

SFO Terminal 3 West Modernization Project - FIS West Art Wall Proposal

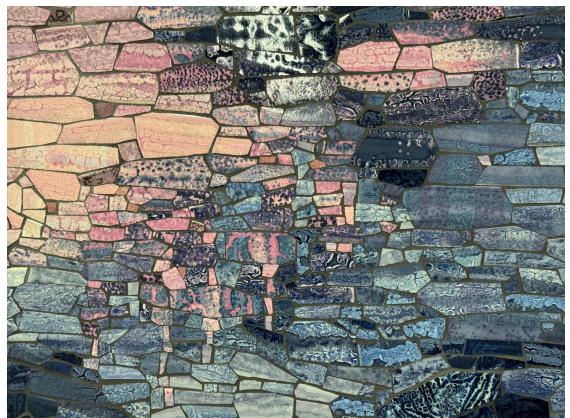
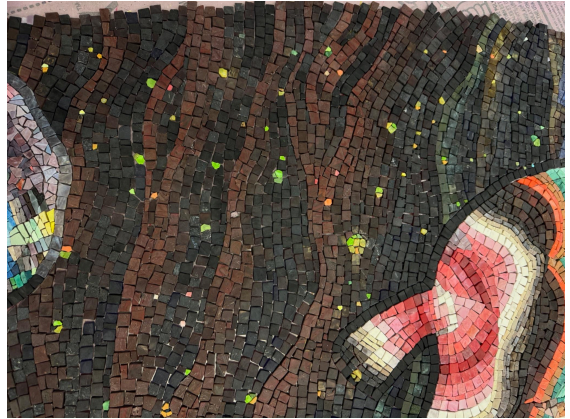
*From Bridge to Bridge and Our Life in Between*

Painting Texture



- soft and fuzzy linework with a glowing underlay effect smokey translucent black over color

Tile/ Glass Translation



# MUZAE.

SFO Terminal 3 West Modernization Project - FIS West Art Wall Proposal

---

*From Bridge to Bridge and Our Life in Between*

## Creative Process:

To ensure a more direct translation to my studio art practice and maintain true painterly qualities, The process of creating *From Bridge to Bridge and Our Life in Between* involves making a 5 to 1 scale physical mock-up as the base painting to work from. For this proposal, over a third (sections 1-3) are designed on top of a finished painting. If selected, I will continue this process and use the finished painting as reference for the mosaic.

