



## CIVIC DESIGN REVIEW – PHASE 3

JUNE 15, 2026

SFFD Division of Training  
**Site Plan**

Hunters Point Ridge

Hunters Point

South Basin

SITE

FORMER CANDLESTICK PARK SITE



Existing Industrial Buildings

Armstrong Avenue



Future Building

Future State Park Development

SECONDARY ENTRY

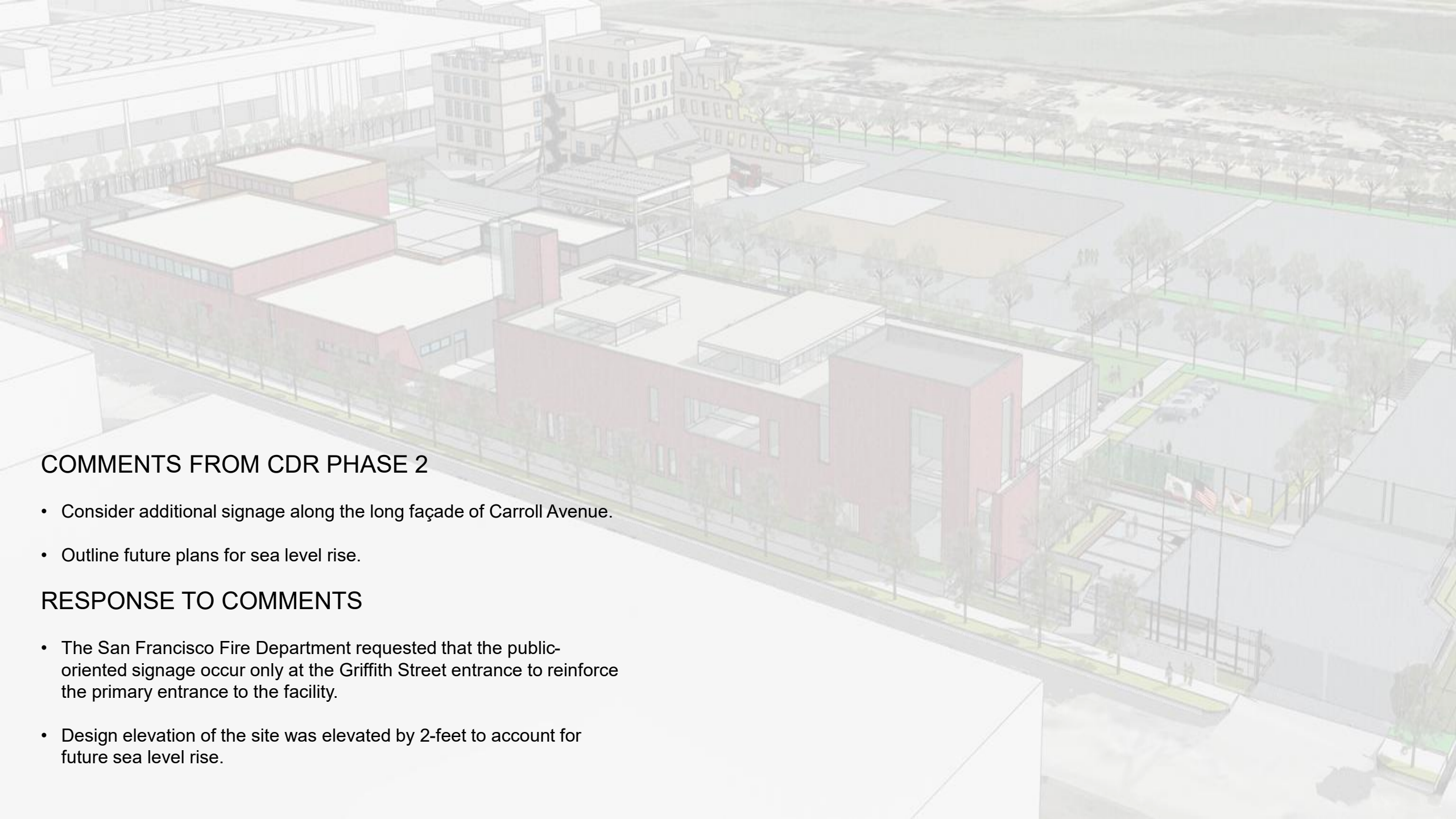
PRIMARY ENTRY

Carroll Avenue

NORTH



Future Buildings



## COMMENTS FROM CDR PHASE 2

- Consider additional signage along the long façade of Carroll Avenue.
- Outline future plans for sea level rise.

## RESPONSE TO COMMENTS

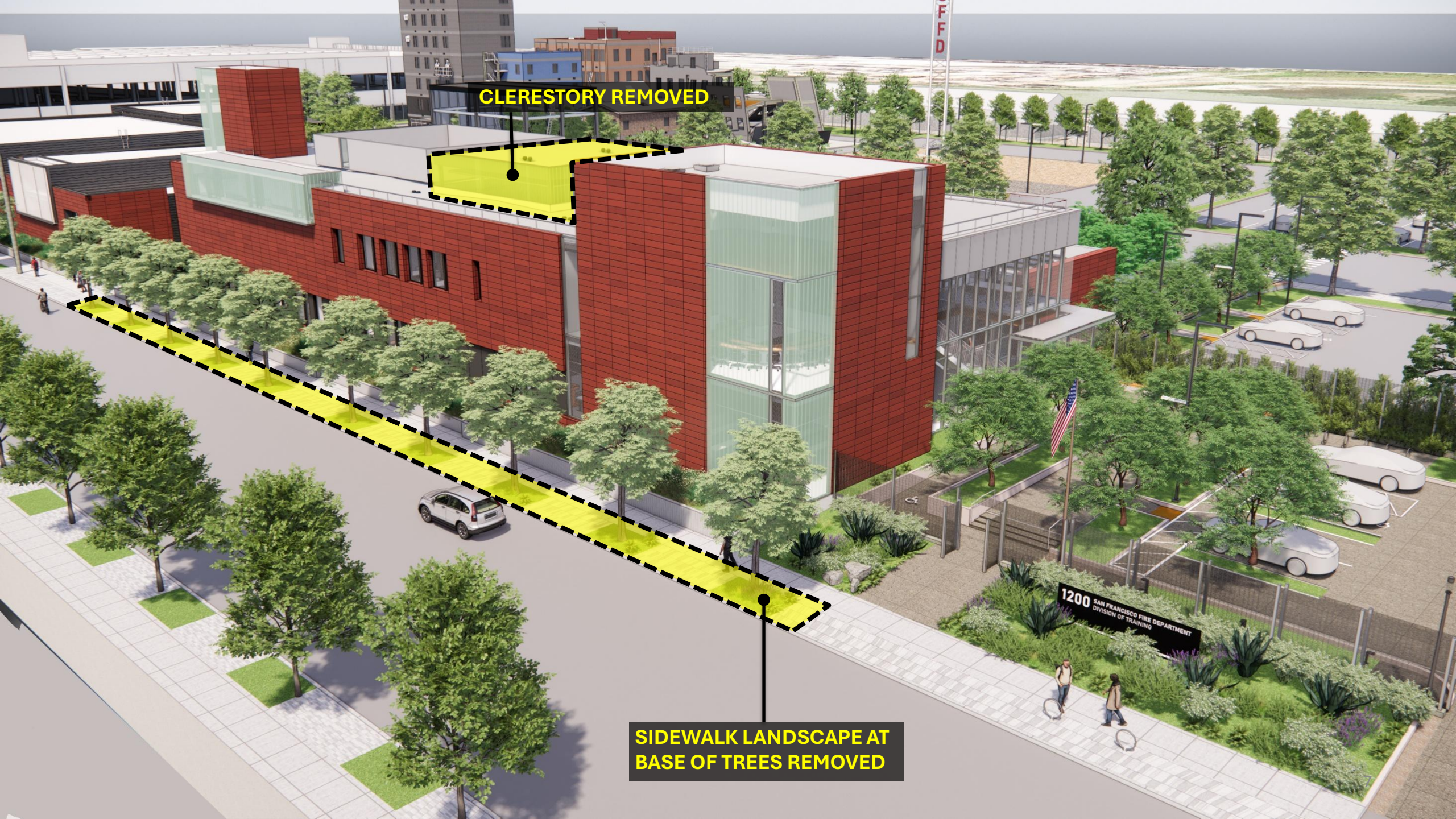
- The San Francisco Fire Department requested that the public-oriented signage occur only at the Griffith Street entrance to reinforce the primary entrance to the facility.
- Design elevation of the site was elevated by 2-feet to account for future sea level rise.

SFFD Division of Training

# **Administration – Classroom Building**

**CLERESTORY REMOVED**

**SIDEWALK LANDSCAPE AT  
BASE OF TREES REMOVED**





1200 SAN FRANCISCO FIRE DEPARTMENT  
DIVISION OF TRAINING

F  
D



**SIDEWALK LANDSCAPE AT BASE OF TREES REMOVED**

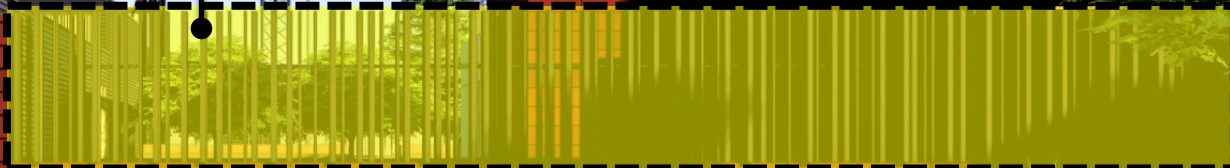
**1200** SAN FRANCISCO FIRE DEPARTMENT  
DIVISION OF TRAINING

**SIDEWALK LANDSCAPE AT BASE OF TREES REMOVED**



SFFD Division of Training  
**Academy Building**

**SIMPLIFIED FENCE**



**SIDEWALK LANDSCAPE AT  
BASE OF TREES REMOVED**





**SIMPLIFIED FENCE & KIOSK**

**SIMPLIFIED FENCE**

**SIDEWALK LANDSCAPE AT  
BASE OF TREES REMOVED**





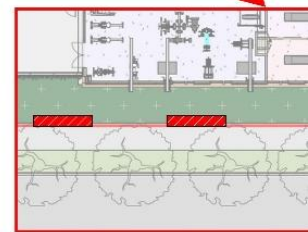
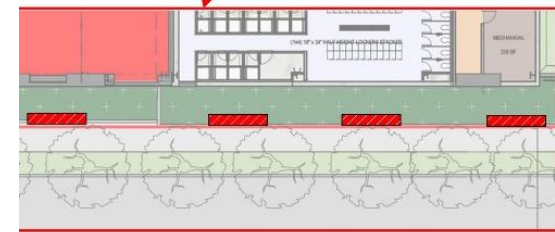
An architectural rendering of a modern building facade. A prominent feature is a bright yellow fence with a kiosk-like structure at the corner, outlined in black. The fence runs along the building, which has a dark, textured upper section and a reddish-brown lower section. In the foreground, a sidewalk with a checkered pattern is bordered by a low, light-colored planter box containing various green plants. A person is walking a dog on the sidewalk. To the right, a road with a white line and a car is visible. The sky is blue with light clouds. A large tree is visible in the background behind the building.

**SIMPLIFIED FENCE & KIOSK**

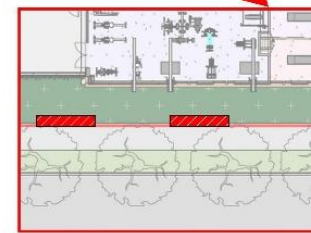
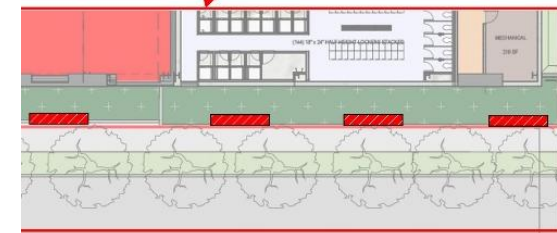
**SIDEWALK LANDSCAPE AT  
BASE OF TREES REMOVED**



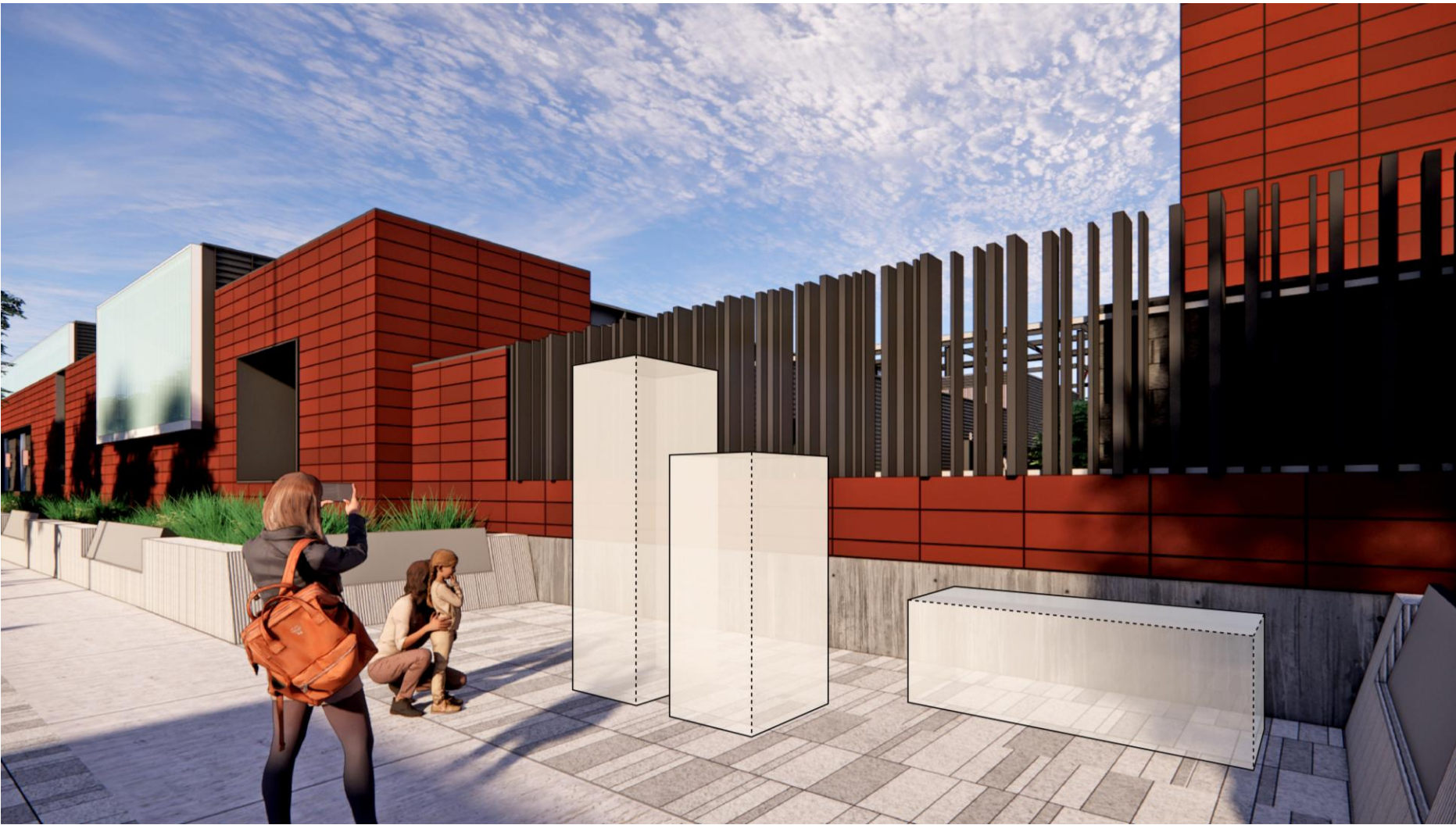
SFFD Division of Training  
**Public Art**



*Retaining Wall*  
PUBLIC ART: LOCATION CONSIDERATIONS

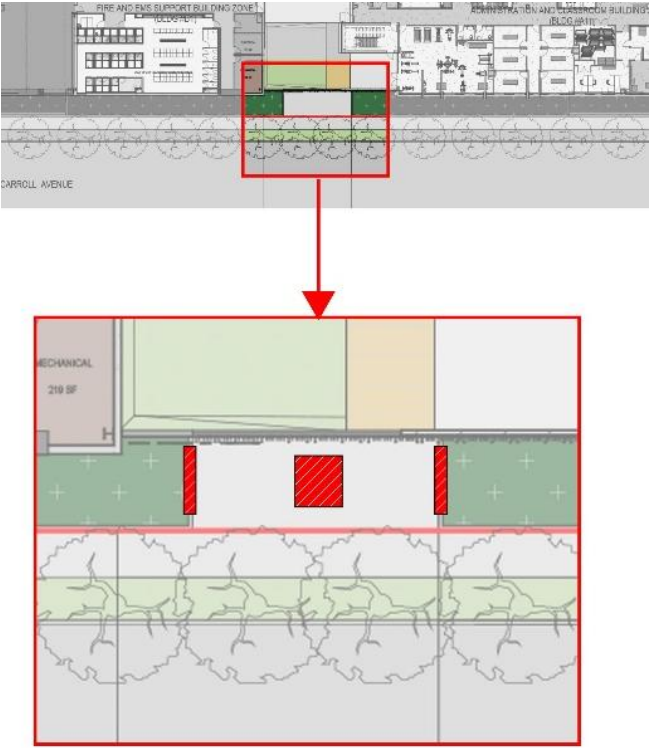


*Retaining Wall*  
PUBLIC ART: LOCATION CONSIDERATIONS



*Center Site*

PUBLIC ART: LOCATION CONSIDERATIONS



*Center Site*  
PUBLIC ART: LOCATION CONSIDERATIONS

SFFD Division of Training  
**END**