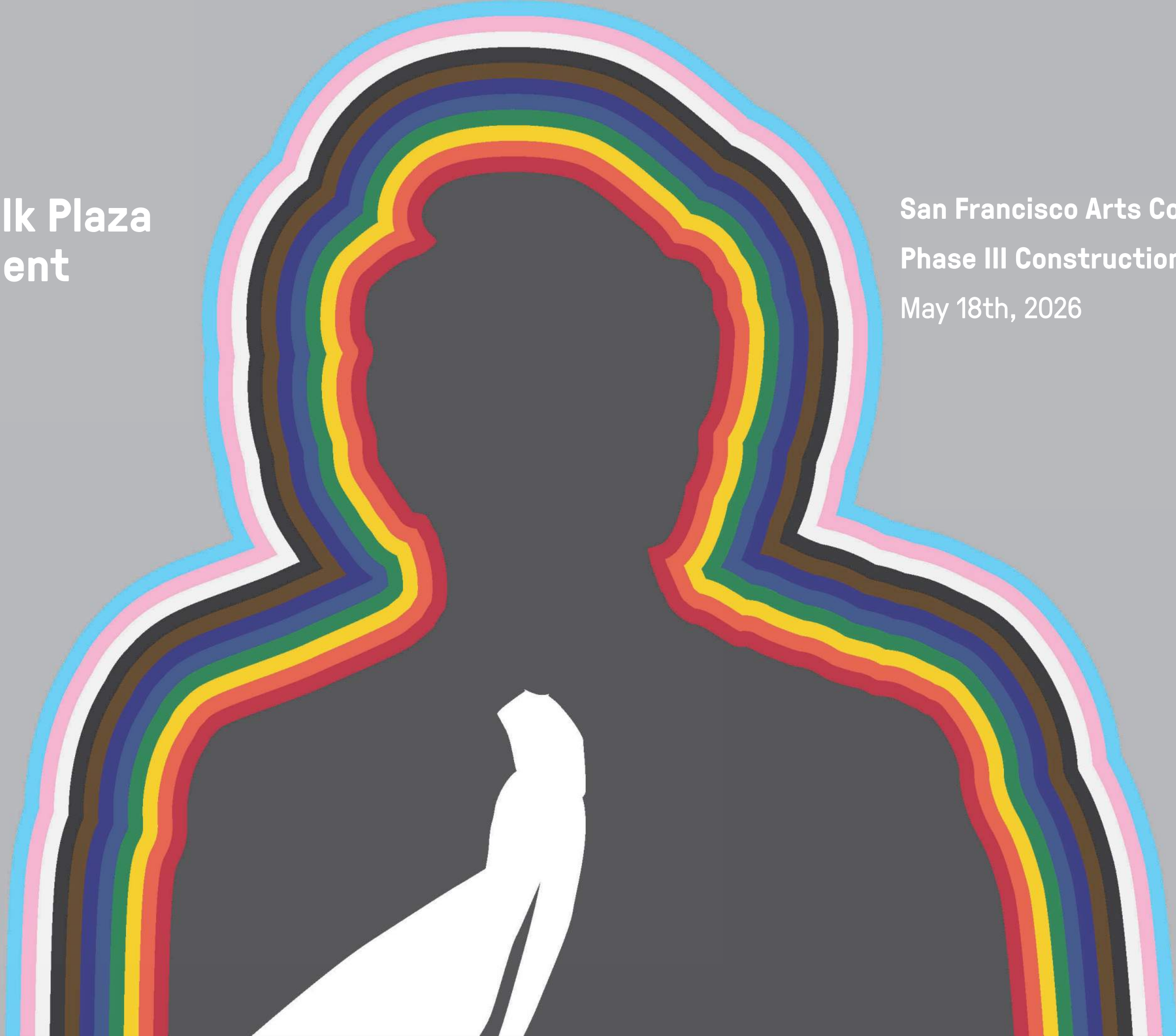


Harvey Milk Plaza Improvement Project

San Francisco Arts Commission
Phase III Construction Documents
May 18th, 2026



MARJANG

swa
San Francisco

Existing Site Conditions



NEIGHBORHOOD

URBAN



For Reference: Previously Approved SFMTA Elevator Project



Approved Phase II Plan



Site Plan: Plaza Level

- 1. "PEDESTAL" SCULPTURE
- 2. EXPANDED PLAZA WITH EMBEDDED LIGHTING
- 3. "BULLHORN" CANOPY OVER STAIRS + ESCALATOR
- 4. HISTORICAL BUILDING
- 5. EXISTING CONCRETE RETAINING WALL
- 6. RELOCATED PATH OF GOLD LIGHT STANDARD
- 7. "BEACON" SFMTA ELEVATOR
- 8. EXISTING FLAGPOLE
- 9. CENTRAL TERRACE WITH "OCULUS" SKYLIGHT TO BELOW
- 10. EXISTING GATE AT CASTRO COMMONS CONDOS
- 11. MEMORIAL GROVE
- 12. LIGHTING ON EXISTING UTILITY POLE



Commissioners Comments 9.20.2021

1. Commissioners asked the team to revisit the typography being used throughout the site to be more consistent and to consider how to integrate messages visually
2. Commissioners also asked about the elevator beacon and whether or not there were too many visual elements at play and warned that they steer away from it being too cacophonous and losing focus or intent
3. Commissioners asked the team to consider how to deal with skateboards and maintenance at the site.
4. Commissioners asked SFAC staff to address how art will be addressed at the site
5. Concerns around the programming aspect of the gallery at the concourse level and the elevator as presented

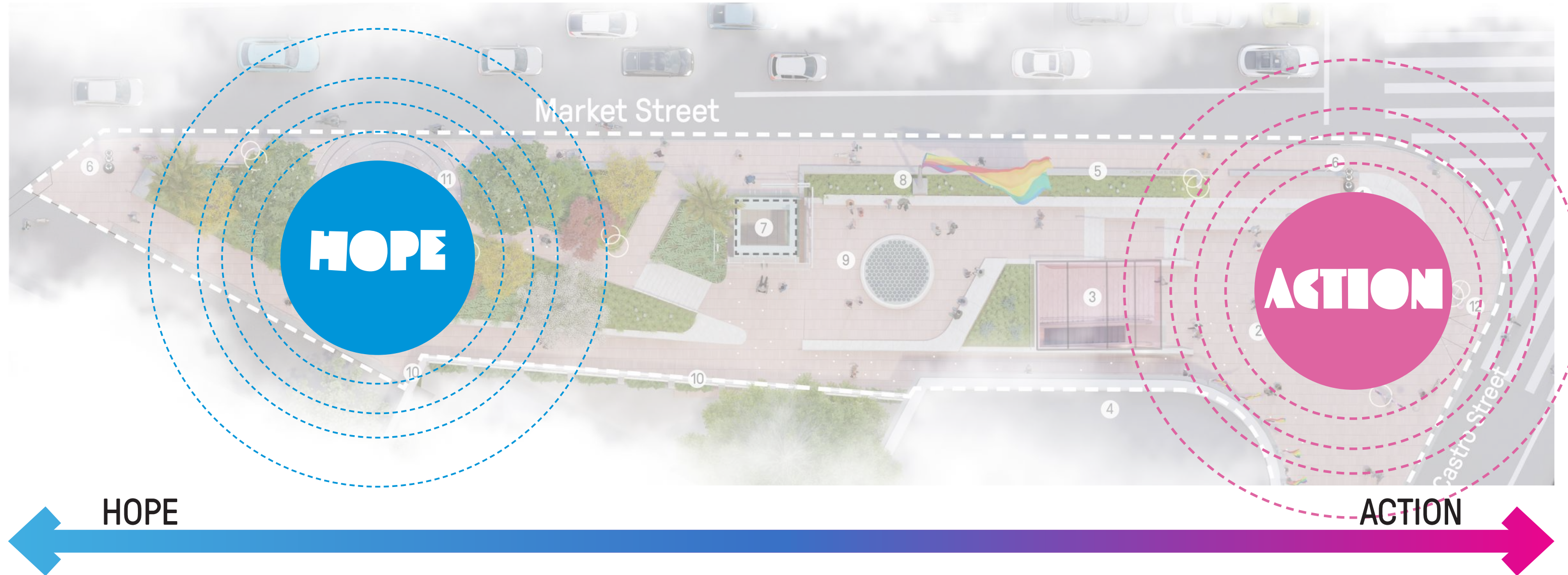
What has Changed:

- Transition from emerging city project to official city project.
- Project has been fully funded as part of the passage of Bond Measure B in 2024.
- Gilbert Baker Flag Designated as City Landmark
- Design Updates
 - a. Stair Alignments
 - b. Oculus Material
 - c. Canopy Development
 - d. Plaza Lighting
 - e. Interior development (Added Bench)
 - f. Public Art location & Scope finalized with SFAC



Memorial Concept

“The only recognizable feature of hope is action.”
- Grace Paley



Hope & Action:

“You gotta give ‘em hope” are the words many come to associate with Harvey Milk today. Inspired by a conversation with Harvey’s friend and photographer Danny Nicoletta, the design team felt that the memorial could not focus on hope alone, but that in order to properly memorialize Harvey, action had to be properly represented on the site. Balancing the two unlike ends of the space, hope lives at the quieter end near Collingwood and manifests in a reflective grove. Action takes place at the corner of Castro and Market where the urban energy of the site converges. The concept of the memorial is focused on reflecting the needs of the community, at times we may come to the site in search of hope, and during others we may be drawn to Harvey Milk Plaza inspired by the need for action.

Site Plan: Plaza Level

WEST PLAZA

EAST PLAZA



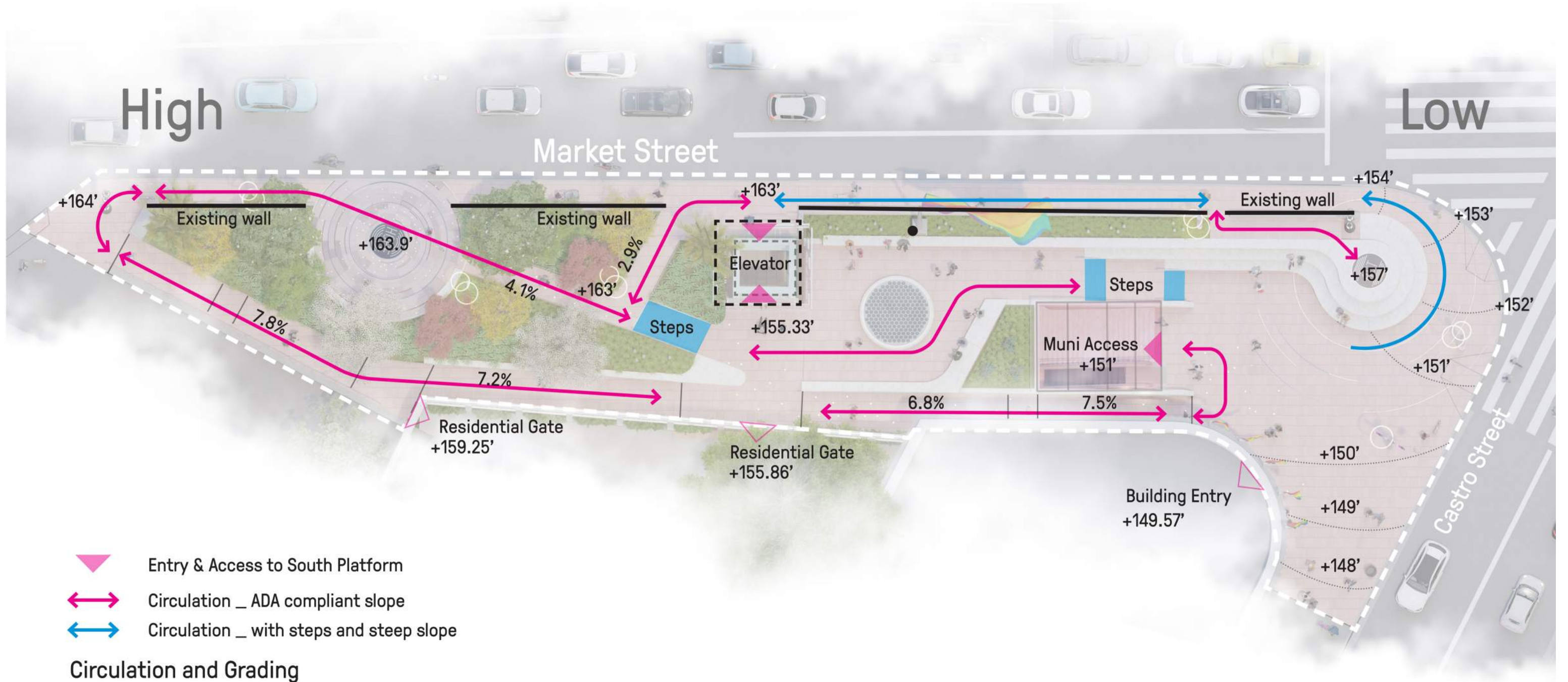
Site Plan: Plaza Level

- | | |
|--|--|
| 1. "PEDESTAL" SCULPTURE | 7. "BEACON" SFMTA ELEVATOR |
| 2. EXPANDED PLAZA WITH EMBEDDED LIGHTING | 8. EXISTING FLAGPOLE |
| 3. "BULLHORN" CANOPY OVER STAIRS + ESCALATOR | 9. CENTRAL TERRACE WITH "OCULUS" SKYLIGHT |
| 4. HISTORICAL BUILDING | 10. EXISTING GATE AT CASTRO COMMONS CONDOS |
| 5. EXISTING CONCRETE RETAINING WALL | 11. MEMORIAL GROVE |
| 6. RELOCATED PATH OF GOLD LIGHT STANDARD | 12. LIGHTING ON EXISTING UTILITY POLE |



0' 5' 15' 35'

Site Circulation & Grading





EXISTING
FLAGPOLE

GROVE

BEACON +
ELEVATOR

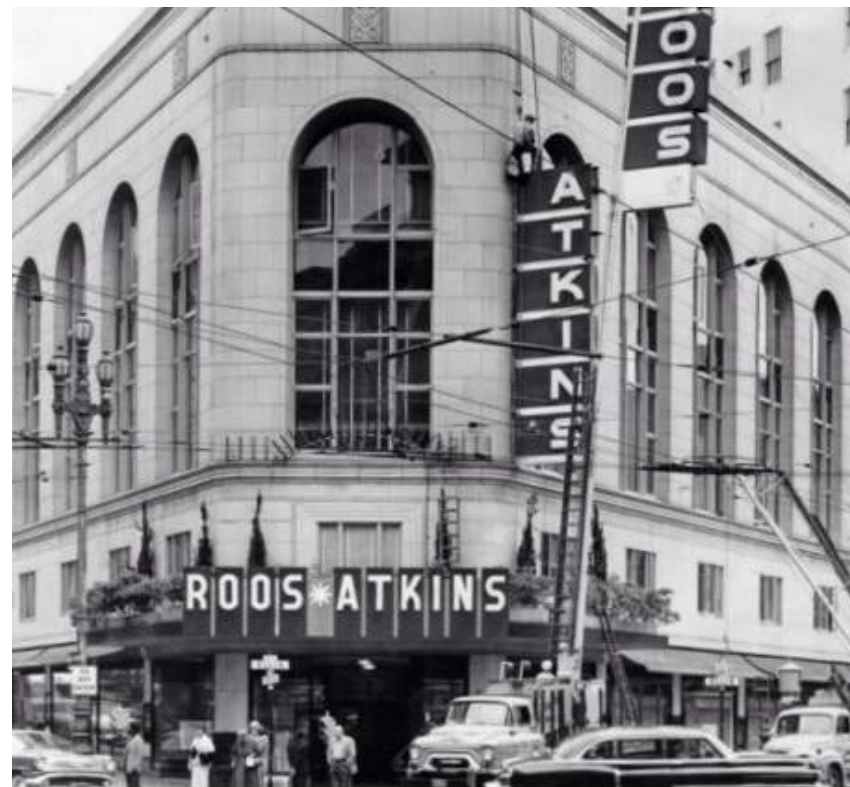
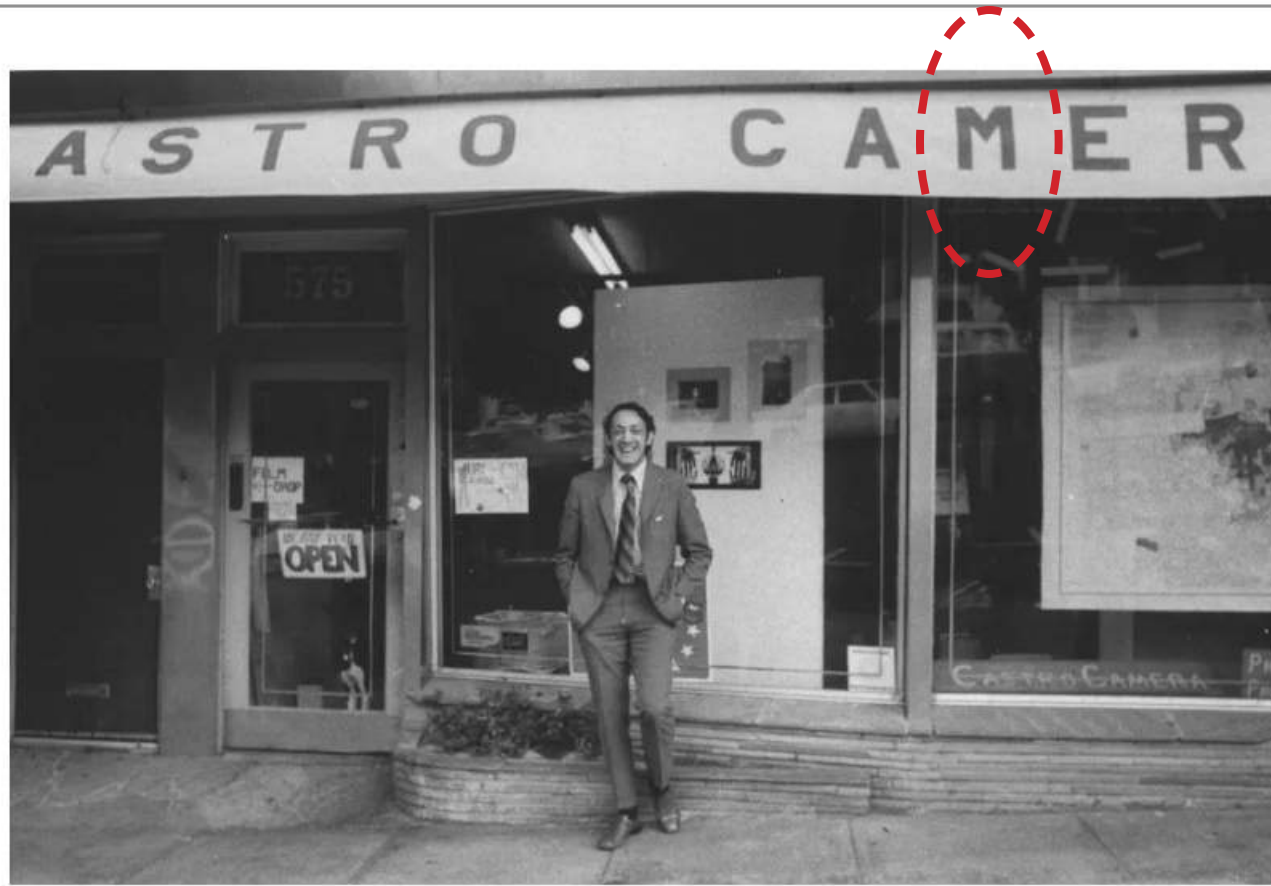
OCULUS
SKYLIGHT

BULLHORN CANOPY OVER
STAIRS + ESCALATOR

PEDESTAL
SCULPTURE

EXPANDED
PLAZA

HISTORIC
BUILDING



ABCDEFGHIJKLMNOPQRSTUVWXYZ

ABCDEFGHIJKLMN
OPQRSTUVWXYZ

ABCDEFGHIJ
KLMNOPQR
STUVWXYZ

**I AM TIRED OF
THE CONSPIRACY
OF SILENCE.**

**THE IMPORTANT THING IS NOT THAT WE
CAN LIVE ON HOPE ALONE, BUT THAT LIFE
IS NOT WORTH LIVING WITHOUT IT.**

I AM TIRED OF THE CONSPIRACY OF SILENCE.

**GIVE ME YOUR SUPPORT, AND I'LL FIGHT FOR YOU...
I'LL FIGHT FOR YOU BECAUSE I AM YOU.**

WHEN ARE WE GOING TO FIGHT BACK

I AM TIRED OF THE CONSPIRACY OF SILENCE.

GIVE ME YOUR SUPPORT, AND I'LL FIGHT FOR YOU... I'LL FIGHT FOR YOU BECAUSE I AM YOU.

WHEN ARE WE GOING TO FIGHT BACK

IF I DO A GOOD JOB, PEOPLE WON'T CARE IF I AM GREEN OR HAVE THREE HEADS.

I ASK FOR THE MOVEMENT TO CONTINUE

THIS IS A WALK THAT WILL GIVE TO MANY PEOPLE HOPE.

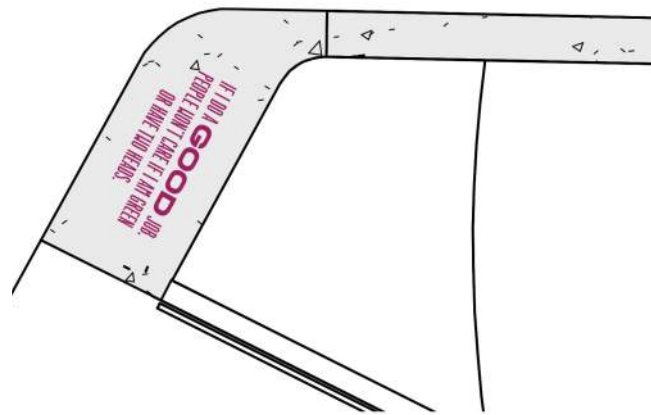
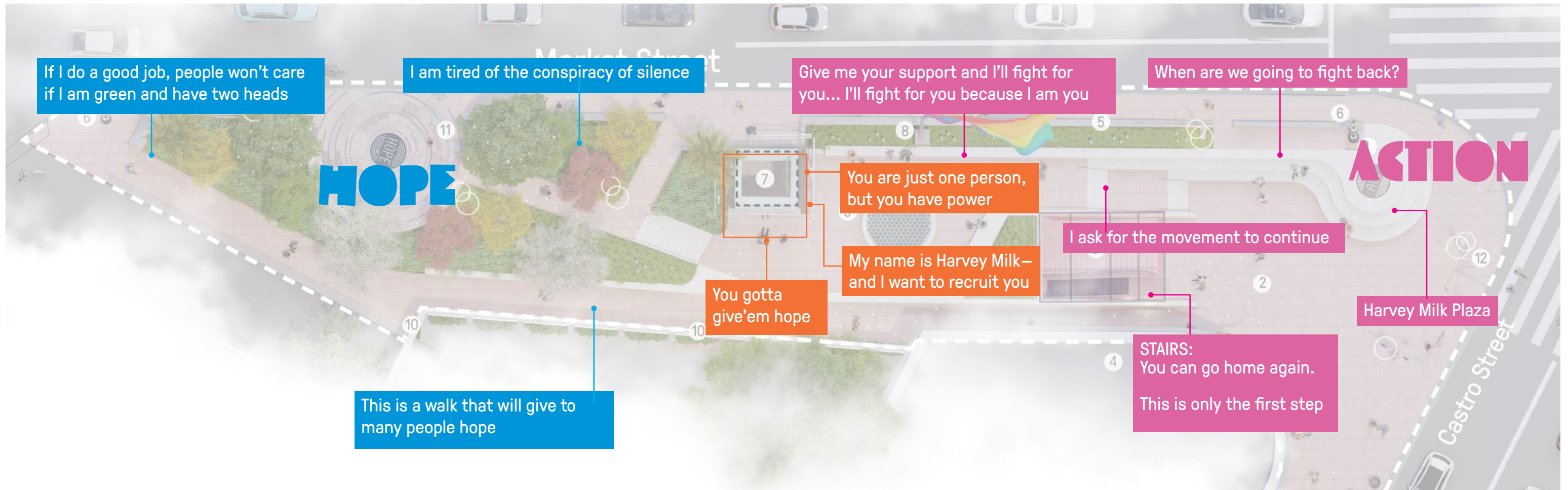
YOU'RE NEVER GIVEN POWER. YOU HAVE TO TAKE IT."

1 IF I DO A **GOOD** JOB, PEOPLE WON'T CARE IF I AM GREEN OR HAVE TWO HEADS.
2 IT'S NOT MY **VICTORY**, IT'S YOURS AND YOURS AND **YOURS**.
3 I AM **TIRED** OF THE CONSPIRACY OF **SILENCE**.
4 GIVE ME YOUR **SUPPORT** AND I'LL FIGHT FOR YOU...I'LL FIGHT FOR YOU BECAUSE I AM **YOU**.
5 WHEN ARE **WE** GOING TO **FIGHT** BACK
6 I ASK FOR THE **MOVEMENT** TO **CONTINUE**.
7 **HARVEY MILK** PLAZA
8 THIS IS A WALK THAT WILL **GIVE** TO MANY PEOPLE **HOPE**.
9 THIS IS ONLY THE **FIRST** STEP. YOU CAN GO **HOME** AGAIN.

6 INCH
LETTER
HEIGHT

4 INCH
LETTER
HEIGHT

Harvey's Words: Quote Location Map

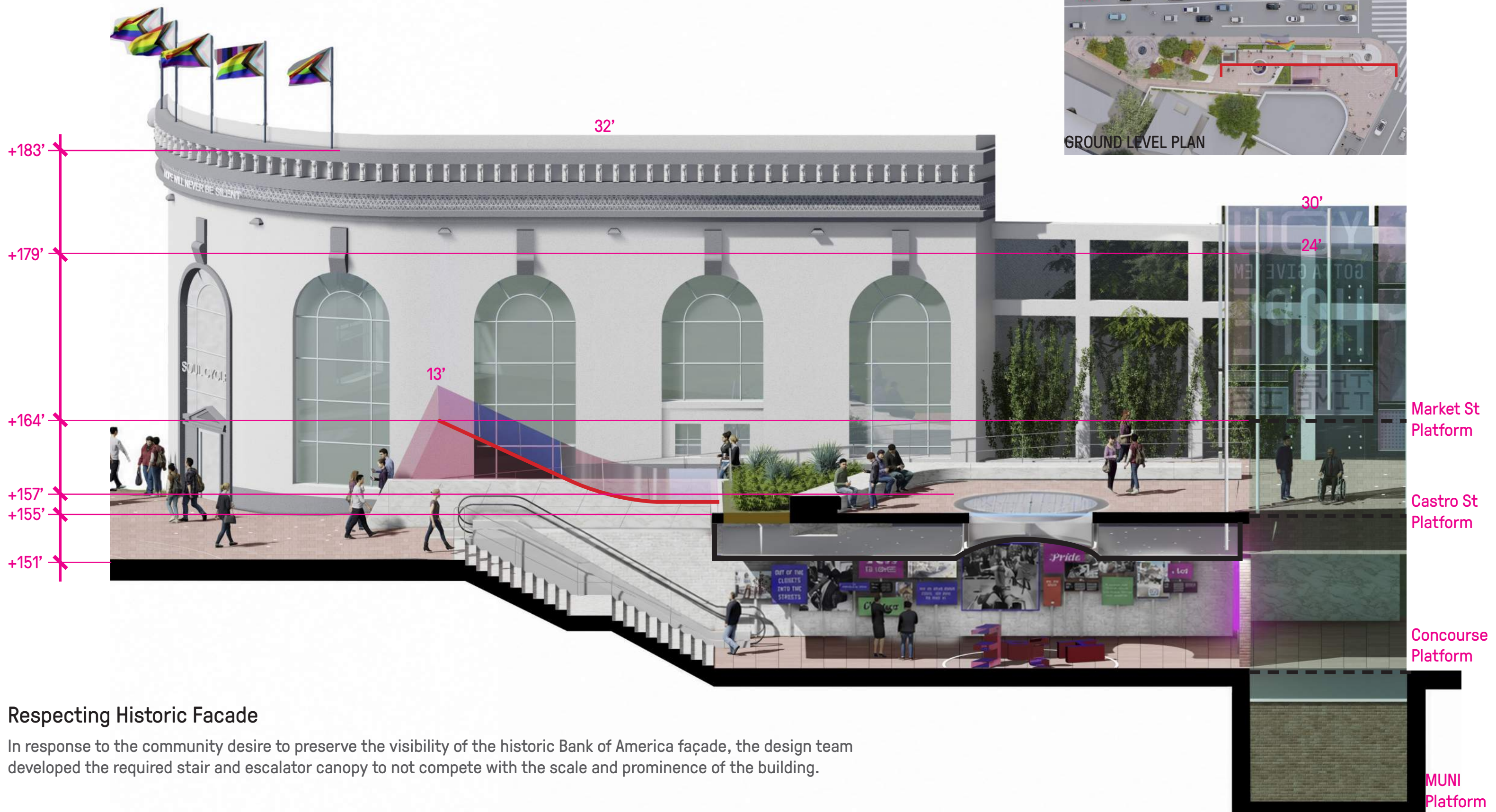


12" 7" GIVE ME YOUR SUPPORT AND I'LL FIGHT FO

12" 7" WHEN ARE WE GOING TO FIGHT BACK?

Inset Stainless Letters

Plaza Section



Respecting Historic Facade

In response to the community desire to preserve the visibility of the historic Bank of America façade, the design team developed the required stair and escalator canopy to not compete with the scale and prominence of the building.

Eastern Plaza: Bullhorn Canopy

Materiality

Canopy Glass
Point Supported/
Structural Glass
Rose Film



Railings and Structure
Brushed Stainless
Size Varies



Security Gates
Fancy Fence



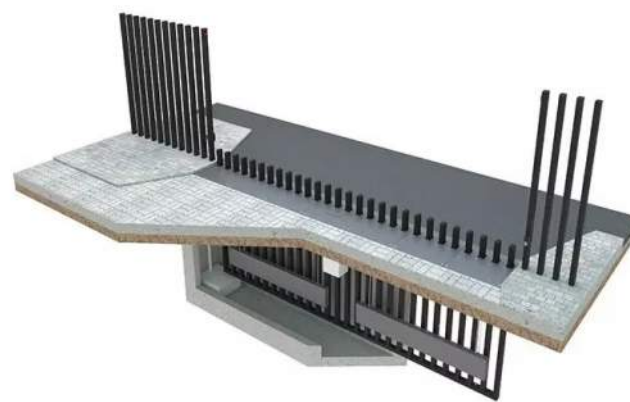
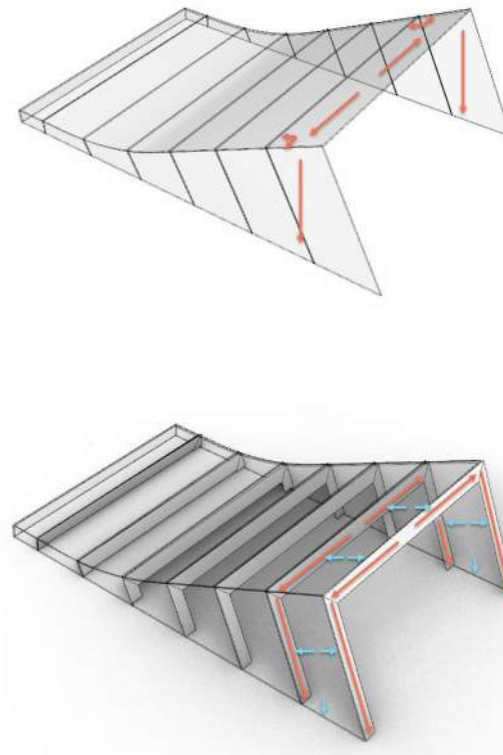
Bullhorn Canopy

In compliance with current code, the station stairs and an escalator are covered by a canopy that is securable. The canopy overhead serves a functional purpose and its form is a subtle nod to the shape of Harvey's famous bullhorn. The tinted Rose glass give the canopy more character while keeping it low and transparent to not obstruct the historic Bank of America (Currently Soulcycle) building facade.

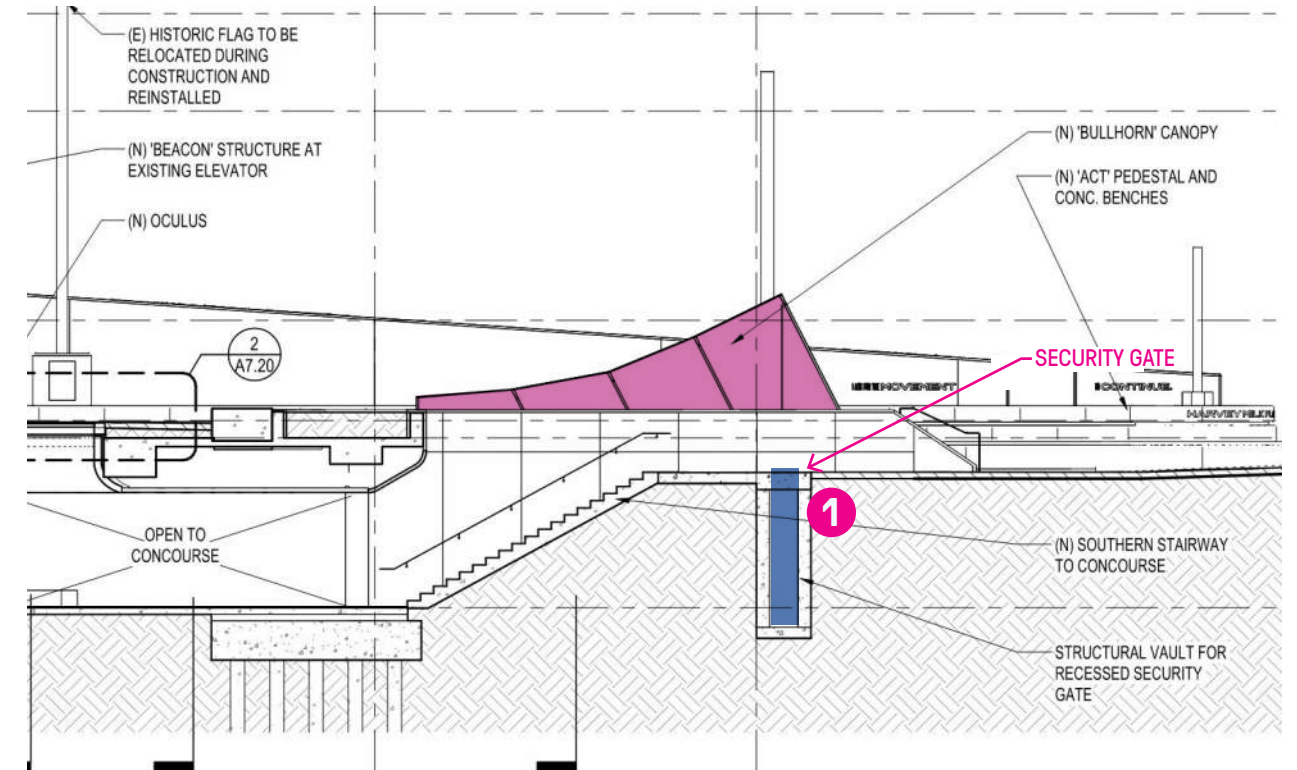


Harvey Milk and his bullhorn (1977)

Structural Glass Systems



Security Gates
Fancy Fence



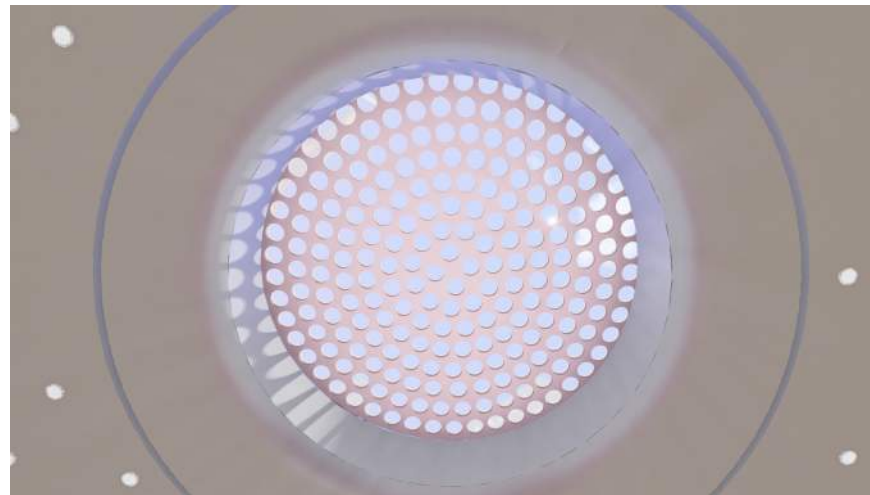
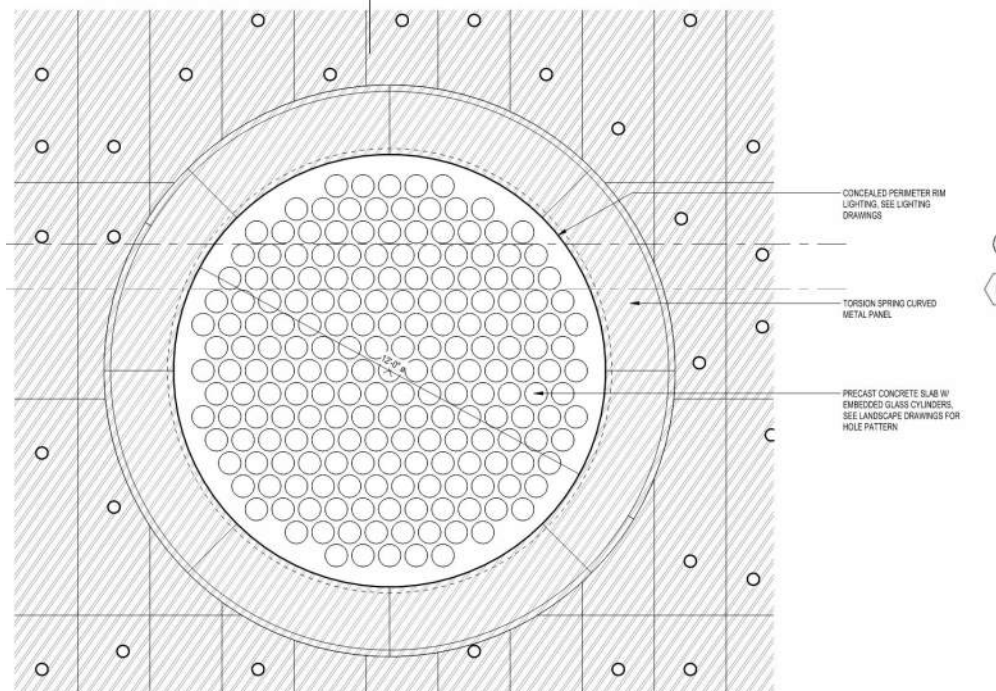
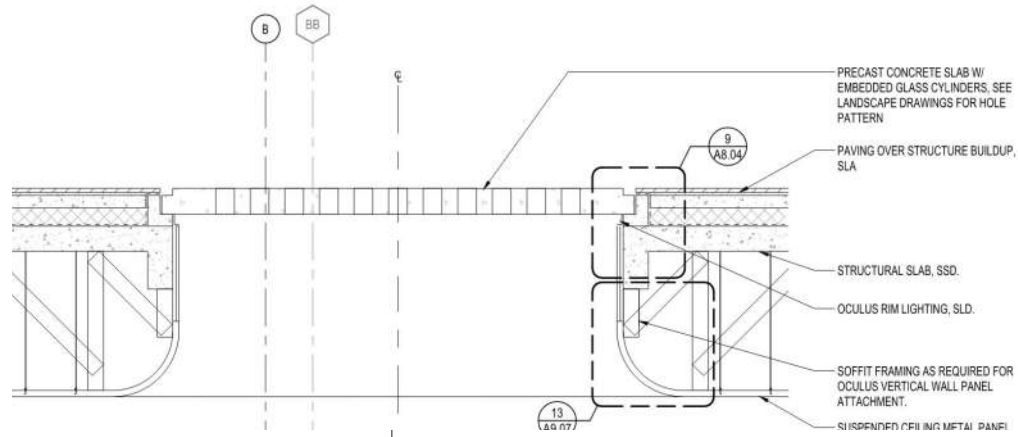
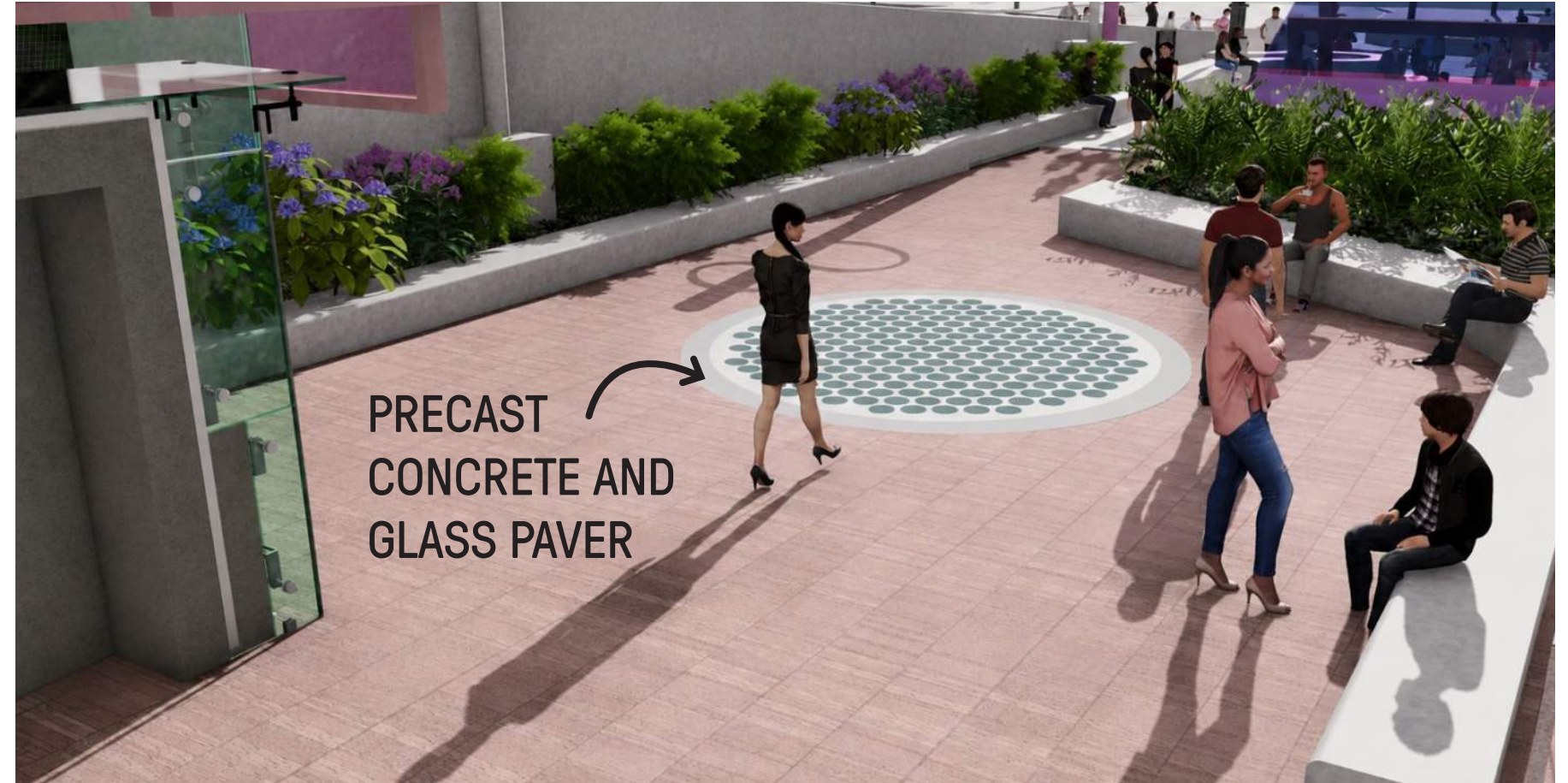
Eastern Plaza: Oculus

Materiality

Seatwalls
"Sierra White"
Size Varies



Structural Glass
Skylight



Oculus:

In addition to the expanded open plaza on the corner, the design creates a secondary gathering place at the base of the existing rainbow flag and the new beacon. Inspired by a camera lens, the oculus in the center of the terrace allows light into the station below and creates a visual connection between the plaza and concourse levels.

Eastern Plaza: Beacon

Materiality

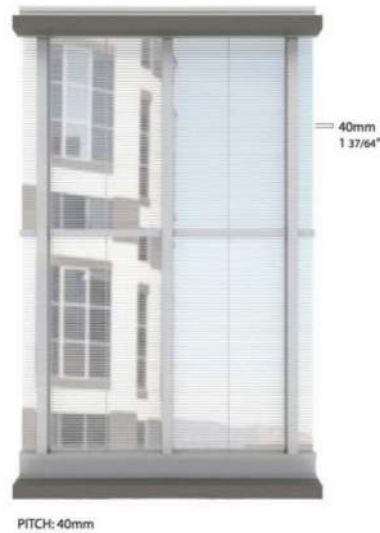
Granite Paving
“Radiant Red”
*See pattern detail



Dichroic Glass
Cool Film by 3M
*See Elevation



Transparent Digital
Art Screen
*See Reference



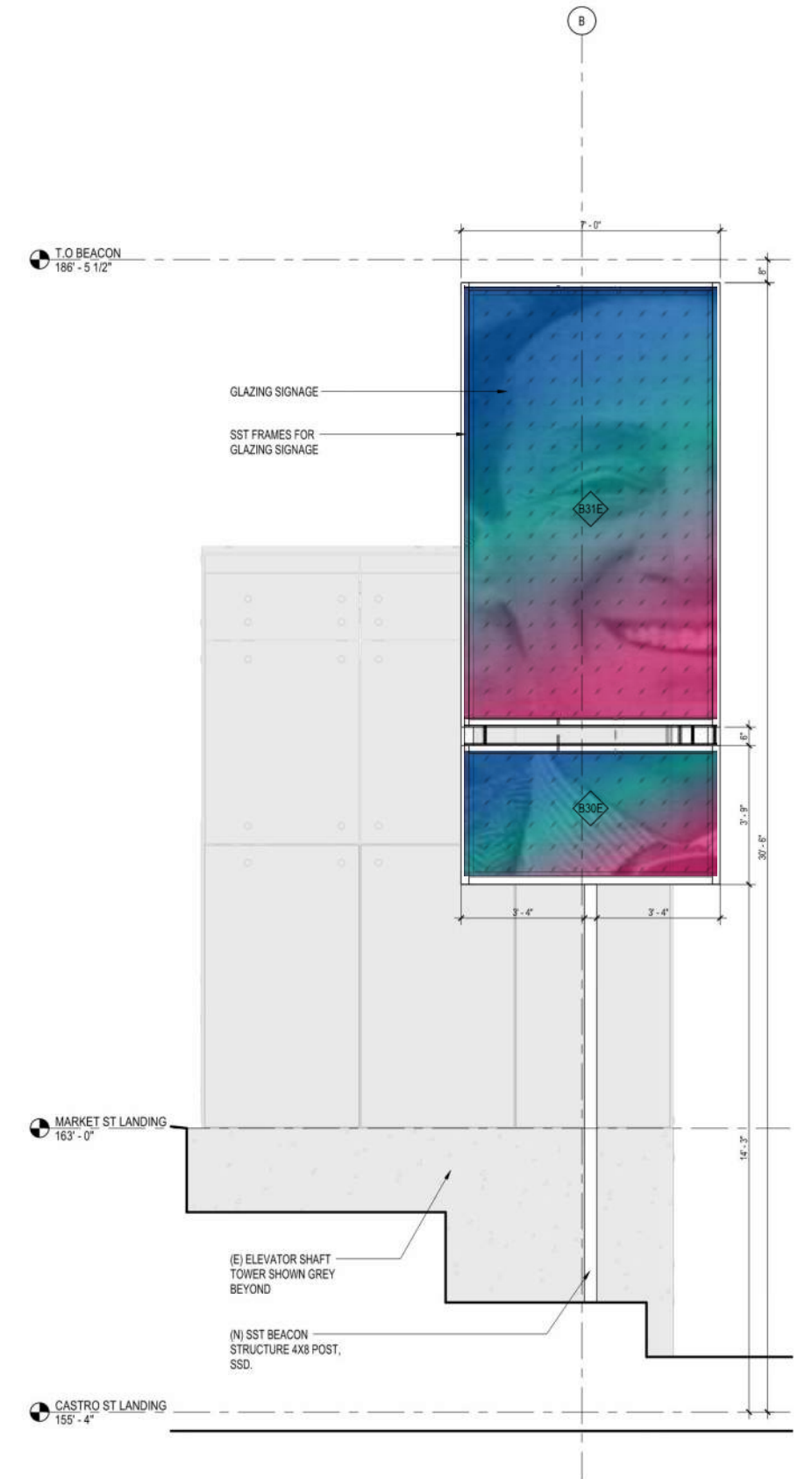
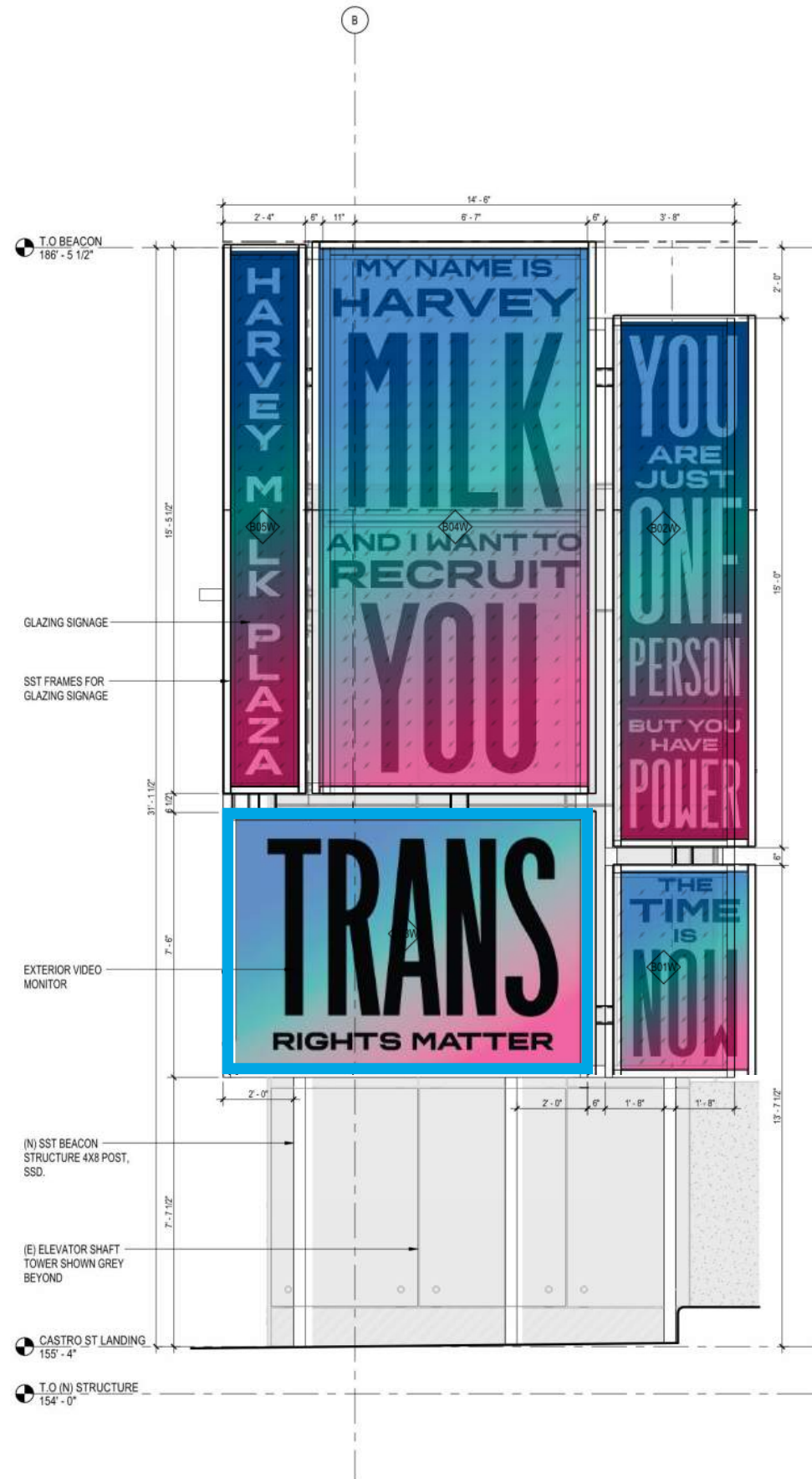
Beacon:

The form of the Beacon is inspired by the protest signs social justice movements have been using for decades – the same ones that littered Harvey’s Camera Shop, and we continue to see on the streets of San Francisco. This modular element is composed of several digital panels, some with dynamic displays that spotlight current inspirational messages of protest and celebration, and, when needed, of consolation.

A symbol of hope and progress, The Beacon’s flexibility will allow it to celebrate current and ongoing events and activism while reminding visitors of the work that has been undertaken previously in advancing the rights of all individuals.



Beacon Elevations



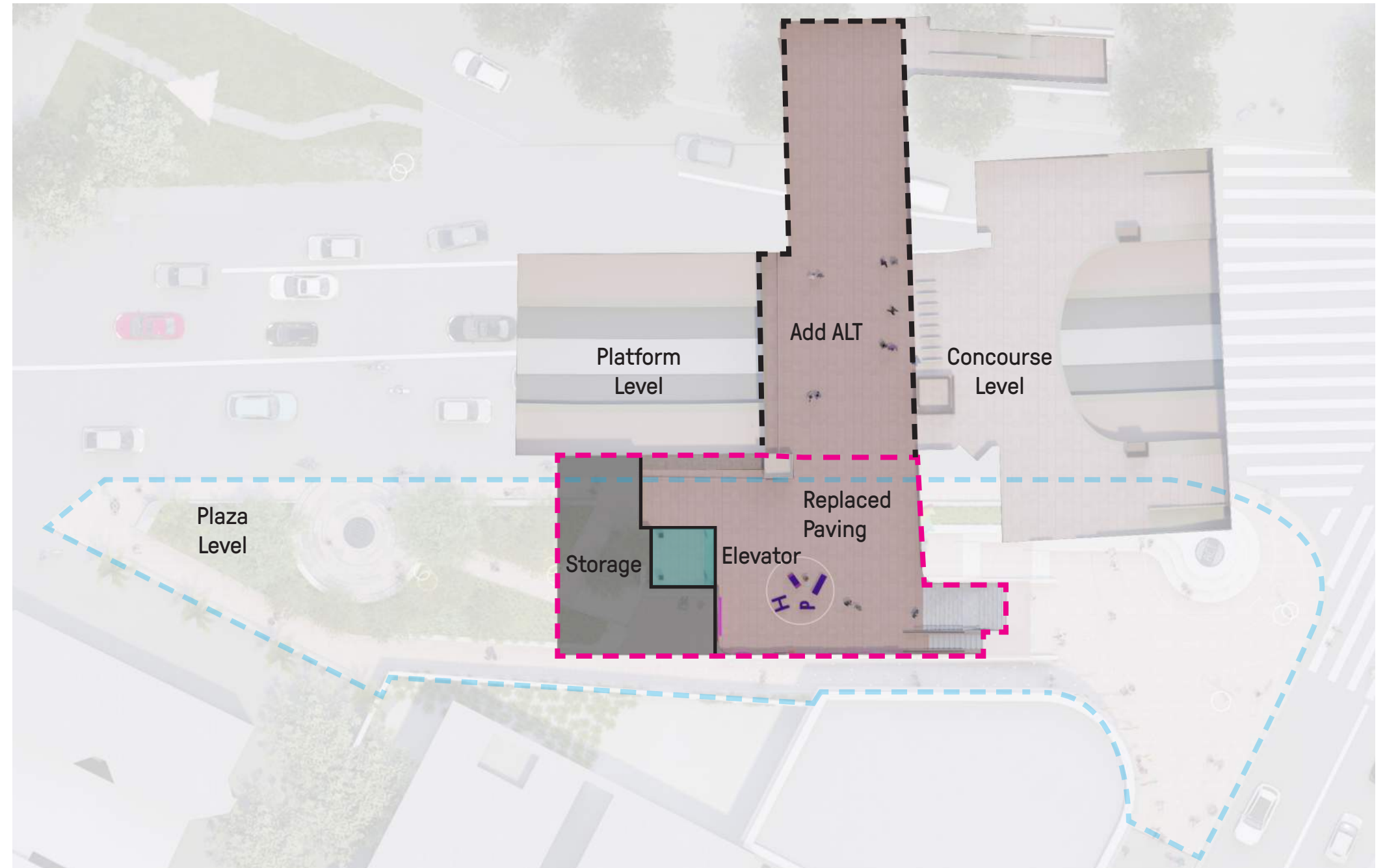
Site Plan: Concourse Level

Materiality

Granite Paving
 "Radiant Red"
 *See pattern detail

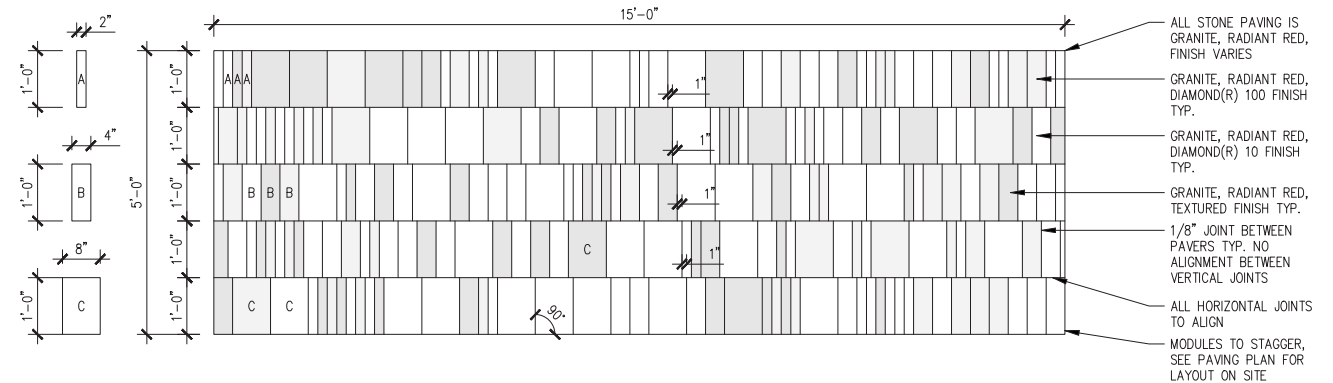


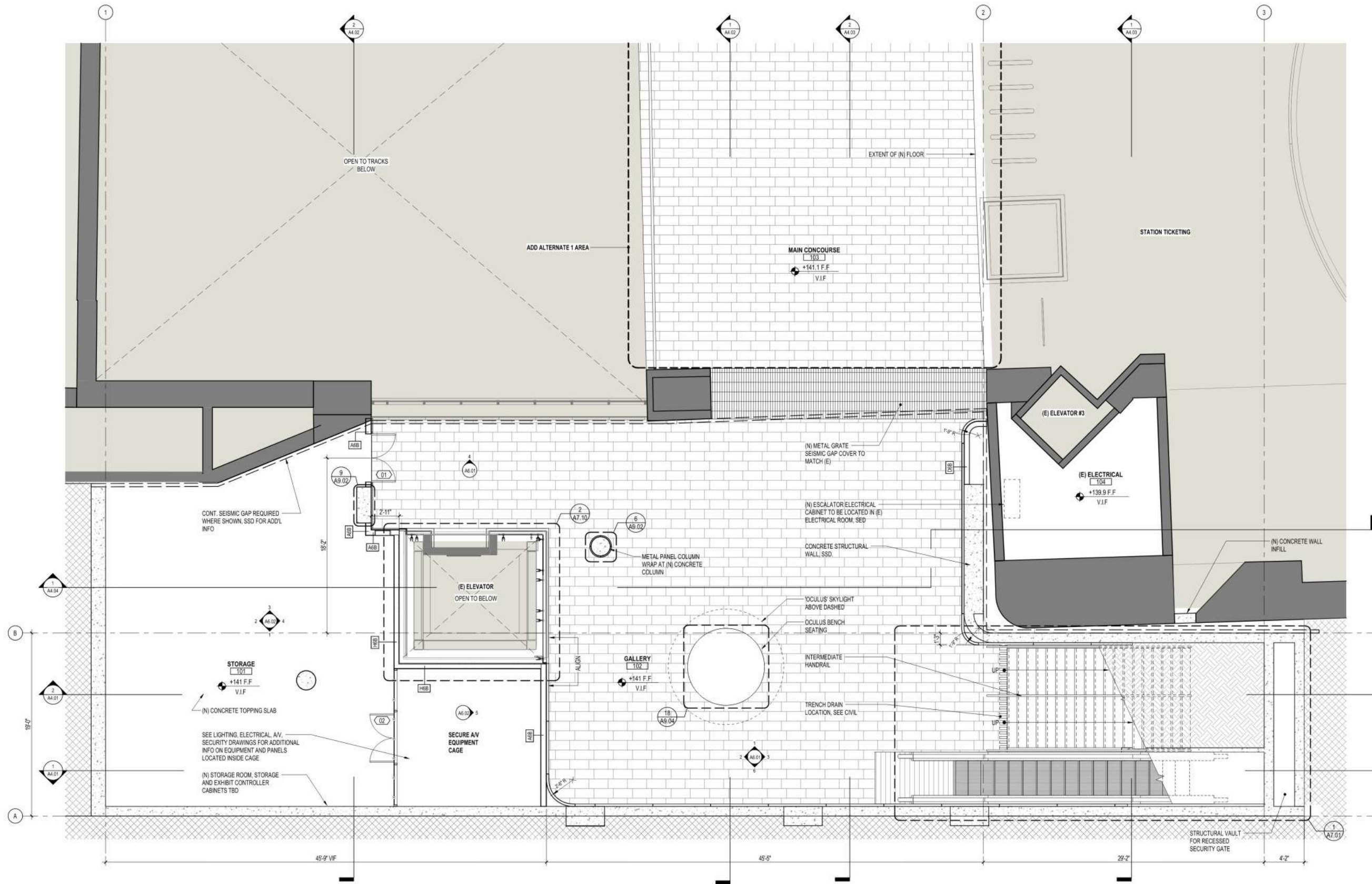
Wall Cladding
 "Sierra White"
 Granite
 Size Varies



PAVER SIZES

PAVING MODULE





1 ENLARGED FLOOR PLAN - CONCOURSE (A)
1/4" = 1'-0"

XXXX



Concourse Level - South Entrance Arrival



Concourse Level - South Entrance looking East - SFAC Public Art Location



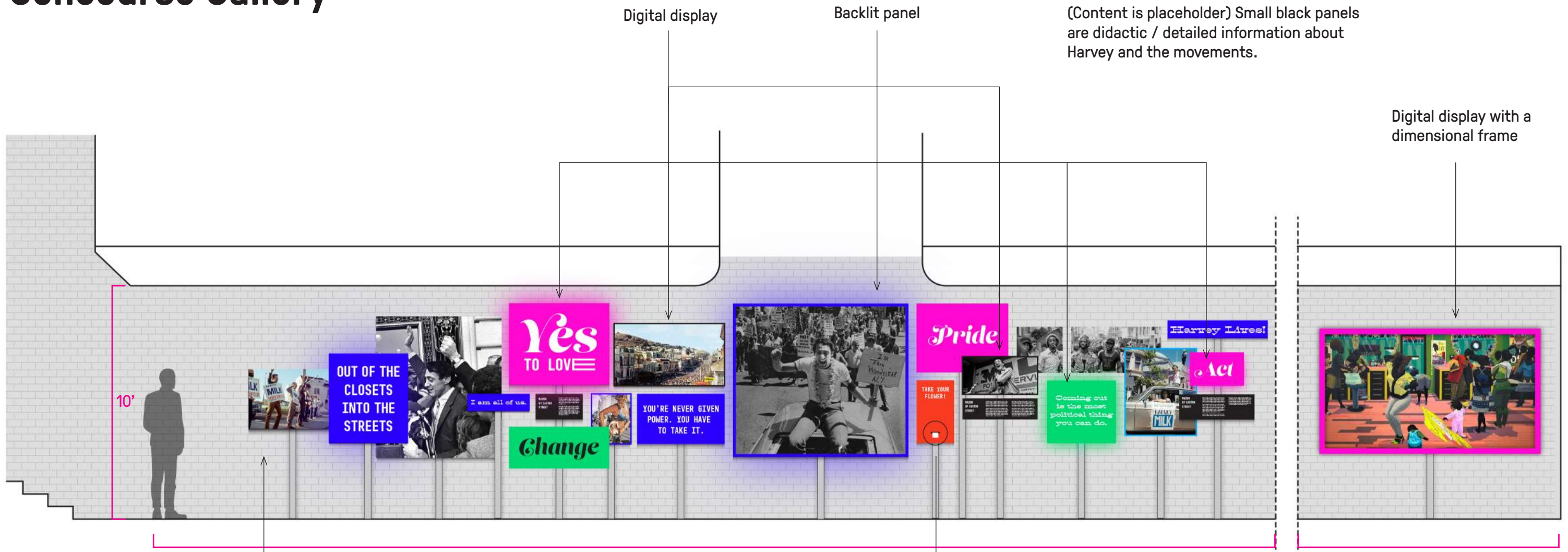
The Gallery (Voices of the Community):

This indoor space, partially inside Castro Muni Station, will provide flexible gallery space for art and exhibits that reflect the current conversation and priorities of the community around issues of representation and social justice. A more permanent art piece is located directly below the skylight and is envisioned to have an audio component that would envelop the viewer in the sound of both Harvey's voice and the voices of the community that continue to echo his message.



Concourse Level - South Entrance looking North to Add Alternate Area

Concourse Gallery



Digital display

Backlit panel

(Content is placeholder) Small black panels are didactic / detailed information about Harvey and the movements.

Digital display with a dimensional frame

Scale= 1/4" = 1'

Wall A
45'

Corner

Wall B
14'6"

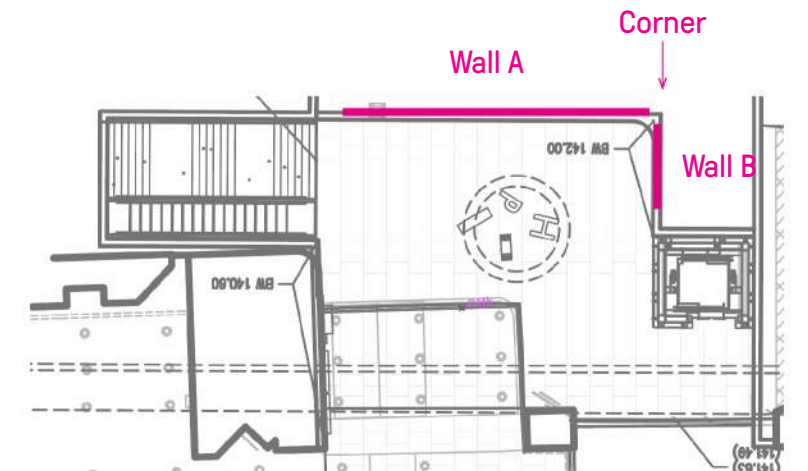
Panels mounted on brushed stainless posts. Posts are attached to wall; boards float as required for overlapping



Front:
Illustrated flowers by curated artists



Back:
A random act of kindness



Content Walls:

The content of the walls is envisioned as a celebration of the history of activism in San Francisco. Activism has played such a large role in our community and city, in this space the history of action will be celebrated

Lighting:



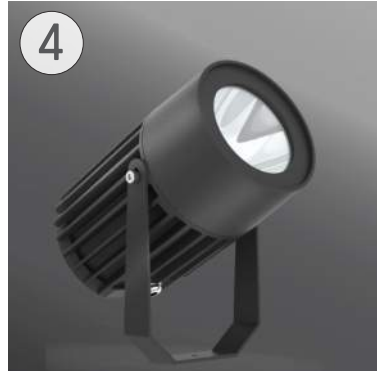
1
Luminii Kurba “Horizontal Light”
Recessed wall toe lighting.



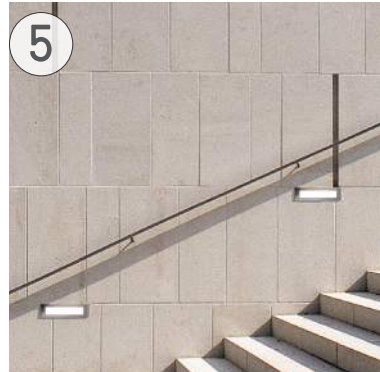
2
Landscape Forms: “Typology Ring”
Overhead light fixtures.



3
Design Plan “Goccia 2.7”
Path of Light in ground lighting.



4
Ligman Lighting “Odessa 2”
Existing Pride Flag uplight.



5
Bega Lighting “Luminaire: 22 132”
Staircase lighting.



Lighting:

On the night of November 27, 1978, the community gathered at the corner of Castro and Market to reflect on the assassination of Harvey Milk earlier in the day. Many expected there to be violence, instead the community walked in vigil from this corner to San Francisco City Hall, an event that would later be known as the Candlelight vigil. These were the first steps the community took without their leader. Arriving at City Hall the crowd was greeted by future supervisor Harry Brit who told the crowd one day there would be something special in San Francisco, and it would have Harvey’s name on it. The lighting in the paving play homage to this event celebrating the community coming together and tying the site together between hope and action.

East Plaza: Lighting



1
Luminii Kurba "Horizontal Light"
Recessed wall toe lighting.



2
Landscape Forms: "Typology Ring"
Overhead light fixtures.



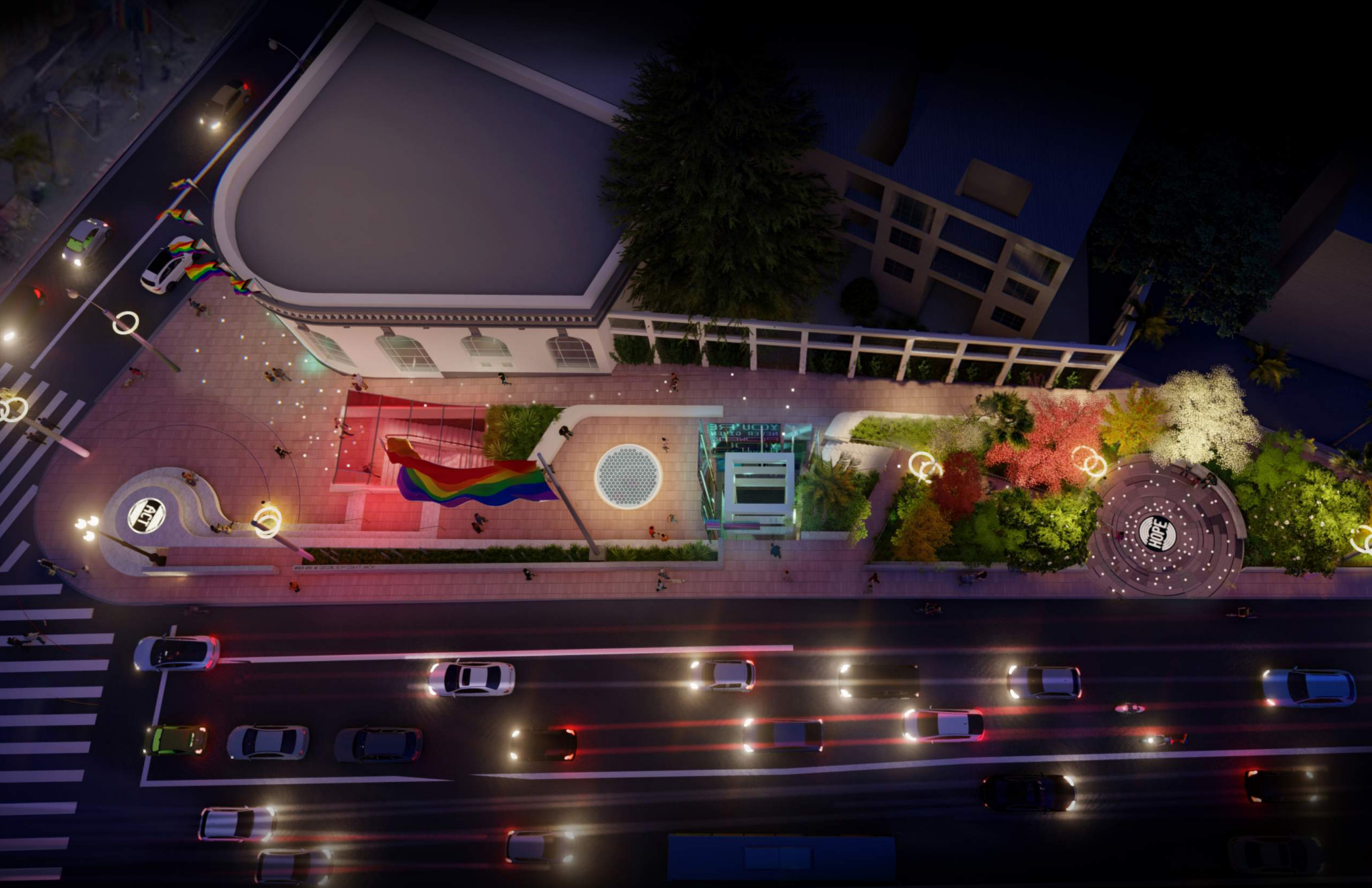
3
Design Plan "Goccia 2.7"
Path of Light in ground lighting.



4
Ligman Lighting "Odessa 2"
Existing Pride Flag uplight.



Night rendering illustrating the candle light vigil lighting design.



ACT

HOPE

ALL THE
NEEDS
NEVER
GIVEN
YADU
FREE