



# OFFICE OF EQUITY AND COMMUNITY ENGAGEMENT OVERVIEW

Isela Ford, MPA

Director, Office of Equity and  
Community Engagement

May 19, 2025



**POPULATION HEALTH DIVISION**  
SAN FRANCISCO DEPARTMENT OF PUBLIC HEALTH



# Agenda

- Office of Equity and Community Engagement Evolution
- Strategic Approach
- Major Areas of Work
- Future Plans

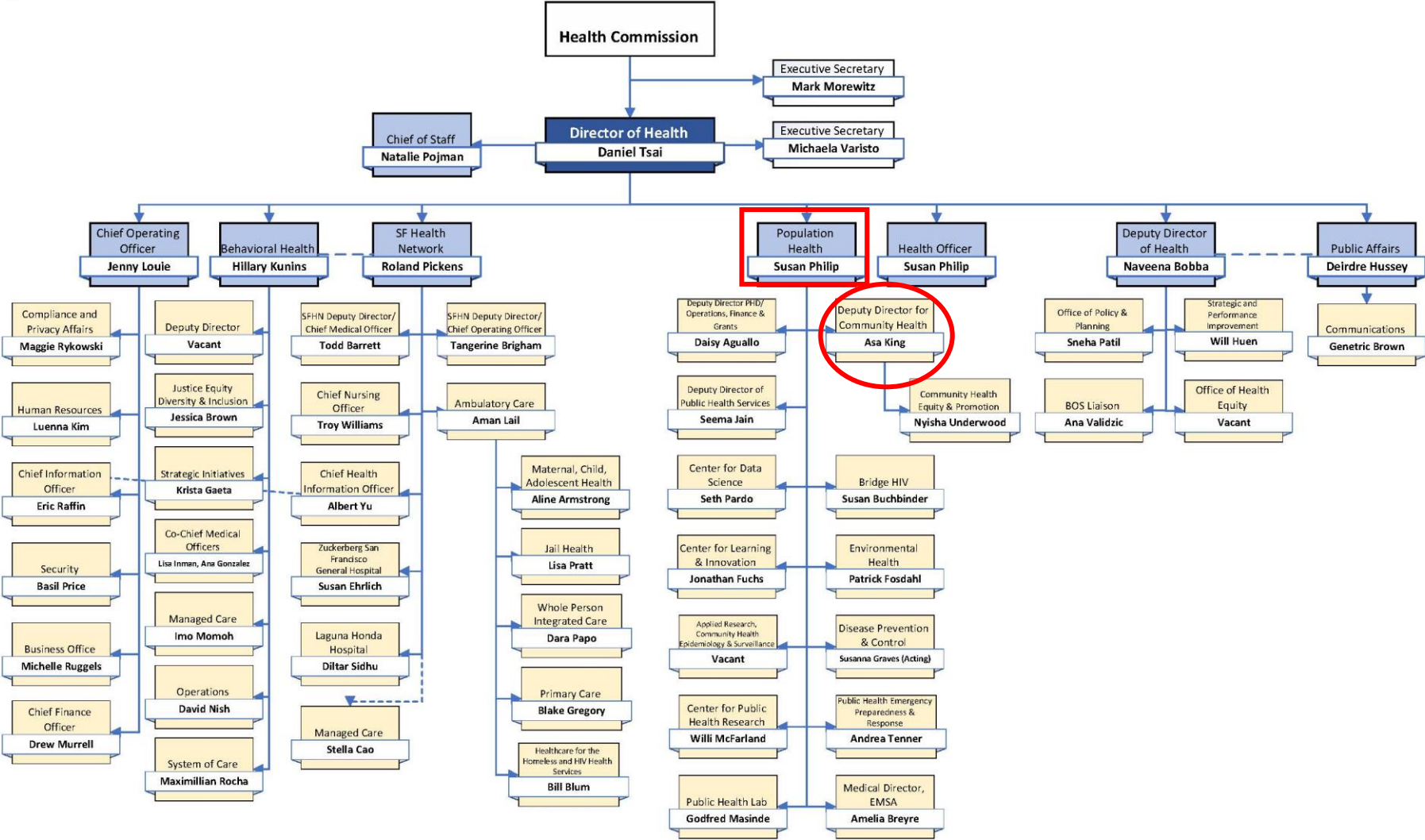


**POPULATION HEALTH DIVISION**  
SAN FRANCISCO DEPARTMENT OF PUBLIC HEALTH





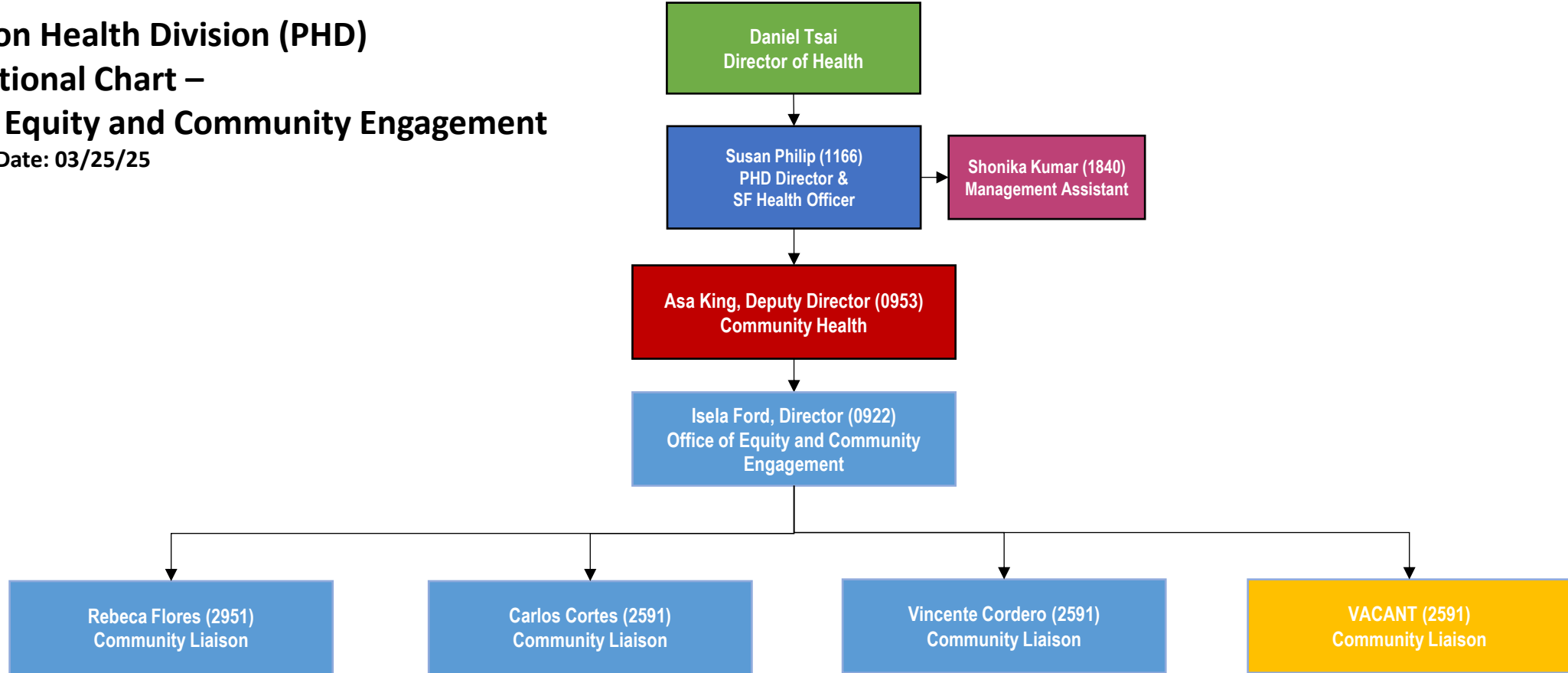
City and County of San Francisco  
Daniel L. Lurie  
Mayor





# Population Health Division (PHD) Organizational Chart – Office of Equity and Community Engagement

Last Revised Date: 03/25/25



## Color Key

PHD Executive Deputies

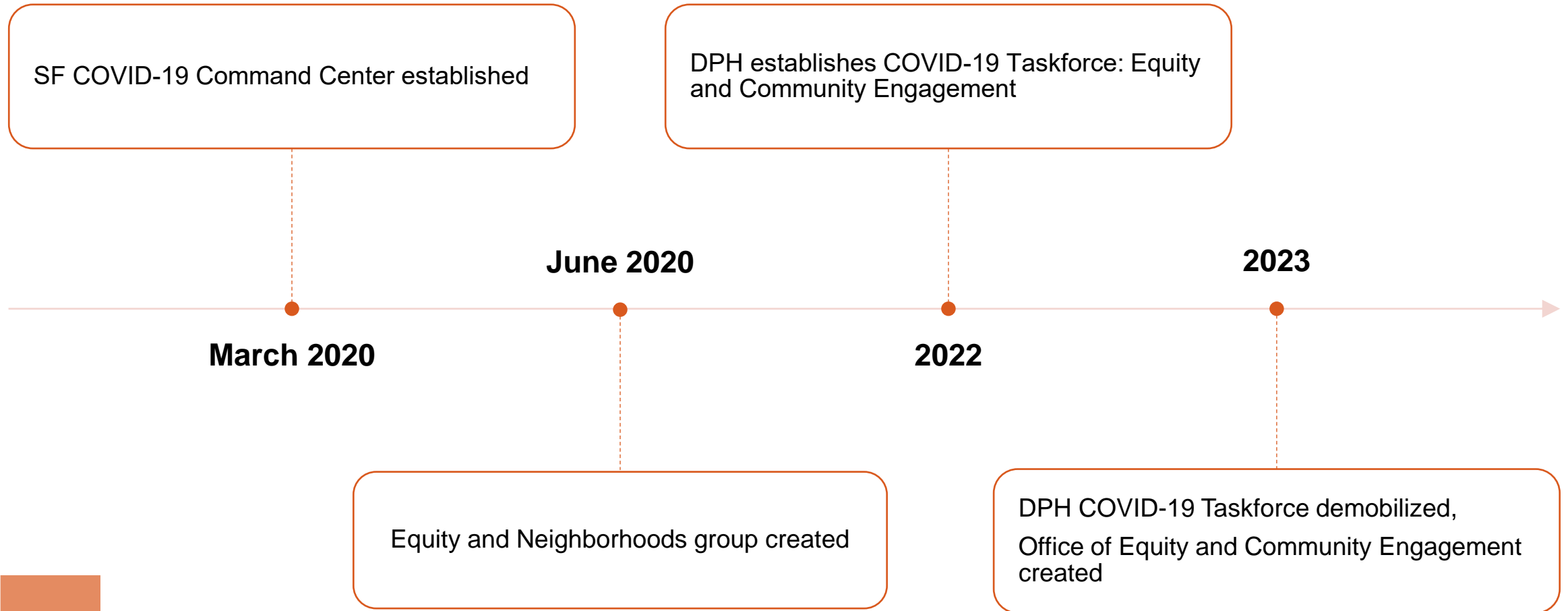
PHD Branches

Vacant Positions

PHD Branches with Acting Directors (s)

DPH Liaison supporting PHD

# OECE Evolution



# OECE Strategic Approach

## **Rooted in Community (Community-Centered)**

We ground our work in deep relationships with the communities we serve, centering their voices, knowledge, and priorities in everything we do.

## **Collective Responsibility**

We are accountable to each other and to the public. We share responsibility for advancing equity, building trust, and using our roles to create meaningful change.

## **Health Justice**

We work to dismantle structural inequities and ensure every community has the conditions and power to achieve optimal health.



DPH staff participate in a site visit to the Pacific Islander Resource Hut, 2024





# Major Areas of Work



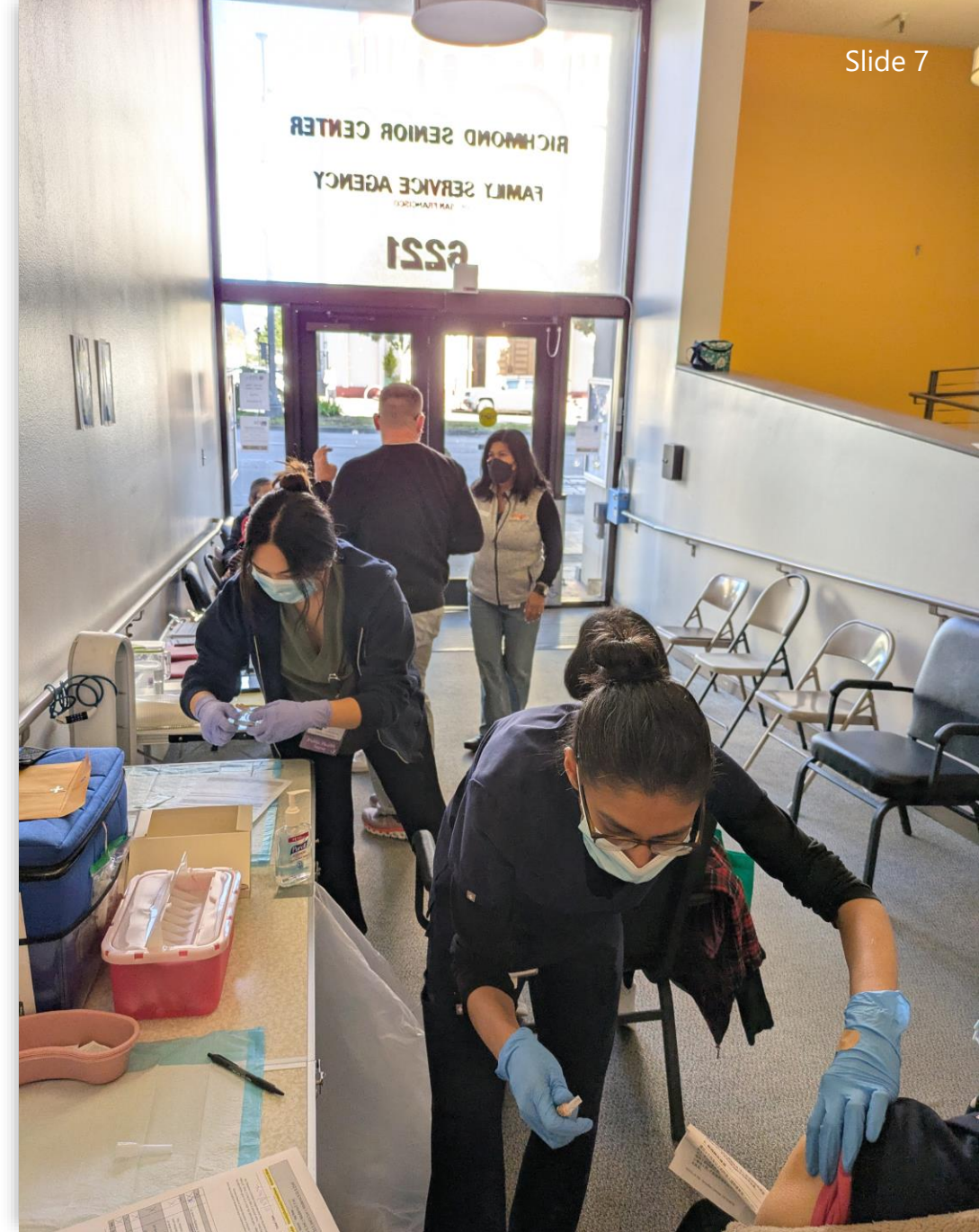
Community  
Vaccinations and  
Disease  
Prevention Efforts



Promotores/  
Community Health  
Workers

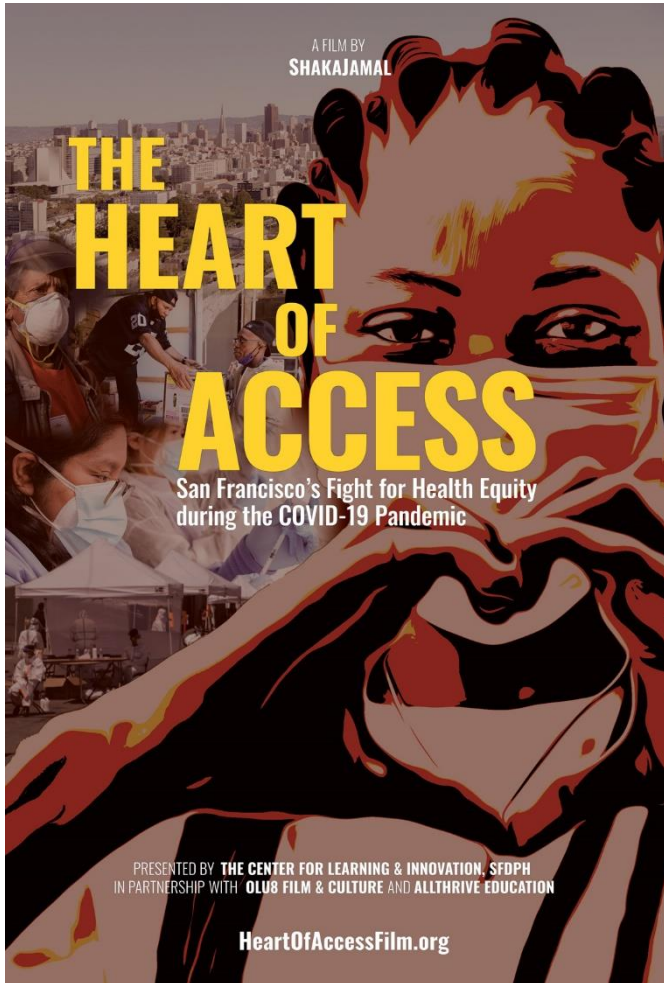


Overdose  
Prevention Support



Staff vaccinate community members at Richmond Senior Center, 2024

# Community Vaccinations and Disease Prevention



- Coordinated annual COVID and flu vaccine clinics
  - 13 vaccine clinics
  - 293 vaccines administered
- Supported the distribution of 45,000 COVID-19 test kits
- Supported the filming and community screenings of the Heart of Access, the story of SF's community-led response to the COVID-19 pandemic
- Coordinated measles and TB education presentations





# Activities with PHD Center for Learning and Innovation:

- Promotores Community of Practice
  - Trained over 80 Promotores from 18 SF CBOs on overdose recognition and response, measles, and other health topics
  - Leadership and Popular Education Training Co-horts
- Planned and staffed the First Annual SF Promotores Conference in Spanish



Promotores participate in a discussion, 2024



First Annual Promotores Conference in San Francisco, 2024



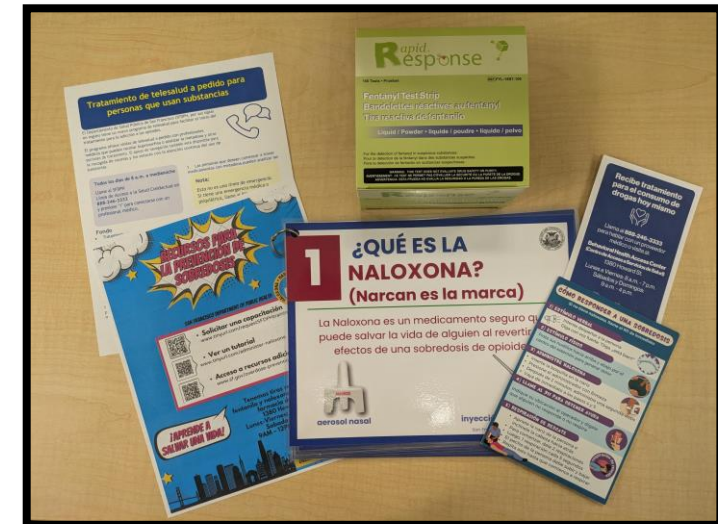
# Overdose Prevention Support

Slide 11

- Overdose Prevention (OD) trainings for Black and African American, Latine and Indigenous, People Experiencing Homelessness communities
- Indigenous and Latine Equity team
  - Facilitated 19 OD trainings in Spanish
  - Informed production of OD prevention videos for Mayan language speakers
  - OD curricula and trained 1st cohort of 8 DPH Spanish speaking staff
- Materials Translation and Trainings



Staff from Instituto Familiar de La Raza develop Mayan language videos on Naloxone, 2025



A photo of Spanish language resources used for CORE work by the ILE team, 2024

# Community Partners





# OECE Future Plans



Community meeting coordination to disseminate the Community Health Improvement Plan (CHIP)



Support 2025 Fall Vaccine Strategy by informing and coordinating with key community partners once resource allocations have been determined



Grow Promotores Community of Practice to include English-language Community Health Workers (CHWs)

**"There are some amazing people at the DPH...It's building those relationships with the staff that understands community... It makes it easier to problem-solve because there's trust"**

*Community Interview Participant: Elevating the Importance and Quality of Community Engagement within the San Francisco Department of Public Health. (2022)*





# THANK YOU!

Isela Ford, MPA  
Director,  
Office of Equity and Community Engagement  
[isela.ford@sfdph.org](mailto:isela.ford@sfdph.org)



**POPULATION HEALTH DIVISION**  
SAN FRANCISCO DEPARTMENT OF PUBLIC HEALTH