



# BIG ART loop

100 large-scale sculptures. 34 miles of art. Free for everyone.

# GOLDEN GATE PARK ART PROPOSAL

JUNE 25TH, 2026

**BIG**  
**ART** *loop*



NOT FOR DISTRIBUTION

**BURDEN OF THE BEAST**  
**CHAIN OF LAKES**



## ARTWORK STATEMENT

### **BURDEN OF THE BEAST | CHAIN OF LAKES**

Burden of the Beast is a monumental North American Plains bison carrying the weight of a house through its body, constructed from materials salvaged from homes damaged by climate-related events. Placed within the Chain of Lakes in Golden Gate Park, the work sits in a landscape defined by water, migration, and ecological interdependence.

The bison, once central to vast American ecosystems, appears here as both out of place and deeply symbolic, a reminder of displacement across time. The house embedded within its form evokes human presence and pressure on the land, suggesting shelter but also fragility. Composed of materials marked by climate impact, it carries the physical and emotional residue of environments under stress.

At the edge of these interconnected lakes, where water levels, wildlife, and weather patterns are in constant flux, Burden of the Beast reflects a shared condition of adaptation. It invites viewers to consider the weight of what we build, what we lose, and what we ask the natural world to carry alongside us.

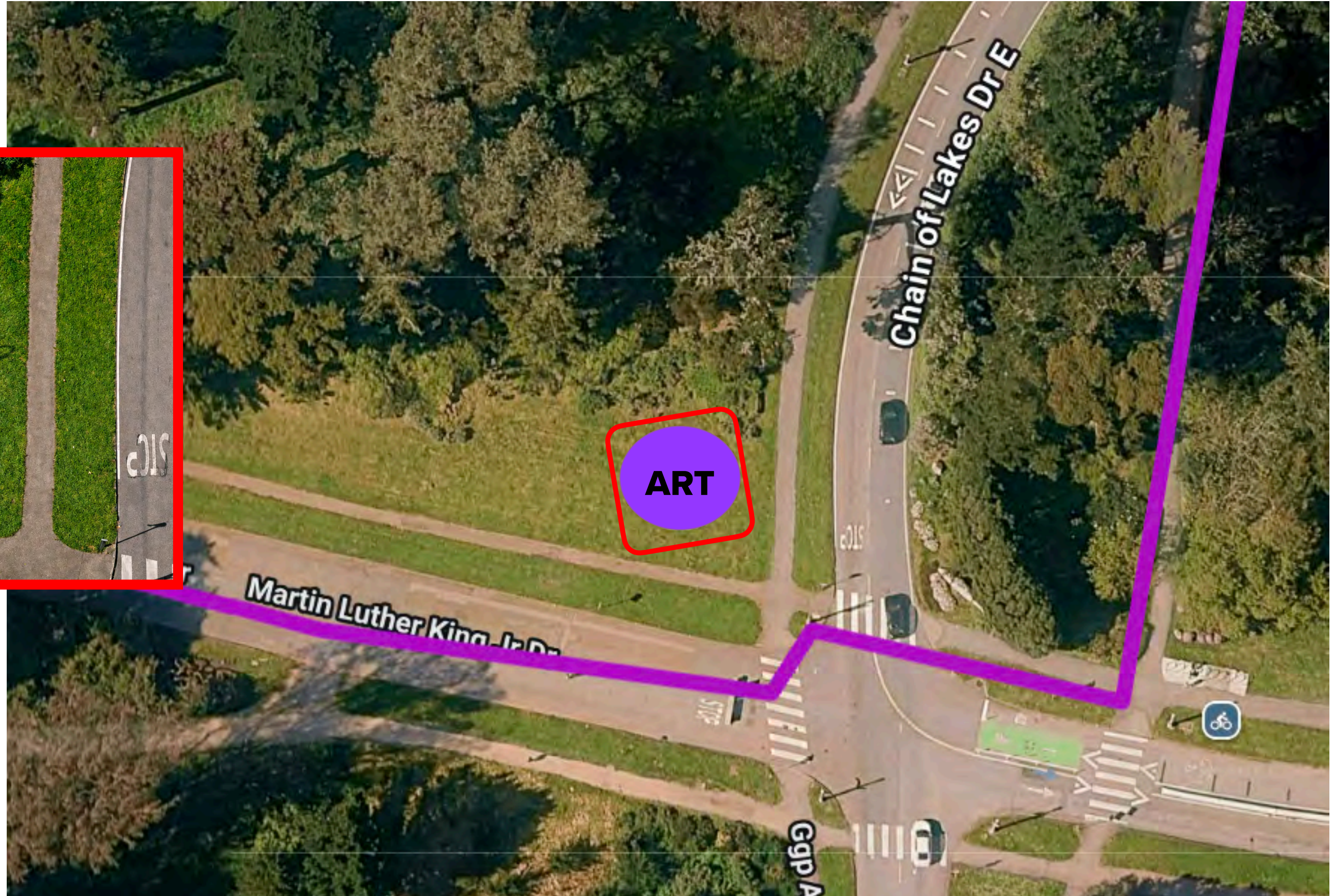
Photo by Walker Babington

*Please note the balcony and ladder in previously shown photos will not be included in the Chain of Lakes placement of the sculpture.*



# ARTWORK LOCATION

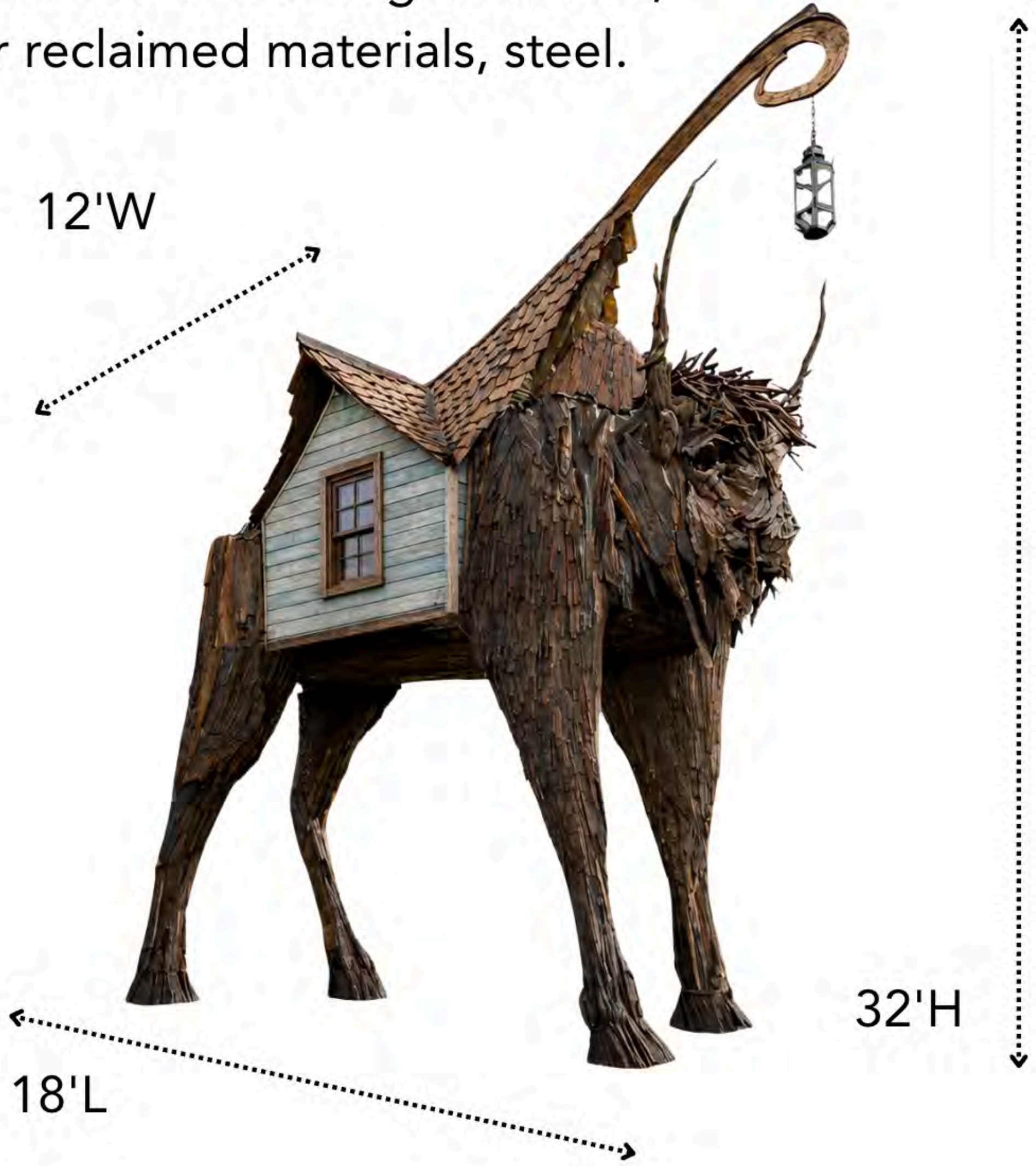
Within Golden Gate Park, Chain of Lakes  
Martin Luther King Jr Dr & Chain of Lakes Dr E.



# Burden of the Beast

18'L x 12'W x 32'H

Materials: reclaimed and salvaged lumber, metal, other reclaimed materials, steel.



## SCULPTURE SPECS + INSTALL

**INSTALLATION:** One year from date of installation, anticipated to be in early 2027, Exact dates TBD pending engineering/fabrication

**Dimensions:** 18'L x 12' W x 32' H

**Weight:** 7000lbs.

**Materials:** Reclaimed and salvaged lumber, metal, other materials, steel.

### **On-Site Installation:**

1. Day 1: Layout site, unload sculpture pieces with forklift, anchor legs
2. Day 2: Install next section of sculpture with forklift
3. Day 3: Install top section of sculpture with forklift and cherry picker
4. Day 4: Finalize connections and complete sculpture installment.
5. Day 5: Overflow day for final touches.



Photo by Glenn Mosley

## ABOUT THE ARTIST | WALKER BABINGTON | NEW ORLEANS, LA

Walker Babington is a New Orleans based sculptor whose large scale works transform reclaimed materials into contemporary folk art. Drawing from mythology, folklore, environmental themes, and popular culture, he creates immersive sculptures that blend imagination, storytelling, and social commentary. Using salvaged storm debris, driftwood, architectural remnants, and industrial materials, Babington gives new life to objects shaped by time and human experience.

A self taught artist, his work has been exhibited at Burning Man and in public spaces and museums across the United States. His sculptures often occupy the space between fantasy and reality, ranging from monumental creatures and architectural forms to interactive works such as ZozoBot, a towering "curious clonndroid" that invites viewers to engage with questions surrounding technology, artificial intelligence, and human innovation.

His acclaimed sculpture Burden of the Beast, constructed from salvaged hurricane debris, reclaimed wood, and remnants of New Orleans carnival floats, depicts a monumental bison carrying a house on its back. The work serves as a powerful metaphor for resilience, displacement, and adaptation in the face of climate change, inviting viewers to reflect on how communities carry memory, identity, and hope through periods of transformation.

Through works that merge wonder, craftsmanship, and environmental awareness, Babington encourages audiences to engage with both the material history and future possibilities embedded within the landscapes they inhabit.

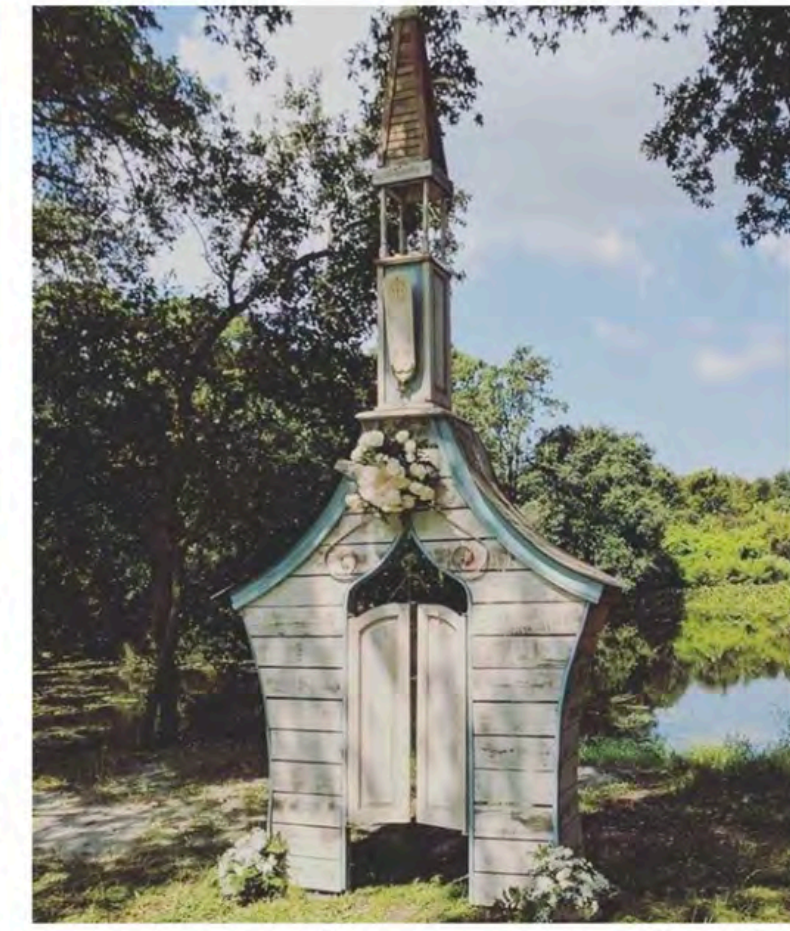
# PAST WORKS & INSTALLATIONS



Zozo Bot by: Bill Tiernan at The Hermitage Museum and Gardens



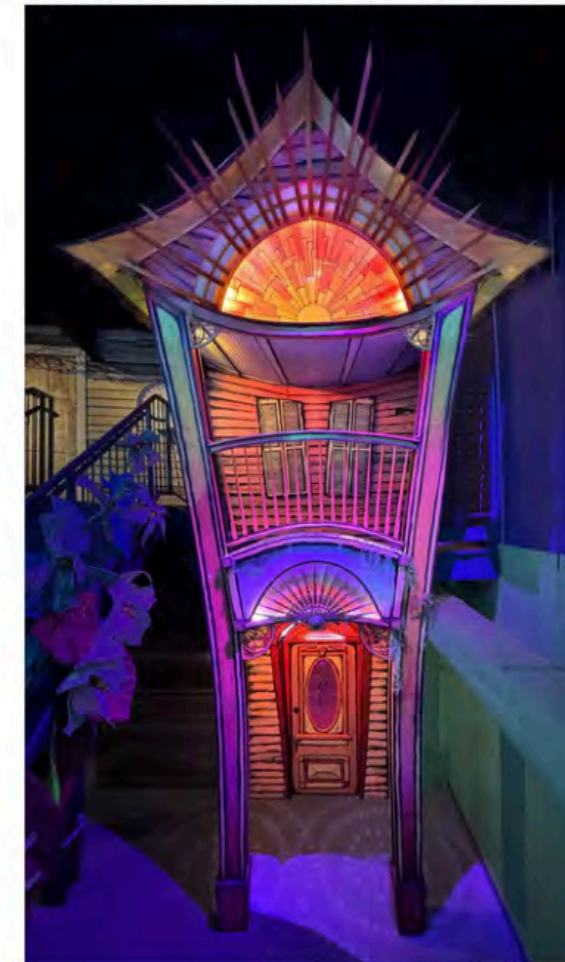
BABA YAGA (2015)



CHAPEL OF YES (2017)

HOUSE OF THE RISING SUN (2025)

SNAIL BOAT (2023)



# COMMUNITY SUPPORT

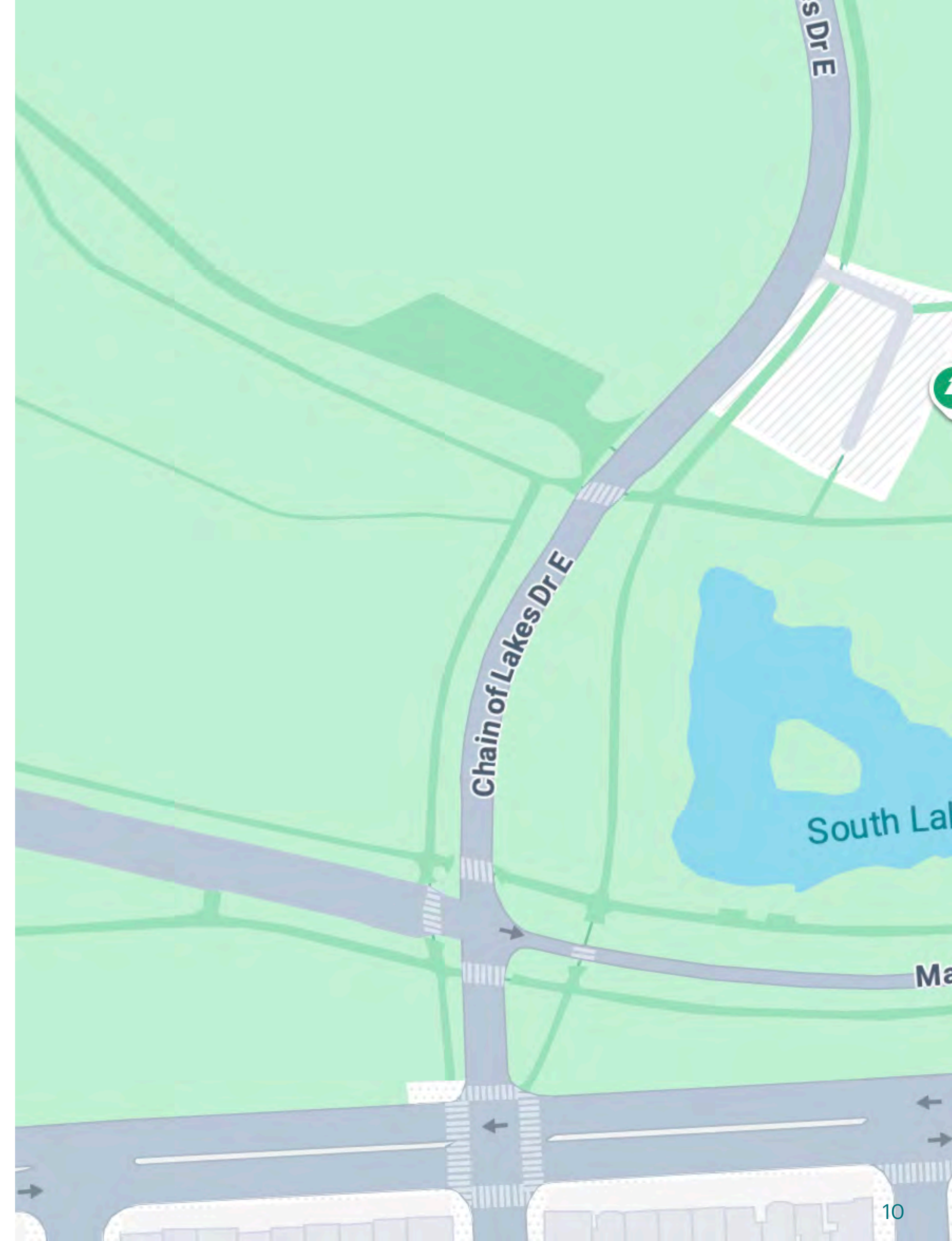
## GGP CHAIN OF LAKES | DISTRICT 4

### LETTERS OF SUPPORT:

- District 4 Supervisor Alan Wong
- Mid-Sunset Neighborhood Association
- Offix Edge (Local Business)

### ADDITIONAL OUTREACH:

- Sunset Mercantile
- Saint Ignatius Neighborhood Association
- Outer Sunset Neighborhood Association
- GenRyu Arts
- The Great Highway Art Gallery
- Sunset Communal Arts
- Far Out Gallery
- Birdhouse Gallery SF
- Sunset Commons
- Home Coffee Roasters
- Sunset Clay House
- Greenwood Trail Forest School
- Jefferson Elementary School



# BALBOA PARK FAIRY CIRCLE

JUNE 25TH, 2026

**BIG**  
**ART** *loop*



NOT FOR DISTRIBUTION

**BIG APPLE BY NICOLAS SYNNOT  
BALBOA PARK FAIRY CIRCLE**



## **ARTWORK STATEMENT**

### **BIG APPLE BY NICOLAS SYNNOTT | BALBOA PARK**

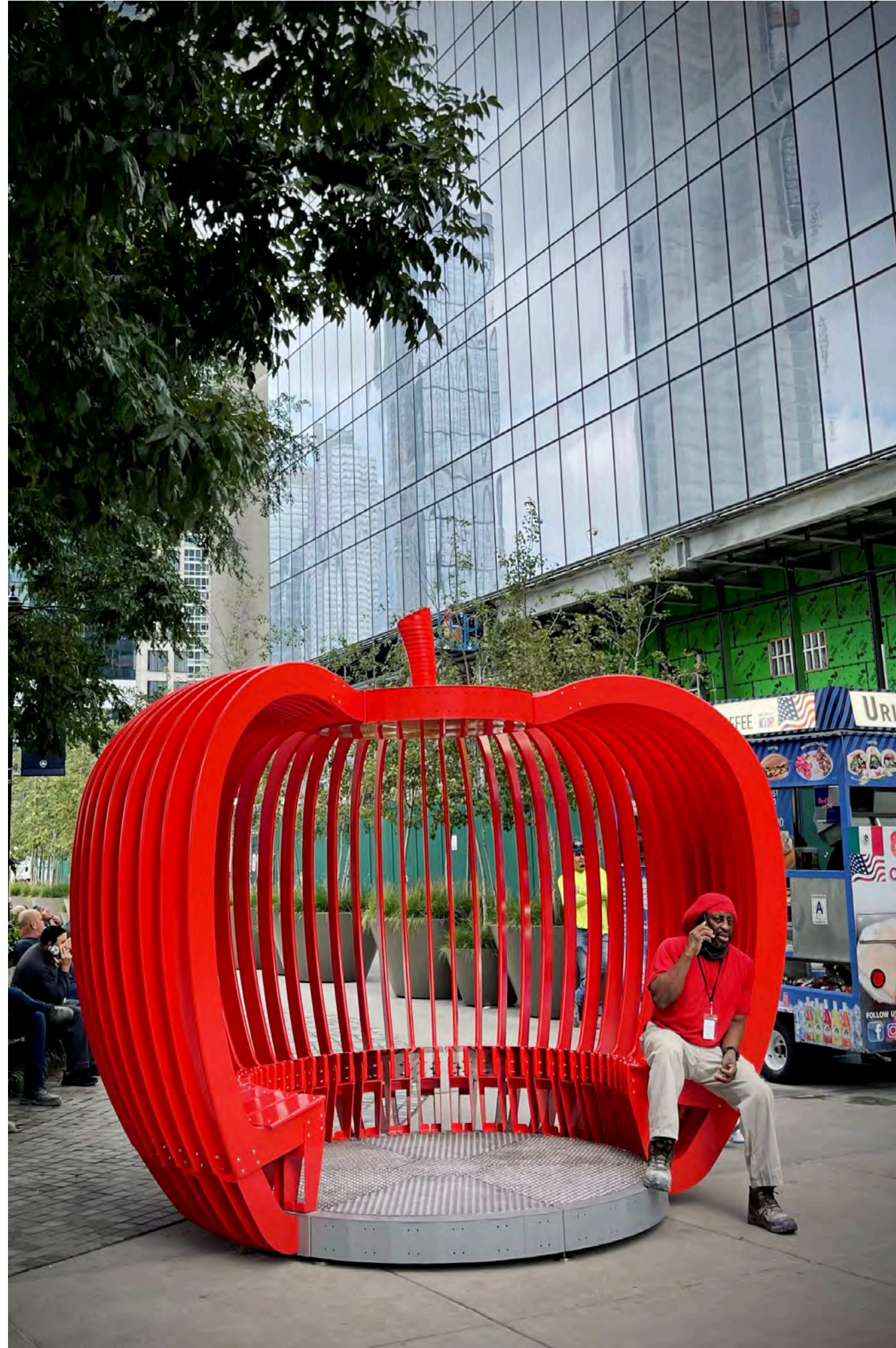
Big Apple transforms a familiar, iconic form into an open, shared space, part sculpture and part gathering place. At first glance, the work reads as a bold, oversized apple set within the landscape. As visitors approach, it reveals itself as something more intimate, a place to sit, pause, and spend time together.

Installed within Balboa Park, the sculpture aligns naturally with the rhythms of the park, where picnics, birthday celebrations, and casual gatherings unfold across the lawn. Its scale ensures there is always room inside, while the inward-facing seating gently encourages connection. Different groups can share the space at once, creating moments where interactions happen organically, whether between families, friends, or strangers.

The work functions as a piece of social infrastructure. Without directing how it should be used, it creates the conditions for people to gather, linger, and engage with one another. Children can move through it, families can settle in for a meal, and individuals can find a moment of rest while still feeling part of a larger shared environment.

By reimagining a universally recognizable form as a communal setting, Synnott invites visitors to step inside the sculpture and make it their own. Big Apple becomes a backdrop for everyday moments, a place where small celebrations, conversations, and connections take shape, reinforcing the role of public art as something to be experienced together rather than simply observed.

Photo by [hykalliance.org](http://hykalliance.org)

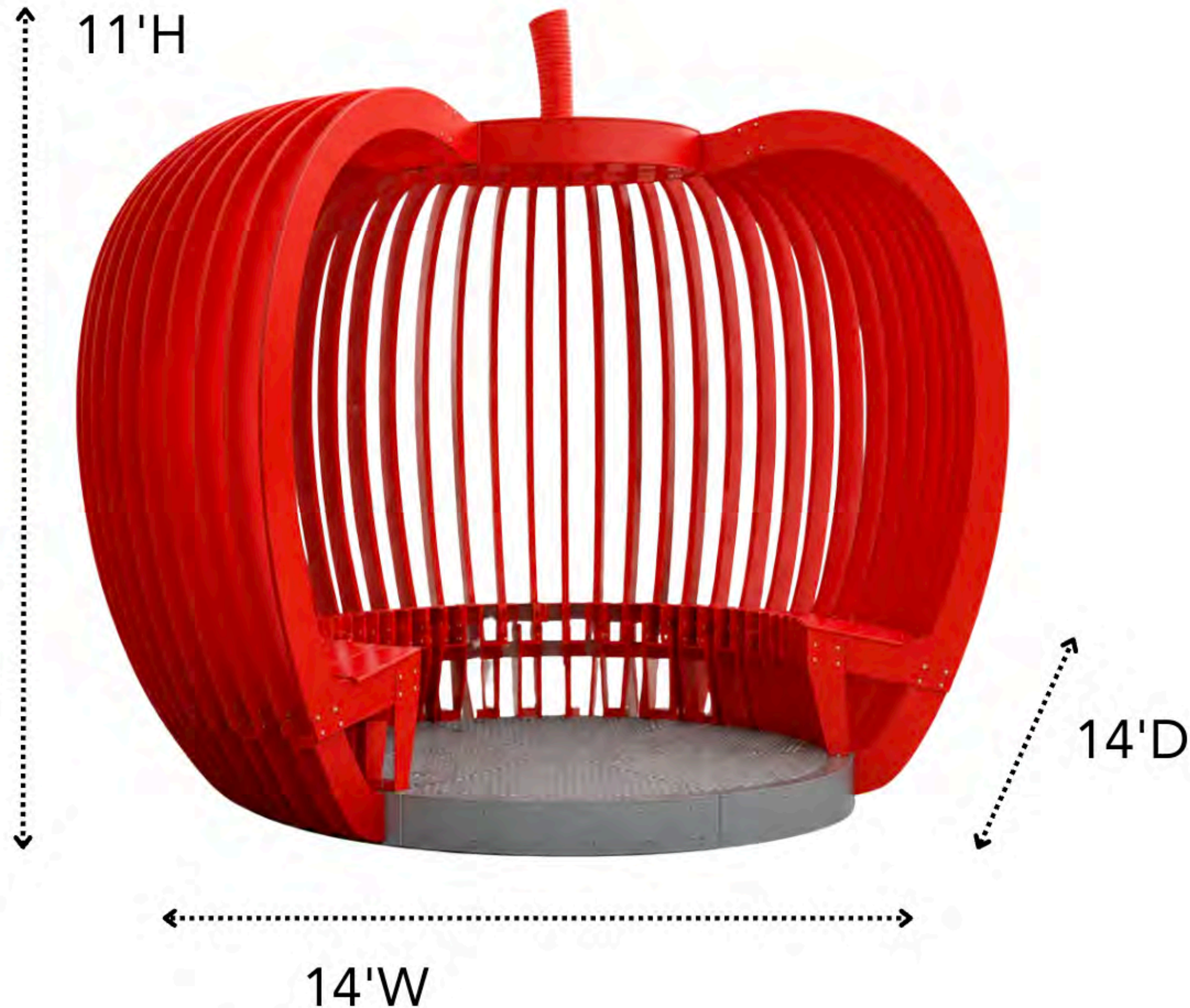


Photos by World of Marzell and the Hudson Yards Hell's Kitchen Alliance

# Big Apple

14'W x14'D x11'H

Materials: Steel



## SCULPTURE SPECS + INSTALL

**INSTALLATION:** One year from date of installation, anticipated to be in early 2027, Exact dates TBD pending engineering/fabrication

**Dimensions:** 14'H x 14' W x 14' D

**Weight:** ~1,400lbs

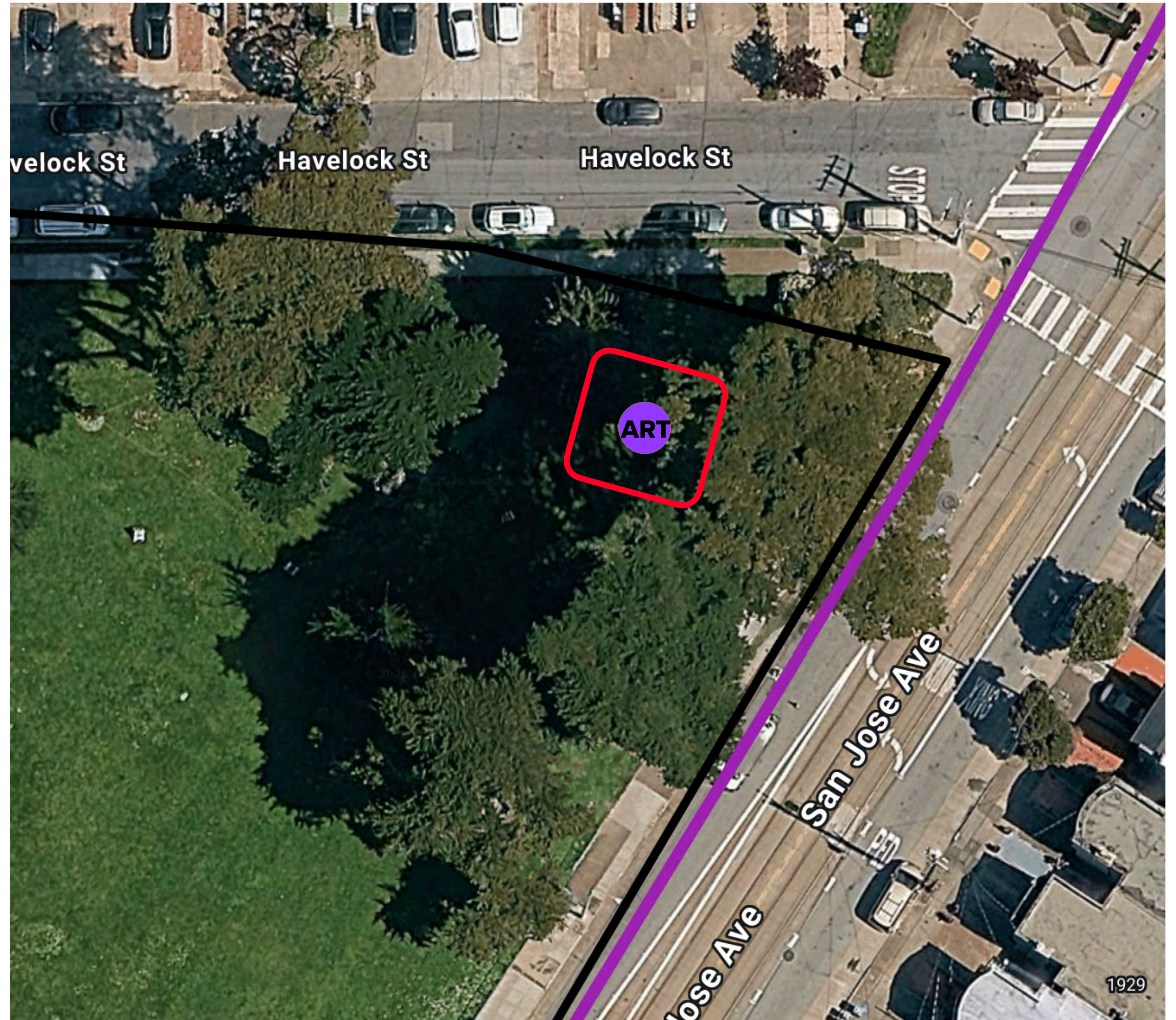
**Materials:** Painted steel

### On-Site Installation:

1. Sculpture is hand assembled on site and bolted. Anchoring plan in coordination with RPD and engineers.
2. 3-4 crew
3. Sculpture Installation takes 1 day total.

# ARTWORK LOCATION

On the corner of Havelock St & San Jose Ave



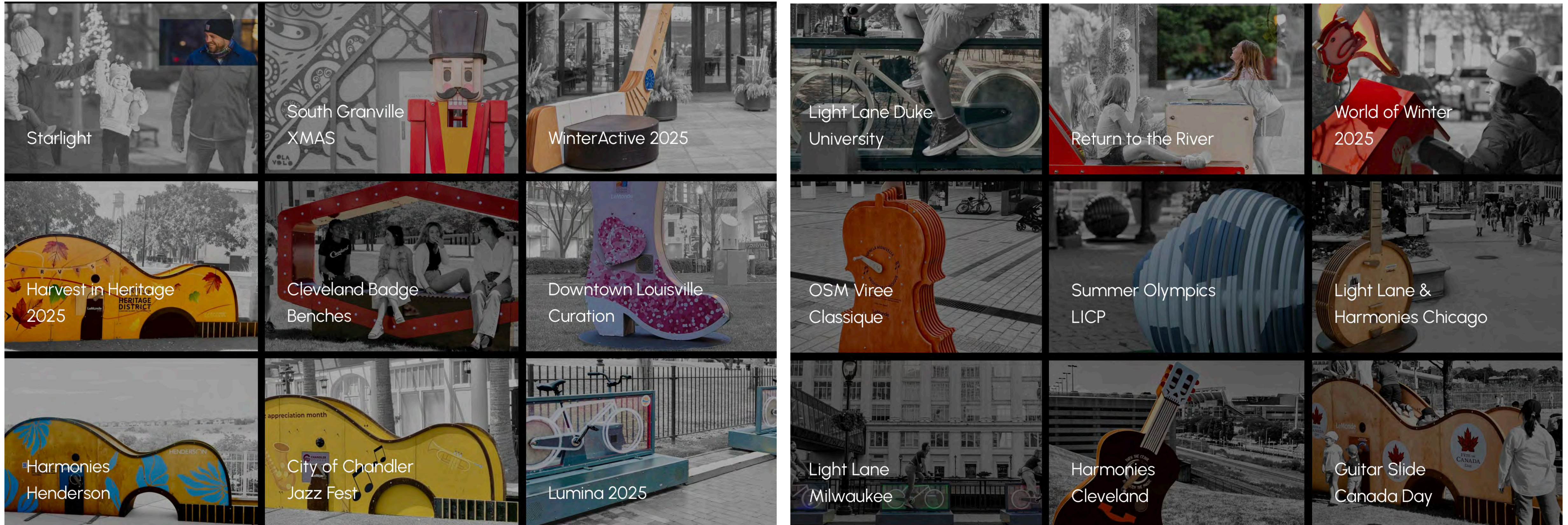


## ABOUT | LEMONDE STUDIO | MONTREAL, QUEBEC CITY, NEW YORK CITY, AND AUSTIN, TEXAS

LeMonde Studio creates interactive public art and immersive experiences that bring together creative design, community engagement, and environmentally conscious technology. Working across natural environments and commercial spaces, the studio develops installations that invite curiosity, participation, and connection.

Its projects often place visitors at the center of the experience, using human-powered or green technology to explore the value of energy while creating memorable shared encounters. Designed with adaptability in mind, LeMonde Studio's works can evolve, move between locations, and respond to different communities and settings.

# PAST WORKS & INSTALLATIONS



Photos taken from [lemondestudio.com](https://lemondestudio.com)

# Balboa Park Community Survey

Before choosing artwork for Balboa Park, we went to the people who live with it every day. In partnership with Friends of Balboa Park and neighborhood groups across District 11, we asked residents what they wanted to see in their park.

## WHAT WE DID

- Translated the survey into Chinese with support from the District 11 Supervisor's office, reaching the neighborhood's large Chinese speaking community.
- Built a short, five minute survey using forced ranking, so neighbors weighed real tradeoffs instead of rating everything important.
- Let those community priorities guide our curation, which led us to Big Apple.

**40+** residents responded, shaping the final selection.

## IN THE COMMUNITY'S WORDS

### What we heard

“

Make it a destination!

“

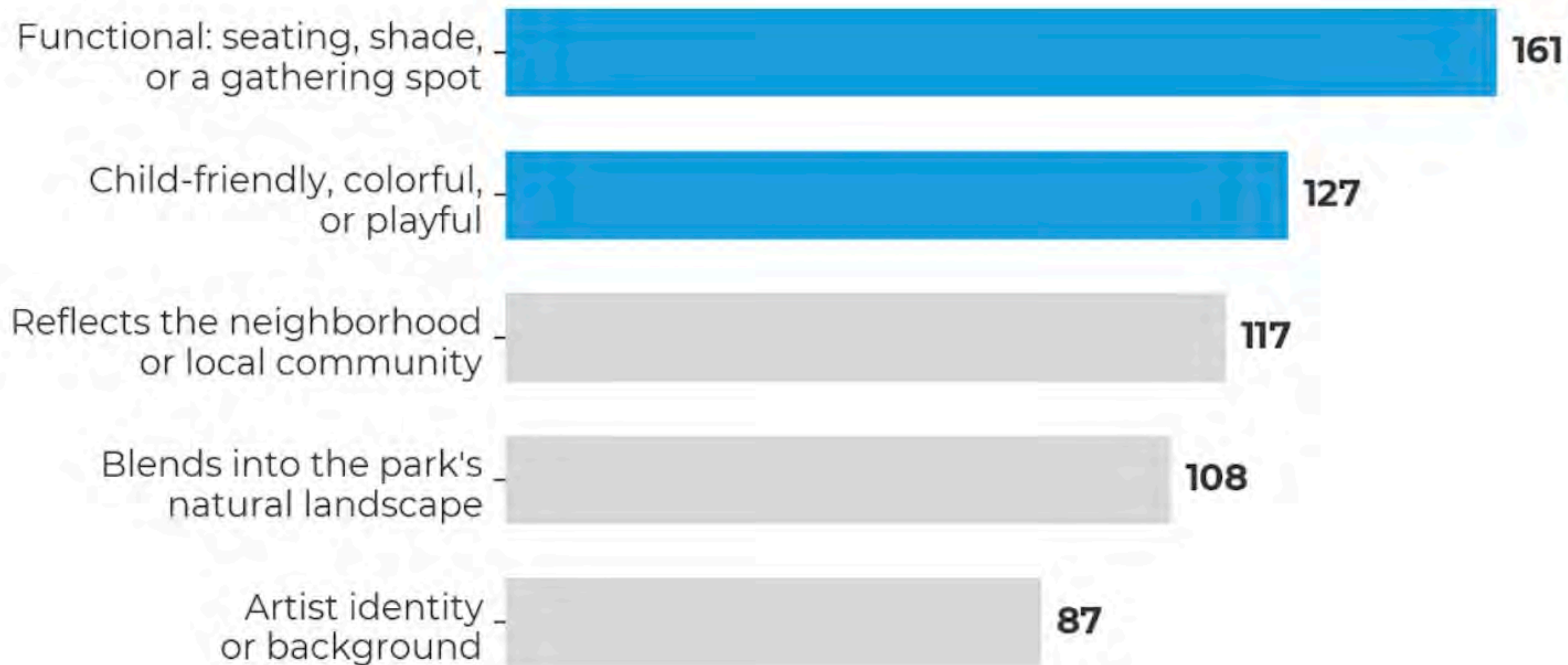
Something bright, playful and bold, to counter the concrete behemoth of the pool building.

“

An opportunity to infuse the park with focal points for curiosity, connection and creativity.

Verbatim responses from the Balboa Park public art community survey.

# What the community values most in the art

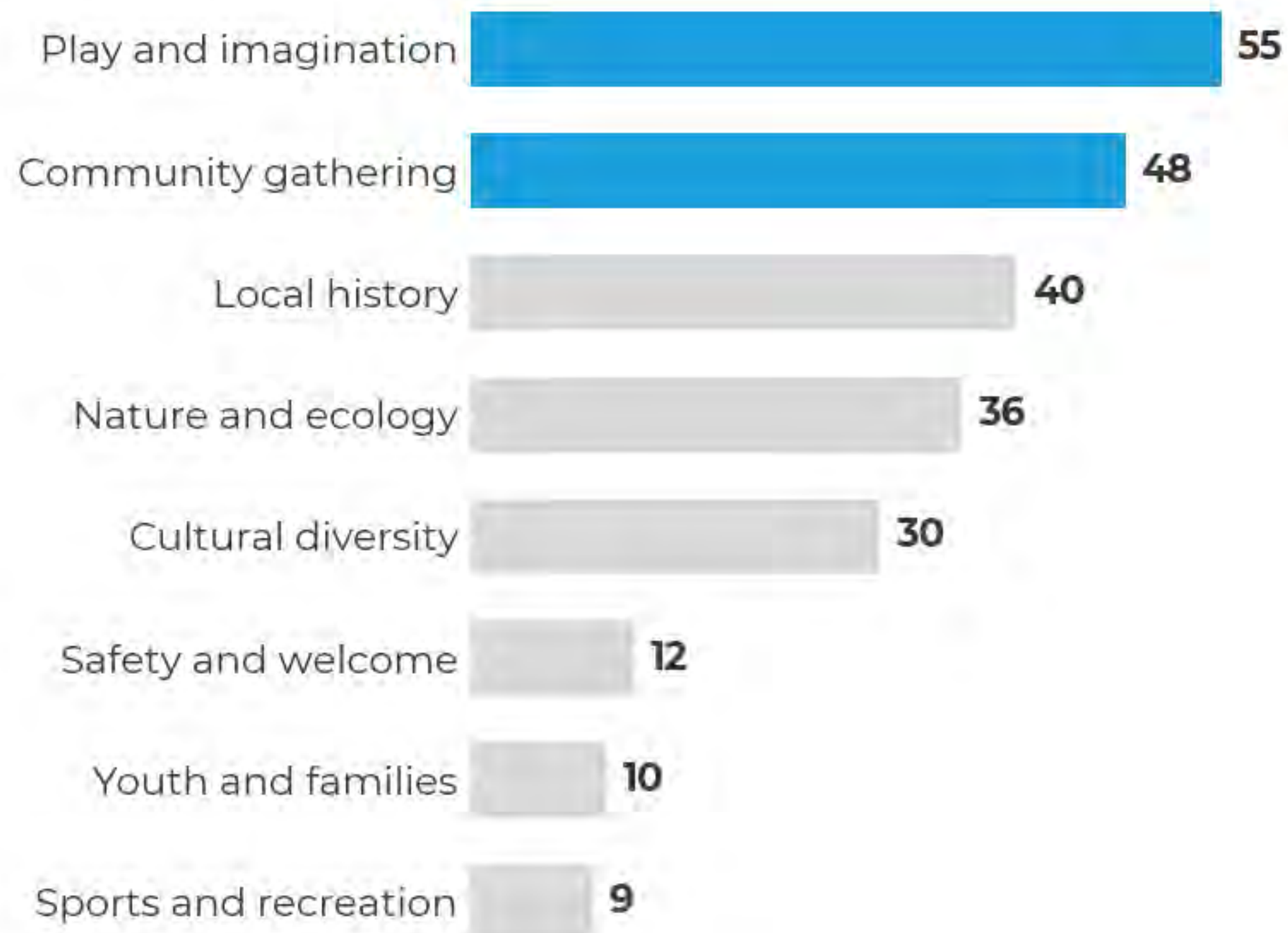


**Practical and playful lead every other quality.**

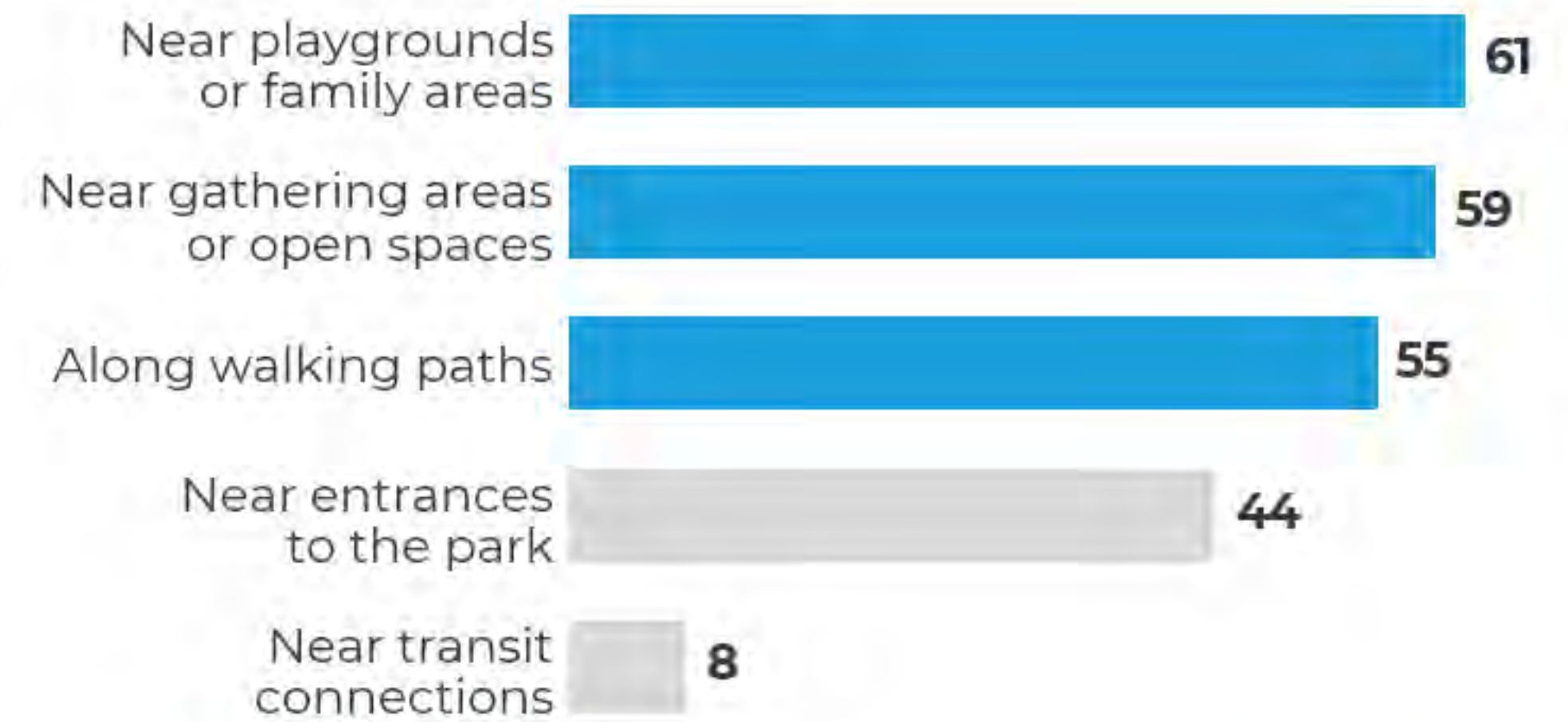
Weighted priority score across a ranked 1 to 5 question. Higher is more important to the community.

# What the community wants, and where

## Most desired themes



## Where the community wants to see it



**The family and gathering core of the park.**

Weighted priority score across top-3 ranked questions. Higher means ranked more often and higher.

# COMMUNITY SUPPORT

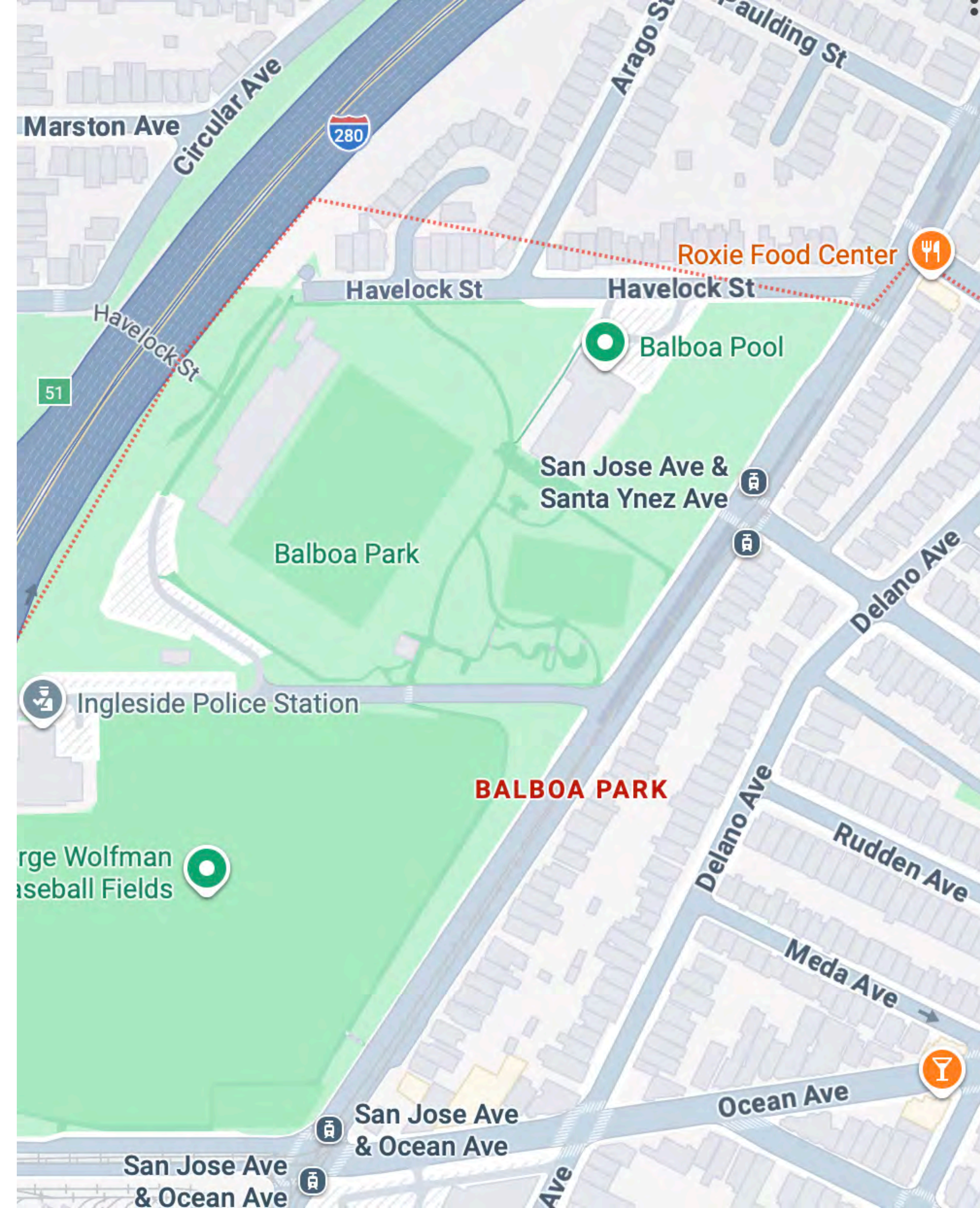
## BALBOA PARK FAIRY CIRCLE | DISTRICT 11

### LETTERS OF SUPPORT:

- Paul Hagen, Friends of Balboa Park
- Mel Flores, Excelsior District Improvement Association
- Nicholas McCurdy, Community Mentor

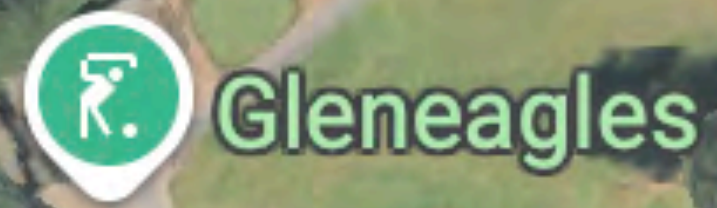
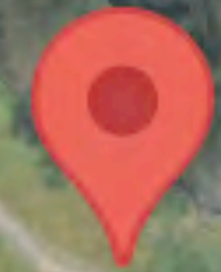
### ADDITIONAL OUTREACH:

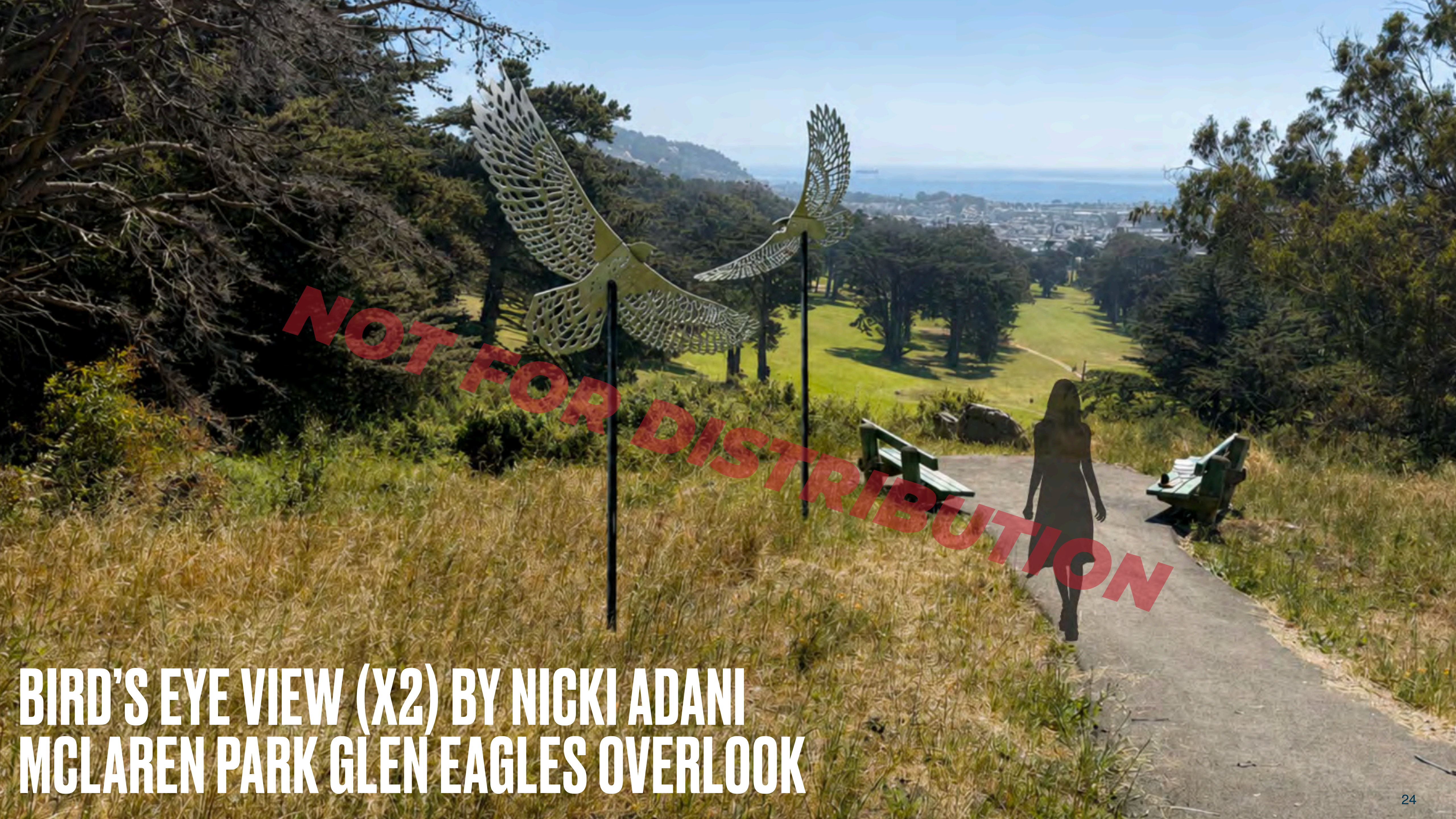
- Friends of Balboa Park
- Supervisor Chyanne Chen, District 11
- Excelsior Action Group
- Outer Mission Merchants and Residents Association (OMMRA)
- Balboa High School
- James Denman Middle School
- San Francisco Community School
- Filipino Community Center
- Excelsior Community Center
- Geneva Community Garden
- Excelsior Branch Library



# MCLAREN PARK GLEN EAGLES OVERLOOK

JUNE 25TH, 2026





NOT FOR DISTRIBUTION

**BIRD'S EYE VIEW (X2) BY NICKI ADANI  
MCLAREN PARK GLEN EAGLES OVERLOOK**



## **ARTWORK STATEMENT**

### **BIRD'S EYE VIEW BY NICKI ADANI | MCLAREN PARK GLEN EAGLES**

#### **OVERLOOK**

Bird's Eye View brings a sense of motion and lightness to the elevated landscape of McLaren Park Glen Eagles Overlook. Composed of two soaring hawks with expansive wingspans, the installation captures a moment of suspended flight, hovering just above the ground while their intricate forms cast shifting shadows below.

Positioned on a visible hillside, the sculpture reads both from a distance and up close. From across the park and along the road, the hawks appear as silhouettes in motion, drawing the eye upward. As visitors approach, the experience becomes more intimate, with the laser-cut feathers projecting detailed patterns onto the ground that move and change with the light.

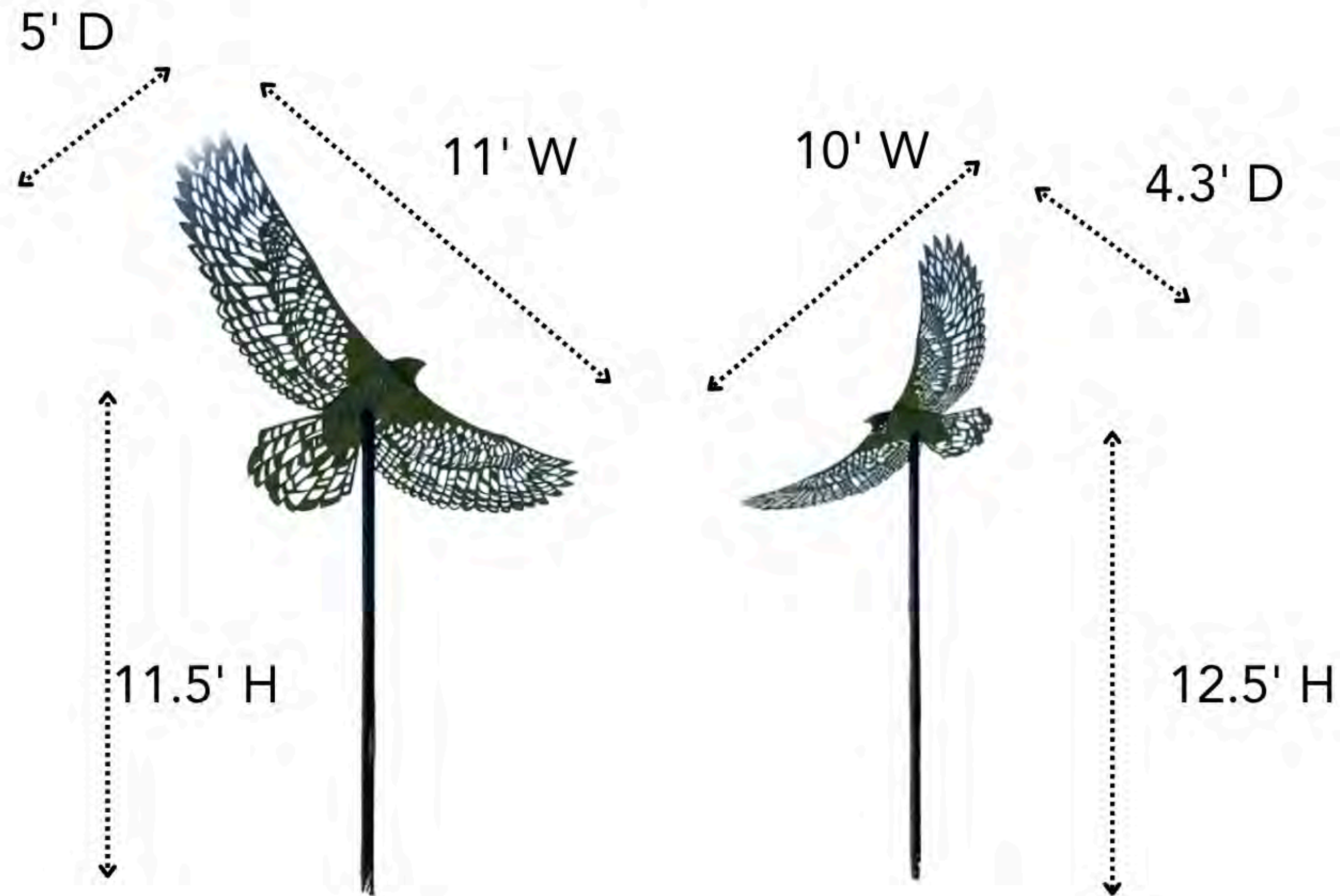
The work is activated by its environment. Sunlight, time of day, and the viewer's position all shape the experience, making the shadows an essential extension of the sculpture itself. Subtle inscriptions within the wings, "BE YOU" and "FLY FREE," emerge through both form and shadow, reinforcing the themes of freedom, individuality, and self-expression.

At Glen Eagles Overlook, Bird's Eye View functions as both landmark and atmosphere, a dynamic presence that connects sky and ground while inviting visitors into a moment of reflection, movement, and possibility.



Photos courtesy from Nickiadani.com

# Bird's Eye View (x2)



## SCULPTURE SPECS + INSTALL

**INSTALLATION:** One year from date of installation, anticipated to be in early 2027, Exact dates TBD pending engineering/fabrication

**Dimensions:** ~13' H x 10'-11' W x 5' D (x2)

**Weight:** ~300 lbs.

**Materials:** Aluminum, steel

### On-Site Installation:

1. Unloaded, hand carried to site.
2. Sculpture assembled on the ground. Anchoring plan per engineering. Sculpture lifted by hand or VR, depending on plan established.
3. Sculpture takes half a day to install.

Hawk 1: Post height 11.5', Wingspan 11', Depth 5'

Hawk 2: Post height 12.5', Wingspan 10' x Depth 4.3'

Materials: Aluminum, steel

## ARTWORK LOCATION

McLaren Park, Glen Eagles Overlook, on top of hill, near benches.





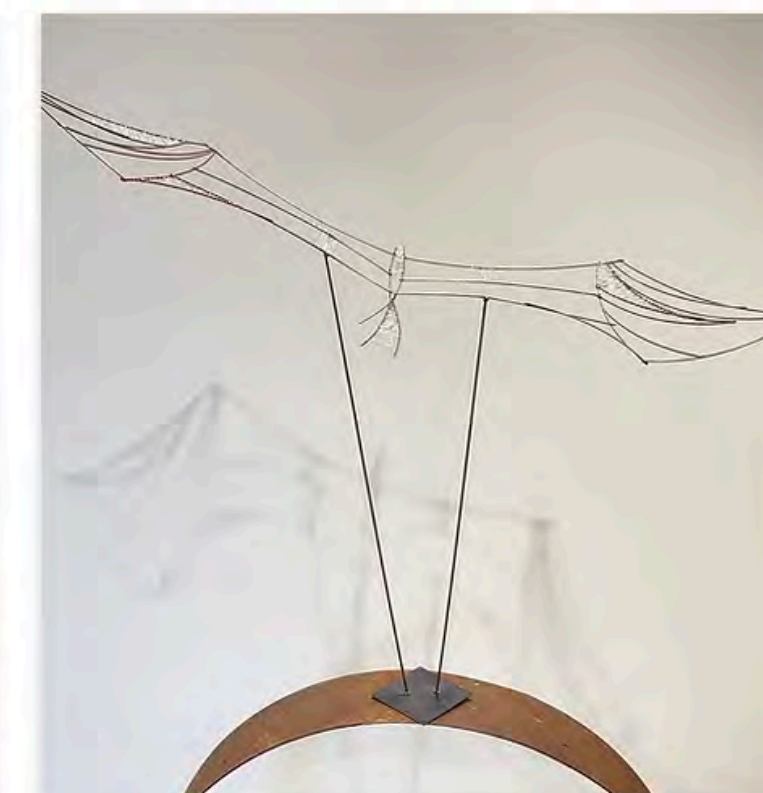
## ABOUT THE ARTIST | NICKI ADANI | SAUSALITO, CA

Nicki Adani (b. 1975, Munich, Germany) is a Bay Area-based multidisciplinary artist whose practice spans sculpture, painting, mixed media, and site-responsive public art. Originally trained in fashion design at ESMOD Munich, she worked internationally in Europe, New York, and California before establishing her art practice, bringing a distinctive understanding of form, structure, and movement to works ranging from intimate studio pieces to large-scale public installations. Inspired by expansive landscapes and birds of prey, Adani creates sculptural works that explore perspective, light, shadow, and spatial experience. Through dynamic forms that shift with changing viewpoints and natural conditions, her work expands perspective and inspires a vaster sense of possibility, inviting viewers to recognize the potential within themselves.

Her public artworks include *Bird's Eye View*, commissioned for BottleRock Napa, and *Taking Flight*, an Honoraria-funded installation for Burning Man. Her work has been featured at Silicon Valley Sculpture, Petaluma Arts Center, and galleries throughout the San Francisco Bay Area, and is held in private collections. She was selected for a Sonoma ReOpening Grant collaboration funded by the National Endowment for the Arts.

Committed to collaborative and community-centered projects, Adani has contributed to David Best Temple installations presented at the Smithsonian Renwick Gallery and the Oakland Museum of California. She frequently collaborates with engineers, fabricators, and project teams to realize ambitious site-responsive works from concept through installation.

# PAST WORKS & INSTALLATIONS



Photos curtesy from Nickiadani.com

# COMMUNITY SUPPORT

## MCLAREN PARK GLEN EAGLES OVERLOOK | DISTRICT 10

### LETTERS OF SUPPORT:

- Supervisor Chyanne Chen, District 11
- Supervisor Jackie Fielder, District 9
- Outward Bounds Rope Course (Sean Altman)
- TRILCE & CHARLES, Friends of McLaren Park
- Linda Stark Litehiser, Friends of AMP
- Tom Borden, McLaren Park Enthusiast

### ADDITIONAL OUTREACH:

Johanna Miyaki (Crosstown Trail / KALW)

Friends of McLaren Park (Paul Hagen)

McLaren Collaborative

Supervisor Shamann Walton, District 10

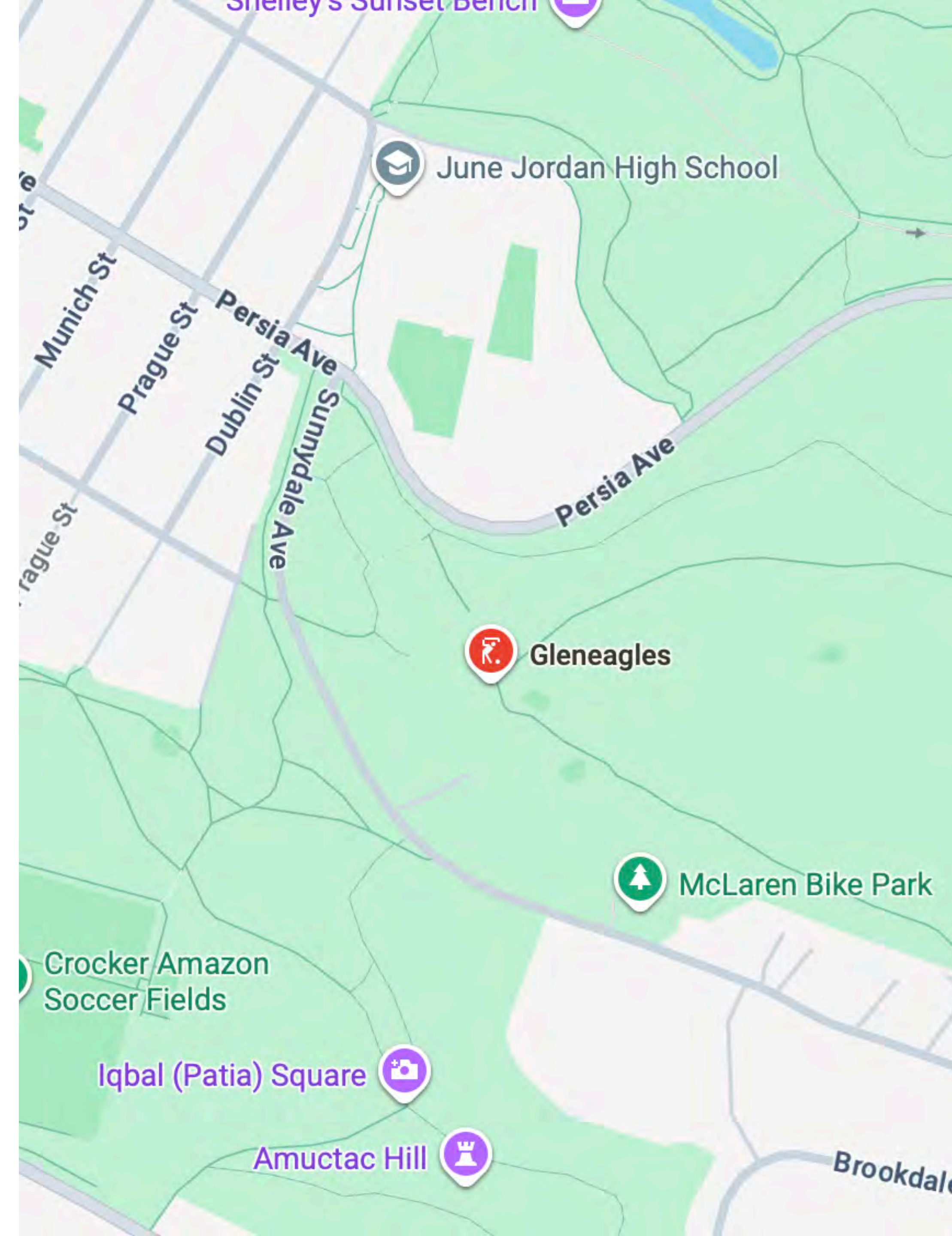
Glen Eagles Golf Course

Asian Pacific Islander Cultural Center

Visitation Valley Community Center

Mission Blue Group (Ken & Kellie McCord)

Sunnydale/Vis Collaborative (Sonya Brunswick)





# BIG ART loop

**100 large-scale sculptures. 34 miles of art. Free for everyone.**

Big Art Loop is the **largest urban sculpture trail in the world** — a public art initiative bringing **ambitious, large-scale sculpture into neighborhoods** across San Francisco. We **spark wonder, connect communities, and instill civic pride.**

The Loop is **walkable, bikeable**, and designed to give residents and visitors alike **new reasons to explore the city.**



# Big Art Loop Theory of Change

Big Art Loop is proud to be part of the growing movement bringing renewed energy and vitality to San Francisco's neighborhoods.

## Supporting Artists

Big Art Loop invests directly in artists by placing and paying for the loan of existing large-scale works, with a strong commitment to Bay Area and emerging artists.

## Strengthening Neighborhoods

By bringing ambitious public sculpture into neighborhoods across the city, Big Art Loop drives foot traffic, supports local businesses, and creates shared moments that strengthen the fabric of a community.

## Inviting Exploration

A continuous, citywide art loop encourages people to explore beyond familiar routes, discover new favorite places, and experience San Francisco with fresh eyes.



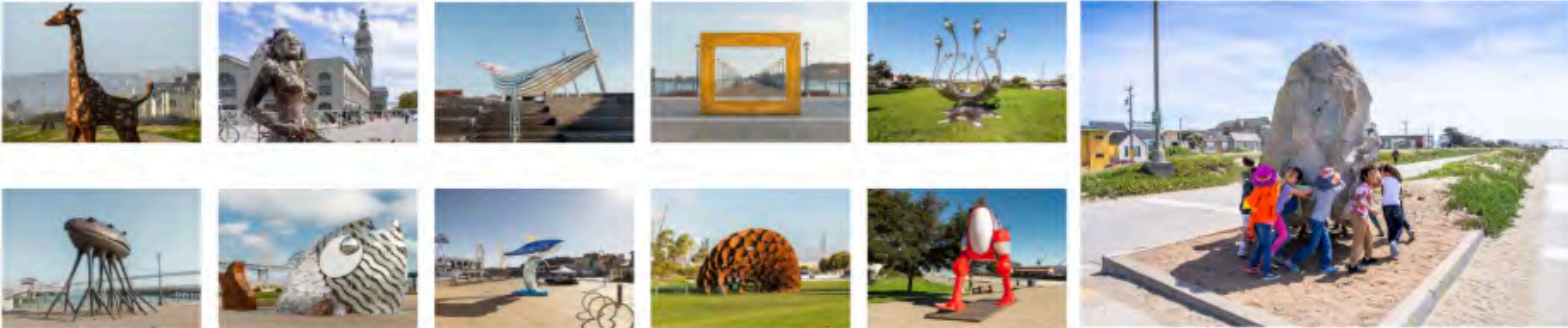
**"Creative placemaking animates public and private spaces, rejuvenates structures and streetscapes, improves local business viability and public safety, and brings diverse people together to celebrate, inspire, and be inspired."**

National Endowment for the Arts

# Our Progress & Impact

>20 Temporary Installations

Community Impact



Launch with Mayor Lurie

25+ Activations





# THANK YOU

QUESTIONS: [INFO@BUILDING180.COM](mailto:INFO@BUILDING180.COM)