

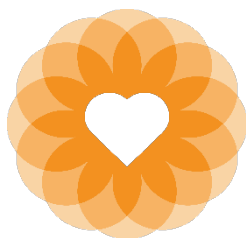


San Francisco Health Network
Laguna Honda Hospital
and Rehabilitation Center

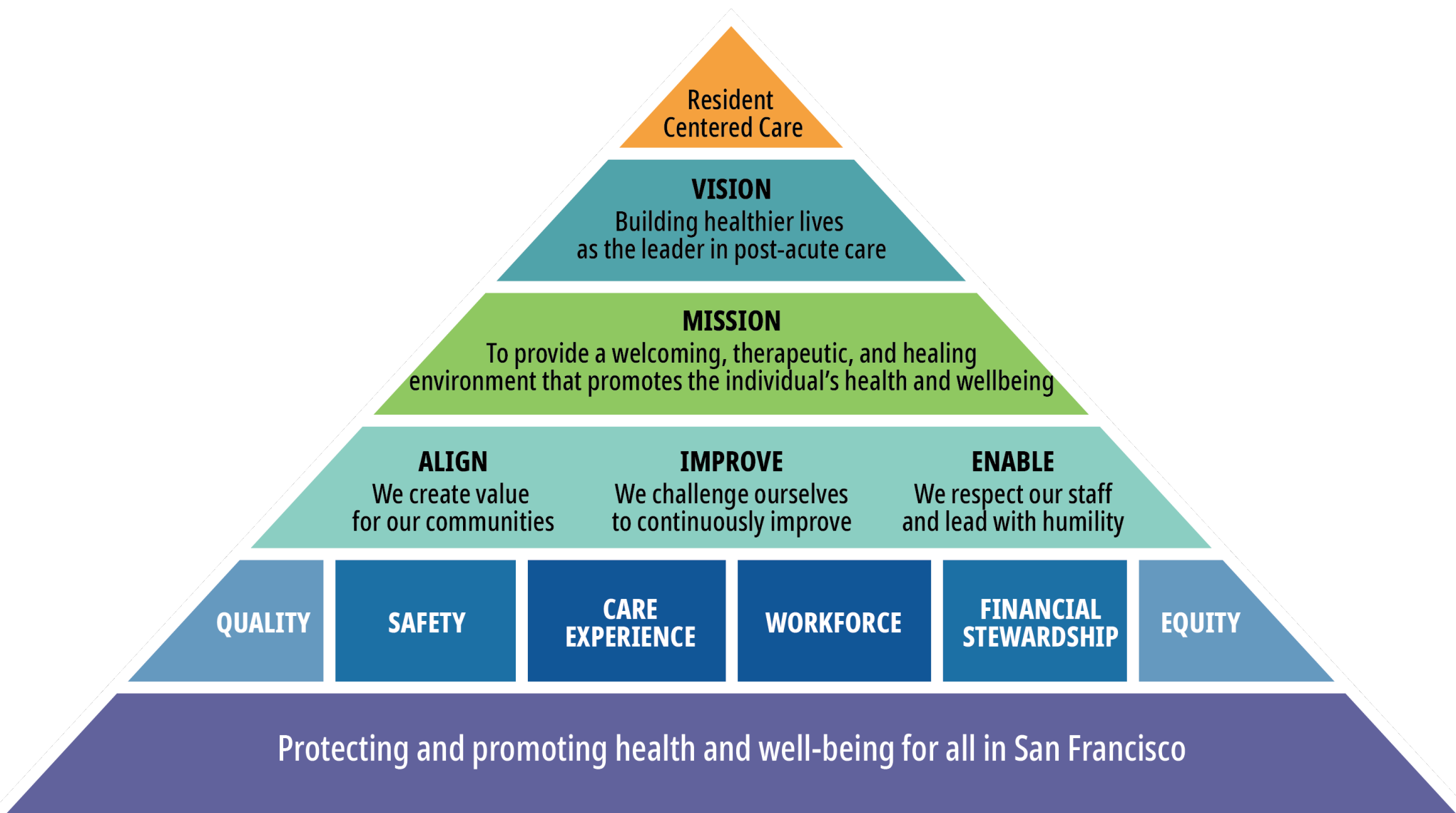
Laguna Honda Hospital Executive Team Report

Michael T. Phillips, MHA, FACHE
January 11, 2022





San Francisco Health Network Laguna Honda Hospital and Rehabilitation Center



JANUARY 2021 Updates

SAFETY

Pages 4 to 9

- COVID-19 Update
- Responding to the Omicron Surge at Laguna Honda
- COVID-19 Vaccines and Booster

QUALITY

Page 10

- Plan of Correction Highlights – Overdose Prevention and Supporting Residents with Substance Use Disorder (SUD)

CARE EXPERIENCE

Page 11

- State of the Hospital

WORKFORCE

Pages 12 to 14

- Employee of the Month Recognition for November: Linda Hitomi
- Employee of the Month Recognition for December: Erlinda Concepcion
- Medicine Department Announcement: Dr. Meghan Jobson

SAFETY



COVID-19 Cases at Laguna Honda

	Resident	Staff	Total
Total 2020 Cases	46	129	175
Jan 2021	17	36	53
Feb 2021	0	5	5
March 2021	0	1	1
April 2021	0	2	2
May 2021	0	1	1
June 2021	0	2	2
July 2021	0	21	21
August 2021	0	17	17
September 2021	0	3	3
October 2021	6	5	11
November 2021	0	3	3
December 2021	9	62	71
January 2022	7	61	68
Total	85	348	433

Data as of 1/7/2022



SAFETY



COVID-19 Cases at Laguna Honda

	Total	Active	Recovered	Deaths
Staff	348	87	261	0
Resident	85	13	72	6

Data as of 1/7/2022



SAFETY



Responding to the Omicron Surge at Laguna Honda

- **Increased Testing** – Residents and staff now tested twice weekly through regular screening testing.
- **Increased PPE** – Staff now wearing fit-tested respirators in the hospital building at all times. Visitors now wearing universal respirators in the hospital building at all times. Float staff and staff working on “Amber Level” neighborhoods continue to wear fit-tested respirators and eye protection.
- **COVID-19 Treatments** – Providing antibody treatments to eligible residents who test positive for COVID-19.



SAFETY



Responding to the Omicron Surge at Laguna Honda

- **Expanding COVID-19 Unit** – Re-opening second wing of South 5 in preparation for increased cases during surge.
- **Temporary Pause on Resident Out On Pass.**
- **Temporary Health Order Impacting Visitation for all San Francisco Skilled Nursing Facilities** – Visitors tested upon entry and residents limited to two visitors daily. The Health Order expires on January 31, 2022.



SAFETY



COVID-19 Vaccine Boosters

- We are proud of our high vaccination and booster rates.
- **As of January 7, 2022, 74% of all staff and 84% of all residents (eligible and not eligible) have received their booster.**
- Laguna Honda has boosters available daily for residents and staff.
- To increase booster rates, Laguna Honda offered roving vaccines, small incentives, and organized a communications campaign.
- The State requirement for booster doses for healthcare workers went into effect on December 22, 2021, and the deadline for booster-eligible covered workers to receive their booster is February 1, 2022, or within 15 days of becoming eligible.



SAFETY



COVID-19 Vaccines and Boosters

	Total Fully Vaccinated	Percentage Fully Vaccinated	Total Boosted	Percentage Boosted*
Staff	1,829	100%	1,353	74%
Resident	648	93%	585	84%

Data as of 1/7/2022

**Percentages are of all staff and residents, including those not yet eligible.*



QUALITY



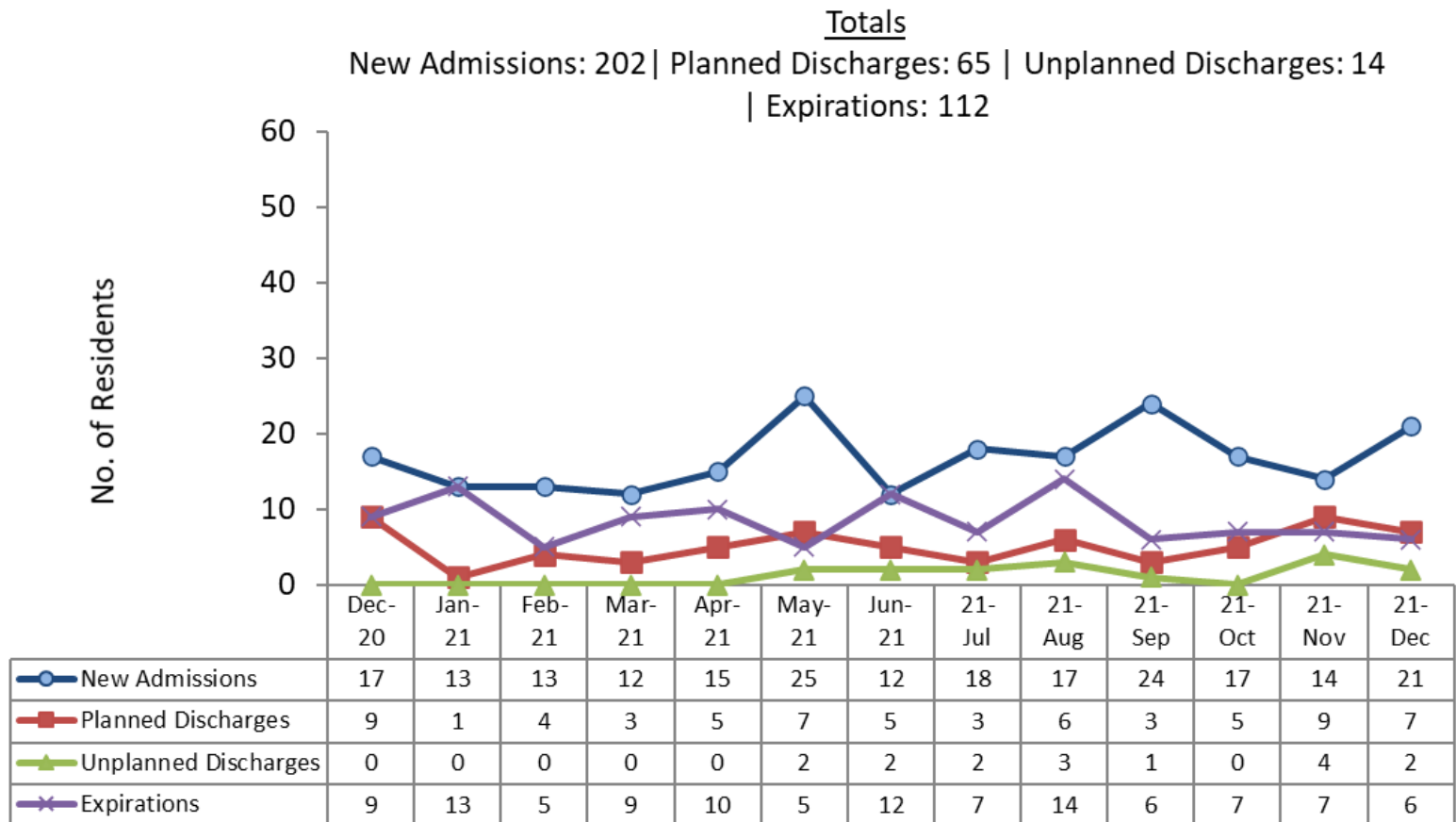
Plan of Correction Highlights – Overdose Prevention and Supporting Residents with Substance Use Disorder (SUD)

- To reduce overdose risk, LHH will make the opioid overdose reversal medicine naloxone available to residents at risk for opioid use disorder.
- Psychiatry is implementing a low-barrier support group for residents with a history of SUD. The group will cover a variety of topics related to residents' psychosocial wellbeing, including concerns/questions around substance use. All residents can attend, and no referrals are needed.
- Medication-assisted treatment (MAT) is the use of medications, in combination with counseling and behavioral therapies, to provide a “whole-patient” approach to the treatment of substance use disorders. Psychiatry will review the medical records of all identified residents and ensure MAT has been offered to those with appropriate indication.



CARE EXPERIENCE

State of the Hospital – Admissions, Discharges, and Expirations



WORKFORCE



Employee of the Month Recognition for November: Linda Hitomi

- For over 19 years, Linda has been a leader in the Social Services Department. Linda leads with integrity while fostering a collaborative inclusive team.
- For those fortunate to be in her care, she helps them strengthen their foundations and build the life they envision.
- Her peers appreciate her professionalism, leadership skills, and respectful attitude towards residents and staff.



WORKFORCE



Employee of the Month Recognition for December: Erlinda Concepcion

- Erlinda Concepcion, MDS (Minimum Data Set) Charge Nurse ensures all assessments are completed accurately, timely, and in compliance with CMS regulations.
- Erlinda is known by colleagues as the heartbeat of the MDS team and as a gracious and collaborative leader.
- She supports plans of care, CMS compliance, case mix, Medicare payments, Five Star ratings, Quality Measures, Medicaid Treatment Authorization, and more.



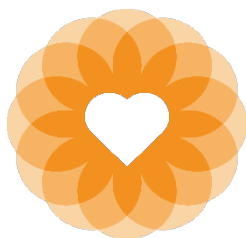
WORKFORCE



Medicine Department Announcement: Dr. Meghan Jobson

- LHH welcomes Dr. Meghan Jobson in the role of Senior Physician.
- Dr. Jobson is assigned to South 3 and provides support for residents who have a terminal disease or chronic and progressive illnesses.
- Dr. Jobson received her medical degree from the University of North Carolina and has since completed a residency in internal medicine at UCSF and fellowships in palliative care and hospice medicine, integrative medicine, and glomerulonephritis. She has worked at the VA in the emergency room.
- Dr. Jobson lead the SF General COVID Outpatient Support Team and the UCSF COVID Long-Haul Support Group.





San Francisco Health Network Laguna Honda Hospital and Rehabilitation Center



PHOTO CREDIT: HEIDI ALLEZHAUSER PHOTOGRAPHY