



Population Health Division Updates

September 15, 2025

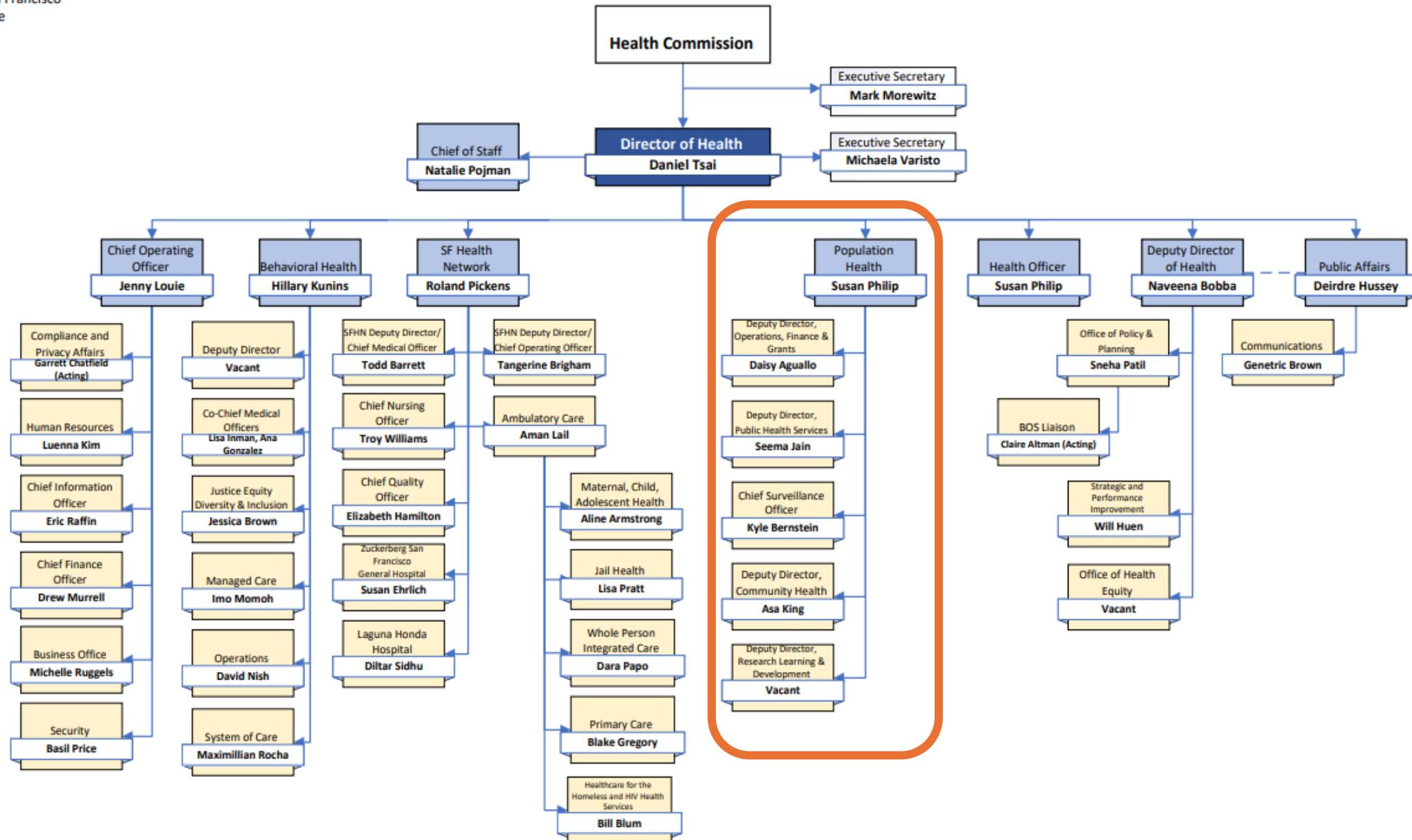
SUSAN PHILIP, MD, MPH

DIRECTOR, POPULATION HEALTH DIVISION

SAN FRANCISCO DEPARTMENT OF PUBLIC HEALTH



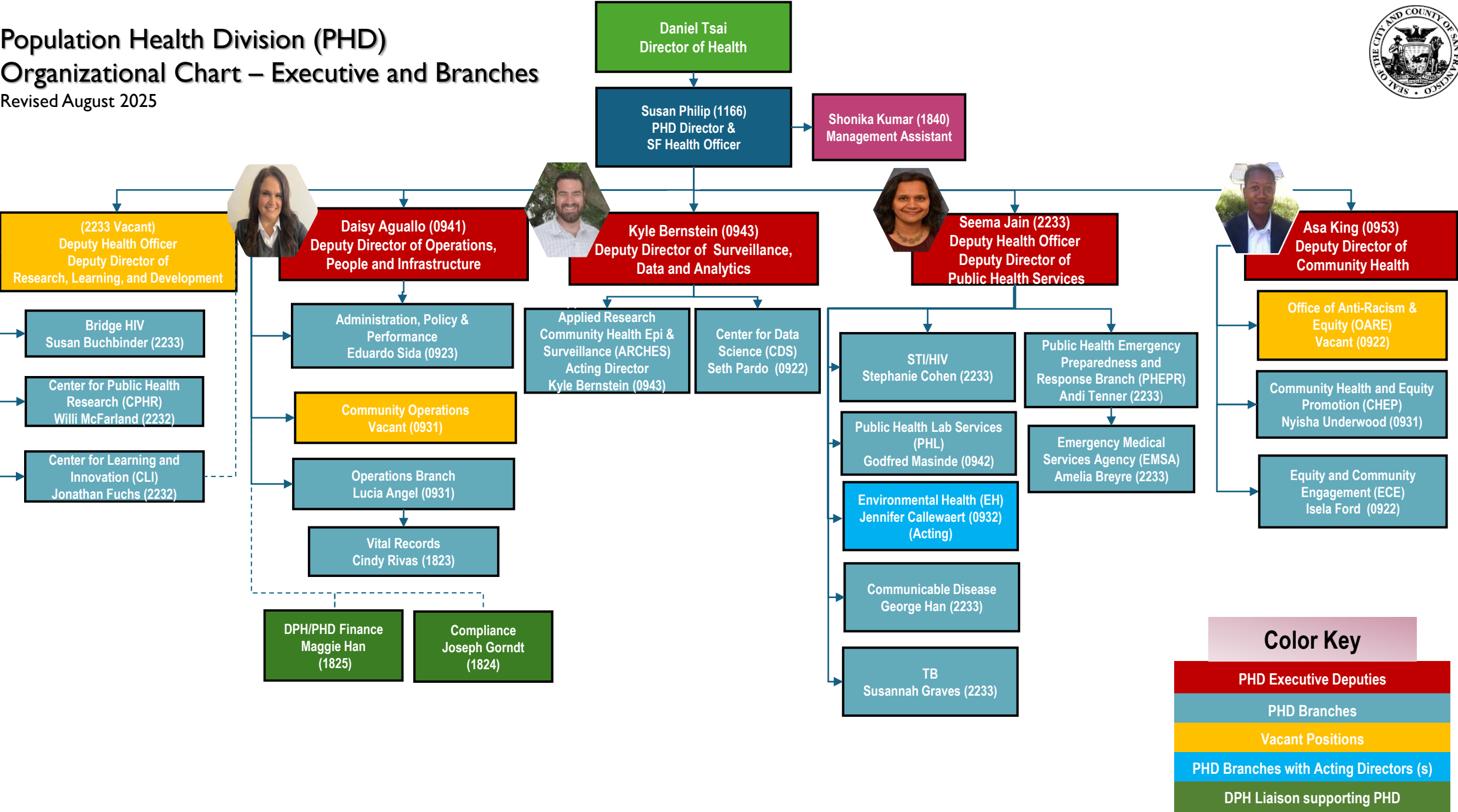
POPULATION HEALTH DIVISION
SAN FRANCISCO DEPARTMENT OF PUBLIC HEALTH



Population Health Division (PHD)

Organizational Chart – Executive and Branches

Revised August 2025



PHD's Work is Essential for Public Health

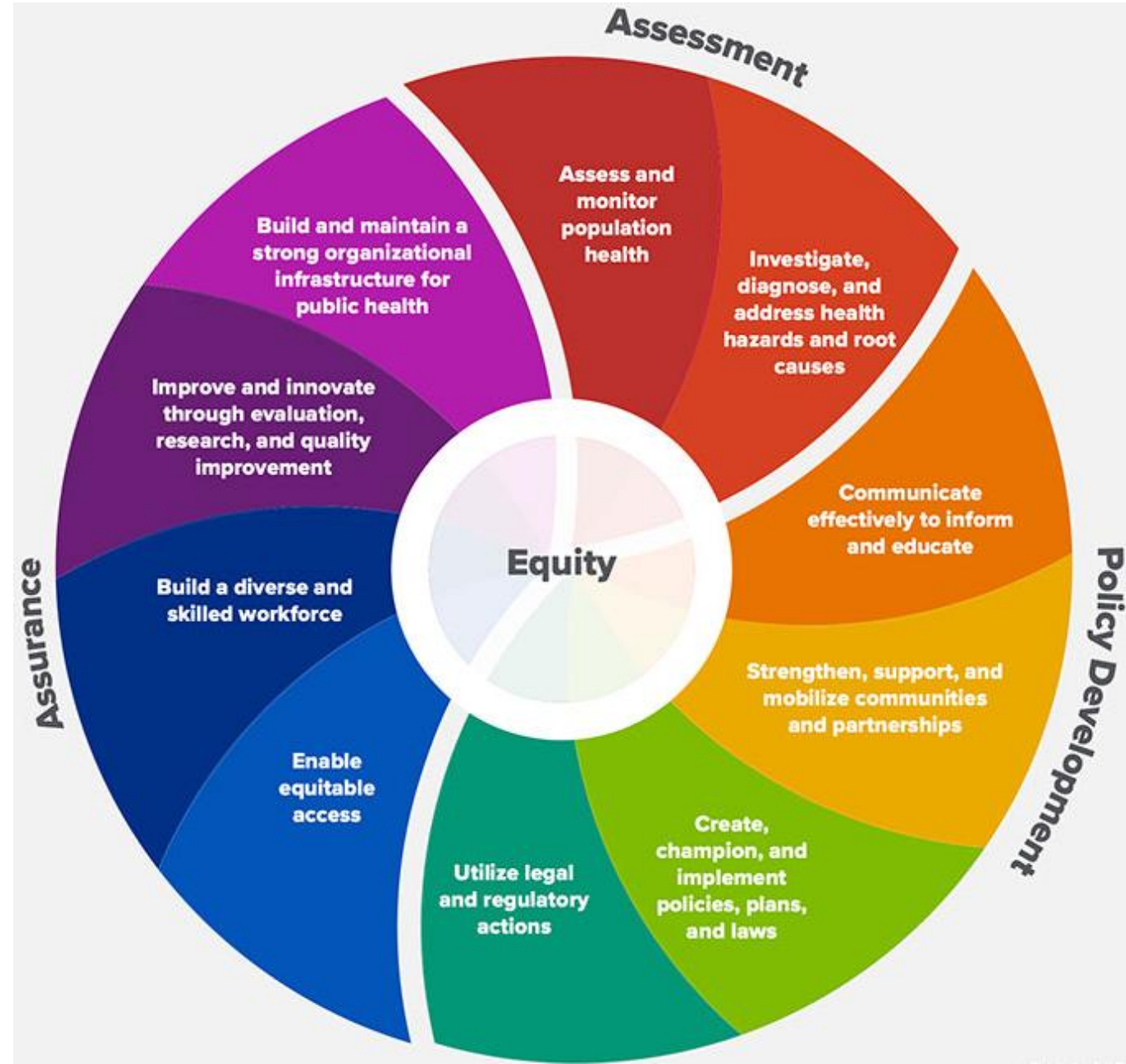
Population Health Division Roles

Deliver Core Public
Health Functions and Expertise
Citywide

Advise on Citywide Public Health
Policies

Advance Public Health Research and
Innovation

Lead Public Health Accreditation for
DPH





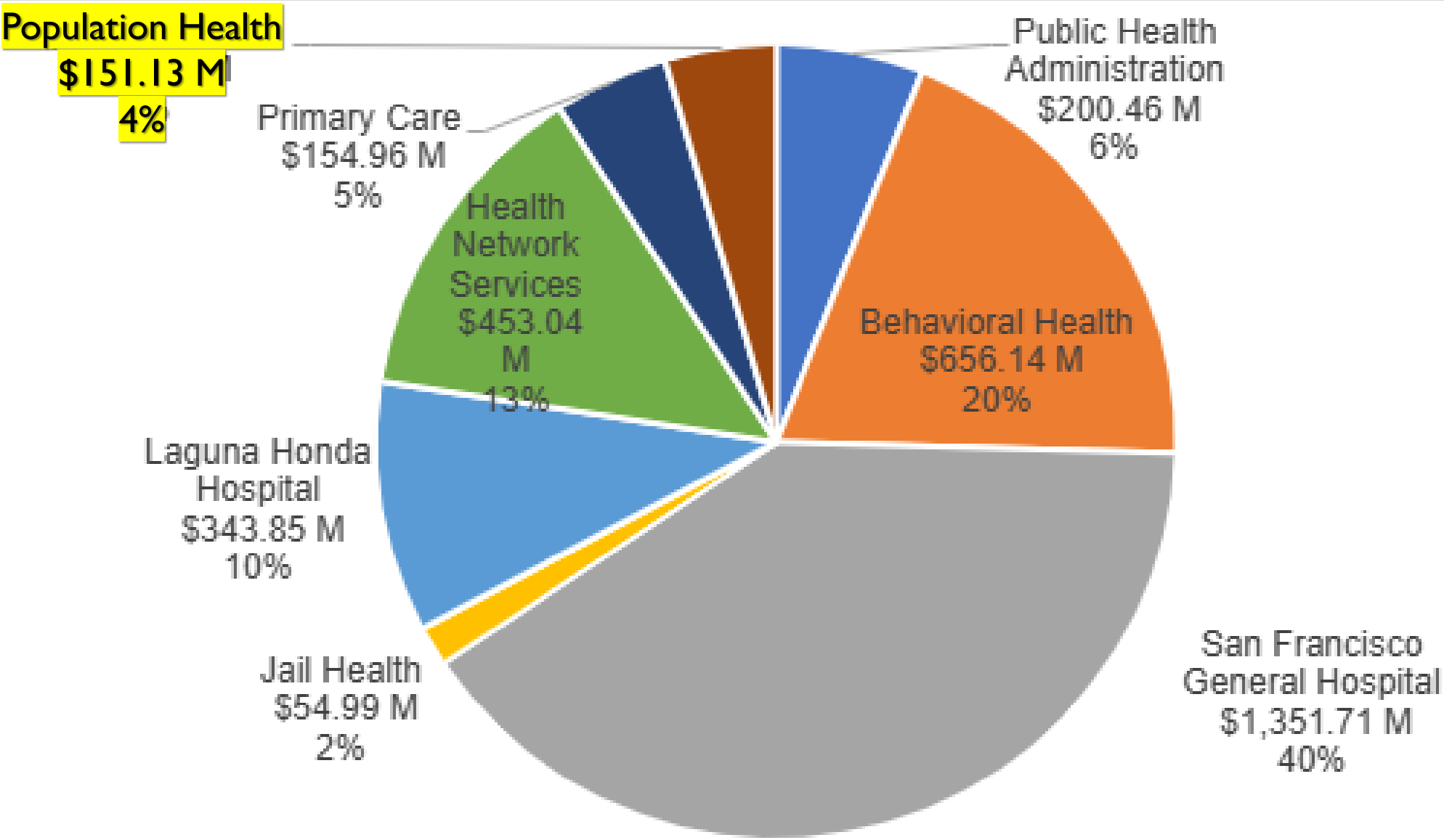
Operations, People, and Infrastructure Group

Overall Priorities of PHD

- Reducing Health Disparities
- Preparing for Public Health Threats
- Strengthening Our Data Systems and Analytic Workforce
- Continuing To Support Mandated Core Public Health Activities

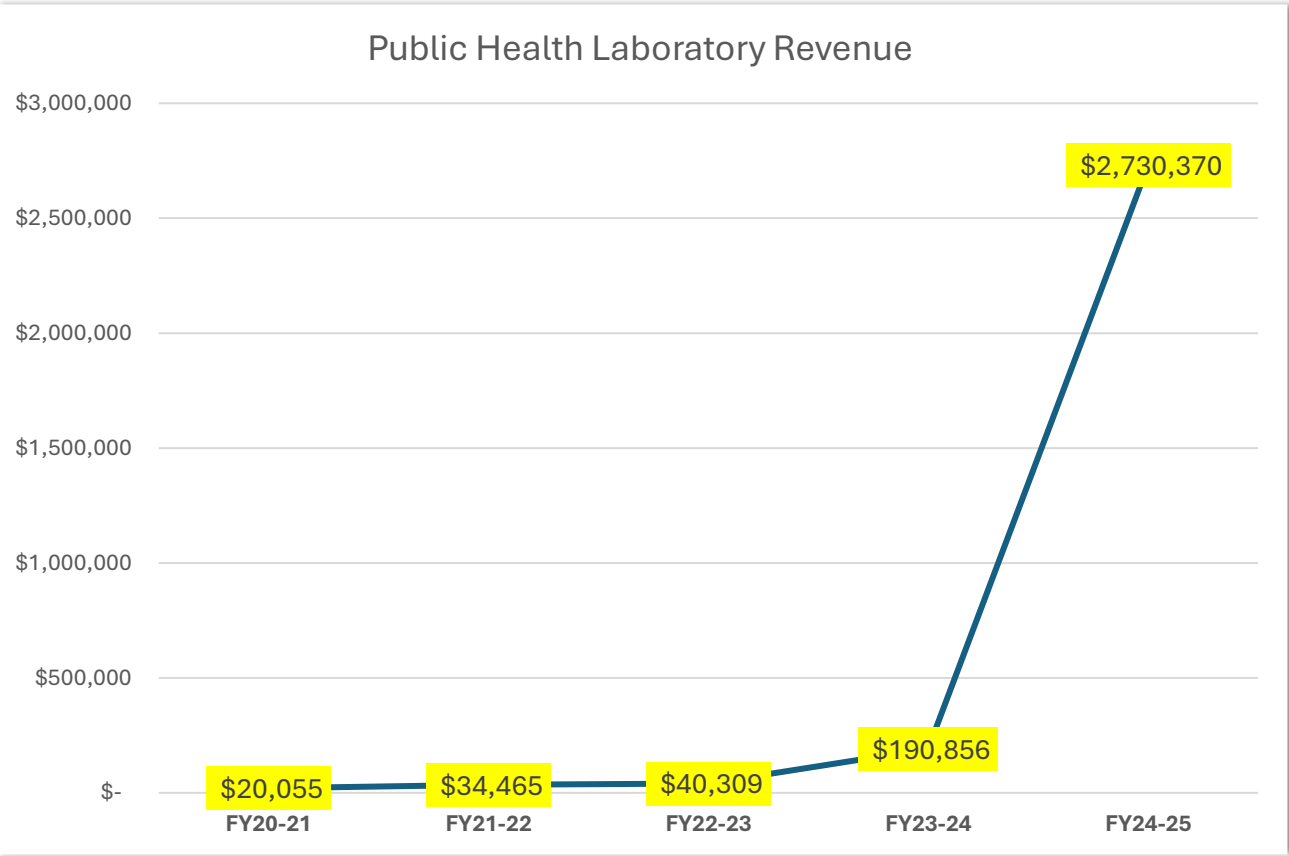


DPH Budget FY 2025-26



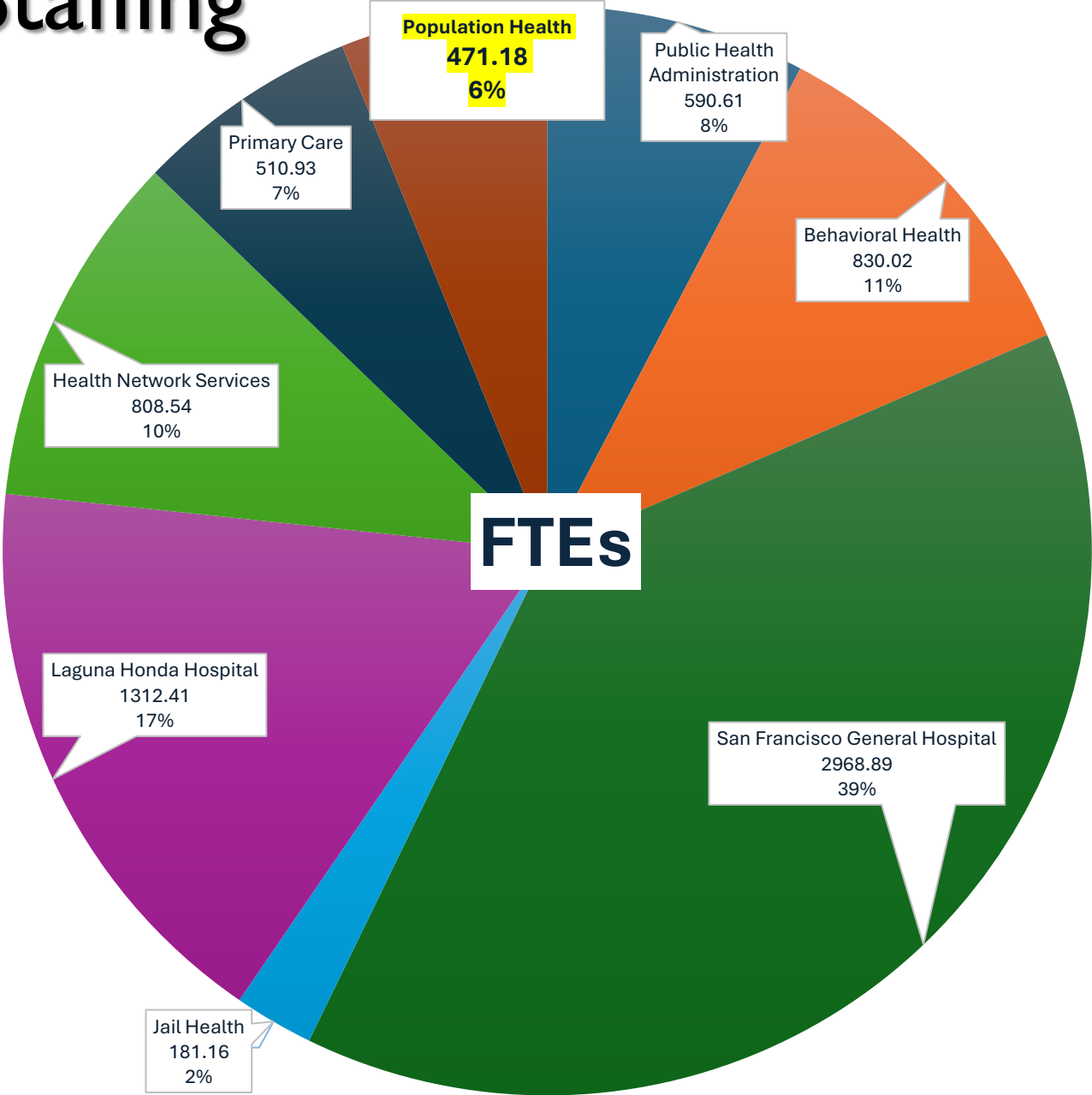
Public Health Lab Billing/Revenue Project

- In 2022 the Public Health Lab (PHL) transitioned to Epic.
- In November 2023 the PHD Project Management team was tasked to optimize the billing process.
- In August 2024 PHL began actively billing Medi-Cal managed care plans.



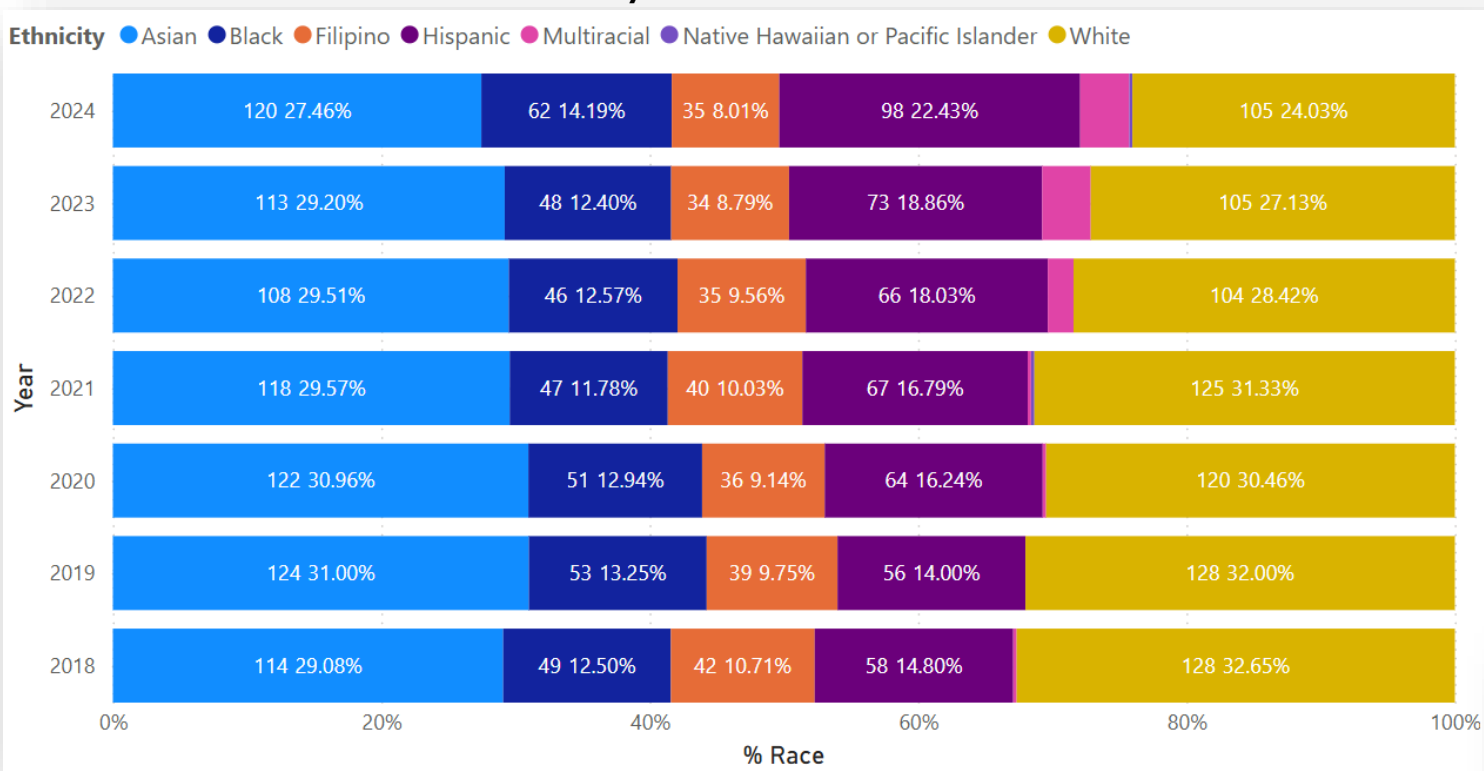
	FY20-21	FY21-22	FY22-23	FY23-24	FY24-25
Amount	\$ 20,055	\$ 34,465	\$ 40,309	\$ 190,856	\$ 2,730,370

Population Health Staffing FY 2025-26

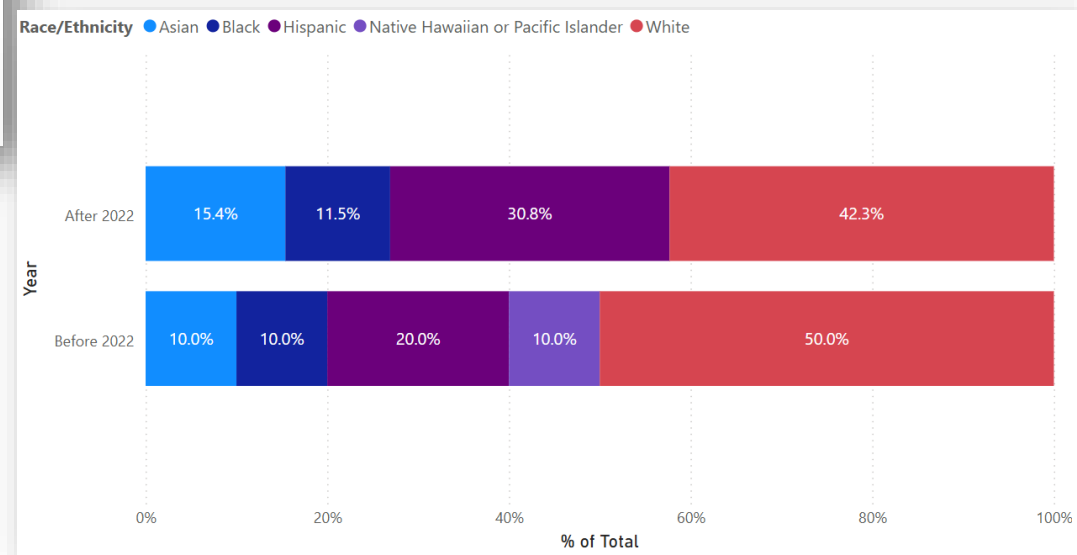


Diversifying PHD Workforce, 2018-2024

% Race by Year at PHD



New Hire into Leadership Positions, by Race/Ethnicity



SFDPH HR Data, 2024 <5 staff who are Native American-identified, and thus, data not shown

Community Health Improvement Plan (CHIP)

Timeline

- Community Health Improvement Plan (CHIP)
 - Kickoff in Fall 2025
 - Completed Plan by Winter 2025-2026

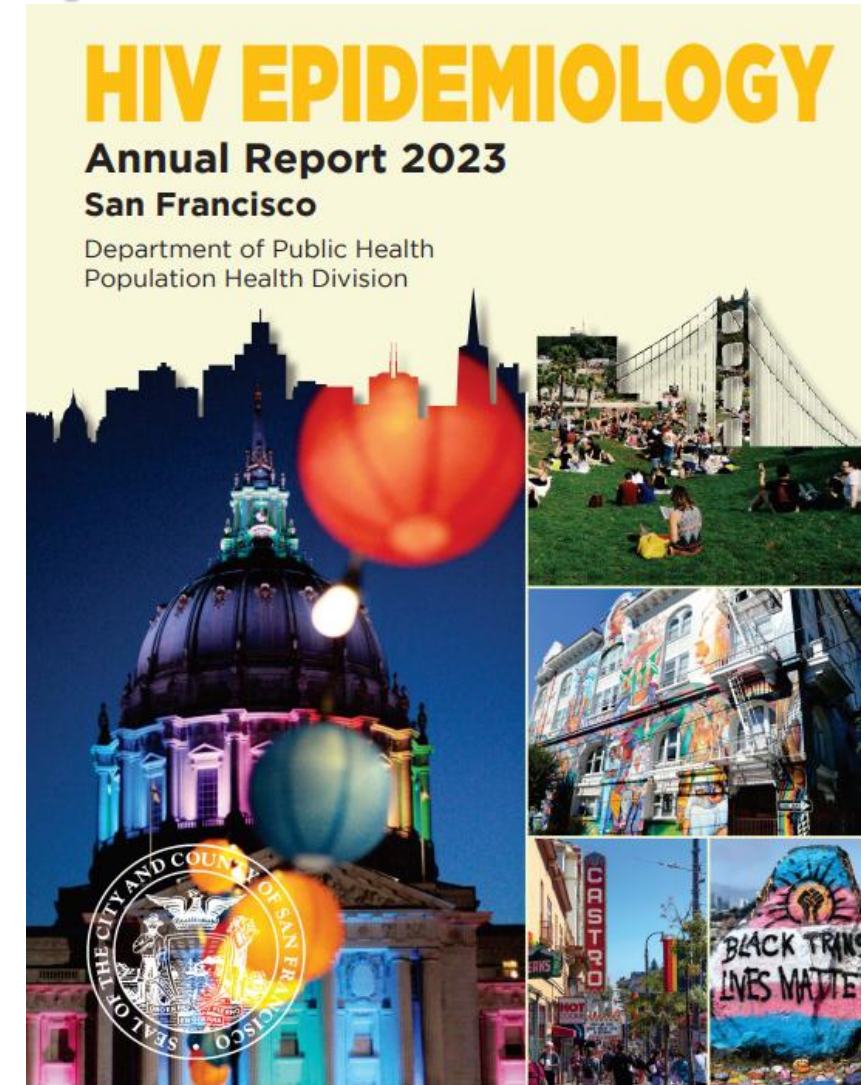


- Provides an opportunity for SF to create alignment across the City's many health improvement efforts
- Opportunity to partner with Community to identify health priorities, develop strategies, implement plans, share expertise and resources, and track progress

Focus on Data:

PHD Has A Robust Data & Analytic Workforce

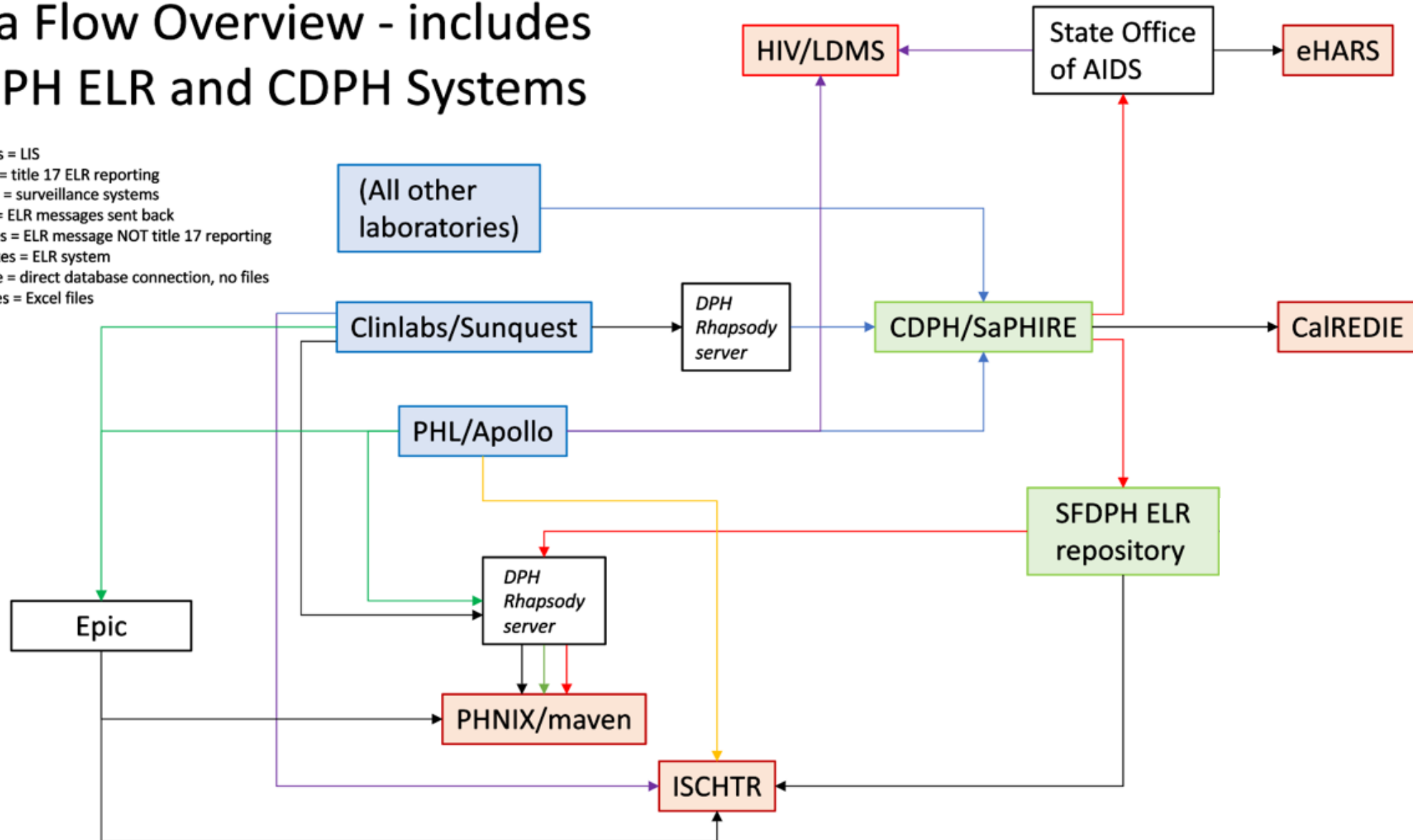
- Strong connections with DPH IT, Data SF
- Support of City and DPH wide initiatives
- Application of state of the art approaches to describing and understanding morbidity and mortality in San Francisco



Focus on Data: High Complexity

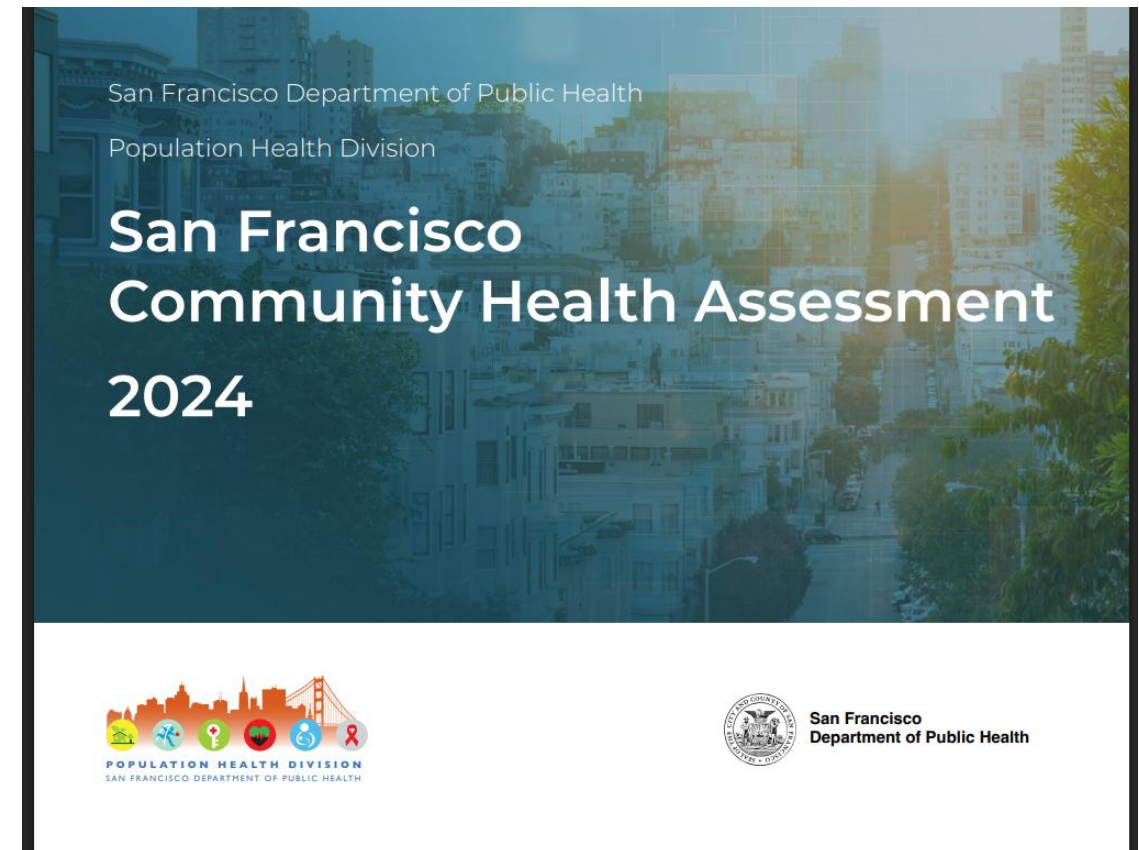
Data Flow Overview - includes SFDPH ELR and CDPH Systems

Blue boxes = LIS
Blue lines = title 17 ELR reporting
Red boxes = surveillance systems
Red lines = ELR messages sent back
Green lines = ELR message NOT title 17 reporting
Green boxes = ELR system
Yellow line = direct database connection, no files
Purple lines = Excel files



Data Opportunities

- Refocus on community epidemiology
- Strengthen understanding of non-infectious conditions

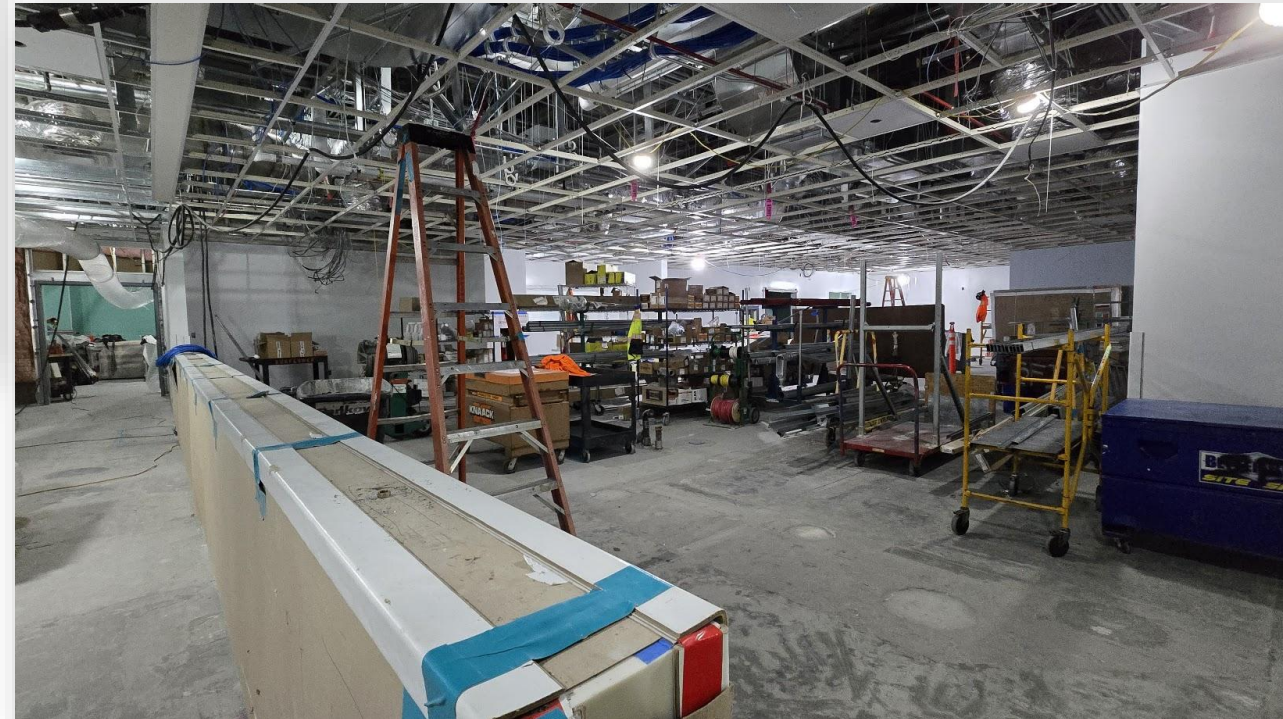


Celebrating Successes and Growth



AITC Ribbon Cutting
27 Van Ness
June 2025

New Public Health Lab
ZSFGH, building 5
May 2026





THANK YOU!

Susan.Philip@sfdph.org

