



San Francisco Adult Probation Department

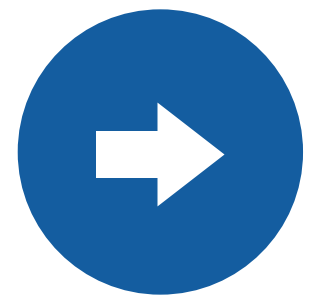
# PUBLIC BUDGET MEETING FISCAL YEAR 2026-27 & 2027-28

February 11, 2026  
Cristel M. Tullock  
Chief Probation Officer

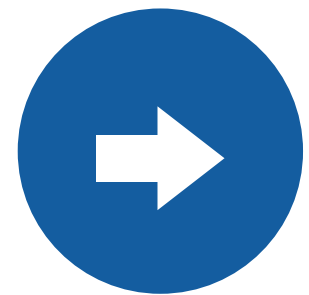


# Mission & Objectives

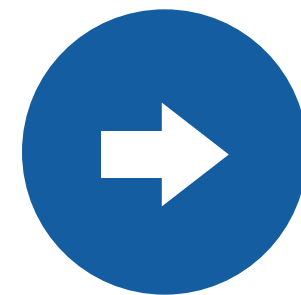
Protect and serve the community, further justice, inspire change, and prioritize racial equity so that all people may thrive.



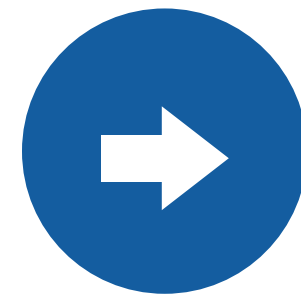
Engage with all victims.



Maintain low recidivism rate.



Support the Superior Courts through mandated functions.



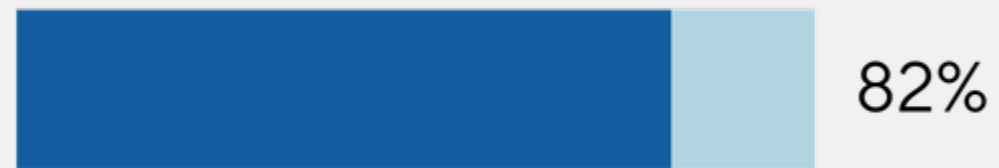
Provide therapeutic and holistic reentry support and services.



# APD Performance Measure Highlights FY 2024 -25

## Successful Completion Rates

Felony  
Probation



82%

Mandatory  
Supervision



100%

Post-Release  
Community  
Supervision



83%

*Rates continue to exceed performance targets.*

## Recidivism

- Active clients with a new conviction: 2%
- Revocation/return to prison rate: 0.5%  
(compared to statewide rate of 3.0%)

## Services

- Clients receiving housing services: 1,160
- Number of clients housed per night: 335
- Unique clients accessing CASC: 2,770
- Annual job placements: 319

## Court Reports and Assessments

- Court reports: 3,429
- COMPAS Assessments: 1,311

# Core Services

## ► Investigations

Prepares evidence-based court reports to inform pre-sentence and post-sentence proceedings and client progress. Ensures crime victims have rights to restitution. Oversees compliance with Proposition 63 to ensure individuals legally designated as prohibited persons do not own or possess firearms or ammunition; processes bench warrants; manages department electronic monitoring program.

## ► Reentry

Large portfolio of housing and support programs, including operations at the Community Assessment and Services Center (CASC), a one-stop, multi-service reentry center that specializes in working with justice-involved clients.

## ► Supervision

**Intensive:** Intensive support to clients released from state prison on post-release community supervision, clients sentenced to mandatory supervision, and clients convicted of sex offenses.

**Community Success:** Supervision services, wrap-around care, and referral to community-based treatment services.

**Community Engagement:** Supervises clients convicted of domestic violence offenses. Supports community engagement programs, including Mobile Probation.

**Standards and Compliance:** Identifies and implements best practices related to workload, staff development, and professional standards across functional areas including report writing, caseload standards, client engagement, and onboarding. Assigns Court Officers to seven courts. Works with partner agencies to provide treatment services to clients assigned to courts. Prepares monthly court progress reports. Coordinates, tracks, and reports all mandatory training standards for sworn staff. Maintains department records.

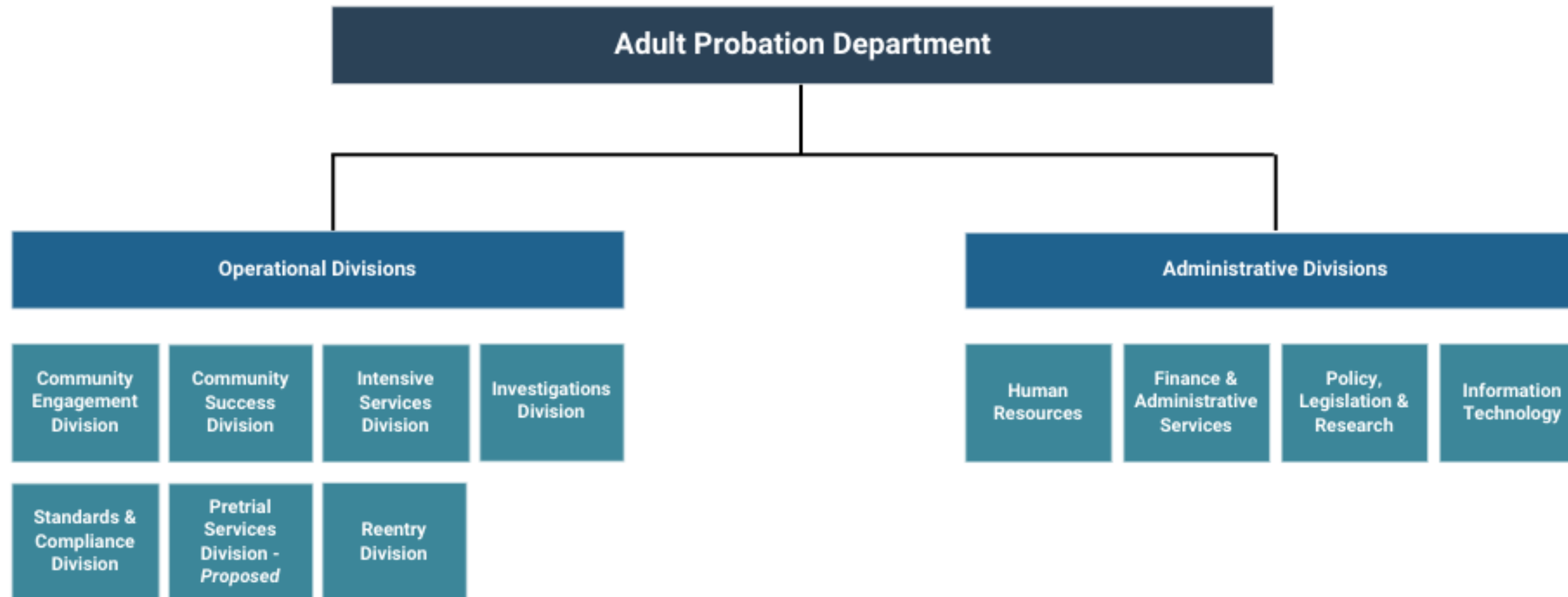
## ► Administration, Policy, Research, IT, and Finance

IT; applied research; legislation and policy services; budget and finance; grants and contract administration; personnel and payroll services; facilities and fleet management services; and management of information services.



# **San Francisco Adult Probation Department**

## Department Overview - Divisions/Core Services



# Fiscal Years 2026 -27 and 2027-28 Mayor's Outlook/ Budget Instructions

The Mayor's Office is projecting a \$936M General Fund (GF) deficit over the next two fiscal years. Departments must make \$400 M GF cuts.

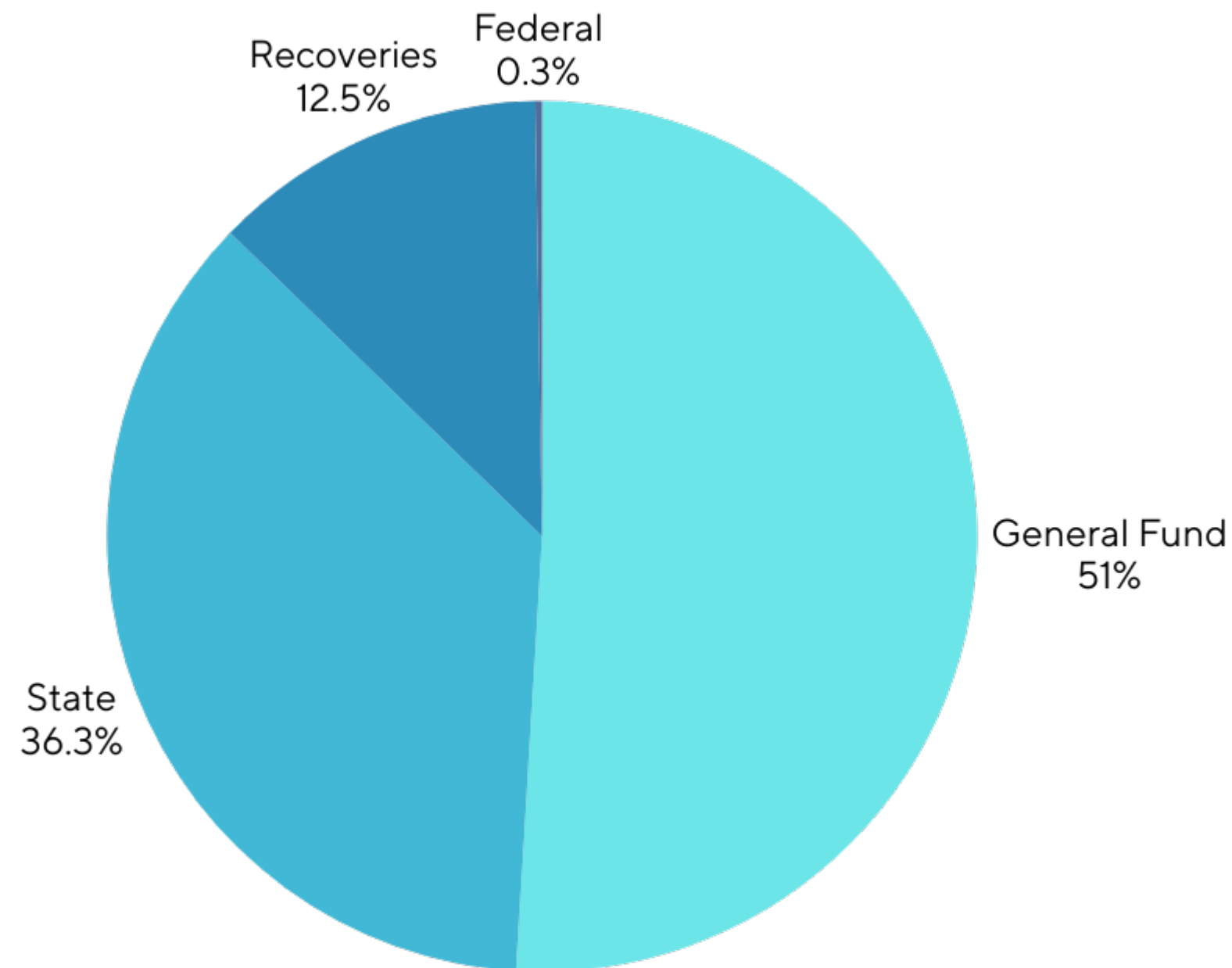
## Mayor's Budget Priorities:

- Ensure safe and clean streets
- Make the city more affordable for families, strengthening our social safety net
- Stabilize reliable public transit
- Deliver excellent core services
- Strengthen City's economy

## Mayor's Budget Instructions:

- Eliminate all discretionary programs
- Restructure departments around current staffing
- Review contracted services and non-personnel to identify savings
- Reduce citywide work orders
- Identify redundancy and shared administrative costs
- Identify investments that reduce long-term costs

# FY 2026 -27 Revenues



Revenues (\$)	FY 2026 -27 Proposed
General Fund	31,890,900
State	22,729,832
Recoveries	7,802,736
Federal	160,729
Other *	500

*\* Other represents 0.001% of revenues and therefore does not display on the pie chart.*

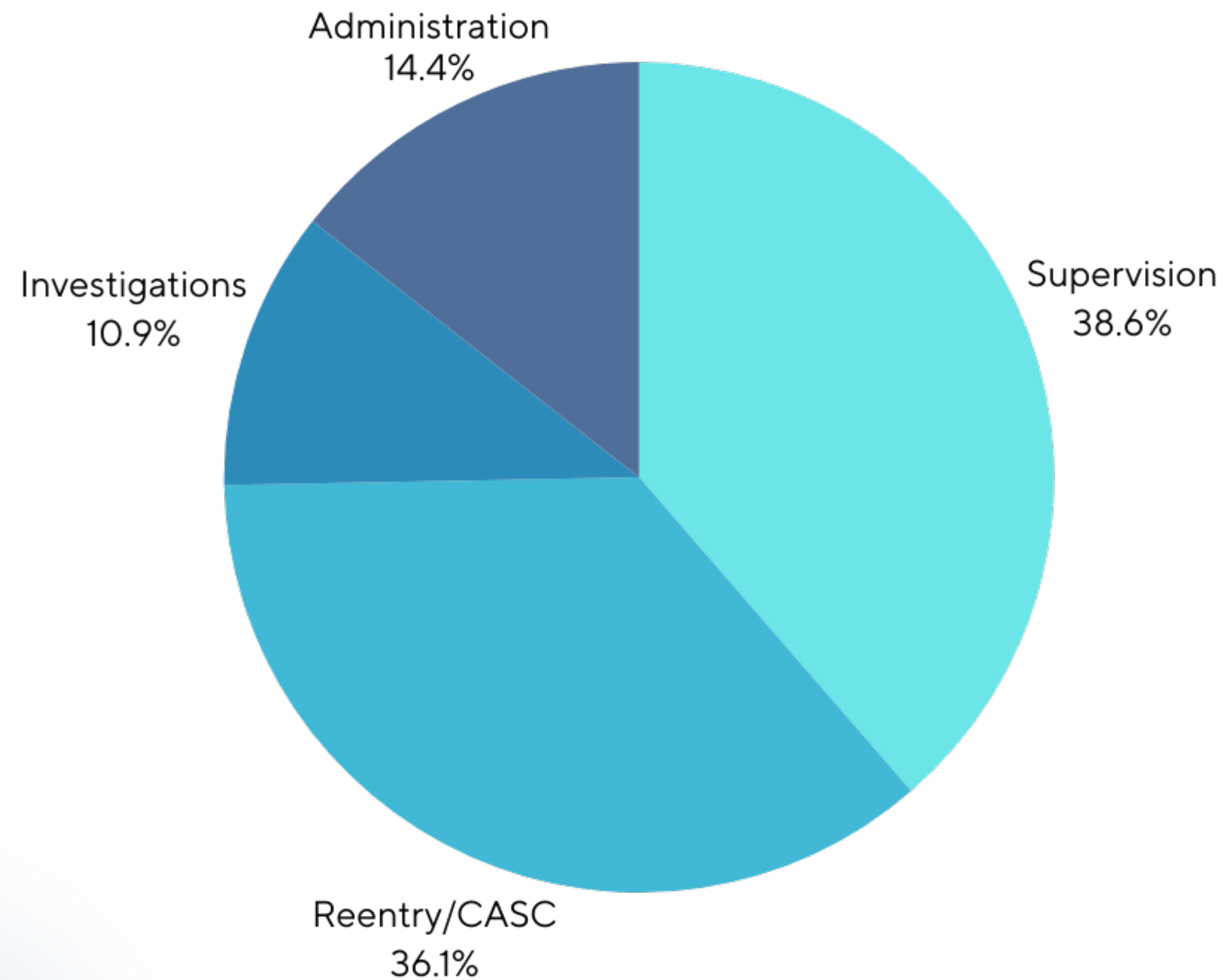
# APD Base Budget

	FY 2025 -26	FY 2026 -27 Base	FY 2027 -28 Base
City Grants	17,456,172	16,974,391	17,950,066
Salaries	20,494,699	21,385,717	22,945,278
Fringes	10,043,467	11,682,382	12,356,336
Materials and Supplies	682,572	173,600	77,931
Non-Personnel	6,748,340	6,680,228	6,687,456
Programmatic Projects	3,144,935	2,739,664	3,336,854
Work Orders	3,055,373	2,948,715	2,948,715
<b>Total</b>	<b>61,625,558</b>	<b>62,584,697</b>	<b>66,302,636</b>
Authorized Positions (FTE)	154.37	154.33	153.75
Attrition Savings (FTE)	-9.88	-9.16	-9.20
Attrition Savings (\$)	(1,882,812)	(1,836,629)	(1,867,318)

## Major changes:

- Reduction in housing and supportive services funding in FY 2026-27.
- Increase in Salaries/Fringes due to COLAs and fringes.
- Reduction in materials and supplies due to one-time state grant funding.

# FY 2026 -27 Expenditures by Core Services



Core Service (\$)	FY 2026 -27 Proposed	FTE
Supervision	24,045,264	89
Reentry/CASC	22,460,874	7
Investigations	6,772,640	26
Administration	8,975,712	24

# Fiscal Year 2026 -27 Priorities and Initiatives



- Maintain housing and supportive services
- Expand staff professional development
- Continue to reform and modernize the department by leveraging technology
- Develop and Implement Pre-Trial Program

# Next Steps





# Public Comments

## **Submit Written Public Comments by February 17, 2026**

Members of the public may submit comments:

- via email to [APDFinance@sfgov.org](mailto:APDFinance@sfgov.org)
- by mail to SF Adult Probation Department, 945 Bryant Street, San Francisco, CA 94103, Attention: Finance

**Thank you**