



**Ronald Alameida, Deputy Director & City Architect** | Building Design & Construction  
ronald.alameida@sfdpw.org | T. 628.271.3075 | 49 South Van Ness Ave. Suite 1600, San Francisco, CA 94103

# The Earthquake Safety and Emergency Response Bond Program 2010, 2014 & 2020

## Quarterly Status Report

January through March 2022



*Fireboat Station 35 at Pier 22½, Ribbon Cutting ceremony 3/10/2022*

Prepared for the:

- Office of the Chief Medical Examiner
- Department of Emergency Management
- San Francisco Fire Department
- San Francisco Police Department
- Public Utilities Commission
- Recreation and Parks Department

Submitted by

Charles Higuera, FAIA

Program Manager

# Earthquake Safety and Emergency Response Bond Program

---

## (ESER 2010, 2014 & 2020)

### Table of Contents

Executive Summary.....	3
Program Summary and Status .....	5
Public Safety Building (ESER 2010).....	5
Neighborhood Fire Stations (ESER 2010).....	7
Neighborhood Fire Stations (ESER 2014).....	11
Neighborhood Fire Stations & Support Facilities (ESER 2020) .....	14
Emergency Firefighting Water System (ESER 2010, 2014, 2020) .....	17
Office of the Chief Medical Examiner (ESER 2014) .....	18
Traffic Company & Forensic Services Division (ESER 2014) .....	20
Police Facilities (ESER 2014).....	22
Police Facilities (ESER 2020).....	23
Disaster Response Facilities (ESER 2020).....	27
9-1-1 Call Center (ESER 2020) .....	29
Budget, Funding and Expenditures.....	30
ESER 2010.....	30
ESER 2014.....	31
ESER 2020.....	32
Attachments.....	33
Attachment 1 – Contact Information.....	33
Attachment 2 – Schedule.....	34

# Earthquake Safety and Emergency Response Bond Program

---

## (ESER 2010, 2014 & 2020)

### Executive Summary

The \$412.3 million **Earthquake Safety and Emergency Response 2010 (ESER 2010) Bond Program** consists of three components: **Public Safety Building, Neighborhood Fire Stations & Support Facilities**, and **Auxiliary Water Supply System**.

The \$400 million **Earthquake Safety and Emergency Response 2014 (ESER 2014) Bond Program** consists of five components: **Office of the Chief Medical Examiner, Traffic Company & Forensic Services Division, Neighborhood Fire Stations & Support Facilities, Emergency Firefighting Water System**, and **Police Facilities**.

The \$628.5 million **Earthquake Safety and Emergency Response 2020 (ESER 2020) Bond Program** consists of five components: **Emergency Firefighting Water System, Neighborhood Fire Stations & Support Facilities, District Police Station & Support Facilities, Disaster Response Facilities**, and **9-1-1 Call Center**.

The *Office of the Chief Medical Examiner* project was inaugurated in November 2017 and is fully operational. The project was awarded LEED Gold certification in June 2021.

The *Traffic Company & Forensic Services Division (TCFSD)* construction has been completed and only minor post-move-in adjustments have been requested by some occupants. Temporary Certificate of Occupancy (TCO) was granted on July 22, 2021, Substantial Completion was issued on August 27, 2021, 25 days ahead of schedule, and DBI issued the Certificate of Final Completion and Occupancy (CFCO) on January 6, 2022. The FSD (Crime Lab) moved into the facility on January 14th and February 18th.

Under *Neighborhood Fire Stations* component, ESER 2014, the floating *Fireboat Station 35* achieved Substantial Completion on February 28, 2022. Under the *Focused Scope Program*, the generator replacement project at Station 2 is 75% complete. Under ESER 2020, initial planning work was suspended at the request of the Fire Department on the Fire Training Facility. The MOU between Public Works and the Fire Department, submitted to the Fire Department in April 2021 is awaiting review comments from the Fire Department.

Under *Police Facilities* component, ESER 2014, *Northern, Taraval, and Richmond Station Renovation Project* was completed in November 2021 and the *Park and Ingleside Station Project* was completed in May 2021. *Bayview and Tenderloin Station MEP Upgrades Project's* anticipated Final Completion is May 2022. Under ESER 2020, the *Police Facilities* component will consist of three selected improvement projects: *Ingleside District Police Station Replacement; Mission District Police Station Structural Improvement*; and the construction of a temporary *Police Surge Facility* to enable the work at the Ingleside site. Planning and

## Earthquake Safety and Emergency Response Bond Program (ESER 2010, 2014 & 2020)

---

conceptual design work began in April 2021 for some of these projects. The Mission District Police Station Structural Improvement will be the first project to begin construction in Summer 2022.

The Public Utilities Commission manages the projects under the *Auxiliary Water Supply System* and the *Emergency Firefighting Water System* components for all three programs. Construction continued on the Pumping Station 2 (WD-2687), Clarendon Supply Pipeline (WD-2861), and 19th Ave Pipeline (2652J) contracts. Construction on the Terry Francois Boulevard/Mission Rock/Warriors Way Pipeline (DB-129.1) started in December 2020 and is expected to be complete in May 2022 subject to COVID-19 restrictions.

The Recreation and Parks Department manages the *Disaster Response Facilities* component under ESER 2020. The project concept plan is moving forward with formal engagement with the Planning Department's Historic Preservation Division and starting the review as it relates to CEQA and historic preservation. Exploratory investigation work has begun on hazardous material surveys as well as geotechnical evaluations and this work is almost complete. The project team will be working on engaging with the various regulatory requirements with the Historic Preservation Commission, Civic Design, Department of Emergency Management (DEM) and the general public over the next several months. We are also re-engaging with the project cost estimator to recast the conceptual cost estimate so that we have an updated cost based on today's construction market. In the coming quarter, the team will also be advertising an RFQ for general contractors who we can consider in a CM/GC contract.

Under ESER 2020, the *9-1-1 Call Center* project is currently with DBI for permit review. The project was submitted to DBI in January 2022. The permit is expected to be approved in April/May 2022; advertisement and bidding will follow.

To date, the ESER 2010 program has received the proceeds of six bond sales totaling \$412,300,000 and in addition has received interest earned with a current total appropriation of \$415,372,929. The ESER 2014 program has received the proceeds of three bond sales totaling \$397,988,157, inclusive of savings from cost of issuance which has been appropriated to the other program components. The ESER 2020 program has received the proceeds of two bond sales, totaling \$167,475,982. ESER 2020 pre-bond expenditures are under review and will be reimbursed to Capital Planning, to occur in Q4 FY2022.

Please refer to the following report for further details or visit the ESER website at [www.sfearthquakesafety.org](http://www.sfearthquakesafety.org) for previously issued reports.

# Earthquake Safety and Emergency Response Bond Program (ESER 2010, 2014 & 2020)

## Program Summary and Status

### Public Safety Building (ESER 2010)



Photo © Tim Griffith, 2015

**Location:** Block 8 in the Mission Bay South Redevelopment Area. The block is bounded by Mission Rock, Third, and China Basin Streets.

**Project Description:** The Public Safety Building (PSB) is meant to provide a new venue for the SFPD Headquarters – effectively the command-and-control administration of the City’s police department – and includes the relocation of Southern District Station and a new Mission Bay Fire Station #4. Included in the project is the reuse of Fire Station #30, which will serve as the Arson Task Force HQ and provide a community meeting room at the ground level. Historic resource consultants have determined that the existing fire station is eligible for the National Register of Historic Places. Consistent with the Mission Bay SEIR Addendum No. 7, Mitigation Measures, Item D.02, this facility will be retained and reused in a manner that preserves its historic integrity. The other components of the project will be designed to be respectful of the historic integrity of the existing fire station.

## Earthquake Safety and Emergency Response Bond Program (ESER 2010, 2014 & 2020)

---

**Project Background:** The functionality of the entire police department in the event of a major catastrophe relies on the ability of the police leadership within police command center headquarters to promptly and properly coordinate public safety services in the city. The district station plays an equally critical role in providing responsive public safety to residents of San Francisco in a timely manner. This station deploys officers 24/7 to the Southern District, who are the first responders to public calls for service, as well they provide support to other first responders including the Fire Department, Medical Examiner, and emergency medical services.

**Project is complete and the facility is occupied.**

**Project Budget:** Project Cost, inclusive of all change orders to date, tracked to within the Total Project Budget of \$243M (GO Bonds and general funds). Project savings have been reallocated to NFS 2010 bond component; any remaining unspent balances will be reviewed for future spending authorization and reallocation.



# Earthquake Safety and Emergency Response Bond Program

---

## (ESER 2010, 2014 & 2020)

### Neighborhood Fire Stations (ESER 2010)

**Component Description:** The ESER bond will renovate or replace selected fire stations to provide improved safety and a healthy work environment for the firefighters. The selected stations are determined according to their importance for achieving the most effective delivery of fire suppression and emergency medical services possible.

**Background:** All of the 43 San Francisco Fire Stations have, as a result of minimal deferred maintenance over decades, yielded building conditions that potentially compromise the safety and health of firefighters. Many stations have structural/seismic and other deficiencies that could inhibit their continuous functionality. It is assumed that some may not be operational after a large earthquake or other disasters, hindering the ability of the firefighters to respond to calls for service. Seismic capacity study of key fire stations –10 of 43- has yielded necessary insight into their ability to sustain operational effectiveness. Additional stations will be examined as funding is provided.

Prior to approval of the bond program, the majority of the City's fire stations, and support facilities were generally assessed for their respective condition and to identify vulnerabilities or deficiencies that could compromise their essential role as deployment venues for first responders.

For budget planning purposes, the assessment reports were reviewed by cost estimators who prepared estimates of the cost of correcting the conditions noted in the assessments. The cost estimates indicate only the overall "order of magnitude" of the various facility deficiencies and relative proportions of various types of work.

Preliminary assessment of the neighborhood fire stations indicate that the sum of all existing maintenance generated deficiencies would require a budget exceeding \$350M to correct, significantly more funds than are available in this bond for such purposes. Therefore, additional detailed planning is required to focus the expenditures of this bond towards the most beneficial and cost-effective immediate rehabilitation and/or improvement projects.

A list of projects to be completed by the ESER 2010 bond was identified by Public Works and the Fire Administration and accepted by the Fire Commission at their meeting of September 23, 2010.

The ESER 2010 bond program is anticipated to complete improvements to 24 of the 43 neighborhood fire stations. The approved slate of projects was presented to the SF Fire Commission on April 26, 2012.

The following is a detailed status per project:

# Earthquake Safety and Emergency Response Bond Program (ESER 2010, 2014 & 2020)

## Seismic Projects



### **Fire Station No. 16 (Marina District)**

Substantial completion was achieved on January 10, 2019. As a result of the overall delay of the project, Public Works assessed liquidated damages from July 17, 2018, to January 10, 2019, in the amount of \$474,872. SFFD began occupying and operating out of the new station on January 16, 2019. The United States Green Building Council (USGBC) awarded the project LEED Gold Certification on August 4, 2021.

### **Fire Station No. 5 (Fillmore District)**

SFFD began occupying and operating out of the station on April 29, 2019. A ribbon cutting ceremony was held on May 1, 2019. Final Completion was achieved on February 19, 2020. Final payment was issued to the contractor in April 2020. On December 17, 2020, project was awarded LEED Gold Certification New Construction from the United States Green Building Council (USGBC).



### **Fireboat Station 35: (See *ESER 2014 this report*)**

Fireboat Station 35 occurs within the ESER 2014 Program, however the pre-design and CEQA and environmental review costs of \$687,125 occurred under ESER 2010. The budget that was identified for Station 35 was funded by ESER 2010 and the Fire Facilities Bonds funds totaling \$17M. The ESER 2010 funding will be used to offset Station 5 and 16. The Fire Facilities Bond funds will continue to supplement ESER 2014 funds for Station 35.

### **Equipment Logistics Center (ELC):**

The ELC project was identified after the passage of the bond – it was suggested as a project combining the Bureau of Equipment (BOE) and Emergency Medical Services (EMS). In this configuration, the total functional program area made it infeasible to occur at the current EMS venue at 1415 Evans; more significantly, the budget for such a project was not available within the ESER 2010 NFS funding.

SFFD requested that Public Works prepare a program analysis and cost estimate for the EMS separate from the BOE for consideration in the 2016 Public Health and Safety Bond – successfully



## Earthquake Safety and Emergency Response Bond Program (ESER 2010, 2014 & 2020)

---

passed by voters, receiving 79 percent voter approval in June 2016, and the Ambulance Deployment Facility project was completed in 2021. The BOE remains a priority project as it resides within a seismically compromised unreinforced brick building.

### **Comprehensive Project: Station 36**

Project was successfully completed and SFFD reoccupied the station on November 19, 2014.

### **Focused Scope Projects**

#### **Roof Replacements – 15 Stations – Complete**

Summary: The scope consists of installing new roofing systems and upgrading exhaust fans at fifteen (15) stations (FS 2, 6, 10, 13, 15, 17, 18, 26, 28, 31, 32, 38, 40, 41, and 42).

#### **Exterior Envelope Improvements – 16 Stations – Complete**

Summary: The scope consists of paint and ancillary work to prevent water intrusion at sixteen (16) stations (FS 2, 6, 10, 13, 15, 17, 18, 26, 28, 31, 32, 38, 40, 41, 42, and 49).

#### **Emergency Generator Replacement – 5 Stations – Complete**

Summary: The scope consists of installing new emergency generators and related ancillary scopes of work at five (5) stations (FS 6, 12, 15, 17, and 21).

#### **Shower Reconstruction – 9 Stations – Complete**

Summary: The scope of work consists of demolition of existing shower stalls and installation of new shower stalls including shower pans, shower heads, divider walls, glass doors, floor drains, p-traps, access panels, and ancillary scopes of works at nine (9) stations (FS 6, 13, 15, 17, 18, 26, 38, 40, and 41). Stations 17 and 18 were put on hold by SFFD due to scope complexity.

#### **Mechanical Scope – 15 Stations – Complete**

Summary: The scope is structured into two phases: Phase 1 – Investigation and Scope Validation, and Phase 2 – Execution of Work. Work was completed at fifteen (15) stations (FS 2, 6, 10, 13, 15, 17, 18, 26, 28, 31, 32, 38, 40, 41, and 42).

#### **Window Repair – 12 stations – Complete**

Summary: The scope consists of installing new latch, handle, weep holes, sealant and weather-strip to existing windows, replacing broken panes of glasses, and adjusting alignment and resealing the perimeter of the frame to watertight at twelve (12) stations (FS 2, 6, 17, 25, 26, 28, 31, 32, 38, 40, 41, and 42).

### **Additional Focused Scope**

Summary: Additional Focused Scope includes Apparatus Bay Door Replacement at multiple Fire Stations and Exterior Envelope Painting at Fire Department Headquarters. In addition, in July 2017, SFFD requested that additional Fire Stations receive Generator Replacements. The

## Earthquake Safety and Emergency Response Bond Program (ESER 2010, 2014 & 2020)

---

funding allocated for Additional Generators will be applied toward a prioritized list of Fire Stations selected by SFFD.

Detail:

- **Emergency Generator Replacement – 1 Station (FS 14)**  
Building permit was issued on June 17, 2021. Contractor procurement to start in mid-FY22/23.
- **Apparatus Bay Door Replacement – 10 Stations – Complete**  
Contractor completed work at 10 fire stations (FS 8, 12, 14, 18, 20, 26, 28, 33, 39, and 43).
- **Exterior Envelope Improvements – SFFD Headquarters – Complete**

# Earthquake Safety and Emergency Response Bond Program (ESER 2010, 2014 & 2020)

## Neighborhood Fire Stations (ESER 2014)

**Component Description:** The ESER 2014 bond program continues the work of ESER 2010 bond, categorizing projects according to three sub-categories: Focused Scope, Comprehensive, and Seismic. The ESER 2014 bond program will continue to address identified and prioritized needs at Fire Stations that were previously not addressed under the 2010 program. Significant construction projects will have been completed at all SFFD Fire Stations at the conclusion of the 2010 and 2014 bond programs.

SFFD approved the NFS Focused Scope, Comprehensive and Seismic budget portfolio in April 2015. In April of 2018, SFFD approved an updated budget revision.

Design services are being provided by Public Works Bureaus of Architecture & Engineering, unless otherwise noted.

The following is a detailed status per project:

### Seismic Projects:

#### **Fireboat Station 35 at Pier 22½**

Design-Builder: Swinerton-Power, a Joint Venture and Shah Kawasaki Architects

During the current reporting period, the installation of the security fencing, guardrails, the public art sculpture - *BOW*, and sitework along the Embarcadero was completed. Water service installation was completed in November 2021. Gas, sewer service and permanent power were provided in mid-December 2021. Substantial completion was achieved on February 28, 2021. Projected Final Completion is May 15, 2022. Ribbon Cutting Ceremony held on March 10<sup>th</sup>, 2022.



FS35 Ribbon cutting ceremony, March 10<sup>th</sup>, 2022

# Earthquake Safety and Emergency Response Bond Program

---

## (ESER 2010, 2014 & 2020)

### **Pier 26 Fireboat Berths**

Design Services: COWI North America; Contractor: Vortex Marine Construction

Substantial Completion issued on September 16, 2020. Certificate of Final Completion was issued in July 2021. Project is completed.

### **Comprehensive Projects:**

#### **Fire Station 3 & 7**

FS 3 was determined to be a potential collapse hazard in the event of a major earthquake based on the structural assessment received from the Public Works Bureau's IDC-Structural study. SFFD directed the design work to stop and will consider plans for a new FS 3 in its overall seismic portfolio of future bonds. FS 7 was determined to be a project that, as instructed by the CPC, would provide funds to allocate to the TCFSD project. The corresponding \$2.3M in unused project funds were transferred in Q4 FY2021. FS 7 is anticipated to be a project delivered under ESER 2020.

### **Focused Scope Projects:**

The NFS team has moved forward with planning, design, bidding, and construction of the Focused Scope projects in all 9 of the categories: apparatus bay doors, roof replacements, shower renovation, exterior envelope, windows, sidewalk, emergency generator, and mechanical projects. ESER 2014 Focused Scope projects upgrade 35 Fire Stations in these categories.

Design services are being provided by Public Works Bureaus of Architecture (BOA) and Engineering (BOE) for Roofing, Exterior Envelope, Apparatus Bay Door, Showers, Windows, and Sidewalk categories of work. GHD, an as-needed electrical engineering consultant, is providing design services for Generator Replacement projects.

### **Apparatus Bay Doors – 34 Stations**

Work at the 34 fire stations will be divided between ESER 2010 and ESER 2014, within parameters of allocated budgets under each bond. Packages 1 through 5 were completed in 2016-2021.

### **Roof Replacements – 9 Stations – Complete**

Work was completed at nine (9) stations (FS 3, 9, 17, 20, 23, 24, 29, 40, and 43).

### **Shower Reconstruction – 7 Stations – Complete**

Work was completed at seven (7) stations (FS 13, 17, 19, 20, 22, 33, and 34).

### **Window Repairs – 13 Stations – Complete**

Work was completed at thirteen (13) stations (FS 8, 9, 11, 12, 14, 19, 20, 21, 23, 25, 29, 37, 43).

## Earthquake Safety and Emergency Response Bond Program (ESER 2010, 2014 & 2020)

---

### **Exterior Envelope Improvements – 8 Stations**

- Package 1 (FS 8, 20, 23 & 29): Scope includes power wash and new paint at exterior facade of stations. BBR was selected to perform the work. Work was completed at FS 8, 20, and 29 in 2018-2019. Public Works was asked to Hold on FS 23 in January 2020, due to other priorities, at the client's request.
- Package 2 (FS 24 & 34): package was determined to be a project that, as instructed by the CPC, would provide funds to allocate to the TCFSD project. The corresponding \$2.1M in unused project funds were transferred to the TCFSD in Q4 FY2021.
- Package 3 (FS 11): Scope of work included painting of the exterior. This project was folded into the Hose Tower Removal project, which is funded by the 2016 Public Health and Safety Bond and was completed in March 2021.
- Package 4 (FS 22): Complete.

### **Mechanical Scope – 5 Stations – Cancelled**

- Package 1 (8, 9, 14, 20 & 41)

### **Emergency Generator Replacements – 7 Stations:**

- Station 31: Work is complete.
- Station 2: The scope of work consists of replacement of an existing roof top generator with a new generator, structurally strengthen the roof to support the new fuel tank with capacity for 72-hour run time and provide new fuel fill port and piping to the generator. The construction contract was awarded to Argo Construction, a certified LBE firm. Public Works issued a Notice to Proceed on April 19, 2021, and Argo mobilized in July 2021. Work is 75% complete. The generator was ordered on June 27, 2021. Currently, due to extraordinary lead times in manufacturing of 30+ weeks, in lieu of the usual 12 weeks, the project is projected to have a later Substantial Completion date in May 2022 instead of the contract date of December 14, 2021.
- Station 19: Scope of work will consist of replacement of the existing generator with a new generator and fuel tank to meet the Fire Department's 72-hour emergency run time protocol. FS 19 is anticipated to be advertised in late 2022.

### **Sidewalk and Apparatus Bay Slabs – 3 Stations – Complete**

Work was completed at three (3) stations (FS 13, 26, and 31).

### **Security Access Control Systems – 35 Stations – Complete**



# Earthquake Safety and Emergency Response Bond Program

---

## (ESER 2010, 2014 & 2020)

### Neighborhood Fire Stations & Support Facilities (ESER 2020)

#### **Component Description:**

ESER funded projects are carefully selected based on the operational and tactical importance of fire stations and support facilities, ensuring the effective deployment of well-trained first responders in the event of a major earthquake or other disaster. The specific improvements and seismic upgrades to neighborhood fire stations and support facilities are established with the Fire Department's approval before the planning and design phases begin. This screening process guarantees that bond funds are spent on the highest priority projects.

#### **New Construction:**

##### **Fire Training Facility**

#### **Project Background:**

The San Francisco Fire Department's (SFFD) new Fire Training Facility (FTF) will be located on two City blocks bounded by Carroll Avenue, Hawes Street, Armstrong Avenue, and Griffith Street. Bancroft Avenue will be vacated to form a contiguous site 300,000 square feet (SF) in area. The purpose of the FTF is to provide necessary facilities for live fire training, classroom training, equipment training, and other forms of training for effective firefighting, and to improve operational efficiency by consolidating existing SFFD training facilities. The building would replace existing Fire Department facilities for its training program currently located in the South of Market area and on Treasure Island (which the SFFD is obligated soon to vacate).

The project is comprised of a Fire Training and Administration Building, Apparatus Building, Maintenance Shop, Training Tower, various burn rooms, training props and simulated structures, and associated site improvements.

#### **Project Status:**

The preparation of the CEQA Report, specifically the FMND and MMRP, were completed at the end of December 2021 and introduction of the motion to approve was submitted to the Clerk of the BOS on 1/7/2022. Real Estate scheduled to request full Board's authorization to purchase FTF property in Q4 FY2022.

The *A/E Team Led by an Executive Architect* RFQ was advertised in August 2021. Three (3) proposals were received on September 30, 2021. The CM/GC RFQ was submitted to Public Works Contract Administration on October 21, 2021 and is pending advertisement. The A/E and CM/GC RFQs and other project activities are on hold per SFFD's request.

**Project Budget:** \$235M

**Project Milestone Schedule:** *(NOTE: The following dates were valid until the SFFD requested a hold on project development activities in October 2021. The schedule will be revised upon an agreement with the SFFD to restart project development activities.)*

## Earthquake Safety and Emergency Response Bond Program (ESER 2010, 2014 & 2020)

---

- Environmental Review – December 2021
- Environmental Review Amendment – December 2022
- Design – June 2023
- Permitting – March 2024
- Construction / Move-In – December 2026
- Close-Out/Warranty - December 2027

### **Seismic Improvement:**

#### **Fire Station 7 Replacement**

Fire Station 7, located at 2300 Folsom Street in the Mission District is one of two Division Stations, and was constructed in 1954. Fire Station 7 houses a Division Chief, a truck, an engine, and rescue squad vehicles, and occupies a 1.1- acre site at the southwest corner of 19th Street and Folsom Street. The site consists of a fire station, drill tower, and a small training building as well as a paved surface parking lot and some temporary structures. The primary façade faces north on 19th Street and is five bays wide, with four apparatus bay openings. The small one-story Training Building at 2310 Folsom Street, which consists of training rooms, is situated directly south of the fire station, with the primary façade facing east on Folsom Street. The Drill Tower is the 3rd major structure on the site located southwest of the fire station. The seven-story reinforced concrete tower has a recently applied Classical Revival detailing.

The Fire Station 7 complex of buildings was constructed along with fourteen other stations from 1952 Bond Act funds, within a period of four to five years. Therefore, they contribute to the California Register-eligible 1952 Firehouse Bond Act Thematic Historic District, and although they do not appear individually eligible under California Register Criterion, Fire Station 7 and the two ancillary buildings “appear eligible for CR as a contributor to a CR eligible district through a survey evaluation.”

Public Works’ Infrastructure Design & Construction (IDC) Structural Engineering undertook seismic studies to determine the existing hazard risk at the Battalion and Division Fire Stations, due to their importance as essential facilities and SFFD Command Centers that need to continue immediate operations during response and recovery in the aftermath of a major earthquake or other disaster.

Based on the findings of the IDC Seismic Evaluation, Fire Station 7 has extensive seismic deficiencies in reinforcing steel, inadequate shear walls and connections, and deep foundation problems with probability of liquefiable soils beneath the foundation. IDC Structural assigned the highest seismic hazard rating (SHR) of 4 to Station 7. An SHR 4 rating indicates that the station is expected to structurally collapse in a major earthquake, posing high life safety risk to occupants from falling hazards. The evaluation found structural deficiencies would prevent

## Earthquake Safety and Emergency Response Bond Program (ESER 2010, 2014 & 2020)

---

egress of apparatus and render Fire Station 7 to be out of service, with damages deemed to be infeasible to repair. For this reason, IDC Structural recommends replacement.

*(NOTE: The project schedule will be established upon an agreement with the SFFD to restart the project development activities.)*

# Earthquake Safety and Emergency Response Bond Program

---

## (ESER 2010, 2014 & 2020)

### Emergency Firefighting Water System (ESER 2010, 2014, 2020)

**Component Description:** The Earthquake Safety and Emergency Response Bonds will seismically improve the Emergency Firefighting Water System cisterns, pipelines, tunnels, and physical plant.

**Background:** The Emergency Firefighting Water System is vital for protecting against the loss of life, homes, and businesses from fire following an earthquake. It is also used for the suppression of non-earthquake multiple-alarm fires.

#### **Status:**

#### **Planning and Design**

1. Potable EFWS Pipeline – Install new Potable Emergency Firefighting Water System pipeline in Richmond and Sunset areas.
2. Fireboat Manifold – Construction of new pipeline and fireboat manifold near Fort Mason Pier 2 for fire suppression.

#### **Construction**

1. 19th Avenue Pipeline – Install new 20-inch diameter Emergency Firefighting Water System (EFWS) pipeline on 19th Avenue from Irving Street to Kirkham Street and a new 36-inch diameter welded steel Potable Emergency Firefighting Water System (PEFWS) pipeline on 19th Avenue from Vicente Street to Sloat Blvd as part of Public Works' 19th Avenue Roadway Improvements, Contract 2652J. Construction completion expected December 2023.
2. Clarendon Supply – Provide a new EFWS water supply and pipe near the crest of Clarendon Avenue at Dellbrook Avenue. Construction completion expected September 2022.
3. Pumping Station 2 – Improve the building structure's seismic performance. Construction completion expected December 2022.
4. Terry Francois Blvd/Mission Rock/Warriors Way Pipeline – Install new 20" AWSS pipe on Terry Francois Blvd from Mission Rock Street to Warriors Way as part of SFPUC contract DB-129.1. Construction completion expected May 2022.
5. Vicente Pipeline – Install a new 36-inch diameter PEFWS pipeline on Vicente from 19<sup>th</sup> Avenue to 25th Avenue. Construction completion expected July 2024.

# Earthquake Safety and Emergency Response Bond Program (ESER 2010, 2014 & 2020)

## Office of the Chief Medical Examiner (ESER 2014)



**Project Description:** The project will relocate the Office of the Chief Medical Examiner (OCME) to One Newhall Street in the India Basin Industrial Park. The new facility will house about 50 employees who are organized into the four units of the OCME: Field Investigations, Medical/Autopsy, Laboratory, and Administration.

One Newhall Street was an existing 28,000 gsf industrial warehouse which was almost entirely demolished, and a second floor was added within the existing footprint of the building resulting in a seismically safe 46,000 gsf facility.

**Background:** The existing OCME is located at 850 Bryant also known as the Hall of Justice (HOJ). The HOJ is over 50 years old and seismically deficient. In the event of a major earthquake, this building is not expected to be operational. This project is part of a larger strategy to replace the Hall of Justice established in the City's 10-Year Capital Plan as the *Justice Facilities Improvement Program* (JFIP).

The OCME is accredited by the National Association of Medical Examiners (NAME). During the previous accreditation in 2008, the City was advised that the existing facility was undersized, had



## Earthquake Safety and Emergency Response Bond Program (ESER 2010, 2014 & 2020)

---

multiple deficiencies that are currently mitigated by operational protocols, and that the facility should be replaced to assure continued accreditation.

### **Project Status:**

**LEED Gold** is the mandatory goal for this project (minimum 60 credits required to be awarded for the Gold certification). Award of one of the final credits, pertaining to Indoor Environmental Quality Credit 1 (IEQc1) – Outdoor Air Delivery Monitoring, required the installation of nine (9) CO2 sensors at the facility. This work was completed in February 2021. In April 2021, the U.S. Green Building Council (USGBC) awarded the project LEED Gold certification.

**Project is completed and the facility is occupied.**

**Project Budget:** Project Cost, inclusive of all change orders, tracked to within the Total Project Budget of \$75M (GO Bonds and general funds).

# Earthquake Safety and Emergency Response Bond Program (ESER 2010, 2014 & 2020)

## Traffic Company & Forensic Services Division (ESER 2014)



**Project Description:** The project will relocate the SFPD Forensic Services Division (FSD) and SFPD Traffic Company (TC) to a site located at 1995 Evans Avenue, San Francisco. The amount of space requested for the Traffic Company was determined based on the Police Facilities Master Planning Study dated August 23, 2012.

The project is being developed to support a Full Time Employee (FTE) forecast for 2020 FSD demand of approximately 109 for FSD, approximately 100 for the Traffic Company and approximately 9 for the Real Estate Division's building engineering and custodial services. The size of the facility is approximately 100,000 gross square feet, a reduction of approximately 20,000 gross square feet necessary to achieve budget reconciliation. As a result, the potential for future expansion is diminished, if required.

**Project Background:** The SFPD Traffic Company is currently located at the Hall of Justice (HOJ) at 850 Bryant Street. The SFPD FSD is currently located in two facilities. The FSD Administration, Crime Scene Investigations, and Identification units are housed at the HOJ. The FSD Crime Lab is housed in Building 606 at the Hunters Point Shipyard.

The HOJ is over 50 years old and seismically deficient. In the event of a major earthquake, this building is not expected to be operational. This project is part of a larger strategy to replace the Hall of Justice, established in the City's 10-Year Capital Plan as the Justice Facilities Improvement Program (JFIP).

## Earthquake Safety and Emergency Response Bond Program (ESER 2010, 2014 & 2020)

---

The Hunters Point Shipyard is being transferred from the U.S. Navy to the City. The City plans to develop the Shipyard as a residential area. The area in which Building 606 is located is planned to be public open space as an amenity for nearby residences. Prior to the transfer of the property, the Navy is obligated to remove and mitigate hazardous materials in the soil.

### **Project Status:**

Clark Construction was selected to be the Construction Manager/General Contractor (CM/GC) through a competitive solicitation in July 2017. Clark leads a team of “Core Trade Subcontractors,” specifically: C/S Erectors for the exterior building envelope, Southland Industries for mechanical and plumbing, and Rosendin Electric for electrical. FY21-22 Q3 saw the procurement and installation of most remaining FF&E, completion of a phased move-in by SFPD Traffic Company and CSI, and coordination of the Crime Lab move-in. Some FF&E items were delayed due to Covid related shortages. Nevertheless, RED now has control of the facility and SFPD’s Traffic Company and CSI units moved into the facility in late 2021 and The Crime Lab moved into the facility over two days on January 14<sup>th</sup> and February 18<sup>th</sup>. Temporary Certificate of Occupancy (TCO) was granted on July 22, 2021, Substantial Completion was issued on August 27, 2021, 25 days ahead of schedule and DBI issued the Certificate of Final Completion and Occupancy (CFCO) on January 6, 2022.

The project is obligated to achieve LEED Gold certification, which is nearing completion.

### **Schedule:**

- |  |                       |
|--|-----------------------|
| • Pre-Construction Services NTP                            | November 27, 2017     |
| • Pre-Construction Services Full Team Kick-off Meeting     | November 30, 2017     |
| • Indicator Pile Program construction Services NTP         | August 19, 2019       |
| • New building construction Services NTP                   | October 7, 2019       |
| • Steel Topping-Out Ceremony                               | April 3, 2020         |
| • Temporary Certificate of Occupancy (TCO)                 | July 2021             |
| • Substantial Completion                                   | August 27, 2021       |
| • Certificate of Final Completion and Occupancy (DBI CFCO) | January 6, 2022       |
| • Crime Lab Phase Move-In                                  | Jan 14 & Feb 18, 2022 |

# Earthquake Safety and Emergency Response Bond Program (ESER 2010, 2014 & 2020)

---

## Police Facilities (ESER 2014)

**Component Description:** The project includes various focused scope projects at 12 police facilities (9 district stations and 3 support facilities – Southern Station is new, built within the Public Safety Building) across the City. The work scopes are derived from a series of onsite investigations, observations, and professional evaluations of different building systems that include mechanical, electrical, plumbing, fire protection, and structural safety. It also includes assessments of building envelope (i.e. integrity of roof, doors, windows, and walls), ADA accessibility requirements, as well as other site improvements that ensure safety and security.

The component's overall current budget is \$26.8M. The cost to address all police facilities' issues is far in excess. Project priorities are according to building deficiencies that potentially compromise police staff and the public's health and safety, and others that pertain to code compliance.

### **ADA Packages 1 and 2 – 10 Facilities – Complete**

Work to address accessibility issues at ten (10) facilities (Central, Mission, Bayview, Northern, Tenderloin, Park, Ingleside, Taraval, Richmond, and Police Academy) is complete.

### **Firearms Simulator Training Facility at Lake Merced – Complete**

### **Northern, Richmond, and Taraval Station Renovation Project**

Substantial Completion was achieved as anticipated on May 5, 2020. Final Completion was issued on March 26, 2021. Project is completed.

### **Park and Ingleside Station Renovation**

Substantial completion achieved on February 19, 2020. Final Completion issued on March 3, 2021. Project is completed.

### **MEP Package 2 at Bayview and Tenderloin Station**

Substantial Completion achieved on March 3, 2021. Close-out documents have been submitted and are under review. Stop notices were removed. Final Completion is anticipated in May 2022.

### **Police Academy Renovation**

This project has been postponed due to the unavailability of funding.

### **Mission Station Renovation**

This project is advancing under ESER 2020.

# Earthquake Safety and Emergency Response Bond Program

---

## (ESER 2010, 2014 & 2020)

### Police Facilities (ESER 2020)

#### **Component Description:**

The City's growth in recent years has directly impacted the volume of calls for service and response times. The San Francisco Police Department continuously seeks to align its staffing needs to meet the City's growth and changing needs. These changes present a challenge to the Police Department's district stations and support facilities, as they were built –several near 100 years ago- for a smaller police force and the facilities lack adequate space for the current staffing levels. Similar to the Neighborhood Fire Station program, ESER-funded Police projects are carefully selected based on the operational and tactical priorities of police stations and support facilities, to always ensure the effective deployment of first responders, and especially in the event of a major earthquake or other disaster.

#### **Project Status:**

##### **Ingleside District Police Station Replacement**

**Background:** The Ingleside District Police Station is located at 1 Sgt. John V. Young Lane, within Balboa Park, a property owned and maintained by the San Francisco Recreation & Park Department. The station serves an area from Cesar Chavez Avenue, between Highway 101 and Faxon Avenue, to the San Mateo County line. The existing 16,231 square foot station was built in 1910 and is a local historic resource within the Balboa Park Historic District. The station includes a main building and a second building separated by a courtyard. The station's parking lot surrounds the buildings. A major renovation to the station was completed in 1991 and more recent improvements, including critically important upgrades to the mechanical system and the replacement of the emergency generator were completed in 2020.

This first responder facility is considered an Essential Services Building, which means it needs to remain in operation after a major earthquake. Recent analysis has determined that Ingleside Station does not meet the performance criteria for Immediate Occupancy or Life Safety. In addition, the station and adjoining park area will likely become a major evacuation center for this area of the City during a major emergency. The 100-year-old station does not support the Police Department's mission in the Ingleside area. Ingleside Station suffers functional, space and security deficiencies that impede operational efficiency and its vulnerability to a major seismic event would compromise the station's ability to perform its mission in that event.

SFPD's staffing and facility requirements will be impacted by growth in this district. A significant amount of new development is planned within the Ingleside District Station boundaries, so a sizeable increase in the number of residents is expected in this district over the next 20 years. The inefficiencies at Ingleside Station will require its complete



## Earthquake Safety and Emergency Response Bond Program (ESER 2010, 2014 & 2020)

---

replacement to meet Essential Services Building, modern policing requirements and expected growth. Priorities for improvements in the new facility include seismic design to meet Essential Services Building criteria, updating to current policing programmatic needs, site security and expansion options to meet expected growth for the next 50 years.

**Project Status:** The core project team has been assembled. At the behest of the elected district supervisor, the project team is studying an alternate design concept – which includes the rehabilitation of the existing building; constructing a one-story pavilion immediately adjacent to the existing building; and construction a new two-story building at the site across the parking lot. A Request for Qualifications (RFQ) was advertised on 10/15/21 to solicit interests from qualified construction management/ general contractor firms to provide pre-construction and construction phase services. A list of three CM/GCs was established in December 2021 and will be invited to respond to a Request for Proposals in May/ June 2022 for the project. Based on the preliminary schedule, planning, design and permitting is anticipated to occur through April 2024, and construction commencing November 2024.

### **Taraval District Police Station Seismic Retrofit**

**Background:** The Taraval Police Station is located at 2345 24th Avenue and serves several neighborhoods located on the west side of the City. The station was built in 1929 and is considered an Essential Services Building and a historic resource. Taraval Station's most recent structural improvement was completed in 1996. Recent analysis has determined that Taraval does not meet the performance criteria for Immediate Occupancy or Life Safety required for police stations in the event of a major seismic event per the prevailing version of the building code. Taraval Station also exhibits functional, space and security deficiencies that impair operational efficiency and potentially compromise its ability to perform its mission in the event of a major City emergency.

**Project Status:** In July 2021, Public Works structural engineers analyzed the existing building to determine possible seismic strengthening solutions. Based on their preliminary analysis, achieving the project's intent would require substantially more funding than that for which this ESER 2020 Bond has capacity. Through discussion with the Police Department, this project will be deferred until there is identified a future funding source to achieve the project goals.

### **Police Surge Facility Construction**

## Earthquake Safety and Emergency Response Bond Program (ESER 2010, 2014 & 2020)

---

**Background:** The Police department needs a Surge Facility as a temporary base for operations while the Ingleside District Police Station is under construction. This temporary Surge Facility will accommodate the station's current staff for the duration of construction of the Ingleside Police Station Replacement Project. The options for such a facility are either the allowed use of an appropriate building or the construction of a modular facility at an appropriate City parcel. The constructed option would be comprised of economical, prefabricated modular structures, tightly arranged, and linked by elevated decks for accessible circulation. The modular buildings would house spaces essential for police operations, such as offices, storage, lockers, showers, and temporary holding for detainees. The building option would require tenant improvements to accommodate the essential police operations at an existing City-owned site. A parking area for no fewer than sixty police vehicles is preferred. Site utilities, such as sewer, water, gas, electricity will need to be improved for the lease option or brought in for a modular installation.

**Project Status:** Public Works and Police Department has been in discussion with Recreation & Park and the Real Estate Division to locate a possible site that could accommodate the operations of the Ingleside District Police Station during when that project is under construction. Based on the preliminary schedule, planning, design & permitting is anticipated to occur from April 2022 to April 2023 and construction beginning Fall 2023.

### **Lake Merced Police Pistol Range Replacement**

**Background:** The Police Firing Range is a 31,121 square foot open-range facility located at Lake Merced. The facility was built in 1942 and renovated in 1990, including replacement of the open-air range. In 2015, the SFPD retained Public Works to address deficiencies at the range that presented a hazard to its users and the surrounding community. A maintenance program was established, focused on keeping the range safe and serviceable for effective use until its replacement. Over the past five years, the maintenance work has focused on the repair of the severely corroded overhead truss structure, the repair of the bullet-capture baffling assembly, and the mitigation of noise from the discharge of firearms that exceeded the Cal-OSHA standard for noise levels.

SFPD uses the range for Police Academy training of new recruits, required re-certification of existing officers, and certification support for some surrounding Bay Area Police departments. The extreme degree of maintenance required to the existing exposed trusses has reached the end of its effectiveness. The envisioned project aimed to completely replace the overhead truss systems to meet prevailing seismic standards, and upgrade for accessibility to the existing administration building as required by code.

## Earthquake Safety and Emergency Response Bond Program (ESER 2010, 2014 & 2020)

---

**Project Status:** Site investigative work and Programming Phase Work began in October 2021 and concept design was completed December 2021. The estimated cost will not allow the City to proceed with this project under the ESER2020 Bond Program.

### **Mission District Police Station Structural Improvement**

**Background:** Located on Valencia Street, Mission District Police Station is a rectangular two story, steel-framed building with exterior walls constructed using reinforced concrete masonry units. It was built in 1993 under the 1991 San Francisco building code (UBC model code) as type ii-n (non-rated) construction. The proposed scope of work is a voluntary seismic strengthening of four existing beams located on the exterior of the building. New steel members will strengthen these four existing exterior beams by bracing them to interior beams. Architectural work is limited to finishes, ceilings, and precast headers at four existing entry locations as required to accommodate structural work. Work is limited to the first floor, with no work to be performed on the second floor or roof. The project will also consist of accessibility improvements in the police fleet parking area and minor modifications at the existing restrooms. The station is expected to maintain its normal 24 hours a day, 365 days a year operation throughout construction, with temporary re-routing of employee circulation and egress. Entry to the public lobby will be maintained throughout construction.

**Project Status:** Bid was initially advertised on 12/29/2021 and subsequently rebid on 3/10/22. Four bids received on 3/23/22 ranged between \$308k to \$390k (compared against an independent estimate of \$300k). Construction is anticipated to occur from May 2022 to March 2023.

# Earthquake Safety and Emergency Response Bond Program

## (ESER 2010, 2014 & 2020)

### Disaster Response Facilities (ESER 2020)

**Component Description:** After a major earthquake or other disaster, the City will rely on select public buildings to deploy aid, provide shelter and coordinate emergency response and recovery. During and after a major disaster, these public buildings must have the capacity to function as disaster-response facilities that could serve as:

- Shelter: an existing facility, such as a school, recreation center, community center or convention center, temporarily converted to provide safe, accessible, and secure short-term housing for disaster survivors.
- Local Assistance Center: a site where individuals, families, and businesses can access available disaster assistance programs and services
- Commodity Point of Distribution: an accessible site where the public can pick up emergency supplies following a disaster
- Unified Command Post: a field location that can accommodate the primary functions of incident command: command, operations, planning, logistics and finance and administration
- Logistics Staging Area: provides a waystation for incoming shipments that meet a large array of resource request from local government
- Base Camp/Mutual Aid Staging: a location for local and mutual aid organizations to gather prior to deployment

**Background:** The Kezar Pavilion site will be renovated to provide the disaster response functions described above. Its size, location in Golden Gate Park adjacent to Kezar Stadium and related parking lots offers the best venue to dedicate the \$70 million available to upgrade a city-owned facility for post-disaster response. While Kezar will serve as a Recreation and Park facility in non-disaster time, it will be designed to function within a seismically safe facility to serve multiple disaster-response functions such as shelter, command center and distribution of pre-staged resources and equipment.

Kezar Pavilion will be the sole project for the Disaster Response Facilities component of the ESER 2020 bond. The cost of upgrading the Pavilion and expanding the facility will require the entire amount allocated for this bond component.

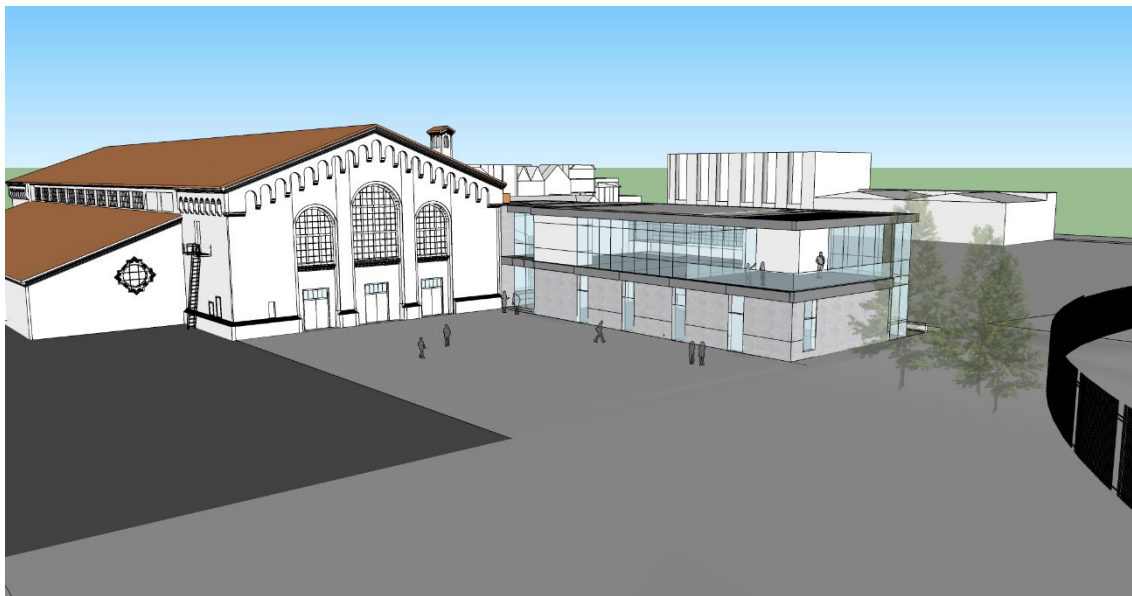
### Project Status:

The project is currently moving through the concept planning and development phase. Project stakeholders are in the process of defining and refining the specific program requirements. Site evaluation work is on-going which includes a detailed site and building survey assessment, hazardous materials evaluation, geotechnical soil evaluations, site utility location and condition assessment and structural destructive testing. Several of

## Earthquake Safety and Emergency Response Bond Program (ESER 2010, 2014 & 2020)

---

these items will be concluding in the coming month. Consultation with SFPD and SFFD has been completed which helps to inform the planning development. The project has also undergone an initial historic resource evaluation (phase 1) which has been reviewed by the historic preservation division at the Planning Department. Their initial feedback has been received and staff is currently providing detailed response to move the project through the Phase 2 review process. This formal engagement will continue in May 2022. The project will also need to be reviewed and approved by the Historic Preservation Commission upon complete of the Phase 2 process. Following the data collection process, the project team will initiate a formal public engagement process to review the concept plans followed by further plan development. A revised conceptual cost estimate is also being executed to determine where the project costs are during this unique construction climate.





# Earthquake Safety and Emergency Response Bond Program

---

## (ESER 2010, 2014 & 2020)

### 9-1-1 Call Center (ESER 2020)

**Component Description:** The 9-1-1 Call Center is operated and managed by the Department of Emergency Management. It is located at the City's Emergency Operations Center (EOC) at 1011 Turk Street in the Western Addition neighborhood and houses public safety dispatchers who answer all calls made to 9-1-1. These dispatchers are the initial point of contact for all of San Francisco's first responders, 24 hours a day. They serve the communications hub that dispatches first responders to the scene of accidents, crimes, fires and other emergency and non-emergency situations.

San Francisco's 9-1-1 Dispatch Center is one of the top 25 busiest 9-1-1 centers in the United States and receives an average of 3,700 calls each day. It is critical that our Dispatch Center can answer all calls for emergency and non-emergency service quickly.

The 9-1-1 Call Center component collected \$8.9M in the first issuance for planning, design, bid process, and construction. Based on the preliminary project schedule, planning, design, and permit activities are expected to last through March 2022, and construction from July 2022 through July 2023.

**Background:** The existing City Emergency Operations Center (EOC) at 1011 Turk Street was constructed in 1997 and consists of a two-story building housing the emergency operations center, the 9-1-1 Call Center, a data center for emergency communications, administrative offices, meeting rooms and support space.

The renovation of the 9-1-1 Call Center will increase the number of dispatcher workstations and reconfigure the supervisor bridge for better visual oversight of all the dispatchers.

Space requirements were determined by analyzing space needs for normal operations, projected growth, redundancy needed for reliable 9-1-1 functioning and capacity for high-demand events – both planned and unplanned. Workstations have specific size and layout requirements for dispatchers to work effectively and efficiently during both routine operations and large-scale emergencies.

#### **Project Status:**

The project was submitted to DBI for permit in January 2022. The following reviewers have approved the permit: Building, Structural, Mechanical, and PUC; Disability Access and Electrical review is underway. The permit application is expected to be fully approved in April / May 2022; tentative advertisement date is in May 2022; construction NTP is expected sometimes in Fall of 2022.

# Earthquake Safety and Emergency Response Bond Program (ESER 2010, 2014 & 2020)

## Budget, Funding and Expenditures

### ESER 2010

The budget for the ESER 2010 Bond Program is \$412,300,000. The revised budget is \$415,372,929 which includes partial interest earned thru FY2017.

The following is a summary of the budget and appropriation per component:

ESER 2010: As of March 2022

Bond Components and Projects	Bond Authorized Amount	Revised Budget (ii)	Appropriations	Expenditures	Encumbrances	Balances	Expenditures/ Appropriations
Public Safety Building (PSB)	239,000,000	229,379,359	229,379,359	229,239,530	10,841	128,987	100%
Neighborhood Fire Stations (NFS)	64,000,000	80,941,986	80,941,986	75,417,572	464,233	5,060,181	93%
Auxiliary Water Supply System (AWSS)	102,400,000	102,400,001	102,400,001	101,400,117	810,428	189,456	99%
Oversight, Accountability & Cost of Issuance (iii)	6,900,000	2,545,864	2,545,864	2,105,710	0	440,154	83%
Public Works Program Reserve		105,719	105,719	0	0	105,719	0%
<b>TOTAL (i)</b>	<b>412,300,000</b>	<b>415,372,929</b>	<b>415,372,929</b>	<b>408,162,929</b>	<b>1,285,502</b>	<b>5,924,498</b>	<b>98%</b>

(i) PeopleSoft financial data as of 4/18/2022 net of Underwriter's Discount Fee

(ii) Revised budgets based on PeopleSoft appropriations; data subject to change per clean-up efforts

The Accountability reports for the second thru sixth bond sales are available on the ESER website at <http://www.sfearthquakesafety.org/eser-reports.html>.

### Expenditures and Encumbrances

The ESER 2010 expenditures and encumbrances are \$408,162,929 and \$1,285,502 respectively. Expenditures represent 98% of the total current appropriations.

# Earthquake Safety and Emergency Response Bond Program

## (ESER 2010, 2014 & 2020)

### ESER 2014

The ESER 2014 budget is \$400,000,000 and the total appropriation is \$397,988,157, including a savings from the cost of issuance currently allocated within program components.

The following is a summary of the budget and appropriation per component:

ESER 2014: As of March 2022

Bond Components and Projects	Bond Authorized Amount	Revised Budget (ii)	Appropriations	Expenditures	Encumbrances	Balances	Expenditures/ Appropriations
Office of the Chief Medical Examiner (OCME)	63,895,000	67,533,024	67,533,024	67,470,731	0	62,293	100%
Traffic Company & Forensic Services Division (TC/FSD)	162,195,000	178,895,790	178,895,790	168,248,271	3,210,100	7,437,419	94%
Police Facilities (PF)	29,490,000	26,845,661	26,845,661	26,103,503	72,820	669,338	97%
Neighborhood Fire Station (NFS)	83,555,000	67,630,741	67,630,741	60,951,861	990,918	5,687,962	90%
Emergency Firefighting Water System (EFWS)	54,065,000	54,347,209	54,347,209	45,498,397	6,343,326	2,505,486	84%
Oversight, Accountability & Cost of Issuance (iii)	6,800,000	2,284,545	2,284,545	1,648,106	0	636,440	72%
Public Works Program Reserve		451,187	451,188	0	0	451,188	0%
<b>TOTAL (i)</b>	<b>400,000,000</b>	<b>397,988,157</b>	<b>397,988,157</b>	<b>369,920,868</b>	<b>10,617,165</b>	<b>17,450,124</b>	<b>93%</b>

(i) PeopleSoft financial data as of 4/18/2022 net of Underwriter's Discount Fee

(ii) Revised budgets based on PeopleSoft appropriations; data subject to change per clean-up efforts

The Accountability reports for the second and third bond sales are available on the ESER website at <http://www.sfearthquakesafety.org/eser-reports.html>.

### Expenditures and Encumbrances

The ESER 2014 expenditures and encumbrances are \$369,920,868 and \$10,617,165 respectively. The expenditures represent 93% of the total current appropriations.

# Earthquake Safety and Emergency Response Bond Program

## (ESER 2010, 2014 & 2020)

### ESER 2020

The ESER 2020 budget is \$628,500,000 and the total appropriation is \$167,475,982, funded by the two bond sales to date. The following is a summary of the budget and appropriation per component:

ESER 2020: As of March 2022

Bond Components and Projects	Bond Authorized Amount	Bond Component Budget	Appropriations	Expenditures	Encumbrances	Balances	Expenditures/ Appropriations
Emergency Firefighting Water System	153,500,000	151,170,852	35,000,000	972,619	8,261,307	25,766,073	3%
Neighborhood Fire Stations & Support Facilities	275,000,000	270,827,260	74,416,188	1,184,209	430,697	72,801,281	2%
District Police Stations & Support Facilities	121,000,000	119,163,994	32,022,200	1,566,205	566,916	29,889,079	5%
Disaster Response Facilities	70,000,000	68,937,848	15,855,705	946,879	135,185	14,773,641	6%
9-1-1 Response Facilities	9,000,000	8,863,438	8,863,438	598,282	467,793	7,797,363	7%
Oversight, Accountability & Cost of Issuance (ii)		9,536,608	1,318,451	708,943	0	609,508	54%
<b>TOTAL (i)</b>	<b>628,500,000</b>	<b>628,500,000</b>	<b>167,475,982</b>	<b>5,977,138</b>	<b>9,861,899</b>	<b>151,636,946</b>	<b>4%</b>

(i) PeopleSoft financial data as of 4/18/2022 net of Underwriter's Discount Fee

The Accountability reports for the first and second bond sales are available on the ESER website at <http://www.sfearthquakesafety.org/eser-reports.html>.

### Expenditures and Encumbrances

The ESER 2020 expenditures and encumbrances are \$5,977,138 and \$9,861,899 respectively. The expenditures represent 4% of the total current appropriations.

# Earthquake Safety and Emergency Response Bond Program (ESER 2010, 2014 & 2020)

## Attachments

### Attachment 1 – Contact Information



San Francisco Public Works | City and County of San Francisco | Building Design and Construction | Project Management  
49 South Van Ness Avenue, Suite 1000 | San Francisco, CA 94103 | (415) 557-4700 | [sfpublicworks.org](http://sfpublicworks.org)

Contact	Title	Component	Telephone No.	E-mail
Charles Higuera	Program Manager	ESER 2010, 2014 & 2020	(628) 271-2796	<a href="mailto:charles.higuera@sfdpw.org">charles.higuera@sfdpw.org</a>
Magdalena Ryor	Project Manager	ESER 2010 NFS; ESER 2014 OCME, NFS, PF	(628) 271-2758	<a href="mailto:magdalena.ryor@sfdpw.org">magdalena.ryor@sfdpw.org</a>
Michael Rossetto	Project Manager	ESER 2014 TC/FSD	(628) 271-2773	<a href="mailto:michael.rossetto@sfdpw.org">michael.rossetto@sfdpw.org</a>
Lisa Zhuo	Project Manager	ESER 2014 PF; ESER 2020 9-1-1 Call Center	(628) 271-2777	<a href="mailto:lisa.zhuo@sfdpw.org">lisa.zhuo@sfdpw.org</a>
Sherry Katz	Project Manager	ESER 2010 & 2014 NFS Focused Scope	(628) 271-2759	<a href="mailto:sherry.katz@sfdpw.org">sherry.katz@sfdpw.org</a>
Samuel Chui	Project Manager	ESER 2010 PSB; ESER 2020 PF	(628) 271-2760	<a href="mailto:samuel.chui@sfdpw.org">samuel.chui@sfdpw.org</a>
Sean O'Brien	Project Mgr. Asst.	ESER 2010 & 2014	(628) 271-2803	<a href="mailto:sean.obrien@sfdpw.org">sean.obrien@sfdpw.org</a>
Kelly Griffin	Financial Analyst	ESER 2010, 2014, & 2020	(628) 271-2800	<a href="mailto:kelly.griffin@sfdpw.org">kelly.griffin@sfdpw.org</a>



Public Utilities Commission  
525 Golden Gate Avenue, 9th Floor | San Francisco, CA 94102

Contact	Title	Component	Telephone No.	E-mail
David Myerson	Project Manager	ESER 2010 AWSS; ESER 2014 & 2020 EFWS	(415) 934-5710	<a href="mailto:dmyerson@sfgwater.org">dmyerson@sfgwater.org</a>



San Francisco Recreation & Parks  
49 South Van Ness Avenue, Suite 1200 | San Francisco, CA 94103

Contact	Title	Component	Telephone No.	E-mail
Dan Mauer	Project Manager	ESER 2020 Disaster Response Facilities	(628) 652-6630	<a href="mailto:dan.mauer@sfgov.org">dan.mauer@sfgov.org</a>

Earthquake Safety and Emergency Response Bond Program  
(ESER 2010, 2014 & 2020)

Attachment 2 – Schedule

EARTHQUAKE SAFETY EMERGENCY RESPONSE BOND PROGRAM  
Timeline and Schedule

Description	BUDGET	Schedule		FY 17/18				FY 18/19				FY 19/20				FY 20/21				FY 21/22				FY 22/23				FY 23/24			
				July 1, 2017		June 30, 2018		July 1, 2018		June 30, 2019		July 1, 2019		June 30, 2020		July 1, 2020		June 30, 2021		July 1, 2021		June 30, 2022		July 1, 2022		June 30, 2023		July 1, 2023		June 30, 2024	
		Start	Completion	1st Qtr. 9/30/17	2nd Qtr. 12/31/17	3rd Qtr. 3/31/18	4th Qtr. 6/30/18	1st Qtr. 9/30/18	2nd Qtr. 12/31/18	3rd Qtr. 3/31/19	4th Qtr. 6/30/19	1st Qtr. 9/30/19	2nd Qtr. 12/31/19	3rd Qtr. 3/31/20	4th Qtr. 6/30/20	1st Qtr. 9/30/20	2nd Qtr. 12/31/20	3rd Qtr. 3/31/21	4th Qtr. 6/30/21	1st Qtr. 9/30/21	2nd Qtr. 12/31/21	3rd Qtr. 3/31/22	4th Qtr. 6/30/22	1st Qtr. 9/30/22	2nd Qtr. 12/31/22	3rd Qtr. 3/31/23	4th Qtr. 6/30/23	1st Qtr. 9/30/23	2nd Qtr. 12/31/23	3rd Qtr. 3/31/24	4th Qtr. 6/30/24
EMERGENCY FIREFIGHTING WATER SYSTEM (EFWS)																															
EFWS (EARTHQUAKE SAFETY EMERGENCY RESPONSE 2010)																															
June 2015	102,400,000	07/01/09	09/26/18																												
Baseline	102,400,000	07/01/09	12/30/21																												
Current Projection	102,400,000	07/01/09	12/30/21																												
EFWS (EARTHQUAKE SAFETY EMERGENCY RESPONSE 2014)																															
June 2015	54,065,000	11/06/14	12/31/20																												
Baseline	54,347,209	11/06/14	12/30/22																												
Current Projection	54,347,209	11/06/14	12/30/22																												
EFWS (EARTHQUAKE SAFETY EMERGENCY RESPONSE 2020)																															
June 2015	n/a	n/a	n/a																												
Baseline	153,000,000	07/01/21	12/29/28																												
Current Projection	153,000,000	07/01/21	12/29/28																												
EMERGENCY FIREFIGHTING WATER SYSTEM (EFWS) SUB-TOTAL																															
June 2015	156,465,000																														
Baseline	309,747,209																														
Current Projection	309,747,209																														