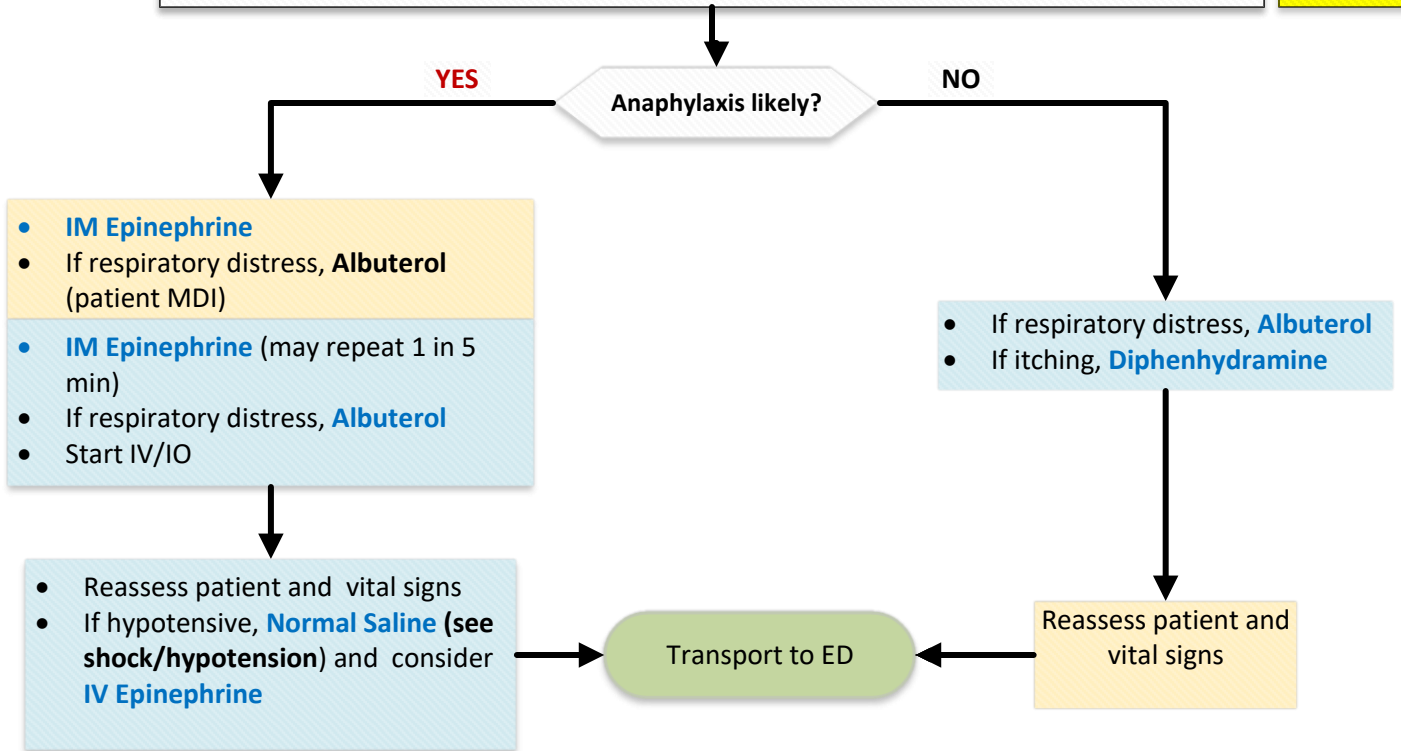


ALLERGIC REACTION & ANAPHYLAXIS



DRAFT
PUBLIC
COMMENT JULY
2026

- Assess ABC's, **vital signs**, **Oxygen** PRN (goal >94%)
- Assessment including: oropharyngeal edema, wheezing/respiratory effort, adequacy of perfusion
- Obtain history: history of allergies, recent exposure to known or likely allergen, medication prior to EMS (e.g. epinephrine auto injector)



Anaphylaxis: is likely where acute onset of symptoms from multiple of the following system, particularly with a recent known allergen exposure:

- Skin: hives, itching, flushing, mottling, facial swelling
- Mucosa: lip/tongue/uvular swelling, infants may have repetitive lip licking
- Gastrointestinal: severe crampy abdominal pain, repetitive vomiting, diarrhea
- *Respiratory: wheeze, stridor, hypoxia, difficulty swallowing, hoarse voice or cry (infants)
- *Cardiovascular: hypotension, syncope, unexplained change in mental status, persistent unexplained tachycardia

Comments

- Life threatening anaphylaxis is characterized by respiratory and or cardiovascular* involvement and may occur **without** skin/ mucosa involvement.
- Early administration of IM epinephrine significantly improves patient outcomes in anaphylaxis including decreased mortality and lower hospitalization rates.

Effective: xxxxx
Supersedes: NEW