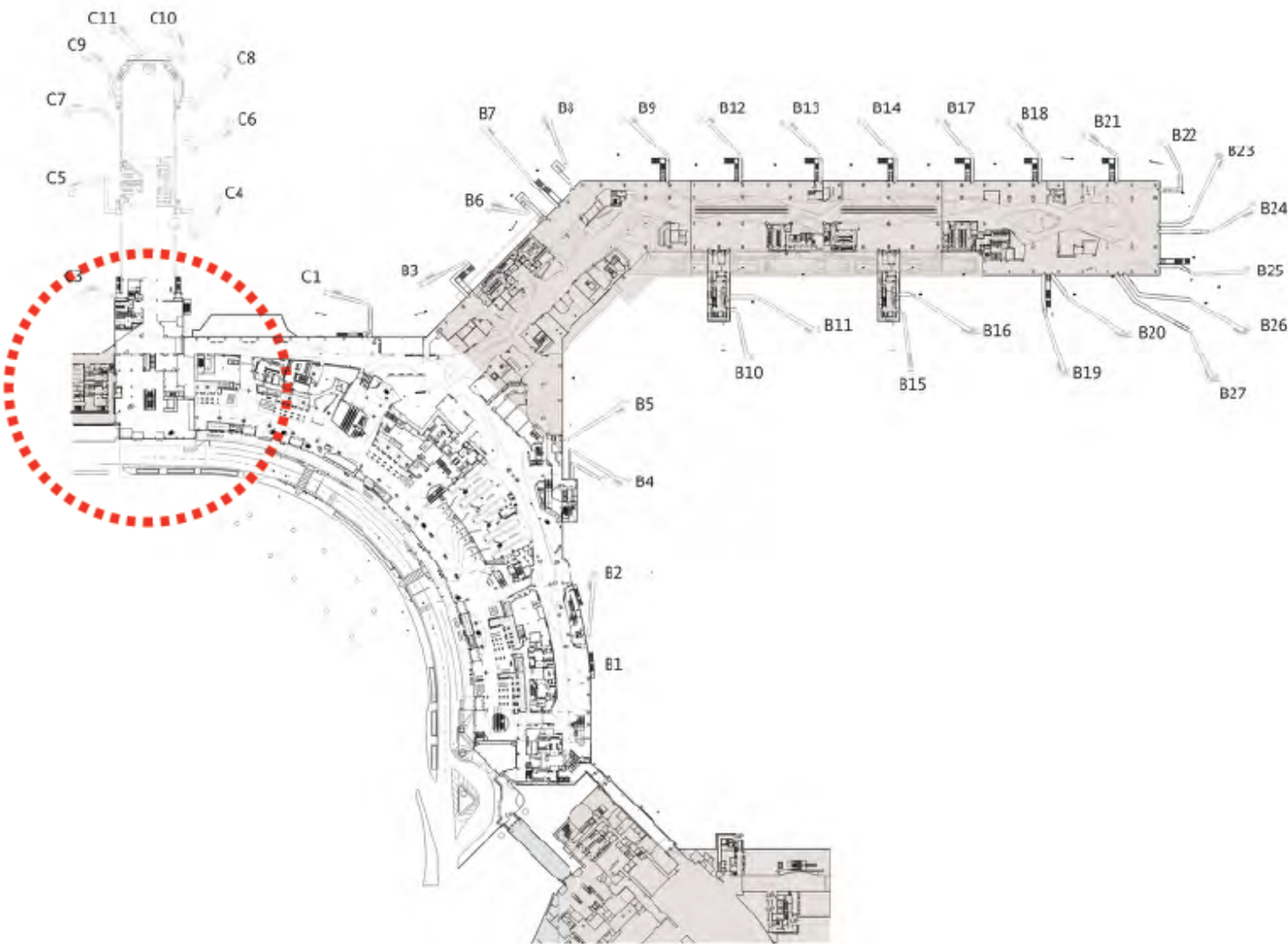


Terminal 1 BAC Art Relocation

August 10, 2022

Terminal 1

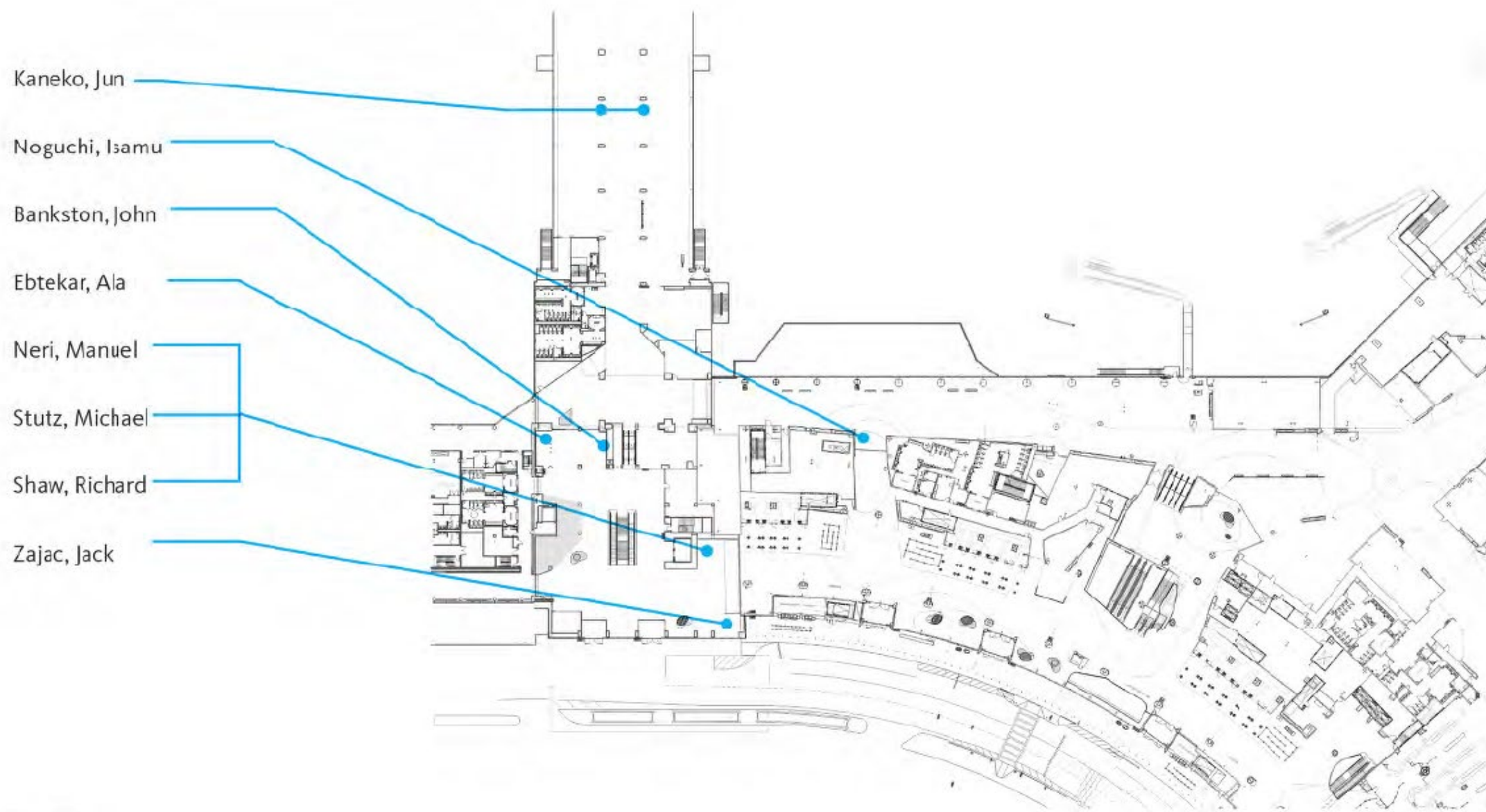
Departures Plan



The majority of the artwork in this review is on the Departures Level of Board Area C, with the exception of the Noguchi sculpture located in Terminal 1 North and the Adams artwork on the Arrivals Level of BAC.

Proposed Artwork Locations - Departures

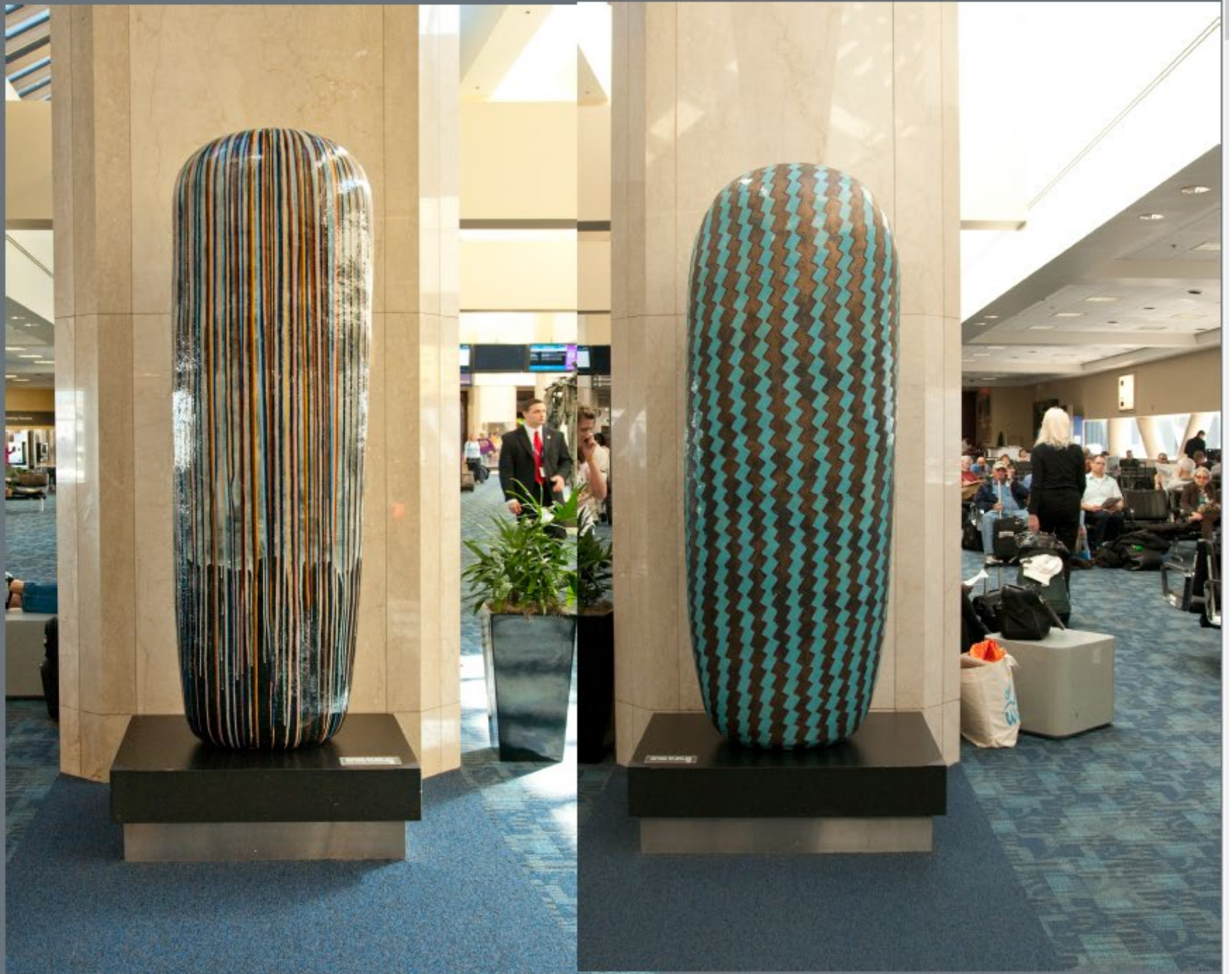
overview T1N and BAC

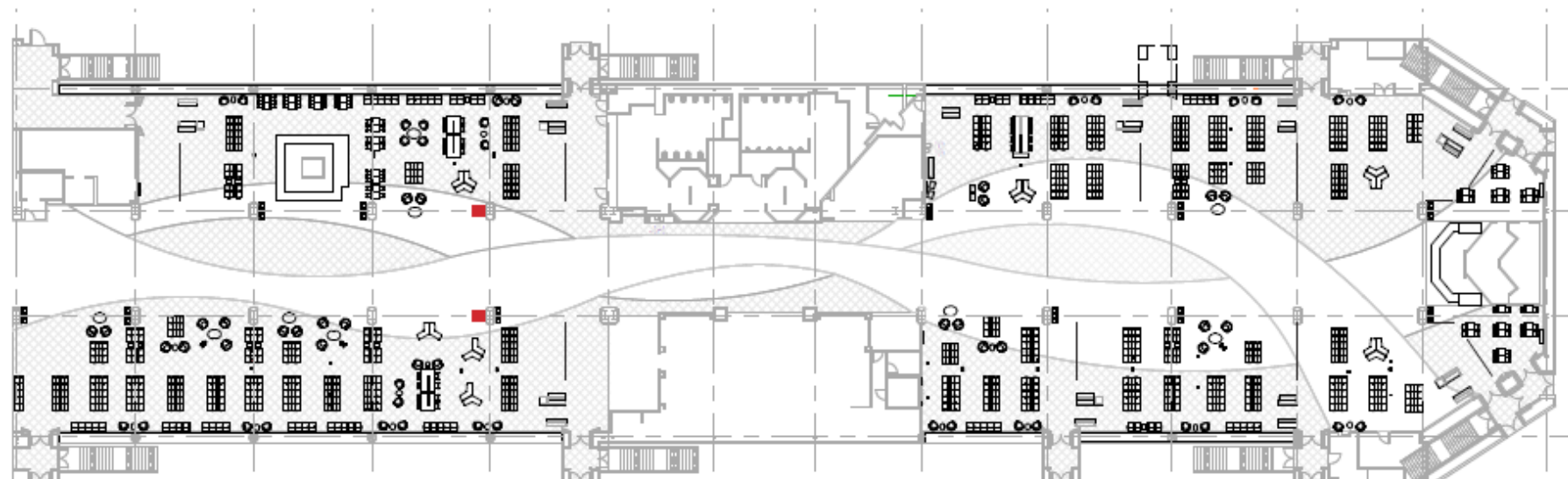


BAC Pier

Jun Kaneko,
Untitled (Dango), 2000
Glazed Ceramic 88 x 25 x 17 in.
SFAC ID: 2004.2

Untitled (Dango), 2002
Glazed Ceramic 82 x 31 x 18 in.
SFAC ID: 2004.3





SIDE - 21'-0" circulation width

Kaneko, Jun

Artwork sizes: 88" (H) x 25" (W) x 17" (D)
82" (H) x 31" (W) x 18" (D)

Vitrine lid size: No Vitrine

Base size: 16" (H) x 36" (W) x 36" (D)

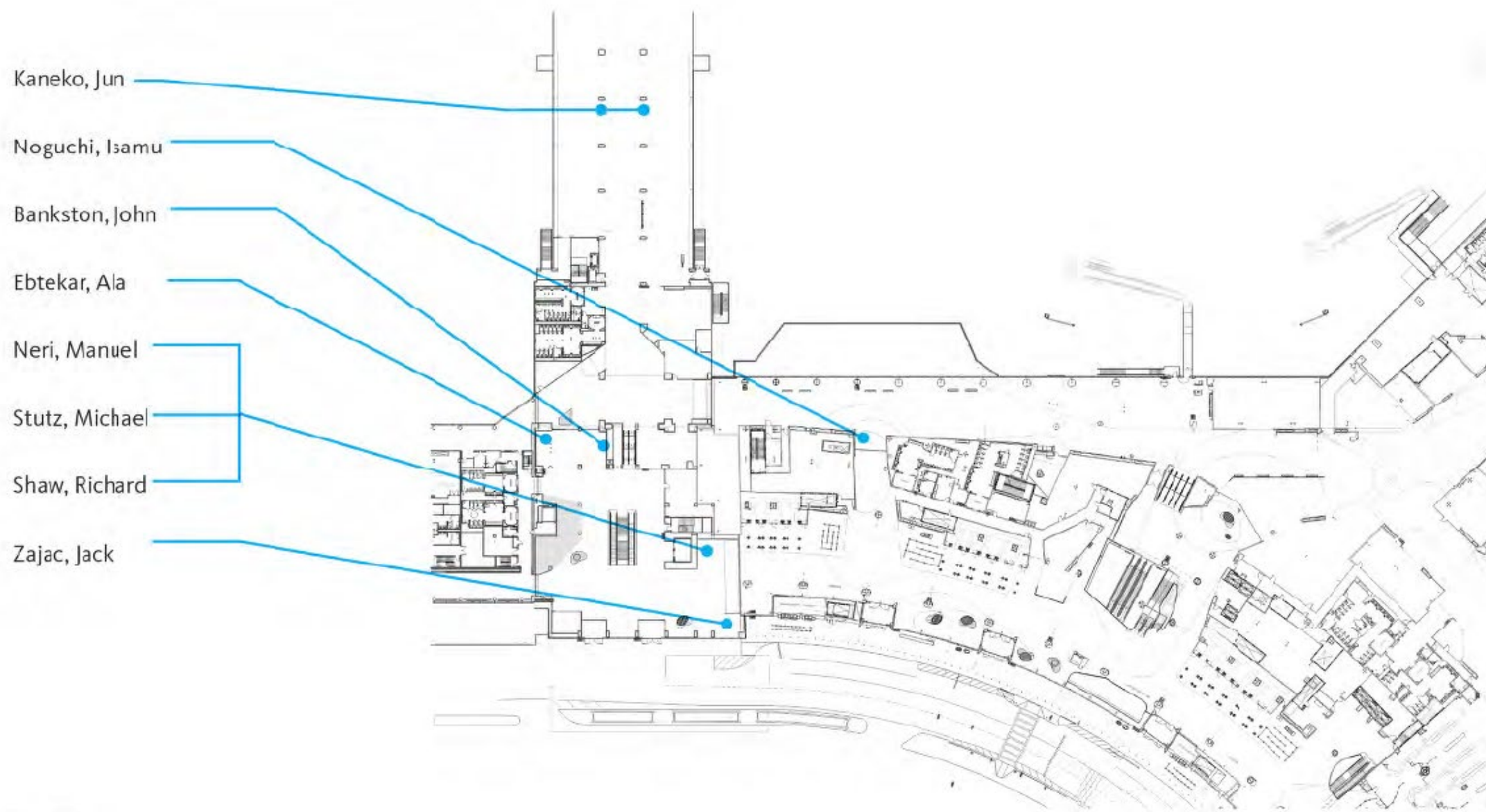
Artwork material: glazed ceramic

Artwork weight: 830-850 lbs each



Proposed Artwork Locations - Departures

overview T1N and BAC





Artwork Locations - Departures

Isamu Noguchi

Figure, 1945

Cast bronze with black patina, 61" H X 21 1/2" W X 15 1/4" D

SFAC ID: 1980.7

Noguchi, Isamu

Artwork Size: 61(H) x 21.5 (W) x 15.25 (D) inches

Vitrine size: 75 (H) x 36 (W) x 30 (D) inches

Base size : 15 7/16 (H) x 36(W) x 30 (D) inches



T1 - North Inglenook with proposed artwork



Proposal

- all current T1 finishes to remain
- revised blackened steel on post-security to compliment the sculpture



John Bankston
Setting the Scene, 2015
Oil on linen
SFAC ID: T2018.41

Oh?, 2015
Oil on linen
SFAC ID: T2018.40



BAC & T1N

Ala Ebtekar
Zenith (VII), 2017
cyanotype on canvas
SFAC ID: T2018.34



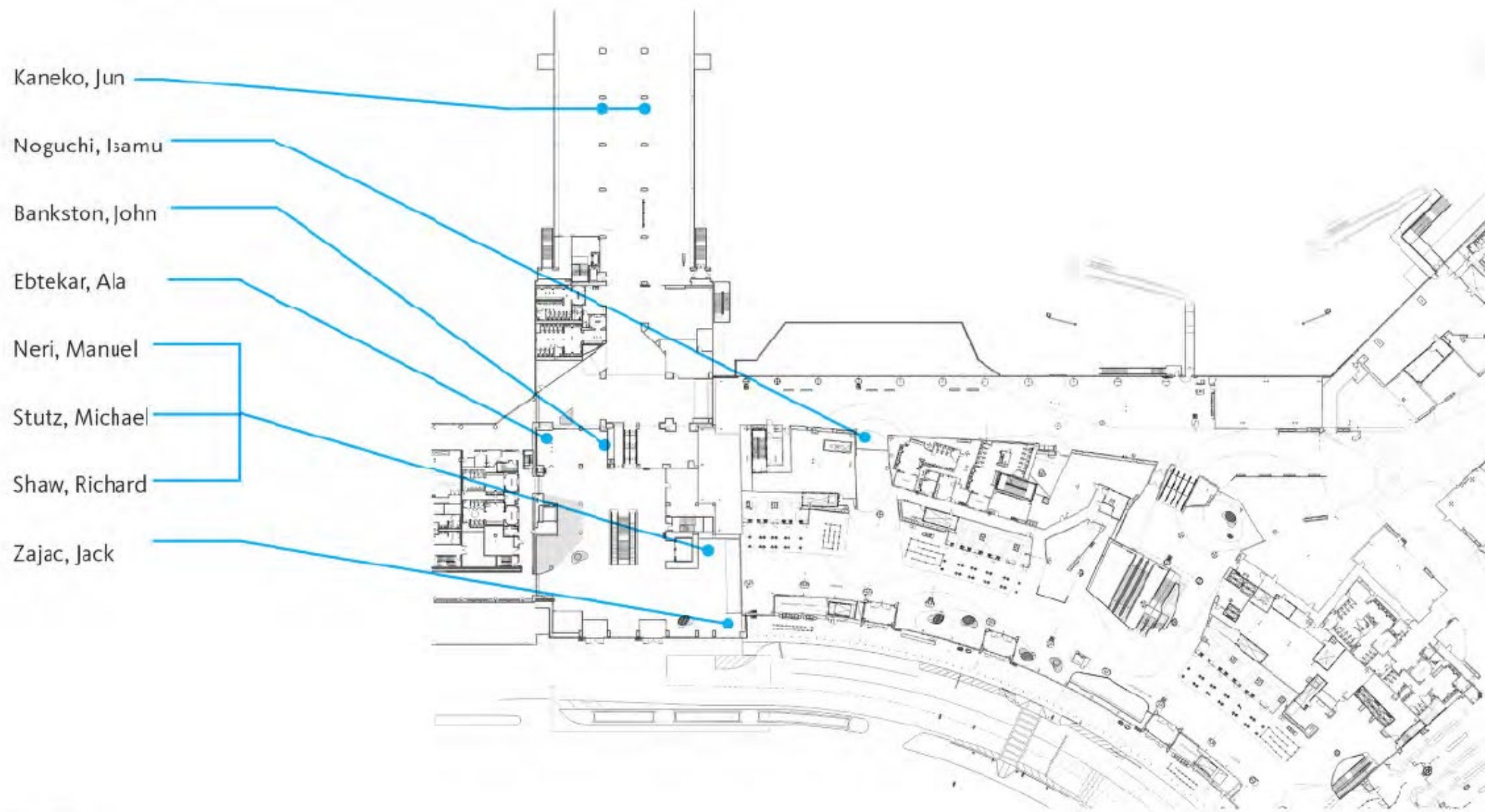
framed artwork



detail of the artwork - cyanotype and paint

Proposed Artwork Locations - Departures

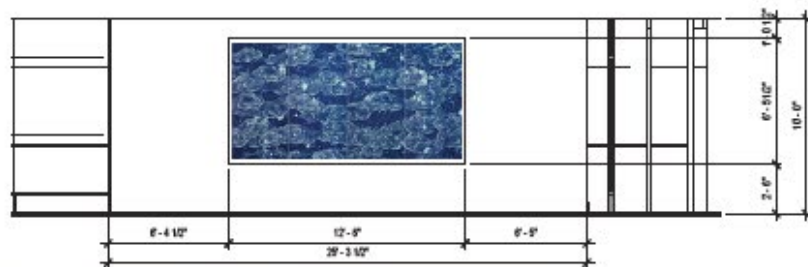
overview T1N and BAC



Ebtekar, Ala

Artwork Size: 77 1/4 (H) x 150 1/8 (W) x 4 (D) inches

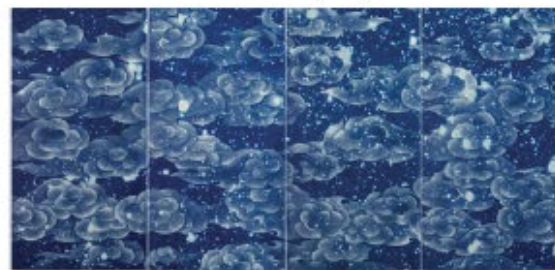
Artwork is framed (see appendix for photos from art viewing)



Elevation - suggested artwork mounting height by SFAC

BAC Plaza Meet & Greeter

with proposed artwork



Proposed Furniture Study

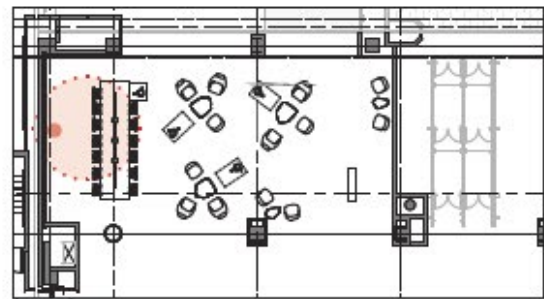
- all existing furniture to be replaced at Meet & Greet
- existing Furniture to be relocated to BAC Pier
- replace furniture using T1 furniture color pallet and design standards
- bottom of artwork in-line with the top edge of the table - table height : 30"

Proposed Material

- Xorel in the niche behind the painting
- existing TR-01 terrazzo and existing white phenolic panels, PT-1 gyp
- 10'-0" ceiling height



3D View



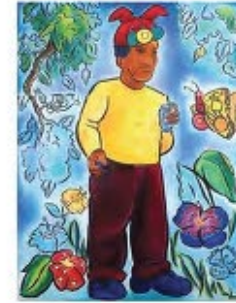
key plan

Bankston, John

Artwork Sizes (2): 40(H) x 30 (W) inches

Vitrine size: requested a optimum frame, SFAC will provide details and final specs.

BAC Plaza - Meet & Greet - bench seating and chairs



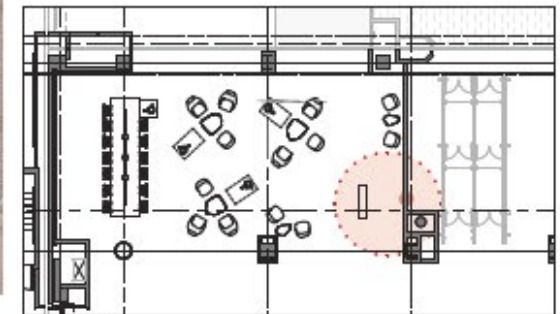
3D View

Proposed Furniture Study

- all existing furniture to be replaced at Meet & Greet
- existing furniture to be relocated to BAC Pier
- replace furniture using T1 furniture color pallet and design standards
- bench in front of Bankston artworks

Proposed Material

- Xorel to frame the paintings, white phenolic panels on the sides
- existing TR-01 floor
- 10'-0" ceiling height





Manuel Neri
Mujer Pegada No. 4, 1985
 Marble
 SFAC ID: 1986.58



Michael Stutz
Cardboard Kore, 2005
 Mixed media paper, acrylic
 SFAC ID: 2005.8



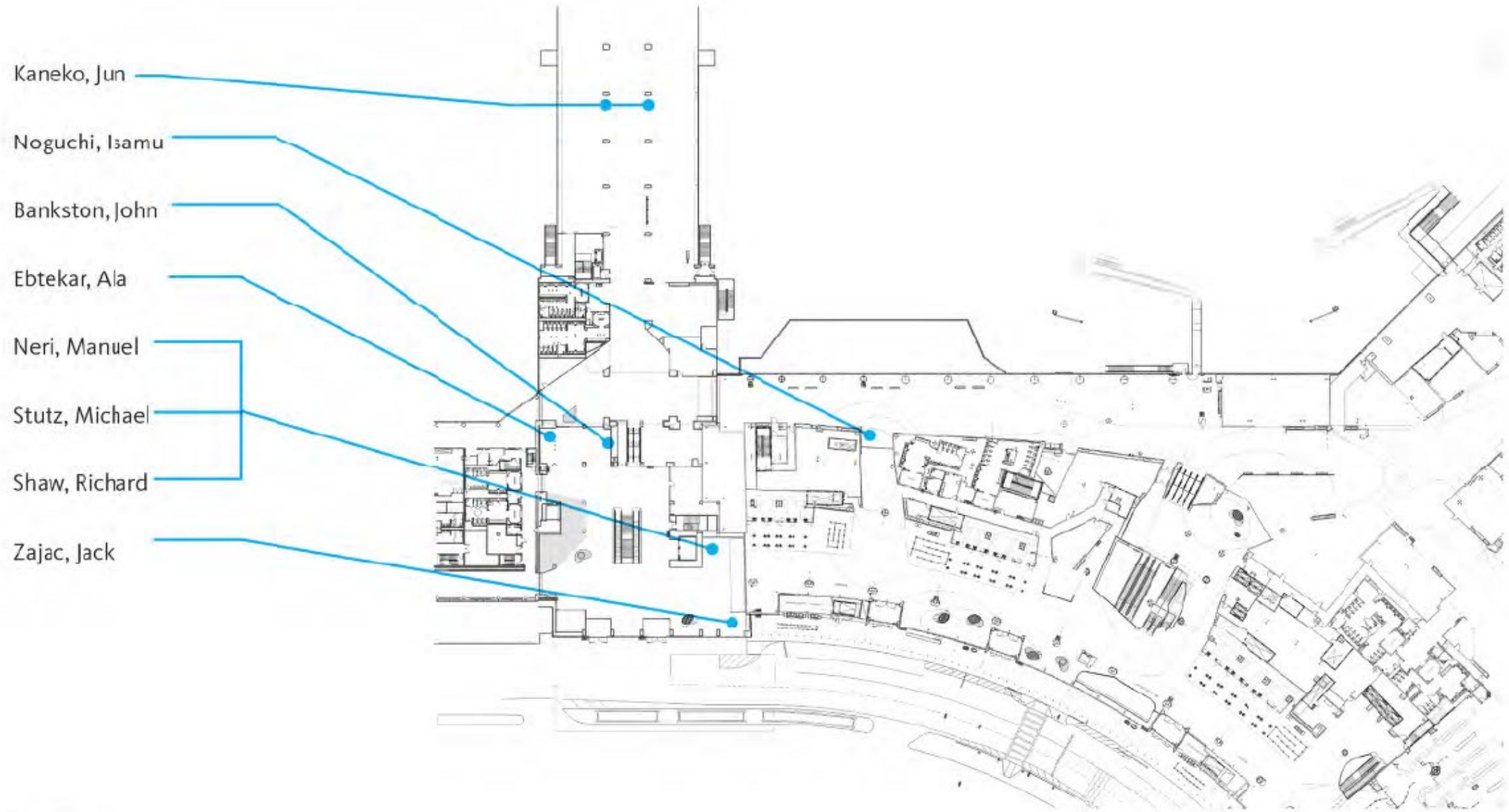
Richard Shaw
Martha H., 2006
 Glazed Porcelain
 SFAC ID: 2007.3

BAC & T1N

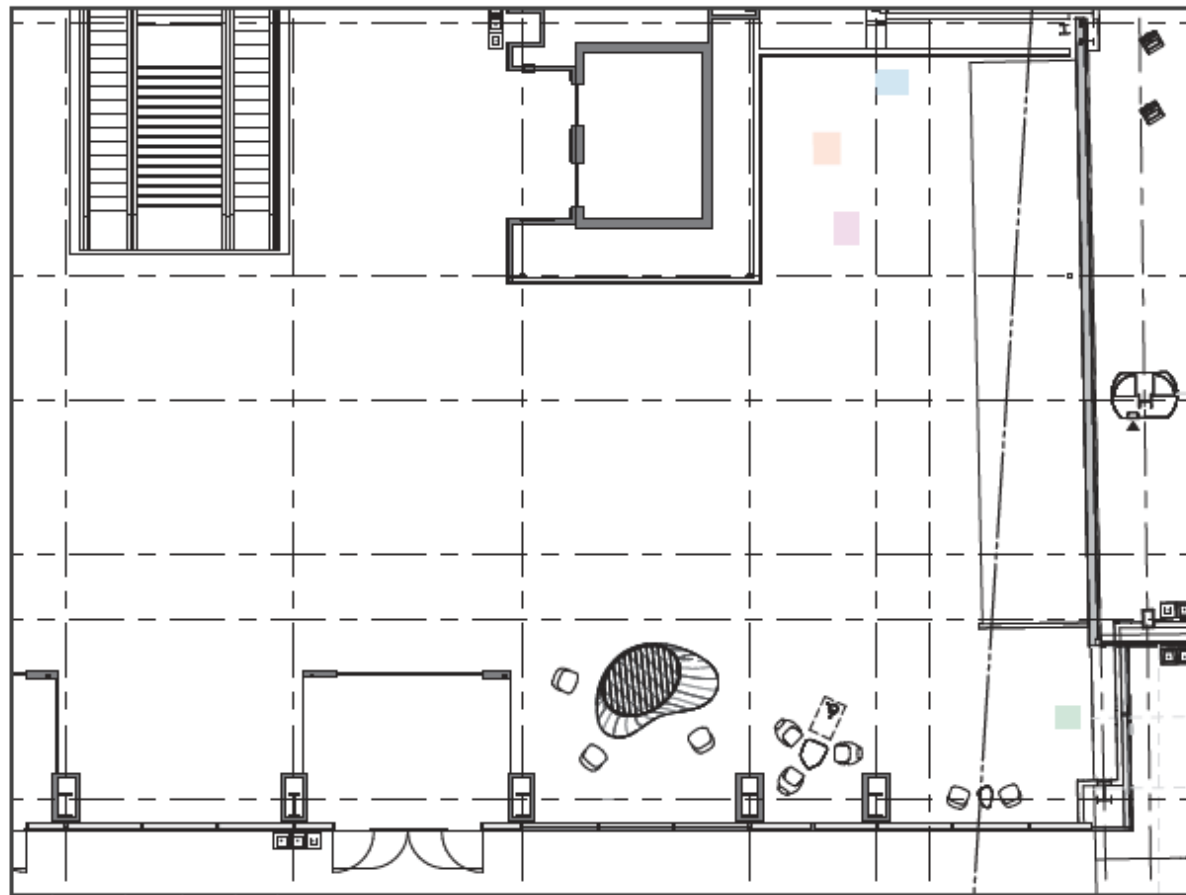
Transition

Proposed Artwork Locations - Departures

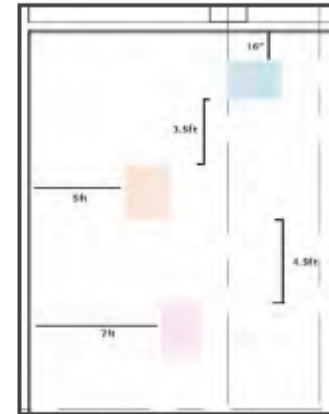
overview T1N and BAC



T1 North - BAC Transition - Sculpture Locations



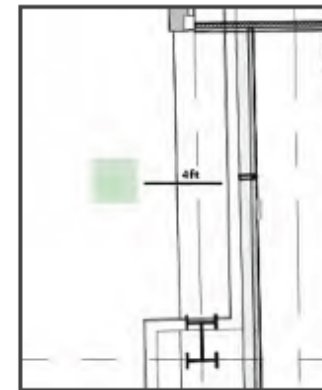
sculpture locations in plan



dimensions from wall

Neri, Stutz, Shaw Sculpture Location

- SFAC worked to space the sculptures in plan to make the sculptures more inviting by offering enough space for visitors to walk behind/around them if they choose
- Neri is best viewed from 180-degrees and not from behind, the sculpture has been placed 16" to allow for cleaning behind it but not sitting.
- SFO Museum and SFAC do not recommend one vitrine.



dimensions from wall

Zajac, Jack Sculpture Location

- 4' from the wall to allow breathing room but not enough space to sit behind it
- artwork is protected in niche
- artwork fills the scale of the niche
- glass guardrail for open side of ramp
- the wall behind the ovoid can be used for mayor's welcome with its surface being more visible from the exit lane

LEGEND

Light Blue Neri, Manuel

Orange Stutz, Michael

Pink Shaw, Richard

Green Zajac, Jack

T1 North - BAC Transition - 3D View

with proposed artwork

Neri, Manuel

Artwork Size:
69 3/4 (H) x 22 3/4 (W) x 10 1/2 (D) inches
Vitrine size: 75 (H) x 36 (W) x 26 (D) in.
Artwork materials : carerra marble

Stutz, Michael

Artwork Size: 68 (H) x 20 (W) x 18 (D) inches
Vitrine size: 75 (H) x 36 (W) x 30 (D) in.
Artwork materials : cardboard

Shaw, Richard

Artwork Size: 63 (H) x 21 (W) x 16 (D) inches
Vitrine size: 75 (H) x 36 (W) x 26 (D) in.
Artwork materials : porcelain



Netrual Backdrop Proposal

- white phenolic panels behind the artwork, introduce standard T1 colors and pattern further from the sculptures
- 9' high phenolic panels, gyp PT-1 painted on the walls above
- standard white ceiling tiles
- ceiling height : 25'-1"
- existing signage is in the process of being reconsidered



3D View

August 10, 2022



key plan



BAC & T1N

Transition

Jack Zajac
Falling Water Santa Cruz II. 2005
Bronze with granite base
95" H X 8 1/2" W X 8 1/2" D
SFAC ID: 1986.17

Zajac, Jack

Artwork Sizes: 95 (H) x 8.5 (W) x 8.5 (D) inches

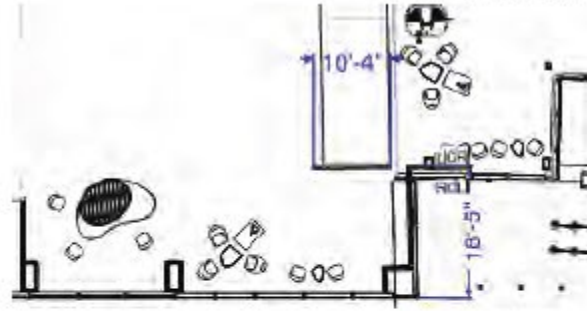
Vitrine size: 105 (H) x 24 (W) x 24 (D) inches

Base size: 15 7/16 (H) x 24 (W) x 24 (D) inches

Artwork material : bronze w/silver gilding patina

Dimensions

- length of back wall : 18'-5"
- length of short wall : 10'-4"
- height of glass wall : 3'-0"



T1 North - BAC Transition - 3D View

art located in niche



Proposal

- standard curb side wall condition
- PT-01 gyp with stainless steel base
- glass 30" wall with shoe detail on exposed side of ramp
- existing signage is in the process of being reconsidered
- standard white ceiling tile
- ceiling height : 25'-1"



3D View

key plan

Proposed Artwork Locations - Arrivals

overview T1N and BAC

Permanent Wall - Artwork

Adams, Gloria Cozzo

Artwork Location 

Permanent Wall Location



- apply typical BAC finishes,
phenolic panel, gyp, baseboard

Temporary Wall Location

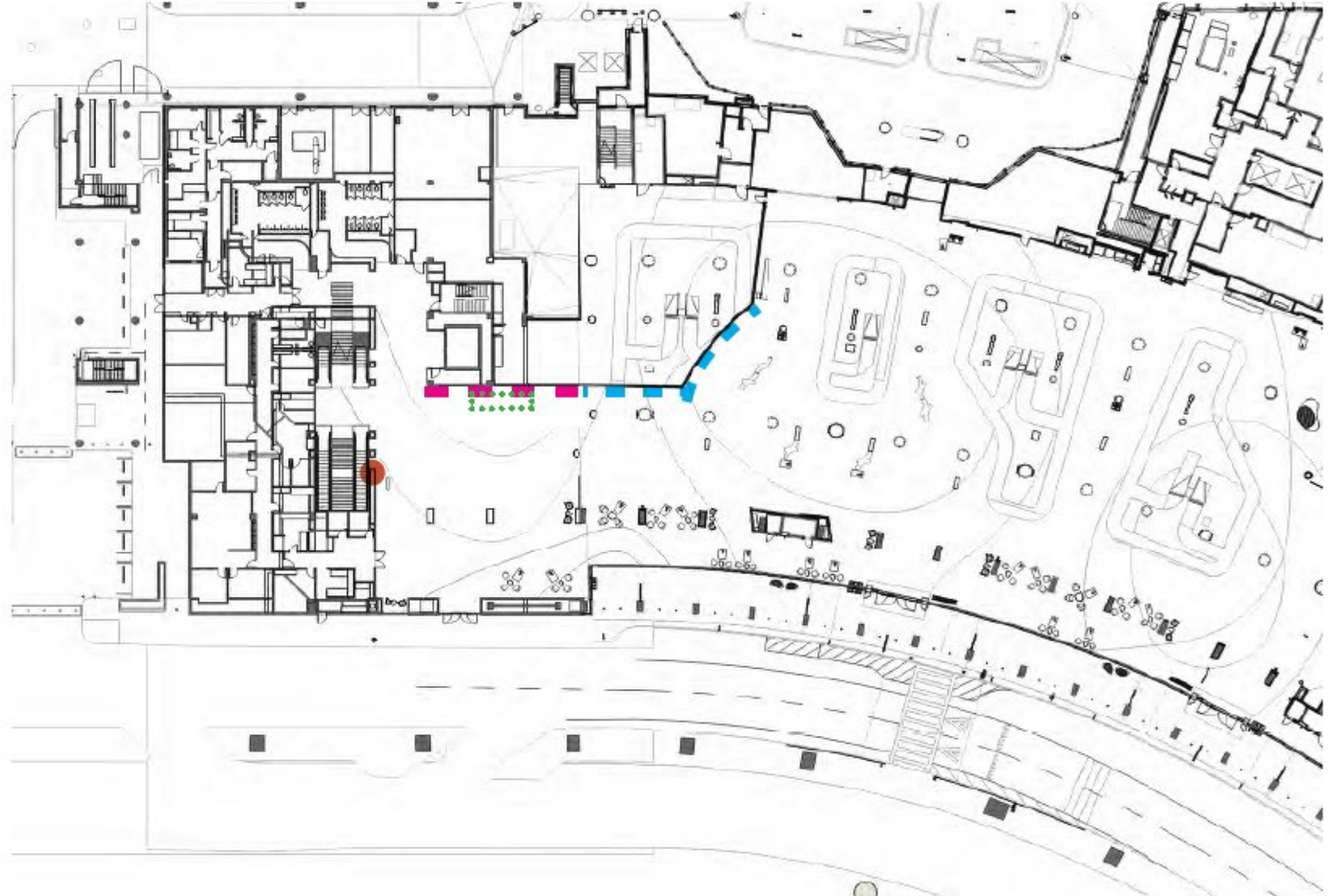


- a graphic mural in style of the
Children's Play Area with icons
symbolic of SF

Signage Location



- wall-hung dashboard





Gloria Cozzo Adams

Cityscape #33, 1977

Acrylic and ink, 48 1/2 x 72 1/2 in.

SFAC ID: 1977.33

Artwork Locations - Arrivals

Adams, Gloria Cozzo

Artwork Size: 48.5" (H) x 72.5" (W)

Artwork material : acrylic and ink on canvas



Arrivals - BAC from T1N

with proposed artwork



Proposal

- Xorel backing to frame artwork with white phenolic panels next to the Xorel.
- stainless steel base
- CP-01 & CP-04 floor
- typical white ACT and gyp ceiling
- existing signage is in the process of being reconsidered
- proposing to infill one of the openings along the escalator

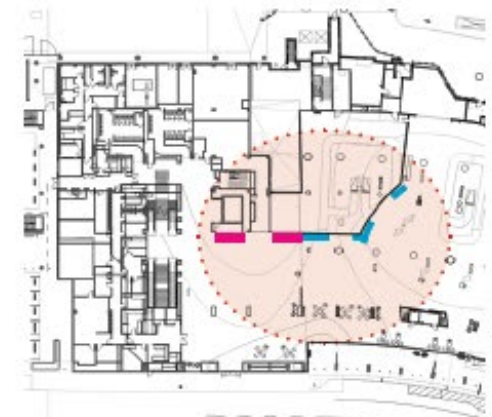


Temporary Wall - Arrivals - BAC from T1N



Proposal

- a graphic mural in style of the Children's Play Area with landmarks symbolic of SF
- rest of the wall to be painted PT-1 with a rubber base
- CP-01 & CP-04 floor
- typical white ACT and gyp ceiling
- yellow painted ceiling feature above
- existing signage is in the process of being reconsidered
- signage along permanent wall

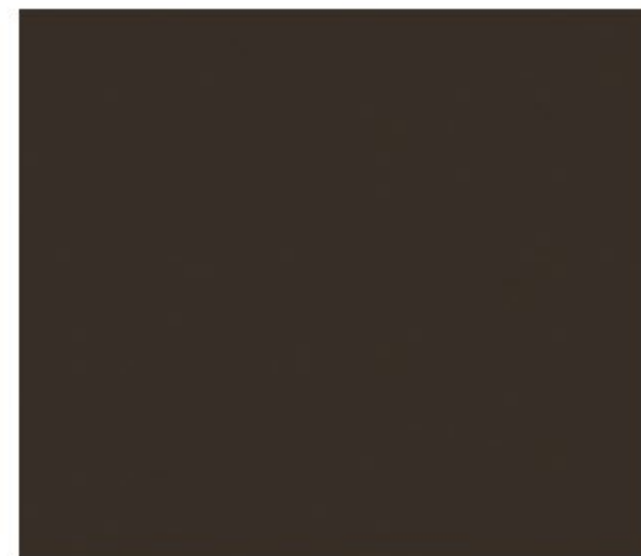


Vitrine / Base Design

ideation sketches provided by SFO

dimensions to be revised for each artwork
vitrine to be produced with
Tru View Optium Acrylic

Main Corian Color: Deep Espresso



Kick board Corian Color: Deep Titanium

