

# Department Budget Submission Checklist

To be completed by: All departments.

Instructions: Submit this completed cover sheet with your budget submission and ensure all applicable forms below are included with your submission.

## Department Name: Assessor-Recorder

- ☒ **Summary of Major Changes:** Completed "Form 1A: Summary of Major Changes" explaining major changes submitted in department's budget proposal.
  - ☒ **Proposed GF target reductions**
  - ☒ **Department Budget Summary:** Completed "Form 1B: Department Budget Summary."
- ☒ **Revenue Report:** Completed "Form 2A: Revenue Report."
- ☒ **Fees & Fines:** Completed "Form 2B: Fees & Fines."
- ☐ **Cost Recovery:** Completed "Form 2C: Cost Recovery."
- ☒ **Expenditure Changes:** Completed "Form 3A: Expenditure Changes."
- ☐ **Deappropriations from prior years' budget:** Indicate if these are included in your submitted budget, and please explain in the expenditure changes form "Form 3A: Expenditure Changes."
- ☒ **Position Changes:** Completed "Form 3B: Position Changes."
- ☐ **Equipment & Fleet Requests:** Completed "Form 4A: Equipment Request" and "Form 4B: Fleet
- ☐ **Minimum Compensation Ordinance:** By checking this box, the department confirms that the effects of the MCO in contracting have been considered as part of the budget submission.
- ☐ **Proposition J Description, Summary, City Cost, Contract Cost:** Required for all existing and new Prop
- ☒ **Interdepartmental Services Balancing:** Included Excel download of Department - IDS Form Balancing Report from BFM Reporting.
- ☒ **Organizational Charts:** Submission contains updated position-level organizational charts for your department, with indication if the position is filled (F) or vacant (V). Organizational charts also reflect
- ☐ **New Legislation:**
  - ☐ Accept & Expend (A&E) legislation for new grants included in the department budget submission
  - ☐ Included draft legislation that department would like to submit with the budget; or,
  - ☐ Draft legislation in progress at this time. A description of the proposed changes is included in the "Summary of Major Changes" table. A draft will be provided to the Mayor's Office by
- ☒ **Other Requests:** Submitted requests for the following item:
  - ☒ COIT
  - ☐ Capital

### For Chief Financial Officer/Budget Manager:

I have reviewed the attached budget submission and affirm that all applicable forms checked off above are either included in this submission or have been submitted through the proper online forums.

Full Name: Emily Alt

Signature: \_\_\_\_\_



**BUDGET FORM 1A: Summary of Major Changes  
FY 2025-26 and FY 2026-27**

BUDGET FORM 1A: Summary of Major Changes

FY 2025-26 and FY 2026-27

DEPARTMENT: ASR Assessor / Recorder

	<b>Major Changes</b>	<b>Department Response to Major Changes</b>
<b>Summary</b>	<p>What major changes is the department proposing? Clearly describe each change, including the fiscal impact of the proposal. Alternatively, you may submit a 1-2 page memo with your budget submission summarizing the major changes.</p>	<p>The Department's prosed two-year budget totals \$42.4 million in both FY25-26 and FY26-27. Major budget changes include reduced expenditures where possible, \$21K travel and training, \$97K subscriptions, and \$9K materials and supplies. ASR also decreased personnel budget by \$824K to align with anticipated hiring and employee turnover.</p> <p>ASR revenue has been steadily declining as document recording volumes have decreased. In this budget cycle, ASR is reducing revenue budget from baseline by \$1.3M in FY25-26 and \$1.1M in FY26-27 to better align with projected revenue. General Fund revenue budget decreases by \$706K in FY25-26 and \$628K in FY26-27, while Recorder special funds decreases by \$543K and \$498K. Total revenue is \$2.3M in FY25-26; ASR is projecting a slight recovery in revenue in FY26-27 for a total revenue of \$2.5M. These projections are based on ASR's monthly revenue reporting, historic trends and assumptions around market dynamics.</p> <p>The expenditure reductions totaling \$950K are offset by increased software licensing fees and maintenance costs and revenue reductions, resulting in net zero changes to our baseline General Fund budget. ASR is managing the non-General Fund revenue reduction by increasing the use of fund balances, using carryforward budget to cover non-labor costs, and shifting labor costs from these self-supporting fund sources as-needed.</p>
<b>General Fund Target</b>	<p>What ongoing spending reductions did the department make to meet its General Fund target? What are the high-level programmatic, operational, or staffing impacts of the proposed reductions? Is the department proposing any increases in revenues to meet target? For non-GFS departments, please describe your strategy for absorbing cost increases or revenue reductions without adding new costs to the General Fund</p>	<p>ASR is not proposing to meet the 15% target. As the department responsible for enrolling property value that generates 1/3 of the City's General Fund revenue, at a time when every general fund dollar is needed and when healthy cash flow is imperative, it is vital that we have the staff necessary to continue actively enrolling all value fairly and on time. When we don't have the resources necessary to complete our work, the City and County of San Francisco experiences delays and possibly even permanent losses in the amount of its general fund revenue. Unfortunately, we currently are not fully staffed to enroll value timely and are carrying an assessment backlog of 6,300 items. If we have to reduce staff in the near term, this backlog number would grow and general fund revenues would need to be adjusted downward as we further detail in the paragraphs below.</p> <p>ASR's proposed General Fund budget is \$40.6M, of which \$32.5M is salary and benefits. The \$8.1M non-labor budget includes \$4.0M in work orders to other city departments, \$2.9M in non-personnel that primarily pays for our annual licenses for IT systems that are core to our business workflow, and \$48K for materials and supplies. The proposed budget also includes a one-time COIT investment of \$1.2M. We do not have non-labor line items that would generate significant enough savings to meet target.</p> <p>In order to meet the \$5.3M target, ASR would need to eliminate twenty-nine (29) positions. ASR would need to lay off twenty (20) recently hired staff, including our new appeals team, as well as pause nine (9) hires that we are actively working to fill to meet the significant increase in our assessment appeals workload. Our staff are managing a workload of over 25,000 assessment assignments while open assessment appeals have ballooned to almost 12,000. All of these twenty-nine (29) positions are essential to our core business function. Any reduction will lead directly to our Office enrolling less assessed value this year and forward until the workload recedes.</p> <p>Without these 29 positions, our processing of regular assessment production items would decrease to near zero resulting in an even more dramatic rise in the assessment backlog. We project the backlog would still be rising in FY29-30, when it could reach over 55,000 items, likely the highest backlog ever recorded in the City's history. A backlog of this magnitude will not only impact tens of thousands of taxpayers, it will also create real risk of not meeting 4-year statutory deadlines on all assessable events resulting in the irrevocable loss of one year of associated value.</p> <p>The backlog is already growing, despite organizational changes made to boost assessment productivity. The percentage of all Changes in Ownership and New Construction work items completed has fallen from over 99% for FYs 19-21 to 91% in FY21-22, 77% in FY22-23, to 74% last fiscal year. This decline is directly tied to the unprecedented increase in workload driven by newly filed appeals. We calculate that on average, each 10% decrease in production results in \$10-12M of supplemental and escape tax revenue that is delayed for collection a full fiscal year.</p> <p>In FY18-19, the office eliminated a historic backlog that had plagued it for over a decade. In FY20-21 a backlog returned and has since grown to 6,300 items. We calculate that on average, each of these work items produces roughly \$7K of revenue, such that the most recent backlog represents nearly \$45M in delayed revenue. Without our currently approved staffing, the backlog will grow precipitously and could persist for longer than the decade it took to clear the increased backlog following the Great Recession. Based on prior experience and extensive modeling, we further project that these cuts could result in our Office being unable to work all current and projected appeals over the next 3-5 years with associated loss of revenue. We project that the backlog alone will double next year to over 14K at a cost of over \$98M delayed, reach 30K in FY26-27 at a cost of nearly \$210M, and could climb to over 55K at a cost of nearly \$385M by FY29-30. Should we retain the 29 positions, the backlog is otherwise projected to peak at 19K in FY26-27, decreasing to under 3K by FY29-30.</p> <p>While we recognize the tough decisions that must be made at this time, we firmly believe that the financially prudent action with respect to this Department is to maintain the current staffing resources in place and planned. We hope you agree this submittal is in keeping with the spirit of these latest budget instructions, which are clearly aimed at buoying the City and County's budget.</p>
<b>Positions</b>	<p>What position changes is the department proposing? How did the department prioritize core service delivery while meeting the General Fund reduction target or NGF revenue reductions? How does the department plan to utilize or eliminate any vacant positions in their budget? Highlight any changes to FTE levels, budgeted attrition, temporary salaries, substitutions, and provide details in Form 3B.</p>	<p>ASR's current FTE is 184.11 with 19.34 attrition FTE FY25-26 projected FTE is 187.52, an increase of 3.4 FTE from current year; decrease of 4.4 FTE from base FY26-27 projected FTE is 183.78, a decrease of 3.7 FTE from previous year; decrease of 6.7 FTE from base</p> <p>Attrition ASR has increased its attrition based on maintaining 9 vacancies and estimated natural attrition rates of 5.1% and 6.7% over the next two years (an average of 5.8%) to maintain a baseline budget. Attrition increased by \$934K to \$3.2M in FY25-26 and by \$1.7M to \$3.9M in FY26-27. Attrition savings equates to 16.7 FTE in FY25-26 (an increase of 4.9 FTE from base) and 20.4 FTE in FY26-27 (an increase of 8.7 FTE from base).</p> <p>Position Changes The department has submitted 18 position changes: 8 substitutions and 10 reassignments. Three proposed reassignments across the two fiscal years are to move Recorder staff to and from self-supporting funds (Recorder revenues) as needed to limit the impact on General Fund and to not overdraw fund balance, ensuring there is budget to support Recorder expenditures in future fiscal years. The remaining seven proposed reassignments are to reflect the position's actual functional Division; two of which are to move staff from project-based COIT-funded positions to General Fund as ASR operationalizes the Property Assessment System Project, SMART. Two proposed substitutions are to reflect existing employee's actual job class and duties. Three substitutions are to downgrade positions to restructure the management of the Real Property division and to support the operationalization and maintenance of the new SMART system. The three remaining proposed substitutions are to update classifications to align with current duties of these positions.</p>

**BUDGET FORM 1A: Summary of Major Changes  
FY 2025-26 and FY 2026-27**

BUDGET FORM 1A: Summary of Major Changes

FY 2025-26 and FY 2026-27

DEPARTMENT: ASR Assessor / Recorder

	Major Changes	Department Response to Major Changes
<b>Expenditures</b>	<p>What major spending changes is the department proposing? How has the department evaluated grant allocations, non-personnel expenditures and contractual services for cost-effectiveness and efficiency? Please provide information about any changes that affect core services and functions. Highlight any changes related to major initiatives as noted in the Summary section and provide details in Form 3A.</p>	<p>ASR's expenditures decreased by \$946K in FY25-26 and \$927K in FY26-27, due to non-labor reductions and increased attrition. This reduction of expenditures is matched with an equal decrease in revenue due to ASR's revenue steadily declining as document recording volumes have decreased. Expenditure budget is \$42.4M in both FY25-26 and FY26-27.</p> <p>General Fund: The Department's proposed General Fund budget decreases by \$706K in FY25-26 and by \$628K in FY 26-27 from base. ASR reduced expenditures where possible, including for \$21K travel and training, \$97K subscriptions and \$9K materials and supplies. ASR also decreased personnel budget by \$824K by increasing attrition to align with anticipated hiring and employee turnover. The expenditure reductions totaling \$950K are offset by increased software licensing fees and maintenance costs and revenue reductions, resulting in net zero changes to our baseline General Fund budget.</p> <p>Non-General Fund: The Department's proposed Special Fund budget decreases by \$240K in FY25-26 and by \$298K in FY 26-27 from base. In FY 25-26, labor expenditures (salary and mandatory fringe benefits) decrease by \$240K as staff move to General Fund to maintain fund balance for future fiscal years and non-labor costs of \$505K are covered with carryforward budget. In FY26-27 labor costs decrease by \$515K, \$217K non-labor costs are moved on budget while \$277K are covered with carryforward budget, resulting in a decrease of \$298K from base.</p>
<b>Revenues</b>	<p>What revenue changes did the department submit? Please differentiate between General Fund and non-General Fund. This should match an Audit Trail, as shown in Form 2A Revenue Report, as well as, the Expenditure Report in Form 3A.</p>	<p>ASR revenue has been steadily declining as document recording volumes have decreased. In this budget cycle, ASR is reducing revenue budget by \$1.3M in FY25-26 and \$1.1M in FY26-27 to better align with revenue actuals. Total revenue is \$2.3M in FY25-26; ASR is projecting a slight recovery in revenue in FY26-27 for a total revenue of \$2.5M. These projections are based on ASR's monthly revenue reporting, historic trends and assumptions around market dynamics.</p> <p>General Fund: ASR is reducing revenue budget by \$706K in FY25-26 and by \$628K in FY26-27 to align with current actuals. ASR has reduced expenditures to balance this revenue reduction.</p> <p>Non-General Fund: ASR is reducing revenue budget by \$543K in FY25-26 and by \$498K in FY26-27 to align with current actuals. ASR is managing the decrease in revenue by increasing the use of fund balances, using carryforward budget to cover non-labor costs, and shifting labor costs from these self-supporting fund sources as-needed. Budgeted fund balance is \$625K in FY 25-26 (increase of \$303K from base) and \$587K in FY 26-27 (increase of \$448K from base).</p>
<b>Legislation</b>	<p>Is the department seeking to submit any legislation with the budget? Does the department's budget assume any revenues/expenditures that require a legislative change? Does the department's budget include any new recurring grants that require an Accept &amp; Expend?</p>	Not Applicable.
<b>Prop J</b>	<p>Identify existing Prop J Analyses that will continue, and if the department's budget proposes any NEW contracting out of work previously done by City workers.</p>	Not Applicable.
<b>Transfer of Function</b>	<p>Is the department requesting any Transfer of Functions of positions between departments? If so, please explain.</p>	Not Applicable.
<b>Interim Exceptions</b>	<p>Is the department requesting any interim exceptions (new positions that are 1.0 FTE rather than 0.79 in BY and .78 in BY +1)? If so, for what reason are the request being made?</p>	Not Applicable.
<b>Budget Equity</b>	<p>How has the department considered equity in its budget proposal?</p>	<p>The proposed budget includes funding for .5 FTE and system costs to support the implementation of a new restrictive covenant redaction program at ASR. This program's goal is to find and redact racially offensive language from recorded documents. An additional 1.5 FTE are supporting racial equity implementation and workforce development efforts.</p> <p>In addition, we budget \$15K for our equity professional development program. The primary goal of the Equity Professional Development Program is to support the success of People of Color and entry level staff in the office through prioritized access to professional development and to put measures in place that equalize setbacks that People of Color experience due to systemic and societal racism. The professional development funds are accessed by application and target individuals who do not feel that the department's general training funds have been able to support their personal and professional growth and development. Furthermore, we are continuing the funding of \$20K for the DHR training work order to allow our staff to access Implicit Bias training and any other racial equity trainings DHR is able to provide.</p>

## BUDGET FORM 1B: Department Budget Summary

### FY 2025-26 and FY 2026-27

BUDGET FORM 1B: Department Budget Summary

FY 2025-26 and FY 2026-27

DEPARTMENT: ASR Assessor / Recorder

#### GFS Details

Account Lvl 2	Account Lvl 3	FY 2025-26 Base	FY 2025-26 Department	FY 2025-26 Dept - Base	FY 2026-27 Base	FY 2026-27 Department	FY 2026-27 Dept - Base
EXPENDITURE	SALARIES	24,117,432	23,513,128	(604,304)	25,100,818	24,510,910	(589,908)
	MAND_FRING_BEN	9,193,126	8,973,218	(219,908)	9,644,215	9,387,830	(256,385)
	PROG_PROJ	1,170,700	1,170,700	0	0	0	0
	NON_PERS_SVCS	2,760,505	2,882,965	122,460	2,759,005	2,980,206	221,201
	MTL_SUPP	57,298	48,143	(9,155)	57,298	47,928	(9,370)
	SVCS_OTHER_DEPTS	3,971,332	3,975,797	4,465	3,971,332	3,977,352	6,020
EXPENDITURE		41,270,393	40,563,951	(706,442)	41,532,668	40,904,226	(628,442)
GFS	General Fund Support	39,081,951	39,081,951	0	39,344,226	39,344,226	0
Account Lvl 2	Account Lvl 3	FY 2025-26 Base	FY 2025-26 Department	FY 2025-26 Dept - Base	FY 2026-27 Base	FY 2026-27 Department	FY 2026-27 Dept - Base
REVENUE	CHGS_FOR_SERVICES	2,188,442	1,482,000	(706,442)	2,188,442	1,560,000	(628,442)
REVENUE		2,188,442	1,482,000	(706,442)	2,188,442	1,560,000	(628,442)
GFS	General Fund Support	39,081,951	39,081,951	0	39,344,226	39,344,226	0

#### GFS Target Status

FY 2025-26 Reduction Targets	FY 2025-26 Baseline Target	FY 2025-26 Dept Submission	FY 2025-26 Amt Over (Under) Target	FY 2026-27 Reduction Targets	FY 2026-27 Baseline Target	FY 2026-27 Dept Submission	FY 2026-27 Amt Over (Under) Target
(5,300,000)	33,781,951	39,081,951	5,300,000	(5,300,000)	34,044,226	39,344,226	5,300,000
Target Not Met				Target Not Met			

#### NGFS - Self Supporting

Account Lvl 2	Category	FY 2025-26 Base	FY 2025-26 Department	FY 2025-26 Dept - Base	FY 2026-27 Base	FY 2026-27 Department	FY 2026-27 Dept - Base
EXPENDITURE	Salaries	1,113,646	934,792	(178,854)	1,156,458	770,676	(385,782)
	Mandatory Fringe Benefits	452,963	392,306	(60,657)	474,796	345,203	(129,593)
	Overhead and Allocations	154,769	154,769	0	154,769	154,769	0
	Non-Personnel Services	0	0	0	0	217,258	217,258
EXPENDITURE		1,721,378	1,481,867	(239,511)	1,786,023	1,487,906	(298,117)
REVENUE	Charges for Services	1,399,041	856,000	(543,041)	1,399,041	901,000	(498,041)
	Unappropriated Fund Balance	323,024	625,867	302,843	138,679	586,906	448,227
REVENUE		1,722,065	1,481,867	(240,198)	1,537,720	1,487,906	(49,814)
Non-General Fund Support	Revenue Surplus(Deficit)	(687)	0	687	248,303	0	(248,303)

BUDGET FORM 2A: Revenue Report  
FY 2025-26 and FY 2026-27

DEPARTMENT: ASR Assessor / Rec

																				Total BY Revenue Change (946,640)			Total BY1 Revenue Change (678,256)			Budget Justification
GFS Type	Dept Grp	Division	Division Title	Section	Section Title	Dept ID	Dept ID Title	Fund	Fund Title	Project-Activity	Project Title	Activity Title	Authority	Authority Title	Account Lvl 5 Title	Account	Account Title	TRIO	Agency Use	FY 2025-26 Base	FY 2025-26 Department	FY 2025-26 Dept - Base	FY 2026-27 Base	FY 2026-27 Department	FY 2026-27 Dept - Base	Revenue Description and Explanation of Change
GFS	ASR	229015	ASR Recorder	229015	ASR Recorder	229015	ASR Recorder	10000	GF Annual Act	10001636-0001	AS Recording	Recording	10000	Operating	4600C4Svcs	460115	Recording Fees			1,888,442	1,145,000	(743,442)	1,888,442	1,205,000	(683,442)	Recorder Revenues are collected in accordance with State code which are prescriptive and restricted in use. Fee revenue is primarily dependent upon the number of documents recorded, document type and number of pages. Fees also ebb and flow with the state of the economy and real estate market. Fees are not indexed to CPI nor do they include options to increase. The number of documents being recorded has not recovered to pre-pandemic levels. In this budget cycle, ASR is reducing revenue budget by \$1.3M in FY 25-26 to better align with revenue actuals; total revenue is \$2.3M. ASR is projecting a slight recovery in revenue in FY26-27 for a total revenue of \$2.5M. The projection is based on ASR's monthly revenue reporting, historic trends and assumptions around market dynamics in CY and BY.
GFS	ASR	229015	ASR Recorder	229015	ASR Recorder	229015	ASR Recorder	10000	GF Annual Act	10001636-0001	AS Recording	Recording	10000	Operating	4600C4Svcs	460199	Other General Government Chrg			300,000	337,000	37,000	300,000	355,000	55,000	
NGFS	ASR	229015	ASR Recorder	229015	ASR Recorder	229015	ASR Recorder	12610	SR State Autl	10022469-0001	Recorder - Erecor	Recorder - Eresco	16627	AS Recorder	4600C4Svcs	460115	Recording Fees			119,676	75,000	(44,676)	119,676	78,000	(41,676)	
NGFS	ASR	229015	ASR Recorder	229015	ASR Recorder	229015	ASR Recorder	12610	SR State Autl	10024396-0001	AS Doc Storage C	Doc Storage Con	17402	AS Doc Stor	4600C4Svcs	460115	Recording Fees			117,857	73,000	(44,857)	117,857	77,000	(40,857)	
NGFS	ASR	229015	ASR Recorder	229015	ASR Recorder	229015	ASR Recorder	12610	SR State Autl	10024397-0001	AS Page Recorder	Page Recorders I	17403	AS Page Rec	4600C4Svcs	460115	Recording Fees			652,062	373,000	(279,062)	652,062	392,000	(260,062)	
NGFS	ASR	229015	ASR Recorder	229015	ASR Recorder	229015	ASR Recorder	12610	SR State Autl	10024400-0001	Assessor 10% All	ASR 10% Alloc F	17405	AS Assessor	4600C4Svcs	460115	Recording Fees			14,064	9,000	(5,064)	14,064	10,000	(4,064)	
NGFS	ASR	229015	ASR Recorder	229015	ASR Recorder	229015	ASR Recorder	12610	SR State Autl	10024404-0001	AS Recorder Inde	Recorder Indexin	17409	AS Recorder	4600C4Svcs	460115	Recording Fees			235,630	145,000	(90,630)	235,630	153,000	(82,630)	
NGFS	ASR	229015	ASR Recorder	229015	ASR Recorder	229015	ASR Recorder	12610	SR State Autl	10032513-0001	Building, Home &	Building, Home &	19830	SB2 Building	4600C4Svcs	460115	Recording Fees			171,225	112,000	(59,225)	171,225	118,000	(53,225)	
NGFS	ASR	229015	ASR Recorder	229015	ASR Recorder	229015	ASR Recorder	12650	SR Vital & Hlt	10024398-0001	AS Statistics Fee	Statistics Fee Col	17404	AS Statistics I	4600C4Svcs	460143	Vital & Hlth Statistic Fee Sta			88,527	69,000	(19,527)	88,527	73,000	(15,527)	
																				3,587,483	2,338,000	(1,249,483)	3,587,483	2,461,000	(1,126,483)	ASR is managing the use of fund balances by using carryforward budget to cover non-labor costs and shifting labor costs from these self-supporting fund sources to General Fund as-needed. Budgeted fund balance is \$625K in FY 25-26 (increase of \$303K from FY 25-26 base) and \$587K in FY 26-27 (increase of \$448K from FY 26-27 base).
NGFS	ASR	229015	ASR Recorder	229015	ASR Recorder	229015	ASR Recorder	12610	SR State Autl	10022469-0001	Recorder - Erecor	Recorder - Eresco	16627	AS Recorder	49990BegFB	499999	Beg Fund Balance - Budget Only			31,521	131,251	99,730	0	0	0	
NGFS	ASR	229015	ASR Recorder	229015	ASR Recorder	229015	ASR Recorder	12610	SR State Autl	10024396-0001	AS Doc Storage C	Doc Storage Con	17402	AS Doc Stor	49990BegFB	499999	Beg Fund Balance - Budget Only			7,009	38,146	31,137	6,083	39,363	33,280	
NGFS	ASR	229015	ASR Recorder	229015	ASR Recorder	229015	ASR Recorder	12610	SR State Autl	10024397-0001	AS Page Recorder	Page Recorders I	17403	AS Page Rec	49990BegFB	499999	Beg Fund Balance - Budget Only			27,734	32,490	4,756	6,559	0	(6,559)	
NGFS	ASR	229015	ASR Recorder	229015	ASR Recorder	229015	ASR Recorder	12610	SR State Autl	10024400-0001	Assessor 10% All	ASR 10% Alloc F	17405	AS Assessor	49990BegFB	499999	Beg Fund Balance - Budget Only			80,184	67,714	(12,470)	79,459	70,527	(8,932)	
NGFS	ASR	229015	ASR Recorder	229015	ASR Recorder	229015	ASR Recorder	12610	SR State Autl	10024404-0001	AS Recorder Inde	Recorder Indexin	17409	AS Recorder	49990BegFB	499999	Beg Fund Balance - Budget Only			48,894	146,881	97,987	46,578	313,000	266,422	
NGFS	ASR	229015	ASR Recorder	229015	ASR Recorder	229015	ASR Recorder	12610	SR State Autl	10032513-0001	Building, Home &	Building, Home &	19830	SB2 Building	49990BegFB	499999	Beg Fund Balance - Budget Only			90,208	152,501	62,293	0	105,926	105,926	
NGFS	ASR	229015	ASR Recorder	229015	ASR Recorder	229015	ASR Recorder	12650	SR Vital & Hlt	10024398-0001	AS Statistics Fee	Statistics Fee Col	17404	AS Statistics I	49990BegFB	499999	Beg Fund Balance - Budget Only			37,474	56,884	19,410	0	58,090	58,090	
																				323,024	625,867	302,843	138,679	586,906	448,227	

Budget Form 2B: Schedule of Licenses, Permits, Fines & Service Charges  
DEPARTMENT: ASR Assessor / Recorder

FY 2025-26 and FY 2026-27

Note: The Assessor-Recorder's Office does not track the volume of each recorder fee collected. Rather the department tracks the volume of fee document types and collected recorder fees are allocated to different index codes. The department

TABLE 2 - CONTINUING FEES

						Fund Code		10000	12610	12610	12610	12610	12610	12610	12610	10020	10020	13980	10000	10000	10000	10000	12650	12610	29430	28960	28960	Total Budget		
						Project-Activity Code		10001636-0001	10024396-0001	10024397-0001	10024404-0001	100224404-0001	10022469-0001	10024400-0001	10024401-0001	10024402-0001	10002004-0001	10001636-0001	10001636-0001	10001636-0001	10001636-0001	10024398-0001	10032513-0001	10032110-0001	10032111-0002	28960	28960			
						Account		460115	460115	460115	460115	460115	460115	460115	460115	460115	460199	460199	460199	460199	460199	460199	460143	203680	203650	203680	203680			
						2023-24 Actuals		\$ 1,207,901	\$ 80,231	\$ 365,373	\$ 160,448	grouped with access fee for budget purposes		\$ 81,099	\$ 11,406	revenue transferred to DA		revenue transferred to Police		revenue transferred to DPW		\$ 332,045	grouped with preliminary notice fee as misc. revenue for budget purposes		\$ 66,899	\$ 115,308	revenue transferred to Trial Court		revenue transferred to Judicial Council	revenue transferred to State
						2024-25 Budget		\$ 1,716,765	\$ 107,143	\$ 592,784	\$ 214,209			\$ 108,796	\$ 12,785							\$ 300,000			\$ 88,527	\$ 155,659				
						2025-26 Budget		\$ 1,145,000	\$ 73,000	\$ 373,000	\$ 145,000			\$ 75,000	\$ 9,000							\$ 337,000			\$ 69,000	\$ 112,000				
Item	Fee Status	Description	Code Authorization	Auto CPI Adjust Yes/No	FY 24-25 Fee	FY 25-26 Fee **	FY 26-27 Fee **	Recording Fee	Microfilm Fee	Page Fee	Access Fee	Indexing Fee	eRecording Fee	Fraud Prosecution Fee -Recorder Share	Fraud Prosecution Fee - DA Share	Fraud Prosecution Fee - Police Share	Survey Monument Preservation Fee	Preliminary Notice	UCC Recording	Copy Fee	Marriage Copy Fee - Recorder Share	Health & Vital Statistics	Building Homes and Jobs Fee	Trial Court Funding Fee	Judicial Council	State Fee				
1	C	Recording Fee - First page of a deed of trust, reconveyance, request for notice, notice of default, and any deed not subject to documentary transfer tax.	27360 et seq; 27397	No	\$ 17.00	\$ 17.00		\$ 9.00	\$ 1.00	\$ 1.00	\$ 1.00	\$ 1.00	\$ 1.00	\$ 0.30	\$ 1.62	\$ 1.08														
2	C	Recording Fee - First page of all other documents	27360 et seq; 27397	No	\$ 14.00	\$ 14.00	\$ 14.00	\$ 9.00	\$ 1.00	\$ 1.00	\$ 1.00	\$ 1.00	\$ 1.00																	
3	C	Recording Fee - Each additional page	27360 et seq; 77201 b) 2)	No	\$ 3.00	\$ 3.00	\$ 3.00	\$ 1.00		\$ 1.00														\$ 1.00						
4	C	Recording Fee - Monument Fee	Admin Code Sec 8.24-6	No	\$ 10.00	\$ 10.00	\$ 10.00										\$ 10.00													
5	C	Recording Fee - Combined (multiple title) documents	27360 et seq; 27397	No	\$ 14.00	\$ 14.00	\$ 14.00	\$ 9.00	\$ 1.00	\$ 1.00	\$ 1.00	\$ 1.00	\$ 1.00																	
6	C	Recording Fee - Penalty Print	27360 et seq	No	\$ 1.00	\$ 1.00	\$ 1.00	\$ 1.00																						
7	C	Recording Fee - Documents requiring indexing of more than 10 names (charge per each additional 10 names or part thereof)	27360 et seq	No	\$ 1.00	\$ 1.00	\$ 1.00	\$ 1.00																						
8	C	Recording Fee - Documents requiring indexing of more than 1 recording reference (charge per each additional reference)	27360 et seq; 27361.2	No	\$ 1.00	\$ 1.00	\$ 1.00	\$ 1.00																						
9	C	Recording Fee - Releases State and County Liens	27361.3	No	\$ 20.00	\$ 20.00	\$ 20.00	\$ 18.00		\$ 2.00																				
10	C	Recording Fee - Notification of Involuntary Lien - First Debtor	27297.5; 27387	No	\$ 6.00	\$ 6.00	\$ 6.00	\$ 6.00																						
11	C	Recording Fee - Notification of Involuntary Lien - Each additional debtor	27297.5; 27387	No	\$ 2.00	\$ 2.00	\$ 2.00	\$ 2.00																						
12	C	Recording Fee - Preliminary Change of Ownership (fail to file, R&T 480.3)	27360 et seq	No	\$ 20.00	\$ 20.00	\$ 20.00	\$ 20.00																						
13	C	Recording Fee - California Preliminary 20-Day Notice	27360 et seq	No	\$ 22.00	\$ 22.00	\$ 22.00											\$ 22.00												
14	C	Recording Fee - Document Surcharge (not 8.5 X 11)	27361(a)(2)	No	\$ 3.00	\$ 3.00	\$ 3.00			\$ 3.00																				
15	C	Financing Statements - Filing of forms prescribed by Secretary of State (less than 3 pages)	UCC 9403-9407; 27397	No	\$ 11.00	\$ 11.00	\$ 11.00						\$ 1.00						\$ 10.00											
16	C	Financing Statements - Filing of forms prescribed by Secretary of State (3+ pages)	UCC 9403-9407; 27397	No	\$ 21.00	\$ 21.00	\$ 21.00						\$ 1.00						\$ 20.00											
17	C	Financing Statements - Request for UCC Certificate	UCC 9403-9407	No	\$ 10.00	\$ 10.00	\$ 10.00												\$ 10.00											
18	C	Maps - First page	27372; 27397	No	\$ 9.00	\$ 9.00	\$ 9.00	\$ 7.00	\$ 1.00				\$ 1.00																	
19	C	Maps - Each additional page	27372	No	\$ 2.00	\$ 2.00	\$ 2.00	\$ 2.00																						
20	C	Copying & Certification Fees - Certification	27366; 27364	No	\$ 1.00	\$ 1.00	\$ 1.00													\$ 1.00										
21	C	Copying & Certification Fees - Certified copy of Public Marriage License (General Public)	H&S Code 103625	No	\$ 17.00	\$ 17.00	\$ 17.00														\$ 6.70	\$ 2.75			\$ 3.60	\$ 3.95				
22	C	Copying & Certification Fees - Conforming copy surcharge	27366; 27364	No	\$ 1.00	\$ 1.00	\$ 1.00													\$ 1.00										
23	C	Copying & Certification Fees - Copies of recorded maps (1st page)	27366; 27364	No	\$ 5.00	\$ 5.00	\$ 5.00													\$ 5.00										
24	C	Copying & Certification Fees - Copies of recorded maps (each additional page after page one)	27366; 27364	No	\$ 3.00	\$ 3.00	\$ 3.00													\$ 3.00										
25	C	Building Homes and Jobs Fee - \$75 per transaction/parcel up to \$225	27388.1	No	\$ 75.00	\$ 75.00	\$ 75.00																\$ 75.00							
26	C	Copying & Certification Fees - Certified copy of Public Marriage License (Government Agency)	H&S Code 103625	No	\$ 12.00	\$ 12.00	\$ 12.00														\$ 5.45	\$ 2.75					\$ 3.80			
27	C	Copy Fee - Online Self-Service Download	27366	Yes	\$ 1.76	\$ 1.81	\$ 1.86														\$ 1.81									
28	C	Copy Fee - Search and Copy in City Hall - First Page	27366	Yes	\$ 9.44	\$ 9.70	\$ 9.97														\$ 9.70									
29	C	Copy Fee - Search and Copy in City Hall - Each additional page	27366	Yes	\$ 0.38	\$ 0.39	\$ 0.40														\$ 0.39									

Fee Status: C Continuing  
M Modified  
N New  
D Discontinued

Note:  
\*\* If Auto CPI adjustment = Yes, FY 2025-26 and FY 2026-27 Fee will be automatically generated based on the inflation factor determined by the Controller.  
If Auto CPI adjustment = No, FY 2025-26 and FY 2026-27 Fee will remain the same as previous year or entered by dept according to Code Authorization.



BUDGET FORM 3A: Expenditure Changes  
FY 2025-26 and FY 2026-27

DEPARTMENT: ASR Assessor / Recorder

																				Change	(945,953)	Change	(926,559)				
GFS Type	Dept Grp	Division	Division Title	Section	Section Title	Dept ID	Dept ID Title	Fund	Fund Title	Project-Activity	Project Title	Activity Title	Authority	Authority Title	Account Lvl 5 Title	Account	Account Title	Equipment #	TRIO	Agency Use	FY 2025-26 Base	FY 2025-26 Department	FY 2025-26 Dept - Base	FY 2026-27 Base	FY 2026-27 Department	FY 2026-27 Dept - Base	Explanation of Change
GFS	ASR	229014	ASR Administ 229014	ASR Administ 229014	ASR Administ 229014	ASR Administ 10000		GF Annual Ac 10001634-000AS Administ	Administration	10000	Operating	5010Salary	501010	Perm Salaries-Misc-Regular		4,207,287	4,035,771	(171,516)	4,370,461		4,528,888	158,427	See Form 3B				
GFS	ASR	229014	ASR Administ 229014	ASR Administ 229014	ASR Administ 229014	ASR Administ 10000		GF Annual Ac 10001634-000AS Administ	Administration	10000	Operating	5010Salary	509010	Premium Pay - Misc		0	1,566	1,566	0		1,566	1,566	See Form 3B				
GFS	ASR	229014	ASR Administ 229014	ASR Administ 229014	ASR Administ 229014	ASR Administ 10000		GF Annual Ac 10001634-000AS Administ	Administration	10000	Operating	5130Fringe	513010	Retire City Misc		588,495	564,934	(23,561)	607,004		628,768	21,764	See Form 3B				
GFS	ASR	229014	ASR Administ 229014	ASR Administ 229014	ASR Administ 229014	ASR Administ 10000		GF Annual Ac 10001634-000AS Administ	Administration	10000	Operating	5130Fringe	514010	Social Security (OASDI & HI)		245,699	235,161	(10,538)	255,923		263,134	7,211	See Form 3B				
GFS	ASR	229014	ASR Administ 229014	ASR Administ 229014	ASR Administ 229014	ASR Administ 10000		GF Annual Ac 10001634-000AS Administ	Administration	10000	Operating	5130Fringe	514020	Social Sec-Medicare(HI Only)		61,226	58,762	(2,464)	63,592		65,914	2,322	See Form 3B				
GFS	ASR	229014	ASR Administ 229014	ASR Administ 229014	ASR Administ 229014	ASR Administ 10000		GF Annual Ac 10001634-000AS Administ	Administration	10000	Operating	5130Fringe	515010	Health Service-City Match		140,975	137,572	(3,403)	150,122		154,683	4,561	See Form 3B				
GFS	ASR	229014	ASR Administ 229014	ASR Administ 229014	ASR Administ 229014	ASR Administ 10000		GF Annual Ac 10001634-000AS Administ	Administration	10000	Operating	5130Fringe	515020	Retiree Health-Match-Prop B		31,524	30,255	(1,269)	32,745		33,939	1,194	See Form 3B				
GFS	ASR	229014	ASR Administ 229014	ASR Administ 229014	ASR Administ 229014	ASR Administ 10000		GF Annual Ac 10001634-000AS Administ	Administration	10000	Operating	5130Fringe	515030	RetireeHlthCare-CityMatchPropC		10,700	10,270	(430)	11,112		11,517	405	See Form 3B				
GFS	ASR	229014	ASR Administ 229014	ASR Administ 229014	ASR Administ 229014	ASR Administ 10000		GF Annual Ac 10001634-000AS Administ	Administration	10000	Operating	5130Fringe	515710	Dependent Coverage		355,710	331,627	(24,083)	378,777		370,066	(8,711)	See Form 3B				
GFS	ASR	229014	ASR Administ 229014	ASR Administ 229014	ASR Administ 229014	ASR Administ 10000		GF Annual Ac 10001634-000AS Administ	Administration	10000	Operating	5130Fringe	516010	Dental Coverage		31,543	29,724	(1,819)	34,797		34,403	(394)	See Form 3B				
GFS	ASR	229014	ASR Administ 229014	ASR Administ 229014	ASR Administ 229014	ASR Administ 10000		GF Annual Ac 10001634-000AS Administ	Administration	10000	Operating	5130Fringe	519110	Flexible Benefit Package		45,034	50,797	5,763	47,957		54,094	6,137	See Form 3B				
GFS	ASR	229014	ASR Administ 229014	ASR Administ 229014	ASR Administ 229014	ASR Administ 10000		GF Annual Ac 10001634-000AS Administ	Administration	10000	Operating	5130Fringe	519120	Long Term Disability Insurance		10,521	9,106	(1,415)	10,933		10,843	(90)	See Form 3B				
GFS	ASR	229014	ASR Administ 229014	ASR Administ 229014	ASR Administ 229014	ASR Administ 10000		GF Annual Ac 10001634-000AS Administ	Administration	10000	Operating	5210NPSvcs	521000	Travel-Budget		9,260	9,870	610	9,260		10,500	1,240	Slight increase in travel budget to attend Board of Equalization and California Assessor Association events and meetings.				
GFS	ASR	229014	ASR Administ 229014	ASR Administ 229014	ASR Administ 229014	ASR Administ 10000		GF Annual Ac 10001634-000AS Administ	Administration	10000	Operating	5210NPSvcs	522000	Training - Budget		27,335	18,050	(9,285)	27,335		11,050	(16,285)	Reduced budget to align with actuals and current travel and training directive.				
GFS	ASR	229014	ASR Administ 229014	ASR Administ 229014	ASR Administ 229014	ASR Administ 10000		GF Annual Ac 10001634-000AS Administ	Administration	10000	Operating	5210NPSvcs	523050	Employee Recognition		4,000	5,000	1,000	2,500		5,000	2,500	Reallocation of budget previously in materials and supplies for staff wellness and appreciation events.				
GFS	ASR	229014	ASR Administ 229014	ASR Administ 229014	ASR Administ 229014	ASR Administ 10000		GF Annual Ac 10001634-000AS Administ	Administration	10000	Operating	5210NPSvcs	524010	Membership Fees		3,770	3,900	130	3,770		3,900	130	Slight increase in the cost of California Assessor Association membership.				
GFS	ASR	229014	ASR Administ 229014	ASR Administ 229014	ASR Administ 229014	ASR Administ 10000		GF Annual Ac 10001634-000AS Administ	Administration	10000	Operating	5210NPSvcs	527610	Systems Consulting Services		1,002,400	1,228,208	223,808	1,002,400		1,287,518	285,118	Increase cost of the SMART system's maintenance and support.				
GFS	ASR	229014	ASR Administ 229014	ASR Administ 229014	ASR Administ 229014	ASR Administ 10000		GF Annual Ac 10001634-000AS Administ	Administration	10000	Operating	5210NPSvcs	527990	Other Professional Services		26,385	23,500	(2,885)	26,385		24,500	(1,885)	Reduction to align with contractual agreements and planned spending.				
GFS	ASR	229014	ASR Administ 229014	ASR Administ 229014	ASR Administ 229014	ASR Administ 10000		GF Annual Ac 10001634-000AS Administ	Administration	10000	Operating	5210NPSvcs	531310	Office Machine Rental		20,000	22,000	2,000	20,000		22,000	2,000	Slight increase in printing and scanning services to align with actuals and the opening of new office space.				
GFS	ASR	229014	ASR Administ 229014	ASR Administ 229014	ASR Administ 229014	ASR Administ 10000		GF Annual Ac 10001634-000AS Administ	Administration	10000	Operating	5210NPSvcs	535710	Subscriptions		820	600	(220)	820		650	(170)	Reduced subscriptions budget to only critical publications.				
GFS	ASR	229014	ASR Administ 229014	ASR Administ 229014	ASR Administ 229014	ASR Administ 10000		GF Annual Ac 10001634-000AS Administ	Administration	10000	Operating	5210NPSvcs	535960	Software Licensing Fees		1,159,570	1,178,531	18,961	1,159,570		1,219,176	59,606	Increase cost of Salesforce and Atlassian licenses for SMART system.				
GFS	ASR	229014	ASR Administ 229014	ASR Administ 229014	ASR Administ 229014	ASR Administ 10000		GF Annual Ac 10001634-000AS Administ	Administration	10000	Operating	5400Mat&Su	540000	Materials & Supplies-Budget		55,948	48,143	(7,805)	55,948		47,928	(8,020)	Reduced materials and supplies to align with actuals.				
GFS	ASR	229014	ASR Administ 229014	ASR Administ 229014	ASR Administ 229014	ASR Administ 10000		GF Annual Ac 10001634-000AS Administ	Administration	10000	Operating	5400Mat&Su	549210	Data Processing Supplies		1,350	0	(1,350)	1,350		0	(1,350)	Removed data processing supplies budget.				
GFS	ASR	229014	ASR Administ 229014	ASR Administ 229014	ASR Administ 229014	ASR Administ 10000		GF Annual Ac 10001634-000AS Administ	Administration	10000	Operating	5810OthDep	581140	DT Technology Projects		21,153	24,723	3,570	21,153		24,723	3,570	Increased budget to match rising costs of server storage.				
GFS	ASR	229014	ASR Administ 229014	ASR Administ 229014	ASR Administ 229014	ASR Administ 10000		GF Annual Ac 10001634-000AS Administ	Administration	10000	Operating	5810OthDep	581142	DT Citywide Public Cloud		318	1,213	895	318		1,213	895	Increased to align with current year actuals.				
GFS	ASR	229014	ASR Administ 229014	ASR Administ 229014	ASR Administ 229014	ASR Administ 10000		GF Annual Ac 10001634-000AS Administ	Administration	10000	Operating	5810OthDep	581970	GF-Treasurer		54,619	54,619	0	54,619		56,174	1,555	Increased budget to reflect actual platform license costs and budget for additional appeals staff's licenses.				
GFS	ASR	196645	ASR Exemptit 196645	ASR Exemptit 196645	ASR Exemptit 196645	ASR Exemptit 10000		GF Annual Ac 10032514-000AS Exemptior	Exemptions	10000	Operating	5010Salary	501010	Perm Salaries-Misc-Regular		541,068	524,040	(17,028)	566,715		535,295	(31,420)	See Form 3B				
GFS	ASR	196645	ASR Exemptit 196645	ASR Exemptit 196645	ASR Exemptit 196645	ASR Exemptit 10000		GF Annual Ac 10032514-000AS Exemptior	Exemptions	10000	Operating	5010Salary	505010	Temp Misc Regular Salaries		1,217	1,216	(1)	1,217		1,216	(1)	See Form 3B				
GFS	ASR	196645	ASR Exemptit 196645	ASR Exemptit 196645	ASR Exemptit 196645	ASR Exemptit 10000		GF Annual Ac 10032514-000AS Exemptior	Exemptions	10000	Operating	5010Salary	509010	Premium Pay - Misc		2,088	1,044	(1,044)	2,088		1,044	(1,044)	See Form 3B				
GFS	ASR	196645	ASR Exemptit 196645	ASR Exemptit 196645	ASR Exemptit 196645	ASR Exemptit 10000		GF Annual Ac 10032514-000AS Exemptior	Exemptions	10000	Operating	5130Fringe	513010	Retire City Misc		77,862	75,194	(2,668)	80,982		76,274	(4,708)	See Form 3B				
GFS	ASR	196645	ASR Exemptit 196645	ASR Exemptit 196645	ASR Exemptit 196645	ASR Exemptit 10000		GF Annual Ac 10032514-000AS Exemptior	Exemptions	10000	Operating	5130Fringe	514010	Social Security (OASDI & HI)		33,750	32,629	(1,121)	35,340		33,327	(2,013)	See Form 3B				
GFS	ASR	196645	ASR Exemptit 196645	ASR Exemptit 196645	ASR Exemptit 196645	ASR Exemptit 10000		GF Annual Ac 10032514-000AS Exemptior	Exemptions	10000	Operating	5130Fringe	514020	Social Sec-Medicare(HI Only)		7,891	7,629	(262)	8,267		7,797	(470)	See Form 3B				
GFS	ASR	196645	ASR Exemptit 196645	ASR Exemptit 196645	ASR Exemptit 196645	ASR Exemptit 10000		GF Annual Ac 10032514-000AS Exemptior	Exemptions	10000	Operating	5130Fringe	515010	Health Service-City Match		35,422	35,380	(42)	37,719		37,184	(535)	See Form 3B				
GFS	ASR	196645	ASR Exemptit 196645	ASR Exemptit 196645	ASR Exemptit 196645	ASR Exemptit 10000		GF Annual Ac 10032514-000AS Exemptior	Exemptions	10000	Operating	5130Fringe	515020	Retiree Health-Match-Prop B		4,065	3,930	(135)	4,256		4,013	(243)	See Form 3B				
GFS	ASR	196645	ASR Exemptit 196645	ASR Exemptit 196645	ASR Exemptit 196645	ASR Exemptit 10000		GF Annual Ac 10032514-000AS Exemptior	Exemptions	10000	Operating	5130Fringe	515030	RetireeHlthCare-CityMatchPropC		1,378	1,332	(46)	1,445		1,362	(83)	See Form 3B				
GFS	ASR	196645	ASR Exemptit 196645	ASR Exemptit 196645	ASR Exemptit 196645	ASR Exemptit 10000		GF Annual Ac 10032514-000AS Exemptior	Exemptions	10000	Operating	5130Fringe	515710	Dependent Coverage		54,409	54,244	(165)	57,938		55,834	(2,104)	See Form 3B				
GFS	ASR	196645	ASR Exemptit 196645	ASR Exemptit 196645	ASR Exemptit 196645	ASR Exemptit 10000		GF Annual Ac 10032514-000AS Exemptior	Exemptions																		

BUDGET FORM 3A: Expenditure Changes  
FY 2025-26 and FY 2026-27

DEPARTMENT: ASR Assessor / Recorder

															Change	(945,953)	Change	(926,559)									
GFS Type	Dept Grp	Division	Division Title	Section	Section Title	Dept ID	Dept ID Title	Fund	Fund Title	Project-Activity	Project Title	Activity Title	Authority	Authority Title	Account Lvl 5 Title	Account	Account Title	Equipment #	TRIO	Agency Use	FY 2025-26 Base	FY 2025-26 Department	FY 2025-26 Dept - Base	FY 2026-27 Base	FY 2026-27 Department	FY 2026-27 Dept - Base	Explanation of Change
GFS	ASR	196646	ASR Public Sr 196646	ASR Public Sr 196646	ASR Public Sr 196646	ASR Public Sr 10000		GF Annual Ac 10026674-000AS Customer	Customer Ser 10000	Operating	5010Salary	509010	Premium Pay - Misc			1,560	2,610	1,050	1,560			1,050		2,610	1,050	See Form 3B	
GFS	ASR	196646	ASR Public Sr 196646	ASR Public Sr 196646	ASR Public Sr 196646	ASR Public Sr 10000		GF Annual Ac 10026674-000AS Customer	Customer Ser 10000	Operating	5130Fringe	513010	Retire City Misc			239,050	249,966	10,916	248,528			253,576	5,048	See Form 3B			
GFS	ASR	196646	ASR Public Sr 196646	ASR Public Sr 196646	ASR Public Sr 196646	ASR Public Sr 10000		GF Annual Ac 10026674-000AS Customer	Customer Ser 10000	Operating	5130Fringe	514010	Social Security (OASDI & HI)			102,899	108,050	5,151	107,823			110,478	2,655	See Form 3B			
GFS	ASR	196646	ASR Public Sr 196646	ASR Public Sr 196646	ASR Public Sr 196646	ASR Public Sr 10000		GF Annual Ac 10026674-000AS Customer	Customer Ser 10000	Operating	5130Fringe	514020	Social Sec-Medicare(HI Only)			24,374	25,579	1,205	25,515			26,135	620	See Form 3B			
GFS	ASR	196646	ASR Public Sr 196646	ASR Public Sr 196646	ASR Public Sr 196646	ASR Public Sr 10000		GF Annual Ac 10026674-000AS Customer	Customer Ser 10000	Operating	5130Fringe	515010	Health Service-City Match			128,014	130,105	2,091	136,313			136,978	665	See Form 3B			
GFS	ASR	196646	ASR Public Sr 196646	ASR Public Sr 196646	ASR Public Sr 196646	ASR Public Sr 10000		GF Annual Ac 10026674-000AS Customer	Customer Ser 10000	Operating	5130Fringe	515020	Retiree Health-Match-Prop B			12,544	13,163	619	13,128			13,447	319	See Form 3B			
GFS	ASR	196646	ASR Public Sr 196646	ASR Public Sr 196646	ASR Public Sr 196646	ASR Public Sr 10000		GF Annual Ac 10026674-000AS Customer	Customer Ser 10000	Operating	5130Fringe	515030	RetireeHlthCare-CityMatchPropC			4,261	4,472	211	4,456			4,565	109	See Form 3B			
GFS	ASR	196646	ASR Public Sr 196646	ASR Public Sr 196646	ASR Public Sr 196646	ASR Public Sr 10000		GF Annual Ac 10026674-000AS Customer	Customer Ser 10000	Operating	5130Fringe	515710	Dependent Coverage			216,692	221,180	4,488	230,745			229,389	(1,356)	See Form 3B			
GFS	ASR	196646	ASR Public Sr 196646	ASR Public Sr 196646	ASR Public Sr 196646	ASR Public Sr 10000		GF Annual Ac 10026674-000AS Customer	Customer Ser 10000	Operating	5130Fringe	516010	Dental Coverage			20,840	21,286	446	22,984			22,957	(27)	See Form 3B			
GFS	ASR	196646	ASR Public Sr 196646	ASR Public Sr 196646	ASR Public Sr 196646	ASR Public Sr 10000		GF Annual Ac 10026674-000AS Customer	Customer Ser 10000	Operating	5130Fringe	519110	Flexible Benefit Package			5,763	11,526	5,763	6,137			12,274	6,137	See Form 3B			
GFS	ASR	196646	ASR Public Sr 196646	ASR Public Sr 196646	ASR Public Sr 196646	ASR Public Sr 10000		GF Annual Ac 10026674-000AS Customer	Customer Ser 10000	Operating	5130Fringe	519120	Long Term Disability Insurance			6,048	5,673	(375)	6,350			5,782	(568)	See Form 3B			
GFS	ASR	229011	ASR Real Pro 229011	ASR Real Pro 229011	ASR Real Pro 229011	ASR Real Pro 10000		GF Annual Ac 10001635-000AS Assessme	Real Property 10000	Operating	5010Salary	501010	Perm Salaries-Misc-Regular			9,550,299	9,066,924	(483,375)	9,921,829			9,353,301	(568,528)	See Form 3B			
GFS	ASR	229011	ASR Real Pro 229011	ASR Real Pro 229011	ASR Real Pro 229011	ASR Real Pro 10000		GF Annual Ac 10001635-000AS Assessme	Real Property 10000	Operating	5010Salary	505010	Temp Misc Regular Salaries			1,217	1,216	(1)	1,217			1,216	(1)	See Form 3B			
GFS	ASR	229011	ASR Real Pro 229011	ASR Real Pro 229011	ASR Real Pro 229011	ASR Real Pro 10000		GF Annual Ac 10001635-000AS Assessme	Real Property 10000	Operating	5010Salary	509010	Premium Pay - Misc			128,275	165,051	36,776	128,275			165,051	36,776	See Form 3B			
GFS	ASR	229011	ASR Real Pro 229011	ASR Real Pro 229011	ASR Real Pro 229011	ASR Real Pro 10000		GF Annual Ac 10001635-000AS Assessme	Real Property 10000	Operating	5130Fringe	513010	Retire City Misc			1,346,827	1,273,149	(73,678)	1,389,328			1,303,492	(85,836)	See Form 3B			
GFS	ASR	229011	ASR Real Pro 229011	ASR Real Pro 229011	ASR Real Pro 229011	ASR Real Pro 10000		GF Annual Ac 10001635-000AS Assessme	Real Property 10000	Operating	5130Fringe	514010	Social Security (OASDI & HI)			589,912	562,926	(26,986)	613,029			580,699	(32,330)	See Form 3B			
GFS	ASR	229011	ASR Real Pro 229011	ASR Real Pro 229011	ASR Real Pro 229011	ASR Real Pro 10000		GF Annual Ac 10001635-000AS Assessme	Real Property 10000	Operating	5130Fringe	514020	Social Sec-Medicare(HI Only)			140,364	133,889	(6,475)	145,751			138,040	(7,711)	See Form 3B			
GFS	ASR	229011	ASR Real Pro 229011	ASR Real Pro 229011	ASR Real Pro 229011	ASR Real Pro 10000		GF Annual Ac 10001635-000AS Assessme	Real Property 10000	Operating	5130Fringe	515010	Health Service-City Match			347,188	341,237	(5,951)	369,748			359,975	(9,773)	See Form 3B			
GFS	ASR	229011	ASR Real Pro 229011	ASR Real Pro 229011	ASR Real Pro 229011	ASR Real Pro 10000		GF Annual Ac 10001635-000AS Assessme	Real Property 10000	Operating	5130Fringe	515020	Retiree Health-Match-Prop B			72,275	68,941	(3,334)	75,048			71,078	(3,970)	See Form 3B			
GFS	ASR	229011	ASR Real Pro 229011	ASR Real Pro 229011	ASR Real Pro 229011	ASR Real Pro 10000		GF Annual Ac 10001635-000AS Assessme	Real Property 10000	Operating	5130Fringe	515030	RetireeHlthCare-CityMatchPropC			24,529	23,397	(1,132)	25,456			24,109	(1,347)	See Form 3B			
GFS	ASR	229011	ASR Real Pro 229011	ASR Real Pro 229011	ASR Real Pro 229011	ASR Real Pro 10000		GF Annual Ac 10001635-000AS Assessme	Real Property 10000	Operating	5130Fringe	515710	Dependent Coverage			898,991	873,742	(25,249)	957,274			914,897	(42,377)	See Form 3B			
GFS	ASR	229011	ASR Real Pro 229011	ASR Real Pro 229011	ASR Real Pro 229011	ASR Real Pro 10000		GF Annual Ac 10001635-000AS Assessme	Real Property 10000	Operating	5130Fringe	516010	Dental Coverage			78,911	76,886	(2,025)	87,053			83,550	(3,503)	See Form 3B			
GFS	ASR	229011	ASR Real Pro 229011	ASR Real Pro 229011	ASR Real Pro 229011	ASR Real Pro 10000		GF Annual Ac 10001635-000AS Assessme	Real Property 10000	Operating	5130Fringe	519110	Flexible Benefit Package			23,052	25,934	2,882	24,548			30,685	6,137	See Form 3B			
GFS	ASR	229011	ASR Real Pro 229011	ASR Real Pro 229011	ASR Real Pro 229011	ASR Real Pro 10000		GF Annual Ac 10001635-000AS Assessme	Real Property 10000	Operating	5130Fringe	519120	Long Term Disability Insurance			35,532	33,228	(2,304)	36,931			33,868	(3,063)	See Form 3B			
GFS	ASR	229011	ASR Real Pro 229011	ASR Real Pro 229011	ASR Real Pro 229011	ASR Real Pro 10000		GF Annual Ac 10001635-000AS Assessme	Real Property 10000	Operating	5210NPSvcs	522000	Training - Budget			2,384	2,410	26	2,384			2,410	26	Slight increase in training budget to align with rising cost of planned trainings.			
GFS	ASR	229011	ASR Real Pro 229011	ASR Real Pro 229011	ASR Real Pro 229011	ASR Real Pro 10000		GF Annual Ac 10001635-000AS Assessme	Real Property 10000	Operating	5210NPSvcs	527990	Other Professional Services			33,000	30,142	(2,858)	33,000			30,748	(2,252)	Reduced budget to align with current contractual agreements and expected finding of facts costs.			
GFS	ASR	229011	ASR Real Pro 229011	ASR Real Pro 229011	ASR Real Pro 229011	ASR Real Pro 10000		GF Annual Ac 10001635-000AS Assessme	Real Property 10000	Operating	5210NPSvcs	535710	Subscriptions			412,360	315,754	(96,606)	412,360			315,754	(96,606)	Reduced budget to align with current and planned contractual agreements.			
GFS	ASR	229015	ASR Recorde 229015	ASR Recorde 229015	ASR Recorde 229015	ASR Recorde 10000		GF Annual Ac 10001636-000AS Recording	Recording 10000	Operating	5010Salary	501010	Perm Salaries-Misc-Regular			627,326	591,088	(36,238)	664,840			602,175	(62,665)	See Form 3B			
GFS	ASR	229015	ASR Recorde 229015	ASR Recorde 229015	ASR Recorde 229015	ASR Recorde 10000		GF Annual Ac 10001636-000AS Recording	Recording 10000	Operating	5010Salary	505010	Temp Misc Regular Salaries			1,217	1,216	(1)	1,217			1,216	(1)	See Form 3B			
NGFS	ASR	229015	ASR Recorde 229015	ASR Recorde 229015	ASR Recorde 229015	ASR Recorde 12610		SR State Auth 10022469-000Recorder - En Recorder - En 16627		AS Recorder - 5010Salary	501010	Perm Salaries-Misc-Regular			108,174	145,025	36,851	112,272			36,866	(75,406)	See Form 3B				
NGFS	ASR	229015	ASR Recorde 229015	ASR Recorde 229015	ASR Recorde 229015	ASR Recorde 12610		SR State Auth 10024396-000AS Doc Stora Doc Storage ( 17402		AS Doc Stora5010Salary	501010	Perm Salaries-Misc-Regular			85,231	74,340	(10,891)	88,459			77,568	(10,891)	See Form 3B				
NGFS	ASR	229015	ASR Recorde 229015	ASR Recorde 229015	ASR Recorde 229015	ASR Recorde 12610		SR State Auth 10024397-000AS Page Rec Page Record( 17403		AS Page Rec5010Salary	501010	Perm Salaries-Misc-Regular			382,589	188,337	(194,252)	397,081			30,415	(366,666)	See Form 3B				
NGFS	ASR	229015	ASR Recorde 229015	ASR Recorde 229015	ASR Recorde 229015	ASR Recorde 12610		SR State Auth 10024400-000Assessor 10% ASR 10% Allc 17405		AS Assessor - 5010Salary	501010	Perm Salaries-Misc-Regular			65,894	52,804	(13,090)	68,390			55,300	(13,090)	See Form 3B				
NGFS	ASR	229015	ASR Recorde 229015	ASR Recorde 229015	ASR Recorde 229015	ASR Recorde 12610		SR State Auth 10024400-000Assessor 10% ASR 10% Allc 17405		AS Assessor - 5010Salary	509010	Premium Pay - Misc			1,044	0	(1,044)	1,044			0	(1,044)	See Form 3B				
NGFS	ASR	229015	ASR Recorde 229015	ASR Recorde 229015	ASR Recorde 229015	ASR Recorde 12610		SR State Auth 10024404-000AS Recorder (Recorder Inde 17409		AS Recorder (5010Salary	501010	Perm Salaries-Misc-Regular			198,946	204,966	6,020	207,268			327,272	120,004	See Form 3B				
NGFS	ASR	229015	ASR Recorde 229015	ASR Recorde 229015	ASR Recorde 229015	ASR Recorde 12610		SR State Auth 10032513-000Building, Hom Building, Hom 19830		Perm Salaries-Misc-Regular	501010	Perm Salaries-Misc-Regular			183,405	183,045	(360)	190,353			153,752	(36,601)	See Form 3B				
NGFS	ASR	229015	ASR Recorde 229015	ASR Recorde 229015	ASR Recorde 229015	ASR Recorde 12610		SR State Auth 10032513-000Building, Hom Building, Hom 19830		SB2 Building (5010Salary	509010	Premium Pay - Misc			2,088	0	(2,088)	2,088			0	(2,088)	See Form 3B				
GFS	ASR	229015	ASR Recorde 229015	ASR Recorde 229015	ASR Recorde 229015	ASR Recorde 10000		GF Annual Ac 10001636-000AS Recording	Recording 10000	Operating	5130Fringe	513010	Retire City Misc			89,309	83,989	(5,320)	94,002			84,943	(9,059)	See Form 3B			
GFS	ASR	229015	ASR Recorde 229015	ASR Recorde 229015	ASR Recorde 229015	ASR Recorde 10000		GF Annual Ac 10001636-000AS Recording	Recording 10000	Operating	5130Fringe	514010	Social Security (OASDI & HI)			37,657	35,411	(2,246)	40,052			36,167	(3,885)	See Form 3B			
GFS	ASR	229015	ASR Recorde 229015	ASR Recorde 229015	ASR Recorde 229015	ASR Recorde 10000		GF Annual Ac 10001636-000AS Recording	Recording 10000	Operating	5130Fringe	514020	Social Sec-Medicare(HI Only)			9,113	8,587	(526)	9,660			8,751	(909)	See Form 3B			
GFS	ASR	229015	ASR Recorde 229015	ASR Recorde 229015	ASR Recorde 229015	ASR Recorde 10000		GF Annual Ac 10001636-000AS Recording	Recording 10000	Operating	5130Fringe	515010	Health Service-City Match			40,983	36,634	(4,349)	43,639			38,295	(5,344)	See Form 3B			
GFS	ASR	229015	ASR Recorde 229015	ASR Recorde 229015	ASR Recorde 229015	ASR Recorde 10000		GF Annual Ac 10001636-000AS Recording	Recording 10000	Operating	5130Fringe	515020	Retiree Health-Match-Prop B			4,692	4,421	(271)	4,972			4,503	(469)	See Form 3B			
GFS	ASR	229015	ASR Recorde 229015	ASR Recorde 229015	ASR Recorde 229015	ASR Recorde 10000		GF Annual Ac 10001636-000AS Recording	Recording 10000	Operating	5130Fringe	515030	RetireeHlthCare-CityMatchPropC			1,592	1,500	(92)	1,688			1,529	(159)	See Form 3B			
GFS	ASR	229015	ASR Recorde 229015	ASR Recorde 229015	ASR Recorde 229015	ASR Recorde 10000		GF Annual Ac 10001636-000AS Recording	Recording 10000	Operating	5130Fringe	515710	Dependent Coverage			56,136	55,440	(696)	59,777			56,231	(3,546)	See Form 3B			
GFS	ASR	229015	ASR Recorde 229015	ASR Recorde 229015	ASR Recorde 229015	ASR Recorde 10000		GF Annual Ac 10001636-000AS Recording	Recording 10000	Operating	5130Fringe	516010	Dental Coverage			5,758	5,525	(233)	6,350			5,856	(494)	See Form 3B			
GFS	ASR	229015	ASR Recorde 229015	ASR Recorde 229015	ASR Recorde 229015	ASR Recorde 10000																					



BUDGET FORM 3A: Expenditure Changes  
FY 2025-26 and FY 2026-27

DEPARTMENT: ASR Assessor / Recorder

																		Change	(945,953)	Change	(926,559)							
GFS Type	Dept Grp	Division	Division Title	Section	Section Title	Dept ID	Dept ID Title	Fund	Fund Title	Project-Activity	Project Title	Activity Title	Authority	Authority Title	Account Lvl 5 Title	Account	Account Title	Equipment #	TRIO	Agency Use	FY 2025-26 Base	FY 2025-26 Department	FY 2025-26 Dept - Base	FY 2026-27 Base	FY 2026-27 Department	FY 2026-27 Dept - Base	Explanation of Change	
NGFS	ASR	229015	ASR Recorde	229015	ASR Recorde	229015	ASR Recorde	12610	SR State Auth	10024397-00C	AS Page Rec	Page Record	17403	AS Page Rec	5130Fringe	513010	Retire City Misc				54,208	26,059	(28,149)	55,864	4,242	(51,622)	See Form 3B	
NGFS	ASR	229015	ASR Recorde	229015	ASR Recorde	229015	ASR Recorde	12610	SR State Auth	10024397-00C	AS Page Rec	Page Record	17403	AS Page Rec	5130Fringe	514010	Social Security (OASDI & HI)				23,720	10,715	(13,005)	24,619	1,886	(22,733)	See Form 3B	
NGFS	ASR	229015	ASR Recorde	229015	ASR Recorde	229015	ASR Recorde	12610	SR State Auth	10024397-00C	AS Page Rec	Page Record	17403	AS Page Rec	5130Fringe	514020	Social Sec-Medicare(HI Only)				5,548	2,731	(2,817)	5,758	441	(5,317)	See Form 3B	
NGFS	ASR	229015	ASR Recorde	229015	ASR Recorde	229015	ASR Recorde	12610	SR State Auth	10024397-00C	AS Page Rec	Page Record	17403	AS Page Rec	5130Fringe	515010	Health Service-City Match				15,042	5,309	(9,733)	16,018	2,320	(13,698)	See Form 3B	
NGFS	ASR	229015	ASR Recorde	229015	ASR Recorde	229015	ASR Recorde	12610	SR State Auth	10024397-00C	AS Page Rec	Page Record	17403	AS Page Rec	5130Fringe	515020	Retiree Health-Match-Prop B				2,857	1,406	(1,451)	2,965	227	(2,738)	See Form 3B	
NGFS	ASR	229015	ASR Recorde	229015	ASR Recorde	229015	ASR Recorde	12610	SR State Auth	10024397-00C	AS Page Rec	Page Record	17403	AS Page Rec	5130Fringe	515030	RetireeHlthCare-CityMatchPropC				970	477	(493)	1,006	77	(929)	See Form 3B	
NGFS	ASR	229015	ASR Recorde	229015	ASR Recorde	229015	ASR Recorde	12610	SR State Auth	10024404-00C	AS Page Rec	Page Record	17403	AS Page Rec	5130Fringe	515710	Dependent Coverage				35,340	13,713	(21,627)	37,631	4,151	(33,480)	See Form 3B	
NGFS	ASR	229015	ASR Recorde	229015	ASR Recorde	229015	ASR Recorde	12610	SR State Auth	10024397-00C	AS Page Rec	Page Record	17403	AS Page Rec	5130Fringe	516010	Dental Coverage				3,153	1,202	(1,951)	3,478	407	(3,071)	See Form 3B	
NGFS	ASR	229015	ASR Recorde	229015	ASR Recorde	229015	ASR Recorde	12610	SR State Auth	10024397-00C	AS Page Rec	Page Record	17403	AS Page Rec	5130Fringe	519120	Long Term Disability Insurance				1,569	772	(797)	1,628	124	(1,504)	See Form 3B	
NGFS	ASR	229015	ASR Recorde	229015	ASR Recorde	229015	ASR Recorde	12610	SR State Auth	10024400-00C	AS Assessor	10% ASR	10% Allo	17405	AS Assessor	5130Fringe	513010	Retire City Misc				9,482	7,409	(2,073)	9,773	7,713	(2,060)	See Form 3B
NGFS	ASR	229015	ASR Recorde	229015	ASR Recorde	229015	ASR Recorde	12610	SR State Auth	10024400-00C	AS Assessor	10% ASR	10% Allo	17405	AS Assessor	5130Fringe	514010	Social Security (OASDI & HI)				4,150	3,273	(877)	4,305	3,428	(877)	See Form 3B
NGFS	ASR	229015	ASR Recorde	229015	ASR Recorde	229015	ASR Recorde	12610	SR State Auth	10024400-00C	AS Assessor	10% ASR	10% Allo	17405	AS Assessor	5130Fringe	514020	Social Sec-Medicare(HI Only)				970	765	(205)	1,007	802	(205)	See Form 3B
NGFS	ASR	229015	ASR Recorde	229015	ASR Recorde	229015	ASR Recorde	12610	SR State Auth	10024400-00C	AS Assessor	10% ASR	10% Allo	17405	AS Assessor	5130Fringe	515020	Retiree Health-Match-Prop B				500	394	(106)	519	413	(106)	See Form 3B
NGFS	ASR	229015	ASR Recorde	229015	ASR Recorde	229015	ASR Recorde	12610	SR State Auth	10024400-00C	AS Assessor	10% ASR	10% Allo	17405	AS Assessor	5130Fringe	515030	RetireeHlthCare-CityMatchPropC				170	134	(36)	176	140	(36)	See Form 3B
NGFS	ASR	229015	ASR Recorde	229015	ASR Recorde	229015	ASR Recorde	12610	SR State Auth	10024400-00C	AS Assessor	10% ASR	10% Allo	17405	AS Assessor	5130Fringe	519120	Long Term Disability Insurance				270	216	(54)	280	226	(54)	See Form 3B
NGFS	ASR	229015	ASR Recorde	229015	ASR Recorde	229015	ASR Recorde	12610	SR State Auth	10024404-00C	AS Recorder	Recorder Inde	17409	AS Recorder	5130Fringe	513010	Retire City Misc				28,329	29,283	954	29,318	46,554	17,236	See Form 3B	
NGFS	ASR	229015	ASR Recorde	229015	ASR Recorde	229015	ASR Recorde	12610	SR State Auth	10024404-00C	AS Recorder	Recorder Inde	17409	AS Recorder	5130Fringe	514010	Social Security (OASDI & HI)				12,335	12,708	373	12,851	20,291	7,440	See Form 3B	
NGFS	ASR	229015	ASR Recorde	229015	ASR Recorde	229015	ASR Recorde	12610	SR State Auth	10024404-00C	AS Recorder	Recorder Inde	17409	AS Recorder	5130Fringe	514020	Social Sec-Medicare(HI Only)				2,884	2,971	87	3,006	4,746	1,740	See Form 3B	
NGFS	ASR	229015	ASR Recorde	229015	ASR Recorde	229015	ASR Recorde	12610	SR State Auth	10024404-00C	AS Recorder	Recorder Inde	17409	AS Recorder	5130Fringe	515010	Health Service-City Match				13,204	13,204	0	14,060	21,090	7,030	See Form 3B	
NGFS	ASR	229015	ASR Recorde	229015	ASR Recorde	229015	ASR Recorde	12610	SR State Auth	10024404-00C	AS Recorder	Recorder Inde	17409	AS Recorder	5130Fringe	515020	Retiree Health-Match-Prop B				1,485	1,530	45	1,547	2,443	896	See Form 3B	
NGFS	ASR	229015	ASR Recorde	229015	ASR Recorde	229015	ASR Recorde	12610	SR State Auth	10024404-00C	AS Recorder	Recorder Inde	17409	AS Recorder	5130Fringe	515030	RetireeHlthCare-CityMatchPropC				504	519	15	526	830	304	See Form 3B	
NGFS	ASR	229015	ASR Recorde	229015	ASR Recorde	229015	ASR Recorde	12610	SR State Auth	10024404-00C	AS Recorder	Recorder Inde	17409	AS Recorder	5130Fringe	515710	Dependent Coverage				23,624	23,624	0	25,156	37,734	12,578	See Form 3B	
NGFS	ASR	229015	ASR Recorde	229015	ASR Recorde	229015	ASR Recorde	12610	SR State Auth	10024404-00C	AS Recorder	Recorder Inde	17409	AS Recorder	5130Fringe	516010	Dental Coverage				2,236	2,236	0	2,466	3,699	1,233	See Form 3B	
NGFS	ASR	229015	ASR Recorde	229015	ASR Recorde	229015	ASR Recorde	12610	SR State Auth	10024404-00C	AS Recorder	Recorder Inde	17409	AS Recorder	5130Fringe	519120	Long Term Disability Insurance				815	840	25	849	1,341	492	See Form 3B	
NGFS	ASR	229015	ASR Recorde	229015	ASR Recorde	229015	ASR Recorde	12610	SB2 Building	15130Fringe	513010	Retire City Misc				26,392	25,810	(582)				27,201	21,440	(5,761)	See Form 3B			
NGFS	ASR	229015	ASR Recorde	229015	ASR Recorde	229015	ASR Recorde	12610	SB2 Building	15130Fringe	514010	Social Security (OASDI & HI)				11,500	11,349	(151)				11,931	9,533	(2,398)	See Form 3B			
NGFS	ASR	229015	ASR Recorde	229015	ASR Recorde	229015	ASR Recorde	12610	SB2 Building	15130Fringe	514020	Social Sec-Medicare(HI Only)				2,689	2,653	(36)				2,790	2,229	(561)	See Form 3B			
NGFS	ASR	229015	ASR Recorde	229015	ASR Recorde	229015	ASR Recorde	12610	SB2 Building	15130Fringe	515010	Health Service-City Match				11,026	13,204	2,178				11,740	11,740	0	See Form 3B			
NGFS	ASR	229015	ASR Recorde	229015	ASR Recorde	229015	ASR Recorde	12610	SB2 Building	15130Fringe	515020	Retiree Health-Match-Prop B				1,385	1,367	(18)				1,437	1,148	(289)	See Form 3B			
NGFS	ASR	229015	ASR Recorde	229015	ASR Recorde	229015	ASR Recorde	12610	SB2 Building	15130Fringe	515030	RetireeHlthCare-CityMatchPropC				469	463	(6)				488	390	(98)	See Form 3B			
NGFS	ASR	229015	ASR Recorde	229015	ASR Recorde	229015	ASR Recorde	12610	SB2 Building	15130Fringe	515710	Dependent Coverage				19,726	23,624	3,898				21,005	21,005	0	See Form 3B			
NGFS	ASR	229015	ASR Recorde	229015	ASR Recorde	229015	ASR Recorde	12610	SB2 Building	15130Fringe	516010	Dental Coverage				1,867	2,236	369				2,059	2,059	0	See Form 3B			
NGFS	ASR	229015	ASR Recorde	229015	ASR Recorde	229015	ASR Recorde	12610	SB2 Building	15130Fringe	519120	Long Term Disability Insurance				752	750	(2)				780	630	(150)	See Form 3B			
NGFS	ASR	229015	ASR Recorde	229015	ASR Recorde	229015	ASR Recorde	12610	SR State Auth	10022469-00C	Recorder - En	Recorder - En	16627	AS Recorder	5210NPSvcs	527610	Systems Consulting Services				0	0	0	0	24,317	24,317	Portion of Electronic Recording System costs to be paid for by Recorder fund balance.	
NGFS	ASR	229015	ASR Recorde	229015	ASR Recorde	229015	ASR Recorde	12610	SR State Auth	10024397-00C	AS Page Rec	Page Record	17403	AS Page Rec	5210NPSvcs	535960	Software Licensing Fees				0	0	0	0	192,941	192,941	Portion of Recorder's system's maintenance and support and Restrictive Covenant project paid for by Recorder fund balance.	
GFS	ASR	210811	ASR Standarc	210811	ASR Standarc	210811	ASR Standarc	10000	GF Annual Ac	10038560-00C	AS Standards	Standards, Mi	10000	Operating	5010Salary	501010	Perm Salaries-Misc-Regular				2,702,910	3,107,475	404,565	2,812,980	3,179,012	366,032	See Form 3B	
GFS	ASR	210811	ASR Standarc	210811	ASR Standarc	210811	ASR Standarc	10000	GF Annual Ac	10038560-00C	AS Standards	Standards, Mi	10000	Operating	5010Salary	509010	Premium Pay - Misc				15,680	31,080	15,400	15,680	31,080	15,400	See Form 3B	
GFS	ASR	210811	ASR Standarc	210811	ASR Standarc	210811	ASR Standarc	10000	GF Annual Ac	10038560-00C	AS Standards	Standards, Mi	10000	Operating	5130Fringe	513010	Retire City Misc				377,957	435,683	57,726	390,584	442,371	51,787	See Form 3B	
GFS	ASR	210811	ASR Standarc	210811	ASR Standarc	210811	ASR Standarc	10000	GF Annual Ac	10038560-00C	AS Standards	Standards, Mi	10000	Operating	5130Fringe	514010	Social Security (OASDI & HI)				165,762	191,800	26,038	172,959	196,608	23,649	See Form 3B	
GFS	ASR	210811	ASR Standarc	210811	ASR Standarc	210811	ASR Standarc	10000	GF Annual Ac	10038560-00C	AS Standards	Standards, Mi	10000	Operating	5130Fringe	514020	Social Sec-Medicare(HI Only)				39,419	45,507	6,088	41,013	46,544	5,531	See Form 3B	
GFS	ASR	210811	ASR Standarc	210811	ASR Standarc	210811	ASR Standarc	10000	GF Annual Ac	10038560-00C	AS Standards	Standards, Mi	10000	Operating	5130Fringe	515010	Health Service-City Match				98,154	117,505	19,351	104,529	123,440	18,911	See Form 3B	
GFS	ASR	210811	ASR Standarc	210811	ASR Standarc	210811	ASR Standarc	10000	GF Annual Ac	10038560-00C	AS Standards	Standards, Mi	10000	Operating	5130Fringe	515020	Retiree Health-Match-Prop B				20,297	23,434	3,137	21,120	23,968	2,848	See Form 3B	
GFS	ASR	210811	ASR Standarc	210811	ASR Standarc	210811	ASR Standarc	10000	GF Annual Ac	10038560-00C	AS Standards	Standards, Mi	10000	Operating	5130Fringe	515030	RetireeHlthCare-CityMatchPropC				6,890	7,953	1,063	7,168	8,135	967	See Form 3B	
GFS	ASR	210811	ASR Standarc	210811	ASR Standarc	210811	ASR Standarc	10000	GF Annual Ac	10038560-00C	AS Standards	Standards, Mi	10000	Operating	5130Fringe	515710	Dependent Coverage				239,186	279,816	40,630	254,694	291,297	36,603	See Form 3B	
GFS	ASR	210811	ASR Standarc	210811	ASR Standarc	210811	ASR Standarc	10000	GF Annual Ac	10038560-00C	AS Standards	Standards, Mi	10000	Operating	5130Fringe	516010	Dental Coverage				21,302	25,009	3,707	23,499	27,024	3,525	See Form 3B	
GFS	ASR	210811	ASR Standarc	210811	ASR Standarc	210811	ASR Standarc	10000	GF Annual Ac	10038560-00C	AS Standards	Standards, Mi	10000	Operating	5130Fringe	519120	Long Term Disability Insurance				8,728	10,385	1,657	9,092	10,591	1,499	See Form 3B	
GFS	ASR	210811	ASR Standarc	210811	ASR Standarc	210811	ASR Standarc	10000	GF Annual Ac	10038560-00C	AS																	

BUDGET FORM 38: Position Changes  
FY 2025-26 and FY 2026-27

DEPARTMENT: ASR Assessor / Recorder

																					Position Code	Total FY FTE Change		(4.44)	Total BY Amount Change		(1,063,723)	Total BY1 FTE Change		(6.68)	Total BY1 Amount Change		(1,361,668)					
QPS Type	Dept	Div	Division Title	Section	Section Title	Dept ID	Dept ID Title	Fund	Fund Title	Project/Activity	Project Title	Activity Title	Authority	Authority Title	Account Lvl	Agency Use	Job Class	Job Title	Status	Action	Position	FY 2025-26 Base FTE	FY 2025-26 Dept FTE	FY 2025-26 Base Amount	FY 2025-26 Dept Amount	FY 2025-26 Base FTE	FY 2025-26 Dept FTE	FY 2025-26 Base Amount	FY 2025-26 Dept Amount	FY 2026-27 Base FTE	FY 2026-27 Dept FTE	FY 2026-27 Base Amount	FY 2026-27 Dept Amount	FY 2026-27 Base FTE	FY 2026-27 Dept FTE	FY 2026-27 Base Amount	FY 2026-27 Dept Amount	Explanation of Change
REASSIGNMENTS																						0.00			(0)			0.00			4							
GFS	ASR	210811	ASR Standards Mapping Analysis	210811	ASR Standards Mapping An	210811	ASR Standards Mapping Analysis	10000	GF Annual Account Ch	10038660-0001	AS Standards Mapping Analysis	Standards, Mapping & Analysis	10000	Operating	5010Salary	1820_C	Junior Administrative Analyst	A	R	01130815-1	1.00	0.00	(1.00)	97,701	0	(97,701)	1.00	0.00	(1.00)	101,402	0	(101,402)	Reassigned (1) 1820 Junior Administrative Analyst from Standards Mapping & Analysis to Public Service to reflect employee's actual division.					
GFS	ASR	210811	ASR Standards Mapping Analysis	210811	ASR Standards Mapping An	210811	ASR Standards Mapping Analysis	10000	GF Annual Account Ch	10038660-0001	AS Standards Mapping Analysis	Standards, Mapping & Analysis	10000	Operating	5130Fringe	1820_C	Junior Administrative Analyst	A	R	01130815-1	0.00	1.00	1.00	0	42,443	0	(42,443)	0.00	1.00	0.00	44,518	0	(44,518)					
GFS	ASR	196646	ASR Public Service	196646	ASR Public Service	196646	ASR Public Service	10000	GF Annual Account Ch	10026874-0001	AS Customer Service	Customer Service	10000	Operating	5010Salary	1820_C	Junior Administrative Analyst	A	R	01130815-1	0.00	1.00	1.00	0	97,701	0	97,701	0.00	1.00	1.00	0	101,402	101,402					
GFS	ASR	196646	ASR Public Service	196646	ASR Public Service	196646	ASR Public Service	10000	GF Annual Account Ch	10026874-0001	AS Customer Service	Customer Service	10000	Operating	5130Fringe	1820_C	Junior Administrative Analyst	A	R	01130815-1	0.00	1.00	1.00	0	42,443	0	(42,443)	0.00	1.00	0.00	44,518	0	(44,518)					
GFS	ASR	229015	ASR Recorder	229015	ASR Recorder	229015	ASR Recorder	10000	GF Annual Account Ch	10010336-0001	AS Recording	Recording	10000	Operating	5010Salary	1822_C	Administrative Analyst	A	R	01129760-1	0.50	0.00	(0.50)	64,245	0	(64,245)	0.50	0.00	(0.50)	66,679	0	(66,679)	Reassigned (1) 1822 Administrative Analyst from Recorder to Administration to reflect employee's actual division.					
NGFS	ASR	229015	ASR Recorder	229015	ASR Recorder	229015	ASR Recorder	12610	SR State Auth Special Rev	10022469-0001	Recorder - Encoding	Recorder - Encoding	16627	AS Recorder - Encoding	5010Salary	1822_C	Administrative Analyst	A	R	01129760-1	0.50	0.00	(0.50)	64,245	0	(64,245)	0.50	0.00	(0.50)	66,679	0	(66,679)						
NGFS	ASR	229015	ASR Recorder	229015	ASR Recorder	229015	ASR Recorder	12610	SR State Auth Special Rev	10022469-0001	Recorder - Encoding	Recorder - Encoding	16627	AS Recorder - Encoding	5130Fringe	1822_C	Administrative Analyst	A	R	01129760-1	0.00	1.00	1.00	0	24,832	0	(24,832)	0.00	1.00	0.00	25,989	0	(25,989)					
GFS	ASR	229014	ASR Administration	229014	ASR Administration	229014	ASR Administration	10000	GF Annual Account Ch	10010334-0001	AS Administration	Administration	10000	Operating	5010Salary	1822_C	Administrative Analyst	A	R	01129760-1	0.00	1.00	1.00	0	128,490	0	128,490	0.00	1.00	1.00	0	133,357	133,357					
GFS	ASR	229014	ASR Administration	229014	ASR Administration	229014	ASR Administration	10000	GF Annual Account Ch	10010334-0001	AS Administration	Administration	10000	Operating	5130Fringe	1822_C	Administrative Analyst	A	R	01129760-1	0.00	1.00	1.00	0	49,663	0	(49,663)	0.00	1.00	0.00	51,981	0	(51,981)					
GFS	ASR	229014	ASR Administration	229014	ASR Administration	229014	ASR Administration	10000	GF Annual Account Ch	10010334-0001	AS Administration	Administration	10000	Operating	5010Salary	1823_C	Senior Administrative Analyst	A	R	01129189-1	1.00	0.00	(1.00)	149,730	0	(149,730)	1.00	0.00	(1.00)	155,402	0	(155,402)	Reassigned (1) 1823 Senior Administrative Analyst from Administration to Real Property to reflect employee's actual division.					
GFS	ASR	229014	ASR Administration	229014	ASR Administration	229014	ASR Administration	10000	GF Annual Account Ch	10010334-0001	AS Administration	Administration	10000	Operating	5130Fringe	1823_C	Senior Administrative Analyst	A	R	01129189-1	0.00	1.00	1.00	0	54,616	0	(54,616)	0.00	1.00	0.00	57,122	0	(57,122)					
GFS	ASR	229011	ASR Real Property	229011	ASR Real Property	229011	ASR Real Property	10000	GF Annual Account Ch	10010335-0001	AS Assessments	Real Property	10000	Operating	5010Salary	1823_C	Senior Administrative Analyst	A	R	01129189-1	0.00	1.00	1.00	0	149,730	0	149,730	0.00	1.00	1.00	0	155,402	155,402					
GFS	ASR	229011	ASR Real Property	229011	ASR Real Property	229011	ASR Real Property	10000	GF Annual Account Ch	10010335-0001	AS Assessments	Real Property	10000	Operating	5130Fringe	1823_C	Senior Administrative Analyst	A	R	01129189-1	0.00	1.00	1.00	0	54,616	0	(54,616)	0.00	1.00	0.00	57,122	0	(57,122)					
NGFS	ASR	229015	ASR Recorder	229015	ASR Recorder	229015	ASR Recorder	12610	SR State Auth Special Rev	10024397-0001	AS Page Recorders Modernizatio	Page Recorders Modernization	17403	AS Page Recorders Modernizatio	5010Salary	1093_C	IT Operations Support Administra	A	R	01065005-1	1.00	0.00	(1.00)	132,619	0	(132,619)	1.00	0.00	(1.00)	137,642	0	(137,642)	Reassigned (1) 1093 IT Operations Support Administrator III from self-supporting funds to General Fund in BY to not overdraw Modernization's fund balance.					
NGFS	ASR	229015	ASR Recorder	229015	ASR Recorder	229015	ASR Recorder	12610	SR State Auth Special Rev	10024397-0001	AS Page Recorders Modernizatio	Page Recorders Modernization	17403	AS Page Recorders Modernizatio	5130Fringe	1093_C	IT Operations Support Administra	A	R	01065005-1	0.00	1.00	1.00	0	51,323	0	(51,323)	0.00	1.00	0.00	53,722	0	(53,722)					
GFS	ASR	229014	ASR Administration	229014	ASR Administration	229014	ASR Administration	10000	GF Annual Account Ch	10010334-0001	AS Administration	Administration	10000	Operating	5010Salary	1093_C	IT Operations Support Administra	A	R	01065005-1	0.00	1.00	1.00	0	132,619	0	132,619	0.00	1.00	1.00	0	137,642	137,642					
GFS	ASR	229014	ASR Administration	229014	ASR Administration	229014	ASR Administration	10000	GF Annual Account Ch	10010334-0001	AS Administration	Administration	10000	Operating	5130Fringe	1093_C	IT Operations Support Administra	A	R	01065005-1	0.00	1.00	1.00	0	51,323	0	(51,323)	0.00	1.00	0.00	53,722	0	(53,722)					
GFS	ASR	196646	ASR Public Service	196646	ASR Public Service	196646	ASR Public Service	10000	GF Annual Account Ch	10026874-0001	AS Customer Service	Customer Service	10000	Operating	5010Salary	4214_C	Assessor-Recorder Office Specia	A	R	01123439-1	1.00	0.00	(1.00)	94,671	0	(94,671)	1.00	0.00	(1.00)	98,257	0	(98,257)	Reassigned (1) 4214 ASR Office Specialist from Public Service to Standards to reflect employee's actual division.					
GFS	ASR	196646	ASR Public Service	196646	ASR Public Service	196646	ASR Public Service	10000	GF Annual Account Ch	10026874-0001	AS Customer Service	Customer Service	10000	Operating	5130Fringe	4214_C	Assessor-Recorder Office Specia	A	R	01123439-1	0.00	1.00	1.00	0	41,733	0	(41,733)	0.00	1.00	0.00	43,785	0	(43,785)					
GFS	ASR	210811	ASR Standards Mapping Analysis	210811	ASR Standards Mapping An	210811	ASR Standards Mapping Analysis	10000	GF Annual Account Ch	10038660-0001	AS Standards Mapping Analysis	Standards, Mapping & Analysis	10000	Operating	5010Salary	4214_C	Assessor-Recorder Office Specia	A	R	01123439-1	0.00	1.00	1.00	0	94,671	0	94,671	0.00	1.00	1.00	0	98,257	98,257					
GFS	ASR	210811	ASR Standards Mapping Analysis	210811	ASR Standards Mapping An	210811	ASR Standards Mapping Analysis	10000	GF Annual Account Ch	10038660-0001	AS Standards Mapping Analysis	Standards, Mapping & Analysis	10000	Operating	5130Fringe	4214_C	Assessor-Recorder Office Specia	A	R	01123439-1	0.00	1.00	1.00	0	41,733	0	(41,733)	0.00	1.00	0.00	43,785	0	(43,785)					
GFS	ASR	196644	ASR Transactions	196644	ASR Transactions	196644	ASR Transactions	10000	GF Annual Account Ch	10032517-0001	AS Transactions	Transactions	10000	Operating	5010Salary	4215_C	Assessor-Recorder Senior Office	A	R	01082042-1	1.00	0.00	(1.00)	109,823	0	(109,823)	1.00	0.00	(1.00)	113,984	0	(113,984)	Reassigned (1) 4215 ASR Senior Office Specialist from Transactions to Standards to reflect employee's actual division.					
GFS	ASR	196644	ASR Transactions	196644	ASR Transactions	196644	ASR Transactions	10000	GF Annual Account Ch	10032517-0001	AS Transactions	Transactions	10000	Operating	5130Fringe	4215_C	Assessor-Recorder Senior Office	A	R	01082042-1	0.00	1.00	1.00	0	45,285	0	(45,285)	0.00	1.00	0.00	47,456	0	(47,456)					
GFS	ASR	210811	ASR Standards Mapping Analysis	210811	ASR Standards Mapping An	210811	ASR Standards Mapping Analysis	10000	GF Annual Account Ch	10038660-0001	AS Standards Mapping Analysis	Standards, Mapping & Analysis	10000	Operating	5010Salary	4215_C	Assessor-Recorder Senior Office	A	R	01082042-1	0.00	1.00	1.00	0	109,823	0	109,823	0.00	1.00	1.00	0	113,984	113,984					
GFS	ASR	210811	ASR Standards Mapping Analysis	210811	ASR Standards Mapping An	210811	ASR Standards Mapping Analysis	10000	GF Annual Account Ch	10038660-0001	AS Standards Mapping Analysis	Standards, Mapping & Analysis	10000	Operating	5130Fringe	4215_C	Assessor-Recorder Senior Office	A	R	01122285-1	0.00	1.00	1.00	0	45,285	0	(45,285)	0.00	1.00	0.00	47,456	0	(47,456)					
GFS	ASR	196644	ASR Transactions	196644	ASR Transactions	196644	ASR Transactions	10000	GF Annual Account Ch	10032517-0001	AS Transactions	Transactions	10000	Operating	5010Salary	4215_C	Assessor-Recorder Senior Office	A	R	01122285-1	1.00	0.00	(1.00)	109,823	0	(109,823)	1.00	0.00	(1.00)	113,984	0	(113,984)	Reassigned (1) 4215 ASR Senior Office Specialist from Transactions to Standards to reflect employee's actual division.					
GFS	ASR	196644	ASR Transactions	196644	ASR Transactions	196644	ASR Transactions	10000	GF Annual Account Ch	10032517-0001	AS Transactions	Transactions	10000	Operating	5130Fringe	4215_C	Assessor-Recorder Senior Office	A	R	01122285-1	0.00	1.00	1.00	0	45,285	0	(45,285)	0.00	1.00	0.00	47,456	0	(47,456)					
GFS	ASR	210811	ASR Standards Mapping Analysis	210811	ASR Standards Mapping An	210811	ASR Standards Mapping Analysis	10000	GF Annual Account Ch	10038660-0001	AS Standards Mapping Analysis	Standards, Mapping & Analysis	10000	Operating	5010Salary	4215_C	Assessor-Recorder Senior Office	A	R	01124546-1	1.00	0.00	(1.00)	109,823	0	(109,823)	1.00	0.00	(1.00)	113,984	0	(113,984)	Reassigned (1) 4215 ASR Senior Office Specialist from Transactions to Standards to reflect employee's actual division.					
GFS	ASR	196644	ASR Transactions	196644	ASR Transactions	1																																

BUDGET FORM 3B: Position Changes  
FY 2025-26 and FY 2026-27

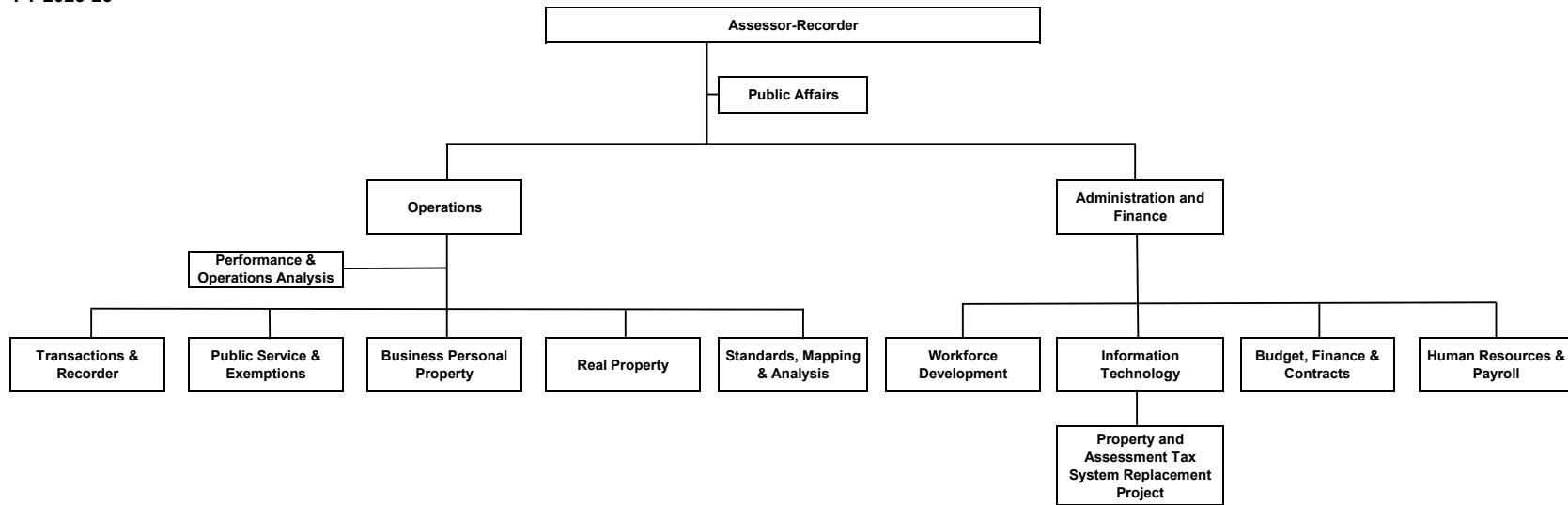
																				Position Code	Total FY FTE Change		(4,44)		Total BY Amount Change		(1,683.72)		Total BY FTE Change		(6.58)		Total BY Amount Change		(1,361,688)			
Ops Type	Dept Org	Division	Division Title	Section	Section Title	Dept ID	Dept ID Title	Fund	Fund Title	Project/Activity	Project Title	Activity Title	Authority	Authority Title	Account Lvl	Agency Use	Job Class	Job Title	Status	Action	Position	FY 2025-26 Base FTE	FY 2025-26 Dept FTE	FY 2025-26 28 Dept - Base FTE	FY 2025-26 Base Amount	FY 2025-26 Dept Amount	FY 2025-26 Dept - Base Amount	FY 2026-27 Base FTE	FY 2026-27 Dept FTE	FY 2026-27 27 Dept - Base FTE	FY 2026-27 Base Amount	FY 2026-27 Dept Amount	FY 2026-27 Dept - Base Amount	Explanation of Change				
REASSIGNMENTS & SUBSTITUTIONS																																						
GFS	ASR	220011	ASR Real Property	220011	ASR Real Property	220011	ASR Real Property	10000	GF Annual Account Chrt	10001635-0001	AS Assessments	Real Property	10000	Operating	5010Salary		0923_C	Manager II	A	S	01132182-1	0.00	0.50	0.50	0	93,276	93,276	0.00	1.00	1.00	0	193,618	193,618	0	Substitution of (1) 0931 Manager III to (1) 0923 Manager II to restructure the management of the Real Property Division and support the operationalization and maintenance of the new SMART system. Reassignment of 3 FTE from COIT funding to General Fund in BY and the full 1 FTE to General Fund in BY+1.			
GFS	ASR	220011	ASR Real Property	220011	ASR Real Property	220011	ASR Real Property	10000	GF Annual Account Chrt	10001635-0001	AS Assessments	Real Property	10000	Operating	5130Fringe		0923_C	Manager II	A	S	01132182-1	0.00	0.50	0.50	0	34,496	34,496	0.00	0	0	0	72,316	72,316	0	Division of (1) 0941 Manager VI to (1) 07016 Project Director to manage the operationalization and maintenance of the new SMART system. Reassignment of 1 FTE from COIT funding to General Fund in BY+1.			
GFS	ASR	220014	ASR Administration	220014	ASR Administration	220014	ASR Administration	10000	GF Annual Account Chrt	10001634-0001	AS Administration	Administration	10000	Operating	5010Salary		1070_C	IS Project Director	A	S	01138331-1	0.00	0.00	0.00	0	0	0	0.00	1.00	1.00	0	218,253	218,253	0				
GFS	ASR	220014	ASR Administration	220014	ASR Administration	220014	ASR Administration	10000	GF Annual Account Chrt	10001634-0001	AS Administration	Administration	10000	Operating	5130Fringe		1070_C	IS Project Director	A	S	01138331-1	0.00	0.00	0.00	0	0	0	0.00	0	0	0	69,668	69,668	0				
PREMIUM																																						
GFS	ASR	196644	ASR Transactions	196644	ASR Transactions	196644	ASR Transactions	10000	GF Annual Account Chrt	10023217-0001	AS Transactions	Transactions	10000	Operating	5010Salary		PREMM_E	Premium Pay - Miscellaneous	S		NEWP157292	0	1,044	1,044	0	1,044	1,044	0.00	0	0	0	1,044	1,044	0	Changes based on actual estimated premium for auto allowance, advanced certification premium, bilingual premium, and longevity pay.			
GFS	ASR	196644	ASR Transactions	196644	ASR Transactions	196644	ASR Transactions	10000	GF Annual Account Chrt	10023217-0001	AS Transactions	Transactions	10000	Operating	5130Fringe		PREMM_E	Premium Pay - Miscellaneous	S		NEWP157292	0	91	91	0	91	91	0.00	0	0	0	91	91	0				
GFS	ASR	196645	ASR Exemptions	196645	ASR Exemptions	196645	ASR Exemptions	10000	GF Annual Account Chrt	10023214-0001	AS Exemptions	Exemptions	10000	Operating	5010Salary		PREMM_E	Premium Pay - Miscellaneous	S		(1,044)	(1,044)	(1,044)	(1,044)	(1,044)	(1,044)	0.00	0	0	0	(1,044)	(1,044)	0					
GFS	ASR	196645	ASR Exemptions	196645	ASR Exemptions	196645	ASR Exemptions	10000	GF Annual Account Chrt	10023214-0001	AS Exemptions	Exemptions	10000	Operating	5130Fringe		PREMM_E	Premium Pay - Miscellaneous	S		(91)	(91)	(91)	(91)	(91)	(91)	0.00	0	0	0	(91)	(91)	0					
GFS	ASR	196646	ASR Public Service	196646	ASR Public Service	196646	ASR Public Service	10000	GF Annual Account Chrt	10026874-0001	AS Customer Service	Customer Service	10000	Operating	5010Salary		PREMM_E	Premium Pay - Miscellaneous	S		NEWP500586	0	1,050	1,050	0	1,050	1,050	0.00	0	0	0	1,050	1,050	0				
GFS	ASR	196646	ASR Public Service	196646	ASR Public Service	196646	ASR Public Service	10000	GF Annual Account Chrt	10026874-0001	AS Customer Service	Customer Service	10000	Operating	5130Fringe		PREMM_E	Premium Pay - Miscellaneous	S		NEWP500586	0	91	91	0	91	91	0.00	0	0	0	91	91	0				
GFS	ASR	210811	ASR Standards Mapping Analysis	210811	ASR Standards Mapping Analysis	210811	ASR Standards Mapping Analysis	10000	GF Annual Account Chrt	10038960-0001	AS Standards Mapping Analysis	Standards, Mapping & Analysis	10000	Operating	5010Salary		PREMM_E	Premium Pay - Miscellaneous	S		NEWP021870	0	15,450	15,450	0	15,450	15,450	0.00	0	0	0	15,450	15,450	0				
GFS	ASR	210811	ASR Standards Mapping Analysis	210811	ASR Standards Mapping Analysis	210811	ASR Standards Mapping Analysis	10000	GF Annual Account Chrt	10038960-0001	AS Standards Mapping Analysis	Standards, Mapping & Analysis	10000	Operating	5130Fringe		PREMM_E	Premium Pay - Miscellaneous	S		NEWP021870	0	1,332	1,332	0	1,332	1,332	0.00	0	0	0	1,332	1,332	0				
GFS	ASR	220011	ASR Real Property	220011	ASR Real Property	220011	ASR Real Property	10000	GF Annual Account Chrt	10001635-0001	AS Assessments	Real Property	10000	Operating	5010Salary		PREMM_E	Premium Pay - Miscellaneous	S		NEWP60186	0	36,776	36,776	0	36,776	36,776	0.00	0	0	0	36,776	36,776	0				
GFS	ASR	220011	ASR Real Property	220011	ASR Real Property	220011	ASR Real Property	10000	GF Annual Account Chrt	10001635-0001	AS Assessments	Real Property	10000	Operating	5130Fringe		PREMM_E	Premium Pay - Miscellaneous	S		NEWP60186	0	3,181	3,181	0	3,181	3,181	0.00	0	0	0	3,181	3,181	0				
GFS	ASR	220012	ASR Personal Property	220012	ASR Personal Property	220012	ASR Personal Property	10000	GF Annual Account Chrt	10023216-0001	AS Personal Property	Personal Property	10000	Operating	5010Salary		PREMM_E	Premium Pay - Miscellaneous	S		NEWP68414	0	15,044	15,044	0	15,044	15,044	0.00	0	0	0	15,044	15,044	0				
GFS	ASR	220012	ASR Personal Property	220012	ASR Personal Property	220012	ASR Personal Property	10000	GF Annual Account Chrt	10023216-0001	AS Personal Property	Personal Property	10000	Operating	5130Fringe		PREMM_E	Premium Pay - Miscellaneous	S		NEWP68414	0	1,301	1,301	0	1,301	1,301	0.00	0	0	0	1,301	1,301	0				
GFS	ASR	220014	ASR Administration	220014	ASR Administration	220014	ASR Administration	10000	GF Annual Account Chrt	10001634-0001	AS Administration	Administration	10000	Operating	5010Salary		PREMM_E	Premium Pay - Miscellaneous	S		NEWP88559	0	1,566	1,566	0	1,566	1,566	0.00	0	0	0	1,566	1,566	0				
GFS	ASR	220014	ASR Administration	220014	ASR Administration	220014	ASR Administration	10000	GF Annual Account Chrt	10001634-0001	AS Administration	Administration	10000	Operating	5130Fringe		PREMM_E	Premium Pay - Miscellaneous	S		NEWP88559	0	136	136	0	136	136	0.00	0	0	0	136	136	0				
NGFS	ASR	220015	ASR Recorder	220015	ASR Recorder	220015	ASR Recorder	12610	SR State Auth Special Rev	1024400-0001	Assessor 10% Alloc Real Estate	ASR 10% Alloc Real Estate Rec	17405	AS Assessor 10% Alloc Real Est	5010Salary		PREMM_E	Premium Pay - Miscellaneous	S		(1,044)	(1,044)	(1,044)	(1,044)	(1,044)	0.00	0	0	0	(1,044)	(1,044)	0						
NGFS	ASR	220015	ASR Recorder	220015	ASR Recorder	220015	ASR Recorder	12610	SR State Auth Special Rev	1024400-0001	Assessor 10% Alloc Real Estate	ASR 10% Alloc Real Estate Rec	17405	AS Assessor 10% Alloc Real Est	5130Fringe		PREMM_E	Premium Pay - Miscellaneous	S		(91)	(91)	(91)	(91)	(91)	0.00	0	0	0	(91)	(91)	0						
NGFS	ASR	220015	ASR Recorder	220015	ASR Recorder	220015	ASR Recorder	12610	SR State Auth Special Rev	10023213-0001	Building, Home & Jobs Fee	Building, Home & Jobs - State	19830	S82 Building Homes & Jobs Fee	5010Salary		PREMM_E	Premium Pay - Miscellaneous	S		(2,085)	(2,085)	(2,085)	(2,085)	(2,085)	0.00	0	0	0	(2,085)	(2,085)	0						
NGFS	ASR	220015	ASR Recorder	220015	ASR Recorder	220015	ASR Recorder	12610	SR State Auth Special Rev	10023213-0001	Building, Home & Jobs Fee	Building, Home & Jobs - State	19830	S82 Building Homes & Jobs Fee	5130Fringe		PREMM_E	Premium Pay - Miscellaneous	S		(180)	(180)	(180)	(180)	(180)	0.00	0	0	0	(180)	(180)	0						
STEP																																						
GFS	ASR	196644	ASR Transactions	196644	ASR Transactions	196644	ASR Transactions	10000	GF Annual Account Chrt	10023217-0001	AS Transactions	Transactions	10000	Operating	5010Salary		STEMP_C	Step Adjustments, Miscellaneous	S		NEWP33828	0	(253)	(253)	0	(253)	(253)	0.00	0	0	0	(253)	(253)	0	The step adjustment is charged annually to reflect the actual estimated cost of employee salaries given scheduled step adjustments.			
GFS	ASR	196644	ASR Transactions	196644	ASR Transactions	196644	ASR Transactions	10000	GF Annual Account Chrt	10023217-0001	AS Transactions	Transactions	10000	Operating	5130Fringe		STEMP_C	Step Adjustments, Miscellaneous	S		NEWP33828	0	(64)	(64)	0	(64)	(64)	0.00	0	0	0	(64)	(64)	0				
GFS	ASR	196645	ASR Exemptions	196645	ASR Exemptions	196645	ASR Exemptions	10000	GF Annual Account Chrt	10023214-0001	AS Exemptions	Exemptions	10000	Operating	5010Salary		STEMP_C	Step Adjustments, Miscellaneous	S		(14,985)	(14,985)	(14,985)	(14,985)	(14,985)	0.00	0	0	0	(14,985)	(14,985)	0						
GFS	ASR	196645	ASR Exemptions	196645	ASR Exemptions	196645	ASR Exemptions	10000	GF Annual Account Chrt	10023214-0001	AS Exemptions	Exemptions	10000	Operating	5130Fringe		STEMP_C	Step Adjustments, Miscellaneous	S		(3,731)	(3,731)	(3,731)	(3,731)	(3,731)	0.00	0	0	0	(3,731)	(3,731)	0						
GFS	ASR	196646	ASR Public Service	196646	ASR Public Service	196646	ASR Public Service	10000	GF Annual Account Chrt	10026874-0001	AS Customer Service	Customer Service	10000	Operating	5010Salary		STEMP_C	Step Adjustments, Miscellaneous	S		NEWP60625	0	(3,860)	(3,860)	0	(3,860)	(3,860)	0.00	0	0	0	(3,860)	(3,860)	0				
GFS	ASR	196646	ASR Public Service	196646	ASR Public Service	196646	ASR Public Service	10000	GF Annual Account Chrt	10026874-0001	AS Customer Service	Customer Service	10000	Operating	5130Fringe		STEMP_C	Step Adjustments, Miscellaneous	S		NEWP60625	0	(991)	(991)	0	(991)	(991)	0.00	0	0	0	(991)	(991)	0				
GFS	ASR	210811	ASR Standards Mapping Analysis	210811	ASR Standards Mapping Analysis	210811	ASR Standards Mapping Analysis	10000	GF Annual Account Chrt	10038960-0001	AS Standards Mapping Analysis	Standards, Mapping & Analysis	10000	Operating	5010Salary		STEMP_C	Step Adjustments, Miscellaneous	S		NEWP24260	0	15,668	15,668	0	15,668	15,668	0.00	0	0	0	15,668	15,668	0				
GFS	ASR	210811	ASR Standards Mapping Analysis	210811	ASR Standards Mapping Analysis	210811	ASR Standards Mapping Analysis	10000	GF Annual Account Chrt	10038960-0001	AS Standards Mapping Analysis	Standards, Mapping & Analysis	10000	Operating	5130Fringe		STEMP_C	Step Adjustments, Miscellaneous	S		NEWP24260	0	3,909	3,909	0	3,909	3,909	0.00	0	0	0	3,909	3,909	0				
GFS	ASR	220011	ASR Real Property	220011	ASR Real Property	220011	ASR Real Property	10000	GF Annual Account Chrt	10001635-0001	AS Assessments	Real Property	10000	Operating	5010Salary		STEMP_C	Step Adjustments, Miscellaneous	S		(265,851)	(265,851)	(265,851)	(265,851)	(265,851)	0.00	0	0	0	(265,851)	(265,851)	0						
GFS	ASR	220011	ASR Real Property	220011	ASR Real Property	220011	ASR Real Property	10000	GF Annual Account Chrt	10001635-0001	AS Assessments	Real Property	10000	Operating	5130Fringe		STEMP_C	Step Adjustments, Miscellaneous	S		NEWP44031	0	(66,198)	(66,198)	0	(66,198)	(66,198)	0.00	0	0	0	(66,198)	(66,198)	0				
GFS	ASR	220012	ASR Personal Property	220012	ASR Personal Property	220012	ASR Personal Property	10000	GF Annual Account Chrt	10023216-0001	AS Personal Property	Personal Property	10000	Operating	5010Salary		STEMP_C	Step Adjustments, Miscellaneous	S		NEWP90184	0	4,872	4,872	0	4,872	4,872	0.00	0	0	0	4,872	4,872	0				
GFS	ASR	220012	ASR Personal Property	220012	ASR Personal Property	220012	ASR Personal Property	10000	GF Annual Account Chrt	10023216-0001	AS Personal Property	Personal Property	10000	Operating	5130Fringe		STEMP_C	Step Adjustments, Miscellaneous	S		NEWP90184	0	1,213	1,213	0	1,268	1,268	0.00	0	0	0	1,268	1,268	0				
GFS	ASR	220014	ASR Administration	220014	ASR Administration	220014	ASR Administration	10000	GF Annual Account Chrt	10001634-0001	AS Administration	Administration	10000	Operating	5010Salary		STEMP_C	Step Adjustments, Miscellaneous	S		NEWP08744	0	27,747	27,747	0	27,747	27,747	0.00	0	0	0	27,747	27,747	0				
GFS	ASR	220014	ASR Administration	220014	ASR Administration	220014	ASR Administration	10000	GF Annual Account Chrt	10001634-0001	AS Administration	Administration	10000	Operating	5130Fringe		STEMP_C	Step Adjustments, Miscellaneous	S		NEWP08744	0	6,908	6,908	0	6,880	6,880	0.00	0	0	0	6,880	6,880	0				
GFS	ASR	220015	ASR Recorder	220015	ASR Recorder	220015	ASR Recorder	10000	GF Annual Account Chrt	10001636-0001	AS Recording	Recording	10000	Operating	5010Salary		STEMP_C	Step Adjustments, Miscellaneous	S		NEWP77269	0	(7,213)	(7,213)	0	(7,213)	(7,213)	0.00	0	0	0	(7,213)	(7,213)	0				
GFS	ASR	220015	ASR Recorder	220015	ASR Recorder	220015	ASR Recorder	10000	GF Annual Account Chrt	10001636-0001	AS Recording	Recording	10000	Operating	5130Fringe		STEMP_C	Step Adjustments, Miscellaneous	S		NEWP77269	0	(1,797)	(1,797)	0	(1,789)	(1,789)	0.00	0	0	0	(1,789)	(1,789)	0				
NGFS	ASR	220015	AS																																			

## FY 2024-25 and FY 2025-26

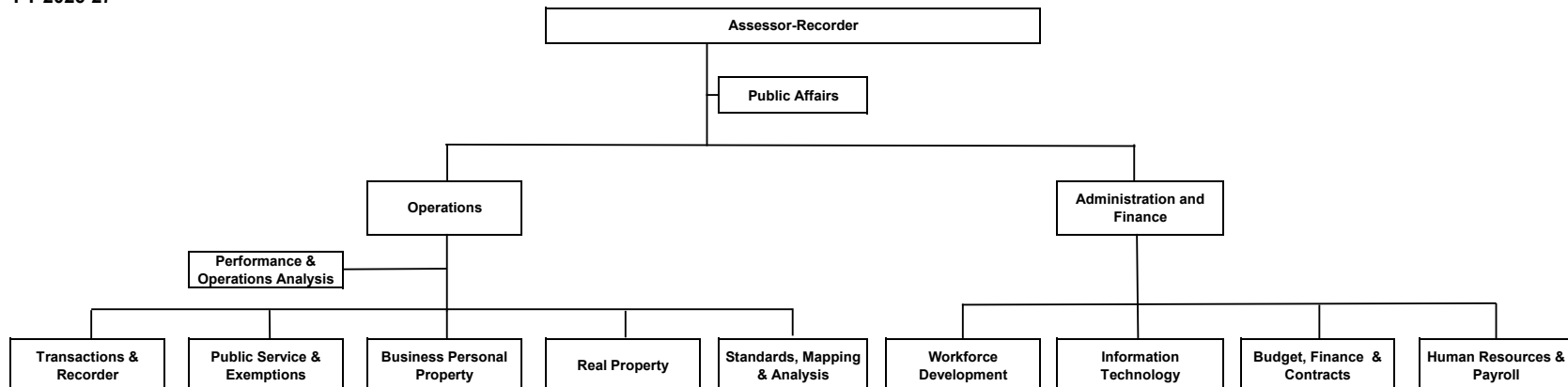
[illegible]

Office of the Assessor-Recorder  
Organizational Chart  
FY 2025-26 and FY 2026-27

FY 2025-26

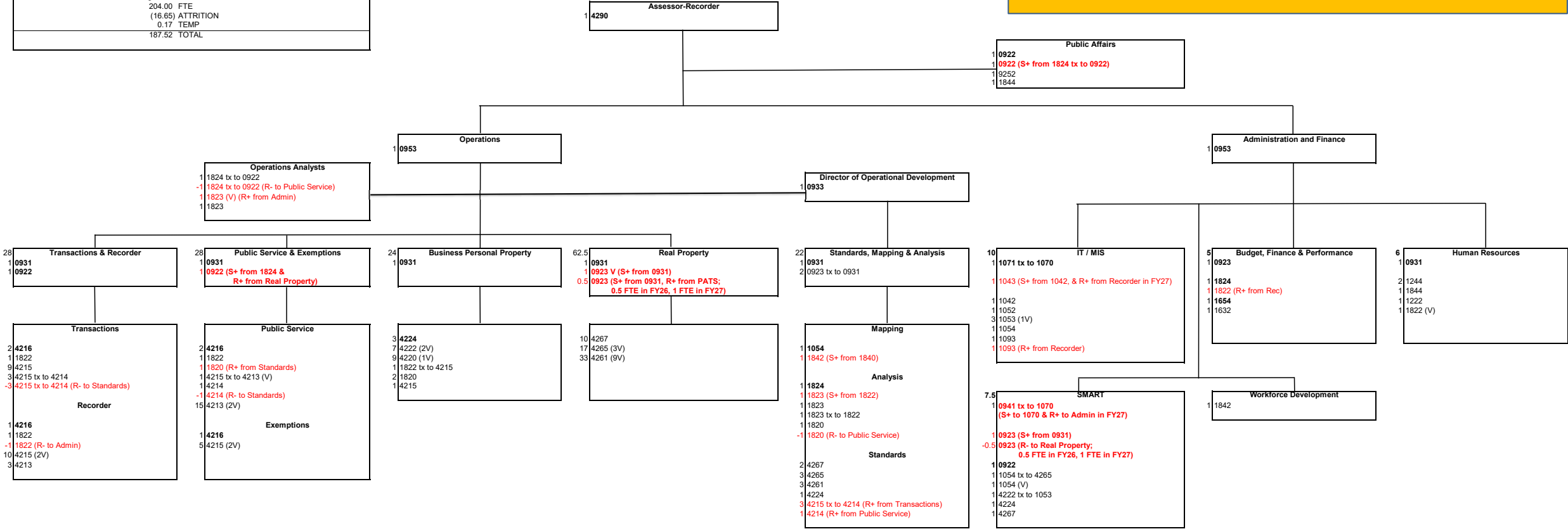


FY 2026-27



Office of the Assessor-Recorder	
Effective:	July 1, 2025
Updated:	February 18, 2025
FY25-26 Budget:	204.00 FTE
	(16.65) ATTRITION
	0.17 TEMP
	187.52 TOTAL

FY 26 & FY 27 PROPOSED BUDGET POSITION SUMMARY



Legend
V - Vacant
TX - Temporary exchange to another job class
R+/- - Reassignment
S+/- - Substitution
D - Position deletion
Red - included in proposed budget