

NO.	DATE	REVISION DESCRIPTION
1	07/12/2024	PACKAGE 07 - 100% SCHEMATIC DESIGN
2	09/27/2024	PACKAGE 07 - 50% DESIGN DEVELOPMENT
3	12/13/2024	PACKAGE 07 - 100% DESIGN DEVELOPMENT
4	08/15/2025	PACKAGE 07 - 100% DESIGN DEVELOPMENT
5	08/15/2025	PACKAGE 7B - ISSUE FOR PERMIT
6	03/09/2026	PACKAGE 7B - ISSUE FOR PERMIT
7	06/24/2026	PACKAGE 7B - BULLETIN 2

**Turner**  
 100 Pringle Ave, Suite 340  
 Walnut Creek, CA 94596  
 415-509-4229

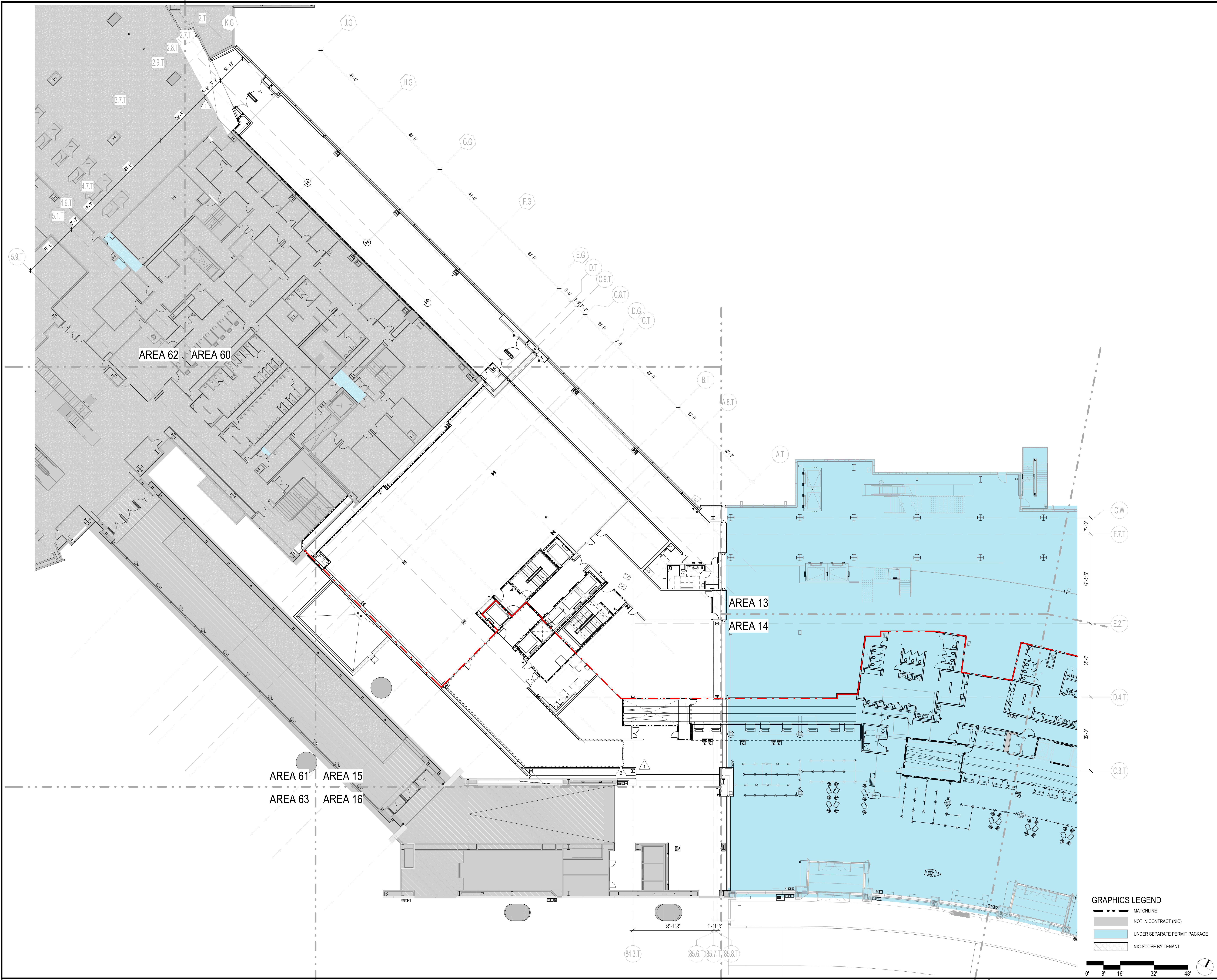
**Gensler**  
 220 Montgomery Street, Suite 200  
 San Francisco, CA 94104  
 415-433-3700

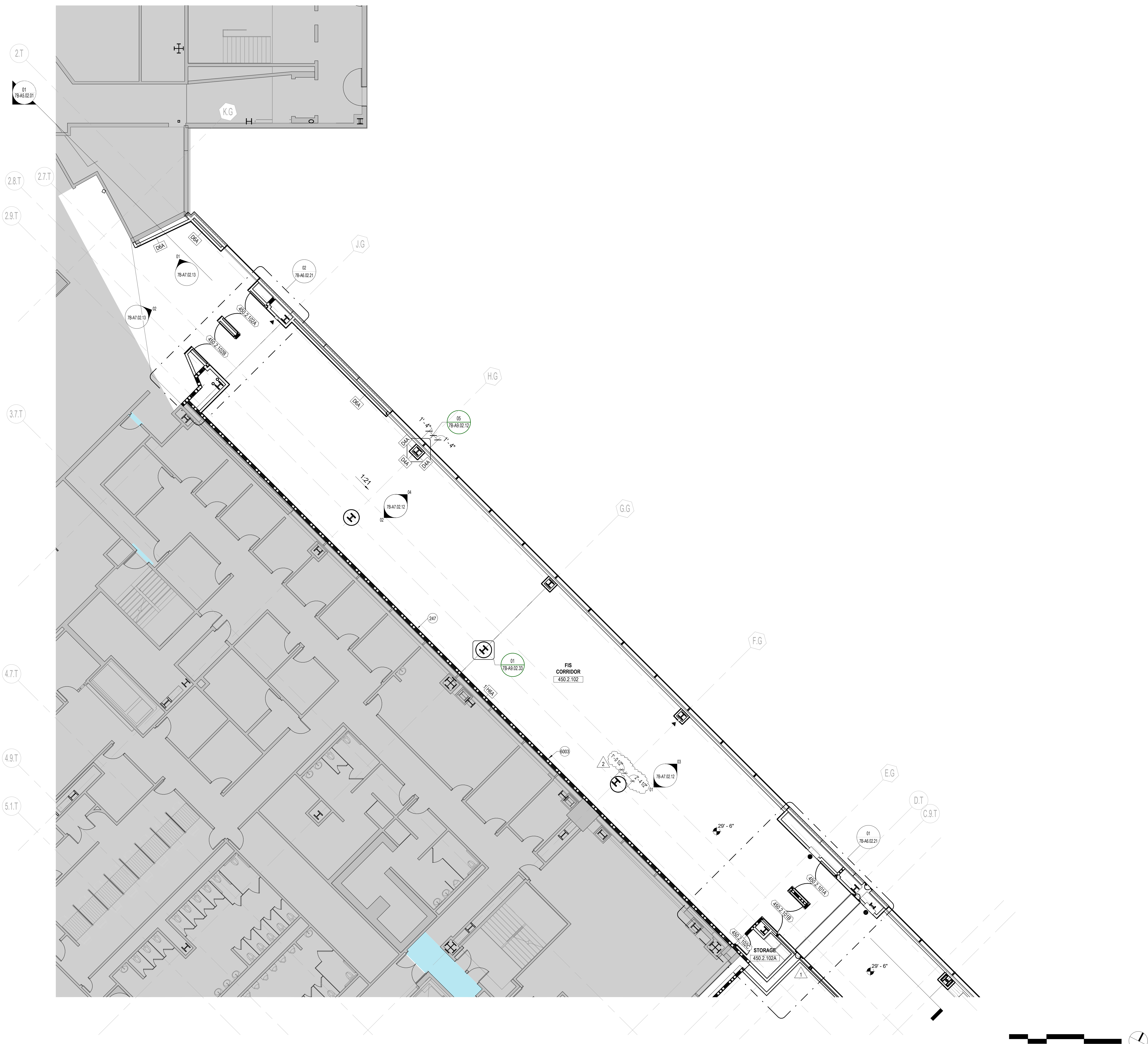
**TEF**  
 1420 Sutter Street  
 San Francisco, CA 94109  
 415-381-7918

CONTRACT NO.	10071.76_400
PROJECT TITLE	TERMINAL 3 WEST MODERNIZATION
SHEET TITLE	PACKAGE 7B - C4C
CONSTRUCTION PLAN - LEVEL 2 - OVERALL	

APPROVED:	
APPROVED:	
DESIGNED BY:	CHECKED BY:
DRAWN BY:	DATE:
SCALE:	SIZE:
SHEET NUMBER:	ARCH-E1

7B-A2.L2.00





**SHEET NOTES**

- 247 ART LOCATION TO BE PROVIDED BY SFO MUSEUM. PROVIDE BACKING AS REQUIRED FOR ARTWORK
- 6003 APPLY OPAQUE FILM TO EXISTING CBP WINDOWS BLOCKED BY C4C CONNECTOR

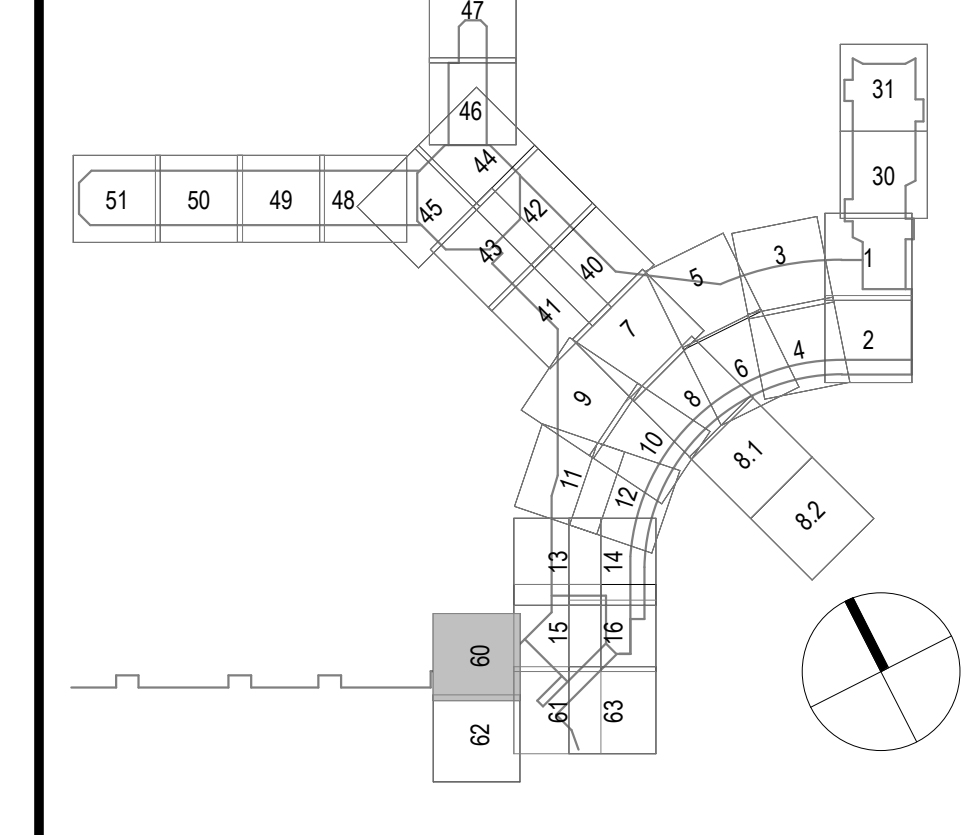
**GENERAL NOTES**

1. SEE CIVIL, STRUCTURAL, MECHANICAL, ELECTRICAL, PLUMBING, AV, TELECOM, SECURITY, LIGHTING & PASSENGER BOARDING BRIDGES, BAGGAGE HANDLING SYSTEM, AND FIRE PROTECTION FOR ADDITIONAL WORK.
2. ALL PARTITIONS TO BE A6A, UNO.
3. SEE A9 SERIES SHEETS FOR PARTITION, BLOCKING, AND BACKING INFORMATION AND FOR COLUMN COVER DETAILS.
4. SEE A0 SERIES DRAWINGS, DOOR SCHEDULE, AND SPECIFICATIONS FOR DOOR INFORMATION.
5. SEE A4 AND A7 SERIES DRAWINGS FOR FINISH INFORMATION.
6. WHERE EXISTING ITEMS ARE REMOVED IN EXISTING SURFACES, PATCH EXISTING SURFACES TO MATCH EXISTING ADJACENT FINISHES.
7. MAINTAIN FIRE RATED ASSEMBLIES AT PENETRATIONS.
8. MAINTAIN BUILDING ENVELOPE WATERPROOFING AT PENETRATIONS.
9. MAINTAIN ACOUSTIC SEPARATION AT PENETRATIONS.
10. SEE S0 SERIES GRAPHIC DRAWINGS FOR SIGNAGE REQUIREMENTS AND SIGNAGE SUPPORTS.
11. SEE A5 SERIES SHEETS FOR BUILDING EXTERIOR ENVELOPE WORK.
12. SEE A0 SERIES SHEETS FOR FIRE AND LIFE SAFETY INFORMATION.
13. SEE A0 & S0 SERIES FOR PROJECT GENERAL NOTES, TYP COLUMN GRID LINES, AND PROJECT FLOOR ELEVATIONS.
14. PROTECT (E) ADJACENT REMAINING AREAS DURING CONSTRUCTION.
15. SEE A9 SERIES SHEETS FOR COLUMN COVER INFORMATION.
16. SEE A4 AND A8 SERIES SHEETS FOR GLAZING INFORMATION.
17. DIMENSIONS LOCATING RECESSED WALL-MTD. CABINETS SUCH AS FEC, AED, AND FVC SHALL INCLUDE A TOLERANCE OF +/- 3".
18. SEE BAGGAGE HANDLING SYSTEM DRAWINGS FOR ALL BHS RELATED EQUIPMENT, STAIRS, FENCING, AND PLATFORMS. ALL BHS ELEMENTS AND BAG-DROPS SHOWN ARE FOR REFERENCE ONLY.
19. FOR PENTHOUSE EXTERIOR WALL TYPES SEE SHEET A5.01.04.

**GRAPHICS LEGEND**

	AIRLAND SIDE LIMIT		CABINET
	MATCHLINE		FIRE EXTINGUISHER AED
	OVERHEAD LINE		FIRE VALVE CABINET
	EXISTING TO REMAIN		FIRE EXTINGUISHER ON HOOK
	NON-RATED ASSEMBLY		SYMBOL LOCATION DESIGNATES ACCESSIBLE SIDE
	1 HOUR-RATED ASSEMBLY		HYDRANT
	2 HOUR-RATED ASSEMBLY		SHAFT
	3 HOUR-RATED ASSEMBLY		DOOR
	(E) (NIC) 1 HOUR-RATED ASSEMBLY GC TO VERIFY IN FIELD		FALL PROTECTION ANCHORS
	(E) (NIC) 2 HOUR-RATED ASSEMBLY GC TO VERIFY IN FIELD		MAINTENANCE ACCESS PATHWAY
	NOT IN CONTRACT		PRIMARY & SECONDARY DRAIN SYSTEM
	NIC TENANT AREA		
	UNDER SEPARATE PERMIT PKG		
	MILLWORK		
	SAFETY STRIPING		
	COPING AT PARAPET CAP		
	DELUGE FACADE PROTECTION		
	BUILDING MAINTENANCE ZONE		
	PROPOSED PV ARRAY AREAS LOCATIONS		
	COLUMN COVER TAG SYMBOL		
	PARTITION TAG SYMBOL		

**KEY PLAN**



NO.	DATE	REVISION DESCRIPTION
1	07/12/2024	PACKAGE 07 - 100% SCHEMATIC DESIGN
2	09/27/2024	PACKAGE 07 - 50% DESIGN DEVELOPMENT
3	12/13/2024	PACKAGE 07 - 100% DESIGN DEVELOPMENT
4	08/15/2025	PACKAGE 07 - 100% DESIGN DEVELOPMENT
5	08/15/2025	PACKAGE 07 - 100% DESIGN DEVELOPMENT
6	08/15/2025	PACKAGE 07 - 100% DESIGN DEVELOPMENT
7	08/15/2025	PACKAGE 07 - 100% DESIGN DEVELOPMENT
8	08/15/2025	PACKAGE 07 - 100% DESIGN DEVELOPMENT
9	08/15/2025	PACKAGE 07 - 100% DESIGN DEVELOPMENT
10	08/15/2025	PACKAGE 07 - 100% DESIGN DEVELOPMENT
11	08/15/2025	PACKAGE 07 - 100% DESIGN DEVELOPMENT
12	08/15/2025	PACKAGE 07 - 100% DESIGN DEVELOPMENT
13	08/15/2025	PACKAGE 07 - 100% DESIGN DEVELOPMENT
14	08/15/2025	PACKAGE 07 - 100% DESIGN DEVELOPMENT
15	08/15/2025	PACKAGE 07 - 100% DESIGN DEVELOPMENT
16	08/15/2025	PACKAGE 07 - 100% DESIGN DEVELOPMENT
17	08/15/2025	PACKAGE 07 - 100% DESIGN DEVELOPMENT
18	08/15/2025	PACKAGE 07 - 100% DESIGN DEVELOPMENT
19	08/15/2025	PACKAGE 07 - 100% DESIGN DEVELOPMENT
20	08/15/2025	PACKAGE 07 - 100% DESIGN DEVELOPMENT
21	08/15/2025	PACKAGE 07 - 100% DESIGN DEVELOPMENT
22	08/15/2025	PACKAGE 07 - 100% DESIGN DEVELOPMENT
23	08/15/2025	PACKAGE 07 - 100% DESIGN DEVELOPMENT
24	08/15/2025	PACKAGE 07 - 100% DESIGN DEVELOPMENT
25	08/15/2025	PACKAGE 07 - 100% DESIGN DEVELOPMENT
26	08/15/2025	PACKAGE 07 - 100% DESIGN DEVELOPMENT
27	08/15/2025	PACKAGE 07 - 100% DESIGN DEVELOPMENT
28	08/15/2025	PACKAGE 07 - 100% DESIGN DEVELOPMENT
29	08/15/2025	PACKAGE 07 - 100% DESIGN DEVELOPMENT
30	08/15/2025	PACKAGE 07 - 100% DESIGN DEVELOPMENT
31	08/15/2025	PACKAGE 07 - 100% DESIGN DEVELOPMENT
32	08/15/2025	PACKAGE 07 - 100% DESIGN DEVELOPMENT
33	08/15/2025	PACKAGE 07 - 100% DESIGN DEVELOPMENT
34	08/15/2025	PACKAGE 07 - 100% DESIGN DEVELOPMENT
35	08/15/2025	PACKAGE 07 - 100% DESIGN DEVELOPMENT
36	08/15/2025	PACKAGE 07 - 100% DESIGN DEVELOPMENT
37	08/15/2025	PACKAGE 07 - 100% DESIGN DEVELOPMENT
38	08/15/2025	PACKAGE 07 - 100% DESIGN DEVELOPMENT
39	08/15/2025	PACKAGE 07 - 100% DESIGN DEVELOPMENT
40	08/15/2025	PACKAGE 07 - 100% DESIGN DEVELOPMENT
41	08/15/2025	PACKAGE 07 - 100% DESIGN DEVELOPMENT
42	08/15/2025	PACKAGE 07 - 100% DESIGN DEVELOPMENT
43	08/15/2025	PACKAGE 07 - 100% DESIGN DEVELOPMENT
44	08/15/2025	PACKAGE 07 - 100% DESIGN DEVELOPMENT
45	08/15/2025	PACKAGE 07 - 100% DESIGN DEVELOPMENT
46	08/15/2025	PACKAGE 07 - 100% DESIGN DEVELOPMENT
47	08/15/2025	PACKAGE 07 - 100% DESIGN DEVELOPMENT
48	08/15/2025	PACKAGE 07 - 100% DESIGN DEVELOPMENT
49	08/15/2025	PACKAGE 07 - 100% DESIGN DEVELOPMENT
50	08/15/2025	PACKAGE 07 - 100% DESIGN DEVELOPMENT
51	08/15/2025	PACKAGE 07 - 100% DESIGN DEVELOPMENT
52	08/15/2025	PACKAGE 07 - 100% DESIGN DEVELOPMENT
53	08/15/2025	PACKAGE 07 - 100% DESIGN DEVELOPMENT
54	08/15/2025	PACKAGE 07 - 100% DESIGN DEVELOPMENT
55	08/15/2025	PACKAGE 07 - 100% DESIGN DEVELOPMENT
56	08/15/2025	PACKAGE 07 - 100% DESIGN DEVELOPMENT
57	08/15/2025	PACKAGE 07 - 100% DESIGN DEVELOPMENT
58	08/15/2025	PACKAGE 07 - 100% DESIGN DEVELOPMENT
59	08/15/2025	PACKAGE 07 - 100% DESIGN DEVELOPMENT
60	08/15/2025	PACKAGE 07 - 100% DESIGN DEVELOPMENT
61	08/15/2025	PACKAGE 07 - 100% DESIGN DEVELOPMENT
62	08/15/2025	PACKAGE 07 - 100% DESIGN DEVELOPMENT
63	08/15/2025	PACKAGE 07 - 100% DESIGN DEVELOPMENT
64	08/15/2025	PACKAGE 07 - 100% DESIGN DEVELOPMENT
65	08/15/2025	PACKAGE 07 - 100% DESIGN DEVELOPMENT
66	08/15/2025	PACKAGE 07 - 100% DESIGN DEVELOPMENT
67	08/15/2025	PACKAGE 07 - 100% DESIGN DEVELOPMENT
68	08/15/2025	PACKAGE 07 - 100% DESIGN DEVELOPMENT
69	08/15/2025	PACKAGE 07 - 100% DESIGN DEVELOPMENT
70	08/15/2025	PACKAGE 07 - 100% DESIGN DEVELOPMENT
71	08/15/2025	PACKAGE 07 - 100% DESIGN DEVELOPMENT
72	08/15/2025	PACKAGE 07 - 100% DESIGN DEVELOPMENT
73	08/15/2025	PACKAGE 07 - 100% DESIGN DEVELOPMENT
74	08/15/2025	PACKAGE 07 - 100% DESIGN DEVELOPMENT
75	08/15/2025	PACKAGE 07 - 100% DESIGN DEVELOPMENT
76	08/15/2025	PACKAGE 07 - 100% DESIGN DEVELOPMENT
77	08/15/2025	PACKAGE 07 - 100% DESIGN DEVELOPMENT
78	08/15/2025	PACKAGE 07 - 100% DESIGN DEVELOPMENT
79	08/15/2025	PACKAGE 07 - 100% DESIGN DEVELOPMENT
80	08/15/2025	PACKAGE 07 - 100% DESIGN DEVELOPMENT
81	08/15/2025	PACKAGE 07 - 100% DESIGN DEVELOPMENT
82	08/15/2025	PACKAGE 07 - 100% DESIGN DEVELOPMENT
83	08/15/2025	PACKAGE 07 - 100% DESIGN DEVELOPMENT
84	08/15/2025	PACKAGE 07 - 100% DESIGN DEVELOPMENT
85	08/15/2025	PACKAGE 07 - 100% DESIGN DEVELOPMENT
86	08/15/2025	PACKAGE 07 - 100% DESIGN DEVELOPMENT
87	08/15/2025	PACKAGE 07 - 100% DESIGN DEVELOPMENT
88	08/15/2025	PACKAGE 07 - 100% DESIGN DEVELOPMENT
89	08/15/2025	PACKAGE 07 - 100% DESIGN DEVELOPMENT
90	08/15/2025	PACKAGE 07 - 100% DESIGN DEVELOPMENT
91	08/15/2025	PACKAGE 07 - 100% DESIGN DEVELOPMENT
92	08/15/2025	PACKAGE 07 - 100% DESIGN DEVELOPMENT
93	08/15/2025	PACKAGE 07 - 100% DESIGN DEVELOPMENT
94	08/15/2025	PACKAGE 07 - 100% DESIGN DEVELOPMENT
95	08/15/2025	PACKAGE 07 - 100% DESIGN DEVELOPMENT
96	08/15/2025	PACKAGE 07 - 100% DESIGN DEVELOPMENT
97	08/15/2025	PACKAGE 07 - 100% DESIGN DEVELOPMENT
98	08/15/2025	PACKAGE 07 - 100% DESIGN DEVELOPMENT
99	08/15/2025	PACKAGE 07 - 100% DESIGN DEVELOPMENT
100	08/15/2025	PACKAGE 07 - 100% DESIGN DEVELOPMENT

**Turner**  
100 Pringle Ave, Suite 340  
Walnut Creek, CA 94596  
415-509-4229

**Gensler**  
220 Montgomery Street, Suite 200  
San Francisco, CA 94104  
415-433-3700

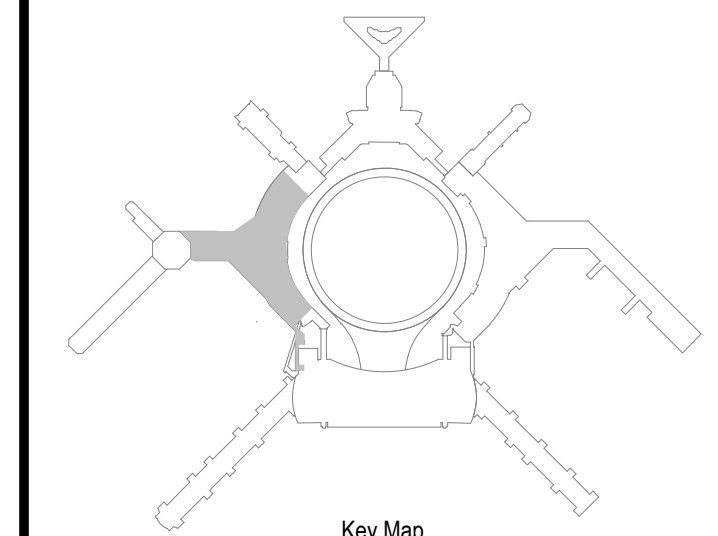
**TEF**  
1420 Sutter Street  
San Francisco, CA 94109  
415-381-7918

CONTRACT NO.	10071.76_400
PROJECT TITLE	TERMINAL 3 WEST MODERNIZATION
SHEET TITLE	CONSTRUCTION PLAN - LEVEL 2 - AREA 60
PACKAGE	PACKAGE 7B - C4C



APPROVED:	
APPROVED:	
DESIGNED BY:	CHECKED BY:
DRAWN BY:	DATE:
SCALE:	SIZE:
SHEET NUMBER:	ARCH-E1

**7B-A2.L2.60**



NO.	DATE	REVISION DESCRIPTION
	07/12/2024	PACKAGE 07 - 100% SCHEMATIC DESIGN
	09/27/2024	PACKAGE 07 - 50% DESIGN DEVELOPMENT
	12/13/2024	PACKAGE 13 - 100% DESIGN DEVELOPMENT
	01/15/2025	PACKAGE 14 - 100% DESIGN DEVELOPMENT
	08/15/2025	BICE PACKAGE 7B - ISSUE FOR PERMIT

**Turner**  
 100 Pringle Ave, Suite 340  
 Walnut Creek, CA 94596  
 415-509-4229

**Gensler**  
 220 Montgomery Street, Suite 200  
 San Francisco, CA 94104  
 415-433-3700

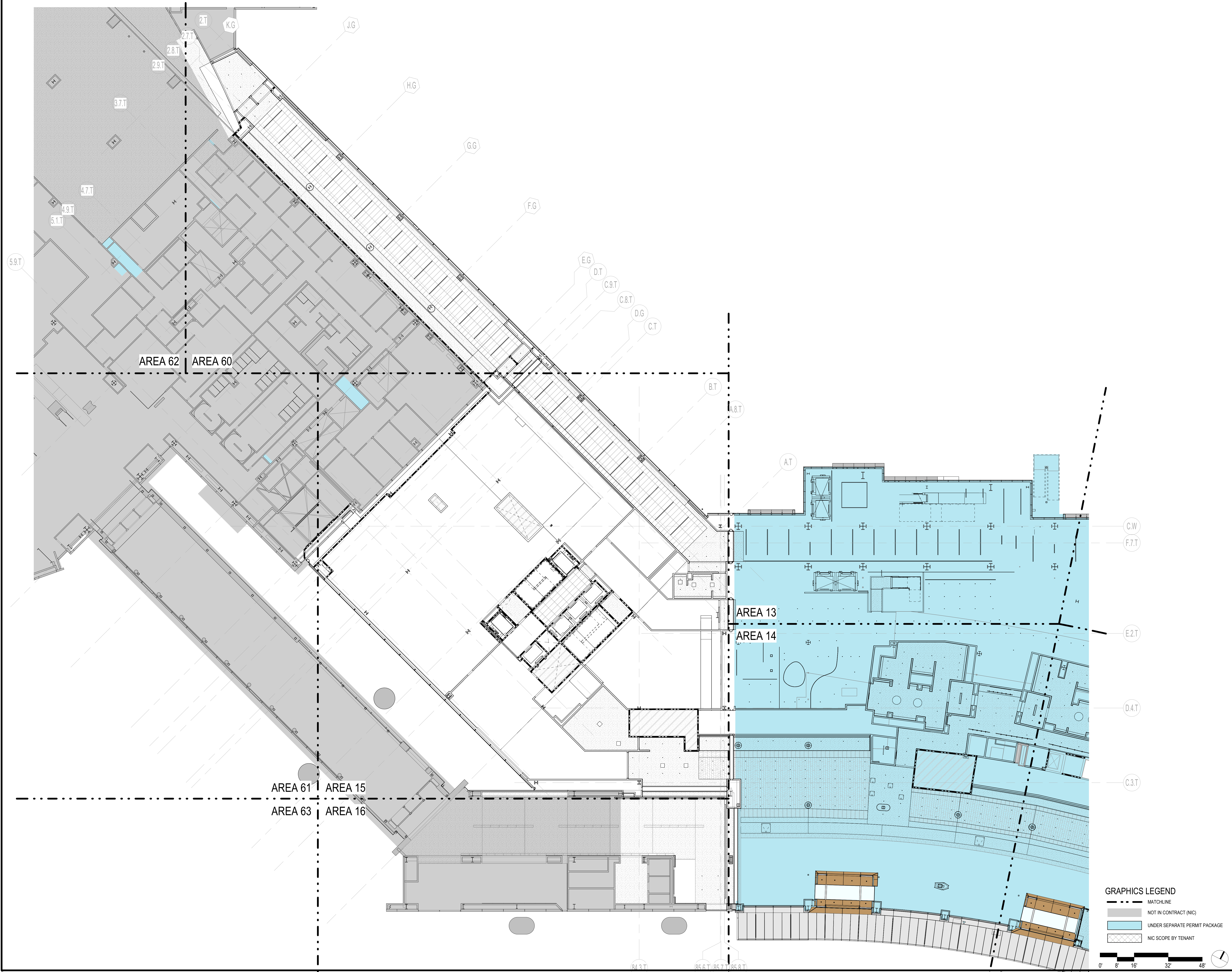
**TEF**  
 1420 Sutter Street  
 San Francisco, CA 94109  
 415-381-7918

CONTRACT NO.	10071.76_400
PROJECT TITLE	TERMINAL 3 WEST MODERNIZATION
SHEET TITLE	PACKAGE 7B - C4C REFLECTED CEILING PLAN - LEVEL 2 - OVERALL

**PROGRESS**

APPROVED:	
APPROVED:	
DESIGNED BY:	CHECKED BY:
DRAWN BY:	DATE:
SCALE:	03/09/2026
AS NOTED	SIZE
SHEET NUMBER	ARCH-E1

**7B-A3.L2.00**





**SHEET NOTES**

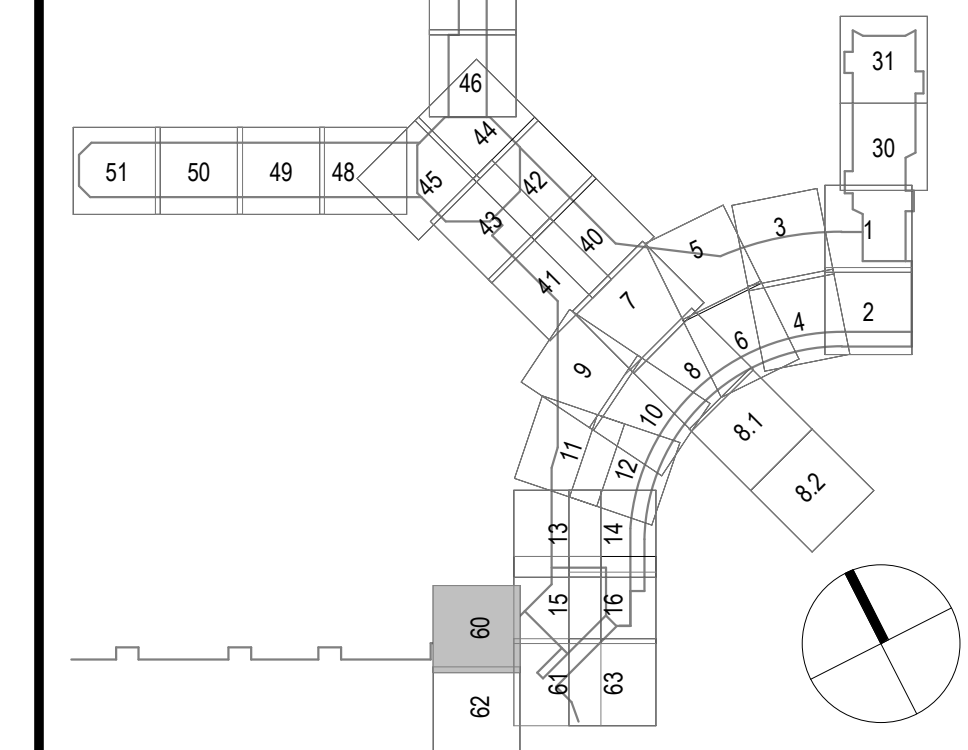
**GENERAL NOTES**

- WHERE NO CEILING FINISH IS CALLED OUT ON THE RCP, NO CEILING FINISH IS REQUIRED, U.N.O.
- SEE ELECTRICAL DRAWINGS FOR LIGHT FIXTURE SCHEDULE, EXT LIGHTS AND OTHER LIFE SAFETY DEVICES.
- SEE MEP DRAWINGS FOR DESIGN OF MECHANICAL AND ELECTRICAL SYSTEMS. ARCHITECTURAL PLANS GOVERN FOR LOCATION OF ITEMS INSTALLED IN CEILING. NOTIFY ARCHITECT IF CONFLICTS OCCUR.
- INSTALL REGISTERS AND LIGHT FIXTURES WITHIN GRID LINES. INSTALL SPEAKERS, LIGHT FIXTURES, AND OTHER CEILING ELEMENTS IN THE GEOMETRIC CENTER OF ACOUSTICAL UNITS OR CEILING PANELS, U.N.O.
- ARRANGE ABOVE THE CEILING ITEMS TO PROVIDE ADEQUATE CLEARANCES FOR CEILING AND ITS DEVICES.
- VERIFY ACCESS PANEL LOCATIONS WITH ARCHITECT PRIOR TO LAYOUT OF WORK REQUIRING ACCESS.
- PLUMB ALL STEM, AIRCRAFT CABLE, AND APPURTENANCES USED TO SUPPORT SUSPENDED LIGHT FIXTURES, U.N.O.
- LOCATE ALL HEADS TO ALIGN WITH LIGHT FIXTURES, U.N.O.
- PROVIDE SPRINKLER HEAD LOCATIONS FOR ARCHITECT'S REVIEW PRIOR TO ANY INSTALLATION. IF IT IS NOT POSSIBLE TO LOCATE HEADS AS REQUIRED FOR ANY REASON, INCLUDING, CODE REQUIREMENTS, DO NOT PROCEED WITH WORK UNTIL SUCH CONDITIONS HAVE BEEN REVIEWED WITH ARCHITECT.
- PROVIDE CONCEALED SPRINKLER HEADS WITH CAPS WHICH ARE FACTORY PAINTED TO MATCH THE CEILING IN DRYWALL AND ACT CEILINGS.
- NO COMBUSTIBLE MATERIALS ALLOWED IN CEILING PLENUM.
- G.C. TO CONFIRM WITH ARCHITECT ON ALL SPEAKER LOCATIONS PRIOR TO INSTALLATION.
- PAINT ALL SURFACES BLACK THAT ARE VISIBLE THROUGH RETURN AIR GRILLES OR CEILING OPENINGS GREATER THAN 3".
- SEE FINISH SCHEDULE FOR CEILING FINISHES.
- SEE SHEET 60 SERIES FOR TYPICAL CEILING DETAILS.
- ALL AREAS TO BE SPRINKLERED PER NFPA 13. REFER TO FIRE PROTECTION DRAWINGS FOR ABOVE-CEILING SPRINKLER COVERAGE.
- ALL MECHANICAL DUCT PENETRATIONS THROUGH RATED ASSEMBLIES TO HAVE FIRE SMOKE DAMPER, TYP.
- CEILING HEIGHTS AND SPOT ELEVATIONS, INCLUDING CEILINGS AT RESTROOMS WITH DEPRESSED SLABS, ARE MEASURED FROM TOC OF THE PRIMARY LEVEL INDICATED BY THE SHEET SERIES, U.N.O. (FROM NAVD88 0+07.81 = 2'-10"; L1 = +11'-0"; L2 = +27'-2"; L2M = +42'-8"; R2 = +61'-2").
- CEILING DEVICE COLOR TO MATCH CEILING COLOR IN PUBLIC-FACING AREAS. CONFIRM CUSTOM COLOR WITH ARCHITECT BEFORE PROCUREMENT.
- MEP DEVICES AND FIXTURES SHOWN FOR REFERENCE ONLY. SEE PACKAGES 5B AND 6 MEP DRAWINGS FOR ADDITIONAL INFORMATION.

**GRAPHICS LEGEND** SEE SHEET A0.01.01 FOR ADDITIONAL SYMBOLS, INCLUDING LIGHTING FIXTURES

- MATCHLINE
- PROJECT LIMIT LINE
- EXISTING TO REMAIN
- NON-RATED ASSEMBLY
- 1 HOUR RATED ASSEMBLY
- 2 HOUR RATED ASSEMBLY
- NOT IN CONTRACT (NIC)
- NIC TENANT AREA
- ISSUED UNDER SEPARATE PERMIT PACKAGE
- RESTRICTED ZONE - NO ATTACHMENTS /PENETRATIONS
- SUSPENDED ACOUSTIC PANEL CEILING
- SEISMIC SEPARATION JOINT AT APC
- CEILING TYPE
- CEILING HEIGHT
- WHERE SHOWN, CEILING HEIGHT LEVEL REFERENCE (T.O. CONC.) DIFFERS FROM TYPICAL REFERENCE LEVEL NOTED ON SHEET:
- Δ1 = T3W L1 ARRIVALS TOC; NAVD88 +10'-3"
- Δ2 = T3 L1 ARRIVALS TOC; NAVD88 +10'-4 3/4"
- Δ3 - NOT USED
- Δ4 = T3W L2M FIS MEZZANINE TOC; NAVD88 +45'-2"
- EXIT SIGNAGE, S.E.D.
- FIRE ALARM STROBE, S.E.D.
- FIRE ALARM SPEAKER, S.E.D.
- SENSOR DEVICE, S.E.D.
- LIGHT FIXTURE W/ TAG, S.E.D.
- MECH AIR REGISTER, S.M.D.
- SPRINKLER PENDANT, S.F.P.D.
- SPRINKLER UPRIGHT, S.F.P.D.
- SPEAKER, S.E.D.
- XOVIS (AT SSCP), S.E.D.
- WAP, S.E.D.
- ERRCS, S.E.D.
- CAMERA, S.E.D.
- DAS DEVICE S.E.D.
- GYP BOARD CEILING
- NO CEILING
- INSULATION, SPRAY-ON

**KEY PLAN**



**SFO**  
San Francisco International Airport

Key Map

NO.	DATE	REVISION DESCRIPTION
1	03/08/2025	PACKAGE 07 - 50% DESIGN DEVELOPMENT
2	04/25/2025	PACKAGE 7B - 100% DESIGN DEVELOPMENT
3	04/25/2025	PACKAGE 7B - 50% CONSTRUCTION DOCUMENT
4	03/08/2025	PERMIT PACKAGE 7B - BULLETIN 1

**Turner**  
100 Pringle Ave, Suite 340  
Walnut Creek, CA 94596  
415-509-4229

**Gensler**  
220 Montgomery Street, Suite 200  
San Francisco, CA 94104  
415-433-3700

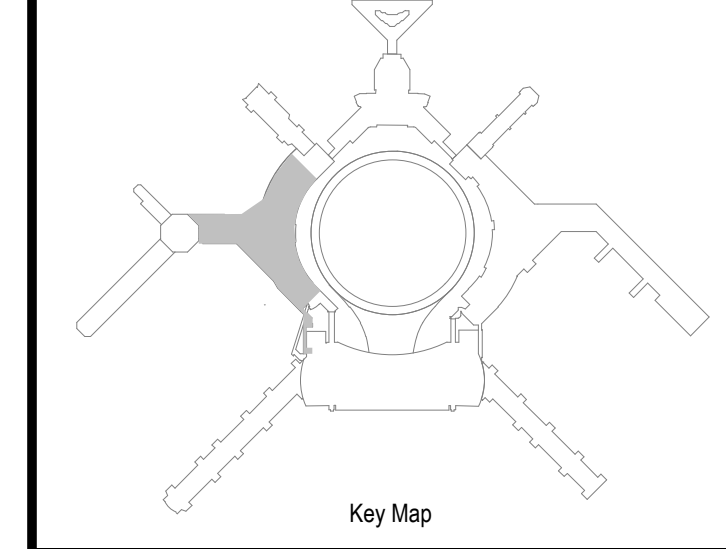
**TEF**  
1420 Sutter Street  
San Francisco, CA 94109  
415-391-7918

CONTRACT NO.	10071.76_400
PROJECT TITLE	TERMINAL 3 WEST MODERNIZATION
SHEET TITLE	PACKAGE 7B - C4C REFLECTED CEILING PLAN - LEVEL 2 - AREA 60

**PROGRESS**

APPROVED:	
APPROVED:	
DESIGNED BY:	CHECKED BY:
DRAWN BY:	DATE:
SCALE:	SIZE:
SHEET NUMBER:	ARCH-E1

**7B-A3.L2.60**



NO.	DATE	REVISION DESCRIPTION
1	05/27/2024	PACKAGE 07 - 50% DESIGN DEVELOPMENT
2	11/23/2024	PACKAGE 7B - 100% DESIGN DEVELOPMENT
3	06/25/2025	PACKAGE 7B - 50% CONSTRUCTION DOCUMENT
4	08/26/2025	PACKAGE 7B - 100% CONSTRUCTION DOCUMENT
5	08/24/2025	BICE PACKAGE 7B - BULLETIN 2

**Turner**  
 100 Pringle Ave, Suite 340  
 Walnut Creek, CA 94596  
 415-509-4229

**Gensler**  
 220 Montgomery Street, Suite 200  
 San Francisco, CA 94104  
 415-433-3700

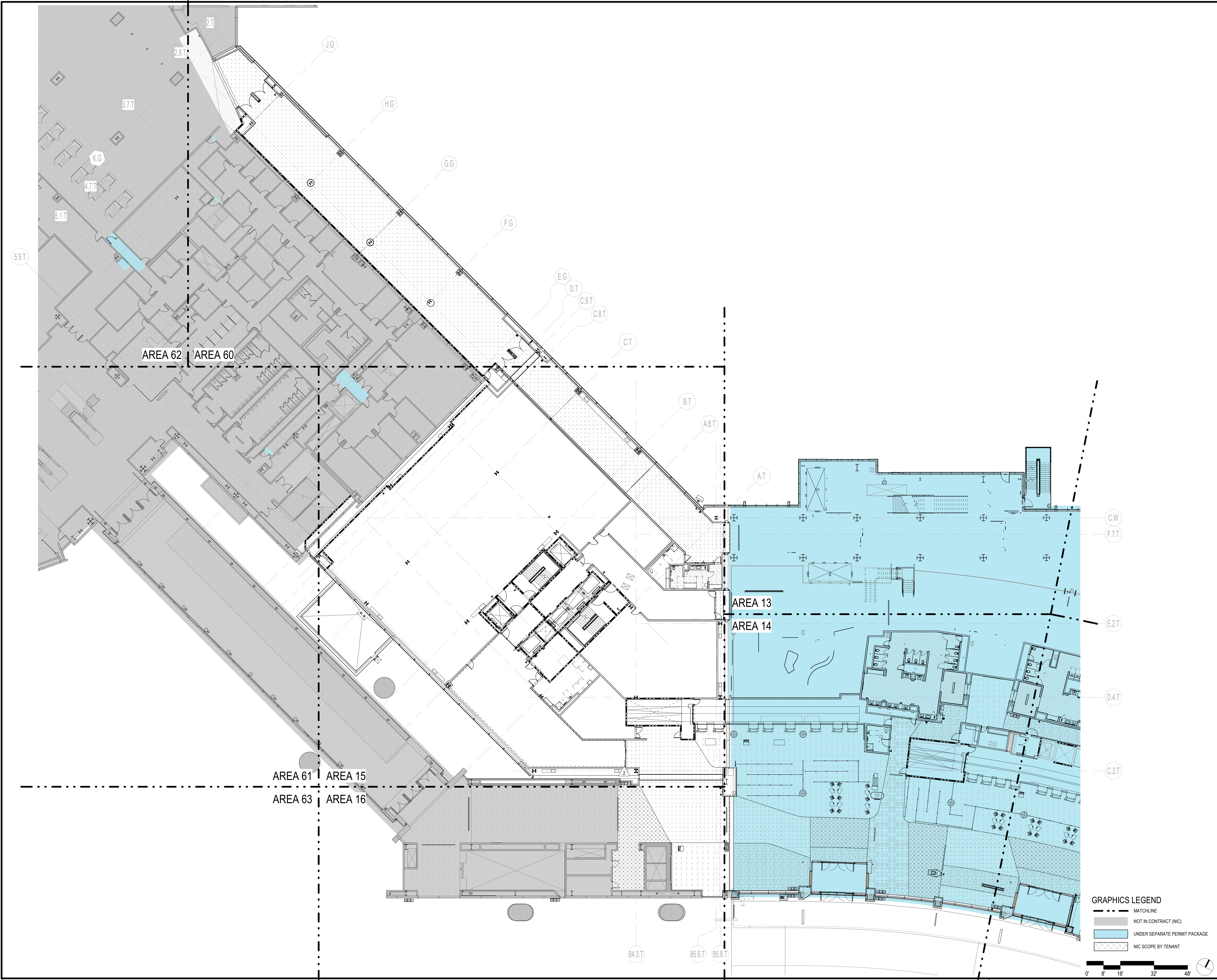
**TEF**  
 1420 Sutter Street  
 San Francisco, CA 94109  
 415-381-7918

CONTRACT NO.	10071.76_400
PROJECT TITLE	TERMINAL 3 WEST MODERNIZATION
SHEET TITLE	PACKAGE 7B - C4C
FINISH FLOOR PLAN - LEVEL 2 - OVERALL	

**PROGRESS**

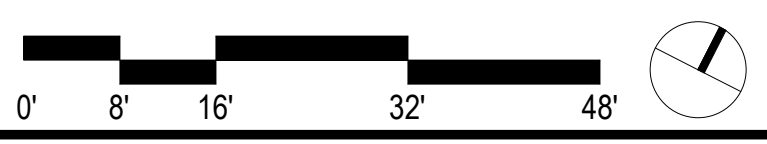
APPROVED: \_\_\_\_\_  
 APPROVED: \_\_\_\_\_  
 DESIGNED BY: \_\_\_\_\_ CHECKED BY: \_\_\_\_\_  
 DRAWN BY: \_\_\_\_\_ DATE: 03/09/2026  
 SCALE: As indicated SIZE: ARCH-E1  
 SHEET NUMBER: \_\_\_\_\_

**7B-A4.L2.00**

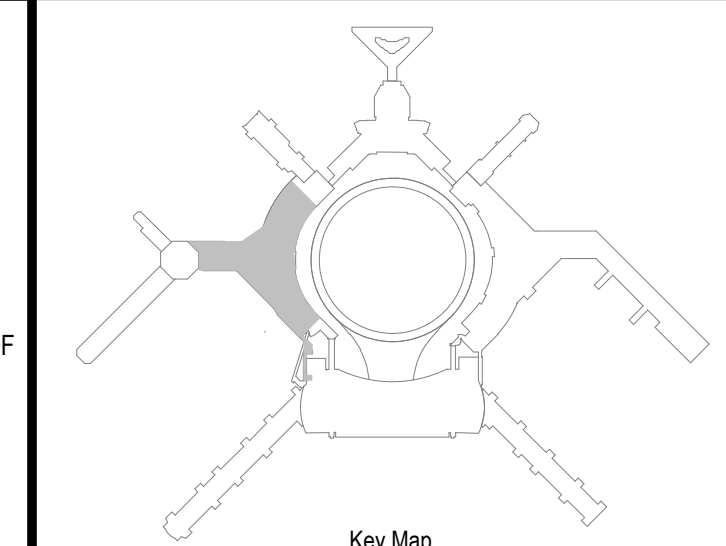


**GRAPHICS LEGEND**

	MATCHLINE
	NOT IN CONTRACT (NIC)
	UNDER SEPARATE PERMIT PACKAGE
	NIC SCOPE BY TENANT



FILE PATH: \\alaska-doss\IT\1091\_SFO\T3W\Modernization\0071.76\_400\_T3W\_ARCH\_SFL\_C4C.rvt



Key Map

GENERAL NOTES

1. SEE A0 & G0 SERIES FOR PROJECT GENERAL NOTES, TYP COLUMN GRID LINES, AND PROJECT FLOOR ELEVATIONS.
2. REFER TO A0 SERIES FOR FINISH SCHEDULE INFORMATION.
3. REFER TO A6 SERIES FOR ENLARGED PLAN FLOOR FINISH INFORMATION.
4. REFER TO A6 AND A7 SERIES FOR WALL FINISH AND DEVICE INFORMATION.
5. PATCH, REPAIR AND CLEAN ALL (E) TO REMAIN FINISHES TO AS-NEW APPEARANCE.
6. ENSURE ALL SURFACES RECEIVING FINISHES ARE CLEAN, TRUE AND FREE OF IRREGULARITIES. DO NOT PROCEED WITH WORK UNTIL UNSATISFACTORY CONDITIONS HAVE BEEN CORRECTED.
7. REFER TO A0 SERIES FOR GENERAL DEVICE MOUNTING LOCATIONS AND LAYOUTS IN FINISHES.
8. REFER TO ELEVATIONS FOR GLAZING AND FILM LOCATIONS.
9. REFER TO A6 SERIES FOR VERTICAL CIRCULATION FINISH INFORMATION.
10. REFER TO ELECTRICAL, POWER AND TELECOMMUNICATION DRAWINGS FOR FURTHER INFORMATION ON POWER AND DATA LOCATIONS TO BE COORDINATED WITH FINISHES.
11. REFER TO VOLUME 4 SG SERIES SHEETS FOR ALL SIGNAGE INFORMATION.
12. EXPANSION JOINTS SHOWN FOR REFERENCE. ALIGN TO GRIDLINES STRAIGHT, RADIAL & ARC'D. SSD FOR GRID LAYOUT. SEE DETAILS FOR EXPANSION AND SEISMIC JOINT PROFILES.
13. ALL FLOOR FINISHES EXTEND UNDER MILLWORK BASE CABINETS, FURNITURE AND EQUIPMENT.
14. HATCHES ARE DIAGRAMMATIC AND INTENDED TO INDICATE DIFFERENT FINISH TYPES ONLY. HATCHES DO NOT REPRESENT PRODUCT INSTALLATION DIRECTION OR LAYOUT.
15. SEE MANUFACTURER'S INSTALLATION DIAGRAMS FOR ALL CARPET TYPES.
16. REFER TO A10 SERIES SHEETS FOR FURNITURE INFORMATION.

NO.	DATE	REVISION/DESCRIPTION
1	03/08/2025	PACKAGE 7B - 50% DESIGN DEVELOPMENT
2	04/25/2025	PACKAGE 7B - 100% DESIGN DEVELOPMENT
3	06/25/2025	PACKAGE 7B - 50% CONSTRUCTION DOCUMENT
4	07/25/2025	PACKAGE 7B - 100% CONSTRUCTION DOCUMENT
5	08/01/2025	PACKAGE 7B - PERMIT
6	08/01/2025	PACKAGE 7B - BULLETIN 1

**Turner**  
 100 Pringle Ave, Suite 340  
 Walnut Creek, CA 94596  
 415-509-4229

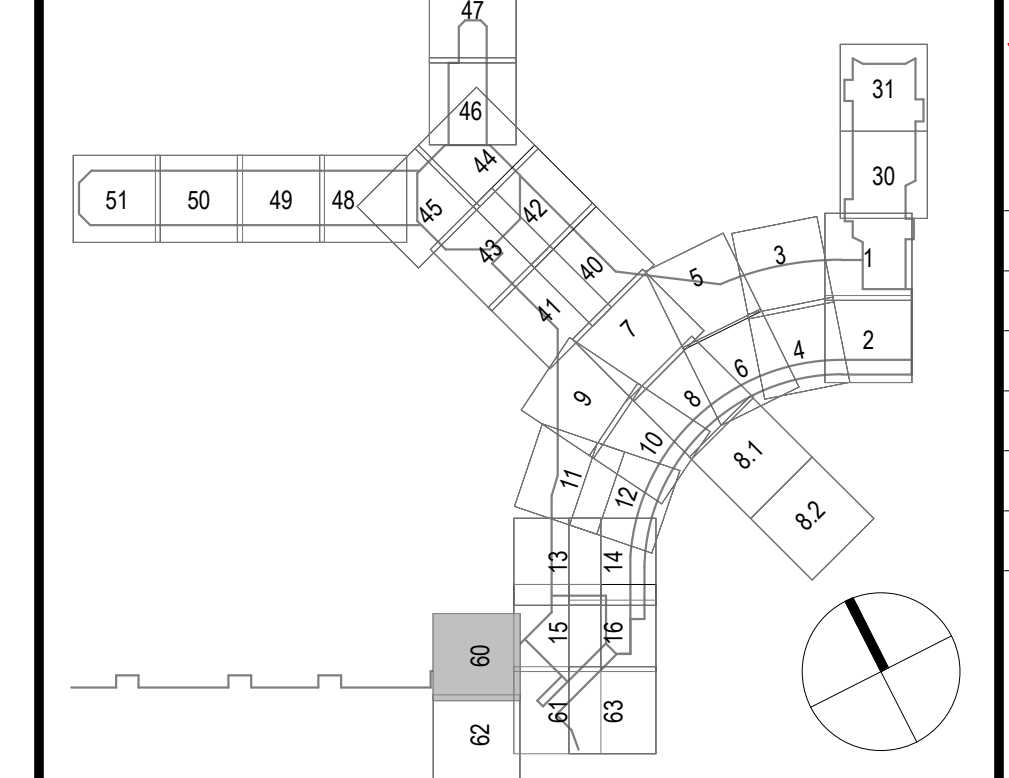
**Gensler**  
 220 Montgomery Street, Suite 200  
 San Francisco, CA 94104  
 415-433-3700

**TEF**  
 1420 Sutter Street  
 San Francisco, CA 94109  
 415-381-7918

GRAPHICS LEGEND

- FLOOR INFILL
- NOT IN CONTRACT
- UNDER SEPARATE PERMIT PKG
- OVERHEAD LINE
- 1/8" ZINC DIVIDER JOINT BETWEEN TERRAZZO COLORS, SEE DETAIL
- 1/16" ZINC CONTROL JOINT, SEE DETAIL
- EXPANSION JOINT, SEE DETAIL, V.I.F. EXISTING JOINTS AND PROVIDE DETAILED LAYOUT FOR APPROVAL PRIOR TO PROCEEDING WITH INSTALLATION. SEE PLAN FOR COLOR MATRIX
- NIC SCOPE BY TENANT
- MILLWORK

KEY PLAN

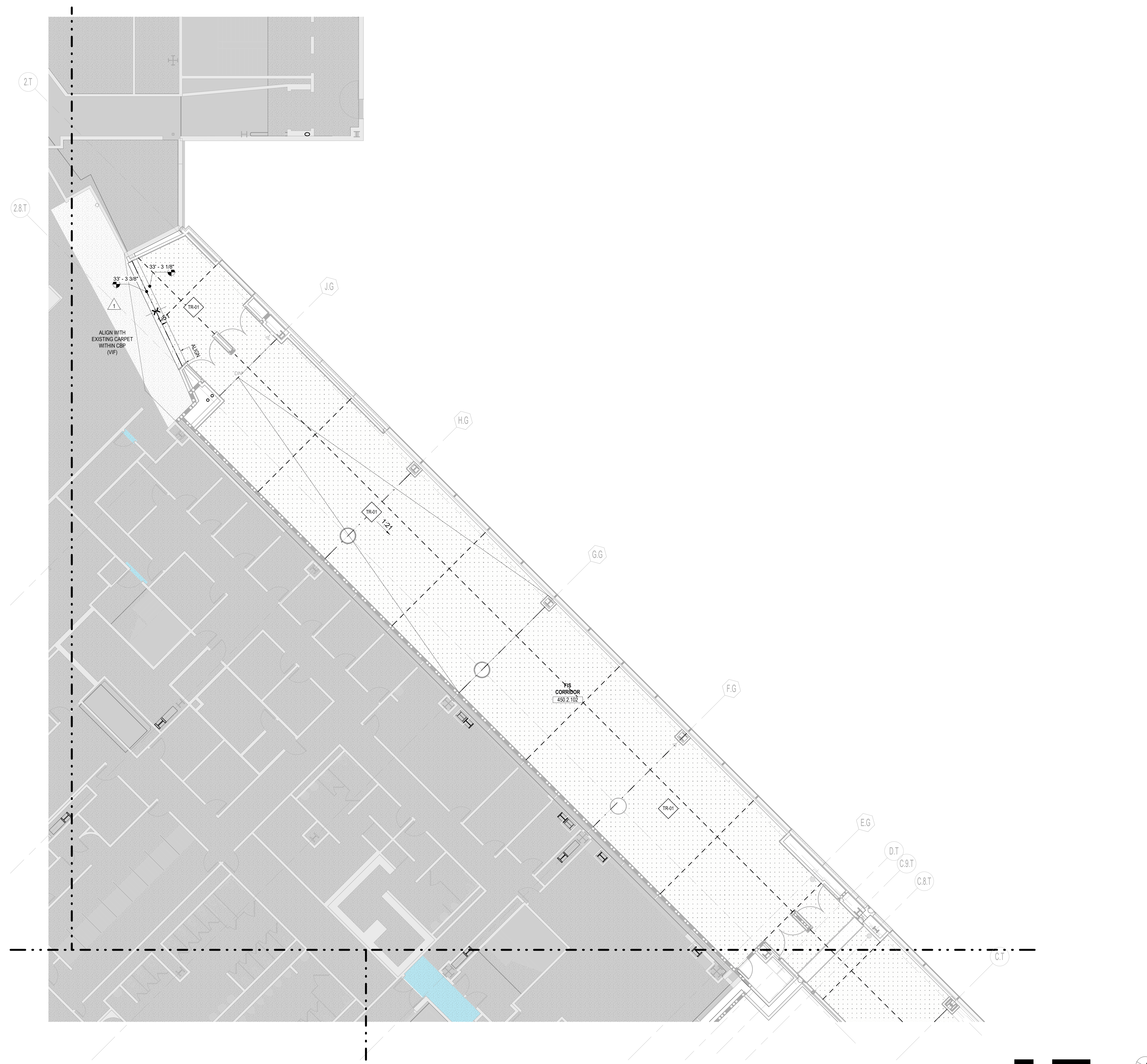


CONTRACT NO. 10071.76\_400  
 PROJECT TITLE TERMINAL 3 WEST MODERNIZATION  
 PACKAGE 7B - C4C  
 SHEET TITLE FINISH FLOOR PLAN - LEVEL 2 - AREA 60

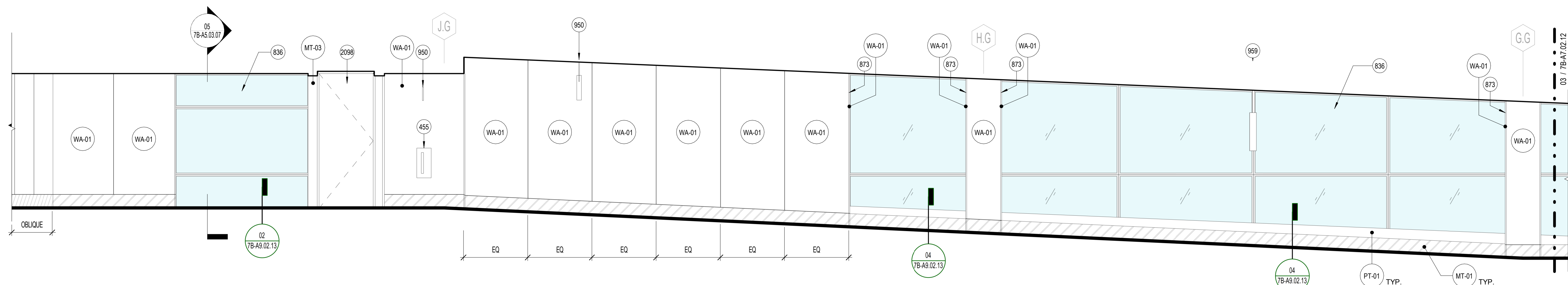
APPROVED: \_\_\_\_\_  
 APPROVED: \_\_\_\_\_  
 DESIGNED BY: \_\_\_\_\_ CHECKED BY: \_\_\_\_\_  
 DRAWN BY: \_\_\_\_\_ DATE: 03/09/2025  
 SCALE: As indicated SIZE: ARCH-E1  
 SHEET NUMBER

7B-A4.L2.60

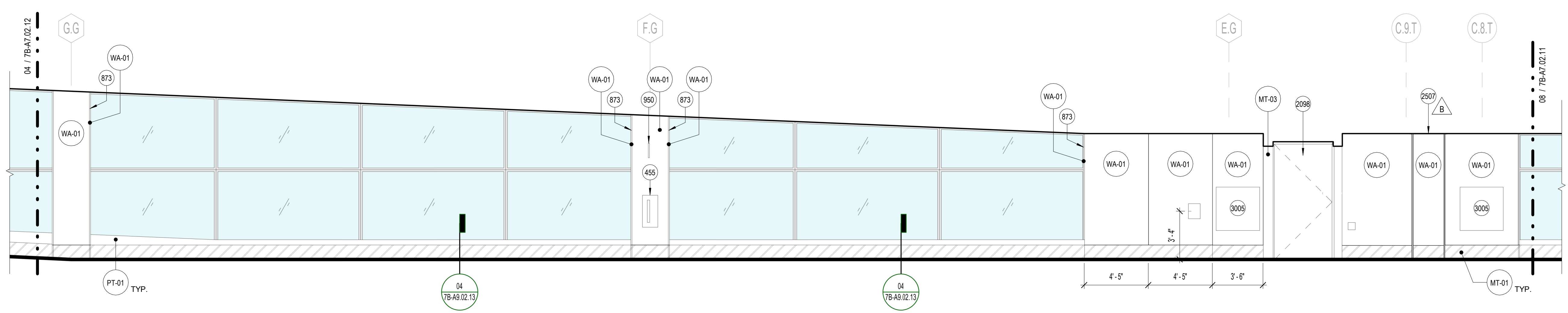
PROGRESS



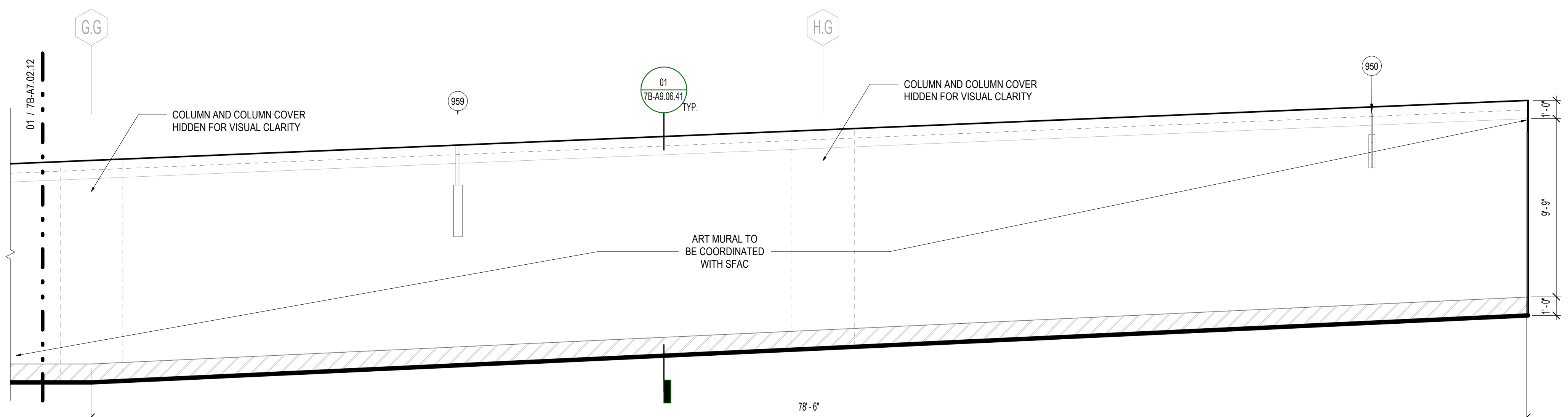
FILE PATH: \\adobe\apps\111191\_SFO\3\B\Modernization\10071.76\_450\_T3W\_ARCH\_SFL\_C4C.rvt



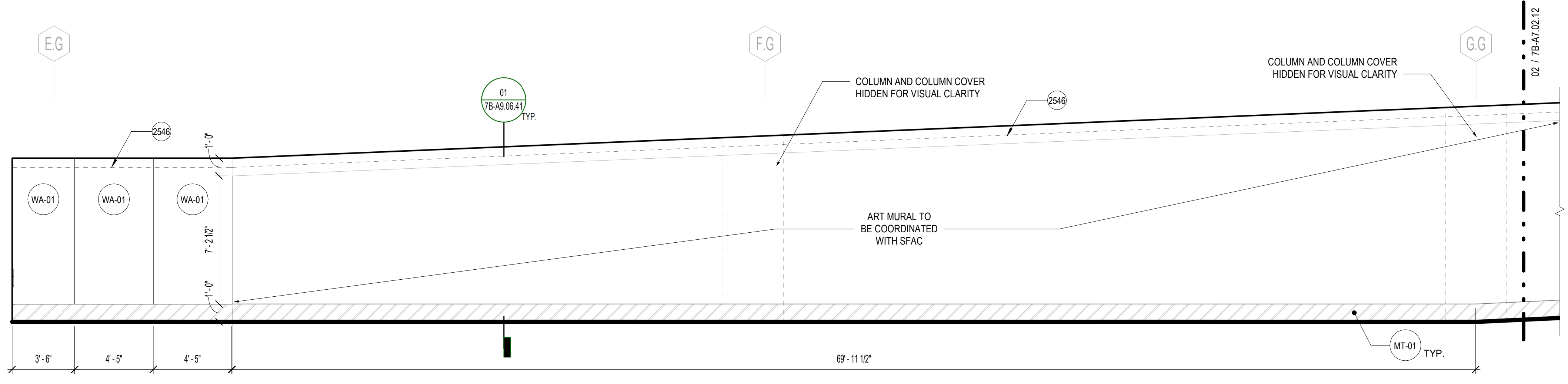
**04 ELEV - 02 - 60 - FIS CORRIDOR 450.2.102 - D**  
SCALE: 1/4" = 1'-0"



**03 ELEV - 02 - 60 - FIS CORRIDOR 450.2.102 - C**  
SCALE: 1/4" = 1'-0"



**02 ELEV - 02 - 60 - FIS CORRIDOR 450.2.102 - B**  
SCALE: 1/4" = 1'-0"



**01 ELEV - 02 - 60 - FIS CORRIDOR 450.2.102 - A**  
SCALE: 1/4" = 1'-0"

**SHEET NOTES**

- 455 FIRE EXTINGUISHER CABINET, FULLY RECESSED
- 836 REFER TO A5 SERIES FOR EXTERIOR WINDOW WALL SYSTEM
- 873 SCHEDULED WALL FINISH TO CONTINUE AT SIDE WALL
- 950 SIGNAGE SGD
- 959 CBP MONITORS, PROVIDE POWER AND DATE, SED, STCD
- 2098 EXIT BYPASS DOOR ON HOLD OPENS
- 2507 EXPANSION JOINT. FINISH TO MATCH ADJACENT WALL. PAINT REVEALS PT-01 AT WALL COVERING LOCATIONS, U.O.N., SEE ELEVATIONS.
- 2546 LINE OF FINISH CEILING
- 3005 FIRE HOSE VALVE CABINET, FULLY RECESSED, SFPD. PAINT PT-01 U.O.N. SEE ELEVATIONS.

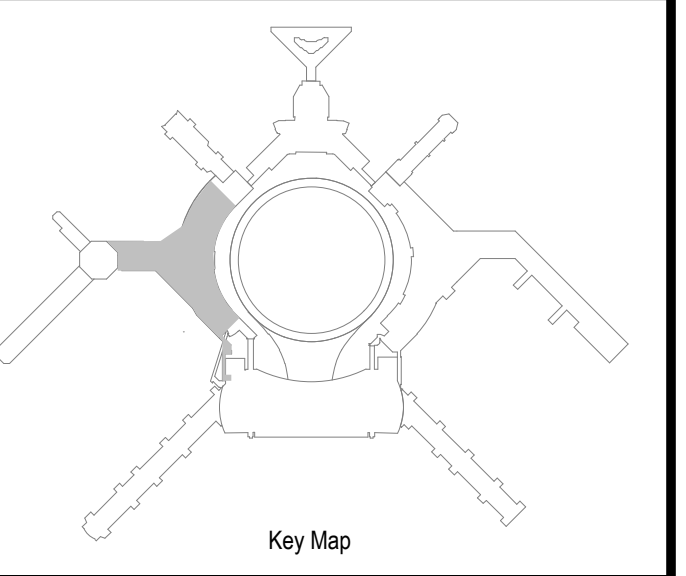
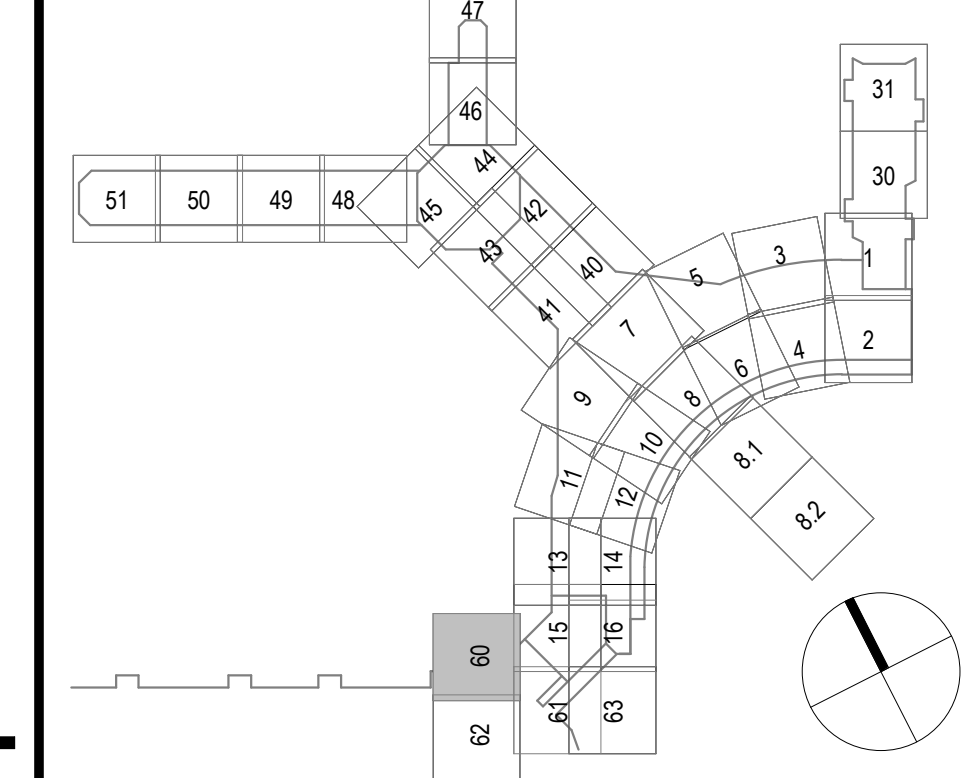
**GENERAL NOTES**

1. SEE SPECIFICATION DIVISION 09 FOR ADDITIONAL FINISH INFORMATION.
2. REFER TO A0 SERIES FOR FINISH SCHEDULE INFORMATION.
3. FOR FINISHES OF WALLS THAT ARE NOT ELEVATED, REFER TO A0 SERIES FOR ROOM FINISH SCHEDULE.
4. REFER TO A0 SERIES DRAWINGS, DOOR SCHEDULE, AND SPECIFICATIONS FOR DOOR INFORMATION.
5. REFER TO A4 OR A6 SERIES FOR FLOOR FINISH INFORMATION.
6. REFER TO A6 SERIES FOR ENLARGED PLANS AND ELEVATIONS WITH ADDITIONAL FINISH AND DEVICE INFORMATION.
7. ALL GYP BD WALLS TO BE PAINTED PT-01 UNO.
8. ALL WALL BASE TO BE MT-01 U.O. PROVIDE EQUAL CUT LENGTHS AT EACH END OF WALL WITH A DIMENSION OF NO LESS THAN 24".
9. PATCH, REPAIR AND CLEAN ALL (EQ) TO REMAIN FINISHES TO MATCH APPEARANCE. PATCH WALLS AT DEMO WALL PARTITIONS TO MATCH ADJACENT FINISHES.
10. ALL PARTITIONS TO RECEIVE LEVEL 4 FINISH U.O. REFER TO SPECIFICATIONS.
11. ENSURE ALL SURFACES RECEIVING FINISHES ARE CLEAN, TRUE AND FREE OF IRREGULARITIES. DO NOT PROCEED WITH WORK UNTIL UNSATISFACTORY CONDITIONS HAVE BEEN CORRECTED.
12. REFER TO ELEVATIONS FOR GLAZING AND FILM INFORMATION.
13. REFER TO A9 SERIES FOR TYPICAL WALL PANEL JOINT, CORNER TREATMENT, COLUMN COVER, HEADER, GLAZING, DOOR, AND OPENINGS DETAILS.
14. REFER TO A10 SERIES SHEETS FOR FURNITURE INFORMATION.
15. REFER TO VOLUME 4 SG SERIES SHEETS FOR SIGNAGE REQUIREMENTS AND SIGNAGE SUPPORTS.
16. SEE CIVIL, STRUCTURAL, MECHANICAL, ELECTRICAL, PLUMBING, AV, TELECOM, SECURITY, LIGHTING & PASSENGER BOARDING BRIDGES, BAGGAGE HANDLING SYSTEM, AND FIRE PROTECTION FOR ADDITIONAL WORK.
17. WHITE ELECTRICAL OUTLETS, RECEPTACLE COVERS, SWITCHES AND SWITCH PLATES TO BE USED U.O. REFER TO ELEVATIONS FOR LOCATIONS OF NON-WHITE APPLICATIONS TO CORRESPOND WITH WALL FINISH.
18. FINAL ADVERTISING LAYOUT TO BE DETERMINED.
19. REFER TO ELECTRICAL, POWER AND TELECOMMUNICATION DRAWINGS FOR FURTHER INFORMATION ON POWER AND DATA LOCATIONS TO BE COORDINATED WITH FINISHES.
20. PUBLIC AND SUPPORT SPACE CORNER GUARDS TO BE PROVIDED AND INSTALLED AT ALL EXPOSED CORNERS.
21. ALL SUPPORT SPACE CORNER GUARDS TO BE RESILIENT. SEE SPECIFICATIONS FOR PRODUCT INFORMATION.
22. PROVIDE WALL PROTECTION WAINSCOT PANELING WITH PVC-FREE BUMPER RAILS AT TOP AND BOTTOM AND CORNERS. AT ALL SERVICE CORRIDORS AND VESTIBULES UNO.
23. A WAINSCOT OF FIRE TREATED PLYWOOD TO BEGIN 6" AFF AND END AT 8'-6" AFF TO BE PROVIDED AT ALL SSR, TENANT WIRING CLOSETS, ELECTRICAL METERING ROOMS, ZONE CLOSETS, CELLULAR DAS, AND IDF ROOM UNO.
24. HATCHES ARE DIAGNOSTIC AND INTENDED TO INDICATE DIFFERENT FINISH TYPES ONLY; HATCHES DO NOT REPRESENT PRODUCT INSTALLATION DIRECTION OR LAYOUT.
25. ALL NICHE TO HAVE A 9'-1" SOFFIT AFF. U.O. REFER TO RCP.

**GRAPHICS LEGEND**

- PT-XX WALL FINISH TAG - SEE A0 SERIES FINISH SCHEDULE FOR FINISH INFORMATION. LEADERS INDICATE THE EXTENT OF FINISH
- PT-XX SPECIALTY FINISH TAG - SEE A0 SERIES FINISH SCHEDULE FOR FINISH INFORMATION
- GLAZING, SEE AXX SERIES FOR MORE INFORMATION
- FURNITURE, EQUIPMENT AND SIGNAGE BY OTHERS
- NOT IN CONTRACT
- UNDER SEPARATE PERMIT PKG
- TO BE ISSUED IN FUTURE BULLETIN

**KEY PLAN**



NO.	DATE	REVISION DESCRIPTION
1	03/09/2008	BUCE PACKAGE 7B - BULLETIN 1
2	10/24/2008	BUCE PACKAGE 7B - DESIGN CHANGES
3	04/25/2009	BUCE PACKAGE 7B - 50% CONSTRUCTION DOCUMENT
4	12/13/2009	BUCE PACKAGE 7B - 100% DESIGN DEVELOPMENT
5	05/27/2024	PACKAGE 07 - 50% DESIGN DEVELOPMENT

**Turner**  
100 Pringle Ave, Suite 340  
Walnut Creek, CA 94596  
415-509-4229

**Gensler**  
220 Montgomery Street, Suite 200  
San Francisco, CA 94104  
415-433-3700

**TEF**  
1420 Sutter Street  
San Francisco, CA 94109  
415-391-7918

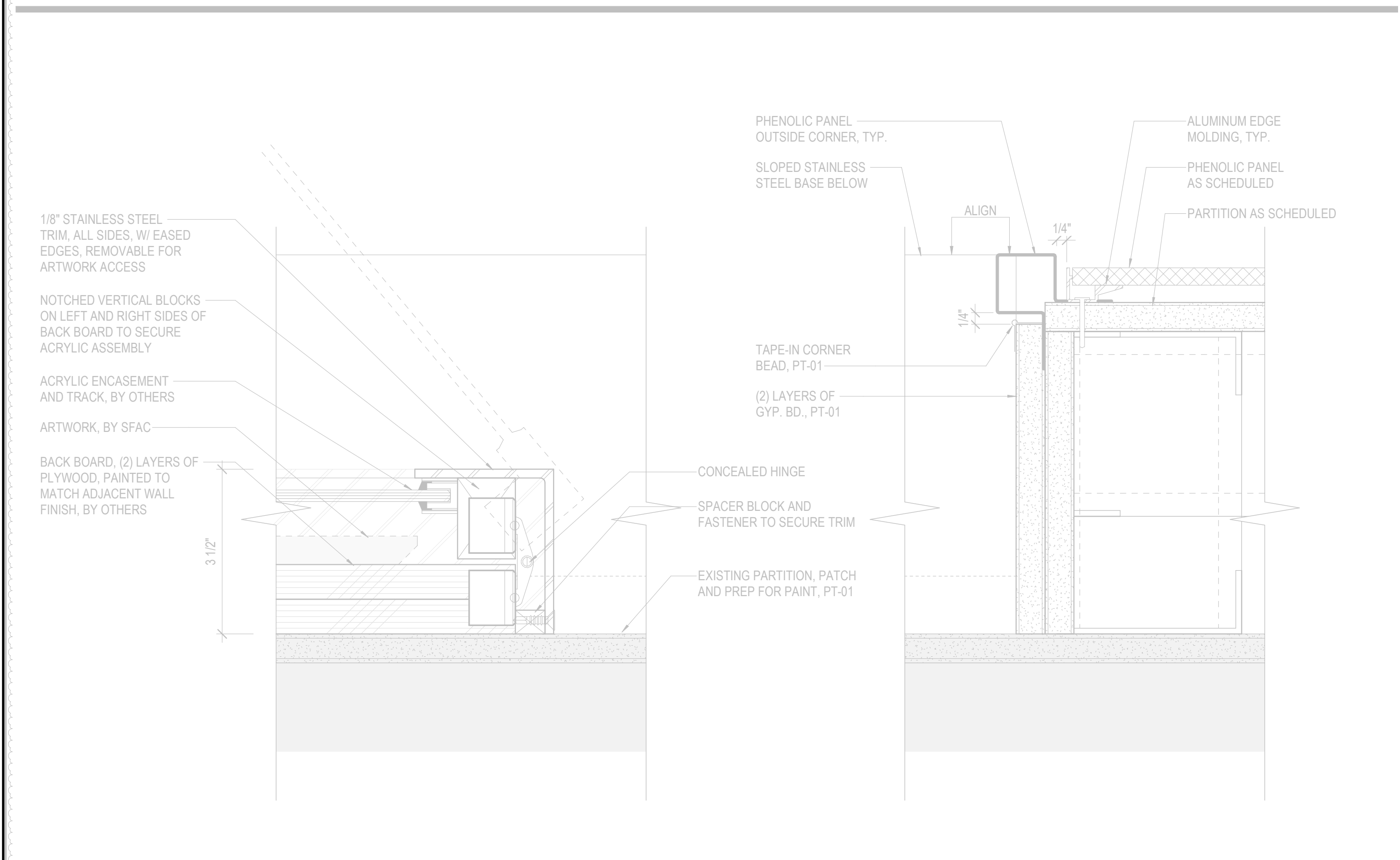
CONTRACT NO.	10071.76_400
PROJECT TITLE	TERMINAL 3 WEST MODERNIZATION
PACKAGE	PACKAGE 7B - C4C
SHEET TITLE	INT ELEV - LEVEL 2 - FIS CORRIDOR

**PROGRESS**

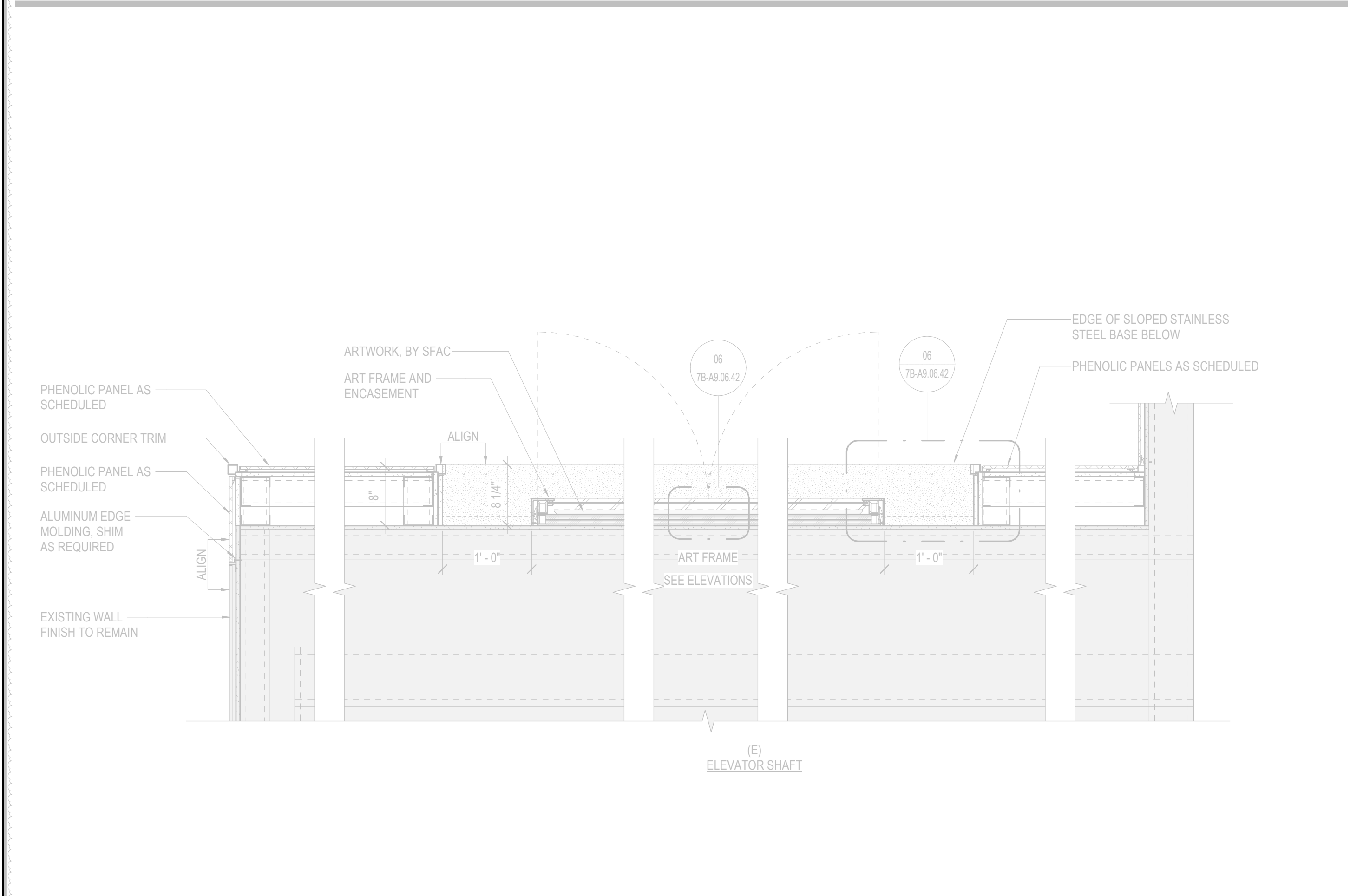
APPROVED:	
APPROVED:	
DESIGNED BY:	CHECKED BY:
DRAWN BY:	DATE:
SCALE:	SIZE:
SHEET NUMBER:	ARCH-E1

**7B-A7.02.12**

**07 ENLARGED PLAN - WHEELCHAIR LOUNGE - ART CASE**  
SCALE: 6" = 1'-0"

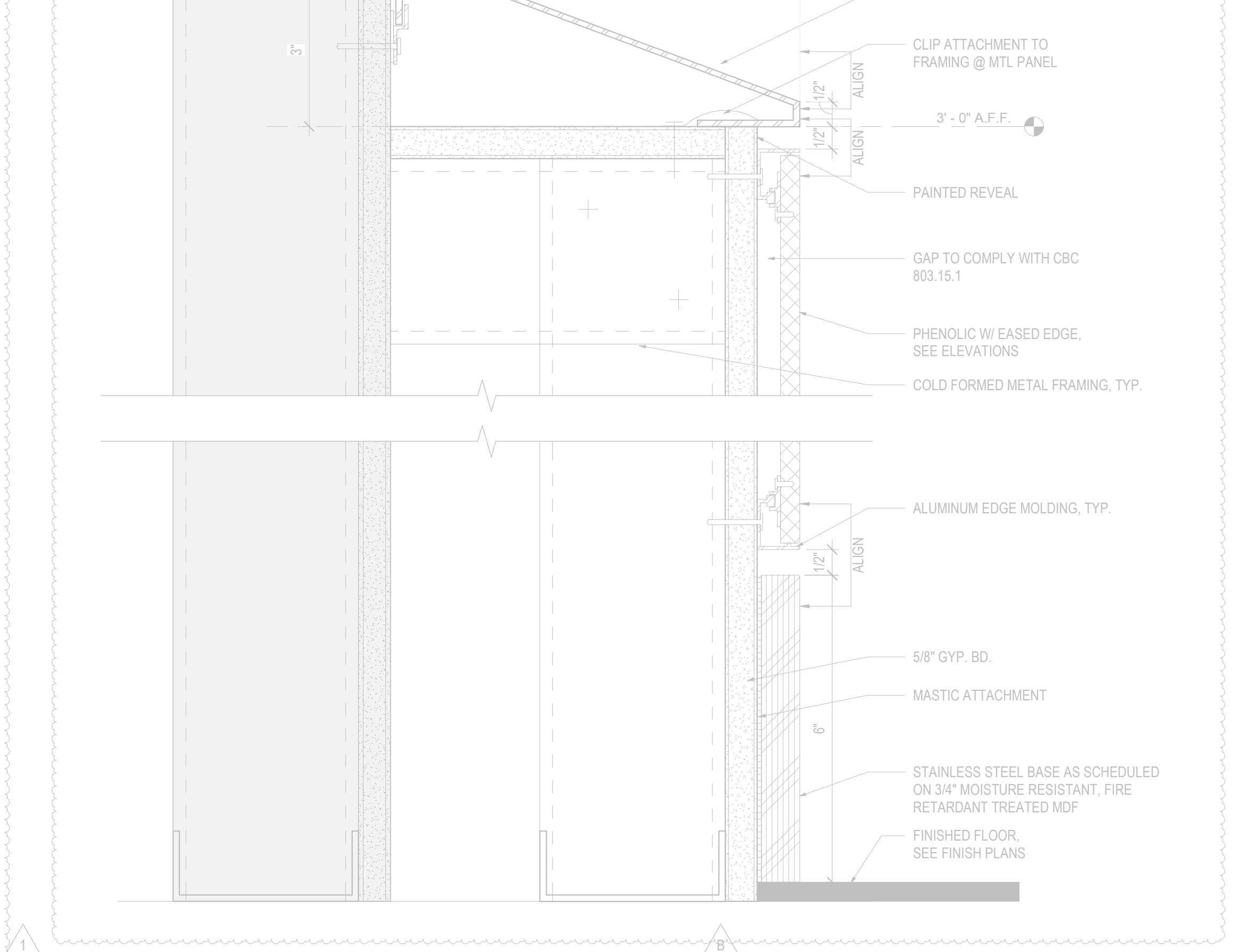


**06 ART WALL NICHE - WHEELCHAIR LOUNGE - JAMB**  
SCALE: 6" = 1'-0"

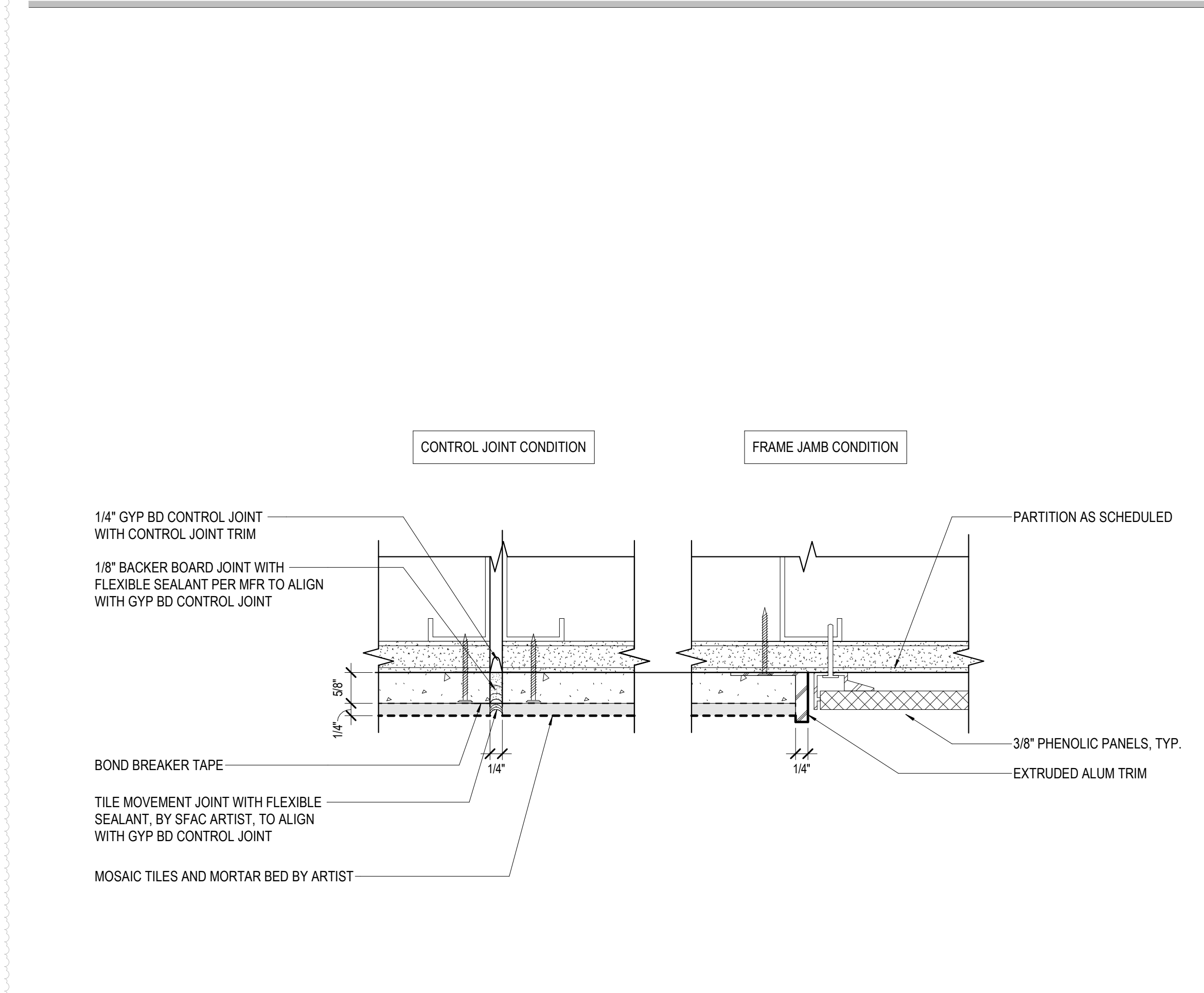


**05 ART WALL NICHE - WHEELCHAIR LOUNGE - PLAN**  
SCALE: 1" = 1'-0"

**04 ART WALL NICHE - WHEELCHAIR LOUNGE - BASE SECTION**  
SCALE: 6" = 1'-0"

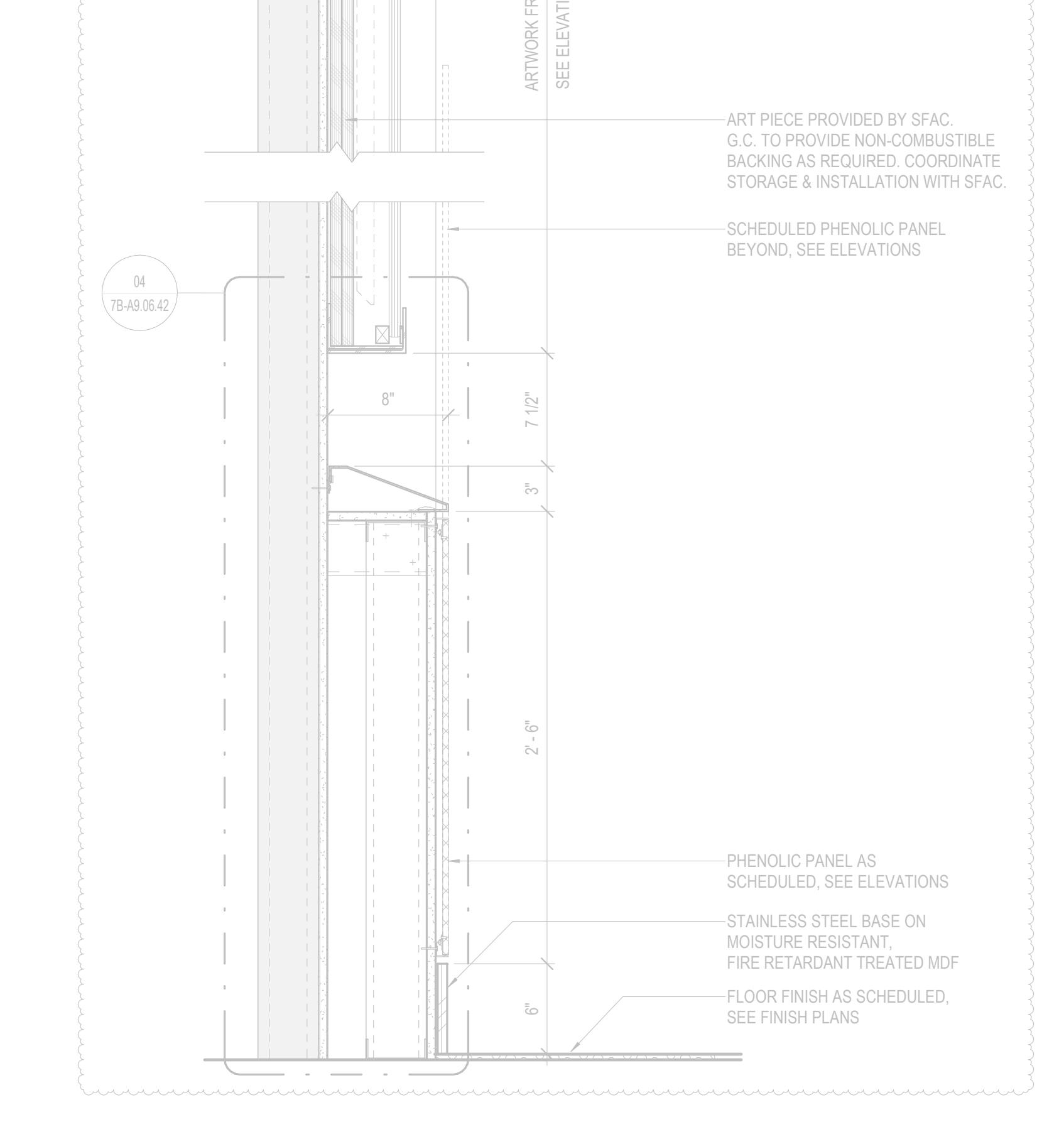


**03 FIS ART MOUNTING DETAIL - PLAN**  
SCALE: 6" = 1'-0"

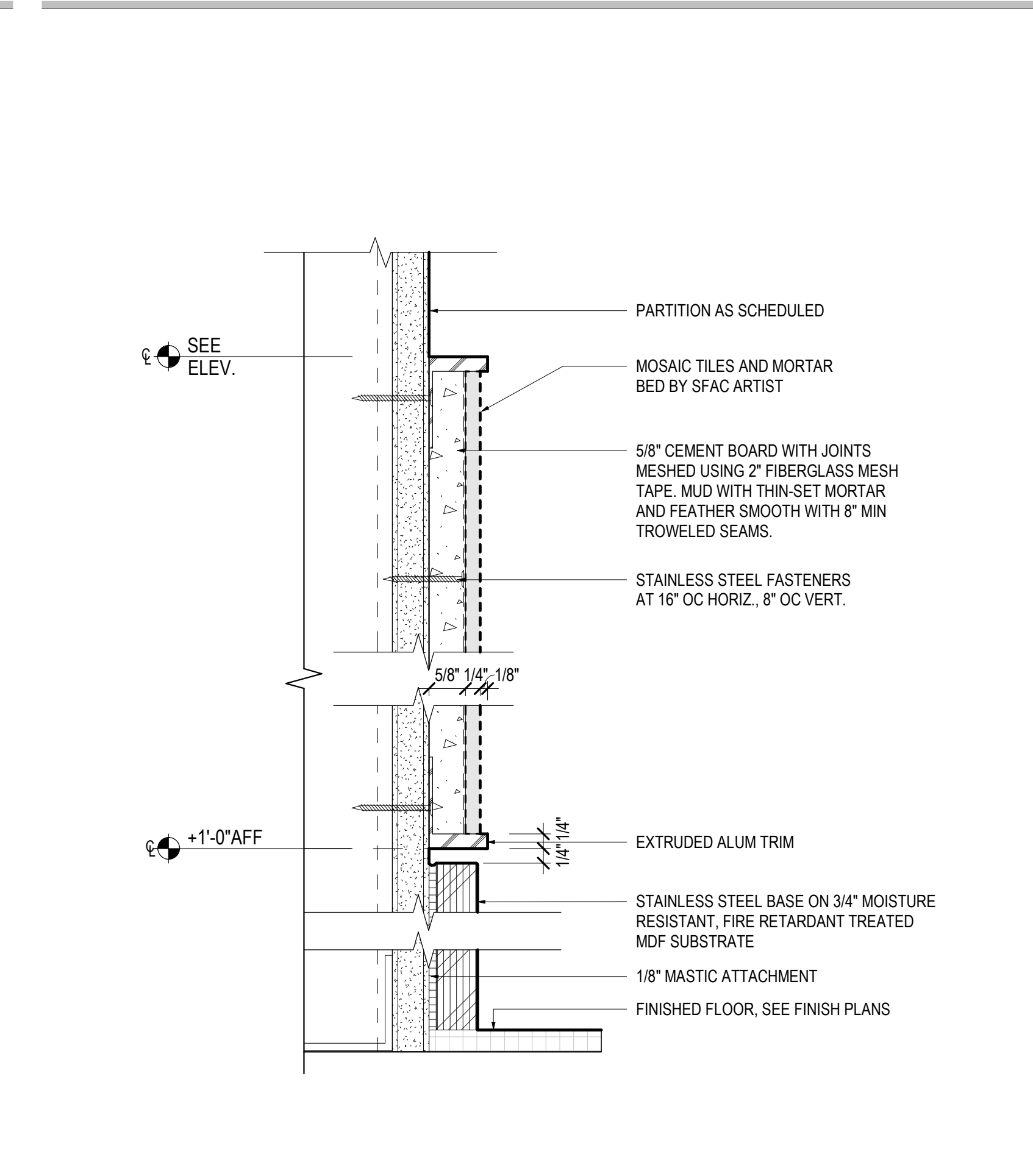


**01 FIS ART MOUNTING DETAIL**  
SCALE: 6" = 1'-0"

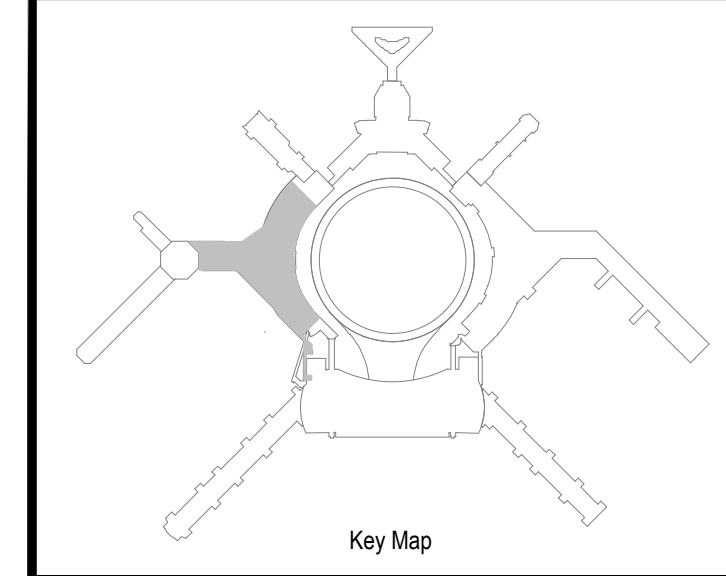
**02 ART WALL NICHE - WHEELCHAIR LOUNGE - SECTION**  
SCALE: 1 1/2" = 1'-0"



**01 FIS ART MOUNTING DETAIL**  
SCALE: 6" = 1'-0"



**01 FIS ART MOUNTING DETAIL**  
SCALE: 6" = 1'-0"



NO.	DATE	REVISION DESCRIPTION
1	03/07/2025	PACKAGE 5B - 50% CONSTRUCTION DOCUMENTS
2	03/15/2025	PACKAGE 7B - ISSUE FOR PERMIT
3	03/24/2025	PACKAGE 7B - DESIGN CHANGE
4	03/24/2025	PACKAGE 7B - DESIGN CHANGE
5	03/24/2025	PACKAGE 7B - BULLETIN 2
6	03/24/2025	PACKAGE 7B - BULLETIN 2

**Turner**  
100 Pringle Ave, Suite 340  
Walnut Creek, CA 94596  
415-509-4229

**Gensler**  
220 Montgomery Street, Suite 200  
San Francisco, CA 94104  
415-433-3700

**TEF**  
1420 Sutter Street  
San Francisco, CA 94109  
415-381-7918

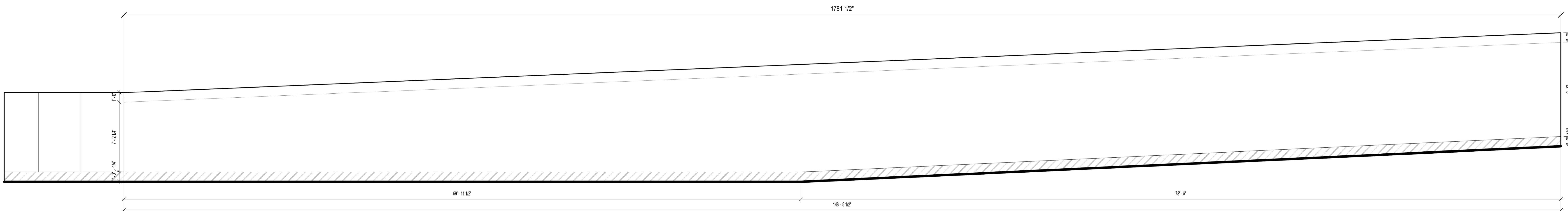
CONTRACT NO.	10071.76_400
PROJECT TITLE	TERMINAL 3 WEST MODERNIZATION
PACKAGE	PACKAGE 7B - C4C
SHEET TITLE	ARTS ENRICHMENT DETAILS - SFAC

APPROVED:	
APPROVED:	
DESIGNED BY:	CHECKED BY:
DRAWN BY:	DATE:
SCALE:	SIZE:
As indicated	ARCH-E1
SHEET NUMBER	

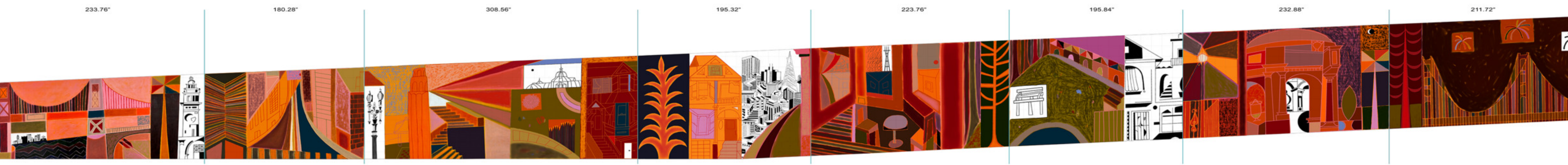
**PROGRESS**

APPROVED:	
APPROVED:	
DESIGNED BY:	CHECKED BY:
DRAWN BY:	DATE:
SCALE:	SIZE:
As indicated	ARCH-E1
SHEET NUMBER	

**7B-A9.06.42**



**C4C LEVEL 2 - FIS CORRIDOR - MUZAE SESAY**  
**MOSAIC MURAL - ELEVATION**



**C4C LEVEL 2 - FIS CORRIDOR - MUZAE SESAY**  
**MOSAIC MURAL - CONTROL JOINTS**

