

MAY 18, 2026

Civic Design Review

Terminal 3 West Modernization

EXTERIOR FACADES

POST PHASE 3 UPDATE



SAN FRANCISCO INTERNATIONAL AIRPORT

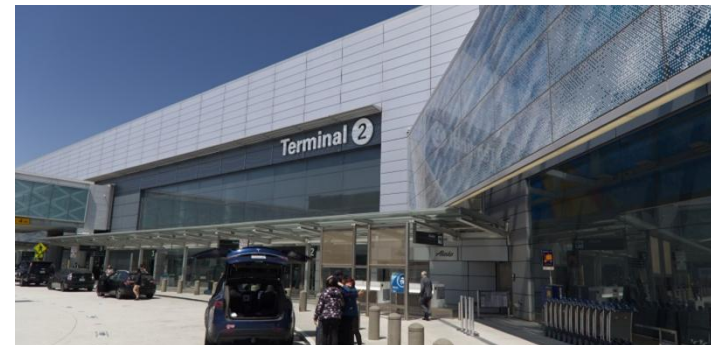
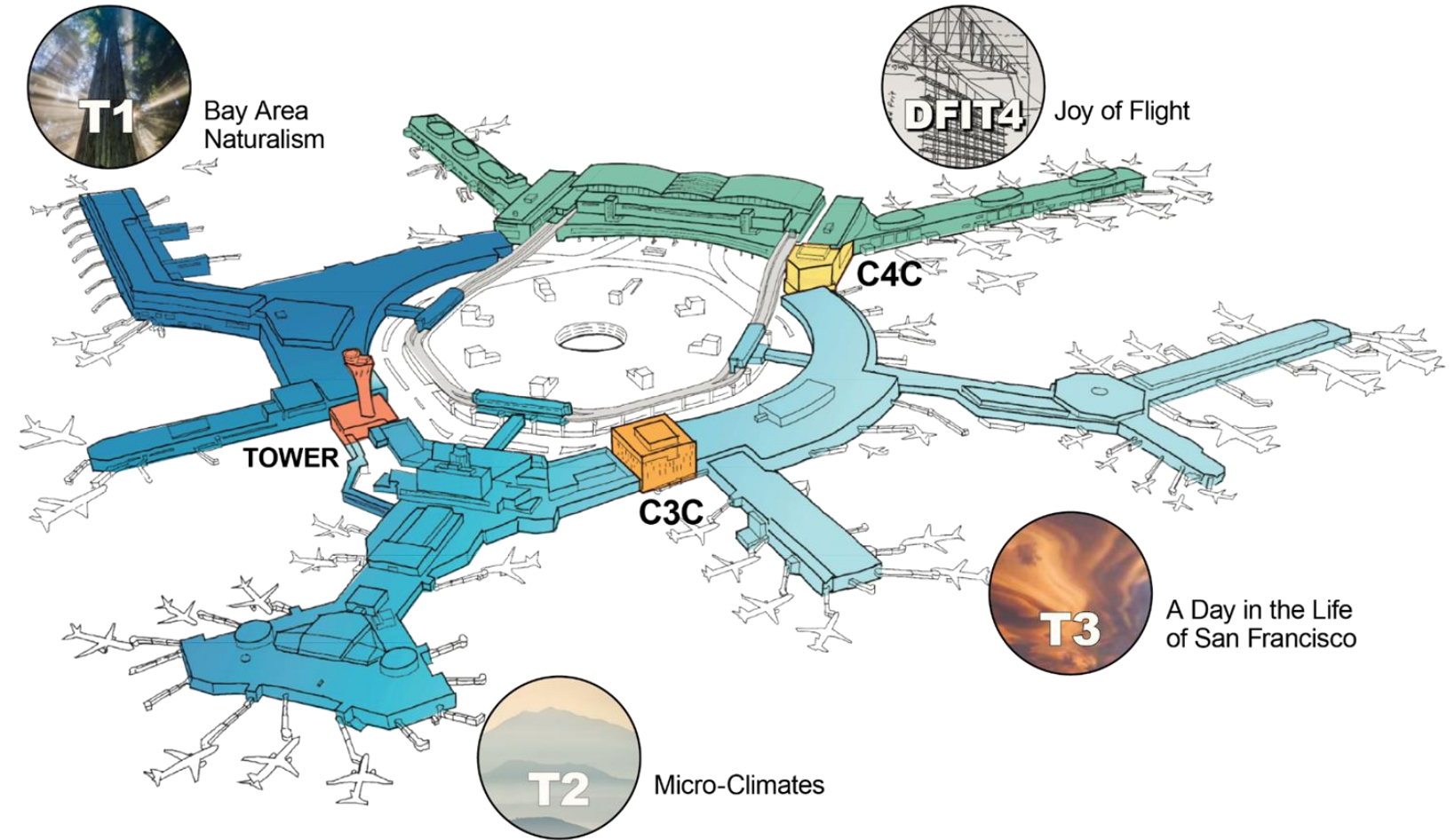


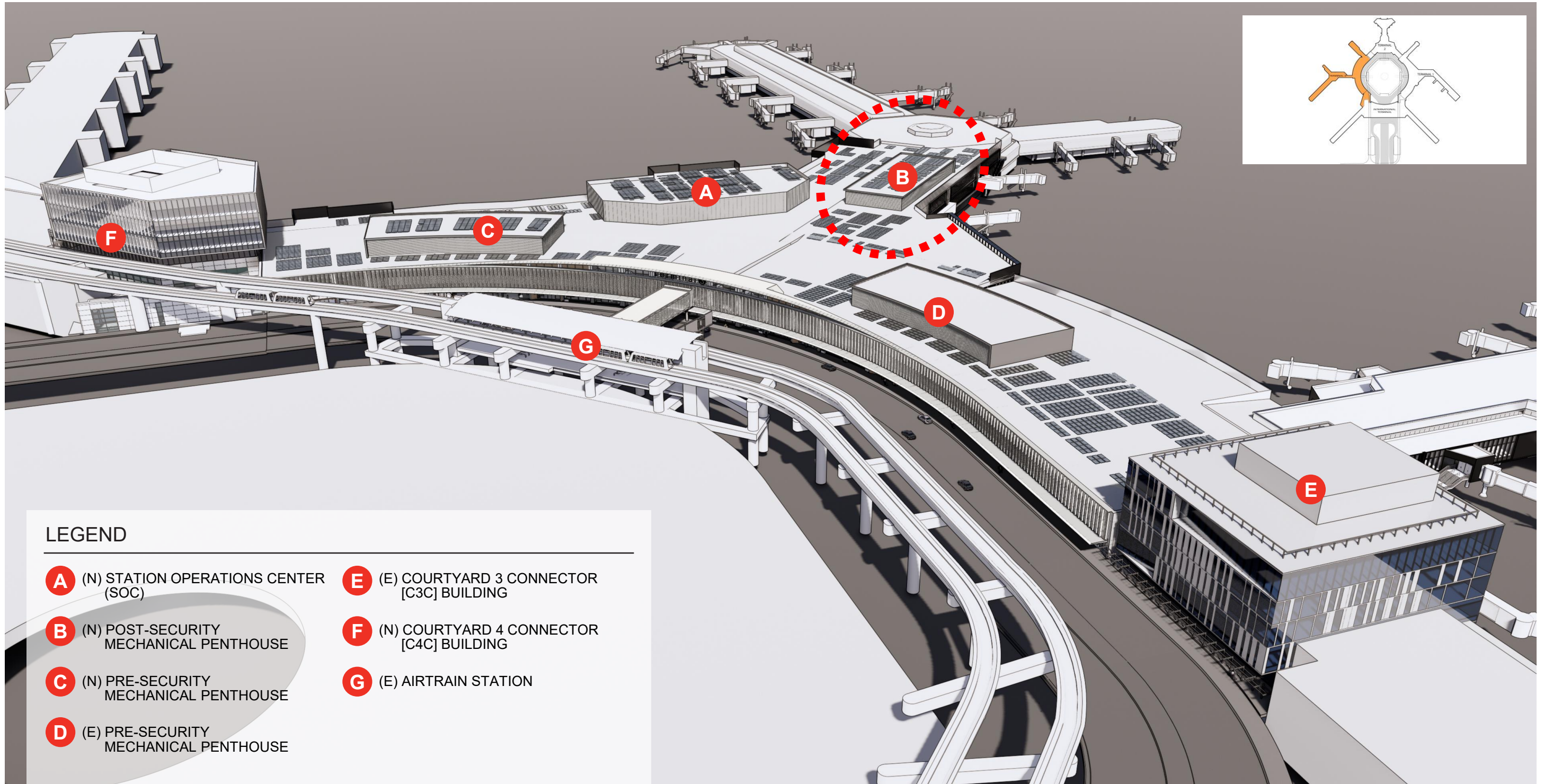
Project Update

- 1** Since our CDRC Phase 3 approval, San Francisco International Airport (SFO) and United Airlines have come to an agreement to expand the airline's lounge footprint within the Terminal 3 West Modernization project, resulting in 1 additional story on the Airside / East side of the building.
- 2** The T3W team has worked to maintain the continuity of the previously approved design and minimize the prominence of the additional mass from key passenger views. The emphasis of important passenger spaces remain, and the team has used similar techniques to other 3-story portions of the building, such as the SOC on the west side.
- 3** The original approved East Addition Penthouse was lengthened one column bay to accommodate the new program requirements and is raised 1 floor to be located on top of the new addition.

T3 ties the chapters together to complete the story.

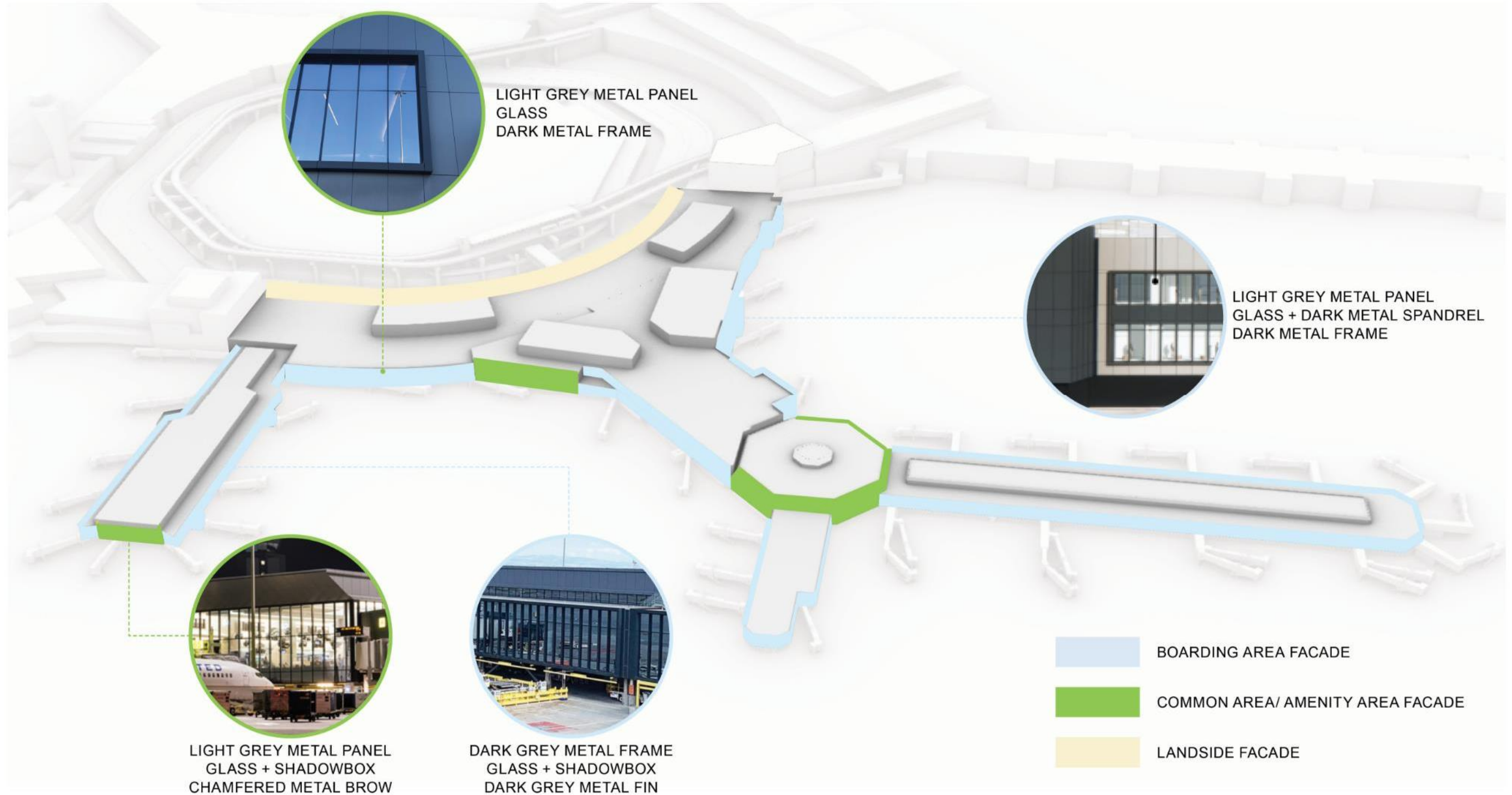
Terminal 3 aligns with the masterplan hierarchy which allows the International Terminal to remain as the “Jewel” of the Airport with primary architectural importance. Like keys on a key ring, the Terminal 3 design builds upon existing campus context and distinguishes its identity as a complementary “key” to the other terminals.

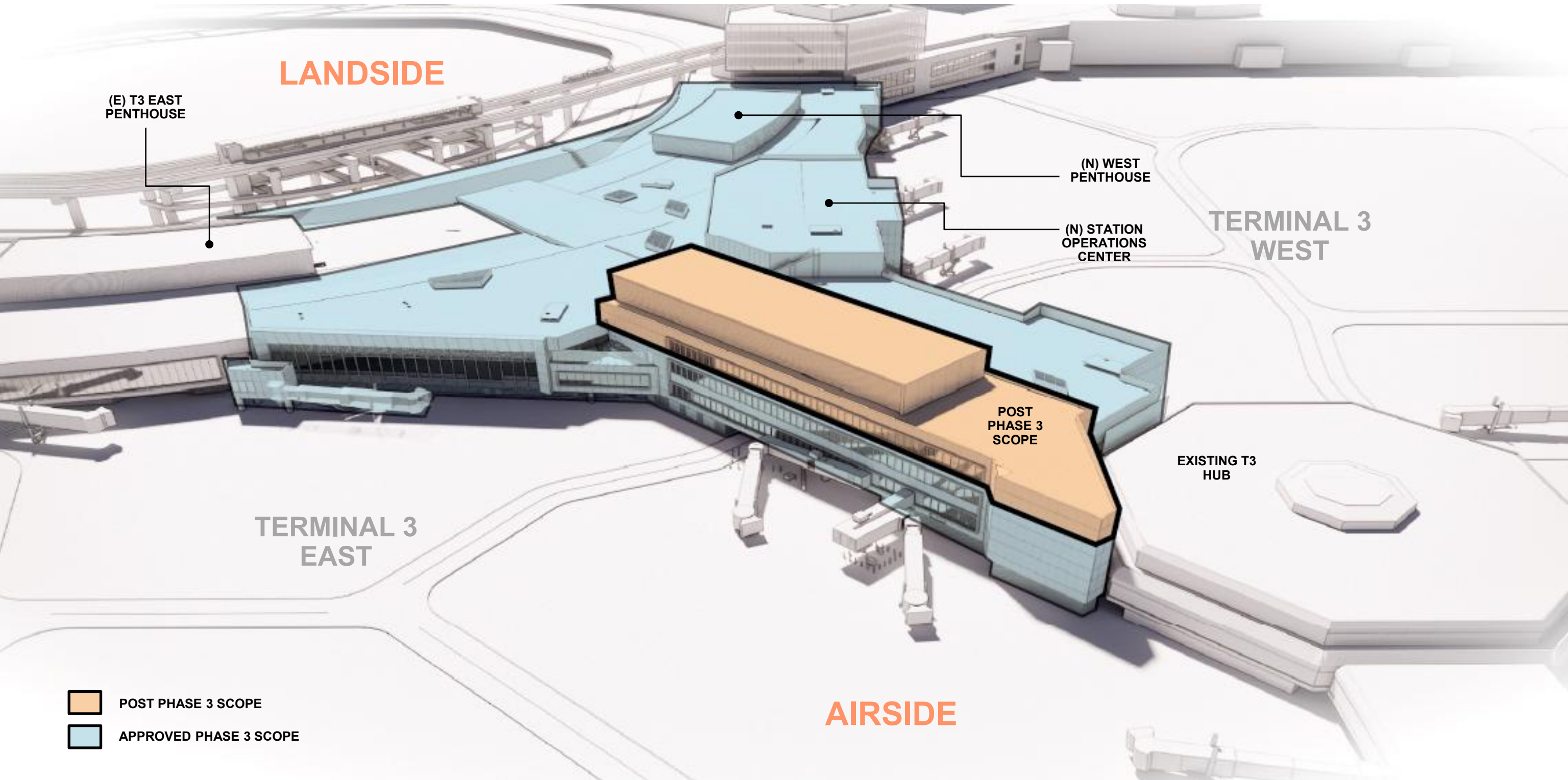


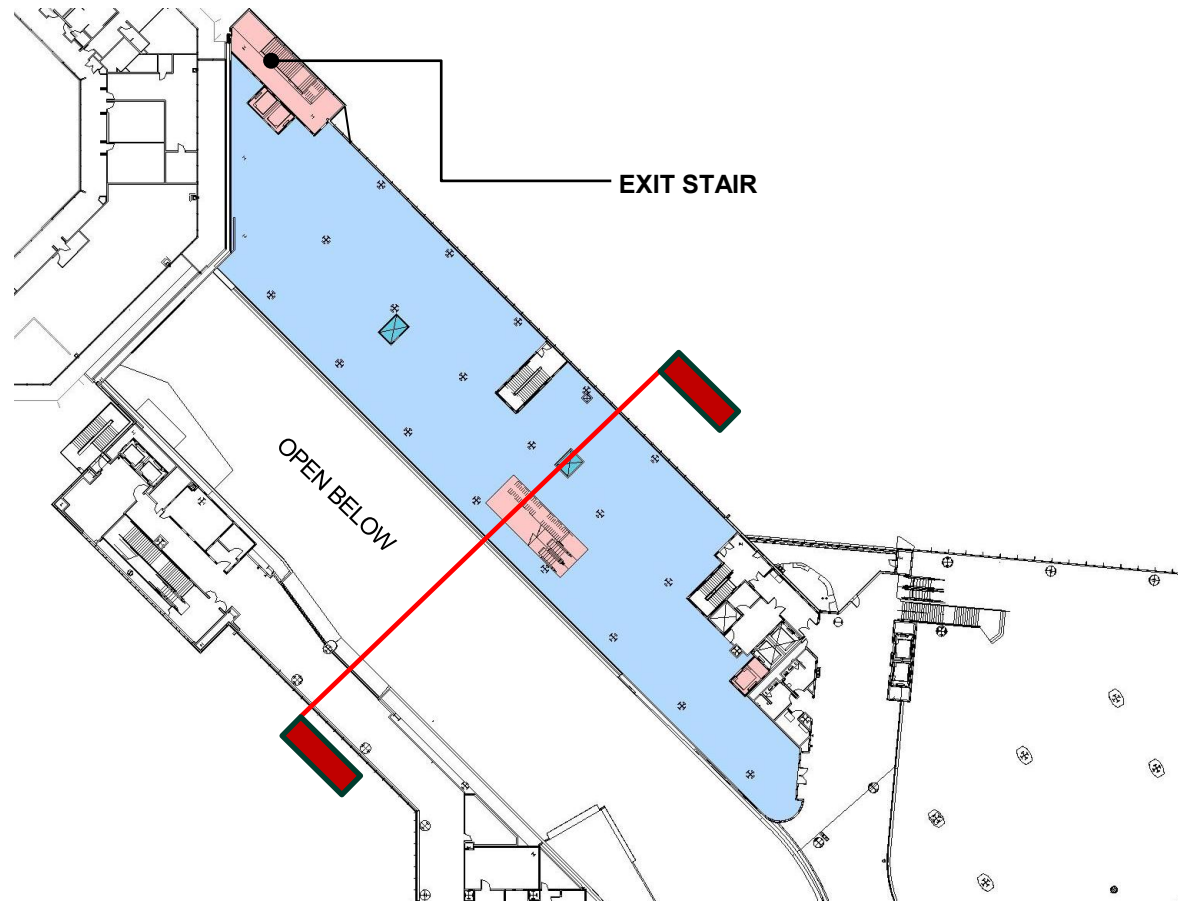


LEGEND

- | | |
|---|---|
| A (N) STATION OPERATIONS CENTER (SOC) | E (E) COURTYARD 3 CONNECTOR [C3C] BUILDING |
| B (N) POST-SECURITY MECHANICAL PENTHOUSE | F (N) COURTYARD 4 CONNECTOR [C4C] BUILDING |
| C (N) PRE-SECURITY MECHANICAL PENTHOUSE | G (E) AIRTRAIN STATION |
| D (E) PRE-SECURITY MECHANICAL PENTHOUSE | |





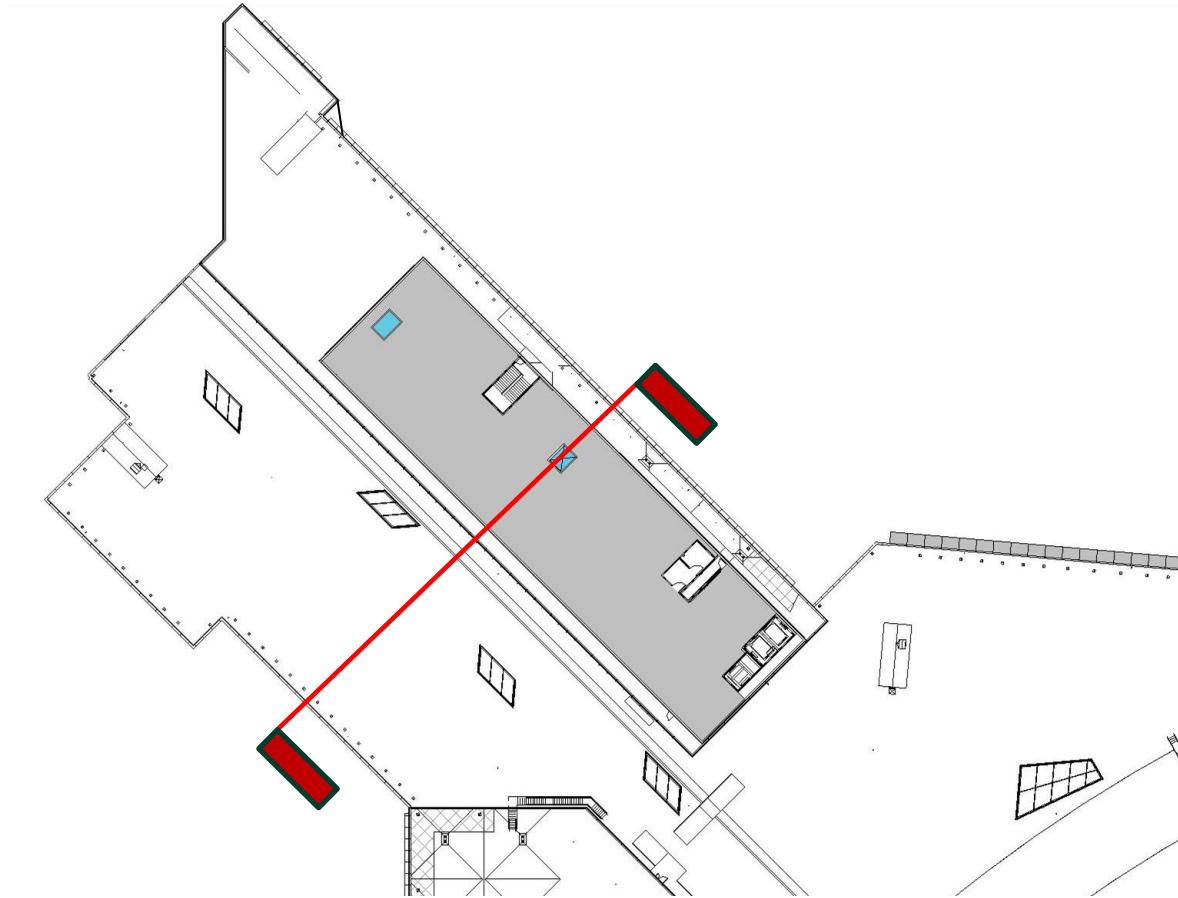


Level 2M/3 (Mezzanine – First Club Level) 22,950 SF



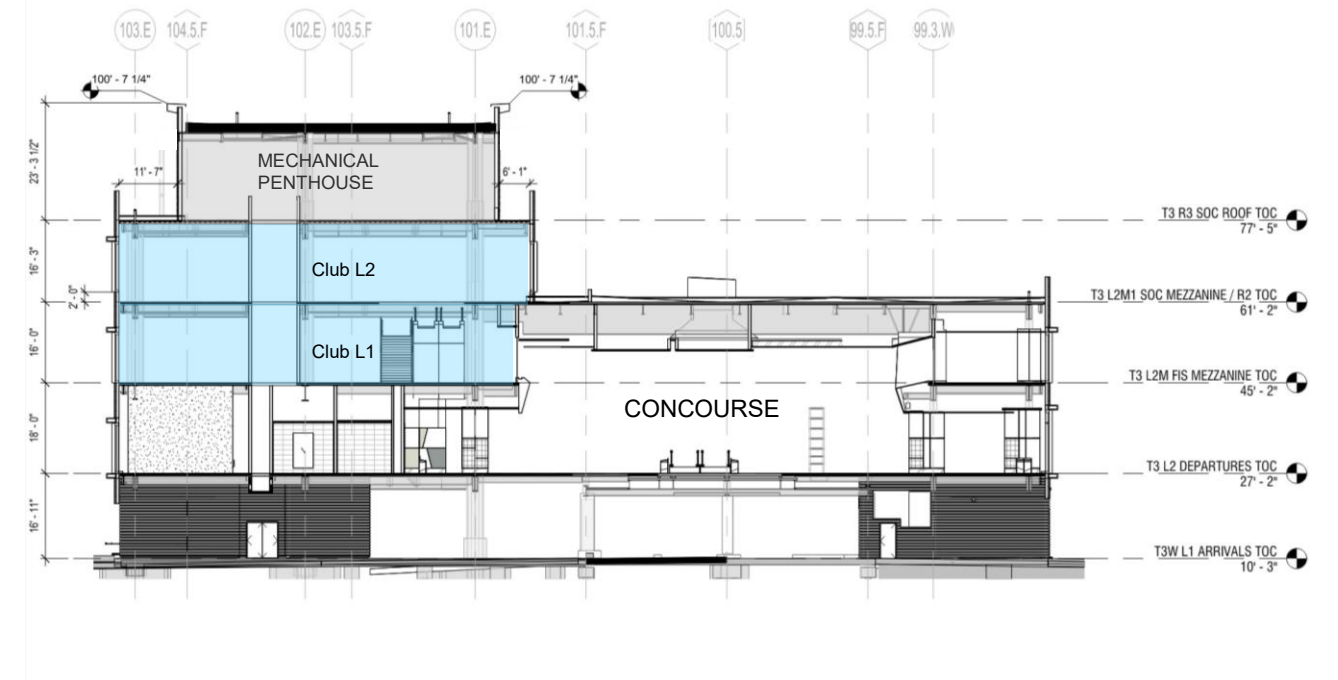
Level 4 (Second Club Level) 22,450 SF

- LEASABLE CLUB AREA
- MODIFIED CIRCULATION
- MODIFIED MEP

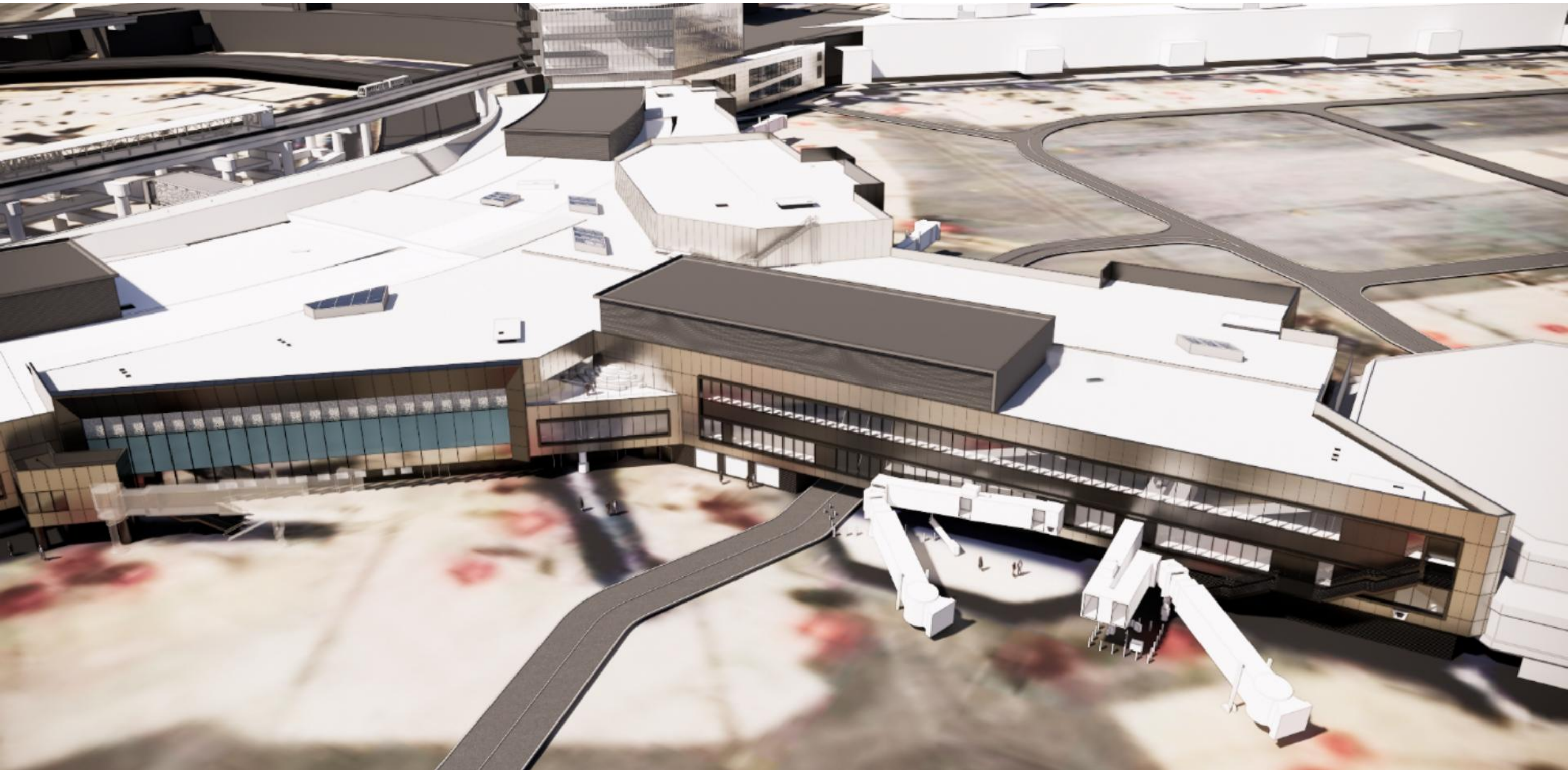


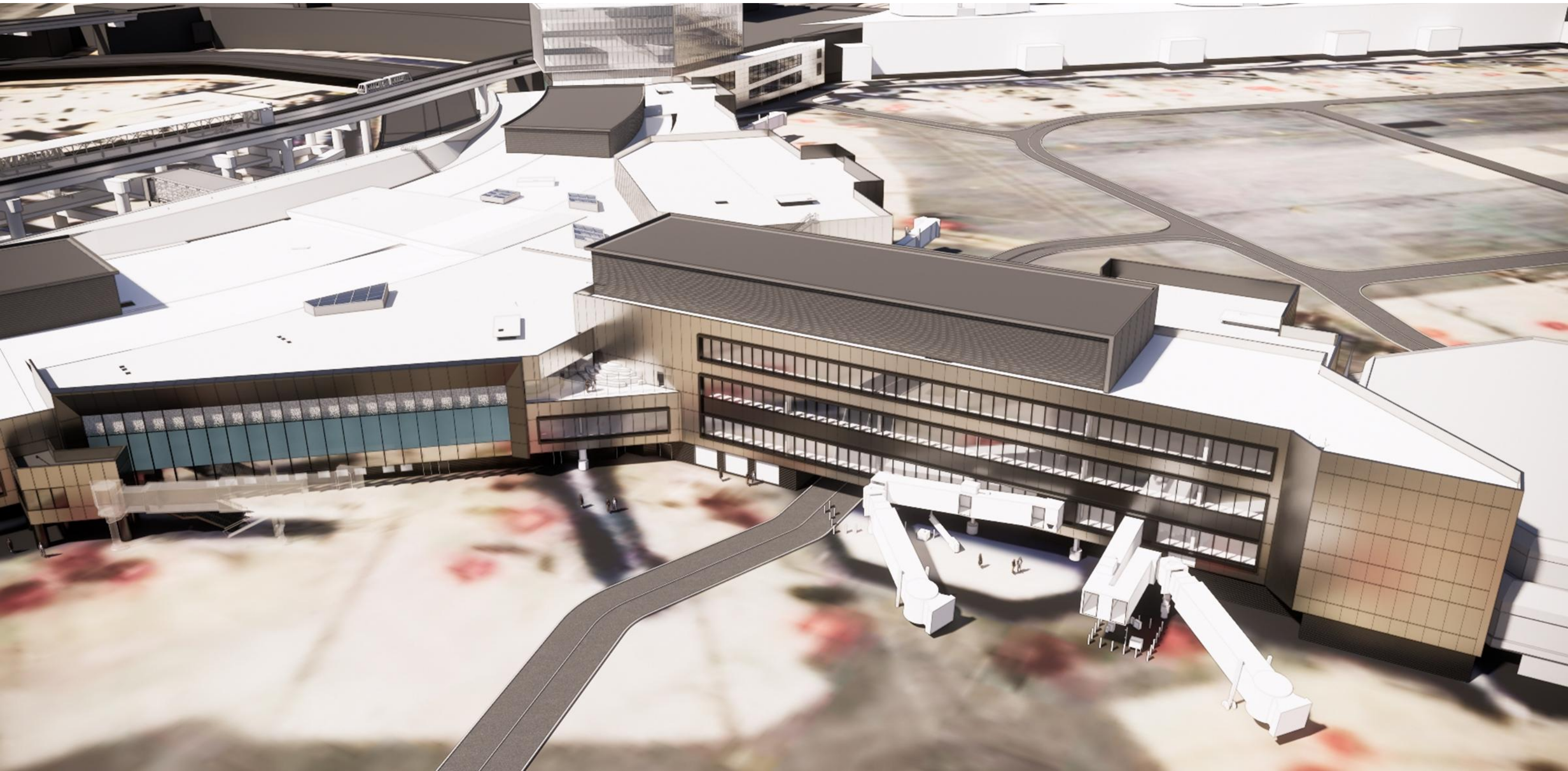
Level 5 (Penthouse Level) 15,300 SF

- PENTHOUSE AREA
- MODIFIED CIRCULATON
- MODIFIED MEP



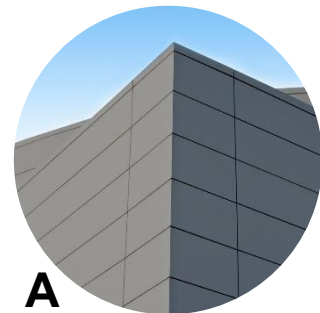
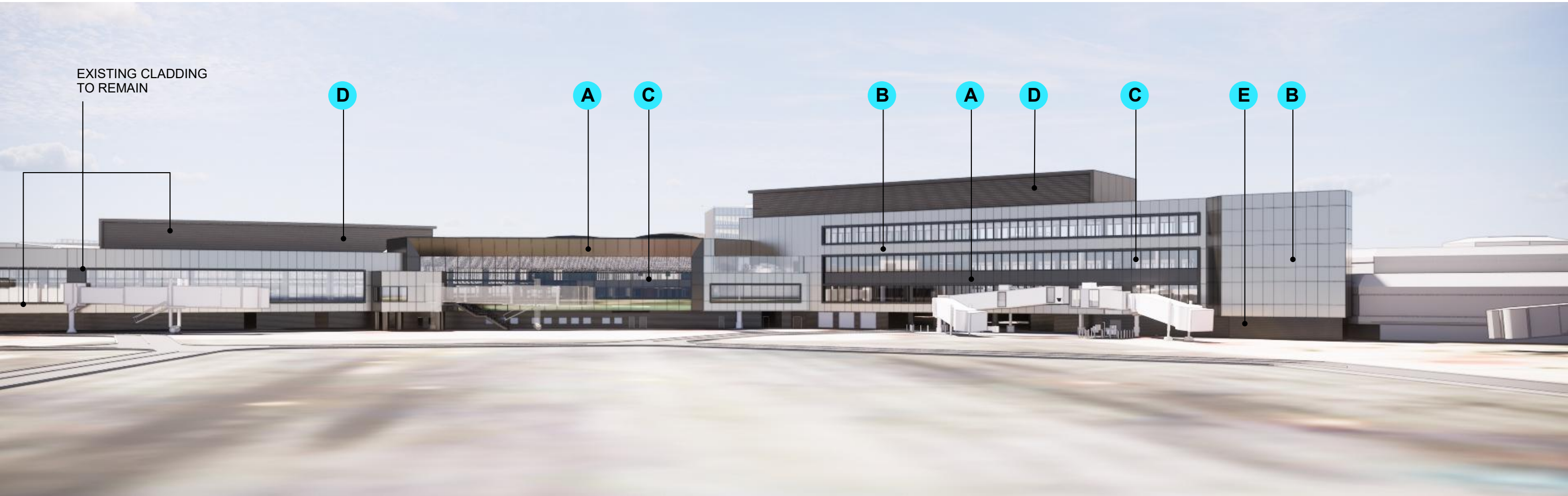
Cross Section



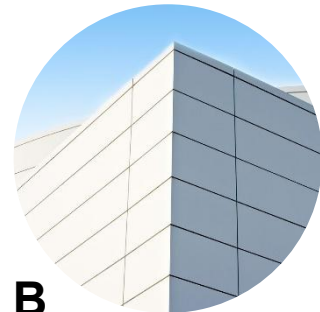




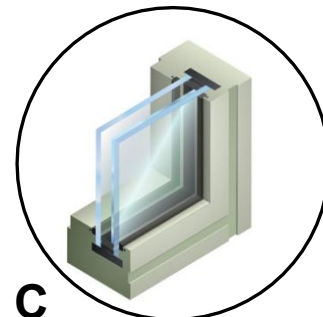




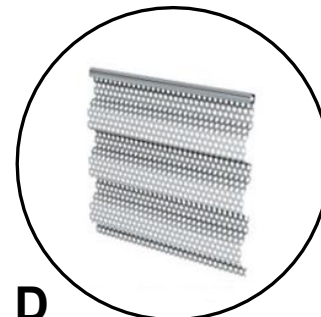
A
RAINSCREEN METAL
PANEL SYSTEM (ACCENT)



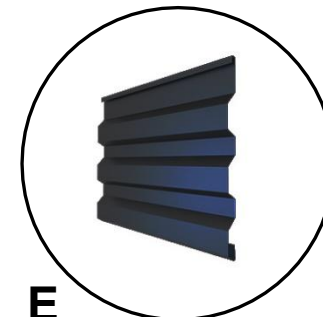
B
RAINSCREEN METAL
PANEL SYSTEM (FIELD)



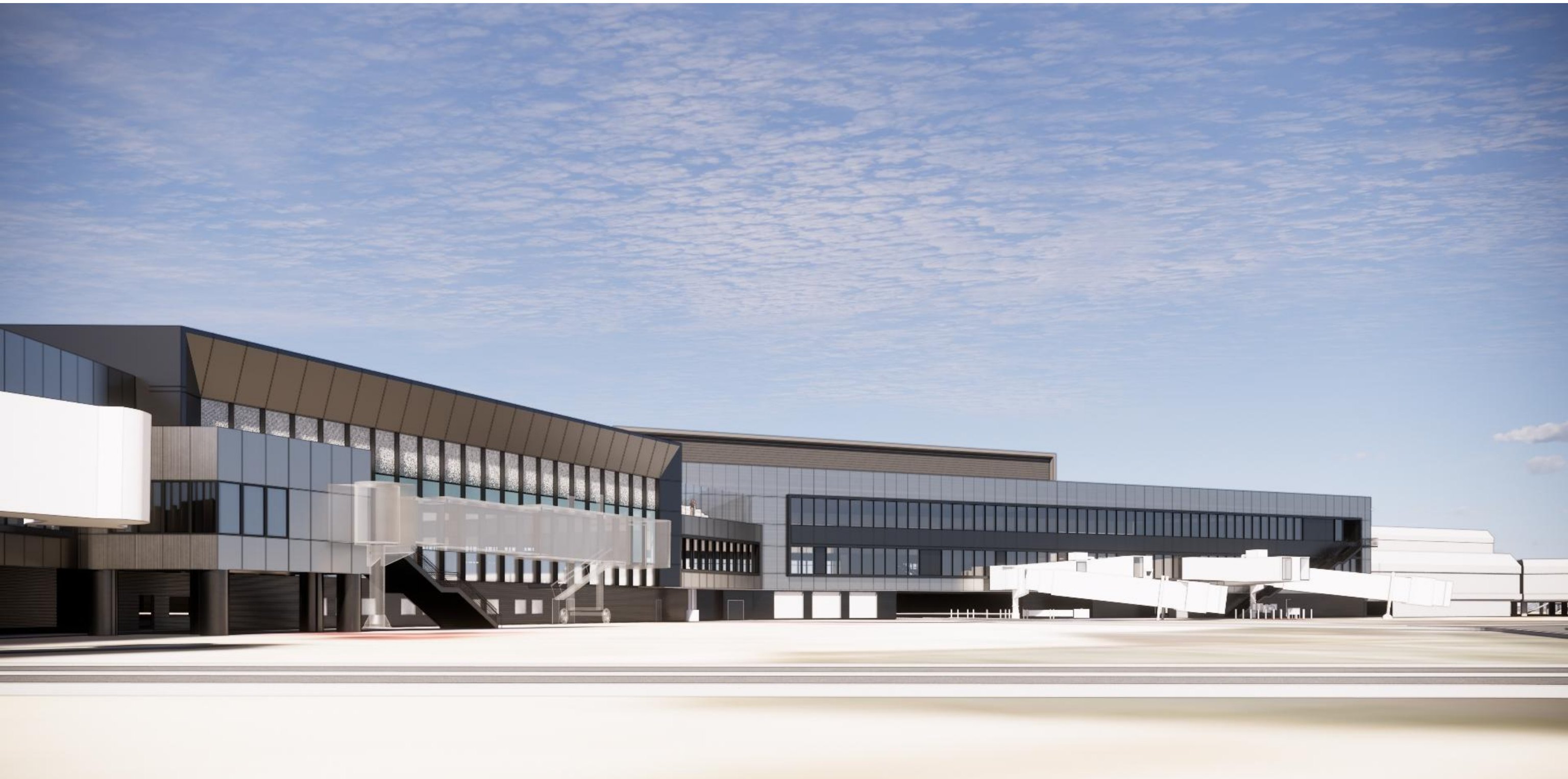
C
LOW-E COATED
GLAZING WITH FRIT

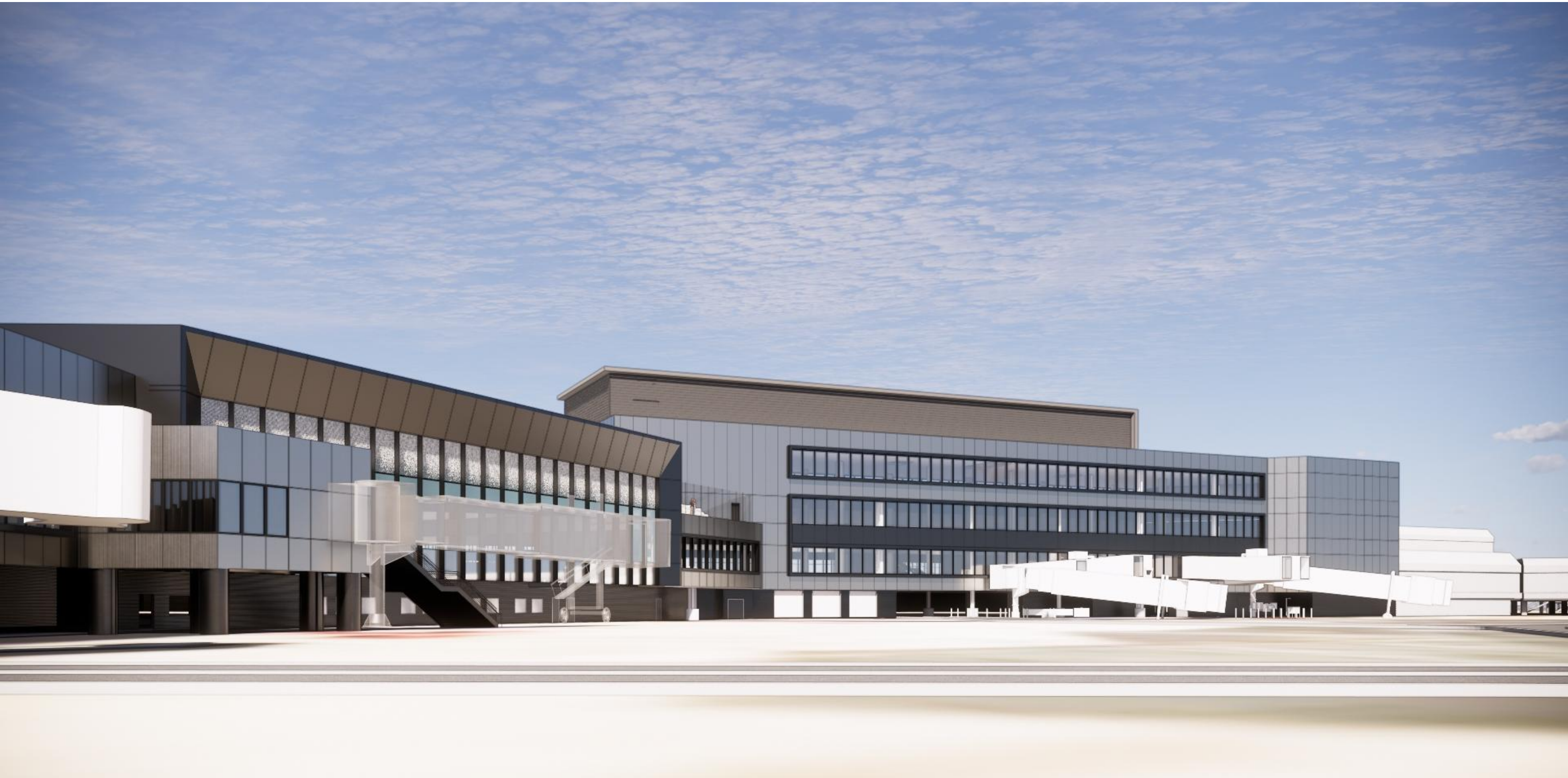


D
PERFORATED
CORRUGATED METAL



E
CORRUGATED METAL
(DARK)

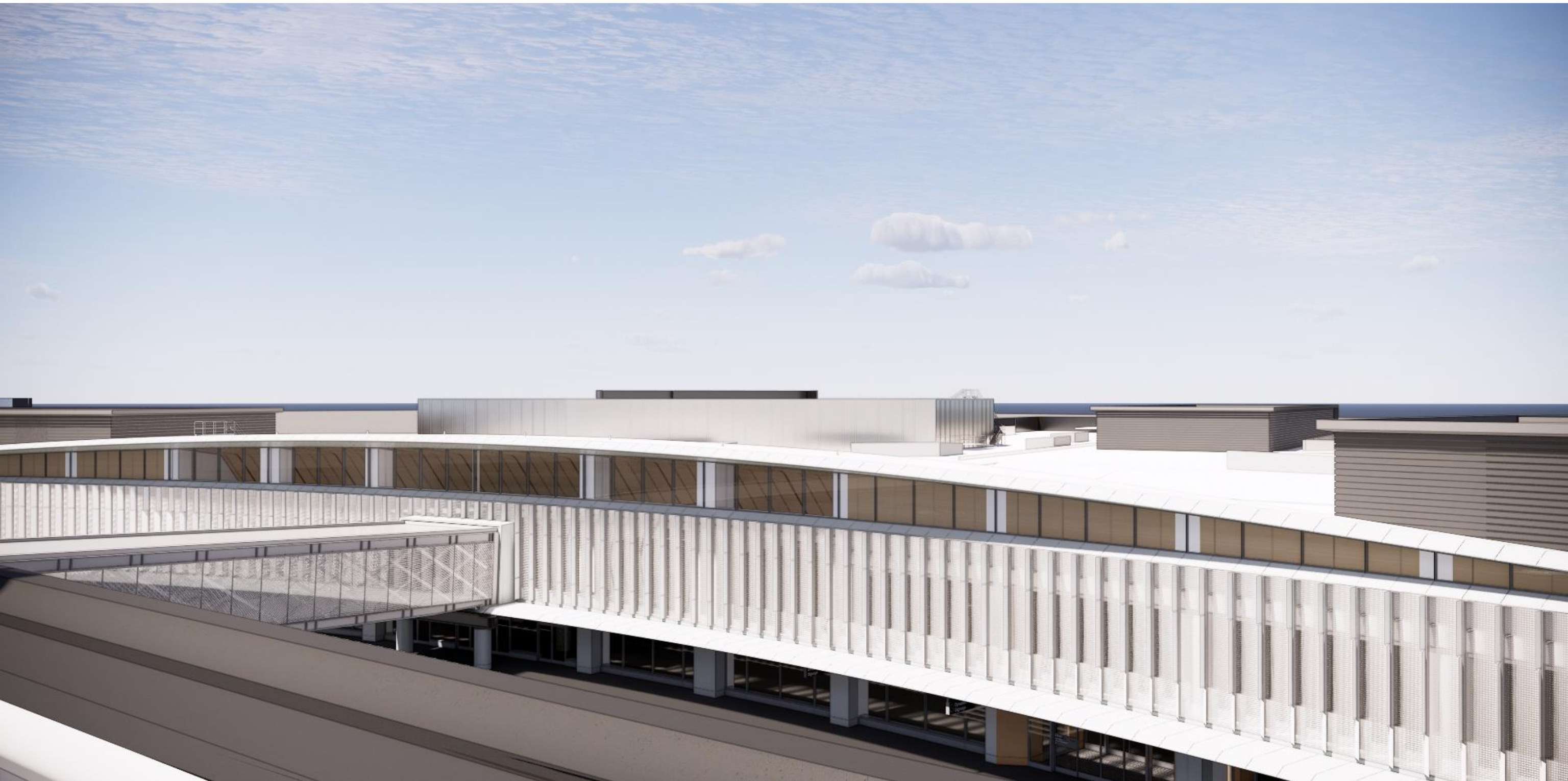


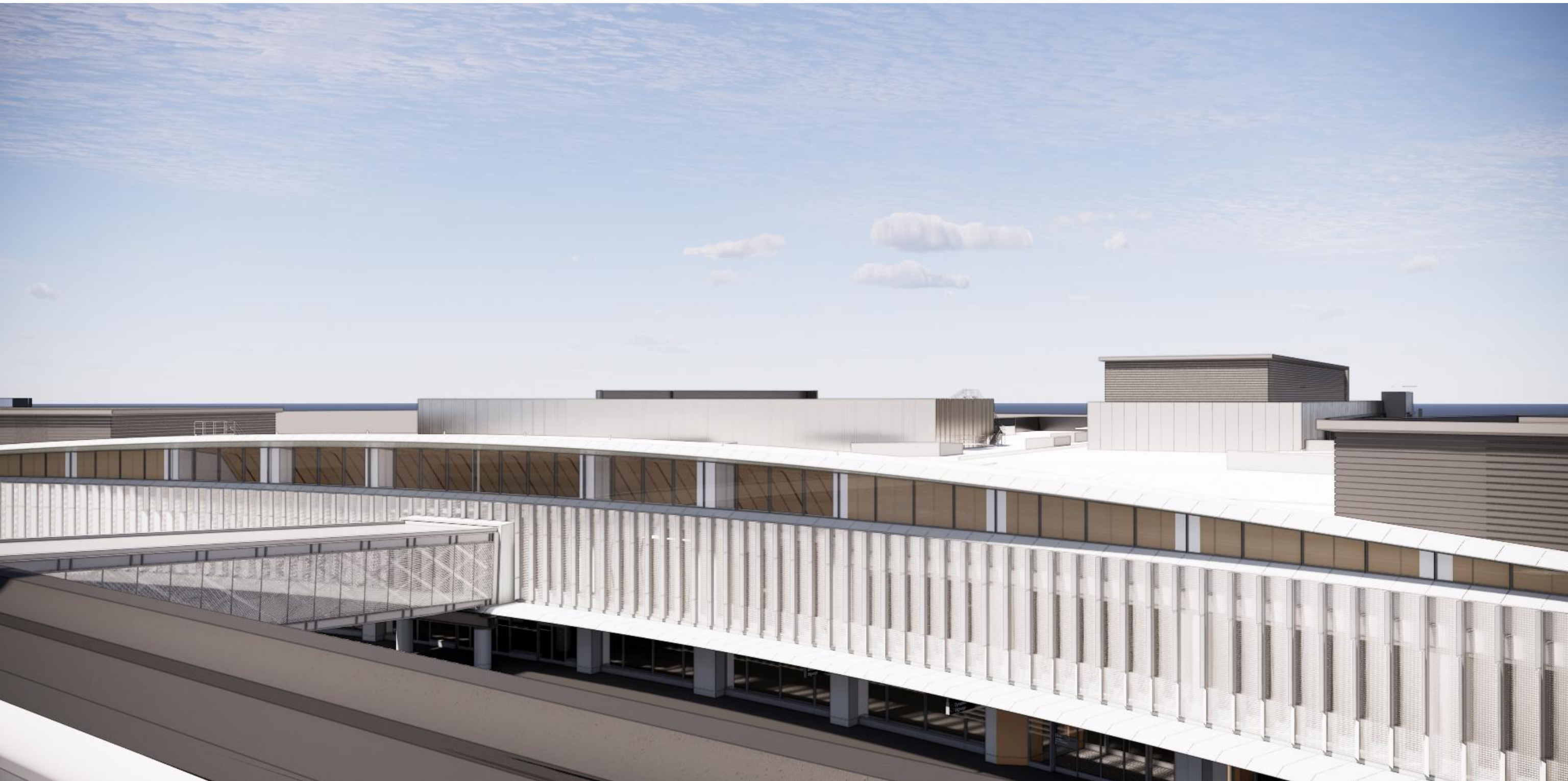












Thank you



SAN FRANCISCO INTERNATIONAL AIRPORT

