

NOVEMBER 2025

Civic Design Review

Terminal 3 West Modernization

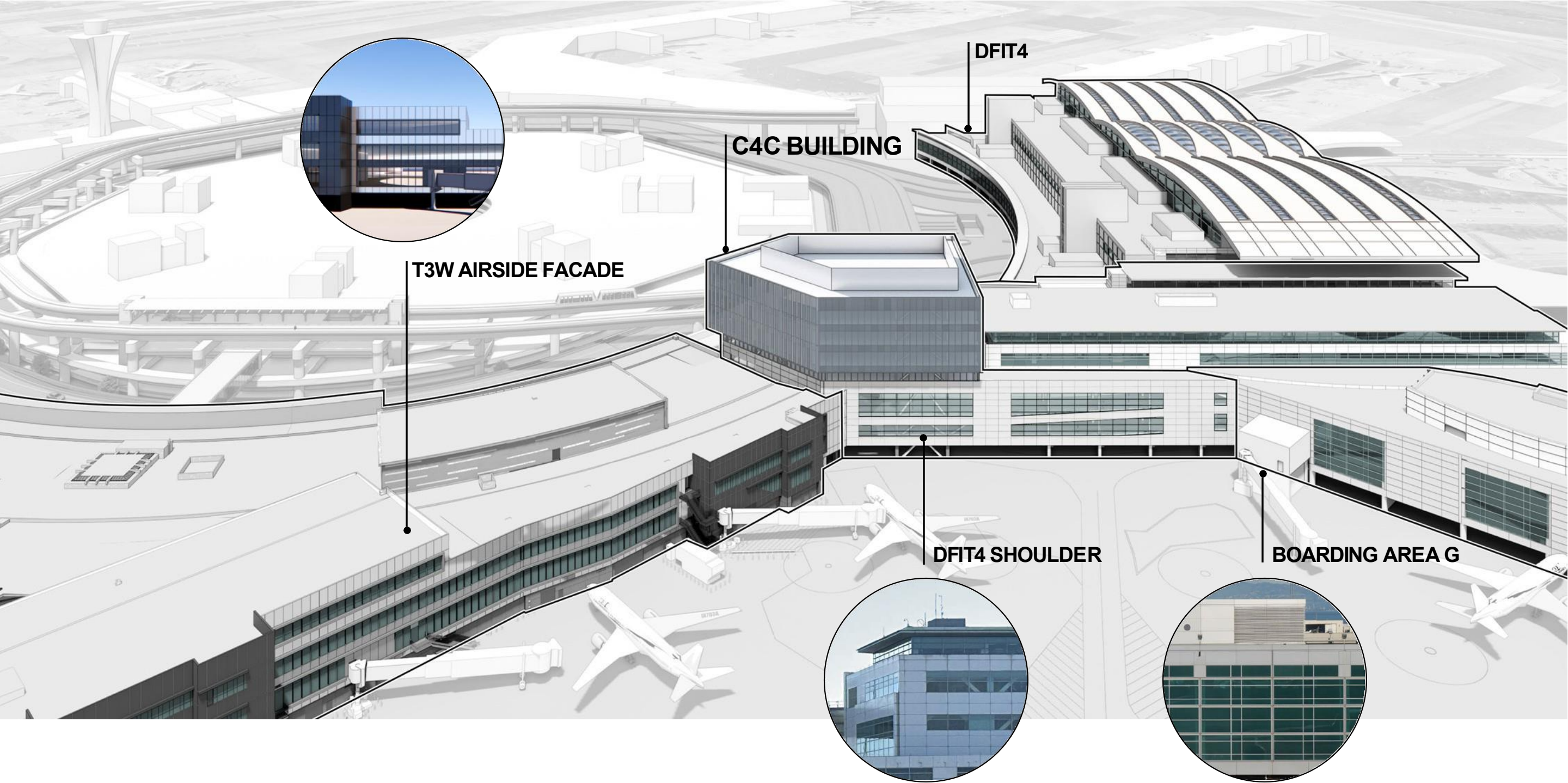
COURTYARD 4 CONNECTOR [C4C]

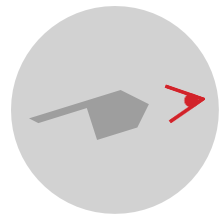
PHASE 3 | CONSTRUCTION DOCUMENTS



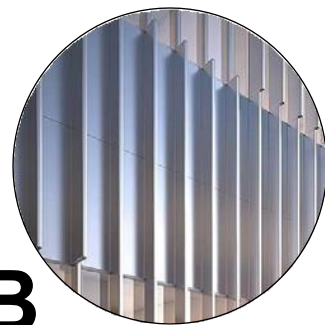
SAN FRANCISCO INTERNATIONAL AIRPORT







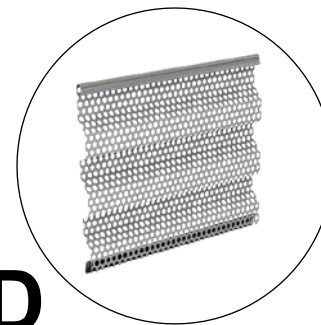
A
LOW-E COATED
GLAZING



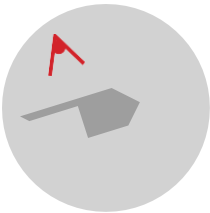
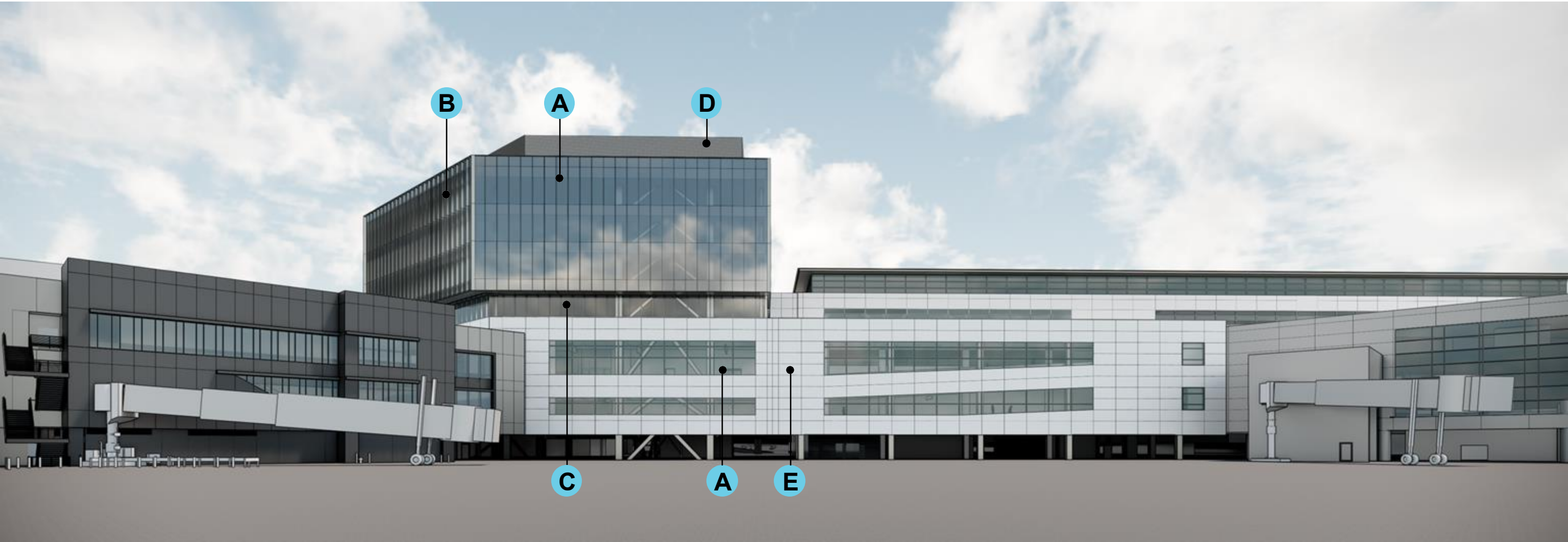
B
PAINTED ALUMINUM
SHADING FINs



C
LOW IRON CLEAR
GLAZING



D
PERFORATED
CORRUGATED METAL



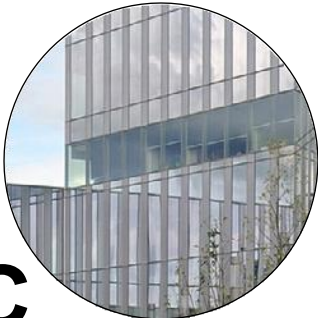
A

LOW-E COATED
GLAZING



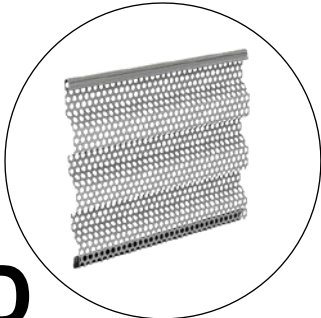
B

PAINTED ALUMINUM
SHADING FINs



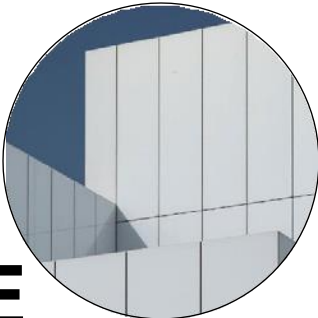
C

LOW IRON CLEAR
GLAZING



D

PERFORATED
CORRUGATED METAL



E

RAINSCREEN METAL
PANEL SYSTEM

Relevant CD Drawings

SFO T3 WEST MODERNIZATION | TURNER | GENSLER | TEF
CIVIC DESIGN REVIEW | PHASE 3
CONSTRUCTION DOCUMENTS

SFO

San Francisco International Airport



Key Map

| NO. | DATE | REVISION DESCRIPTION |
|-----|------------|--|
| 01 | 07/12/2024 | PACKAGE 7B - 100% SCHEMATIC DESIGN |
| 02 | 08/27/2024 | PACKAGE 7B - 50% PRELIMINARY DESIGN |
| 03 | 09/27/2024 | PACKAGE 7B - 50% PRELIMINARY DESIGN |
| 04 | 04/25/2025 | PACKAGE 7B - 50% CONSTRUCTION DOCUMENT |
| 05 | 08/15/2025 | PACKAGE 7B - ISSUE FOR PERMIT |

Turner

300 Frank H Ogawa Plaza, Suite 510
Oakland, CA 94612
415-500-4229

Gensler

220 Montgomery Street, Suite 200
San Francisco, CA 94104
415-433-3700

TEF

1420 Sutter Street
San Francisco, CA 94109
415-381-7918

CONTRACT NO.
10071.76.400

PROJECT TITLE
TERMINAL 3 WEST
MODERNIZATION

SHEET TITLE
PACKAGE 7B - C4C
EXTERIOR BUILDING
ELEVATIONS



APPROVED:

DESIGNED BY: DATE: 08/15/2025

DRAWN BY: SIZE: ARCH-B1

SCALE: As Indicated

SHEET NUMBER

7B-A5.01.01

SHEET NOTES

EXTERIOR GRAPHIC LEGEND

- EMT-11, SEE EXTERIOR MATERIAL LEGEND
- EMT-17, SEE EXTERIOR MATERIAL LEGEND
- EMT-18, SEE EXTERIOR MATERIAL LEGEND
- EMT-19, SEE EXTERIOR MATERIAL LEGEND
- VISION GLASS (REFER TO ENLARGED ELEVATIONS FOR GLASS TYPE DESIGNATION)
- VISION GLASS W/ BIRD SAFE TREATMENT (REFER TO ENLARGED ELEVATIONS FOR GLASS TYPE DESIGNATION)

EXTERIOR WALL TYPE LEGEND

- WT-01: UNITIZED CURTAIN WALL @TOWER, SEE SPEC
- WT-02: UNITIZED CURTAIN WALL @L4 LOUNGE, SEE SPEC
- WT-03: STOREFRONT SYSTEM @PODIUMCONNECTOR, SEE SPEC
- WT-04: ALUM PANEL RAINSCREEN @PODIUMCONNECTOR, SEE SPEC
- WT-05: CORRUGATED ALUM PANEL RAINSCREEN @ADA LEVEL, SEE SPEC
- WT-06: PERFORATED CORRUGATED METAL PANEL RAINSCREEN @PENTHOUSE, SEE SPEC

EXTERIOR MATERIAL LEGEND

- ETM-01: CURTAIN WALL INTERIOR ALUMINUM FINISH @L4-L7, SEE SPEC
- ETM-11: CURTAIN WALL EXTERIOR FIN & METAL PANEL FINISH @ L5-L7, SEE SPEC
- ETM-17: CURTAIN WALL EXTERIOR TRIM FINISH @ L5-L7, SEE SPEC
- ETM-28: CURTAIN WALL INTERIOR ALUMINUM FINISH @L2-L3, SEE SPEC
- ETM-29: CURTAIN WALL SHADOWBOX BACK PANEL @ L4-L7, SEE SPEC
- ETM-28: EXTERIOR ALUMINUM SOFFIT FINISH ABOVE L4, SEE SPEC
- ETM-17: EXTERIOR ALUMINUM PANEL & WINDOW FRAME FINISH @ L2-L3, SEE SPEC
- ETM-18: PERFORATED CORRUGATED ALUMINUM PANEL RAIN SCREEN @ PENTHOUSE, SEE SPEC
- ETM-19: CORRUGATED ALUMINUM PANEL RAIN SCREEN @ GROUND FLOOR, SEE SPEC
- ETM-30: EXTERIOR ALUMINUM PANEL ADJACENT T3W AIRSIDE EXT WALL, FINISH TO MATCH ADJACENT T3W EXT WALL
- EGM-09: INSULATED MID-IRON GLASS UNIT GLAZING (VISION GLASS) @ L5-L7, SEE SPEC
- EGM-07: INSULATED LOW-IRON GLASS UNIT GLAZING (VISION GLASS) @L4, SEE SPEC
- EGM-08: INSULATED MID-IRON GLASS UNIT GLAZING (VISION GLASS) @ L3-L3, SEE SPEC
- EGM-10: INSULATED MID-IRON GLASS UNIT GLAZING W/ BIRD SAFE TREATMENT @L5-L7, SEE SPEC
- EGM-10: CEMENT PLASTER @ (E) PRE-SECURE CONNECTOR WINDOW PATCH, SEE SPEC
- EGM-11: INSULATED LOW-IRON GLASS UNIT GLAZING W/ BIRD SAFE TREATMENT @L4, SEE SPEC
- ELV-01: ARCHITECTURAL STORM RESISTANT LOUVER, FINISH MATCH ADJ EXTERIOR WALL, B.O.D. CS GROUP DO-9614
- ELV-02: ARCHITECTURAL GRILLE BLADE OVER STORM RESISTANT LOUVER, FINISH MATCH ADJ EXTERIOR WALL, B.O.D. CS GROUP RS-0215
- ELV-03: ARCHITECTURAL STORM RESISTANT LOUVER, FINISH MATCH ADJ EXTERIOR WALL, B.O.D. CS GROUP RS-4700

FAA PART 77 SURFACE 163' - 2"

C4C T.O. PENTHOUSE 156' - 3 3/4"

C4C T.O. ROOF 136' - 2 3/4"

C4C L7 120' - 2 3/4"

C4C L6 104' - 2 3/4"

C4C L5 88' - 2 3/4"

C4C L4 70' - 8 3/4"

C4C L3 45' - 2"

C4C L2 27' - 2"

C4C GROUND LEVEL 11' - 0"

03 EXTERIOR ELEVATION - NORTH - AIRSIDE

SCALE: 1/16" = 1'-0"

FAA PART 77 SURFACE 163' - 2"

C4C T.O. PENTHOUSE 156' - 3 3/4"

C4C T.O. ROOF 136' - 2 3/4"

C4C L7 120' - 2 3/4"

C4C L6 104' - 2 3/4"

C4C L5 88' - 2 3/4"

C4C L4 70' - 8 3/4"

C4C L3 45' - 2"

C4C L2 27' - 2"

C4C GROUND LEVEL 11' - 0"

02 EXTERIOR ELEVATION - SOUTH - LANDSIDE

SCALE: 1/16" = 1'-0"

01 EXTERIOR ELEVATION - SOUTHEAST - LANDSIDE

SCALE: 1/16" = 1'-0"

FAA PART 77 SURFACE 163' - 2"

C4C T.O. PENTHOUSE 156' - 3 3/4"

C4C T.O. ROOF 136' - 2 3/4"

C4C L7 120' - 2 3/4"

C4C L6 104' - 2 3/4"

C4C L5 88' - 2 3/4"

C4C L4 70' - 8 3/4"

C4C L3 45' - 2"

C4C L2 27' - 2"

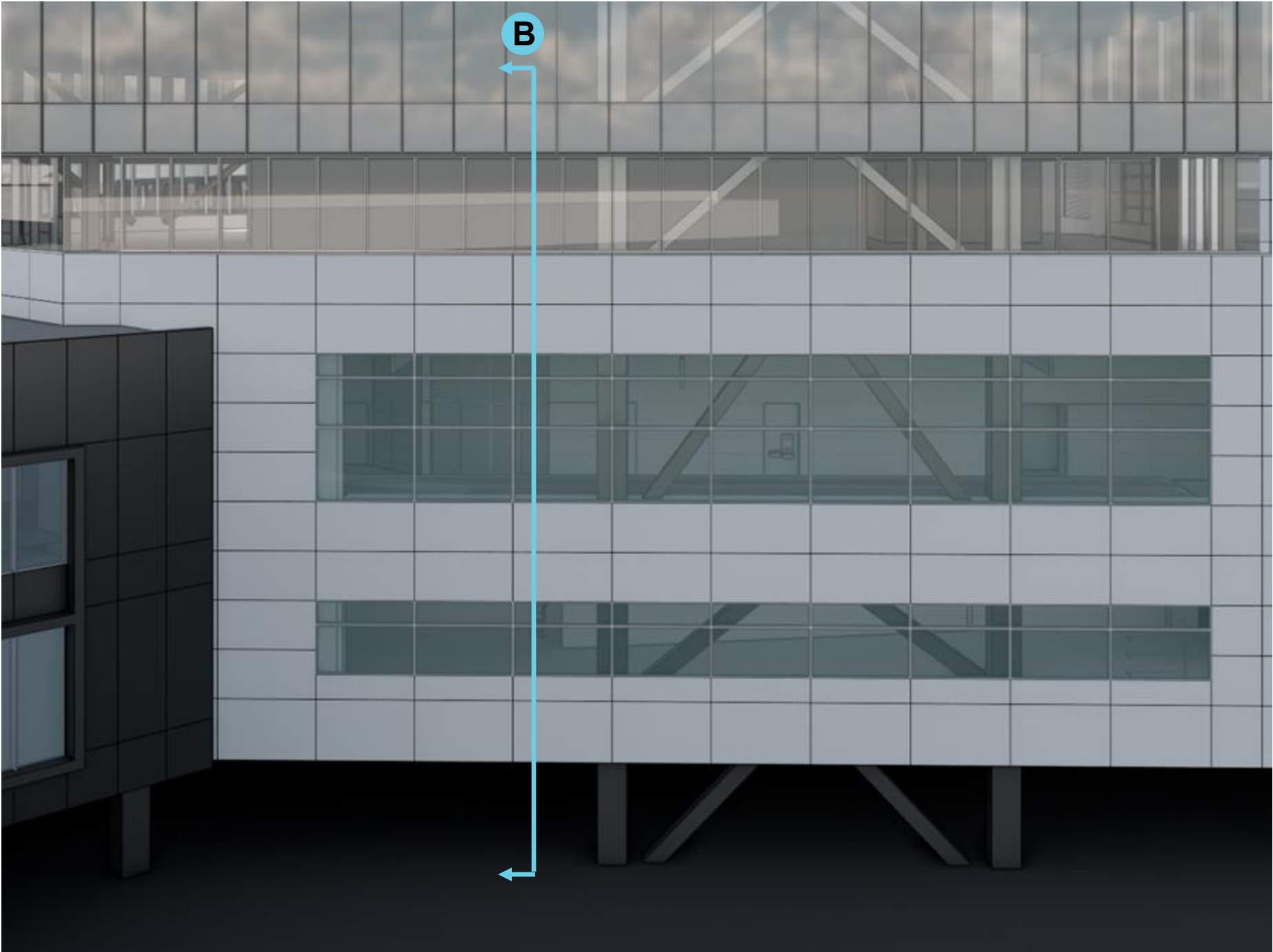
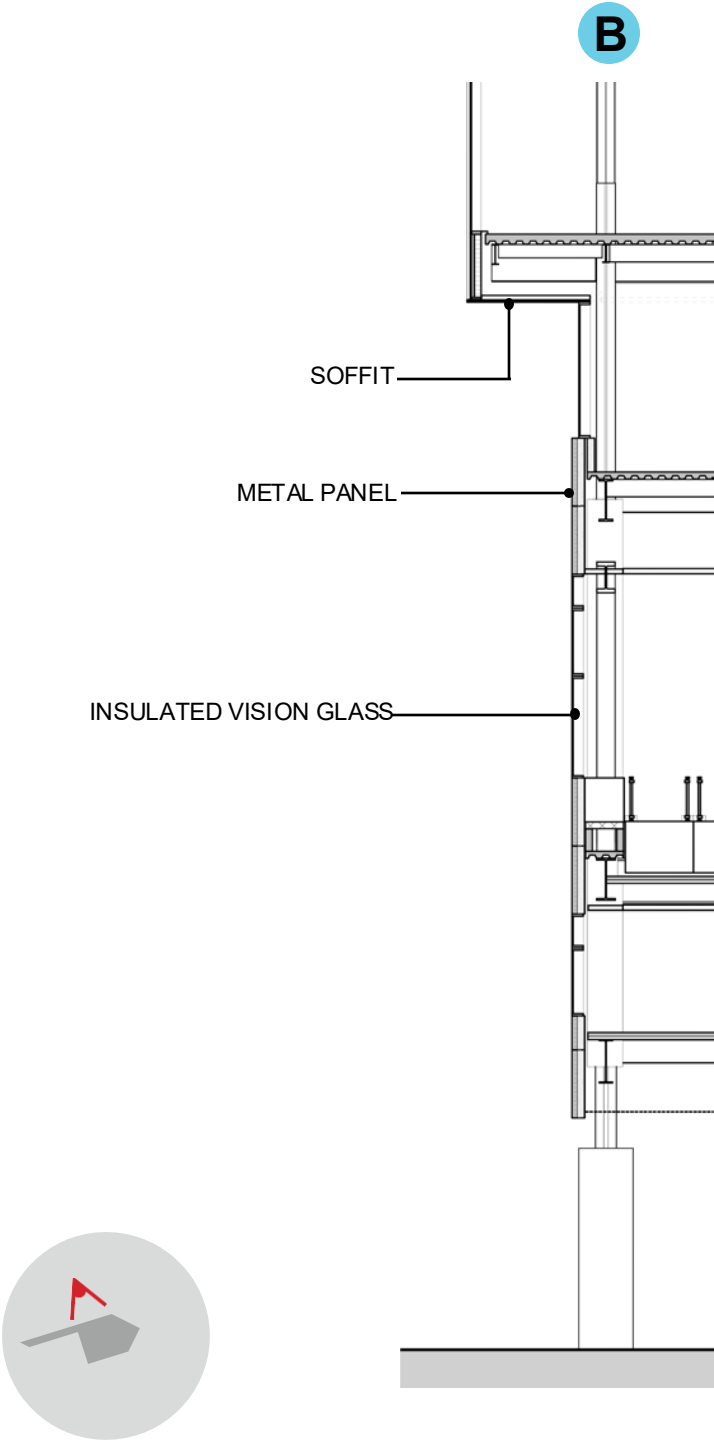
C4C GROUND LEVEL 11' - 0"

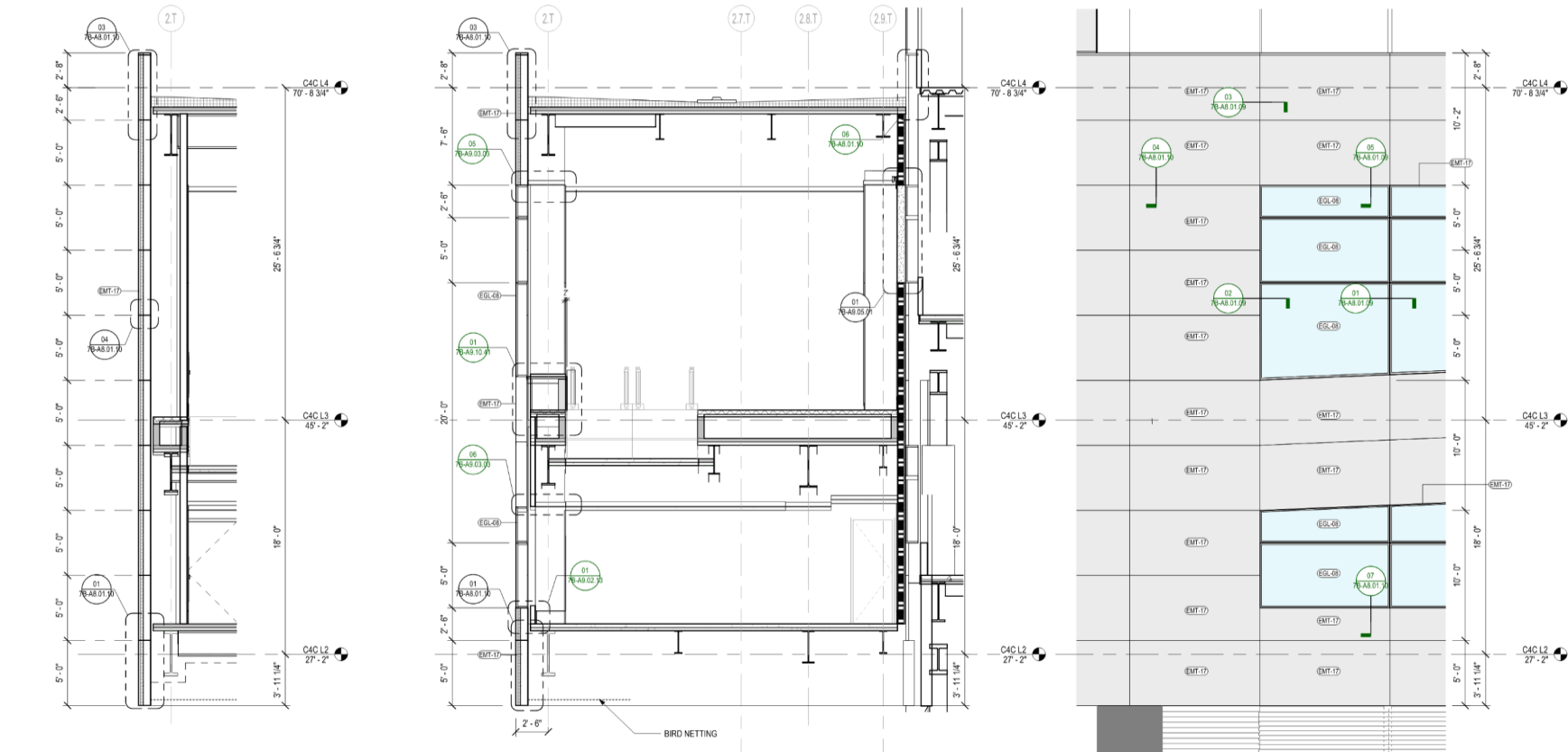
Copyright © 2019-2025 City And County Of San Francisco. These construction documents are the sole property of The City And County Of San Francisco and are protected by the Copyright Act. Any reproduction, publication, or use by any method, in whole or in part, without the express written consent of the San Francisco Airport Commission is prohibited.

If this drawing is not ARCH E1 (02/4/21) NOMINAL SIZE, it has been revised from its original size and scales noted are no longer applicable.

NOVEMBER 2025

5

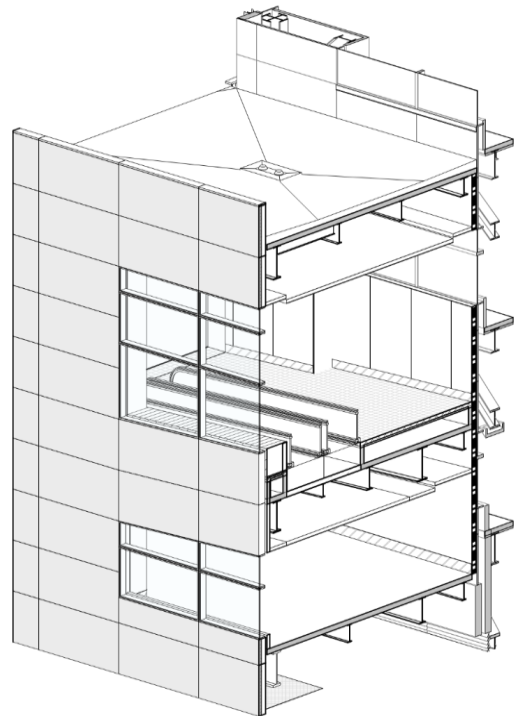




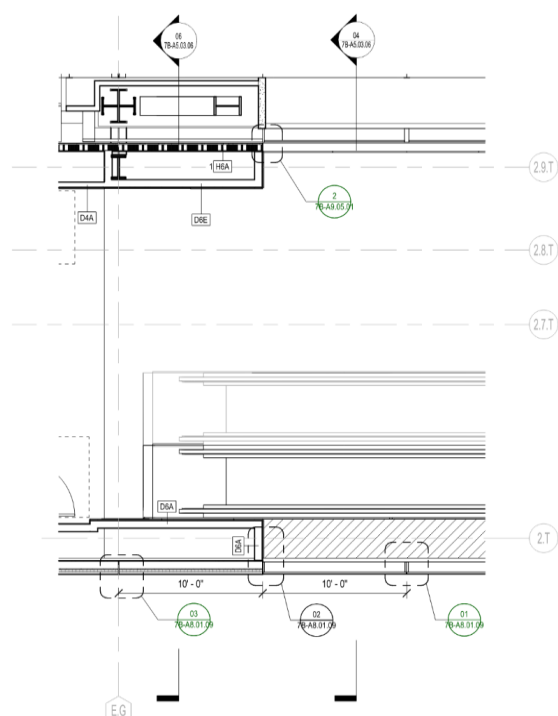
06 WALL SECTION - CONNECTOR - CNTR @ MTL PNL (TYP)
SCALE: 1/4" = 1'-0"

04 WALL SECTION - CONNECTOR - CNTR @ WINDOW (TYP)
SCALE: 1/4" = 1'-0"

03 EXT ELEV - CONNECTOR (TYP)
SCALE: 1/4" = 1'-0"



05 AXON - CONNECTOR (TYP)
SCALE:



01 ENLARGED PLAN - FACADE - L3 CONNECTOR
SCALE: 1/4" = 1'-0"

SHEET NOTES

EXTERIOR GRAPHIC LEGEND

- EMT-11, SEE EXTERIOR MATERIAL LEGEND
- EMT-17, SEE EXTERIOR MATERIAL LEGEND
- EMT-18, SEE EXTERIOR MATERIAL LEGEND
- EMT-19, SEE EXTERIOR MATERIAL LEGEND
- VISION GLASS (REFER TO ENLARGED ELEVATIONS FOR GLASS TYPE DESIGNATION)
- VISION GLASS W/ BIRD SAFE TREATMENT (REFER TO ENLARGED ELEVATIONS FOR GLASS TYPE DESIGNATION)

EXTERIOR WALL TYPE LEGEND

- WT-01: UNITIZED CURTAIN WALL @TOWER, SEE SPEC
- WT-02: UNITIZED CURTAIN WALL @L4 LOUNGE, SEE SPEC
- WT-03: STOREFRONT SYSTEM @PODIUMCONNECTOR, SEE SPEC
- WT-04: ALUM PANEL RAINSCREEN @PODIUMCONNECTOR, SEE SPEC
- WT-05: CORRUGATED ALUM PANEL RAINSCREEN @ADA LEVEL, SEE SPEC
- WT-06: PERFORATED CORRUGATED METAL PANEL RAINSCREEN @PENTHOUSE, SEE SPEC

EXTERIOR MATERIAL LEGEND

- EMT-08: CURTAIN WALL INTERIOR ALUMINUM FINISH @L4-L7, SEE SPEC
- EMT-11: CURTAIN WALL EXTERIOR FIN & METAL PANEL FINISH @ L5-L7, SEE SPEC
- EMT-20: CURTAIN WALL EXTERIOR TRIM FINISH @ L5-L7, SEE SPEC
- EMT-28: CURTAIN WALL INTERIOR ALUMINUM FINISH @L2-L3, SEE SPEC
- EMT-29: CURTAIN WALL SHADOWBOX BACK PANEL @ L4-L7, SEE SPEC
- EMT-28: EXTERIOR ALUMINUM SOFFIT FINISH ABOVE L4, SEE SPEC
- EMT-17: EXTERIOR ALUMINUM PANEL & WINDOW FRAME FINISH @ L2-L3, SEE SPEC
- EMT-18: PERFORATED CORRUGATED ALUMINUM PANEL RAIN SCREEN @ PENTHOUSE, SEE SPEC
- EMT-19: CORRUGATED ALUMINUM PANEL RAIN SCREEN @ GROUND FLOOR, SEE SPEC
- EMT-30: EXTERIOR ALUMINUM PANEL ADJACENT T3W AIRSIDE EXT WALL, FINISH TO MATCH ADJACENT T3W EXT WALL
- EGL-09: INSULATED MID-IRON GLASS UNIT GLAZING (VISION GLASS) @ L5-L7, SEE SPEC
- EGL-07: INSULATED LOW-IRON GLASS UNIT GLAZING (VISION GLASS) @L4, SEE SPEC
- EGL-08: INSULATED MID-IRON GLASS UNIT GLAZING (VISION GLASS) @ L3-L3, SEE SPEC
- EGL-10: INSULATED MID-IRON GLASS UNIT GLAZING W/ BIRD SAFE TREATMENT @L5-L7, SEE SPEC
- EGL-10: CEMENT PLASTER @ (B) PRE-SECURE CONNECTOR WINDOW PATCH, SEE SPEC
- EGL-11: INSULATED LOW-IRON GLASS UNIT GLAZING W/ BIRD SAFE TREATMENT @L4, SEE SPEC
- ELV-01: ARCHITECTURAL STORM RESISTANT LOUVER, FINISH MATCH ADJ EXTERIOR WALL, B.O.D. CS GROUP DC-9614
- ELV-02: ARCHITECTURAL GRILLE BLADE OVER STORM RESISTANT LOUVER, FINISH MATCH ADJ EXTERIOR WALL, S.O.D. CS GROUP RS-0215
- ELV-03: ARCHITECTURAL STORM RESISTANT LOUVER, FINISH MATCH ADJ EXTERIOR WALL, B.O.D. CS GROUP RS-4700

SFO

San Francisco International Airport

| NO. | DATE | REVISION DESCRIPTION |
|-----|------------|--|
| 01 | 07/12/2024 | PACKAGE 7B - 100% SCHEMATIC DESIGN |
| 02 | 08/27/2024 | PACKAGE 7B - 50% PRELIMINARY DESIGN |
| 03 | 04/25/2025 | PACKAGE 7B - 50% CONSTRUCTION DOCUMENT |
| 04 | 08/15/2025 | PACKAGE 7B - ISSUE FOR PERMIT |

Turner

300 Frank H Ogawa Plaza, Suite 510
Oakland, CA 94612
415-500-4229

Gensler

220 Montgomery Street, Suite 200
San Francisco, CA 94104
415-433-3700

TEF

1420 Sutter Street
San Francisco, CA 94109
415-381-7918

CONTRACT NO.
10071.76.400

PROJECT TITLE
TERMINAL 3 WEST
MODERNIZATION
PACKAGE 7B - C4C

SHEET TITLE
FACADE SYSTEMS -
CONNECTOR WT-03/04

APPROVED:
APPROVED:
DESIGNED BY:
DRAWN BY:
SCALE:
SHEET NUMBER

CHECKED BY:
DATE:
10/15/2025
1/2
ARCH-01

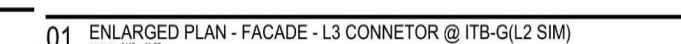
7B-A5.03.06

Relevant CD Drawings

SFO T3 WEST MODERNIZATION | TURNER | GENSLER | TEF
CIVIC DESIGN REVIEW | PHASE 3
CONSTRUCTION DOCUMENTS

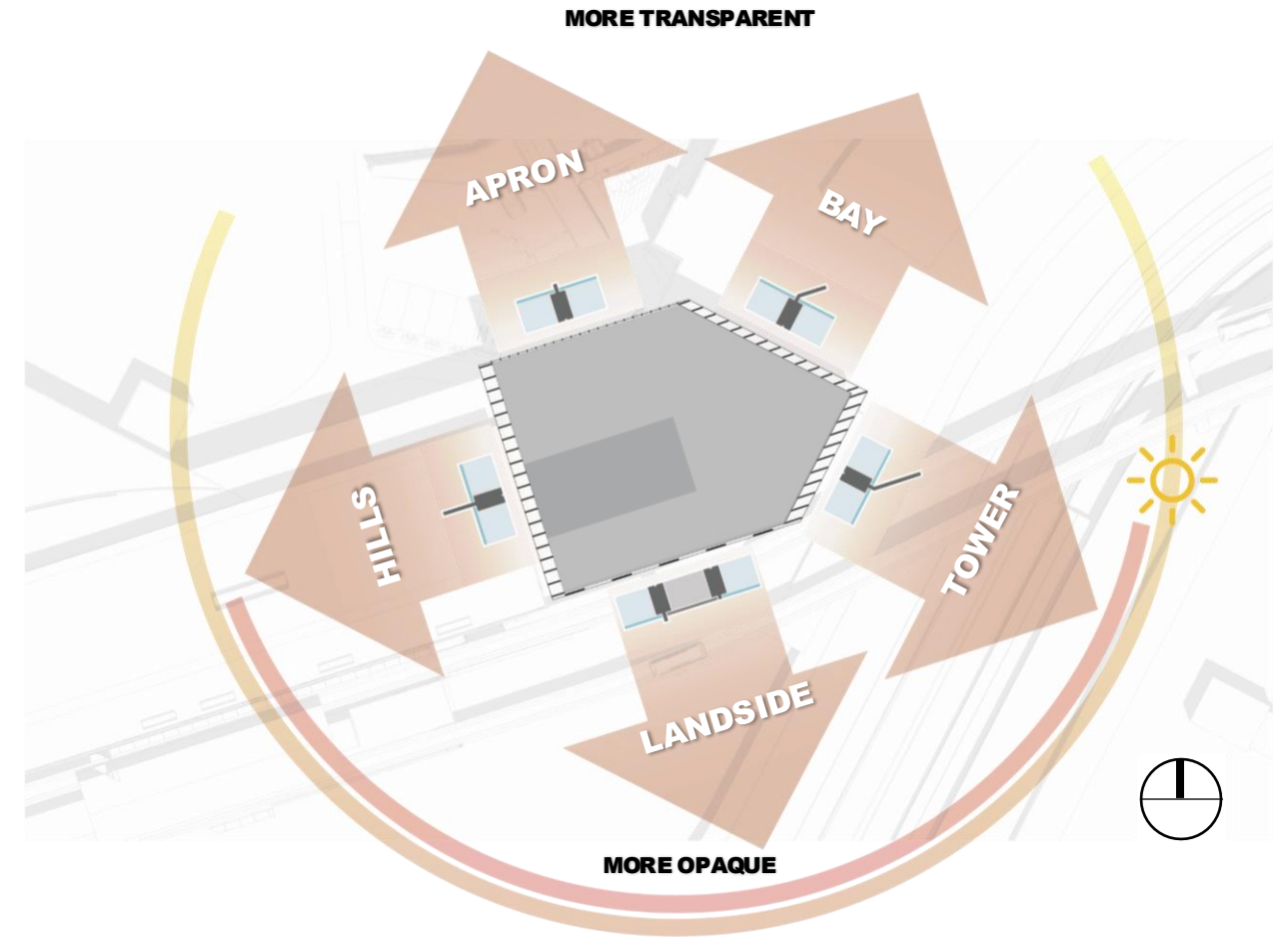
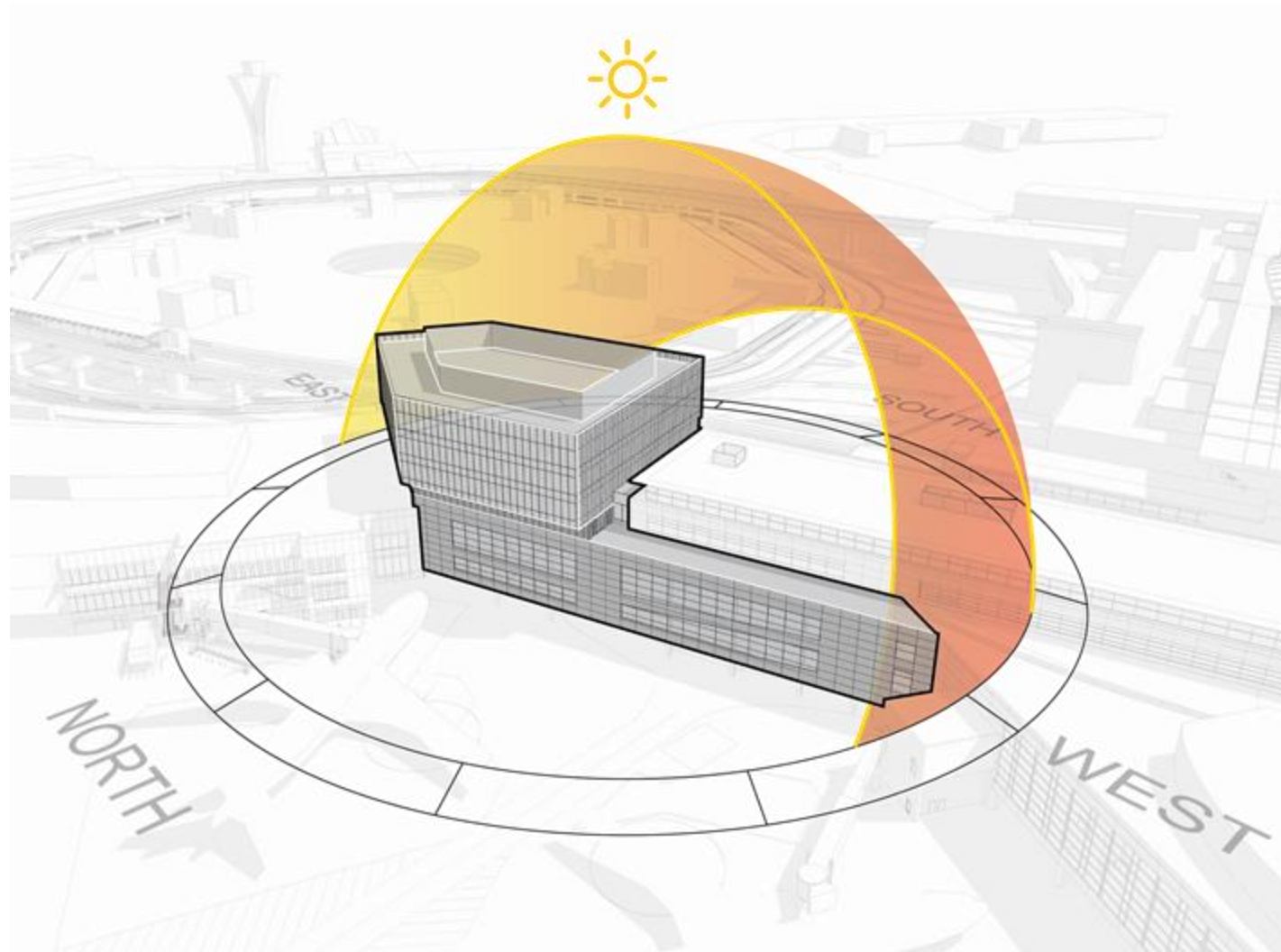
NOVEMBER 2025

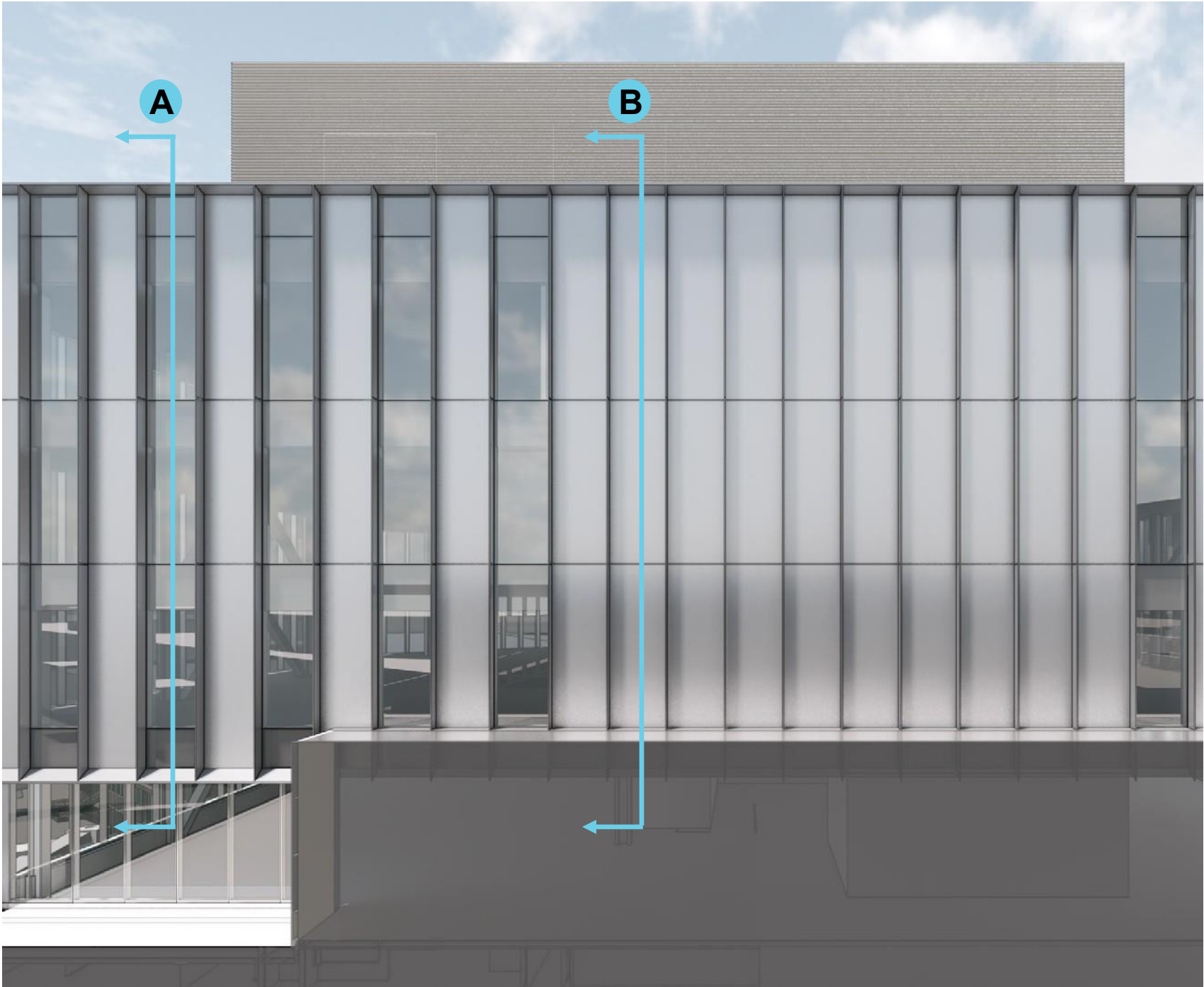
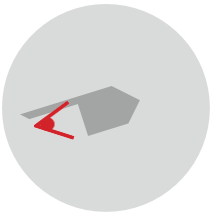
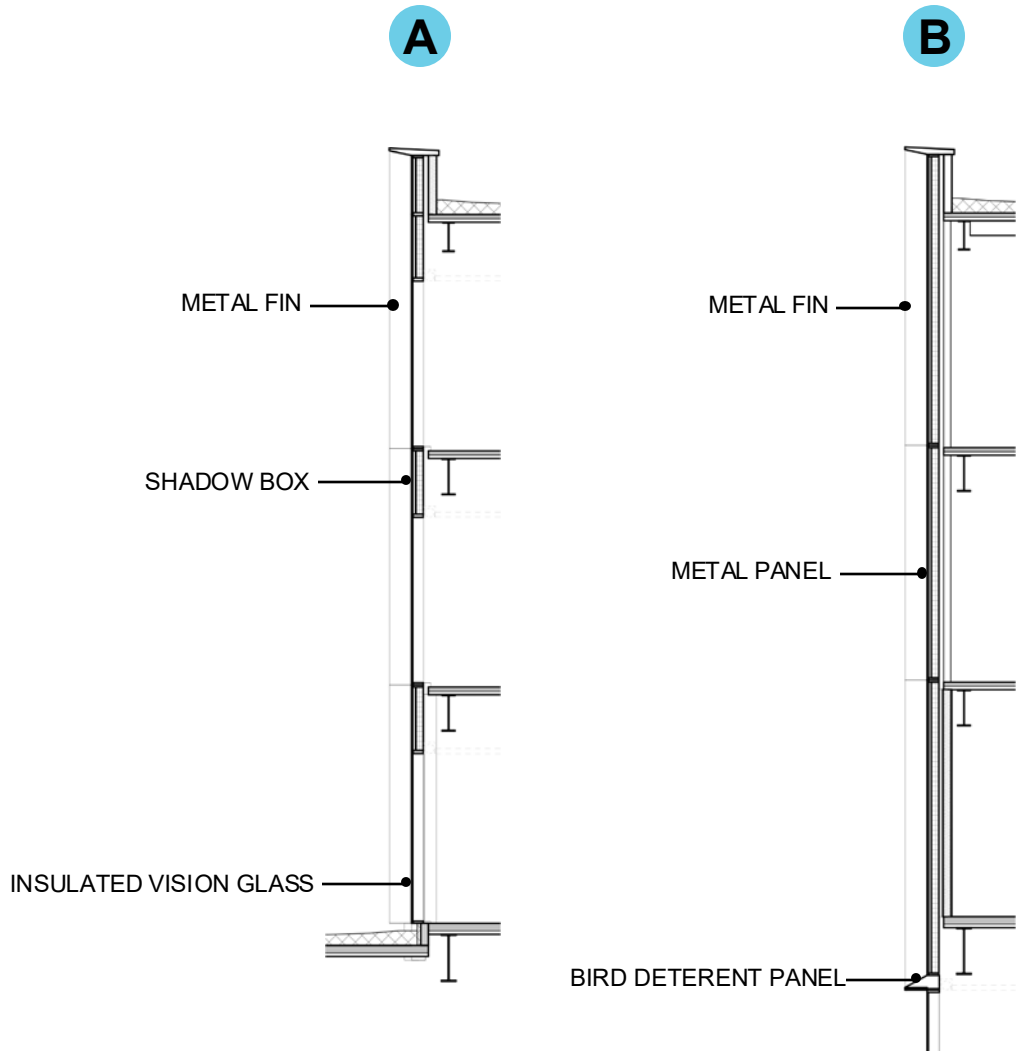
7

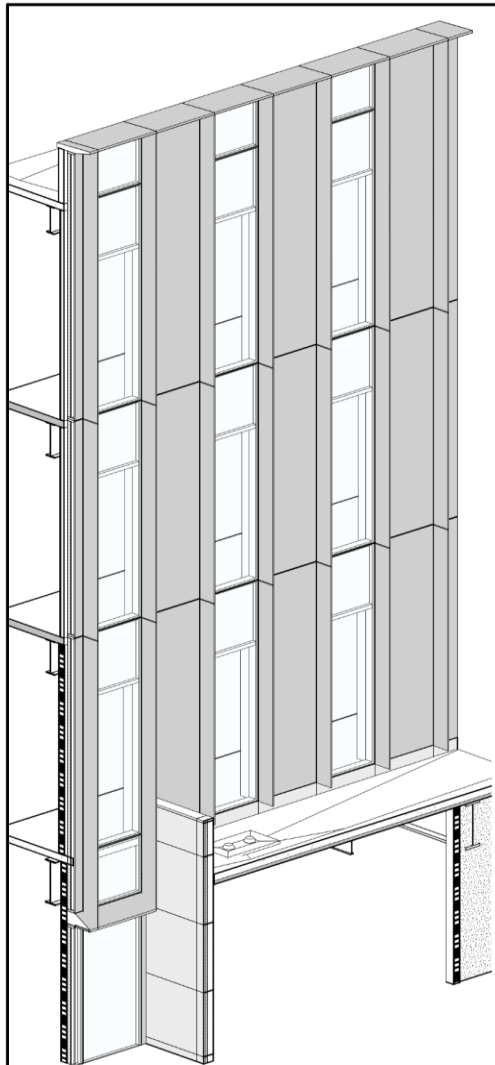


| | |
|--------------------|---|
| 20006 17-03-17 288 | CH E DIVU A student Power (072005) 650 TBM Medium vol (0717 76 400 TBM 400 000 010 00 |
|--------------------|---|

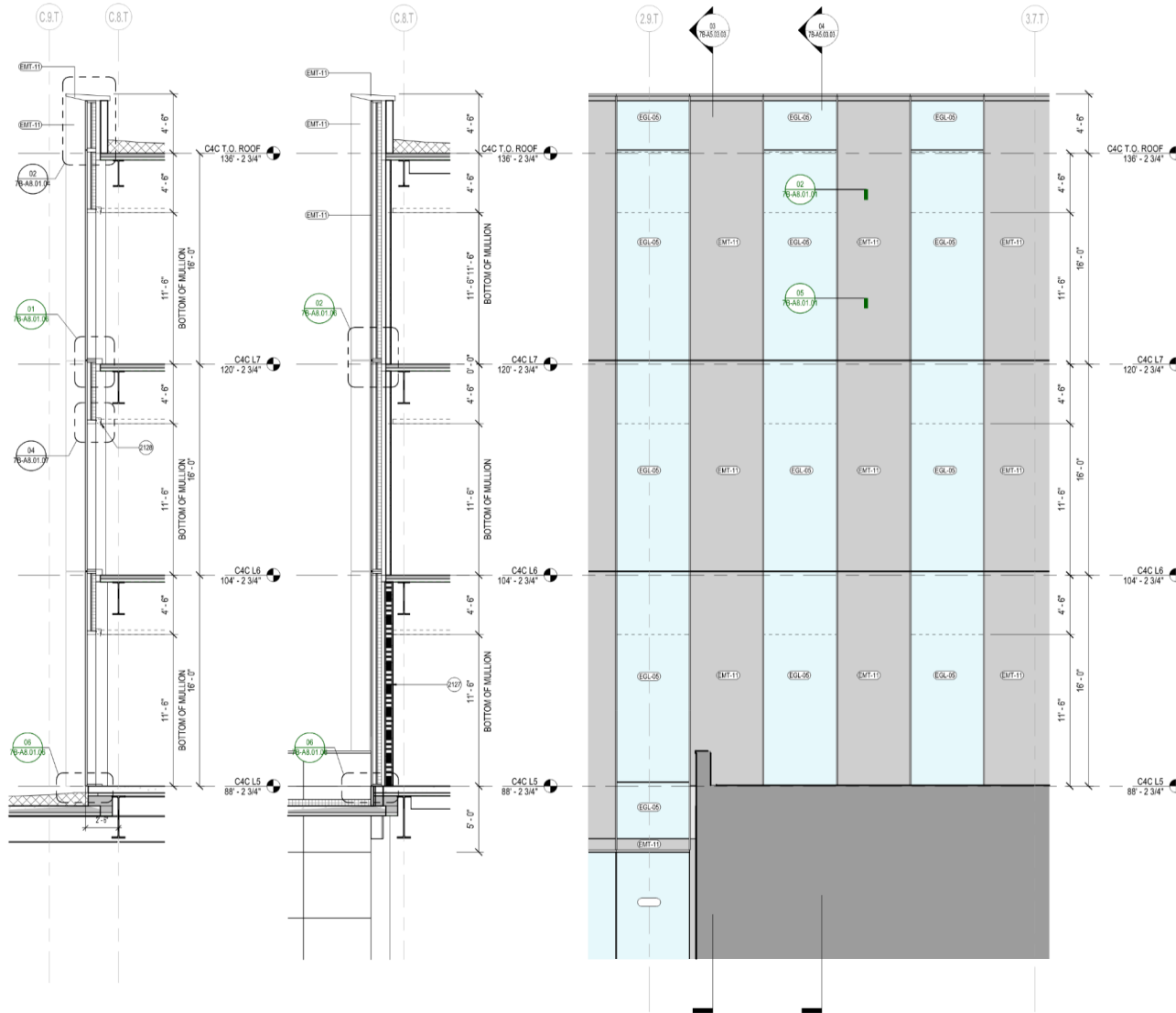
8







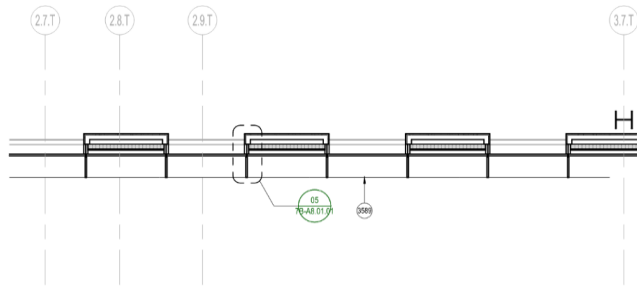
05 AXON - WEST FACADE
SCALE: 1/4" = 1'-0"



04 SECTION - WEST @GALZING
SCALE: 1/4" = 1'-0"

03 SECTION - WEST @ MTL PNL
SCALE: 1/4" = 1'-0"

02 ENLARGED ELEVATION - WEST FACADE
SCALE: 1/4" = 1'-0"



01 ENLARGED PLAN - FACADE - WEST
SCALE: 1/4" = 1'-0"

SHEET NOTES

- 2127 INTERIOR PARTITION, SEE WALL TYPE TAG AND PARTITION SCHEDULE, TYP.
2128 CEILING AND SHADE BY OTHERS, TYP.
3889 HORIZONTAL EDGE/FIN BELOW, TYP.

EXTERIOR GRAPHIC LEGEND

- EMT-11, SEE EXTERIOR MATERIAL LEGEND
EMT-17, SEE EXTERIOR MATERIAL LEGEND
EMT-18, SEE EXTERIOR MATERIAL LEGEND
EMT-19, SEE EXTERIOR MATERIAL LEGEND
VISION GLASS (REFER TO ENLARGED ELEVATIONS FOR GLASS TYPE DESIGNATION)
VISION GLASS W/ BIRD SAFE TREATMENT (REFER TO ENLARGED ELEVATIONS FOR GLASS TYPE DESIGNATION)

EXTERIOR WALL TYPE LEGEND

- WT-01: UNITIZED CURTAIN WALL @TOWER, SEE SPEC
WT-02: UNITIZED CURTAIN WALL @L4 LOUNGE, SEE SPEC
WT-03: STOREFRONT SYSTEM @PODIUMCONNECTOR, SEE SPEC
WT-04: ALUM PANEL RAINSCREEN @PODIUMCONNECTOR, SEE SPEC
WT-05: CORRUGATED ALUM PANEL RAINSCREEN @ADA LEVEL, SEE SPEC
WT-06: PERFORATED CORRUGATED METAL PANEL RAINSCREEN @PENTHOUSE, SEE SPEC

EXTERIOR MATERIAL LEGEND

- EMT-08: CURTAIN WALL INTERIOR ALUMINUM FINISH @L4-L7, SEE SPEC
EMT-11: CURTAIN WALL EXTERIOR FIN & METAL PANEL FINISH @ L5-L7, SEE SPEC
EMT-20: CURTAIN WALL EXTERIOR TRIM FINISH @ L5-L7, SEE SPEC
EMT-28: CURTAIN WALL INTERIOR ALUMINUM FINISH @L2-L3, SEE SPEC
EMT-29: CURTAIN WALL SHADOWBOX BACK PANEL @ L4-L7, SEE SPEC
EMT-28: EXTERIOR ALUMINUM SOFFIT FINISH ABOVE L4, SEE SPEC
EMT-17: EXTERIOR ALUMINUM PANEL & WINDOW FRAME FINISH @ L2-L3, SEE SPEC
EMT-18: PERFORATED CORRUGATED ALUMINUM PANEL RAIN SCREEN @ PENTHOUSE, SEE SPEC
EMT-19: CORRUGATED ALUMINUM PANEL RAIN SCREEN @ GROUND FLOOR, SEE SPEC
EMT-30: EXTERIOR ALUMINUM PANEL ADJACENT TOWER AIRSIDE EXT WALL, FINISH TO MATCH ADJACENT TOWER EXT WALL
EGL-09: INSULATED MID-IRON GLASS UNIT GLAZING (VISION GLASS) @ L5-L7, SEE SPEC
EGL-07: INSULATED LOW-IRON GLASS UNIT GLAZING (VISION GLASS) @L4, SEE SPEC
EGL-08: INSULATED MID-IRON GLASS UNIT GLAZING (VISION GLASS) @ L3-L3, SEE SPEC
EGL-10: INSULATED MID-IRON GLASS UNIT GLAZING W/ BIRD SAFE TREATMENT @L5-L7, SEE SPEC
EGL-10: CEMENT PLASTER @ (B) PRE-SECURE CONNECTOR WINDOW PATCH, SEE SPEC
EGL-11: INSULATED LOW-IRON GLASS UNIT GLAZING W/ BIRD SAFE TREATMENT @L4, SEE SPEC
ELV-01: ARCHITECTURAL STORM RESISTANT LOUVER, FINISH MATCH ADJ EXTERIOR WALL, B.O.D. CS GROUP DO-9614
ELV-02: ARCHITECTURAL GRILLE BLADE OVER STORM RESISTANT LOUVER, FINISH MATCH ADJ EXTERIOR WALL, S.O.D. CS GROUP RS-0215
ELV-03: ARCHITECTURAL STORM RESISTANT LOUVER, FINISH MATCH ADJ EXTERIOR WALL, B.O.D. CS GROUP RS-4700

SFO
San Francisco International Airport

| NO. | DATE | REVISION DESCRIPTION |
|-----|------------|--|
| 1 | 07/17/2024 | PACKAGE 7B - 100% SCHEMATIC DESIGN |
| 2 | 08/27/2024 | PACKAGE 7B - 50% DESIGN DEVELOPMENT |
| 3 | 09/27/2024 | PACKAGE 7B - 50% CONSTRUCTION DOCUMENT |
| 4 | 09/15/2025 | PACKAGE 7B - 50% CONSTRUCTION DOCUMENT |
| 5 | 09/15/2025 | PACKAGE 7B - 50% CONSTRUCTION DOCUMENT |

Turner
300 Frank H Ogawa Plaza, Suite 510
Oakland, CA 94612
415-508-4229

Gensler
220 Montgomery Street, Suite 200
San Francisco, CA 94104
415-433-3700

TEF
1420 Sutter Street
San Francisco, CA 94109
415-381-7918

CONTRACT NO.
PROJECT TITLE
SHEET TITLE

10071.76.400
TERMINAL 3 WEST
MODERNIZATION
PACKAGE 7B - C4C
FACADE SYSTEMS - TOWER
WT-01 WEST

SEAL

APPROVED:
DESIGNED BY:
DRAWN BY:
SCALE:
SHEET NUMBER

APPROVED:
CHECKED BY:
DATE:
SCALE:
SHEET NUMBER

7B-A5.03.03

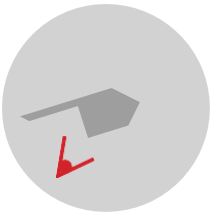
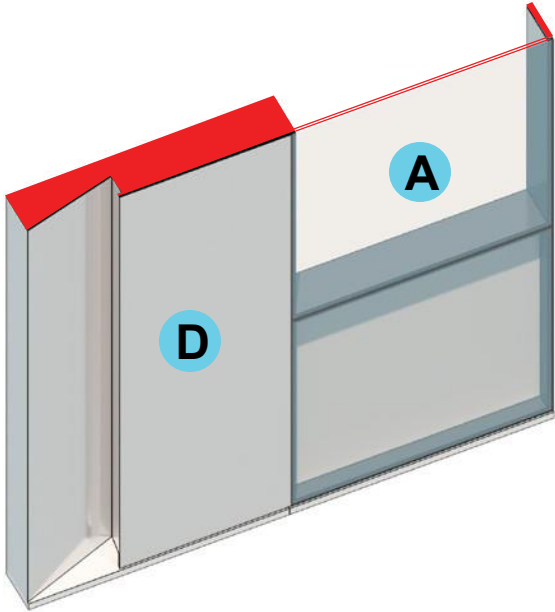
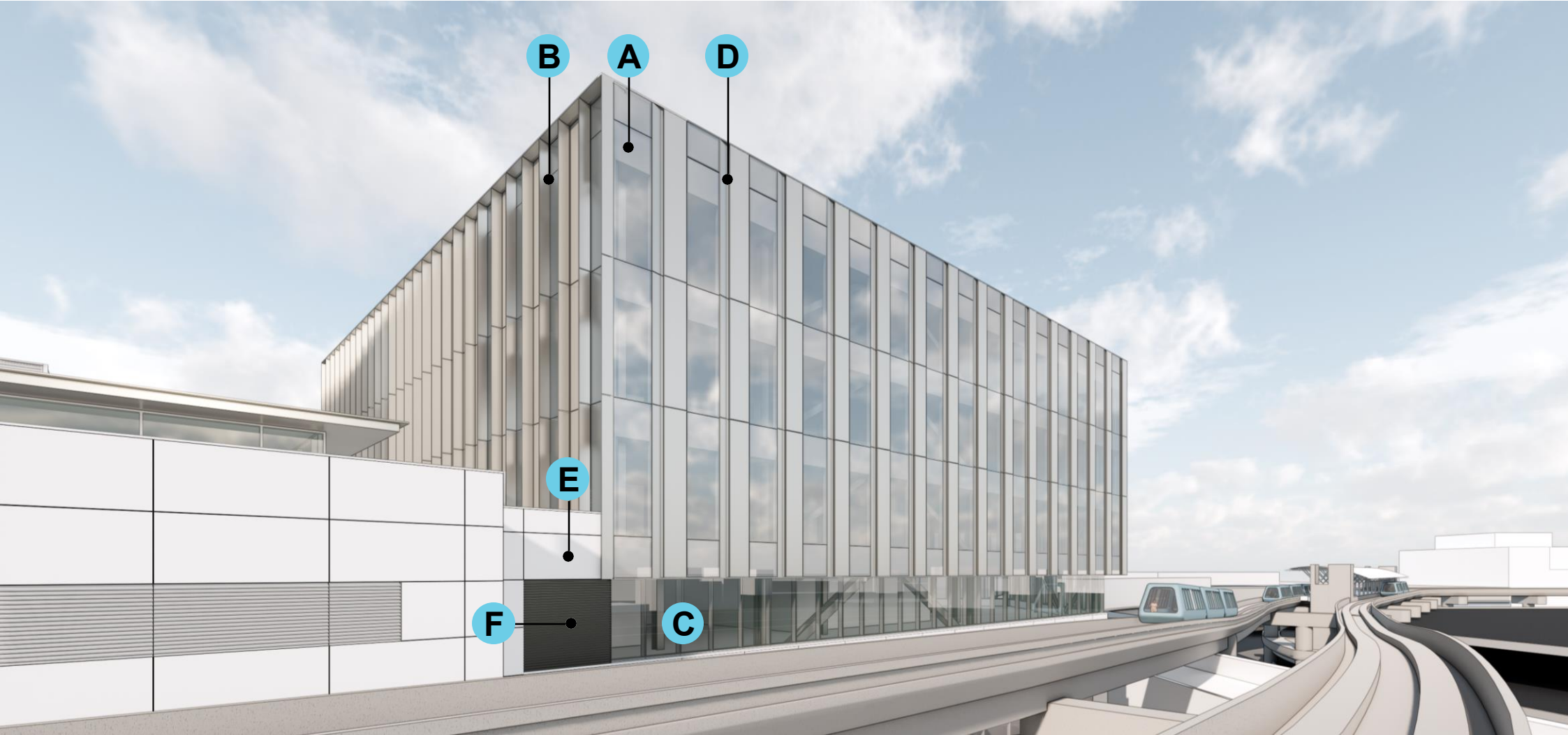
FILE PATH: \\autodesk\documents\7B_A5_03\3889\turner\gms\7B_A5_03_03.dwg, 7B_A5_03.dwg, C4C-A

Copyright © 2019-2025 City And County Of San Francisco. These construction documents are the sole property of The City And County Of San Francisco and are protected by the Copyright Act. Any reproduction, publication, or use by any method, in whole or in part, without the express written consent of the San Francisco Airport Commission is prohibited.

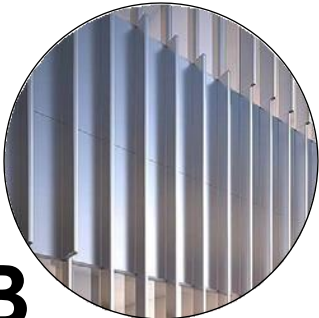
If this drawing is not ARCH E1 (30"x42") NOMINAL SIZE, it has been revised from its original size and scales noted are no longer applicable.

NOVEMBER 2025

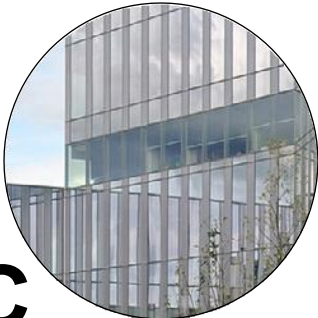
11



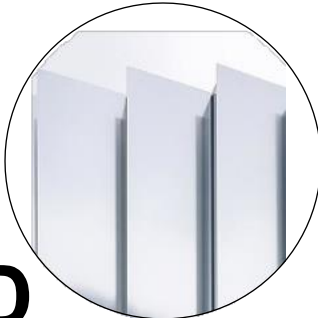
A
LOW-E COATED
GLAZING



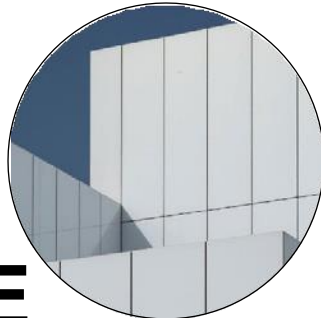
B
PAINTED ALUMINUM
SHADING FINs



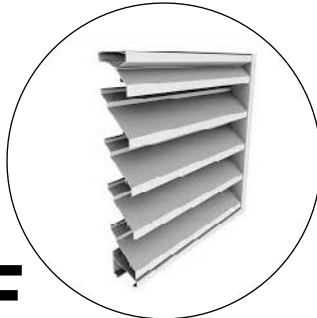
C
LOW IRON CLEAR
GLAZING



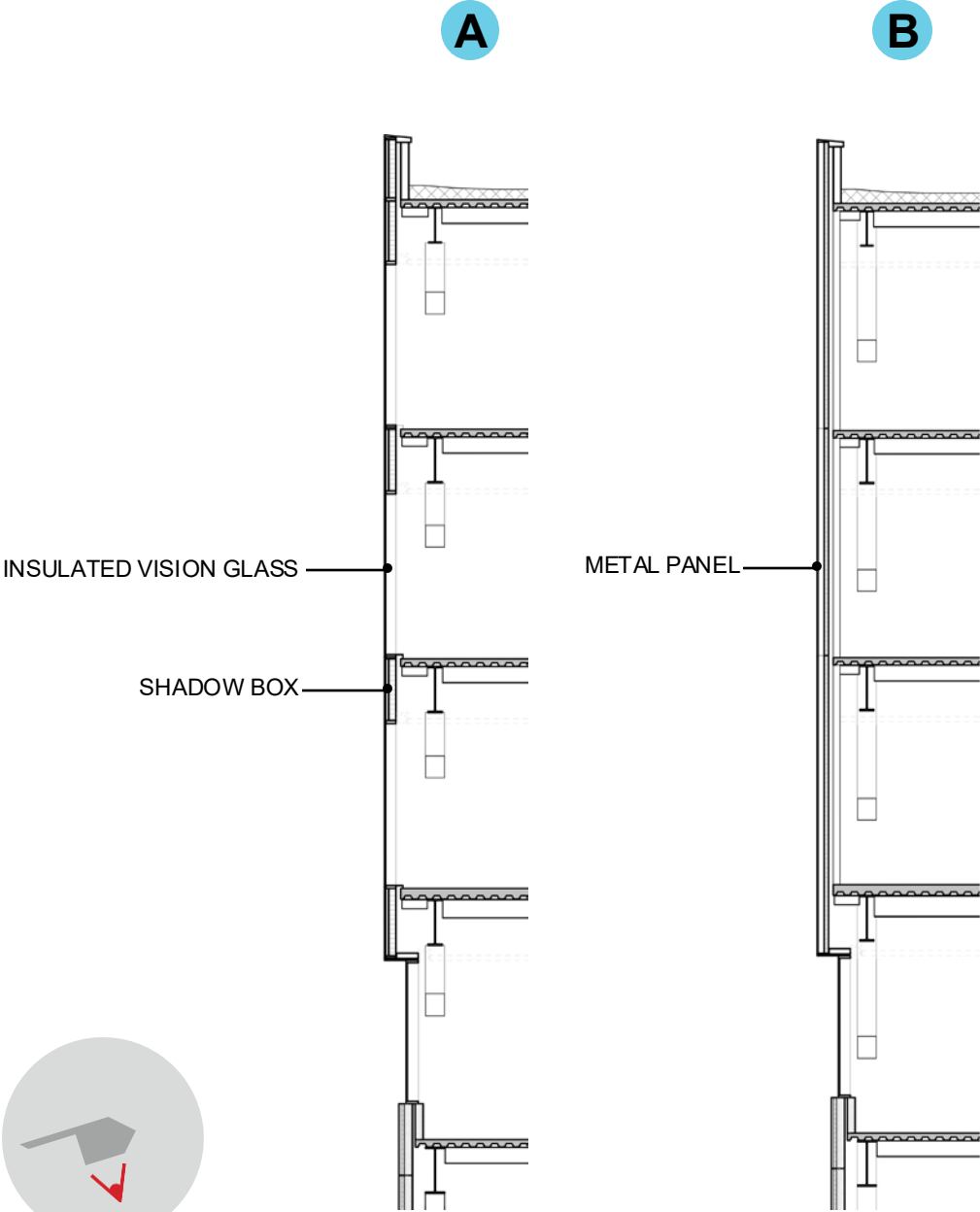
D
METAL PANEL FACADE

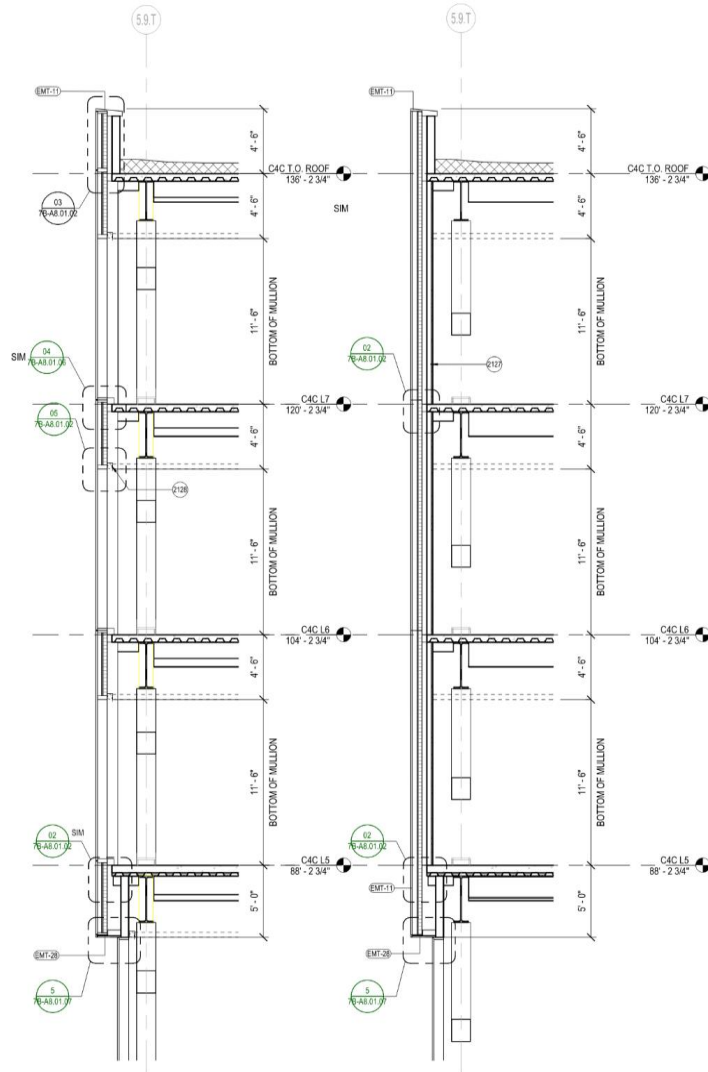


E
RAINSCREEN METAL
PANEL SYSTEM



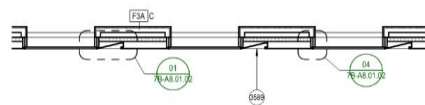
F
METAL LOUVER





04 WALL SECTION - TOWER - S @ GLAZING
SCALE: 1/4" = 1'-0"

6 WALL SECTION - TOWER - S @ MTL PANEL
SCALE: 1/4" = 1'-0"

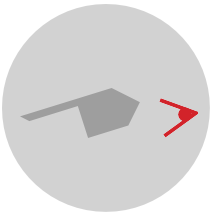
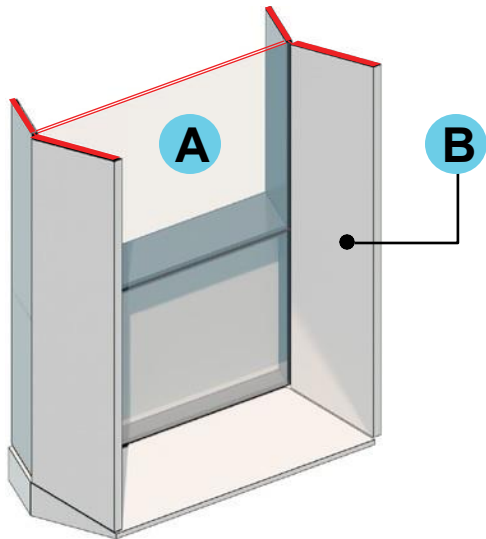
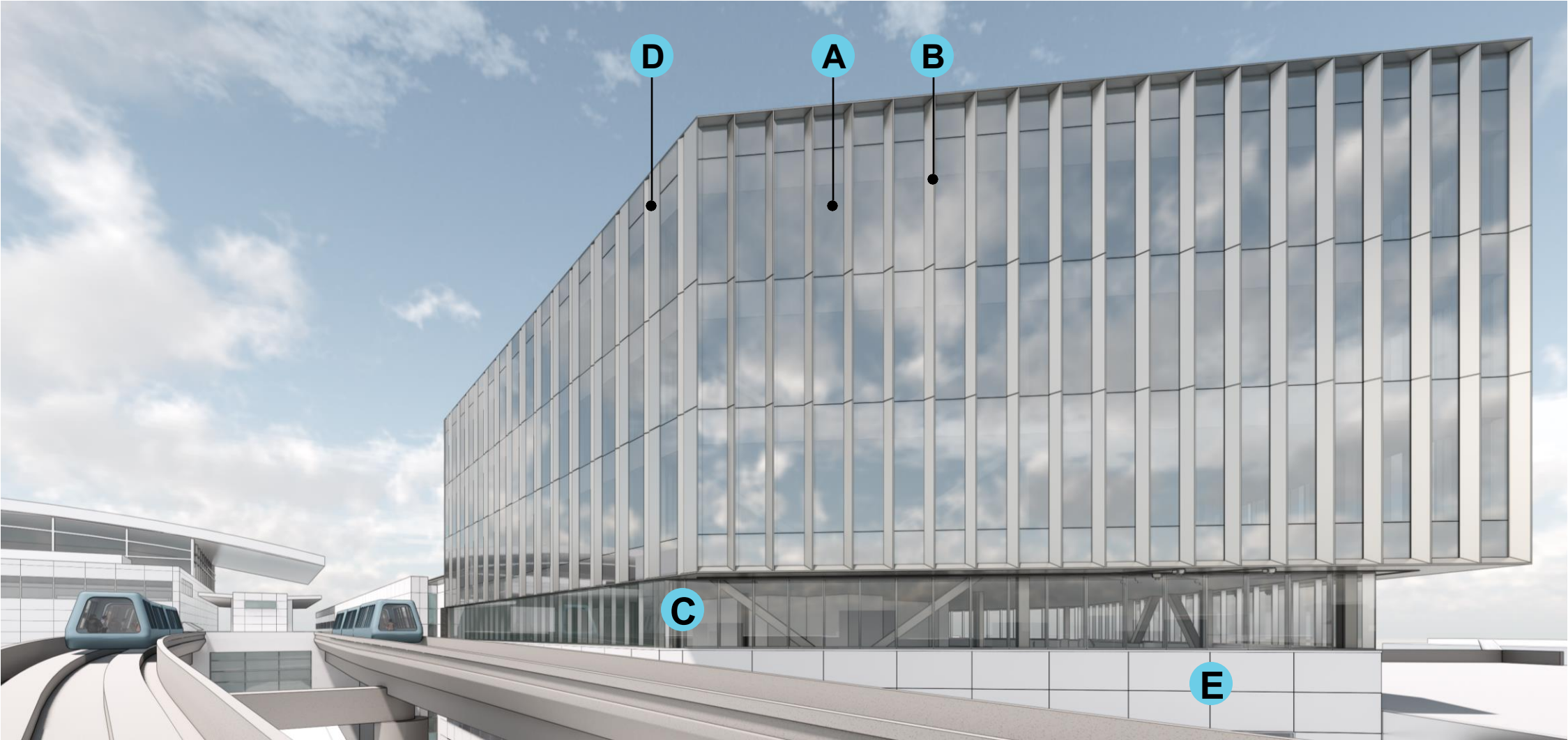


01 ENLARGED PLAN - FACADE - SOUTH
SCALE: 1/4" = 1'-0"

EXTERIOR MATERIAL LEGEND

| | |
|---------------|---|
| EXT-10 | CURTAIN WALL INTERIOR ALUMINUM FINISH @L&4.7. SEE |
| EXT-11 | CURTAIN WALL EXTERIOR FINISH & METAL PANEL FINISH @ S SPEC |
| EXT-12 | CURTAIN WALL EXTERIOR TRIM FINISH @L&4.7. SEE |
| EXT-20 | CURTAIN WALL INTERIOR ALUMINUM FINISH @L&4.7. SEE |
| EXT-21 | CURTAIN WALL SHADOWBOX BACK PANEL @L (L&4.7. SEE |
| EXT-22 | EXTERIOR ALUMINUM SOFFIT FINISH ABOVE L&4. SEE SPEC |
| EXT-17 | EXTERIOR ALUMINUM PANEL & WINDOW FRAME FINISH @ S SPEC |
| EXT-18 | EXTERIOR CORRUGATED CORRUGATED ALUMINUM PANEL RAIN SCREEN @ PENTHOUSE. SEE SPEC |
| EXT-19 | CORRUGATED ALUMINUM PANEL RAIN SCREEN @ GROUND FLOOR. SEE SPEC |
| EXT-23 | EXTERIOR ALUMINUM PANEL ADJACENT TOWER ARCADE EXTERIOR MATCH ADJACENT |
| EXT-06 | INSULATED MID-RIRON GLASS UNIT GLAZING VISION GLASS @L&4.7. SEE SPEC |
| EXT-07 | INSULATED LOW-RIRON GLASS UNIT GLAZING VISION GLASS @ S SPEC |
| EXT-08 | INSULATED MID-RIRON GLASS UNIT GLAZING VISION GLASS @ S SPEC |
| EXT-09 | INSULATED MID-RIRON GLASS UNIT GLAZING W/ BIRD SAFE TREATMENT @L&4.7. SEE SPEC |
| EXT-13 | CEMENT PLASTER @ (E) PRE-SECURE CONNECTOR W/ BIRD SAFE TREATMENT @L&4. SEE SPEC |
| EXT-14 | INSULATED LOW-RIRON GLASS UNIT GLAZING W/ BIRD SAFE TREATMENT @L&4. SEE SPEC |
| EXT-01 | ARCHITECTURAL STORM RESISTANT GLAZING, FINISH MATCH EXTERIOR WALL, B.D.O. CROSS SECTION D-01-H |
| EXT-02 | ARCHITECTURAL STORM RESISTANT GLAZING, FINISH MATCH EXTERIOR WALL, B.D.O. CROSS SECTION D-02-H |
| EXT-03 | ARCHITECTURAL STORM RESISTANT GLAZING, FINISH MATCH ADJ. EXTERIOR WALL, B.D.O. CROSS SECTION D-03-H |
| EXT-04 | ARCHITECTURAL STORM RESISTANT GLAZING, FINISH MATCH EXTERIOR WALL, B.D.O. CROSS SECTION D-04-H |

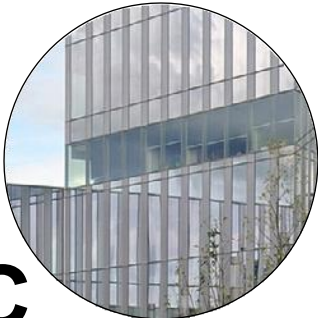




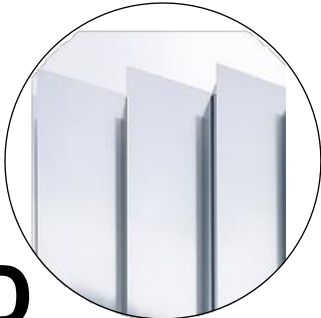
A
LOW-E COATED
GLAZING



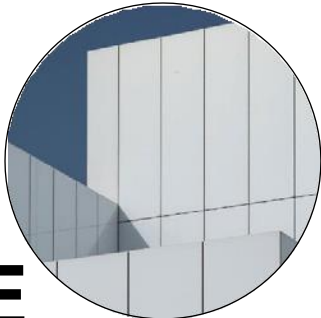
B
PAINTED ALUMINUM
SHADING FINs



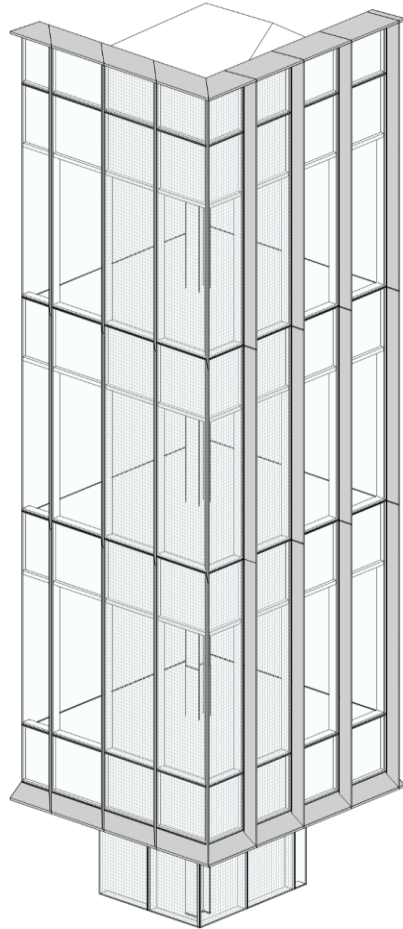
C
LOW IRON CLEAR
GLAZING



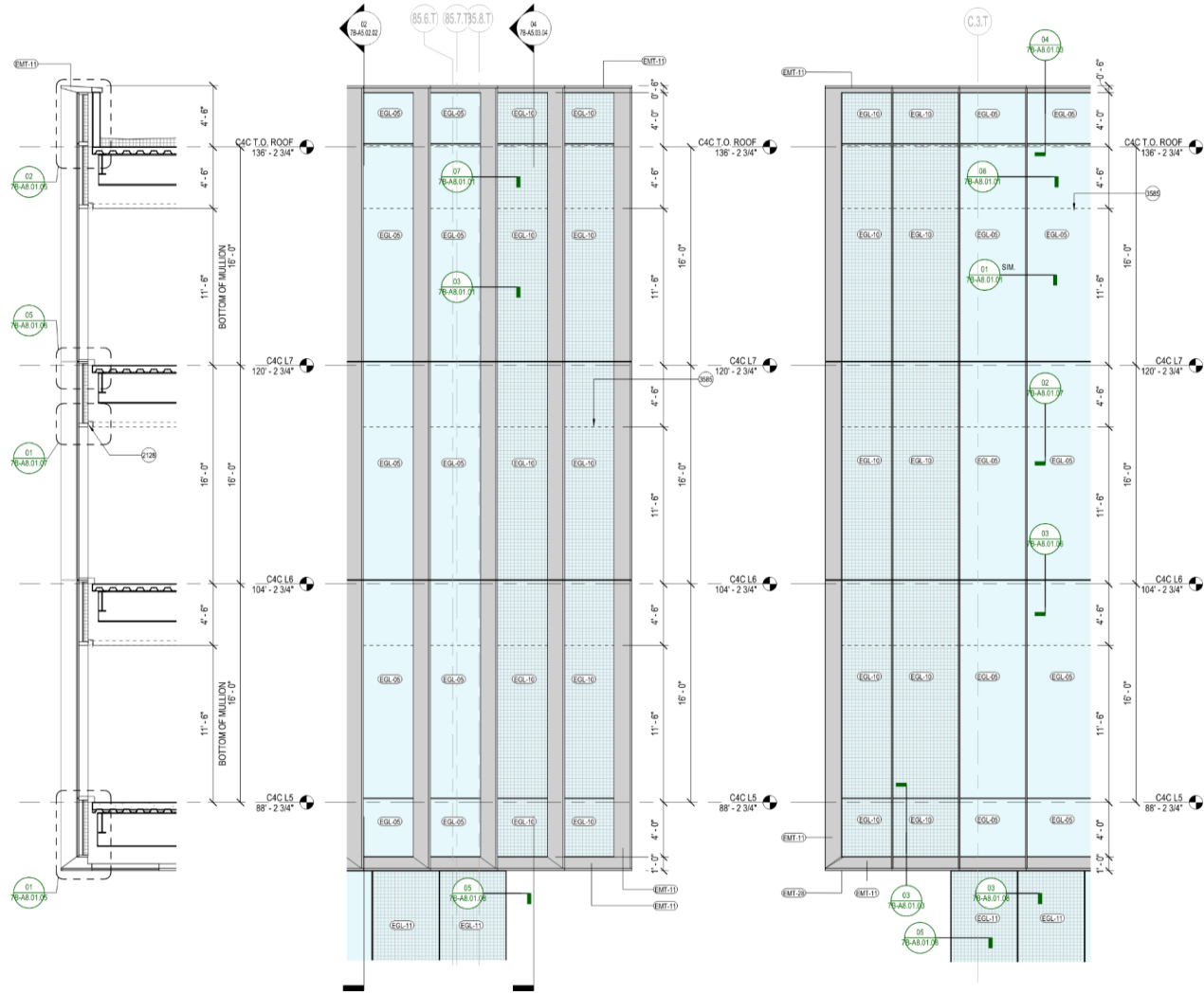
D
METAL PANEL FACADE



E
RAINSCREEN METAL
PANEL SYSTEM



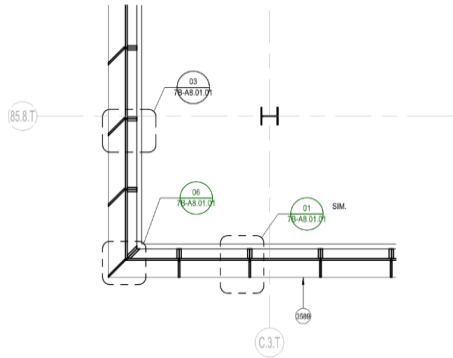
05 AXON - TOWER NORTHWEST CORNER
SCALE: 1/4" = 1'-0"



04 WALL SECTION - TOWER - SOUTHEAST
SCALE: 1/4" = 1'-0"

03 EXT ELEV - TOWER - SOUTHEAST
SCALE: 1/4" = 1'-0"

02 EXT ELEV - TOWER - NORTHEAST
SCALE: 1/4" = 1'-0"



01 ENLARGED PLAN - FACADE - EAST
SCALE: 1/4" = 1'-0"

SHEET NOTES

- 2128 CEILING AND SHADE BY OTHERS, TYP.
- 3585 BOTTOM OF SHADOWBOX, TYP.
- 3589 HORIZONTAL EDGE/FIN BELOW, TYP.

EXTERIOR GRAPHIC LEGEND

- EMT-11, SEE EXTERIOR MATERIAL LEGEND
- EMT-17, SEE EXTERIOR MATERIAL LEGEND
- EMT-18, SEE EXTERIOR MATERIAL LEGEND
- EMT-19, SEE EXTERIOR MATERIAL LEGEND
- EMT-20, SEE EXTERIOR MATERIAL LEGEND
- VISION GLASS (REFER TO ENLARGED ELEVATIONS FOR GLASS TYPE DESIGNATION)
- VISION GLASS W/ BIRD SAFE TREATMENT (REFER TO ENLARGED ELEVATIONS FOR GLASS TYPE DESIGNATION)

EXTERIOR WALL TYPE LEGEND

- WT-01: UNITIZED CURTAIN WALL @TOWER, SEE SPEC
- WT-02: UNITIZED CURTAIN WALL @L4 LOUNGE, SEE SPEC
- WT-03: STOREFRONT SYSTEM @PODIUMCONNECTOR, SEE SPEC
- WT-04: ALUM PANEL RAINSCREEN @PODIUMCONNECTOR, SEE SPEC
- WT-05: CORRUGATED ALUM PANEL RAINSCREEN @ADA LEVEL, SEE SPEC
- WT-06: PERFORATED CORRUGATED METAL PANEL RAINSCREEN @PENTHOUSE, SEE SPEC

EXTERIOR MATERIAL LEGEND

- EMT-08: CURTAIN WALL INTERIOR ALUMINUM FINISH @L4-L7, SEE SPEC
- EMT-11: CURTAIN WALL EXTERIOR FIN & METAL PANEL FINISH @ L5-L7, SEE SPEC
- EMT-20: CURTAIN WALL EXTERIOR TRIM FINISH @ L5-L7, SEE SPEC
- EMT-28: CURTAIN WALL INTERIOR ALUMINUM FINISH @L2-L3, SEE SPEC
- EMT-29: CURTAIN WALL SHADOWBOX BACK PANEL @ L4-L7, SEE SPEC
- EMT-28: EXTERIOR ALUMINUM SOFFIT FINISH ABOVE L4, SEE SPEC
- EMT-17: EXTERIOR ALUMINUM PANEL & WINDOW FRAME FINISH @ L2-L3, SEE SPEC
- EMT-18: PERFORATED CORRUGATED ALUMINUM PANEL RAIN SCREEN @ PENTHOUSE, SEE SPEC
- EMT-19: CORRUGATED ALUMINUM PANEL RAIN SCREEN @ GROUND FLOOR, SEE SPEC
- EMT-30: EXTERIOR ALUMINUM PANEL ADJACENT T3W AIRSIDE EXT WALL, FINISH TO MATCH ADJACENT T3W EXT WALL
- EG-09: INSULATED MID-IRON GLASS UNIT GLAZING (VISION GLASS) @ L5-L7, SEE SPEC
- EG-07: INSULATED LOW-IRON GLASS UNIT GLAZING (VISION GLASS) @L4, SEE SPEC
- EG-08: INSULATED MID-IRON GLASS UNIT GLAZING (VISION GLASS) @ L3-L3 SEE SPEC
- EG-10: INSULATED MID-IRON GLASS UNIT GLAZING W/ BIRD SAFE TREATMENT @L5-L7, SEE SPEC
- EG-10: CEMENT PLASTER @ (B) PRE-SECURE CONNECTOR WINDOW PATCH, SEE SPEC
- EG-11: INSULATED LOW-IRON GLASS UNIT GLAZING W/ BIRD SAFE TREATMENT @L4, SEE SPEC
- ELV-01: ARCHITECTURAL STORM RESISTANT LOUVER, FINISH MATCH ADJ EXTERIOR WALL, B.O.D. CS GROUP DO-9614
- ELV-02: ARCHITECTURAL GRILLE BLADE OVER STORM RESISTANT LOUVER, FINISH MATCH ADJ EXTERIOR WALL, B.O.D. CS GROUP RS-0215
- ELV-03: ARCHITECTURAL STORM RESISTANT LOUVER, FINISH MATCH ADJ EXTERIOR WALL, B.O.D. CS GROUP RS-4700

SFO

San Francisco International Airport

Key Map

| NO. | DATE | REVISION DESCRIPTION |
|-----|------------|--|
| 01 | 07/17/2024 | PACKAGE 7B - 100% SCHEMATIC DESIGN |
| 02 | 08/27/2024 | PACKAGE 7B - 50% DESIGN DEVELOPMENT |
| 03 | 09/27/2024 | PACKAGE 7B - 60% DESIGN DEVELOPMENT |
| 04 | 04/25/2025 | PACKAGE 7B - 80% CONSTRUCTION DOCUMENT |
| 05 | 08/15/2025 | PACKAGE 7B - ISSUE FOR PERMIT |

Turner

300 Frank H Ogawa Plaza, Suite 510
Oakland, CA 94612
415-500-4229

Gensler

220 Montgomery Street, Suite 200
San Francisco, CA 94104
415-433-3700

TEF

1420 Sutter Street
San Francisco, CA 94109
415-381-7918

CONTRACT NO.
10071.76.400

PROJECT TITLE
TERMINAL 3 WEST
MODERNIZATION
PACKAGE 7B - C4C

SHEET TITLE
FACADE SYSTEMS - TOWER
WT-01 CORNER

APPROVED:
APPROVED:
APPROVED:
DESIGNED BY:
DRAWN BY:
SCALE:
SHEET NUMBER

CHECKED BY:
DATE:
08/15/2025
SIZE:
ARCH-B1

7B-A5.03.04

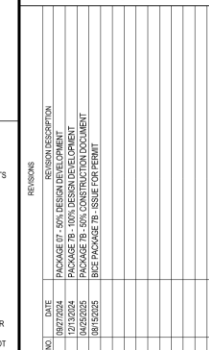
07/20/2025 10:16 AM

Relevant CD Drawings

SFO T3 WEST MODERNIZATION | TURNER | GENSLER | TEF
CIVIC DESIGN REVIEW | PHASE 3
CONSTRUCTION DOCUMENTS

SFO T3 WEST MODERNIZATION | TURNER | GENSLER | TEF
CIVIC DESIGN REVIEW | PHASE 3
CONSTRUCTION DOCUMENTS

SFO T3 WEST MODERNIZATION | TURNER | GENSLER | TEF
CIVIC DESIGN REVIEW | PHASE 3
CONSTRUCTION DOCUMENTS



300 Frank H Ogawa Plaza, Suite 1200
Oakland, CA 94612
415-509-4229

220 Montgomery Street, Suite 1
San Francisco, CA 94104
415-433-3700

1420 Sutter Street
San Francisco, CA 941
415-391-7918

1

1

76_40

10

| | |
|------|--|
| CONT | |
| SEAL | |

| | |
|--|--|
| | |
|--|--|

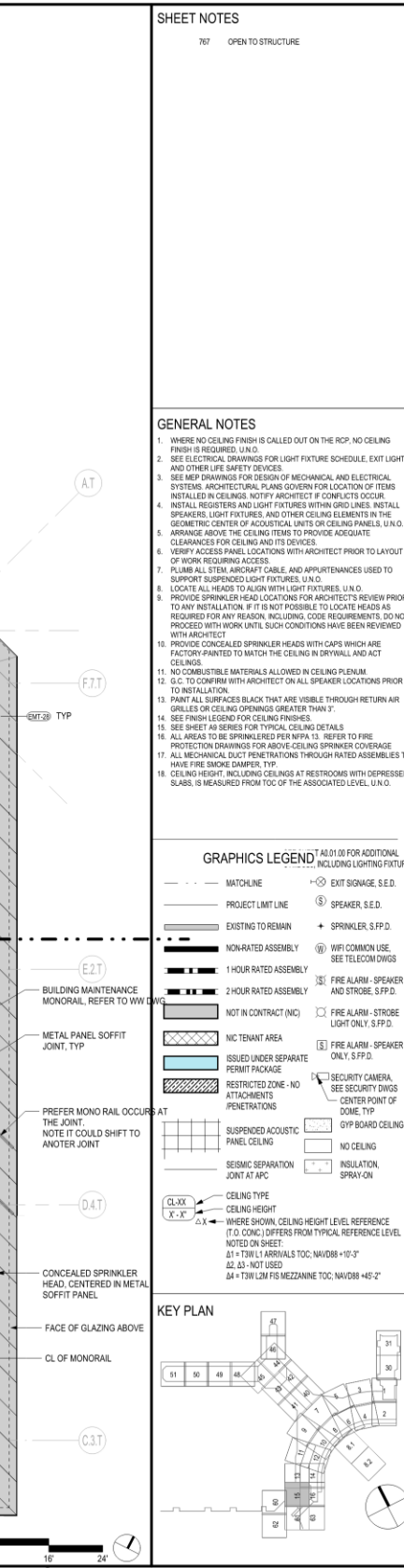
1

| |
|--------|
| APPRO |
| DESIGN |

SHEET

| | |
|--|--|
| | |
|--|--|

17

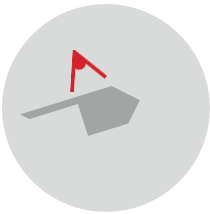
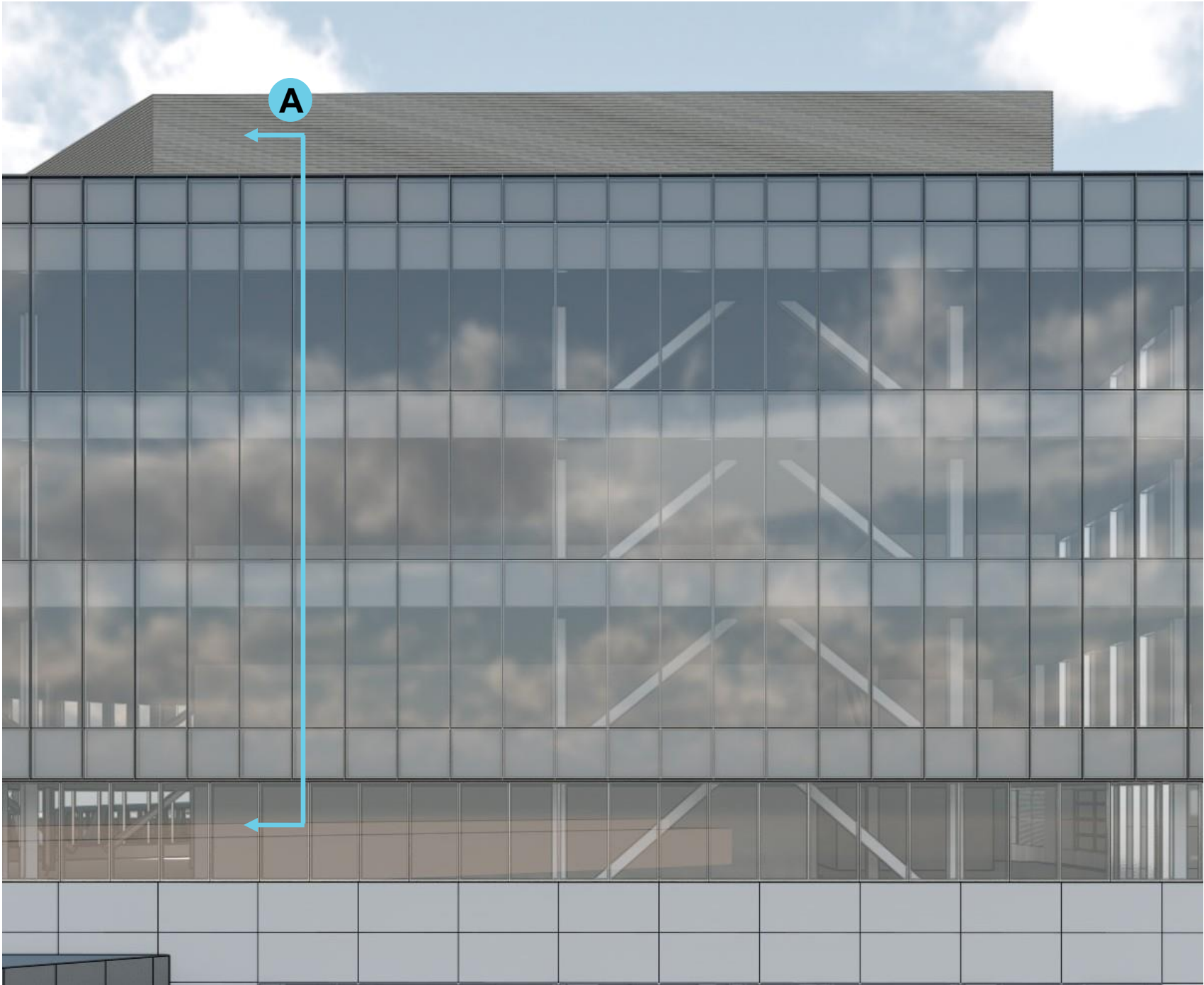
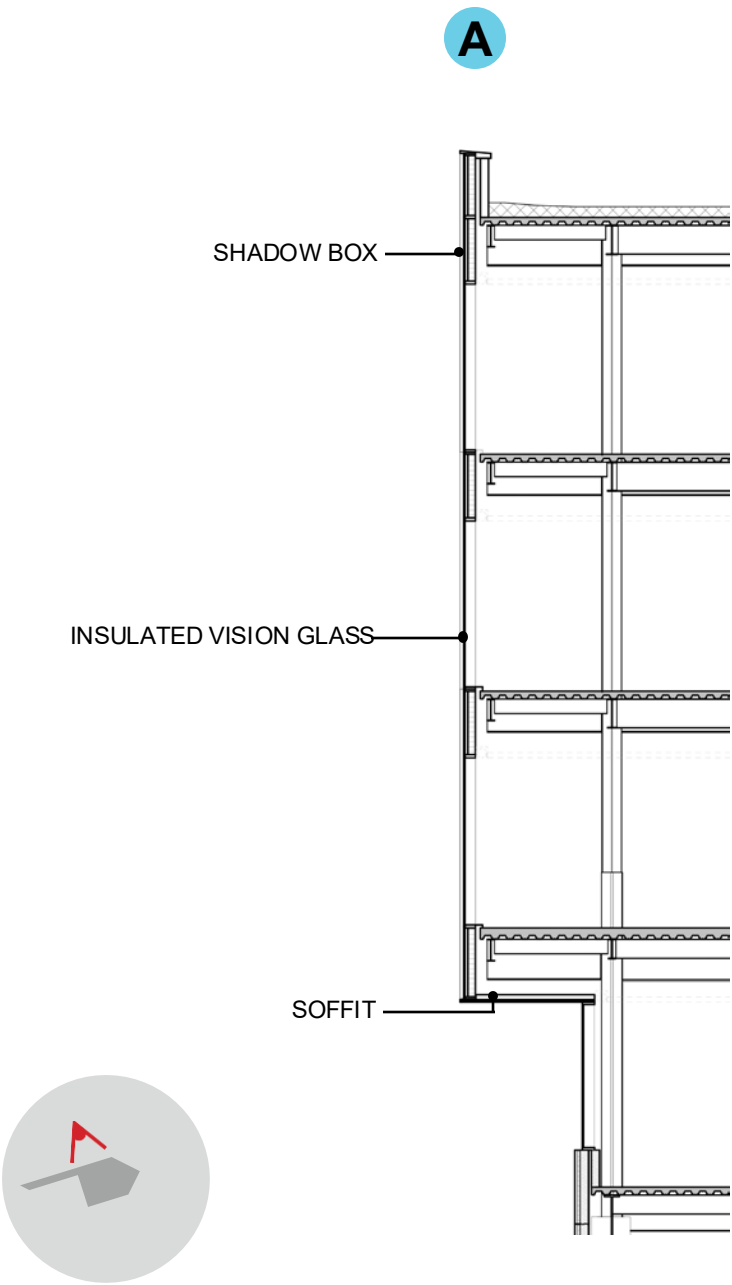


Copyright © 2019-2025 City And County Of San Francisco. These construction documents are the sole property of The City And County Of San Francisco and are protected by the Copyright Act. Any reproduction, publication, or use by any method, in whole or in part, without the express written consent of the San Francisco Airport Commission is prohibited.

If this drawing is not ARCH E1 (30"x42") NOMINAL SIZE, it has been revised from its original size and scales noted are no longer applicable.

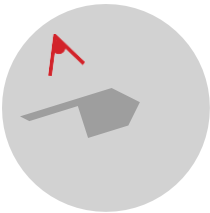
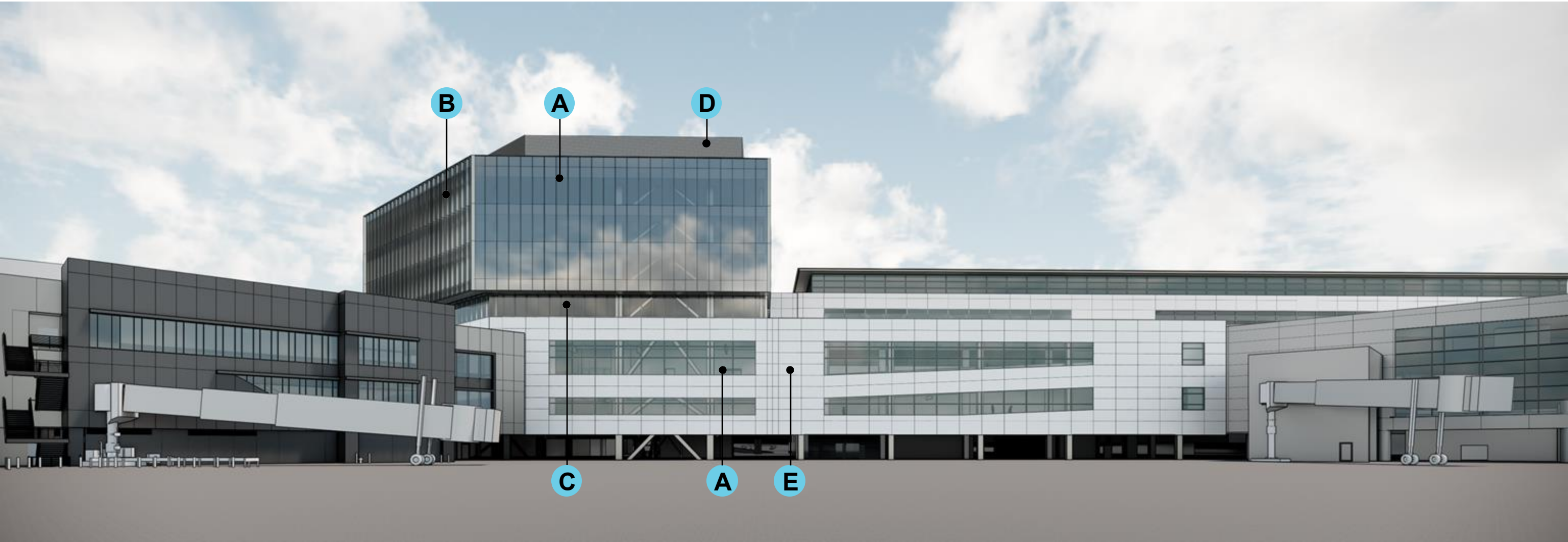
[illegible]

L





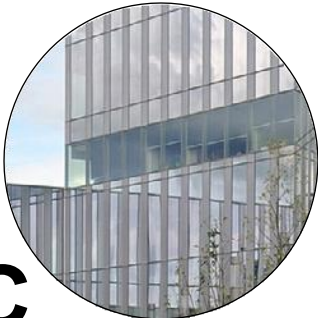
19



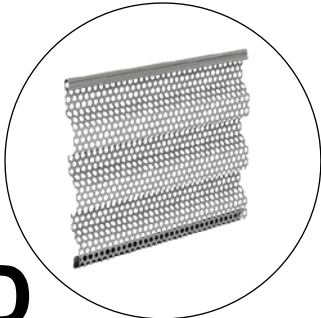
A
LOW-E COATED
GLAZING



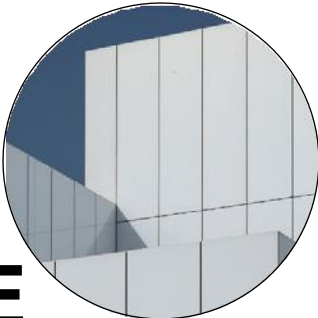
B
PAINTED ALUMINUM
SHADING FINs



C
LOW IRON CLEAR
GLAZING



D
PERFORATED
CORRUGATED METAL



E
RAINSCREEN METAL
PANEL SYSTEM

Thank you



SAN FRANCISCO INTERNATIONAL AIRPORT

