



SIGNATURE  
AVIATION

---

San Francisco International Airport  
CIVIC DESIGN REVIEW (CDR)  
Conceptual Design  
May 2026

# TABLE OF CONTENT

SIGNATURE BRAND

SITE OVERVIEW

DESIGN STUDIES

DESIGN VISION

DRAWINGS

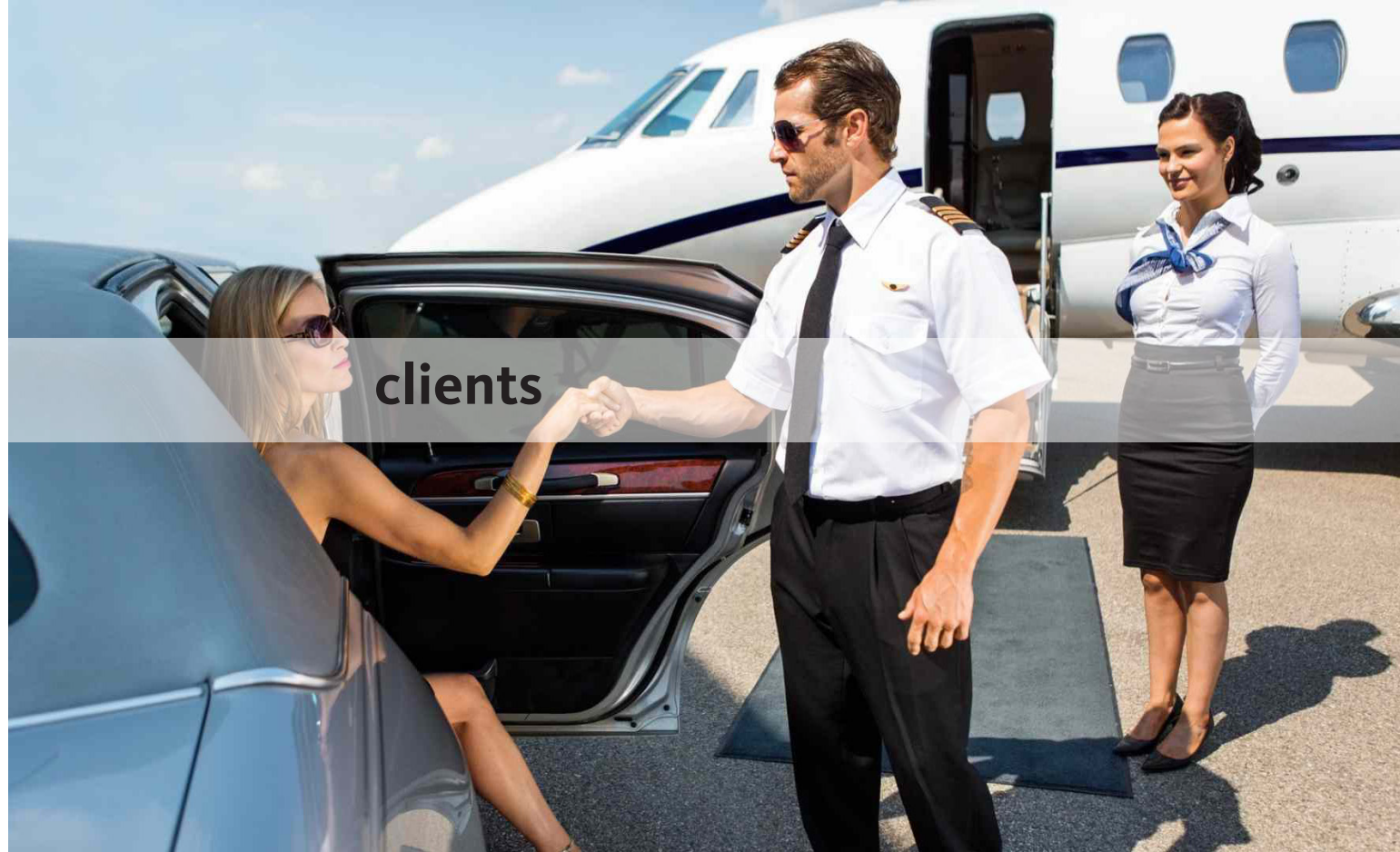
**SIGNATURE BRAND**



**Effortless Luxury**  
**Global Connectivity**  
**Personalized Service**

Consistent, exceptional service. Line support that's expert, safe and ready on the ramp. Clean, comfortable, well-furnished facilities. Service professionals who go the extra mile for your passengers and crew.





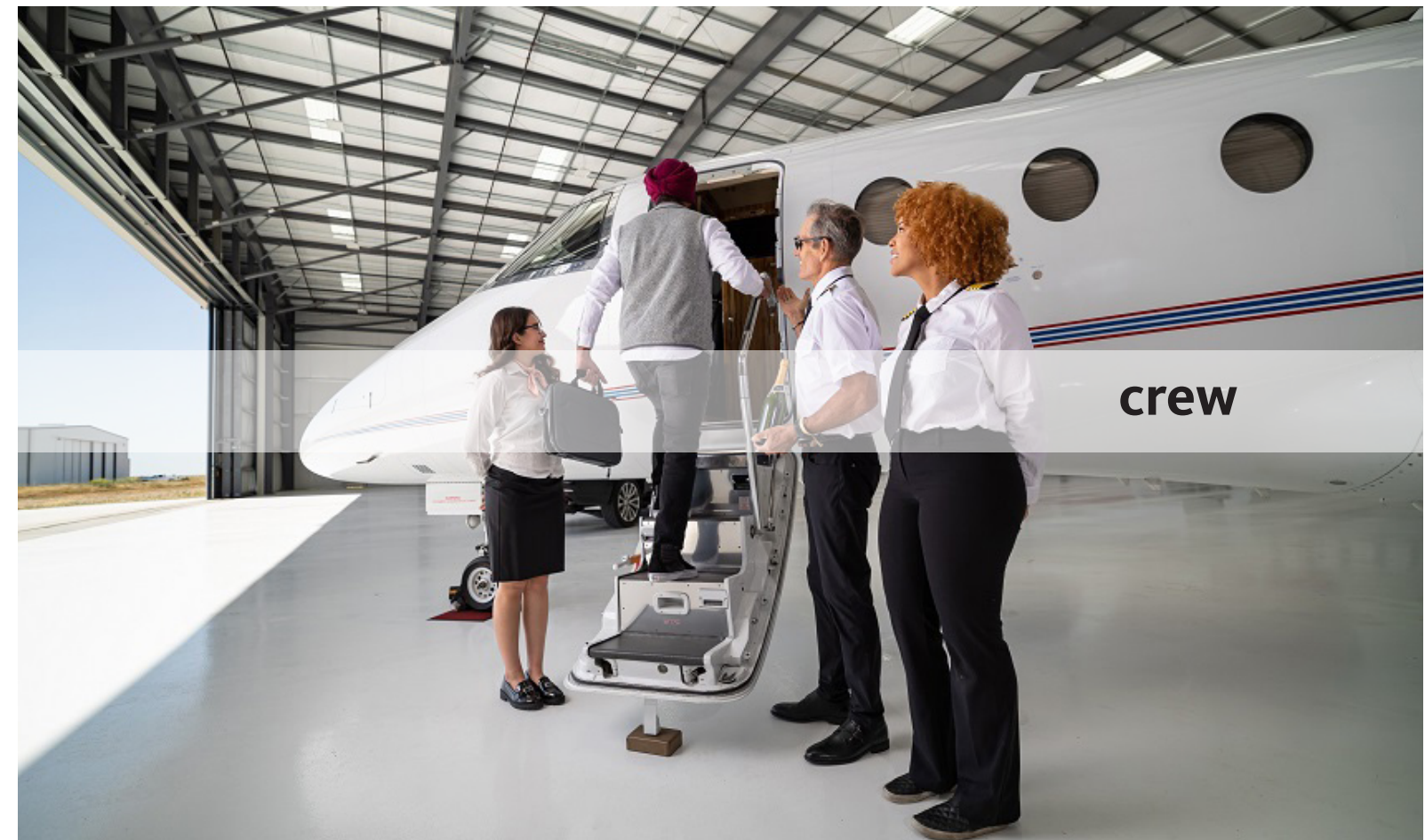
clients



pilots



residents



crew

## **SITE OVERVIEW**



bridge



park



beach

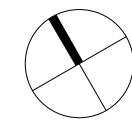
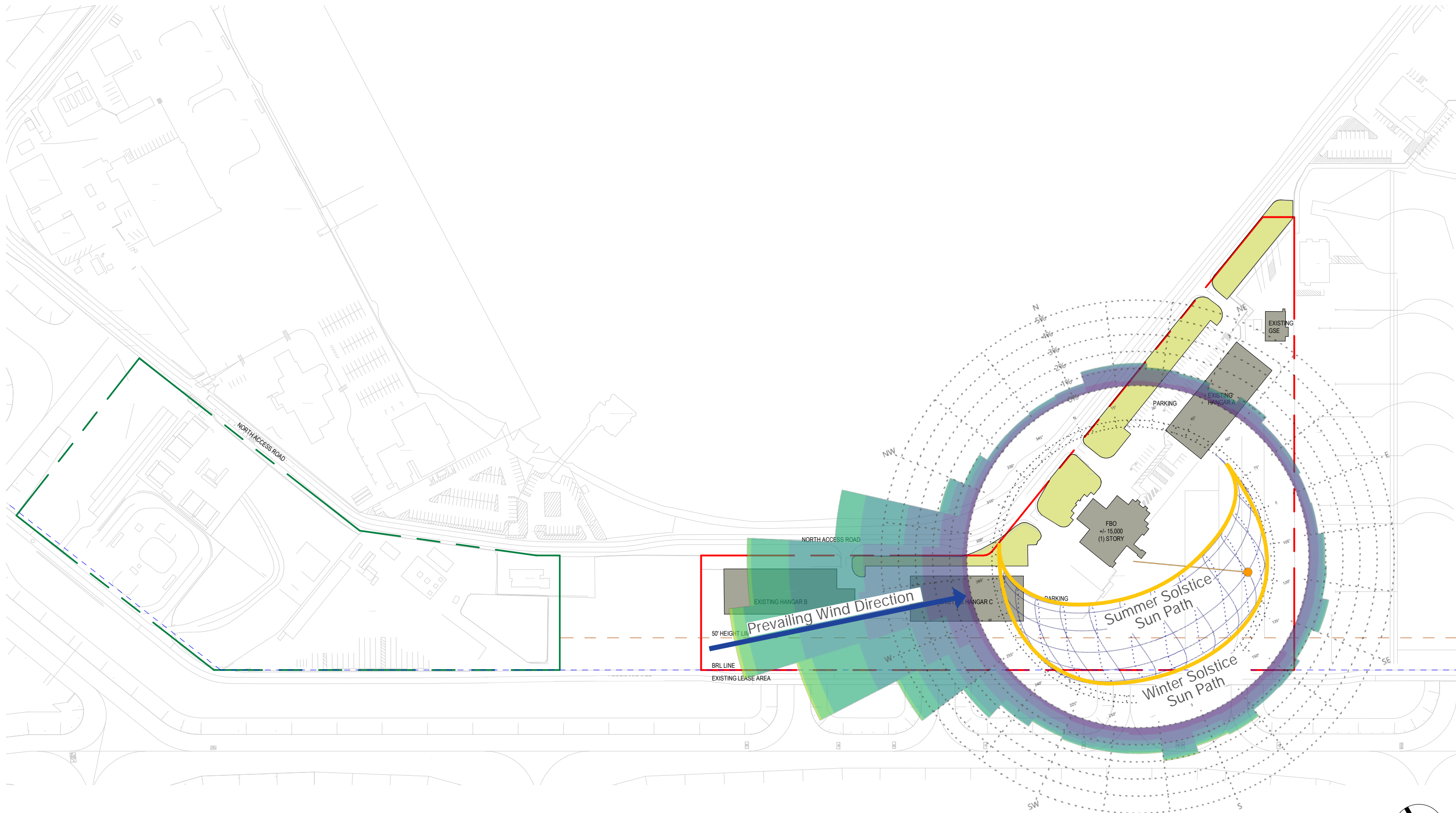


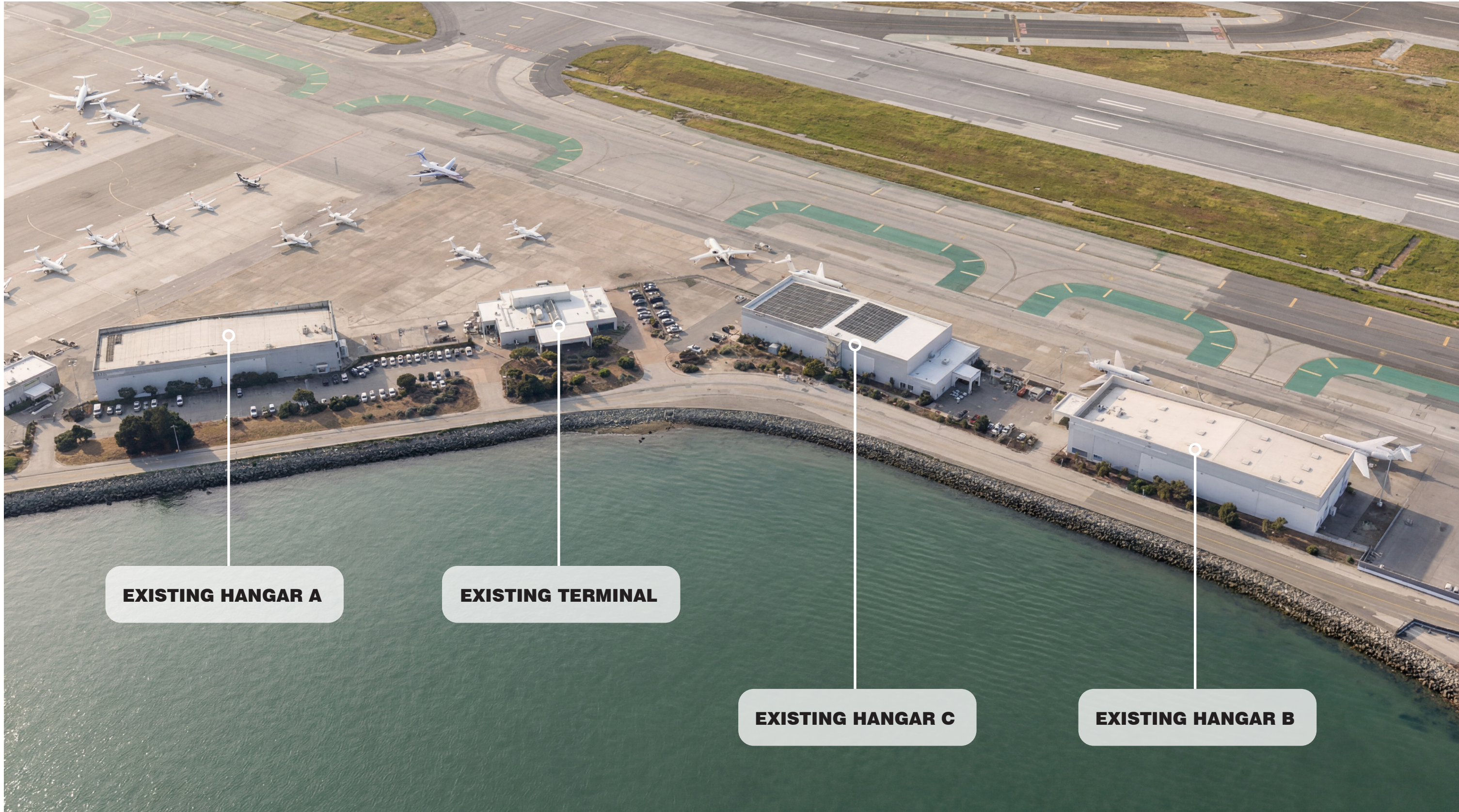
landmark





Project Site





**EXISTING HANGAR A**

**EXISTING TERMINAL**

**EXISTING HANGAR C**

**EXISTING HANGAR B**



Hangar A - Northwest



Hangar A - Northeast



Existing Terminal - Northwest

**DESIGN STUDIES**

LOOK & FEEL



Signature Moment

A “Takeoff Room” right before boarding—a minimalist, sound-insulated, light-filled space for solo reflection or prep.



**Runway Reverie: Precision in Motion**

Your runway to the world—refined by Signature.

The terminal becomes a metaphorical runway—not just for jets, but for the traveler. It’s about readiness, clarity, direction, and smooth velocity. Signature clients move effortlessly through a space designed for purposeful movement and subtle luxury.



LOOK & FEEL



Signature Moment

A “Celestial Retreat” tucked within the Aether Parlor—a vaulted, star-lit chamber wrapped in velvet and brass, designed for quiet reflection before flight.



**Monarch Drift : The Aether Parlor**

*A return to the romance of travel.*

A sanctuary for the traveler who moves with purpose and poise. Monarch Drift captures the regal stillness before motion—the moment when time slows, breath deepens, and the journey becomes personal. It’s not about haste; it’s about arrival with intention.



LOOK & FEEL



Signature Moment

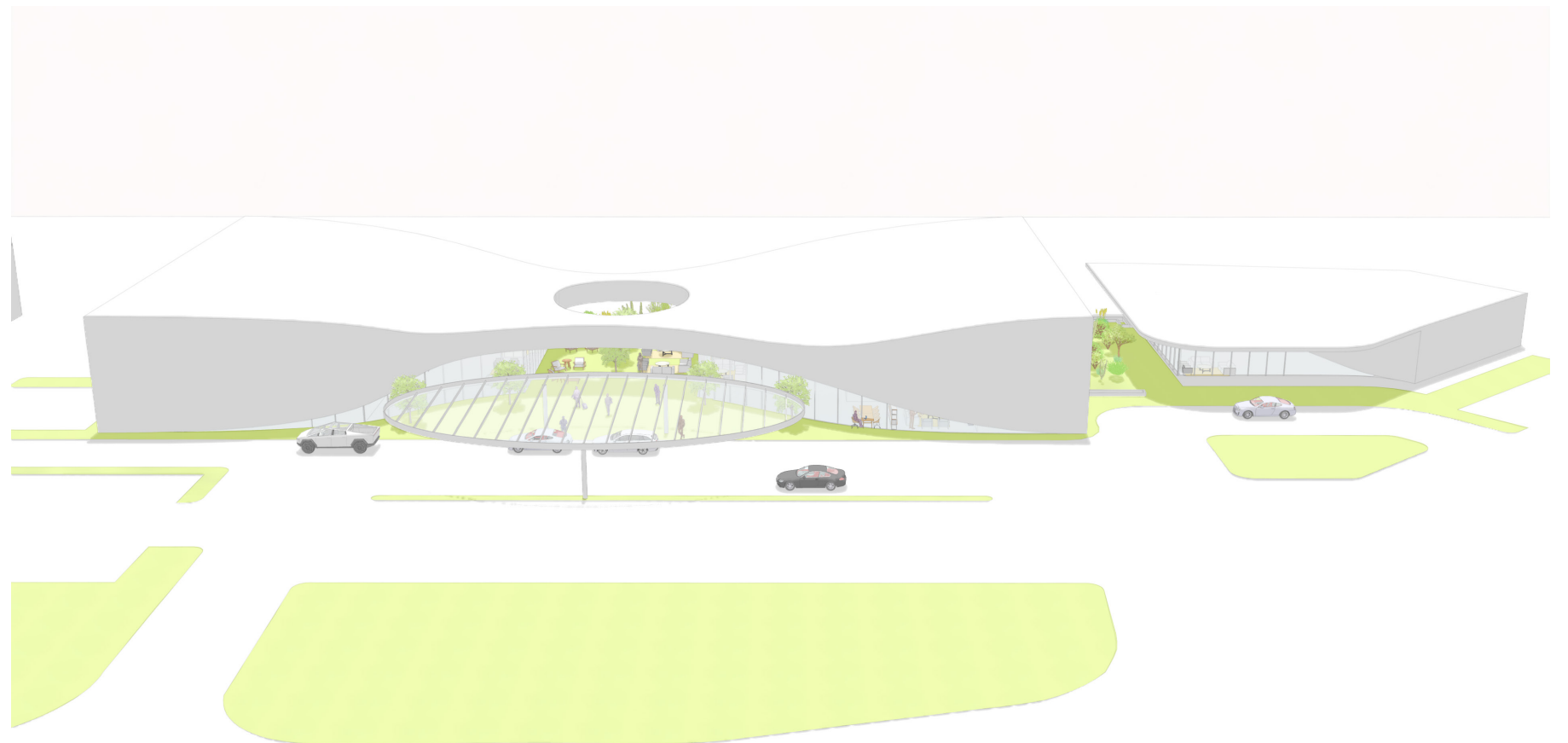
“Sky Chamber” — a dome space with a diffused skylight that mimics real-time sky conditions (cloudy, starry, dusk) in your departure city.

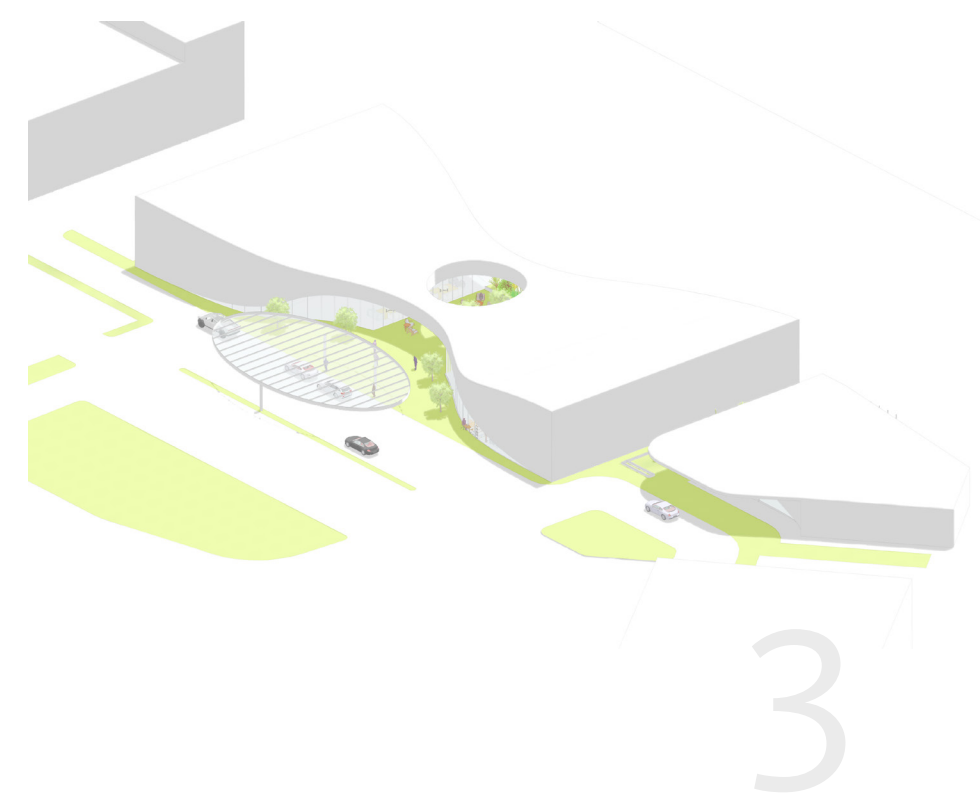
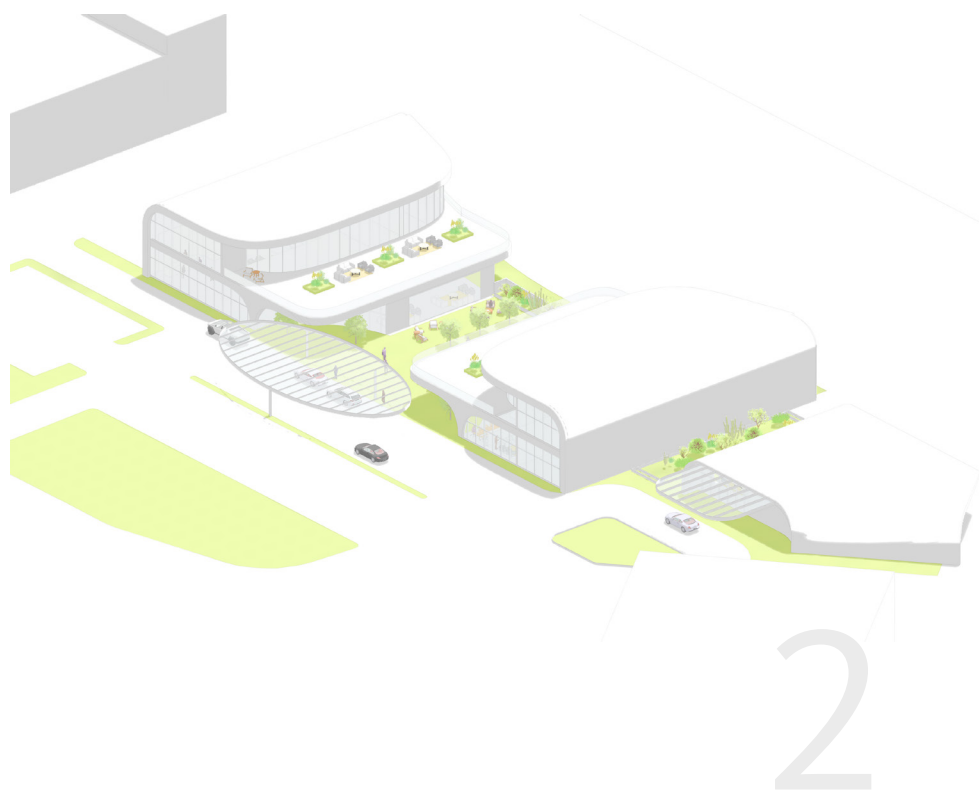
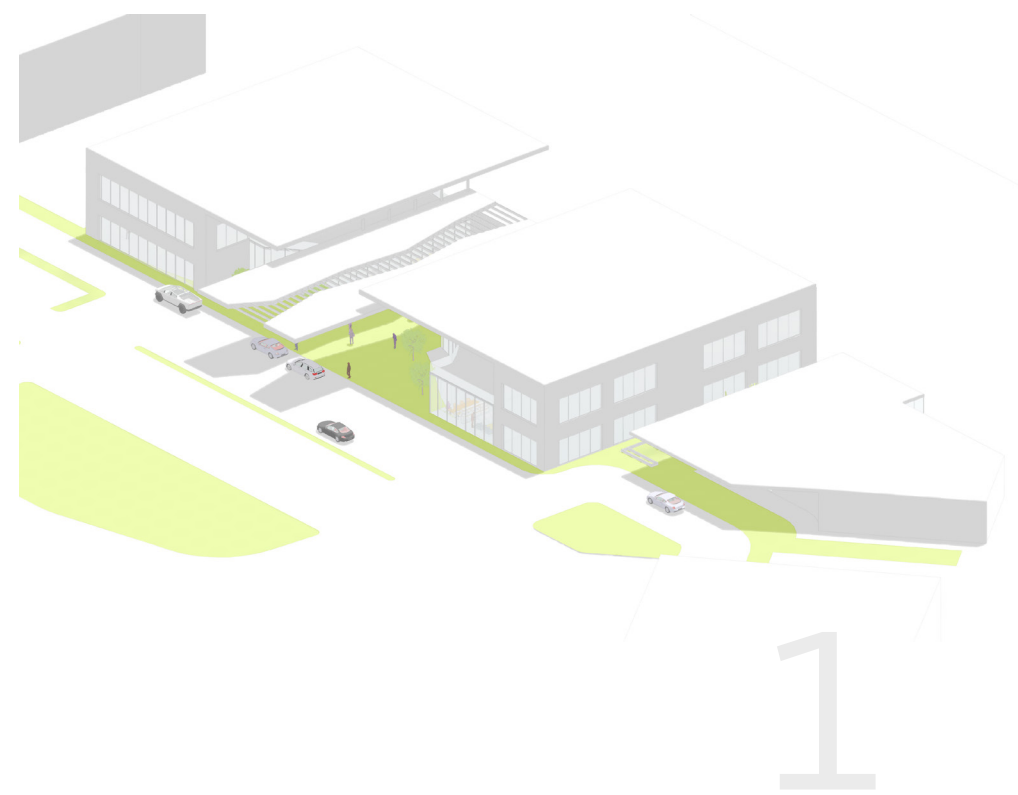


**The Cloud Lounge: Airborne Ease**

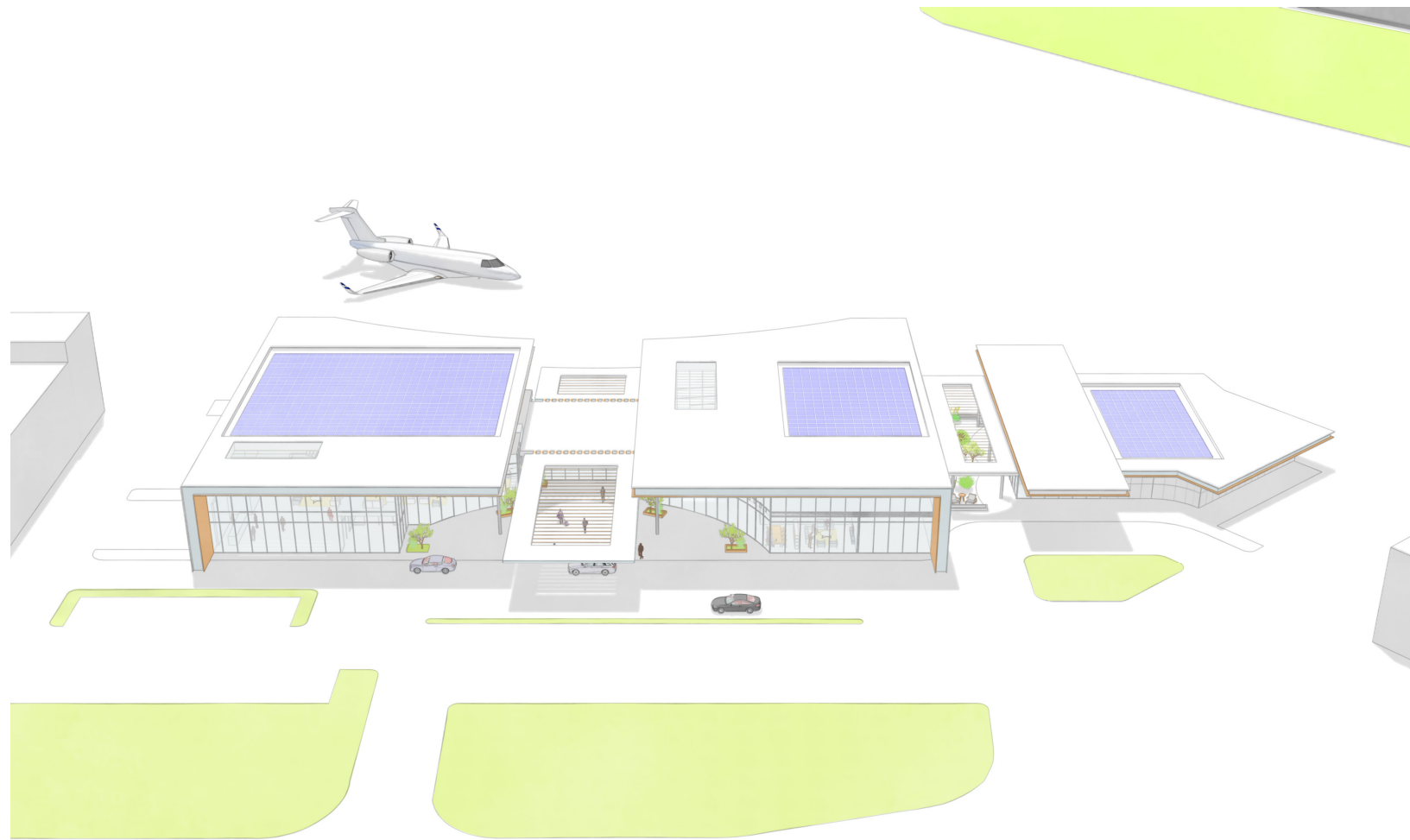
Signature calm, above the clouds.

This terminal dissolves gravity. It’s not about destination—it’s about being aloft, mentally and physically. Think weightlessness, calm, neutrality, and sensorial elevation.





**DESIGN VISION**



## Runway Reverie: Precision in Motion

Your runway to the world—refined by Signature.

The terminal becomes a metaphorical runway—not just for jets, but for the traveler. It's about readiness, clarity, direction, and smooth velocity. Signature clients move effortlessly through a space designed for purposeful movement and subtle luxury.

## LOOK & FEEL



### **Signature Moment**

A "Takeoff Room" right before boarding—a minimalist, sound-insulated, light-filled space for solo reflection or prep.

**DRAWINGS**

- 01 MAIN ENTRY
- 02 FBO
- 03 SPECIALTY SUITES
- 04 EVOL/SPORTS
- 05 TSA
- 06 SPECIALTY TENANT
- 07 EXISTING HANGAR
- 08 DOOR EXTENSION
- 09 PARKING
- 10 DROP-OFF
- 11 MAIN ACCESS ROAD
- 12 STAGING
- 13 TRASH ENCLOSURE





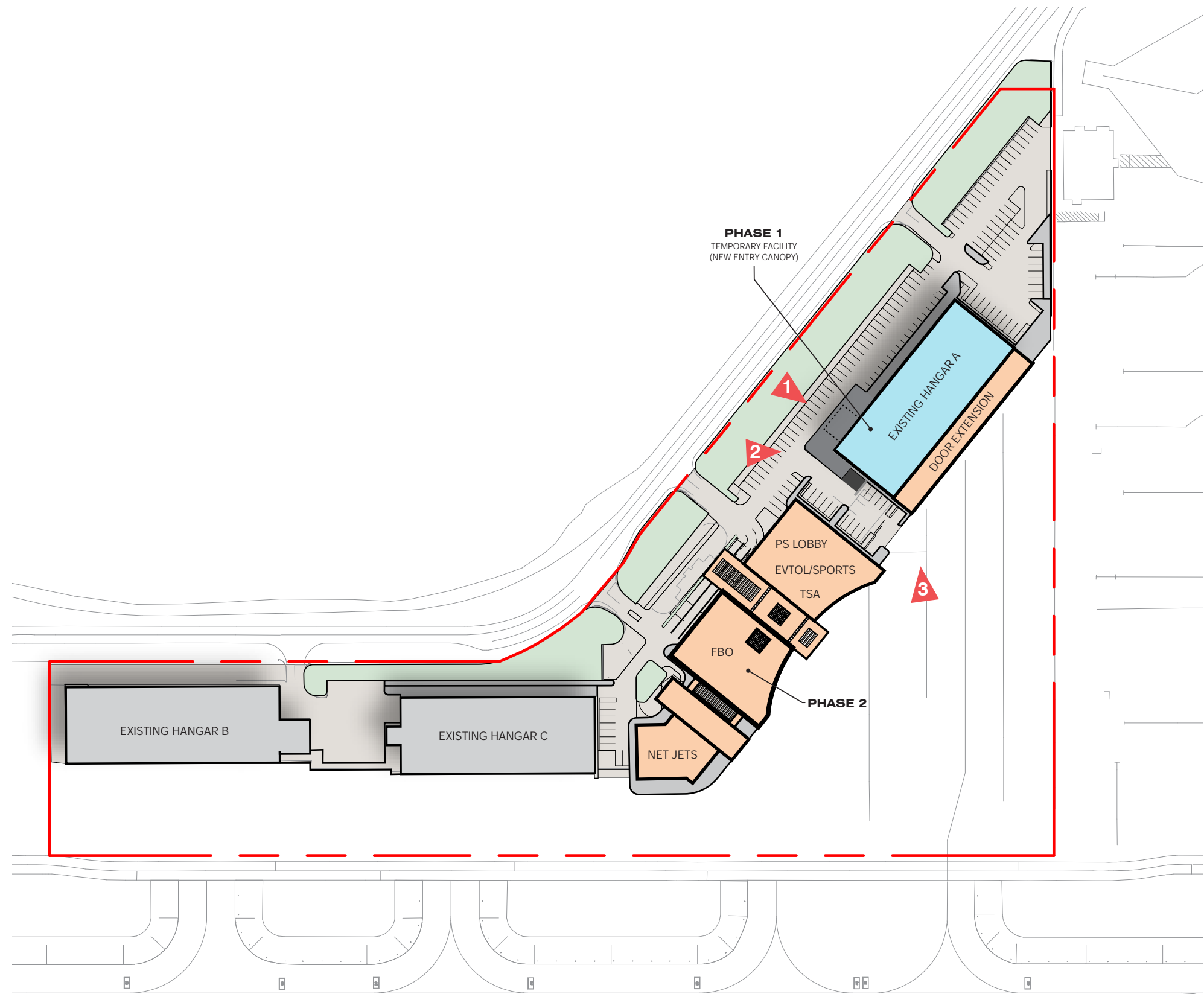
1. TEMPORARY FACILITY - FRONT VIEW



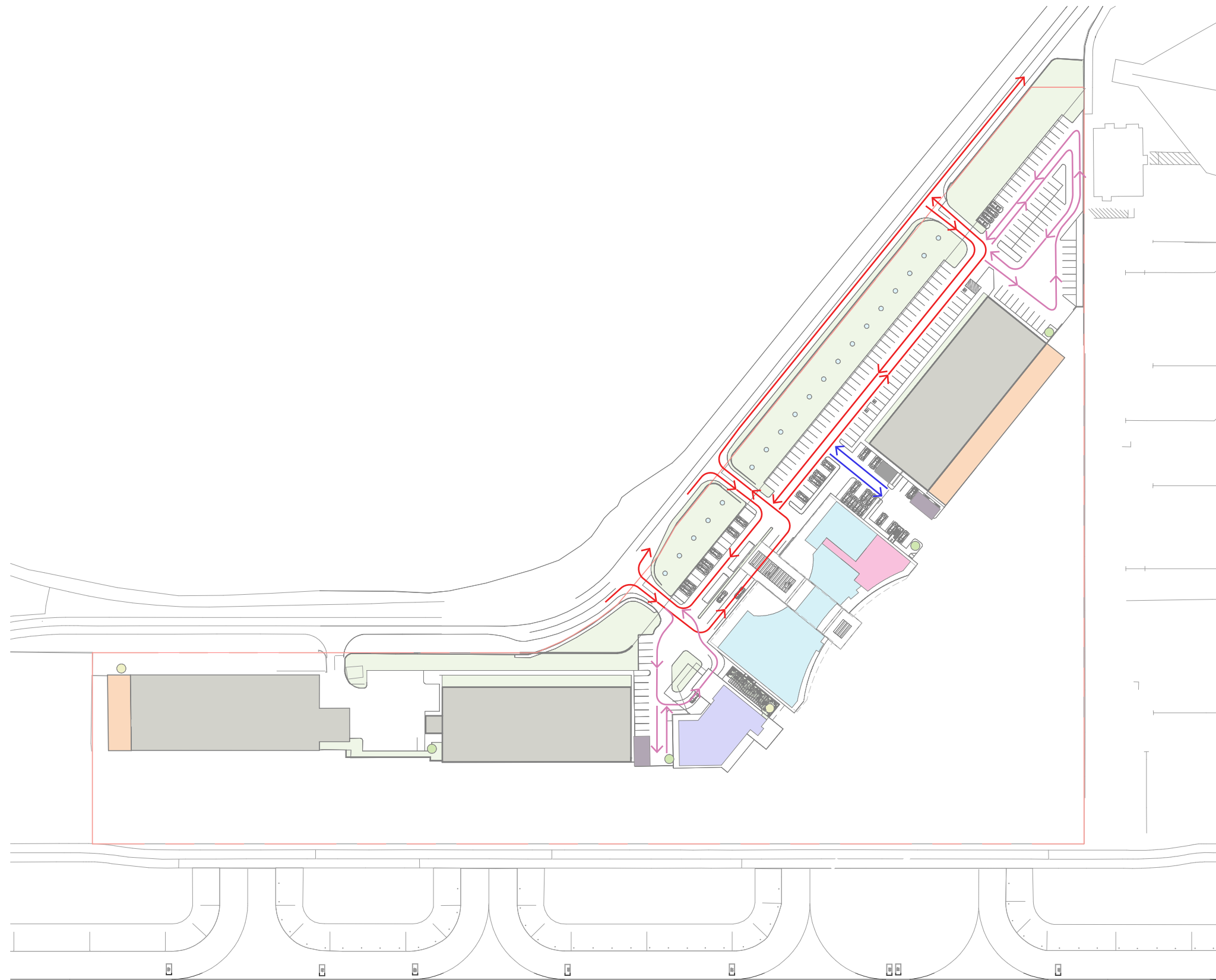
2. TEMPORARY FACILITY - CORNER VIEW

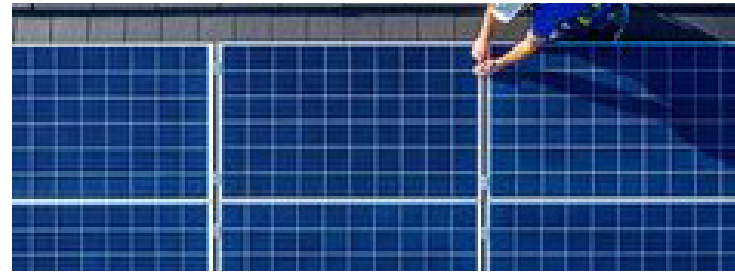


3. TEMPORARY FACILITY - HANGAR VIEW

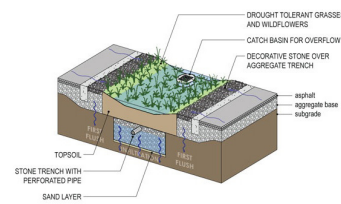


- MAIN
- SECONDARY
- SERVICE AND TRASH

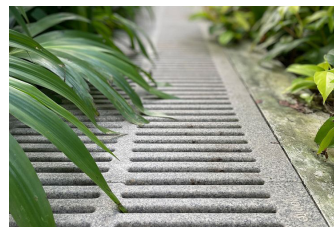




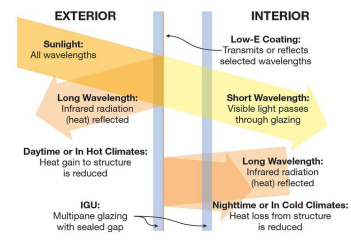
Solar Panels on the Roof



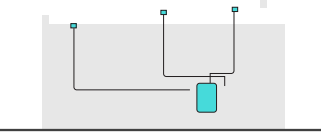
Storm Water Treatment



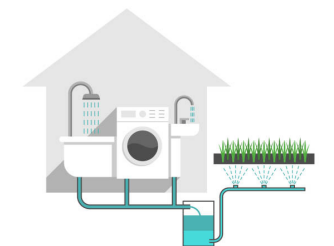
Onsite Rain Capture



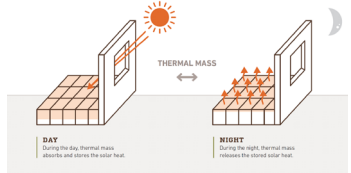
Low-E Coated Glass



Rain Capture System



Gray Water Irrigation Re-use

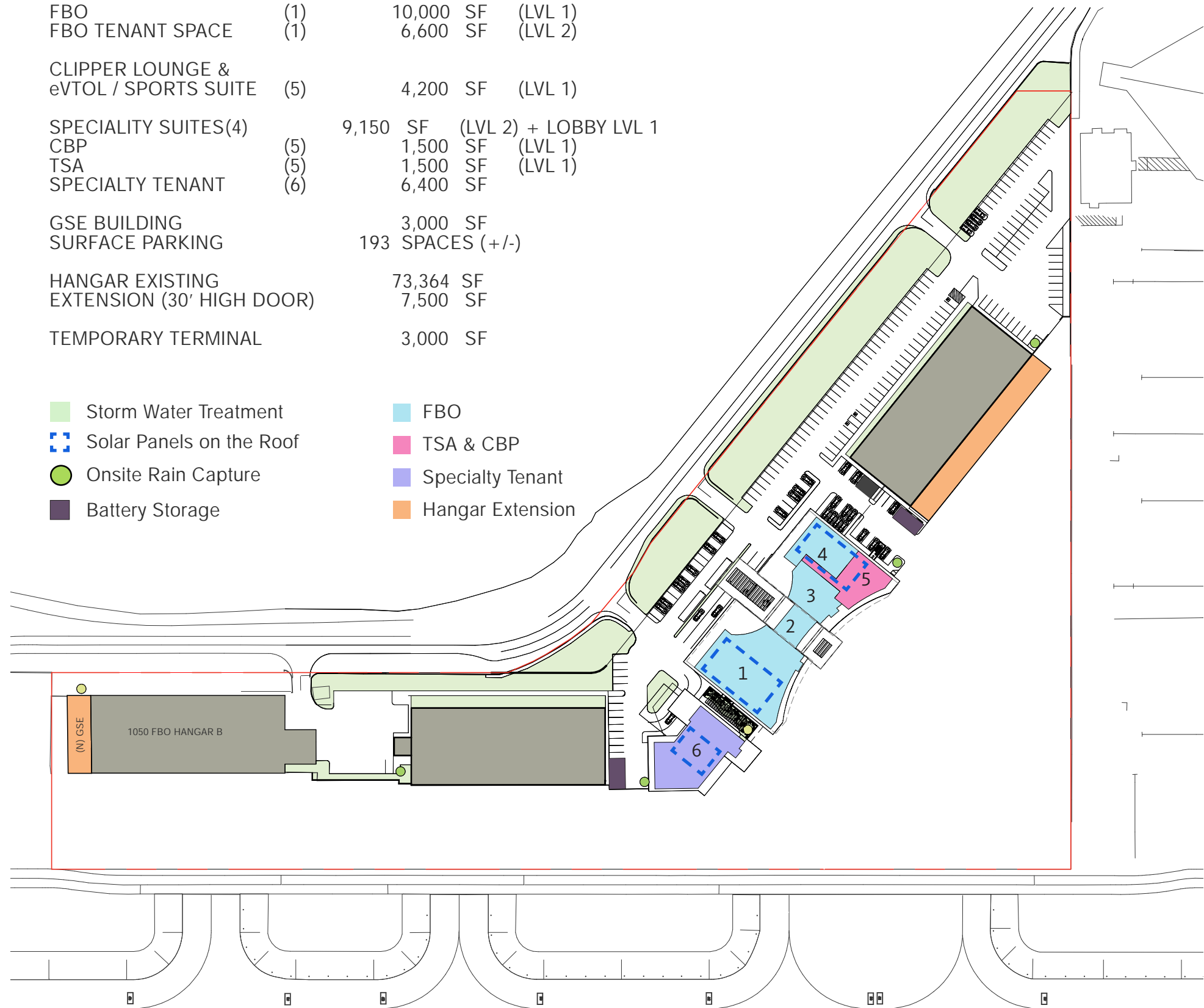


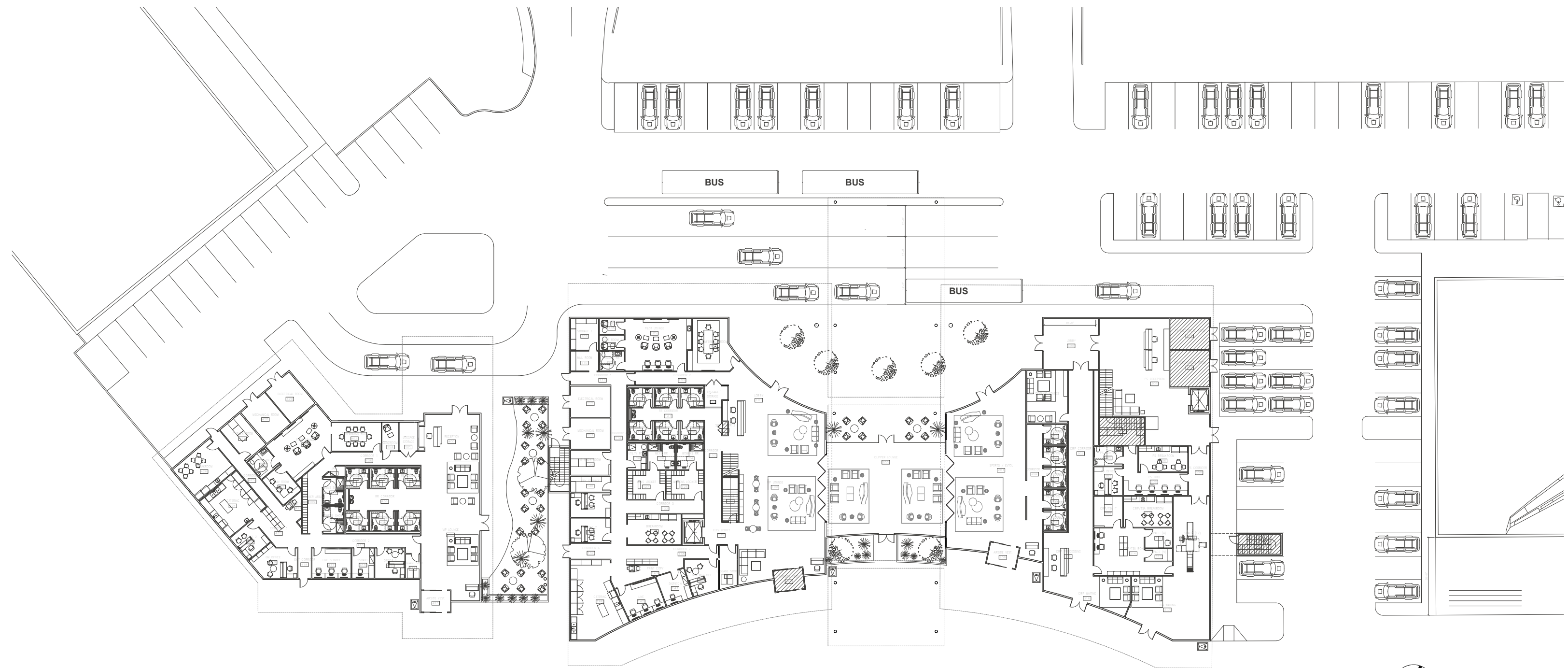
Thermal Mass

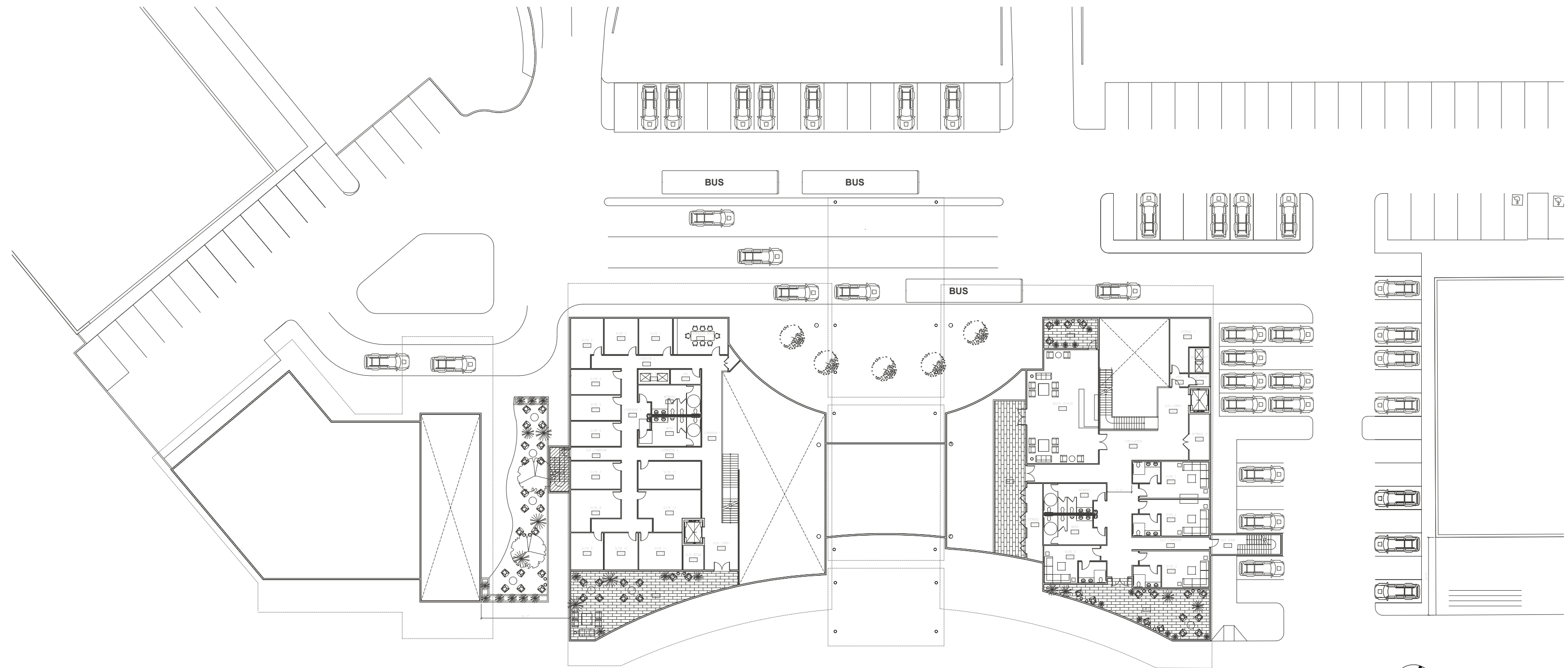
PROGRAM PROVIDED

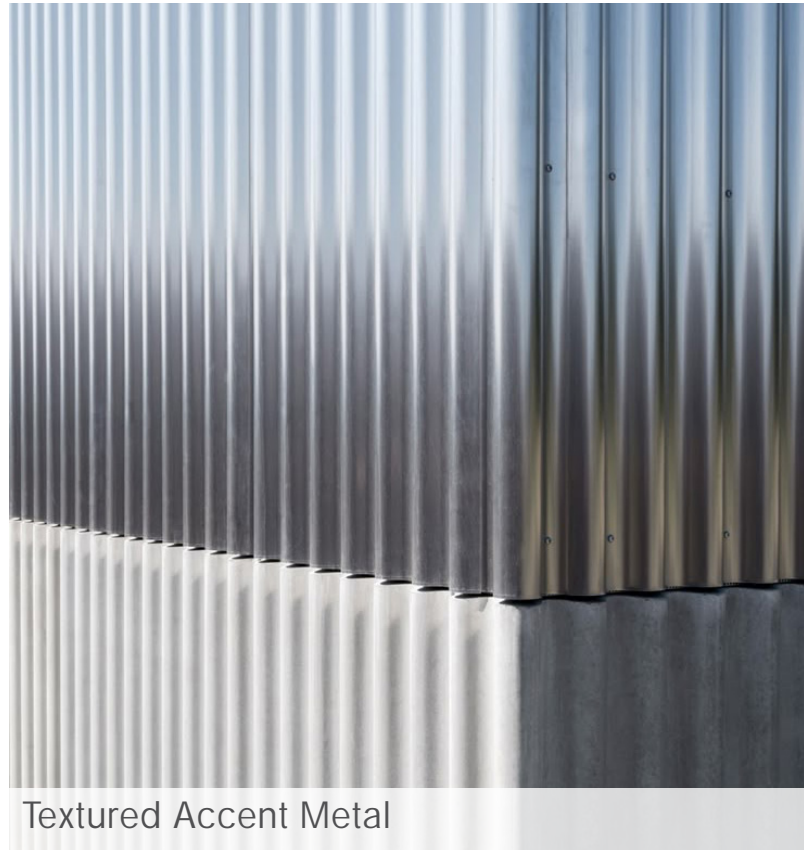
FBO	(1)	10,000 SF	(LVL 1)
FBO TENANT SPACE	(1)	6,600 SF	(LVL 2)
CLIPPER LOUNGE & eVTOL / SPORTS SUITE	(5)	4,200 SF	(LVL 1)
SPECIALITY SUITES(4)		9,150 SF	(LVL 2) + LOBBY LVL 1
CBP	(5)	1,500 SF	(LVL 1)
TSA	(5)	1,500 SF	(LVL 1)
SPECIALTY TENANT	(6)	6,400 SF	
GSE BUILDING		3,000 SF	
SURFACE PARKING		193 SPACES (+/-)	
HANGAR EXISTING		73,364 SF	
EXTENSION (30' HIGH DOOR)		7,500 SF	
TEMPORARY TERMINAL		3,000 SF	

- Storm Water Treatment
- FBO
- TSA & CBP
- Onsite Rain Capture
- Specialty Tenant
- Battery Storage
- Solar Panels on the Roof
- Hangar Extension

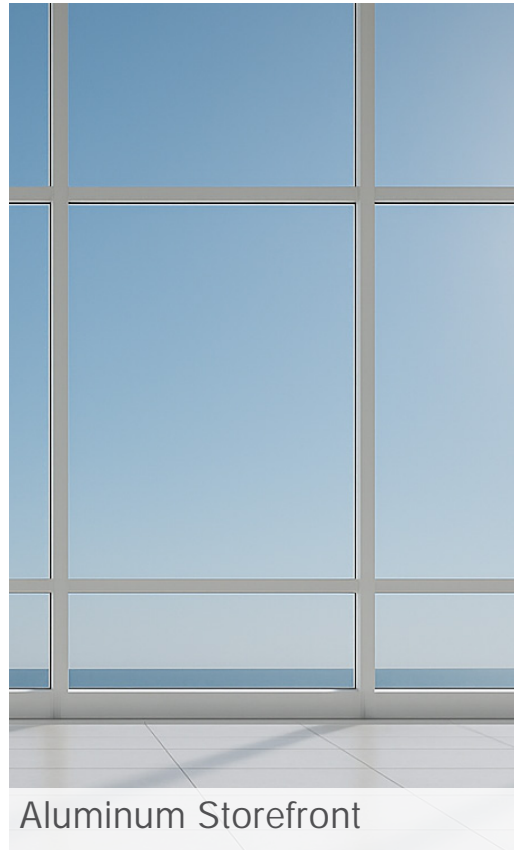








Textured Accent Metal



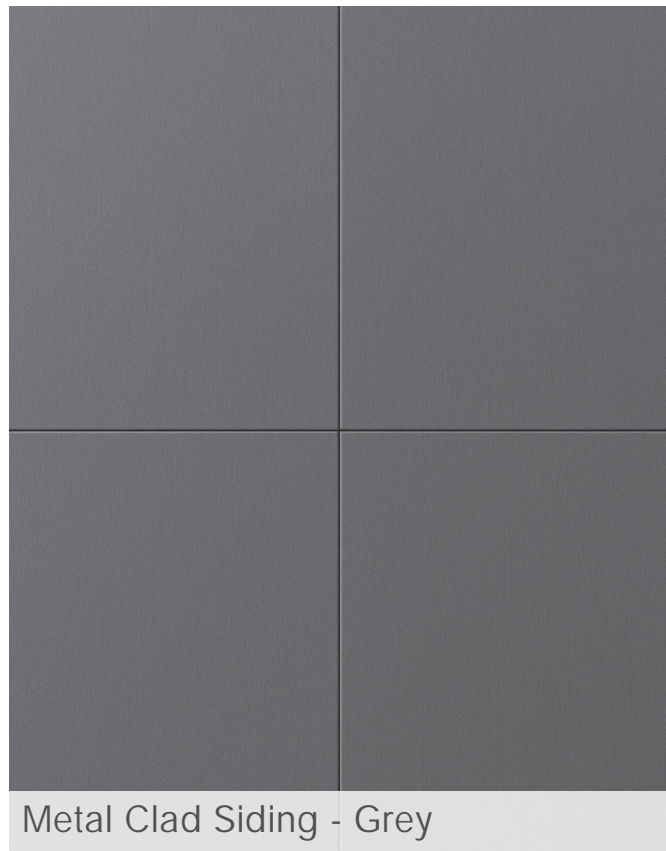
Aluminum Storefront



Canopy Inspiration



Landscape Inspiration



Metal Clad Siding - Grey



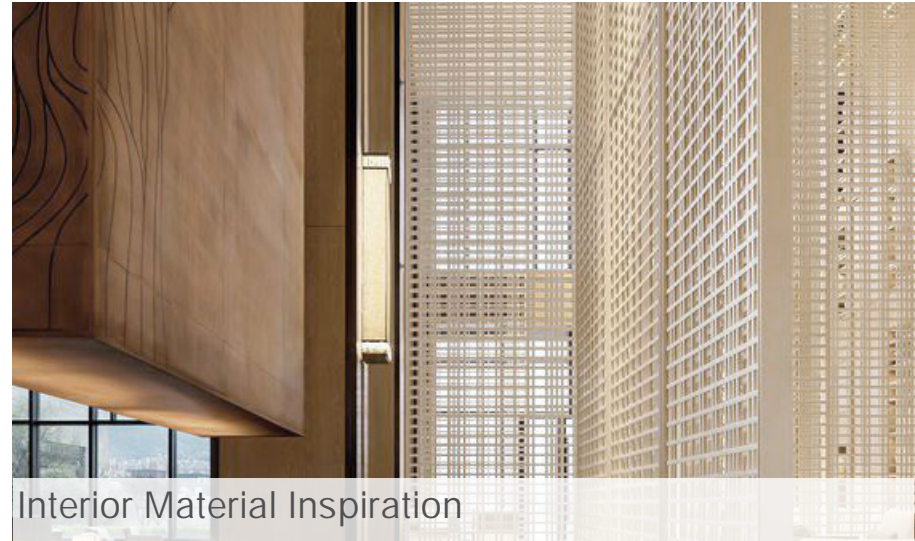
Wood Clad Exterior Ceiling



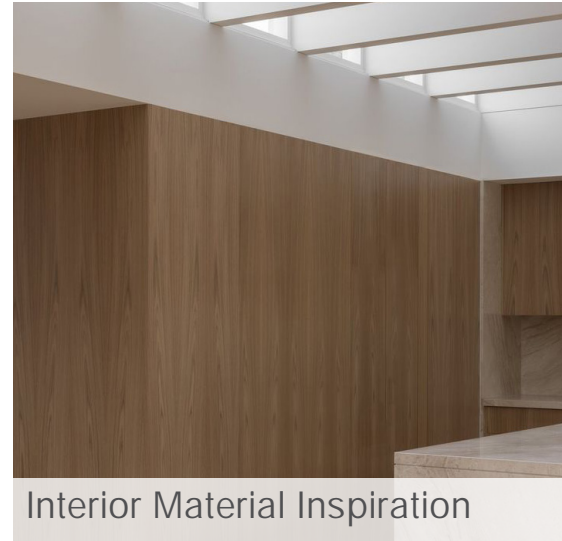
Exterior Building Inspiration



Exterior Concrete Sidewalk



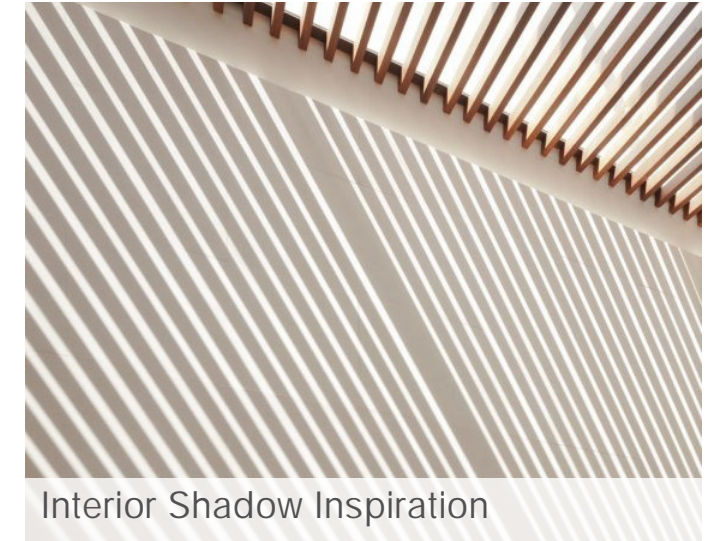
Interior Material Inspiration



Interior Material Inspiration



Interior Lighting Inspiration



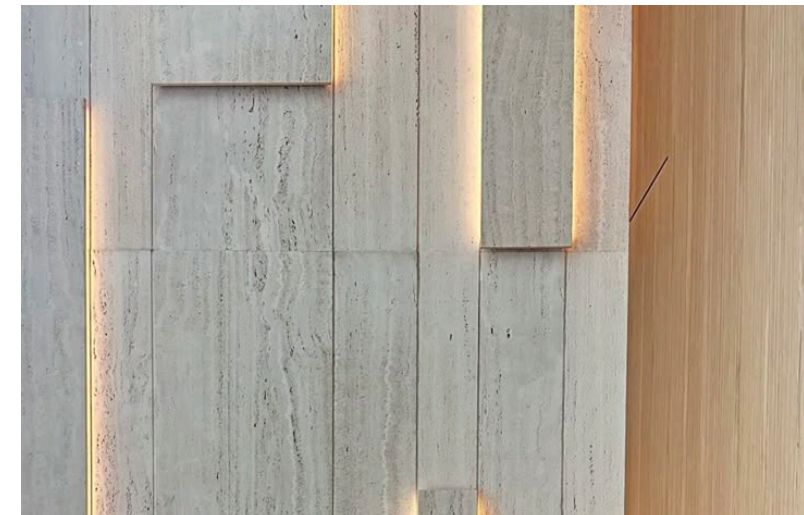
Interior Shadow Inspiration



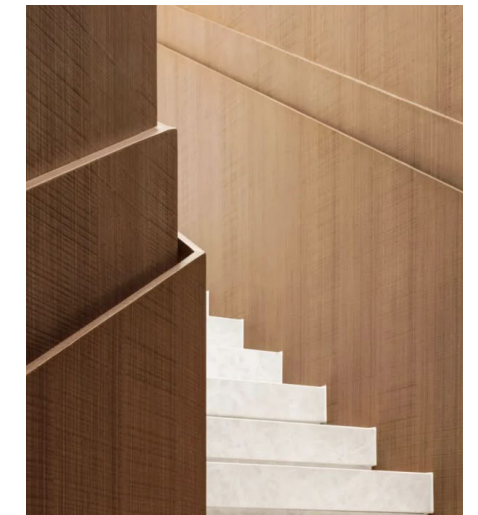
Travertine Stone Walls



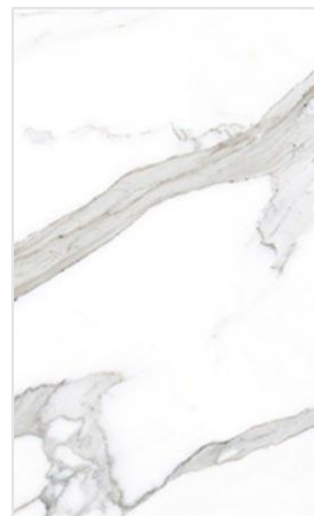
Furniture Inspiration



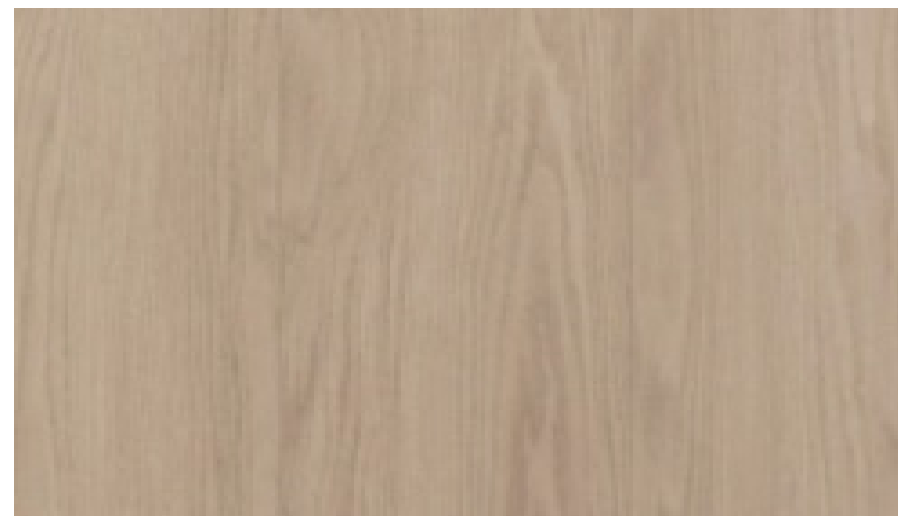
Textured Accent Wall



Stairway Inspiration



Marble Counters



White Oak Wood Walls and Ceilings



Interior Inspiration



Large Format Porcelain Floors















