

West Field Garage 2

Civic Design Review Committee - Phase 2: Design Development

Austin-Webcor JV | Corgan-Kuth Ranieri JV


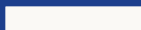

02.19.2026

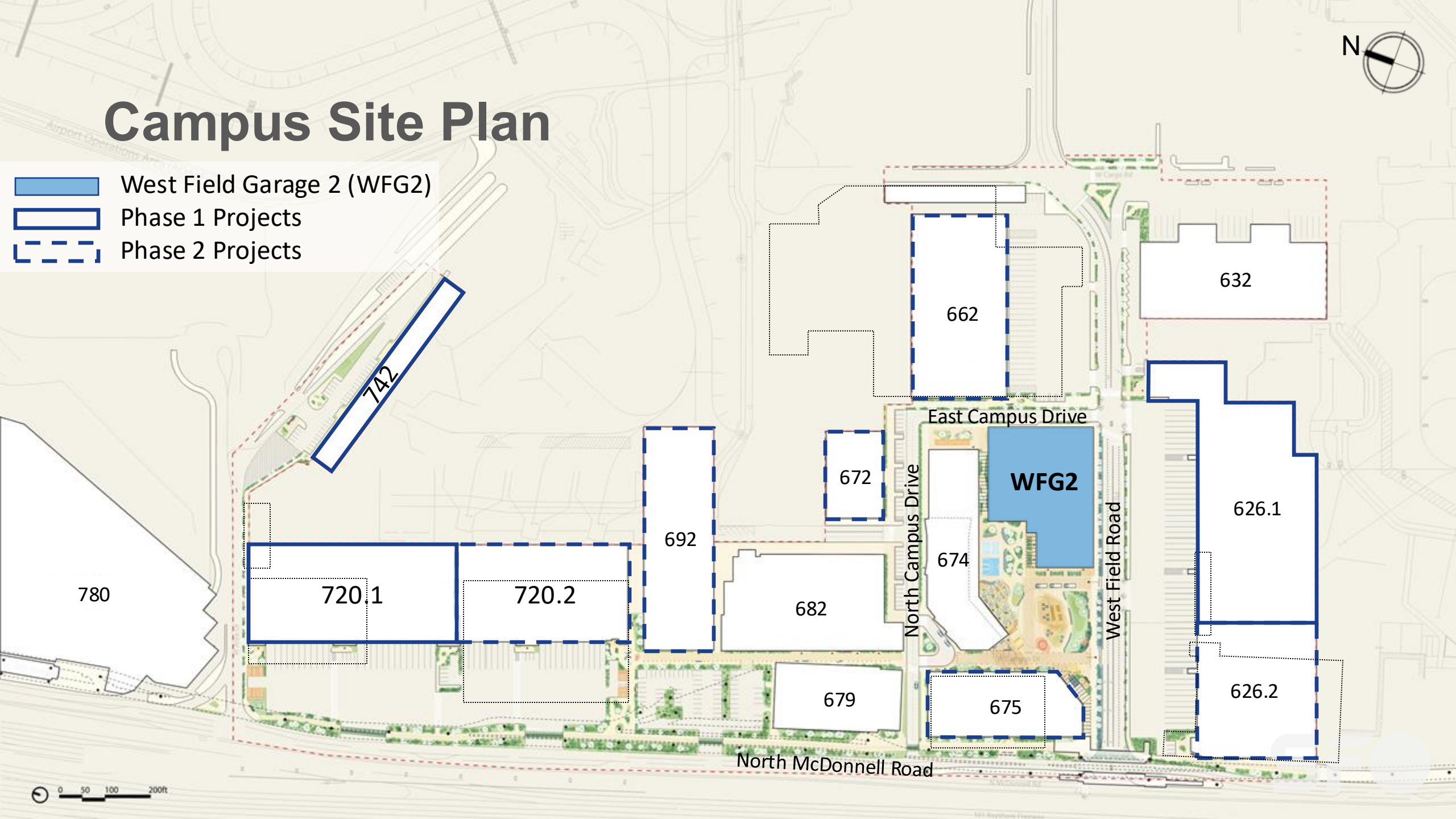
Project Evolution



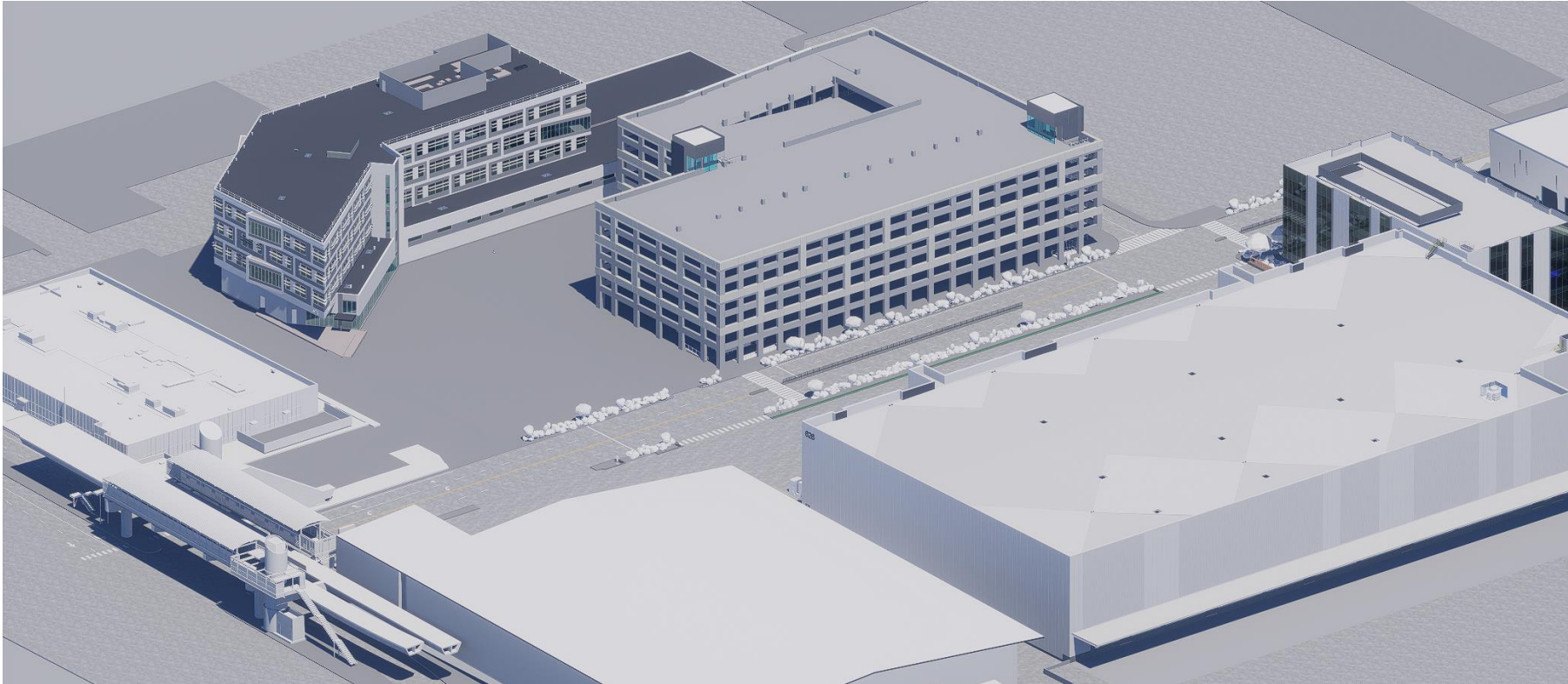


Campus Site Plan

-  West Field Garage 2 (WFG2)
-  Phase 1 Projects
-  Phase 2 Projects



Aerial View – from Southwest



Key Design Elements of WFG2

EXPERIENCE

The ceiling treatment, including at the lobbies brings warmth to the building



PLACEMAKING

The metal panel frames add consistency to the built edge of the campus heart



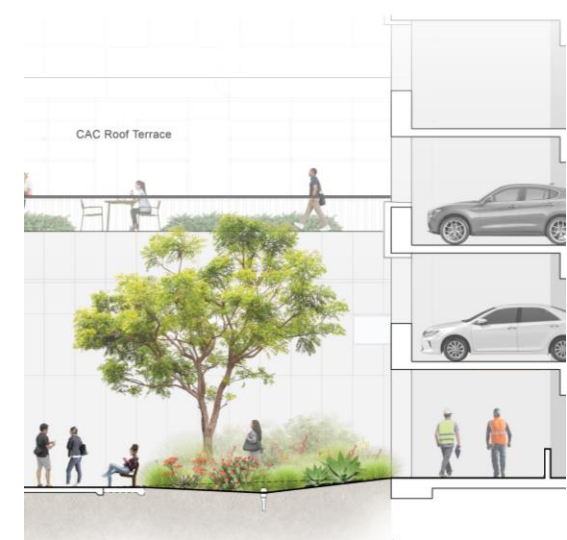
PERFORMANCE

Low carbon concrete and efficient parking layouts reduce the garage's impact



COMMUNITY

The covered walkway is an extension of the campus heart with shelter from rain



Public Art – Opportunities



Courtyard:
Phase 1, Medium Scale, Experiential

Example:
Clover by Kuth Ranieri + Branch
Technology



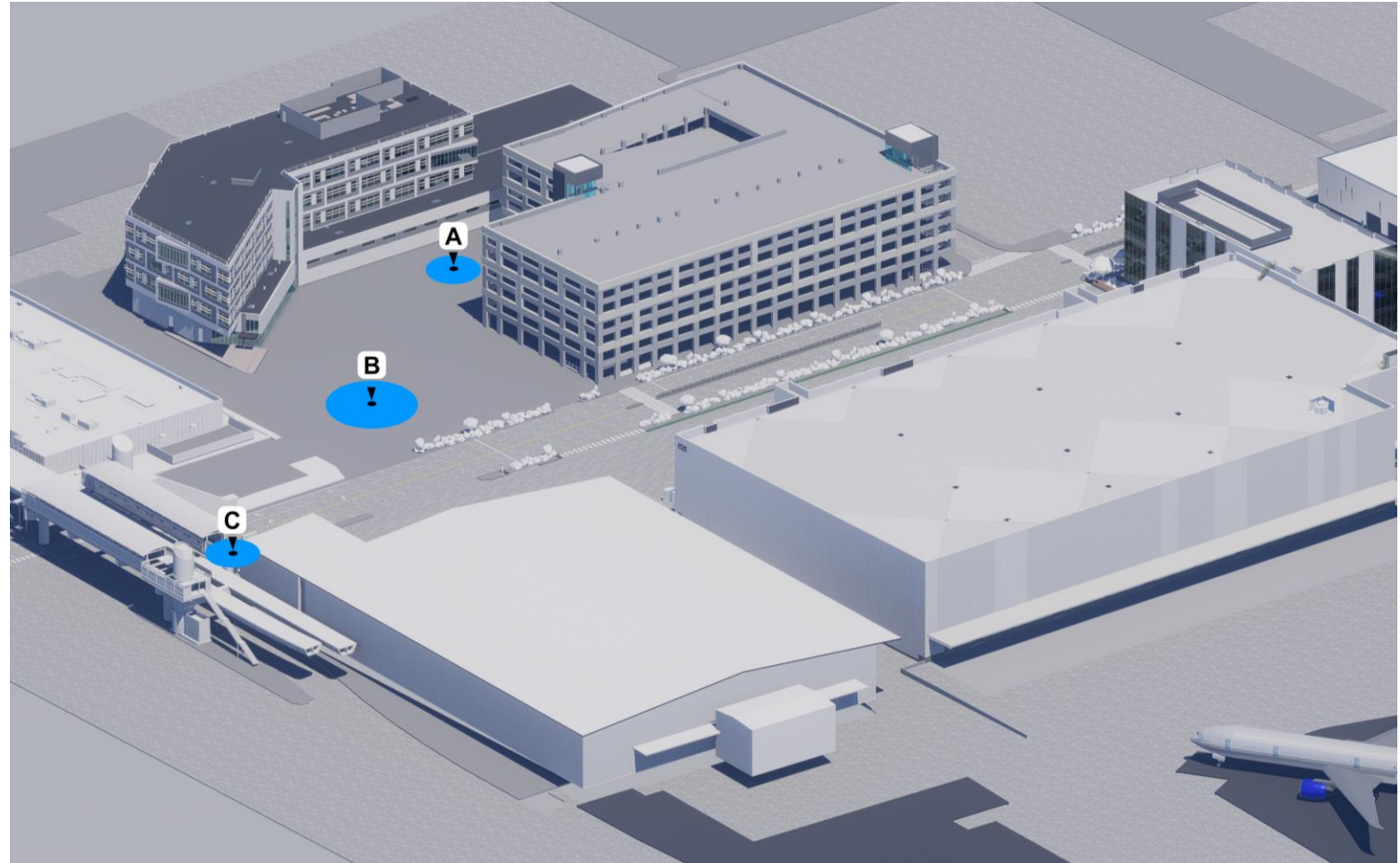
Campus Heart:
Phase 2, Large Scale, Monumental

Example:
Conquest of Space by Rufino
Tamayo

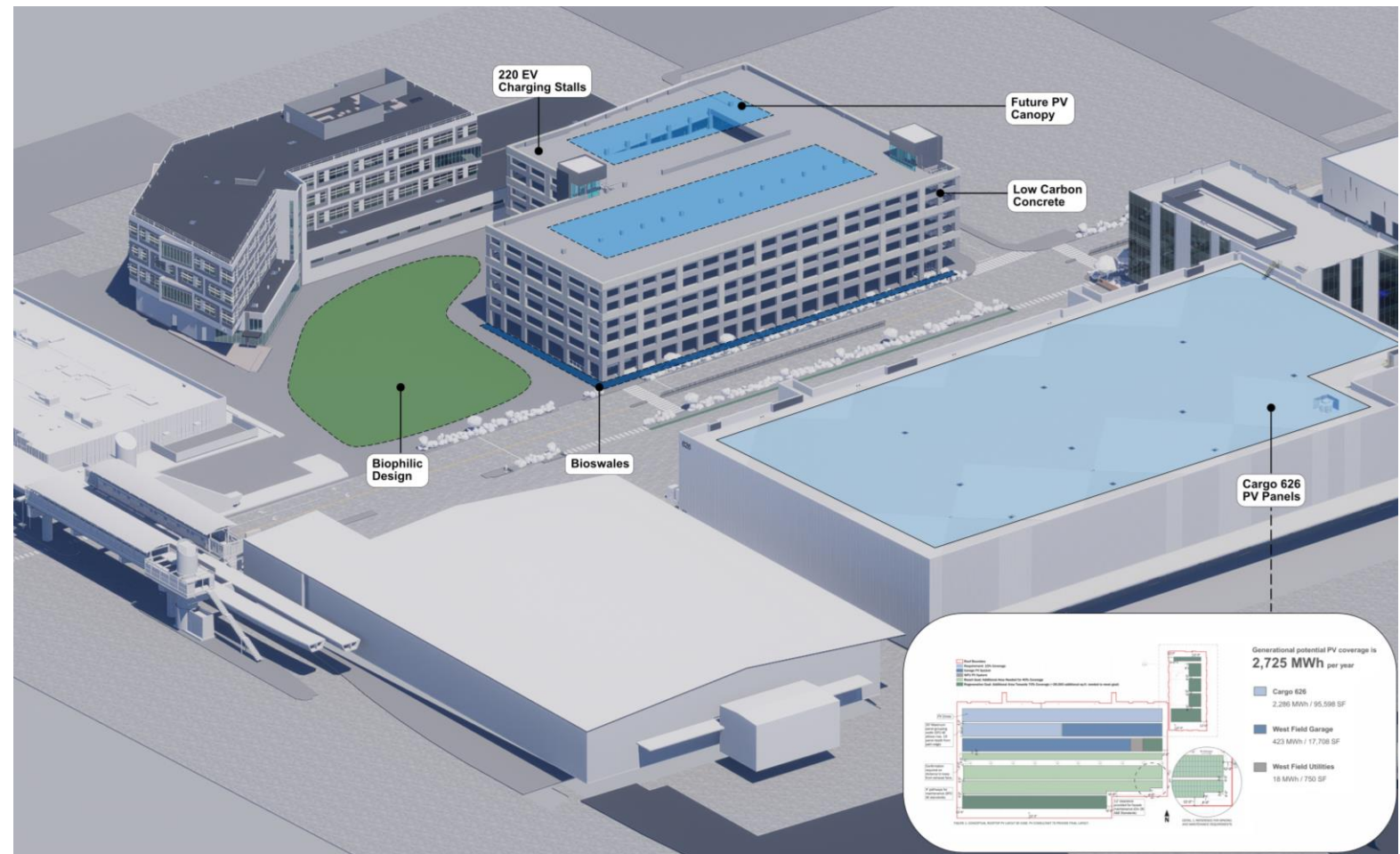
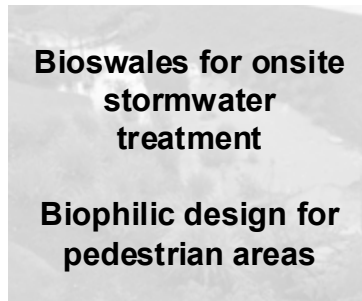


AirTrain:
Phase 2, Large Scale, Architectural

Example:
We Will Walk Right Up To The Sun
by Sarah Cain



Sustainability



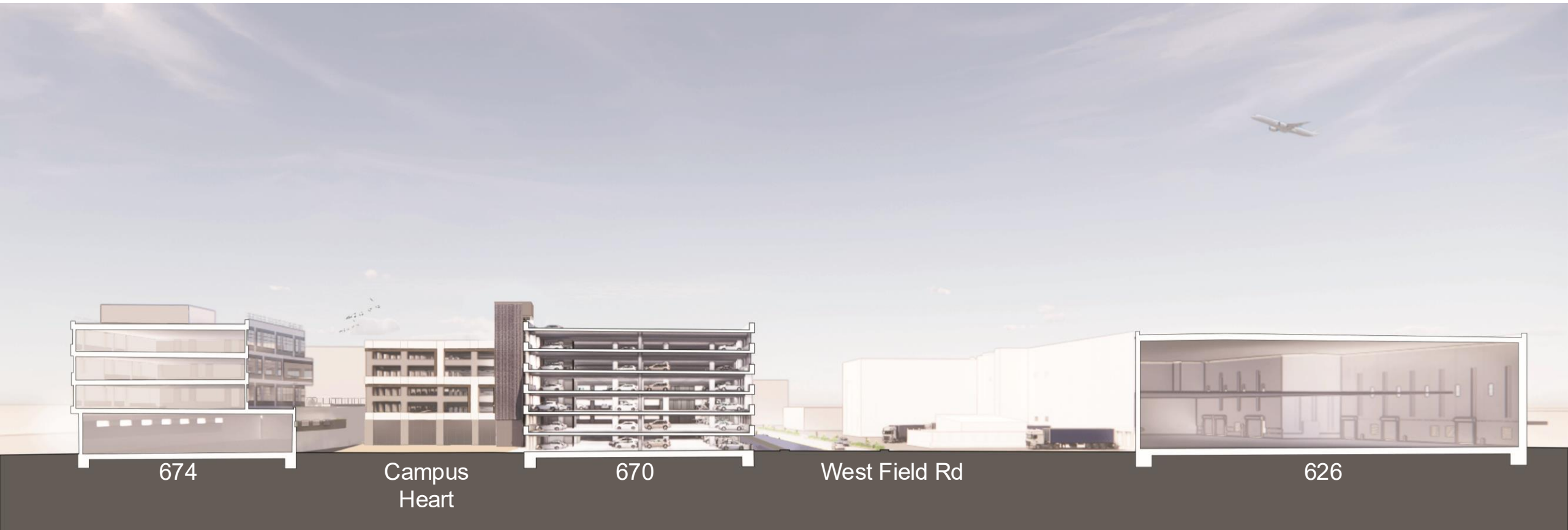
View from AirTrain



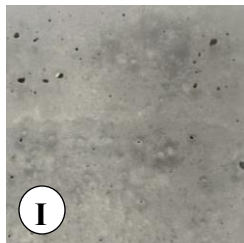
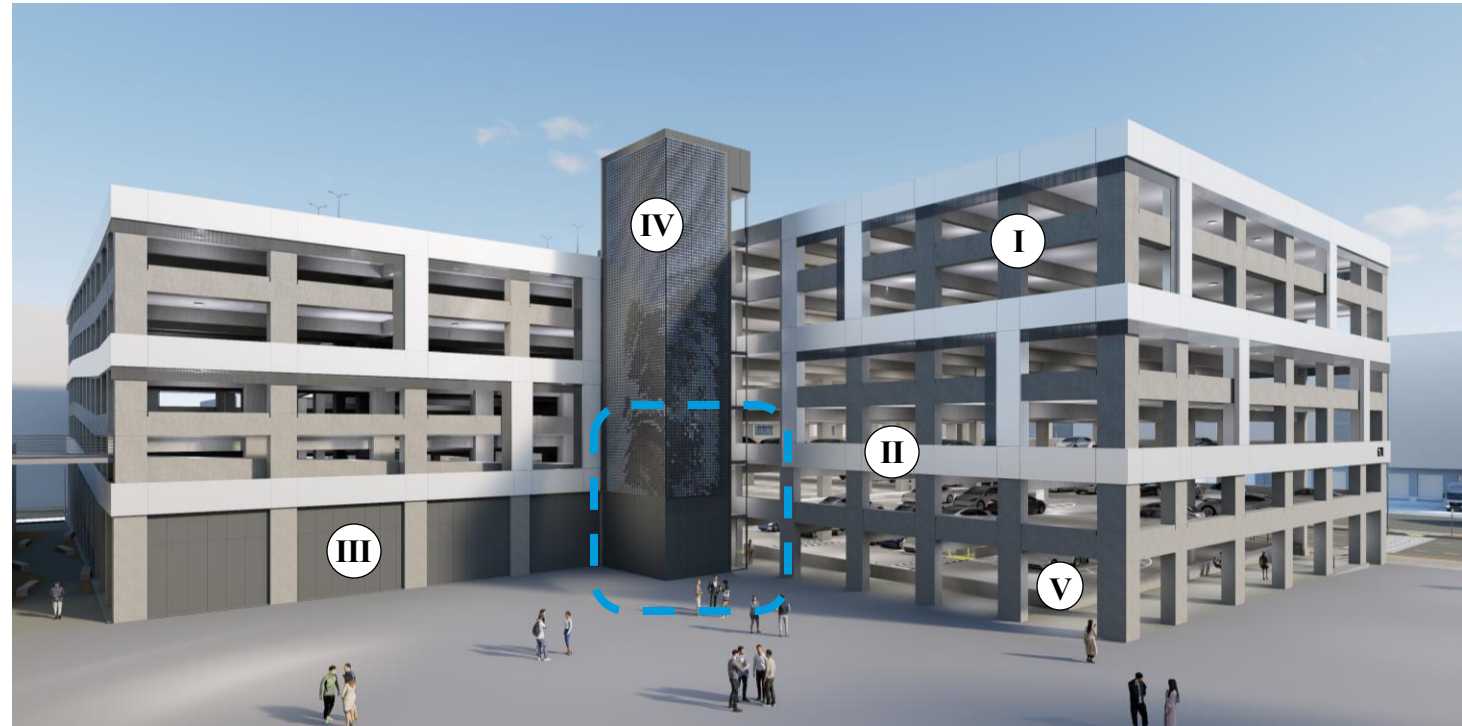
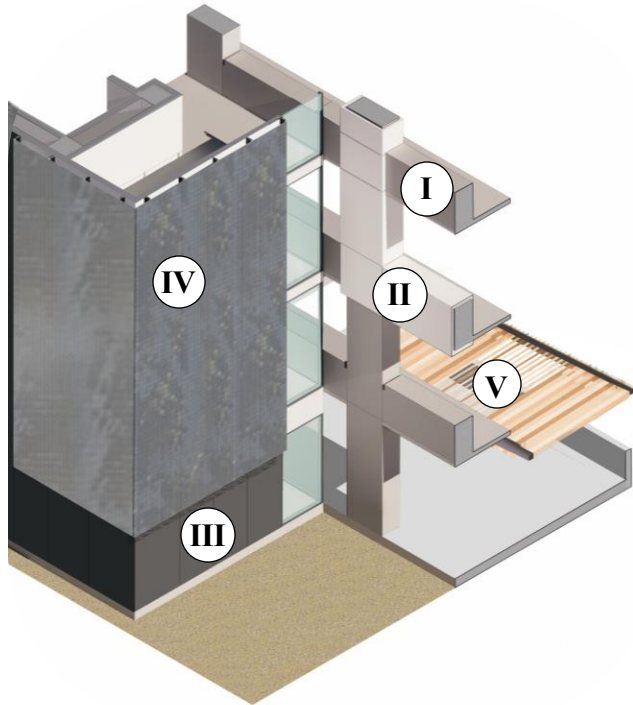
Overall Elevations



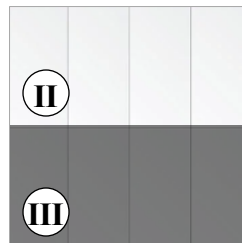
Overall Section



Material Palette

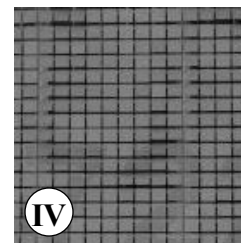


Cast-in-place
Concrete

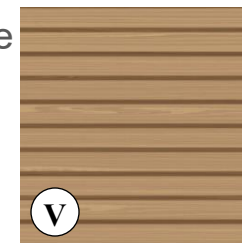


White Metal
Panel

Dark Grey
Metal Panel

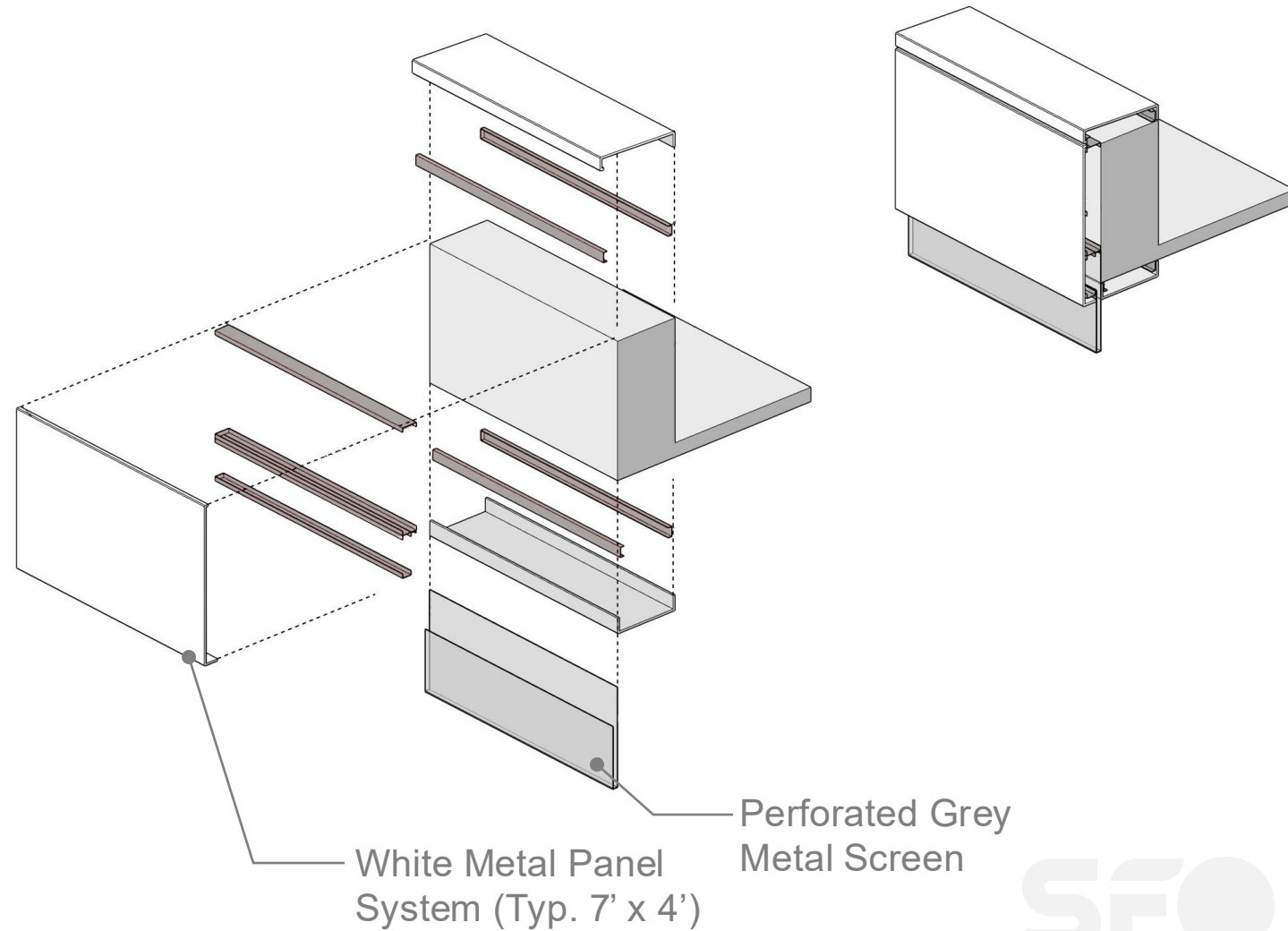
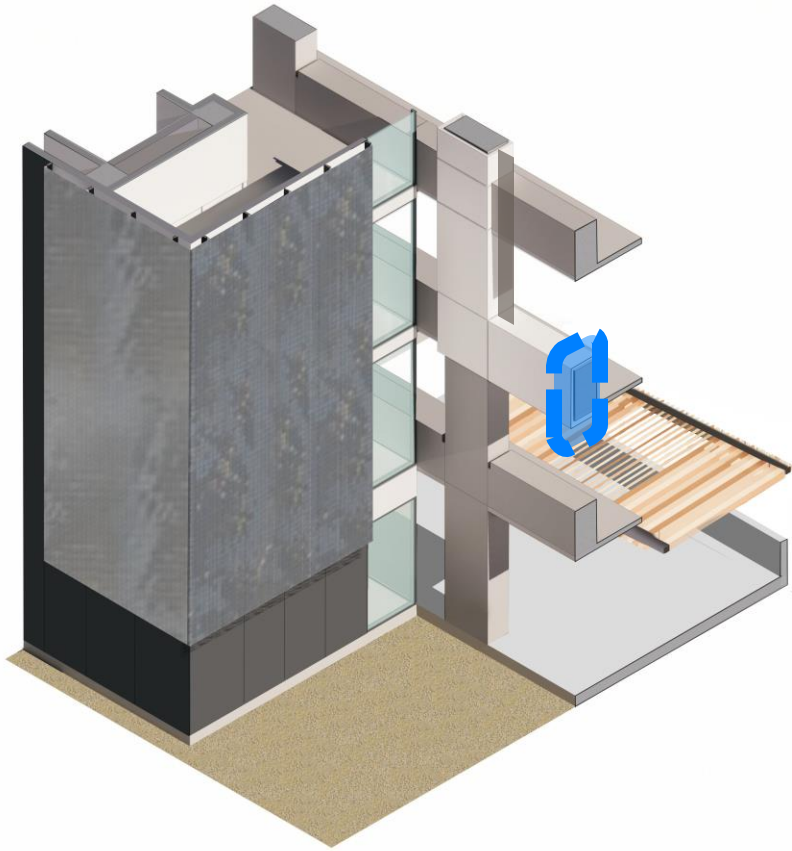


Kinetic Façade
System

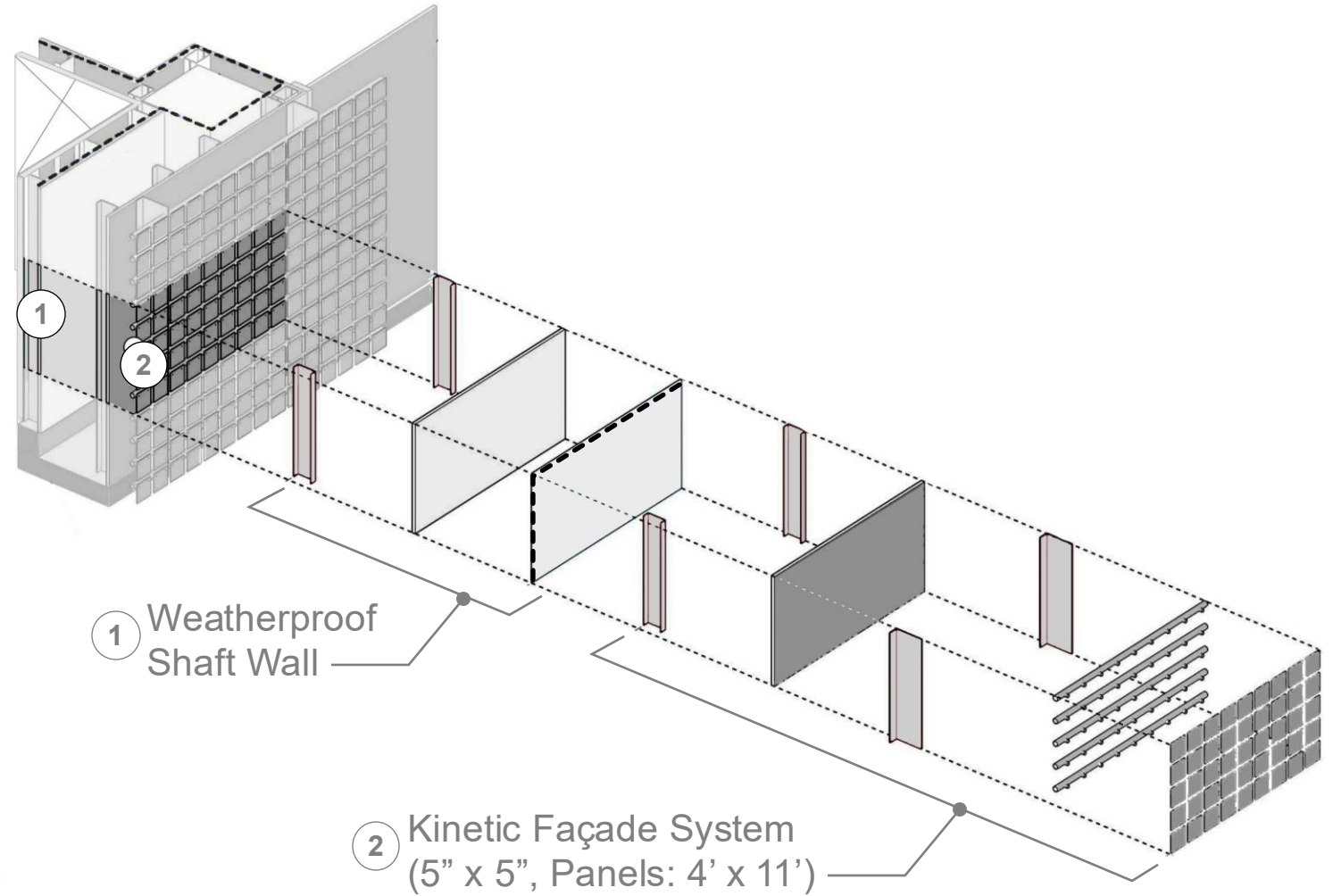
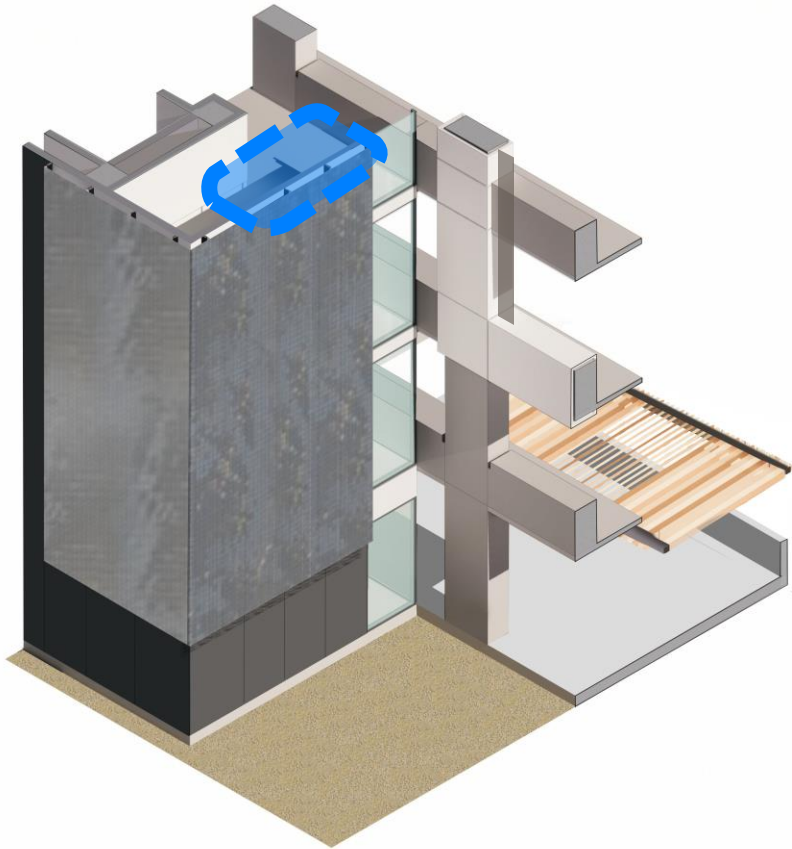


Wood-Look
Aluminum Soffit
System

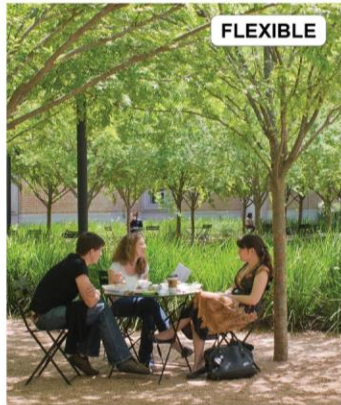
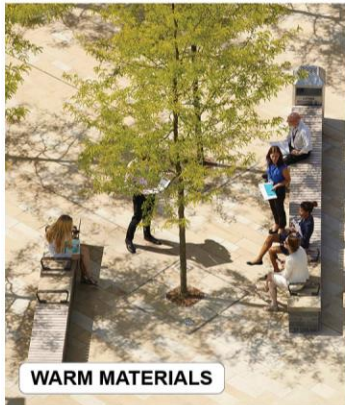
Metal Panel System



Kinetic Facades System



Campus Heart Character & Activation



Campus Heart Plant Palette

The conceptual plant palette for the Campus Heart blends West Field's existing succulent-focused vocabulary with colorful grasses and perennials that are primarily native to California.



STRUCTURAL SUCCULENTS (Desert Vocabulary)

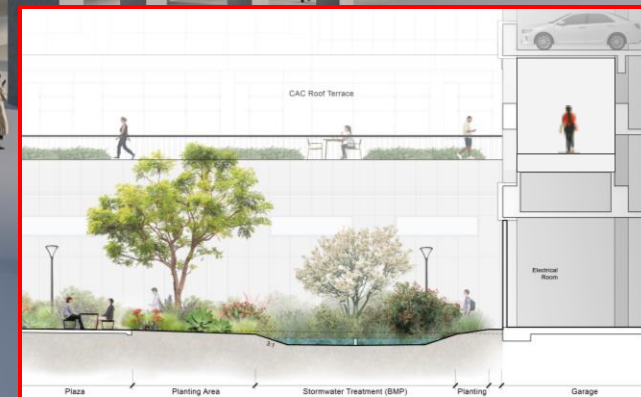
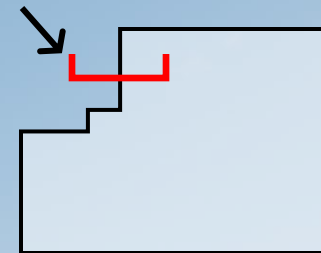


NATIVE-FOCUSED PLANTS (California Vocabulary)

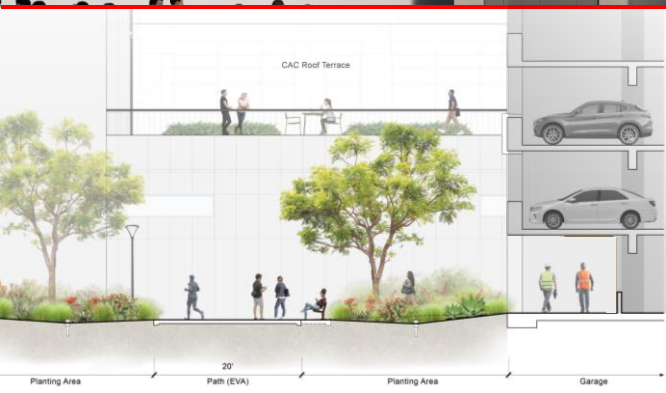
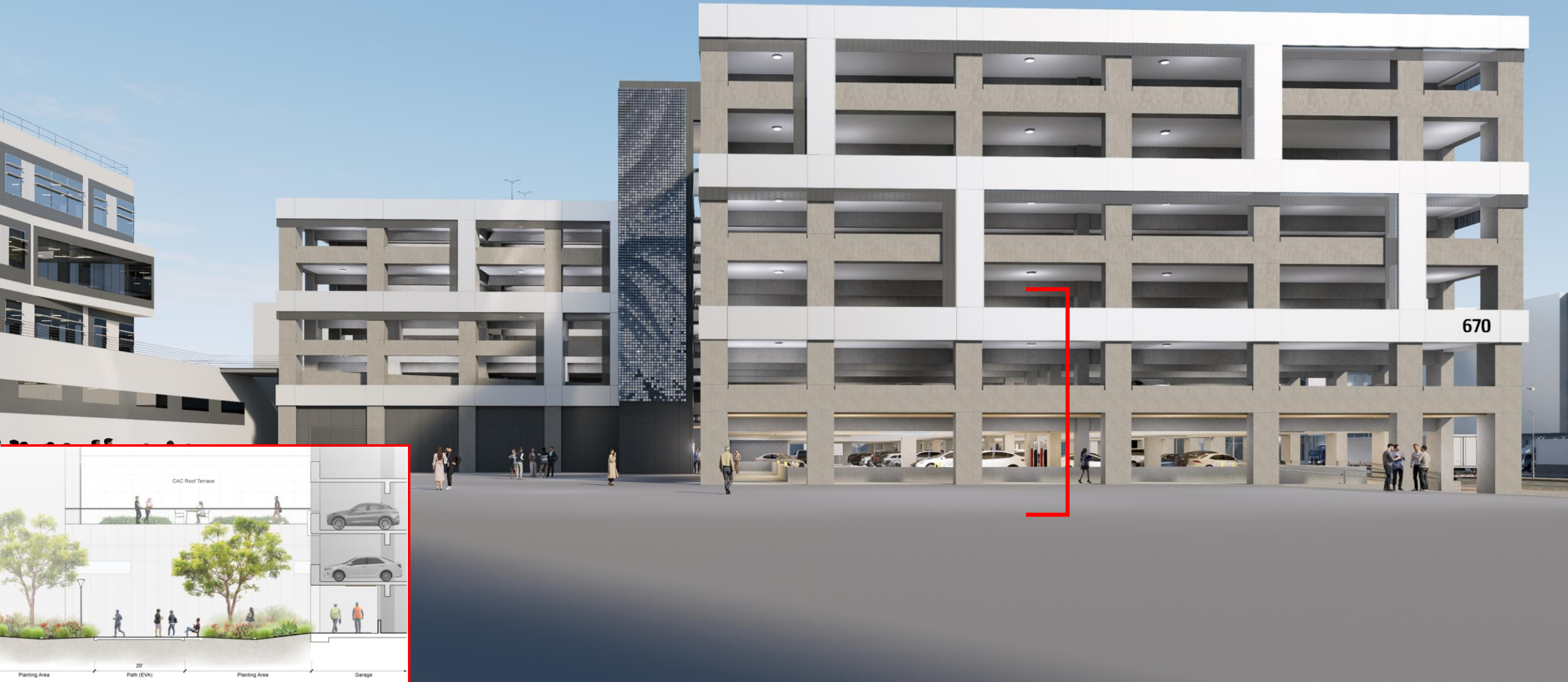
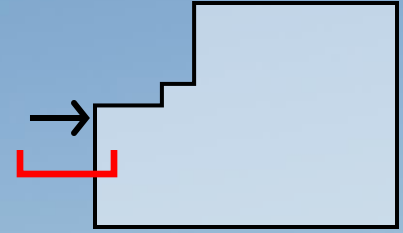


STORMWATER PLANTS (Seasonal Stream)

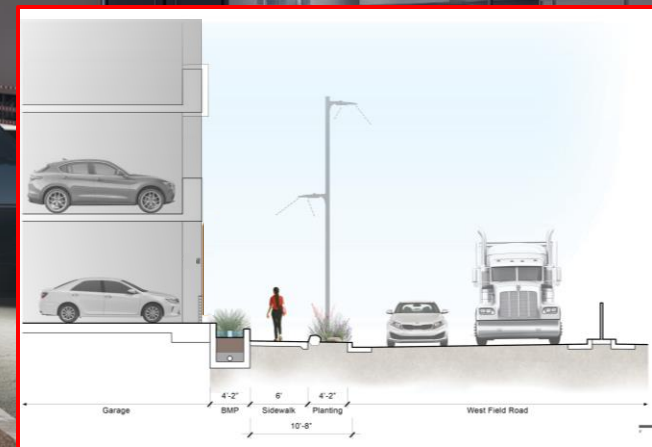
View from Offices



View from Campus Heart



View along South Facade



View from Cargo 626



Campus Circulation

3 Main Entries

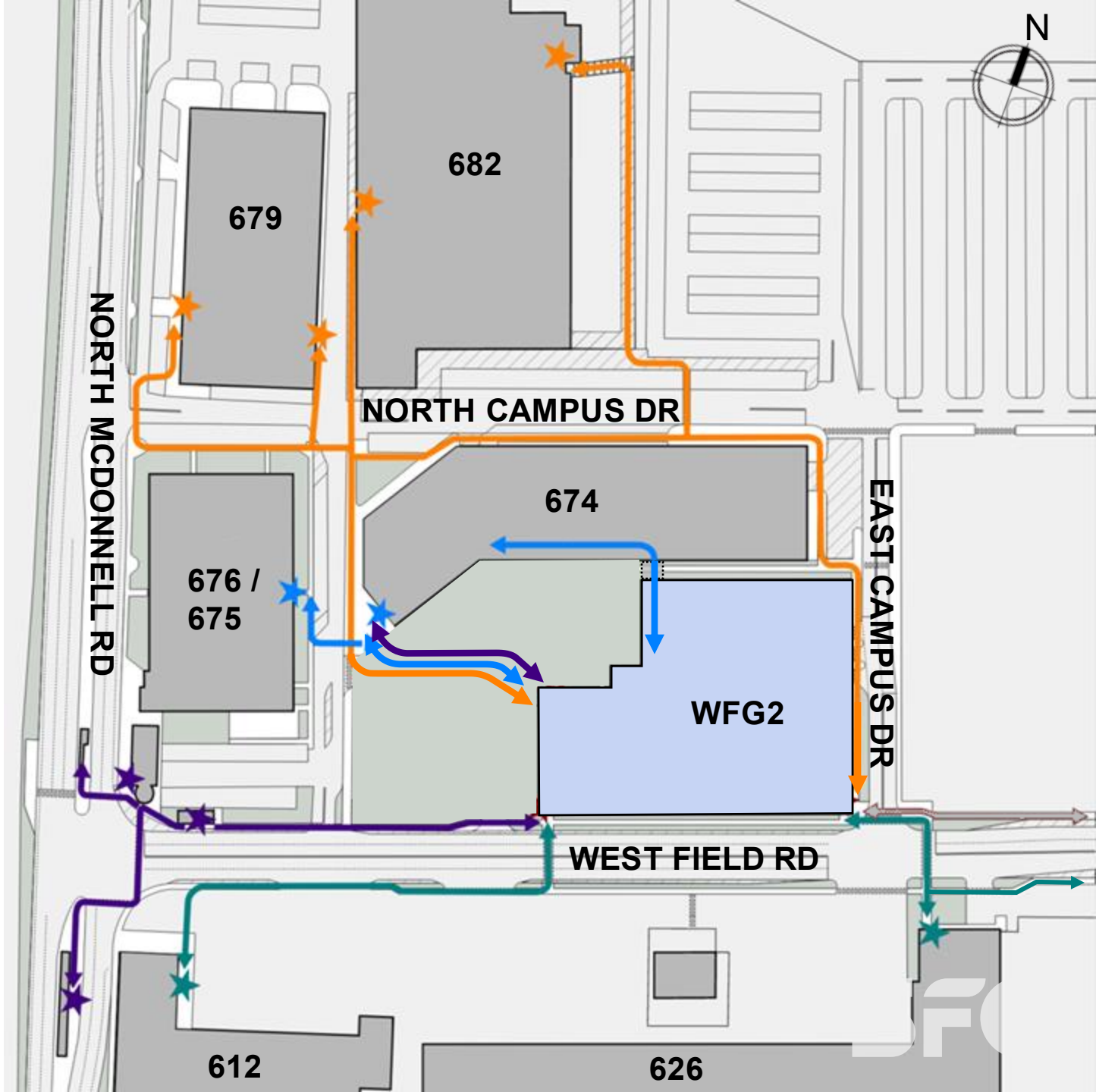
Southwest: AirTrain and 612

Southeast: 626, 632, and 638

Northwest: 674, 675, and 682

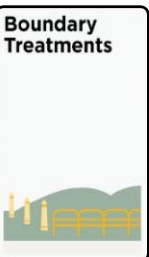
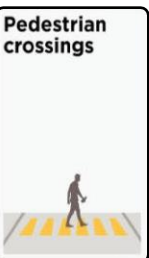
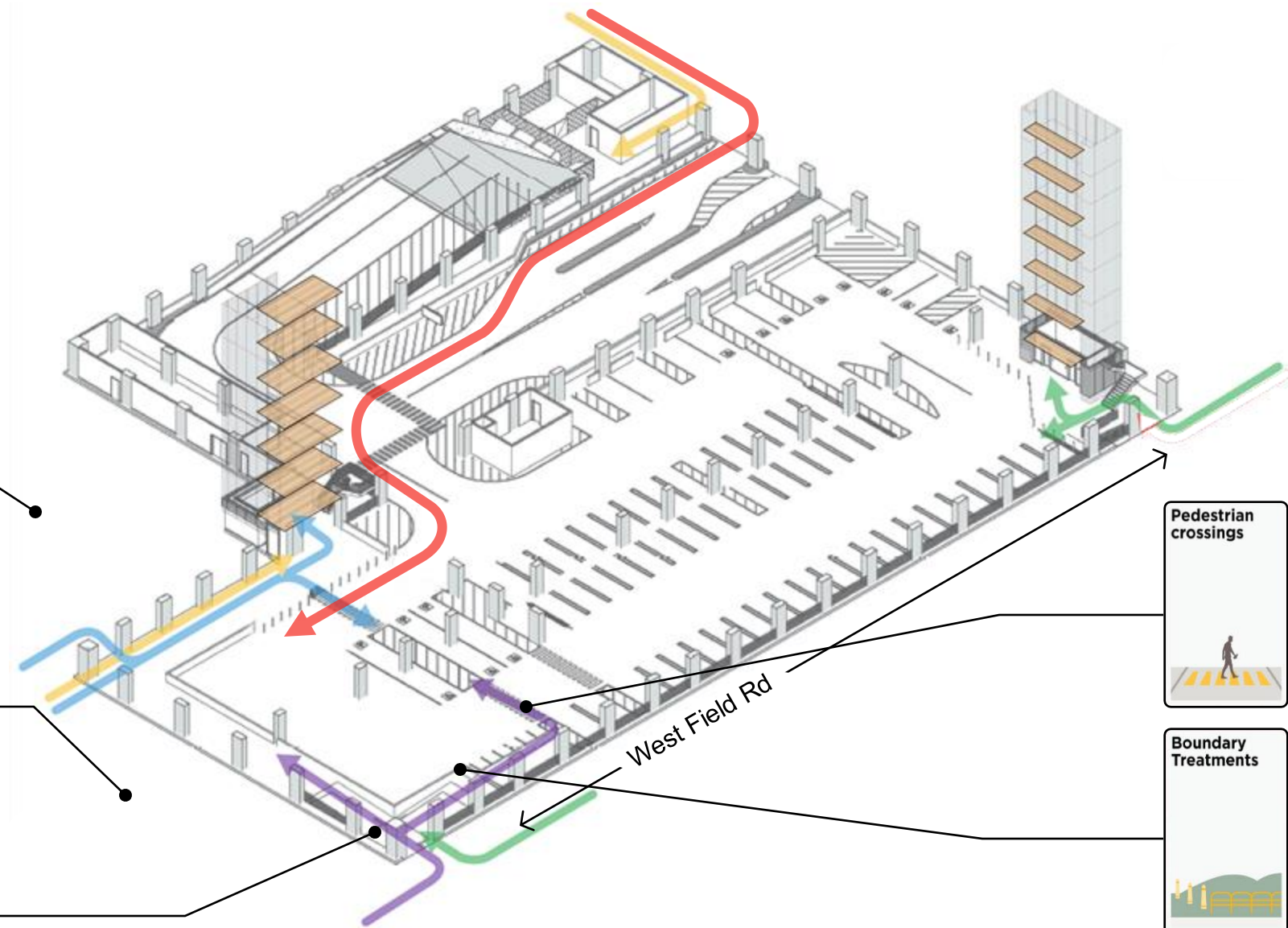
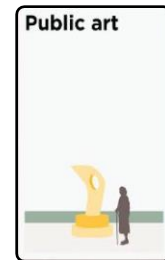
Additional Entry at L3 Bridge to 674

- Visitor
- Office
- Cargo
- Facilities / Shops

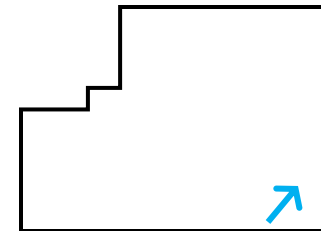


Building Flows

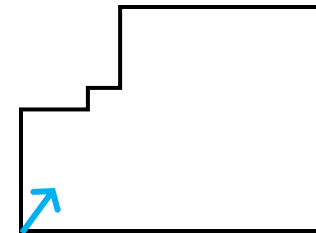
Pedestrian Flows separated from vehicles with controlled mix points



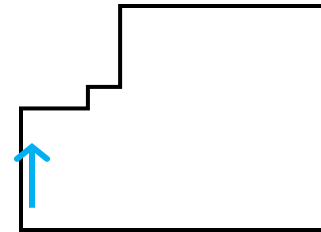
Elevator Lobby



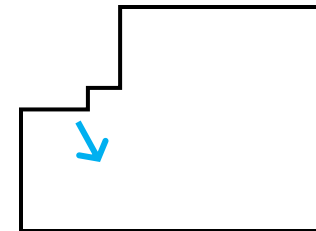
Southwest Entrance



Western Walkway



Central Crosswalk



Elevator Lobby

