

City & County of San Francisco
Daniel Lurie, Mayor



Office of the City Administrator
Carmen Chu, City Administrator
David Serrano Sewell, Executive Director
Office of the Chief Medical Examiner

January 21, 2026

Subject: Report on Drug and Alcohol Prevalence in Impaired Driving Casework – 2025

The enclosed report includes drug and alcohol prevalence data on blood samples received from Driving Under the Influence of Drugs and/or Alcohol (DUID) casework in the City and County of San Francisco for the year 2025. The reports are published by the Office of the Chief Medical Examiner (OCME), Forensic Laboratory Division, to further the OCME's mission to provide neutral data to inform policymakers.

Pertinent for the accurate use of this report is understanding the scope of testing leading to the summarization of the data. The OCME performs full and comprehensive testing on all DUID casework to mitigate bias, ensure a complete toxicological profile is provided for each case, and to determine the extent of alcohol and drugs exposure within the community. The OCME scope of testing for DUID casework meets and exceeds the national scope and sensitivity standards ([ASB Standard 120](#)) and recommendations ([NSC-ADID Recommendations](#)).

In 2025, the OCME consistently met the target of issuing final reports within 30 days for over 95% of cases, with 82% reported within 20 days.

Enclosed is a detailed DUID Data Report for 2025. Key findings were:

- The 722 cases received represent a 12% increase in submissions from the 647 cases received in 2024.
- With the implementation of a validated and novel [LC-QTOF-MS method technique](#), the Scope of Testing expanded from approximately 220 components to over 1000 components on every case routinely.
- One or more intoxicating substance was identified in 98% of cases.
- The OCME identified the presence of alcohol in 69%, cannabis in 45%, and impairing drugs in 66% of cases.
- Polysubstance use was the most common result of DUID casework, with 74% positive for any combination of alcohol, cannabis, and drugs.
- The new, novel and potent drugs, Phenazepam, Bromazepam, and Fluoro Fentanyl were present in 11 (2%), 9 (1%), and 10 (1%) cases, respectively.

Sincerely,

A handwritten signature in blue ink, appearing to read "Luke N. Rodda".

Luke N. Rodda, Ph.D. MRACI CChem
Chief Forensic Toxicologist and Director, Forensic Laboratory Division

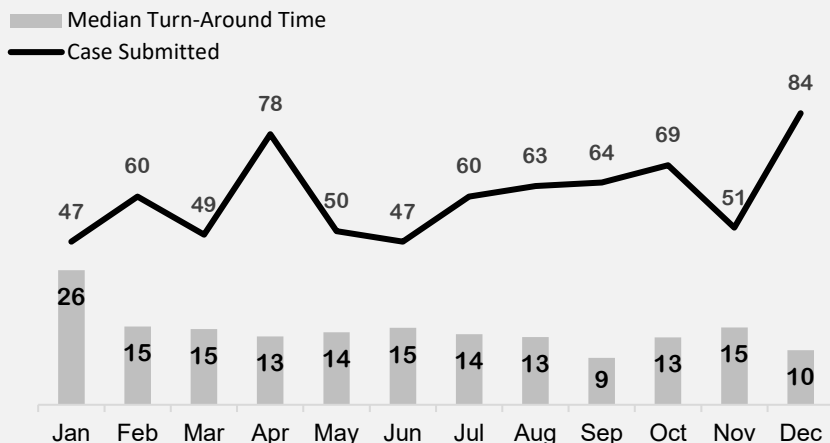
cc: Office of the City Administrator
enclosures: Driving Under the Influence of Drugs and/or Alcohol (DUID) Data Report – 2025



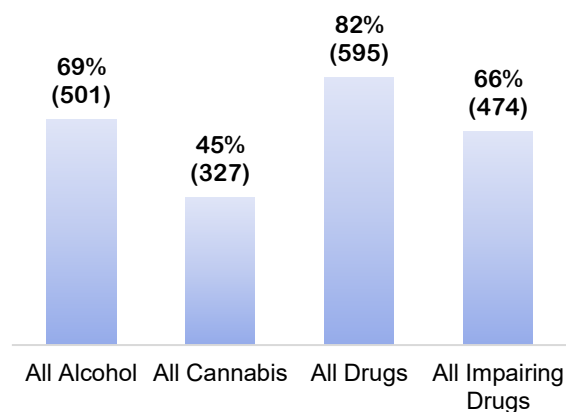
Driving Under the Influence of Drugs and/or Alcohol (DUID) 2025

722 Submitted Cases

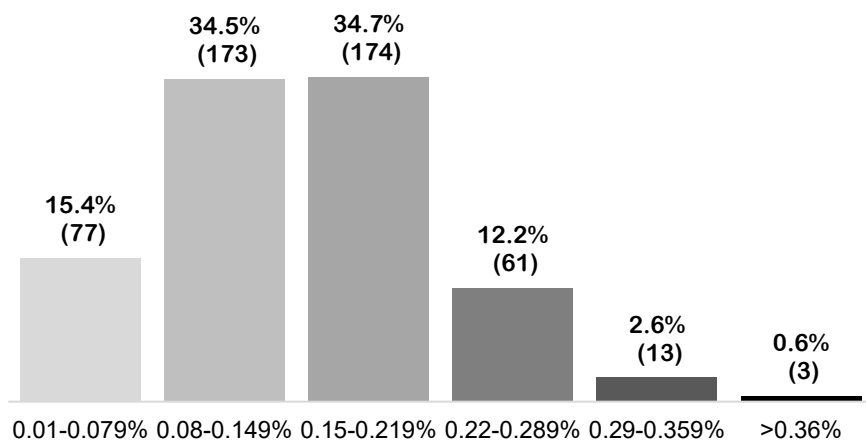
Case Submission by Month



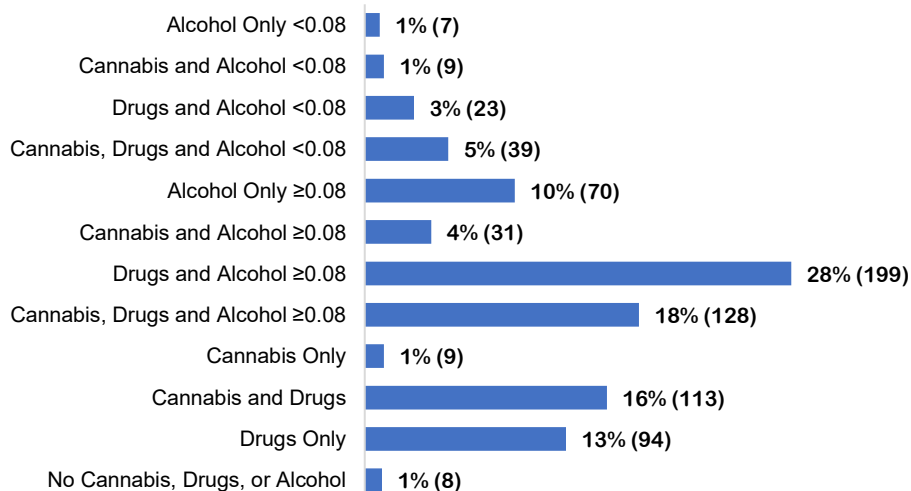
Alcohol, Cannabis, and Drugs Overview



Positive Blood Alcohol Concentrations



Polysubstance Use



Drug Class Prevalence Cases

Cannabinoids	45%	327
Amphetamines	25%	164 (14)
Cocaine	23%	163
Opioids	13%	83 (11)
Antihistamines	12%	76 (12)
Fentanyl	10%	73
Benzodiazepines	9%	48 (14)
Analgesics	8%	45 (13)
Antidepressants	8%	48 (9)
Anesthetics	7%	49
Dissociatives and Hallucinogens	7%	42 (6)
Anticonvulsants	5%	31 (5)
Phosphodiesterase Inhibitors	5%	18 (15)
Cardiacs	4%	18 (8)
Miscellaneous	3%	23
Antipsychotics	2%	17
Fentanyl Analogs	2%	11 (1)
Muscle Relaxants	2%	12
Opium Poppy Production Compounds	2%	12
Sleep Aids	1%	8
Antibiotics	1%	6
Z Drugs	1%	4
Stimulants	<1%	2
Barbiturates	<1%	1
Diabetics	<1%	1
Tobacco, Foods and Drinks, and Endogenous	62%	217 (228)

(#) Denotes where 2 or more of the same drug class was prevalent within same case.



Driving Under the Influence of Drugs and/or Alcohol (DUID)

2025

722 Submitted Cases

Drug Prevalence		Cases		Drug Prevalence		Cases	
Amphetamines							
	Methamphetamine	21%	153		Doxepin	<1%	2
	Amphetamine	18%	133		Nordoxepin	<1%	2
	4-Hydroxy Methamphetamine	8%	58		Buspirone	<1%	1
	N-Ethyl Amphetamine	5%	36		Citalopram	<1%	1
	Norephedrine / Norpseudoephedrine	2%	15		Nortriptyline	<1%	1
	3,4-Methylenedioxyamphetamine (MDMA)	2%	13		Paroxetine	<1%	1
	Ephedrine / Pseudoephedrine	1%	10	Antihistamines			
	3,4-Methylenedioxyamphetamine (MDA)	1%	7		Norchlorcyclizine	5%	33
	Methoxyphenamine / Mexiletine	<1%	2		Diphenhydramine	3%	23
	Methylphenidate	<1%	2		Doxylamine	3%	22
	Phentermine	<1%	2		Cetirizine / Levocetirizine	3%	21
	Ritalinic Acid	<1%	2		Promethazine	1%	10
Analgesics					Hydroxyzine	1%	7
	Salicylic Acid	19%	138		Chlorpheniramine	1%	4
	Acetaminophen	11%	78		Cetirizine	<1%	3
	Ibuprofen	3%	19		Meclizine	<1%	3
	Naproxen	1%	6		Loratadine	<1%	1
	Phenacetin	<1%	2		Promazine / Promethazine	<1%	1
	Ketoprofen	<1%	1	Antipsychotics			
	Sumatriptan	<1%	1		Norquetiapine	1%	6
Anesthetics					Haloperidol	1%	5
	Lidocaine	7%	49		Quetiapine	1%	5
	Norlidocaine	1%	9		7-Hydroxy Quetiapine	1%	4
	Etomidate	<1%	1		9-Hydroxy Risperidone	<1%	3
Antibiotics					Aripiprazole	<1%	2
	Metronidazole	<1%	3		Risperidone	<1%	1
	Quinolone	<1%	3		Ziprasidone	<1%	1
Anticonvulsants				Barbiturates			
	Gabapentin	3%	20		Phenobarbital	<1%	1
	Lamotrigine	1%	8	Benzodiazepines			
	Topiramate	1%	6		Alprazolam	3%	19
	Pregabalin	1%	5		4-Hydroxy Alprazolam	2%	11
	Valproic Acid	<1%	3		Phenazolam	2%	11
	Carbamazepine-10,11-Epoxy / Oxcarbazepine / Phenytoin	<1%	1		alpha-Hydroxy Alprazolam	1%	10
Antidepressants					Lorazepam	1%	10
	Citalopram / Escitalopram	2%	12		Nordiazepam	1%	10
	Trazodone	2%	11		7-Amino Clonazepam	1%	9
	Sertraline	1%	10		Bromazolam	1%	9
	Bupropion	1%	9		Clonazepam	1%	8
	Norsertaline	1%	9		Diazepam	1%	7
	Hydroxy Bupropion	1%	8		Midazolam	1%	7
	[erythro-/threo-]Hydrobupropion	1%	7		alpha-Hydroxy Midazolam	1%	6
	1-(3-Chlorophenyl)-Piperazine (McPP)	1%	7		Desalkyl Gidazepam	1%	5
	Desmethyl Citalopram	1%	6		Temazepam	1%	5
	Norfluoxetine	1%	6		4'-Chloro Deschloro Alprazolam / Alprazolam	<1%	3
	O-Desmethyl Venlafaxine / N-Desmethyl Venlafaxine	1%	5		Chlordiazepoxide	<1%	2
	Venlafaxine	1%	5		alpha-Hydroxy Etizolam	<1%	1
	Duloxetine	1%	4		Bromazepam	<1%	1
	Fluoxetine	1%	4		Oxazepam	<1%	1
	Mirtazapine	1%	4	Cannabinoids			
					Carboxy THC	43%	314



Driving Under the Influence of Drugs and/or Alcohol (DUID)

2025

722 Submitted Cases

Drug Prevalence		Cases	
	delta-8 Carboxy THC	4	
	delta-9 Carboxy THC	222	
	Unspecified Carboxy THC	88	
	Tetrahydrocannabinol (THC)	33%	241
	delta-8 Tetrahydrocannabinol (delta-8 THC)	2	
	delta-9 Tetrahydrocannabinol (delta-9 THC)	236	
	Unspecified Tetrahydrocannabinol (THC)	3	
	11-Hydroxy THC	26%	188
	Tetrahydrocannabinol Acid (THCA)	24%	176
	Tetrahydrocannabivarinic Acid (THCVA)	21%	150
	Cannabigerolic Acid (CBCGA)	1%	9
	Cannabichromene (CBC)	1%	8
	Cannabigerol (CBG)	1%	8
	Cannabidiol (CBD)	1%	4
	Cannabinol (CBN)	1%	4
	Cannabinolic Acid (CBNA)	<1%	3
	Cannabichromene (CBC) / Tetrahydrocannabinol (THC)	<1%	2
	9R-Hexahydrocannabinol (HHC)	<1%	1
	Cannabidiolic Acid (CBDA)	<1%	1
	Cannabinodiol (CBND)	<1%	1
	Hexahydrocannabinol (HHC)	<1%	1
Cocaine	Benzoylecgonine	21%	149
	Cocaine	19%	138
	Ecgonine	10%	71
	Cocaethylene	9%	66
	meta-Hydroxy Cocaine / para-Hydroxy Cocaine	8%	60
	Anhydroecgonine Methyl Ester	5%	38
	Norcocaine	5%	38
	Ecgonine Methyl Ester (EME)	5%	33
	meta-Hydroxy Cocaine	4%	28
	para-Hydroxy Cocaine	1%	6
Diabetics	Glipizide	<1%	1
Dissociatives and Hallucinogens	Norketamine	3%	25
	Ketamine	3%	22
	Hydroxy Norketamine	2%	17
	gamma-Hydroxybutyric Acid (GHB)	1%	4
	Lysergic Acid Diethylamide (LSD)	1%	4
	Phencyclidine (PCP)	<1%	2
	Psilocin	<1%	2
	Psilocybin	<1%	2
	5-Hydroxy N-Methyl Tryptamine	<1%	1
	Deschloro N-Ethyl Ketamine	<1%	1
	N,N-Dimethyltryptamine (DMT)	<1%	1
	Fentanyl	10%	69
	Norfentanyl	8%	56
	4-Anilino N-Phenethylpiperidine (4-ANPP)	5%	35
	beta-Hydroxy Fentanyl	5%	33
Drug Prevalence		Cases	
	N-Methyl Norfentanyl	4%	30
	Phenethyl 4-ANPP	3%	24
	4-Anilino piperidine (4-AP)	3%	20
Fentanyl Analogs	Acetyl Fentanyl	2%	12
	[meta-/ortho-/para-]Fluoro Fentanyl	1%	8
	Acetyl Norfentanyl	<1%	3
	[3'-/4'-/meta-/ortho-/para-]Fluoro Fentanyl	<1%	2
	Despropionyl para-Fluoro Fentanyl	<1%	2
	para-Fluoro Norfentanyl	<1%	2
	[2'-/3'-/4'-/cis-3-/trans-3-/4-/alpha-/beta-/meta-/ortho-/para-]Methyl Fentanyl / Butyryl Fentanyl / Isobutyryl Fentanyl	<1%	1
	Despropionyl meta-Methyl Fentanyl / Despropionyl ortho-Methyl Fentanyl / Isobutyryl Norfentanyl	<1%	1
Miscellaneous	Ondansetron	1%	7
	Levamisole	1%	5
	Finasteride	<1%	3
	Guaifenesin	<1%	2
	Tetrahydrozoline	<1%	2
	Varenicline	<1%	2
	Yohimbine	<1%	1
Muscle Relaxants	N-Desmethyl Cyclobenzaprine	1%	7
	Cyclobenzaprine	1%	4
	Meprobamate	1%	4
	Carisoprodol	<1%	3
	Tizanidine	<1%	1
Opioids	Morphine	3%	25
	Dextromethorphan / Levomethorphan	3%	21
	Noroxycodone	3%	19
	Codeine	2%	17
	Codeine 6-beta-D-Glucuronide	2%	17
	Oxycodone	2%	16
	EDDP (Methadone Metabolite)	2%	15
	Morphine 3-beta-Glucuronide	2%	15
	Morphine 6-beta-Glucuronide	2%	15
	Methadone	2%	14
	Dextrophan / Levorphanol	1%	9
	6-Monoacetylmorphine (6-MAM)	1%	8
	Mitragynine	1%	8
	Buprenorphine	1%	6
	EMDP (Methadone Metabolite)	1%	6
	Norcodeine	1%	6
	Norhydrocodone	1%	6
	Noroxymorphone	1%	6
	Oxymorphone	1%	6
	Norbuprenorphine	1%	5
	Naloxone	1%	4
	Normorphine	1%	4



Driving Under the Influence of Drugs and/or Alcohol (DUID)

2025

722 Submitted Cases

Drug Prevalence		Cases	
	Hydrocodone	<1%	3
	Loperamide	<1%	3
	Mitragynine Pseudoindoxyl	<1%	3
	O-Desmethyl-Tramadol	<1%	3
	Tramadol	<1%	3
	Tropinone	<1%	3
	Hydromorphone	<1%	2
	N-Desmethyl Tramadol	<1%	2
	7-Hydroxy Mitragynine	<1%	1
	Dihydrocodeine	<1%	1
Opium Poppy Production Compounds			
	Papaverine	2%	13
Phosphodiesterase Inhibitors			
	Tadalafil	2%	18
	Desethyl Vardenafil / N-Desmethyl Sildenafil	2%	17
	Sildenafil	2%	17
Sleep Aids			
	Melatonin	1%	8
Stimulants			
	Doxapram	<1%	1
	Modafinil	<1%	1
Tobacco, Foods and Drinks, and Endogenous			
	Cotinine	44%	317
	5-Hydroxy Tryptamine (5-HT)	34%	242
	Nicotine	31%	222
	Theacrine	7%	53
	Theobromine / Theophylline	5%	39
	Caffeine	4%	29
	Quinine / Quinidine	2%	18
	Metformin	2%	15
Z Drugs			
	Zolpidem Phenyl-4-Carboxylic Acid	1%	4
	Zolpidem	<1%	3