



Cryptosporidiosis Surveillance Project Annual Report of 2025

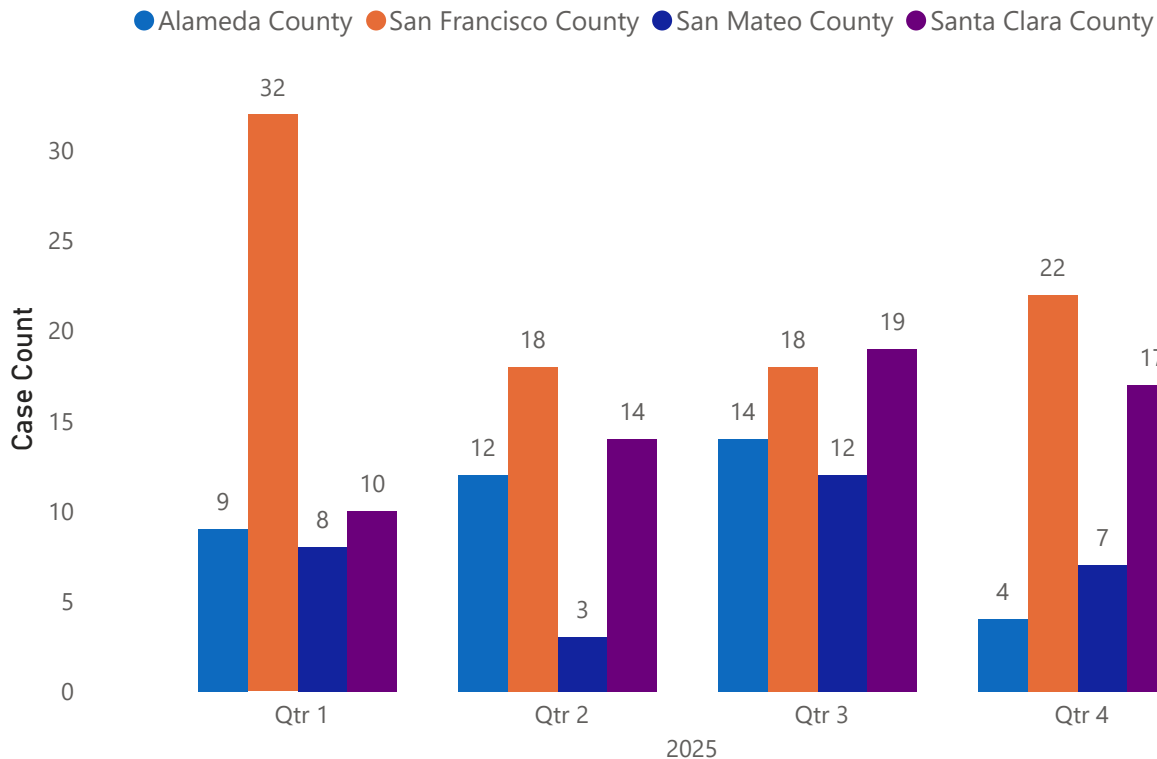


The Bay Area Cryptosporidiosis Surveillance Project (CSP) monitors human cryptosporidiosis infections in counties served by the San Francisco Public Utilities Commission: Alameda, San Francisco, San Mateo, Santa Clara, and Tuolumne, where the Hetch Hetchy Reservoir is located.

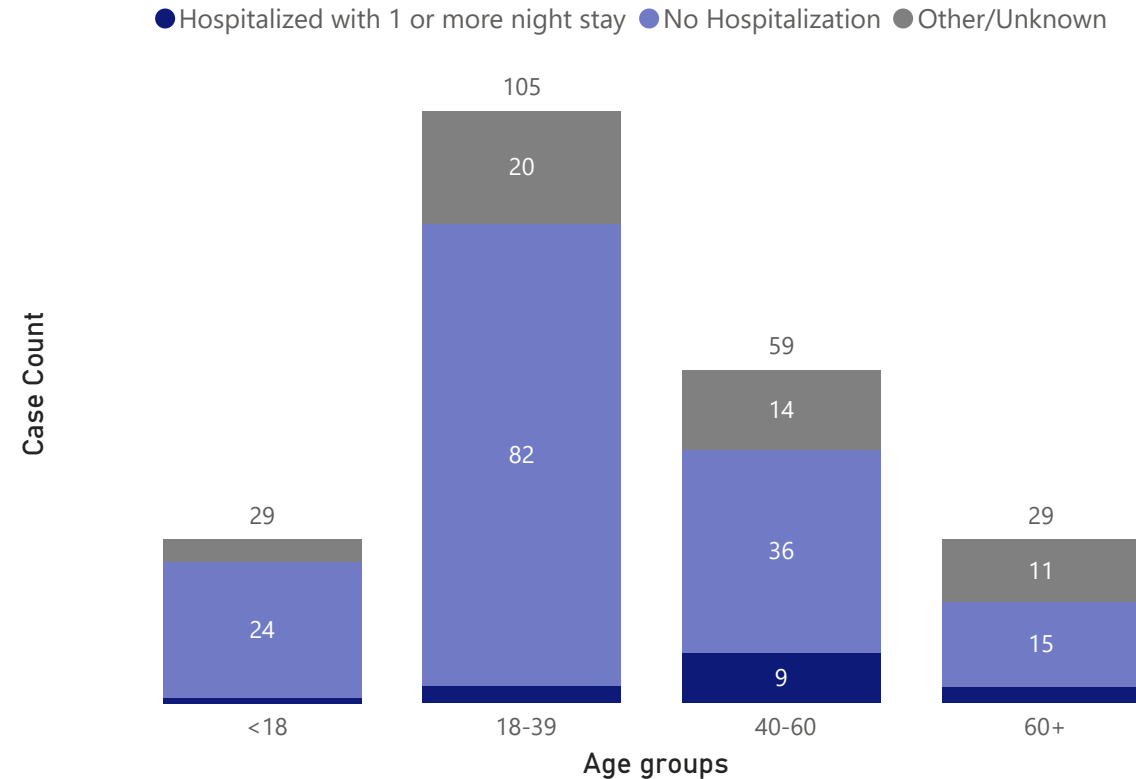
In 2025, 221 cases were reported. No system-wide, drinking water-related cryptosporidiosis outbreaks were detected, nor were any other common exposures identified. Among the five counties, San Francisco county reported the highest number of cases and had the highest incidence rate per 100,000 population.

County	Case count	Incidence Rate*
San Francisco County	90	10.69
Santa Clara County	60	3.12
Alameda County	39	2.35
San Mateo County	30	4.01
Tuolumne County	2	3.68
Total	221	4.23

Cryptosporidiosis by Quarter and County†

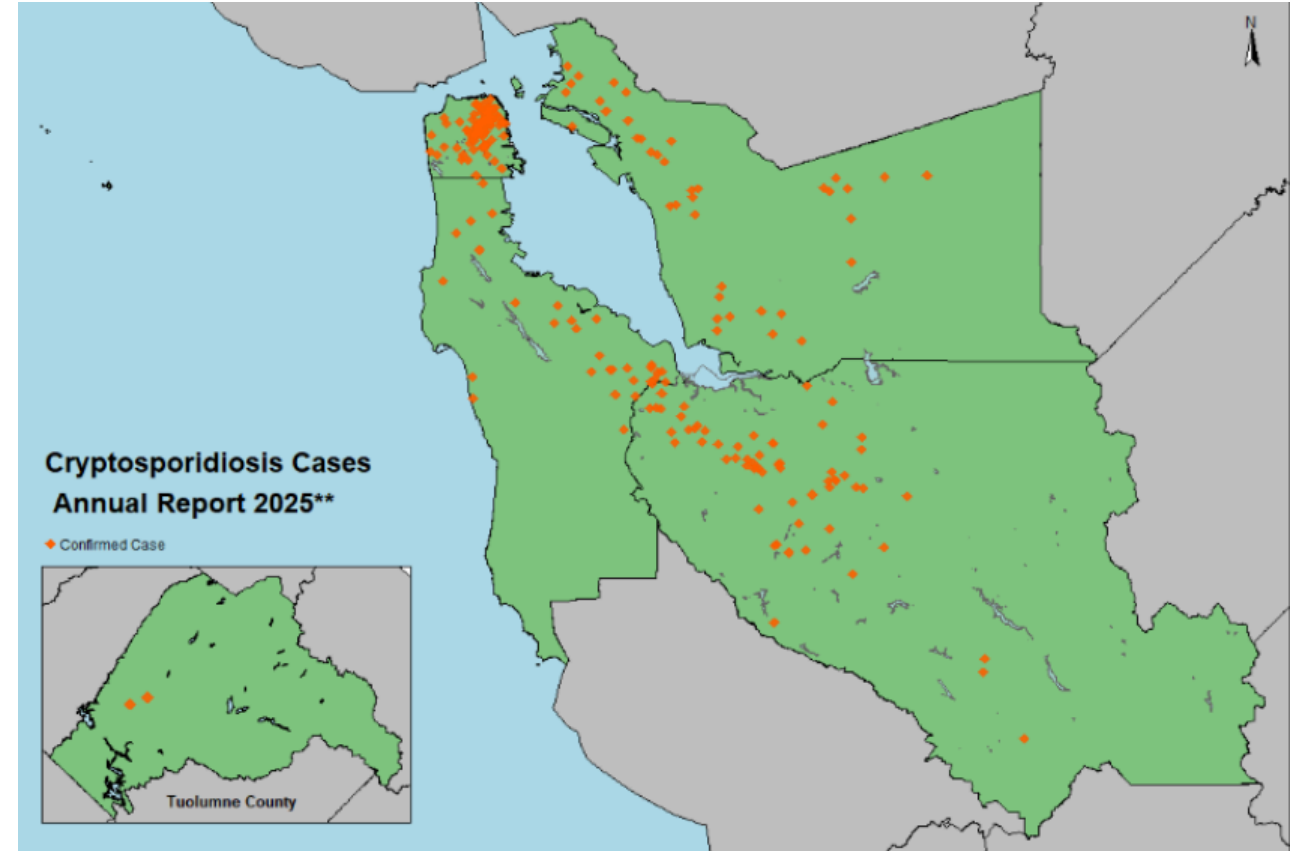
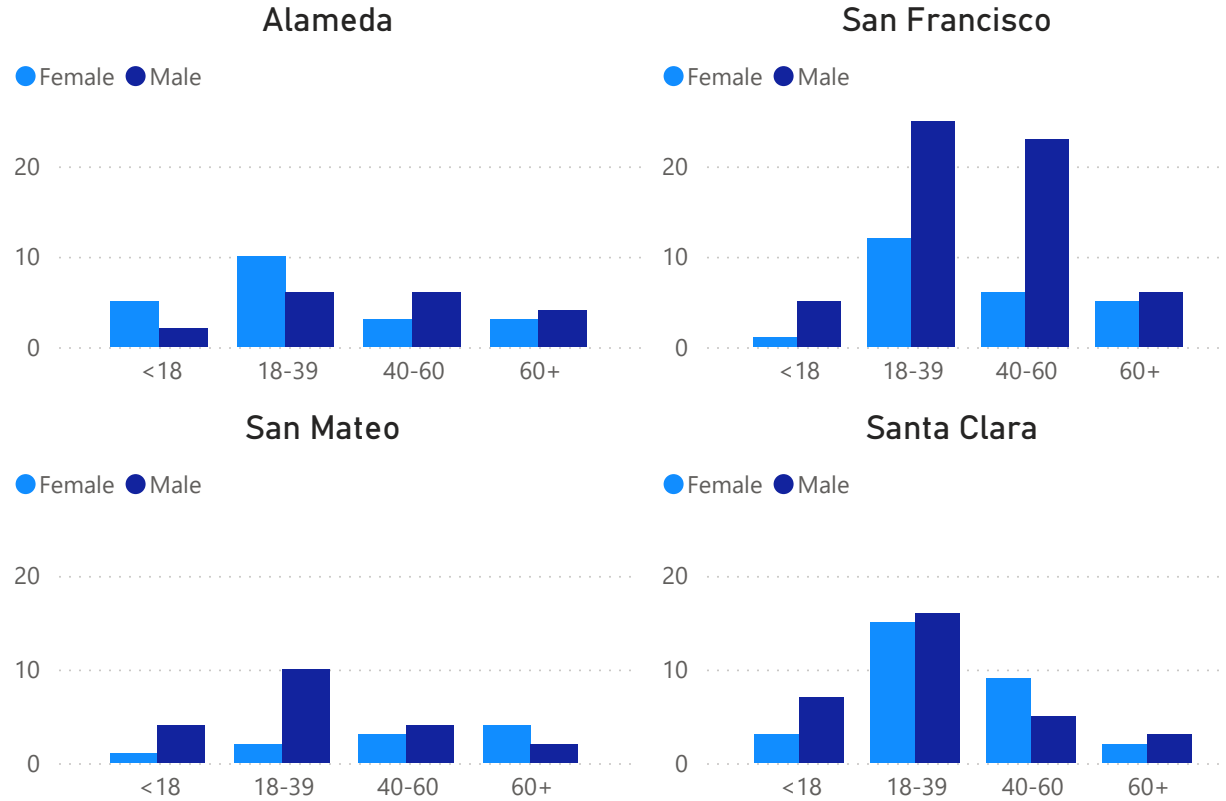


Severity by Age Group††



Cryptosporidiosis Surveillance Project Annual Report of 2025

Cryptosporidiosis by age group, sex, and county†



†Data for Tuolumne county and certain sex categories have been suppressed due to small case count.

††Only hospitalized cases with more than one night stay were shown. Cases that were possibly hospitalized, still hospitalized upon interview, and lost to follow-up cases were included in 'Other/Unknown' category.

*Incidence rates were calculated using the State of California, Department of Finance, E-1 Population Estimates for Cities, Counties, and the State with Annual Percentage Change - January 1, 2024 and 2025, Sacramento, California, May 2025. Information presented in this report may underestimate the true incidence of cryptosporidiosis.

**Cases were mapped using the reported home addresses. If unavailable, cases were mapped to the geographical center (centroid) of the reported zip code; if no valid zip code, city was used. Map not to scale.

The data presented in this report include confirmed and probable cryptosporidiosis cases from five participating counties. San Francisco investigates cases on behalf of all counties except for Tuolumne, for which it uses the county's investigation data for analysis. For cryptosporidiosis case definition, please refer to: <https://ndc.services.cdc.gov/case-definitions/cryptosporidiosis-2012/>

This report was prepared by the San Francisco Department of Public Health Applied Research, Community Health Epidemiology, and Surveillance (ARCHES) Branch, in partnership with the Communicable Disease Branch. For further information, please contact Kimberly.gonzalezbar@sfdph.org. The data are subject to change due to ongoing data cleaning efforts.