



Cryptosporidiosis Surveillance Project Annual Report of 2024



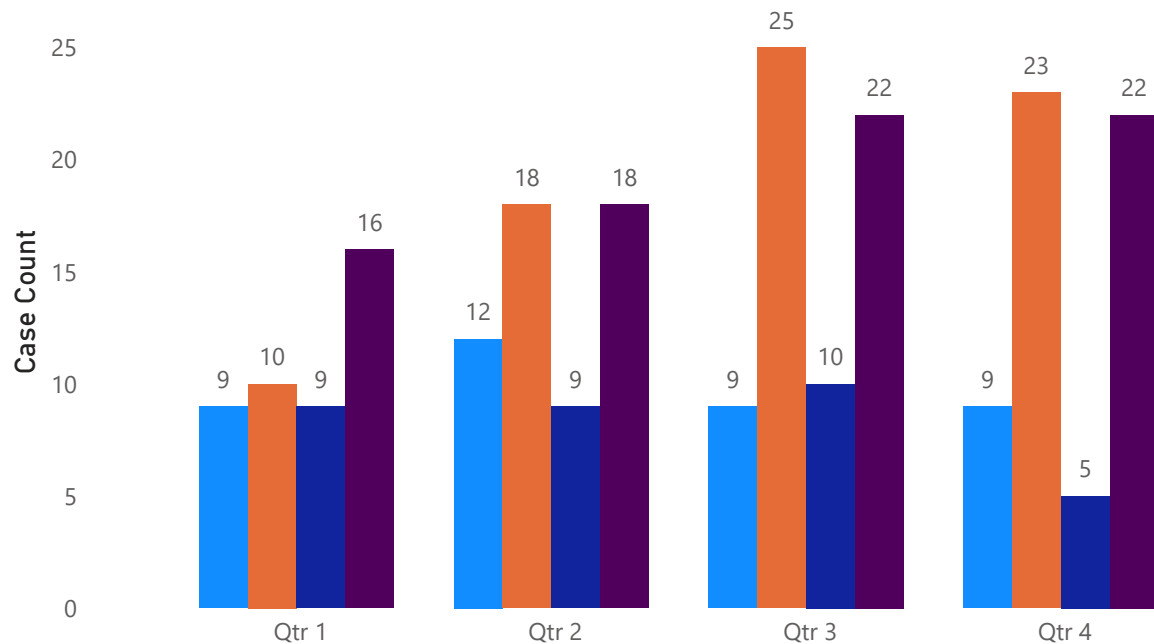
The Bay Area Cryptosporidiosis Surveillance Project (CSP) monitors human cryptosporidiosis infections in counties served by the San Francisco Public Utilities Commission: Alameda, San Francisco, San Mateo, Santa Clara, and Tuolumne, where the Hetch Hetchy Reservoir is located.

In 2024, 232 cases were reported. No system-wide, drinking water related cryptosporidiosis outbreaks were detected, nor were any other common exposures identified. Among the five counties, Santa Clara reported the highest number of cases, while Tuolumne had the highest incidence rate per 100,000 population.

County	Case Count	Incidence Rate*
Alameda	39	2.38
San Francisco	76	9.01
San Mateo	33	4.45
Santa Clara	78	4.10
Tuolumne	6	11.03
Total	232	4.48

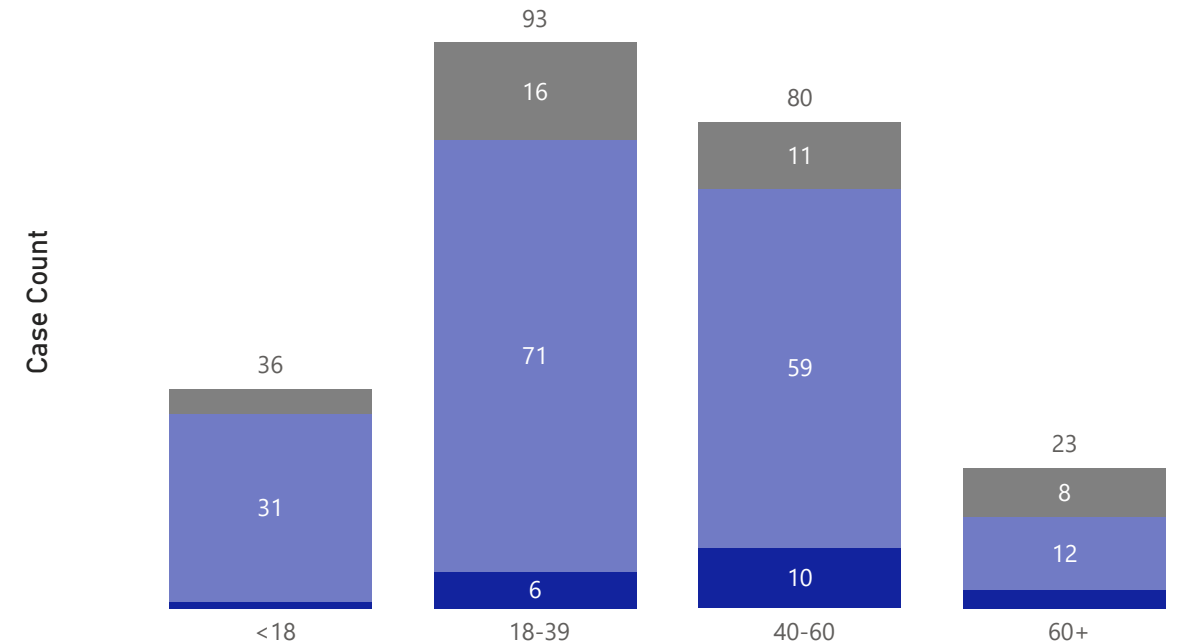
Cryptosporidiosis by Quarter and County†

● Alameda ● San Francisco ● San Mateo ● Santa Clara



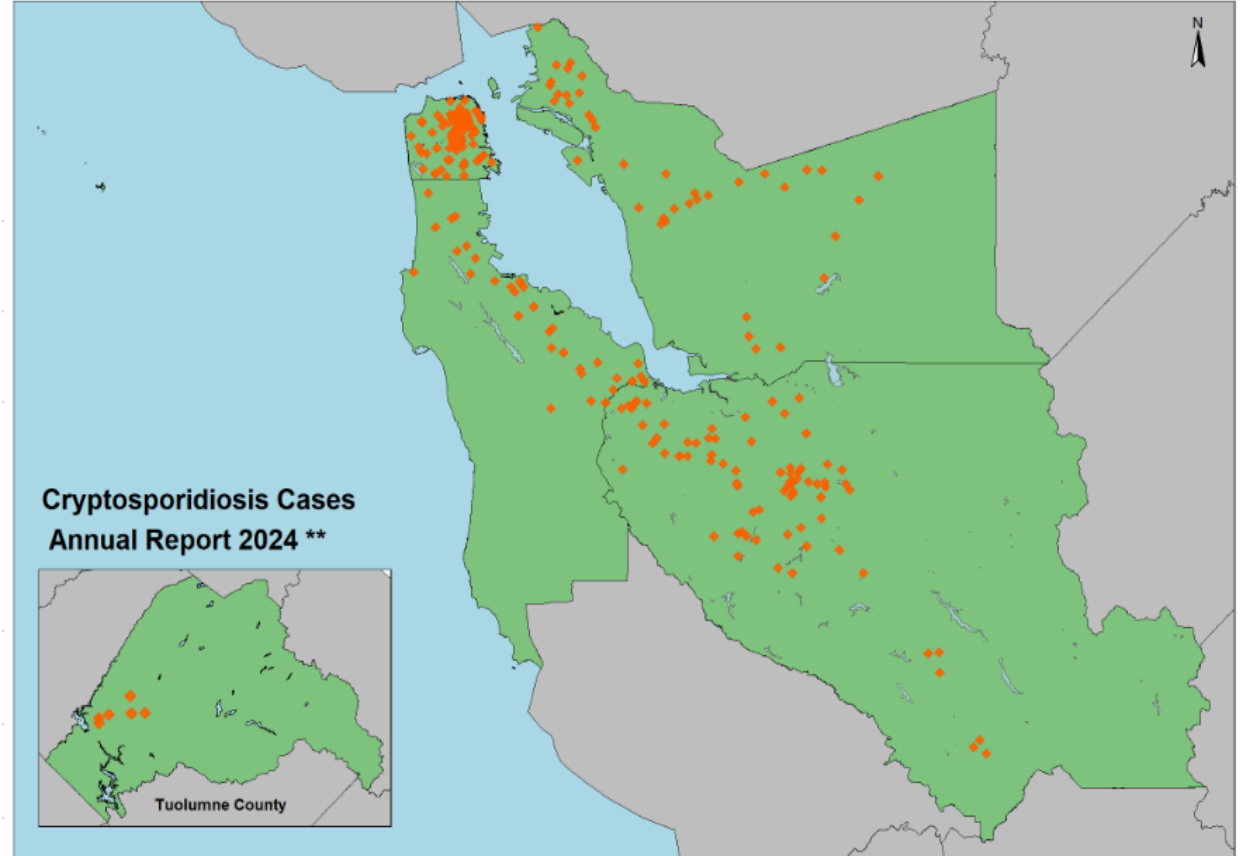
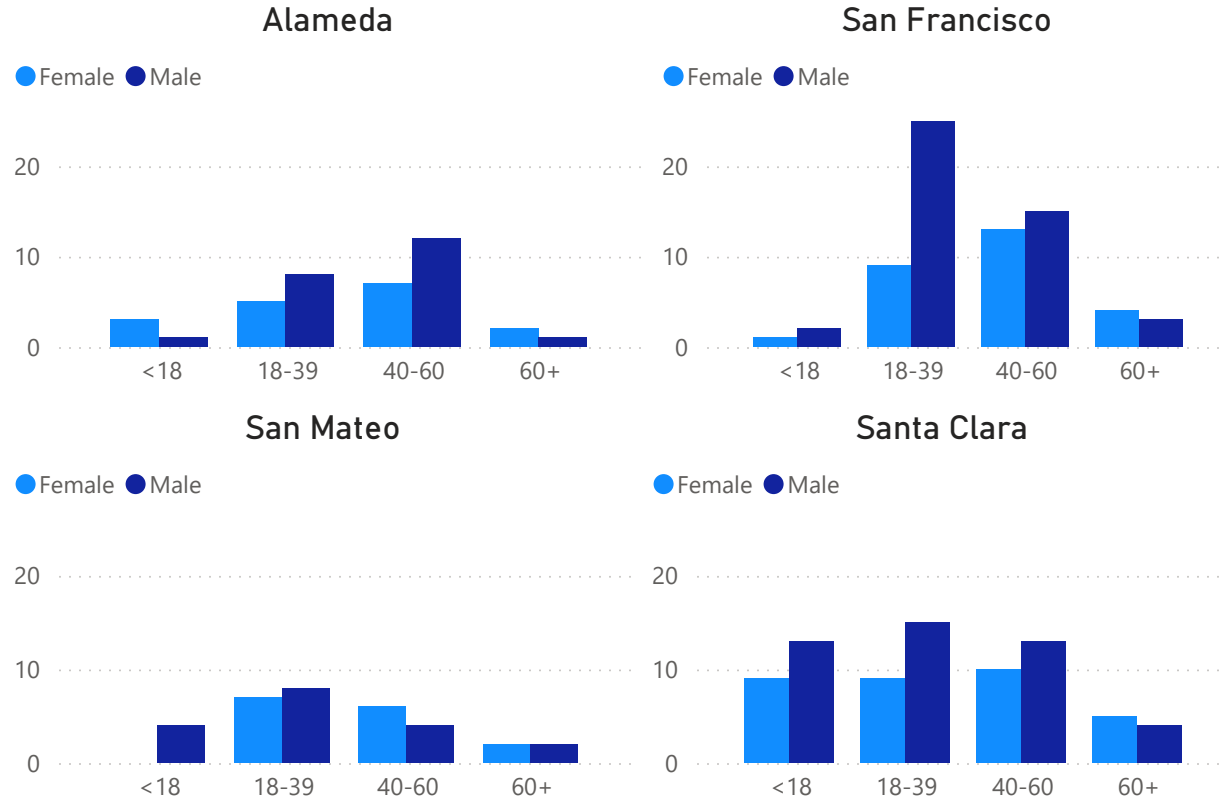
Severity by Age Group††

● Hospitalized with 1 or more night stay ● No Hospitalization ● Other/Unknown



Cryptosporidiosis Surveillance Project Annual Report of 2024

Cryptosporidiosis by age group, sex, and county†



†Data for Tuolumne county and certain sex categories have been suppressed due to small case count.

††Only hospitalized cases with more than one night stay were shown. Cases that were possibly hospitalized, still hospitalized upon interview, and lost to follow-up cases were included in 'Other/Unknown' category.

*Incidence rates were calculated using the State of California, Department of Finance, E-1 Population Estimates for Cities, Counties, and the State with Annual Percentage Change - January 1, 2023 and 2024, Sacramento, California, May 2024.

**Cases were mapped using the reported home addresses. If unavailable, cases were mapped to the geographical center (centroid) of the reported zip code; if no valid zip code, city was used. Map not to scale.

The data presented in this report include confirmed and probable cryptosporidiosis cases from five participating counties. San Francisco investigates cases on behalf of all counties except for Tuolumne, for which it uses the county's investigation data for analysis. For cryptosporidiosis case definition, please refer to: <https://ndc.services.cdc.gov/case-definitions/cryptosporidiosis-2012/>

This preliminary report was prepared by the San Francisco Department of Public Health ARCHES Branch, in partnership with Communicable Disease Section. For further information, please contact Wendy.Lu@sfdph.org. The data shown here are not finalized and are subject to change, as case closure and data cleaning efforts are ongoing.