



ELECTRICAL SERVICE INTERRUPTION TREASURE ISLAND



DATE & TIMES: Thurs. October 9th, 2025 9AM - 3PM

AFFECTED PROPERTIES: 1301 through 1310 Gateview, 901 & 905 Avenue B. Brief outage to all 1300s housing at 9A and 3P.

The date and time of the planned outage is weather-permitting and subject to change.

If you are a landlord with tenant(s) in the areas listed and the SFPUC bill is in your name, it is your responsibility to notify the tenants of the planned service interruption.

Here is how you can prepare:

Charge cell phones and other electronic devices in advance.

Keep refrigerators closed and sealed to prevent food from spoiling. <https://www.cdc.gov/food-safety/foods/keep-food-safe-after-emergency.html>

Unplug sensitive electronic equipment, such as TVs or computers.

Do not connect your property or unit to a backup generator during the outage. It is potentially hazardous to your building and to electrical workers working nearby.

For more information, visit: <https://www.sf.gov/power-outages>



INTERRUPCIÓN DEL SERVICIO ELÉCTRICO TREASURE ISLAND



FECHAS Y HORARIOS: Thurs. October 9th, 2025 9AM - 3PM

PROPIEDADES AFECTADAS: 1301 through 1310 Gateview, 901 & 905 Avenue B. Brief outage to all 1300s housing at 9A and 3P.

La fecha y el horario de la interrupción programada del servicio depende de las condiciones meteorológicas y puede sufrir cambios.

Si usted es un propietario con inquilino(s) en las áreas mencionadas y la factura de la Comisión de Servicios Públicos de San Francisco (San Francisco Public Utility Commission, SFPUC) está a su nombre, es su responsabilidad notificar a los inquilinos de la interrupción programada del servicio.

A continuación, se indica cómo puede prepararse:

Cargue los teléfonos celulares y otros dispositivos electrónicos con anticipación.

Mantenga los refrigeradores cerrados y sellados para evitar que los alimentos se echen a perder. <https://www.cdc.gov/food-safety/foods/keep-food-safe-after-emergency.html>

Desconecte los aparatos electrónicos sensibles, como televisores o computadoras.

No conecte su propiedad o unidad a un generador de respaldo durante el apagón. Es potencialmente peligroso para su edificio y para los electricistas que trabajan cerca.

Para obtener más información, visite: <https://www.sf.gov/power-outages>



電力服務中斷 TREASURE ISLAND



日期與時間： Thurs. October 9th, 2025 9AM - 3PM

受影響物業： 1301 through 1310 Gateview, 901 & 905 Avenue B. Brief outage to all 1300s housing at 9A and 3P.

規劃的服務中斷時間與日期視天氣情況而定，且可能發生變更。

如果您是在受影響區域出租房屋的房東，並且San Francisco公用事業委員會 (San Francisco Public Utilities Commission, SFPUC) 的帳單是發送到您的名下，則您需負責將此服務中斷規劃告訴您的租戶。

以下是您可以採取的準備工作：

提前為手機和其他電子設備充電。

關好冰箱，以防食物變質。 <https://www.cdc.gov/food-safety/foods/keep-food-safe-after-emergency.html>

拔掉敏感電子設備的插頭，例如電視和電腦。

在停電期間，請勿將您的物業或設備連接至備用發電機，否則會對您的建築物和附近工作的電力工人造成潛在危險。

如需更多資訊，請造訪： <https://www.sf.gov/power-outages>



ABALA SA SERBISYO SA KURYENTE TREASURE ISLAND



MGA PETA AT ORAS： Thurs. October 9th, 2025 9AM - 3PM

MGA APEKTADONG PROPERTY: 1301 through 1310 Gateview, 901 & 905 Avenue B. Brief outage to all 1300s housing at 9A and 3P.

Nakadepende sa lagay ng panahon at puwedeng magbago ang petsa at oras ng nakaplanong outage.

Kung isa kang landlord na may (mga) tenant sa mga nakalistang lugar at nakapangalan sa iyo ang bill ng Komisyon sa Mga Pampublikong Utility ng San Francisco (San Francisco Public Utilities Commission, SFPUC), responsibilidad mong abisuhan ang mga nasabing tenant tungkol sa nakaplanong abala sa serbisyo. Ganito ka puwedeng maghanda:

Advance na i-charge ang mga cell phone at iba pang electronic na device.

Panatiliing nakasara at naka-seal ang mga refrigerator para walang masirang pagkain. <https://www.cdc.gov/food-safety/foods/keep-food-safe-after-emergency.html>

Bunutin sa saksakan ang mga sensitibong electronic na equipment, gaya ng TV o computer.

Huwag isaksak ang iyong property o unit sa isang backup na generator habang may outage. Puwede itong maging mapanganib sa gusali mo at sa mga electrical worker sa malapit.

Para sa higit pang impormasyon, bumisita sa: <https://www.sf.gov/power-outages>



ELECTRICAL SERVICE INTERRUPTION TREASURE ISLAND



DATE & TIMES: Thurs. October 2nd, 2025 9AM - 3PM

AFFECTED PROPERTIES: 1301 through 1310 Gateview, 901 & 905 Avenue B. Brief outage to all 1300s housing at 9A and 3P.

The date and time of the planned outage is weather-permitting and subject to change.

If you are a landlord with tenant(s) in the areas listed and the SFPUC bill is in your name, it is your responsibility to notify the tenants of the planned service interruption.

Here is how you can prepare:

Charge cell phones and other electronic devices in advance.

Keep refrigerators closed and sealed to prevent food from spoiling. <https://www.cdc.gov/food-safety/foods/keep-food-safe-after-emergency.html>

Unplug sensitive electronic equipment, such as TVs or computers.

Do not connect your property or unit to a backup generator during the outage. It is potentially hazardous to your building and to electrical workers working nearby.

For more information, visit: <https://www.sf.gov/power-outages>



INTERRUPCIÓN DEL SERVICIO ELÉCTRICO TREASURE ISLAND



FECHAS Y HORARIOS: Thurs. October 2nd, 2025 9AM - 3PM

PROPIEDADES AFECTADAS: 1301 through 1310 Gateview, 901 & 905 Avenue B. Brief outage to all 1300s housing at 9A and 3P.

La fecha y el horario de la interrupción programada del servicio depende de las condiciones meteorológicas y puede sufrir cambios.

Si usted es un propietario con inquilino(s) en las áreas mencionadas y la factura de la Comisión de Servicios Públicos de San Francisco (San Francisco Public Utility Commission, SFPUC) está a su nombre, es su responsabilidad notificar a los inquilinos de la interrupción programada del servicio.

A continuación, se indica cómo puede prepararse:

Cargue los teléfonos celulares y otros dispositivos electrónicos con anticipación.

Mantenga los refrigeradores cerrados y sellados para evitar que los alimentos se echen a perder. <https://www.cdc.gov/food-safety/foods/keep-food-safe-after-emergency.html>

Desconecte los aparatos electrónicos sensibles, como televisores o computadoras.

No conecte su propiedad o unidad a un generador de respaldo durante el apagón. Es potencialmente peligroso para su edificio y para los electricistas que trabajan cerca.

Para obtener más información, visite: <https://www.sf.gov/power-outages>



電力服務中斷 TREASURE ISLAND



日期與時間： Thurs. October 2nd, 2025 9AM - 3PM

受影響物業： 1301 through 1310 Gateview, 901 & 905 Avenue B. Brief outage to all 1300s housing at 9A and 3P.

規劃的服務中斷時間與日期視天氣情況而定，且可能發生變更。

如果您是在受影響區域出租房屋的房東，並且San Francisco公用事業委員會 (San Francisco Public Utilities Commission, SFPUC) 的帳單是發送到您的名下，則您需負責將此服務中斷規劃告訴您的租戶。

以下是您可以採取的準備工作：

提前為手機和其他電子設備充電。

關好冰箱，以防食物變質。 <https://www.cdc.gov/food-safety/foods/keep-food-safe-after-emergency.html>

拔掉敏感電子設備的插頭，例如電視和電腦。

在停電期間，請勿將您的物業或設備連接至備用發電機，否則會對您的建築物和附近工作的電力工人造成潛在危險。

如需更多資訊，請造訪： <https://www.sf.gov/power-outages>



ABALA SA SERBISYO SA KURYENTE TREASURE ISLAND



MGA PETA AT ORAS： Thurs. October 2nd, 2025 9AM - 3PM

MGA APEKTADONG PROPERTY: 1301 through 1310 Gateview, 901 & 905 Avenue B. Brief outage to all 1300s housing at 9A and 3P.

Nakadepende sa lagay ng panahon at puwedeng magbago ang petsa at oras ng nakaplanong outage.

Kung isa kang landlord na may (mga) tenant sa mga nakalistang lugar at nakapangalan sa iyo ang bill ng Komisyon sa Mga Pampublikong Utility ng San Francisco (San Francisco Public Utilities Commission, SFPUC), responsibilidad mong abisuhan ang mga nasabing tenant tungkol sa nakaplanong abala sa serbisyo. Ganito ka puwedeng maghanda:

Advance na i-charge ang mga cell phone at iba pang electronic na device.

Panatiliing nakasara at naka-seal ang mga refrigerator para walang masirang pagkain. <https://www.cdc.gov/food-safety/foods/keep-food-safe-after-emergency.html>

Bunutin sa saksakan ang mga sensitibong electronic na equipment, gaya ng TV o computer.

Huwag isaksak ang iyong property o unit sa isang backup na generator habang may outage. Puwede itong maging mapanganib sa gusali mo at sa mga electrical worker sa malapit.

Para sa higit pang impormasyon, bumisita sa: <https://www.sf.gov/power-outages>



ELECTRICAL SERVICE INTERRUPTION TREASURE ISLAND



DATE & TIMES: Thurs. September 25th, 2025 9AM - 3PM

AFFECTED PROPERTIES: 1301 through 1310 Gateview, 901 & 905 Avenue B. Brief outage to all 1300s housing at 9A and 3P.

The date and time of the planned outage is weather-permitting and subject to change.

If you are a landlord with tenant(s) in the areas listed and the SFPUC bill is in your name, it is your responsibility to notify the tenants of the planned service interruption.

Here is how you can prepare:

Charge cell phones and other electronic devices in advance.

Keep refrigerators closed and sealed to prevent food from spoiling. <https://www.cdc.gov/food-safety/foods/keep-food-safe-after-emergency.html>

Unplug sensitive electronic equipment, such as TVs or computers.

Do not connect your property or unit to a backup generator during the outage. It is potentially hazardous to your building and to electrical workers working nearby.

For more information, visit: <https://www.sf.gov/power-outages>



INTERRUPCIÓN DEL SERVICIO ELÉCTRICO TREASURE ISLAND



FECHAS Y HORARIOS: Thurs. September 25th, 2025 9AM - 3PM

PROPIEDADES AFECTADAS: 1301 through 1310 Gateview, 901 & 905 Avenue B. Brief outage to all 1300s housing at 9A and 3P.

La fecha y el horario de la interrupción programada del servicio depende de las condiciones meteorológicas y puede sufrir cambios.

Si usted es un propietario con inquilino(s) en las áreas mencionadas y la factura de la Comisión de Servicios Públicos de San Francisco (San Francisco Public Utility Commission, SFPUC) está a su nombre, es su responsabilidad notificar a los inquilinos de la interrupción programada del servicio.

A continuación, se indica cómo puede prepararse:

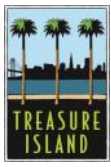
Cargue los teléfonos celulares y otros dispositivos electrónicos con anticipación.

Mantenga los refrigeradores cerrados y sellados para evitar que los alimentos se echen a perder. <https://www.cdc.gov/food-safety/foods/keep-food-safe-after-emergency.html>

Desconecte los aparatos electrónicos sensibles, como televisores o computadoras.

No conecte su propiedad o unidad a un generador de respaldo durante el apagón. Es potencialmente peligroso para su edificio y para los electricistas que trabajan cerca.

Para obtener más información, visite: <https://www.sf.gov/power-outages>



電力服務中斷 TREASURE ISLAND



日期與時間： Thurs. September 25th, 2025 9AM - 3PM

受影響物業： 1301 through 1310 Gateview, 901 & 905 Avenue B. Brief outage to all 1300s housing at 9A and 3P.

規劃的服務中斷時間與日期視天氣情況而定，且可能發生變更。

如果您是在受影響區域出租房屋的房東，並且San Francisco公用事業委員會 (San Francisco Public Utilities Commission, SFPUC) 的帳單是發送到您的名下，則您需負責將此服務中斷規劃告訴您的租戶。

以下是您可以採取的準備工作：

提前為手機和其他電子設備充電。

關好冰箱，以防食物變質。 <https://www.cdc.gov/food-safety/foods/keep-food-safe-after-emergency.html>

拔掉敏感電子設備的插頭，例如電視和電腦。

在停電期間，請勿將您的物業或設備連接至備用發電機，否則會對您的建築物和附近工作的電力工人造成潛在危險。

如需更多資訊，請造訪： <https://www.sf.gov/power-outages>



ABALA SA SERBISYO SA KURYENTE TREASURE ISLAND



MGA PETA AT ORAS： Thurs. September 25th, 2025 9AM - 3PM

MGA APEKTADONG PROPERTY: 1301 through 1310 Gateview, 901 & 905 Avenue B. Brief outage to all 1300s housing at 9A and 3P.

Nakadepende sa lagay ng panahon at puwedeng magbago ang petsa at oras ng nakaplanong outage.

Kung isa kang landlord na may (mga) tenant sa mga nakalistang lugar at nakapangalan sa iyo ang bill ng Komisyon sa Mga Pampublikong Utility ng San Francisco (San Francisco Public Utilities Commission, SFPUC), responsibilidad mong abisuhan ang mga nasabing tenant tungkol sa nakaplanong abala sa serbisyo. Ganito ka puwedeng maghanda:

Advance na i-charge ang mga cell phone at iba pang electronic na device.

Panatiliing nakasara at naka-seal ang mga refrigerator para walang masirang pagkain. <https://www.cdc.gov/food-safety/foods/keep-food-safe-after-emergency.html>

Bunutin sa saksakan ang mga sensitibong electronic na equipment, gaya ng TV o computer.

Huwag isaksak ang iyong property o unit sa isang backup na generator habang may outage. Puwede itong maging mapanganib sa gusali mo at sa mga electrical worker sa malapit.

Para sa higit pang impormasyon, bumisita sa: <https://www.sf.gov/power-outages>

From: [Press Office, Mayor \(MYR\)](#)
To: [Press Office, Mayor \(MYR\)](#)
Subject: MAYOR LURIE CUTS RIBBON AT SAN FRANCISCO'S NEWEST PARK, CELEBRATES ACTIVATION OF ANOTHER PUBLIC SPACE
Date: Saturday, September 13, 2025 12:26:02 PM
Attachments: [image001.png](#)

Image



FOR IMMEDIATE RELEASE

September 13, 2025

Contact: Charles Kretchmer Lutvak, 415-575-5617, mayorspressoffice@sfgov.org

MAYOR LURIE CUTS RIBBON AT SAN FRANCISCO'S NEWEST PARK, CELEBRATES ACTIVATION OF ANOTHER PUBLIC SPACE

New Park on Treasure Island Adds Community Space for Residents, Visitors

*Continues Mayor Lurie's Work to Foster Vibrant Public Spaces, Support San Francisco's
Recovery*

SAN FRANCISCO – Mayor Daniel Lurie today cut the ribbon on the new Cityside Park on Treasure Island, with a great lawn for events and recreation, a pedestrian plaza designed to host food trucks, markets, and other events, and a BBQ plaza with picnic spots and grilling stations. The park will be the first stop for visitors arriving to the island by ferry, offering sweeping views of the San Francisco skyline and Bay Area bridges.

The newest park in San Francisco continues Mayor Lurie's work to improve public spaces and drive the city's recovery. Last month, Mayor Lurie [broke ground on the final phase of the India Basin Waterfront Park project](#), which will add a new park on the city's southeastern waterfront. Earlier in his administration, he [signed legislation establishing five new entertainment zones across the city and launched another in the Castro](#), activating public spaces and revitalizing neighborhoods. This year, San Francisco's tourism industry is seeing real momentum, with visitor volume and [spending in San Francisco growing](#) since last year, and [hotel rooms and](#)

[convention center bookings nearly 65% higher than in 2024.](#)

“Cityside Park and the community rising around it show us what is possible when San Francisco builds for the future. We know that open space and housing can grow together, and our city is at its strongest when we come together to create places like this,” said **Mayor Lurie**. “This park will be a front yard for the families and residents who call this island home and will welcome visitors from across the country to see some of the best views of the greatest city in the world.”

At the park opening, [Treasure Island Community Development](#) (TICD) and local food truck sensation Off the Grid launched “Off the Grid Treasure Island,” a new weekly market series running every Saturday through November 1. The series features more than 15 food trucks and pop-up restaurants, family-friendly activities, including lawn games, face painting, activity kits, and special experiential performances, and live music performances.

Cityside Park will be a key feature of a new neighborhood under development on Treasure Island. Plans for the new development underway include 8,000 new homes for 18,000 residents, 300 acres of parks, trails, and open space, new restaurants and shops, and public art installations. Once complete, the 300 acres of new public parks, trails, and open space will represent the largest expansion of open space in San Francisco since the creation of Golden Gate Park. Nearly 1,000 homes are now open or under construction on Treasure Island and neighboring Yerba Buena Island with more than 1,200 market-rate and affordable units set to be completed by the end of 2025.

“The opening of Cityside Park marks an important new chapter for Treasure Island,” said **District 6 Supervisor Matt Dorsey**. “As thousands of new residents move into their homes, this park will be a central gathering place that connects people to each other and to the iconic views of San Francisco, and it firmly establishes Treasure Island as part of District 6’s growing reputation for world-class parks and open spaces.”

TICD built the nearly six-acre phase one section of Cityside Park at a cost of \$12 million. The first phase also includes nearly an acre of stormwater treatment gardens integrated through a series of basins and channels with plantings found in bay area freshwater wetlands. Subsequent phases will add another 16 acres to Cityside Park, stretching the length of the island's western shoreline.

“As we prepare for thousands of new residents to make their home on the island, we are building not just new housing, but parks, trails, and open space where families and neighbors can gather, play, and take in the unparalleled beauty of the bay together,” said **City**

Administrator Carmen Chu. “Parks like this bring our communities together. I am grateful to my team at the Treasure Island Development Authority and our partners at Treasure Island Community Development for making this vision a reality.”

“A key consideration in planning for the future of Treasure Island has been to open up the island to all residents of the Bay Area through a network of world-class parks and open spaces,” said **Treasure Island Development Authority Director Robert Beck.** “Today’s opening is the first installment in the construction of a Cityside Park which will ultimately run the full length of the western shoreline with unparalleled views of the bridges, islands, and skylines that make the Bay Area so unique. We are excited to celebrate this milestone as a glimpse into the promise and potential of the island.”

“Cityside Park will be one of the world’s most photographed park settings where residents and visitors will be able to picnic, play, and take in a concert, art fair, or movie screening,” said **Chris Meany, Co-CEO of TICD and Managing Partner at Wilson Meany.** “For residents of Treasure Island, this is their front yard, and for visitors, it offers unforgettable vistas of marquee attractions circling the Bay Area.”

Built by TICD, Cityside Park is a public park that will initially be managed and maintained by Treasure Island Development Authority (TIDA)—a city agency that oversees Treasure Island and Yerba Buena Island—until it formally joins the San Francisco Recreation and Parks system.

The park was designed by San Francisco-based CMG Landscape Architecture.

“Cityside Park provides a unique combination of amenities and environmentally sustainable features along the immediate shoreline and as part of the interior design,” said **CMG Principal Kevin Conger.**

The Bay Area women’s professional soccer team, Bay FC, will soon break ground on a training facility on Treasure Island that will open in 2027. Additionally, new roads, bike lanes, utilities, sea level rise protections, and geotechnical improvements are completed or underway, and a new ferry terminal provides daily service to and from downtown San Francisco. All of this, along with existing restaurants, the marina, sports venues, and more, are bringing new energy to the city’s newest neighborhood.

Sustainable design is a central feature of the entire project, with innovative infrastructure integrated throughout both Treasure Island and Yerba Buena Island. Yerba Buena Island is now home to the Bay Area’s largest stormwater treatment gardens, which help filter rainwater

before it reaches the bay while also supporting native wildlife habitats. These include a 12-acre garden and a 25-acre garden, both completed in late 2022.

Yerba Buena Island also features unique open spaces like The Rocks Dog Park and two scenic overlooks—Signal Point and Infinity—which offer sweeping views of the Bay Area. Infinity Park is also home to “Point of Infinity,” a 69-foot sculpture by artist Hiroshi Sugimoto.

###

NEWS RELEASE (/NEWS-CATEGORIES/NEWS-RELEASE-0)

New Permanent Sculpture on Treasure Island by Artist Ned Kahn Captures the Movement of Fog and Wind at Cityside Park

Canopy of Sky, a 28-foot-wide kinetic sculpture, is the latest permanent work of art to be unveiled as part of the Treasure Island Art Program





Image: View of San Francisco City Skyline and Canopy of Sky by Ned Kahn at Cityside Park on Treasure Island. Photo by Ethan Kaplan Photography.

SAN FRANCISCO, September 13, 2025 – The **San Francisco Arts Commission** is pleased to announce the unveiling of ***Canopy of Sky***, a new permanent public artwork by internationally renowned environmental artist **Ned Kahn**, following the opening of Treasure Island's new **Cityside Park**.

The 28-foot 9¾-inch-wide sculpture is composed of approximately 7,000 translucent polycarbonate discs that shimmer and rustle in the wind, transforming the island's signature fog, wind, and ocean air into a kinetic sensory experience.

Fabricated from stainless steel, aluminum, and polycarbonate, the commission reflects Kahn's mastery of durable, weather-resistant materials designed to endure the island's maritime conditions while responding dynamically to the surrounding environment.

Suspended 15 feet above ground on a stainless-steel ring supported by three curved aluminum poles, Canopy of Sky draws inspiration from the ever-shifting coastal weather that defines Treasure Island's environment. Echoing the movement of leaves and the subtle sounds of the natural world, the artwork makes tangible the invisible forces of the atmosphere.

"Public art is about creating an experience that engage the senses, spark curiosity, and connects people to the environment where that artwork is sited," said **Ralph Remington**, Director of Cultural Affairs. "Ned Kahn's Canopy of Sky embodies all of these qualities. It transforms wind and fog, elements so intrinsic to San Francisco, into a mesmerizing experience that will inspire visitors for generations to come. We are thrilled to see this sculpture join other monumental works of public art on the island."

The installation marks the second permanent commission of the **Treasure Island Art Program**, following the June 2023 completion of **Hiroshi Sugimoto's Point of Infinity** (<https://sfartscommission.org/our-role-impact/press-room/press-release/new-monumental-sculpture-internationally-renowned-artist-0>) on Yerba Buena Island.

"We are implementing a vision that incorporates art into Treasure Island's 300 acres of new

public parks and open space, continuing the artistic legacy that is so much a part of its history. Cityside Park, with its spectacular views of San Francisco's skyline and Golden Gate Bridge, provides the perfect setting for Ned Kahn's 'Canopy of Sky' – a dynamic sculpture that uses wind to create magical motion and capture light," said **Fei Tsen**, President of the Treasure Island Development Authority Board of Directors. "This artwork celebrates the natural forces that define Treasure Island, allowing visitors to experience the beauty of our wind and fog in an entirely new way. Our intention is to create experiences that marry art with nature as part of our overall vision of creating public art throughout Treasure Island."

Rooted in the **Treasure Island Art Master Plan** (<https://www.sfartscommission.org/content/treasure-island-arts-program>), the public art program calls for imaginative, forward-thinking contemporary artworks that shape the island's evolving identity.

"The confluence of science and art has fascinated me throughout my career," said artist **Ned Kahn**. "For the last twenty years, I have developed a body of work inspired by atmospheric physics, geology, astronomy and fluid motion. I strive to create artworks that enable viewers to observe and interact with natural processes. I am less interested in creating an alternative reality than I am in capturing, through my art, the mysteriousness of the world around us."

Cityside Park, located on the island's western waterfront, offers panoramic views of downtown San Francisco, the Bay Bridge, and the Golden Gate Bridge. Designed as a 24-acre series of outdoor "rooms" shaped by native landscaping and open spaces, the park provides a dynamic setting for community gatherings, recreation, and cultural programming. The Canopy of Sky site, a gently sloped lawn near the waterfront promenade, was chosen to maximize visibility and encourage interaction with the artwork.

The Treasure Island Art Program is implemented in partnership with the Treasure Island Development Authority (TIDA), the Treasure Island Community Development, and the Treasure Island Arts Steering Committee.

Over the next two decades, the program will introduce a range of permanent and temporary public artworks across the island, reinforcing Treasure Island's role as a vibrant nexus of arts, culture, and community life.

The artwork project budget for Canopy of Sky was approximately \$450,000, which was inclusive of artist fees, design, fabrication, transportation, and installation. The total estimated weight of the sculpture is approximately 1,340 pounds. Funding was generated by the 1%-for-Art in Private Development requirement.



Image: View of Bay Bridge and Canopy of Sky by Ned Kahn at Cityside Park on Treasure Island.
Photo by Ethan Kaplan Photography.

###

About the Artist

Ned Kahn is an environmental artist and sculptor whose work mimics the usually invisible forces of nature and makes it visible to audiences. His main interests include fluid dynamics, optics, acoustics, and other physical phenomena. Kahn worked as an apprentice to Frank Oppenheimer, the founder of the Exploratorium, during the 1980s and designed many timeless exhibits for the institution. He has gone on to design exhibits for museums such as the Museum of Natural History in New York, Museum of Natural History in London, England, the Pasadena Museum of California Art, and others. He has also completed numerous public commissions including works for the Skirball Museum and Cultural Center in Los Angeles, CA and Yahoo Headquarters in Sunnyvale, CA. Kahn is a recipient of the MacArthur Foundation's genius grant.

About the San Francisco Arts Commission

The San Francisco Arts Commission (SFAC) is the City agency that champions the arts as essential to daily life by investing in a vibrant arts community, enlivening the urban

environment, and shaping innovative cultural policy. SFAC programs include the Civic Art Collection, Civic Design Review, Community Investments, Public Art, SFAC Galleries, and Art Vendor Licensing. Learn more at sfartscommission.org.

About Treasure Island Development Authority

The Treasure Island Development Authority (TIDA) is the public entity that is overseeing the implementation of the Master Plan for the redevelopment of Treasure Island and Yerba Buena Island. As a part of the master plan, Treasure Island and neighboring Yerba Buena Island are being transformed into a new, environmentally sustainable, 21st-century San Francisco neighborhood featuring 8,000 new homes – including approximately 2,200 permanently affordable homes – and new restaurants and shops. Located in the middle of San Francisco Bay and featuring 300 acres of parks, trails and open space, public art installations, and exciting events, this visionary redevelopment will be a regional recreational destination as well as a reimagined neighborhood. More information is available at sf.gov/TIDA.

About Treasure Island Community Development

Treasure Island Community Development (TICD) is the master developer for Treasure Island — a partnership of Wilson Meany, Stockbridge Capital Group, and Lennar Corp. Learn more about Treasure Island at TISF.com and Yerba Buena Island at YerbaBuenalIslandSF.com.

OTHER ONLINE RESOURCES

View Canopy of Sky on Flickr (<https://www.flickr.com/photos/sfac/albums/72177720328966022>)

MEDIA CONTACT

Coma Te

Director of Communications

(415) 252-2229

coma.te@sfgov.org (<mailto:coma.te@sfgov.org>)



RECENT PRESS RELEASES

OCT 1 2025

New Permanent Artwork by Artist Norie Sato Unveiled at SFPUC Southeast Treatment Plant in Bayview (</our-role-impact/press-room/press-release/new-permanent-artwork-artist-norie-sato-unveiled-sfpuc>)

SEP 16 2025

San Francisco Arts Commission Announces Launch of 2026-2027 Grant Opportunities (</our-role-impact/press-room/press-release/san-francisco-arts-commission-announces-launch-2026%E2%80%932027>)

SEP 13 2025

New Permanent Sculpture on Treasure Island by Artist Ned Kahn Captures the Movement of Fog and Wind at Cityside Park (</our-role-impact/press-room/press-release/new-permanent-sculpture-treasure-island-artist-ned-kahn>)

SEP 9 2025

San Francisco Commemorates 150th Anniversary of Lotta's Fountain, First Public Monument in the City's Civic Art Collection (</our-role-impact/press-room/press-release/san-francisco-commemorates-150th-anniversary-lotta%E2%80%99s>)

SEP 8 2025

2025 Art on Market Street Poster Series Highlights San Francisco's Creative Spirit Through "Things" (</our-role-impact/press-room/press-release/2025-art-market-street-poster-series-highlights-san>)

[Visit the Press Room \(/our-role-impact/press-room\)](/our-role-impact/press-room)

Sign up for our newsletter to receive notifications about events, gallery openings, artist talks, grant deadlines, and calls for artists.

SIGN UP NOW ([HTTPS://LP.CONSTANTCONTACTPAGES.COM/SU/9PICN96](https://lp.constantcontactpages.com/su/9PICN96))



401 Van Ness Avenue, Suite 325

San Francisco, CA 94102

(415) 252-2266

ART-Info@sfgov.org (<mailto:ART-Info@sfgov.org>)

(<https://www.facebook.com/sfartscommission>)

(<https://twitter.com/SFAC>)

(<https://www.youtube.com/user/ArtsCommission>)

(https://www.instagram.com/sf_arts_commission/)

WHAT'S ON THE CALENDAR (/CALENDAR) ▾

[UPCOMING EXHIBITIONS \(/CALENDAR?FIELD_EVENT_TYPE_TID\[\]=18\)](/CALENDAR?FIELD_EVENT_TYPE_TID[]=18)

[WORKSHOPS \(/CALENDAR?FIELD_EVENT_TYPE_TID%5B%5D=20\)](/CALENDAR?FIELD_EVENT_TYPE_TID%5B%5D=20)

[PUBLIC MEETINGS \(/CALENDAR?FIELD_EVENT_TYPE_TID%5B%5D=3\)](/CALENDAR?FIELD_EVENT_TYPE_TID%5B%5D=3)

[APPLICATION DEADLINES \(/CALENDAR?FIELD_EVENT_TYPE_TID%5B%5D=22\)](/CALENDAR?FIELD_EVENT_TYPE_TID%5B%5D=22)

SFAC MAIN GALLERY

War Memorial Veterans Building

401 Van Ness Avenue, Suite 126

Wednesday - Saturday, 12 - 5 PM

sfac.galleries@sfgov.org (<mailto:sfac.galleries@sfgov.org>)



CITY & COUNTY OF SAN FRANCISCO ([HTTP://SFGOV.ORG](http://sfgov.org))

| [TERMS OF USE \(/TERMS-USE\)](/terms-use) | [PRIVACY POLICY \(/PRIVACY-POLICY\)](/privacy-policy)

| [ACCESSIBILITY POLICY \(/ACCESSIBILITY-POLICY\)](/accessibility-policy)

© 2020 SAN FRANCISCO ARTS COMMISSION. ALL RIGHTS RESERVED.

September 30, 2025

Robert Beck
Treasure Island Development Authority
Director

Dear Mr. Beck,

I hope this letter finds you well. I am pleased to share that, effective September 17, I have joined Banco Nacional de México as Director of Fomento Cultural Banamex. I am confident that, thanks to the trust you placed in us, we will continue to collaborate on new exhibition and publishing projects at our cultural venues in Mexico City and throughout the country.

I would especially like to thank you for your valuable support of the exhibition *Miguel Covarrubias. A look without boundaries*, presented at the Palacio de Cultura Banamex. Palacio de Iturbide from April 23 until September 21st, 2025.

We recognize that our Institution's efforts could not have succeeded without your generous contribution. By entrusting with the loan of works from the Treasure Island Development Authority collection, you played a vital role in bringing this cultural project to fruition.

Please do not hesitate to contact us should you require any assistance and accept my warmest regards.

Sincerely,



Natalia Pollak
Director
Fomento Cultural Banamex, A.C.

CC

Peter Summerville | TIDA

Treasure Island/ YBI COMMUNITY MEETING



Please join One Treasure Island as we provide this opportunity for information sharing and communication amongst the Treasure Island community about community engagement activities/events and the island development.

Wed Sept 17 @ 6:00-7:30pm

Meetings will occur every other month on ZOOM.



No registration needed.
Just scan this QR code to
join the meeting.



<https://us02web.zoom.us/j/81056789872>

Reunión de la Comunidad de Treasure Island y YBI



Por favor únete a One Treasure Island mientras ofrecemos la oportunidad de compartir información y comunicarnos entre la comunidad de Treasure Island acerca de actividades y eventos que relacionan a la comunidad y el desarrollo de la isla.

Miércoles 17 de septiembre entre 6:00 pm y 7:30 pm

Las reuniones son
mensuales vía zoom



No es necesario
registrarse. Sólo escanee
el código QR para unirse
a la reunión



<https://us02web.zoom.us/j/81056789872>

金銀島/YBI 社區會議



請加入 One Treasure Island 社區會議，我們在此提供機會分享資訊和互相溝通有關社區參與活動／事件，以及金銀島的發展。

9月17日星期三 · 下午 6 時至 7:30

會議每隔一個月用 Zoom 在網上舉行

無須登記。只掃描此 QR 二維碼即可加入會議



<https://us02web.zoom.us/j/81056789872>



Treasure Island Community Ambassador Program Orientation



The One Treasure Island Community Ambassador Program (TI CAP) is a two-year part time on the job training program, and civic engagement initiative. TI Community Ambassadors are trained to promote inclusion, safety, and awareness of local services for residents, workers, and visitors of Treasure Island and Yerba Buena Island.

If you're someone who loves making a real impact in your community, TI CAP might be your perfect fit!

☀️ **Do you shine when...**

- ✓ Meeting new people?
- ✓ Helping and giving back to your community?
- ✓ Sharing your energy and positivity?
- ✓ Thriving to make a difference and create impact in our community

Come out and learn about this new and exciting program and how you can give back to the Treasure Island community!

Must come to the orientation to apply!

 **October 9, 2025**

 **5:30pm to 7pm**

 **Sherry Williams Community Center
850 Ave I, Treasure Island**

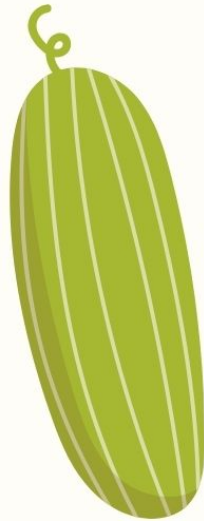


**COMMUNITY
LIVING CAMPAIGN**



NUTRITION WORKSHOP

FOOD SMART

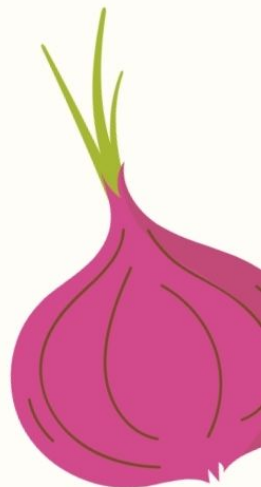


THURS SEPT 18
6-8PM

**SHERRY WILLIAMS
COMMUNITY CENTER**



**Learn to create a "whole plate"
and read nutrition labels.
Includes a cooking demo!**





FALL HARVEST CRAFT DECORATION WORKSHOP



Celebrate the season with creativity!

Join us for a fun, hands-on workshop where you'll make your own fall candle, soap, wreath, or potpourri. Perfect for all ages, this workshop is a great way to welcome autumn, connect with your neighbors, and take home a beautiful handmade piece to brighten your home or a gift for your loved ones!

 **Date: November 7th (Friday)**

 **Time: 5-8pm**

 **Sherry Williams Community Center
850 Ave I, Treasure Island**



**Scan QR code
or call 415-426-
6904 to sign up!**

hello
FALL

★ 舰队周与 长者美味午餐会 ★



欢迎参加特别的长者午宴，一同庆祝舰队周的提前启动！
享用由 Mersea 精心准备的美味餐点，结识邻里朋友，
参与有趣的游戏，共同感受舰队周庆典的热烈氛围！

 日期：10月2日（星期四）

 时间：下午12点—2点

 Sherry Williams 社区中心
850 Ave I, Treasure Island

** (建议着装：海军蓝与白色主题)



扫描二维码或致电
415-426-6904 报名！

欢迎所有长
者参加！



须提前报名!!

★ FLEET WEEK & SENIOR LUNCHEON ★



Join us for a special luncheon honoring our seniors while celebrating early Fleet Week kickoff! Enjoy a delicious meal catered by Mersea, connect with neighbors, fun games and take part in the excitement of early Fleet Week celebration.

 **Date: October 2nd (Thursday)**

 **Time: 12-2pm**

 **Sherry Williams Community Center
850 Ave I, Treasure Island**

*****(suggested dress code: Navy & white theme)*****

**all seniors are
welcome!**



**Scan QR code
or call 415-426-6904
to sign up!**

**MUST
REGISTER TO
ATTEND**

★ SEMANA DE LA FLOTA Y ALMUERZO PARA PERSONAS MAYORES ★



Únase con nosotros para un almuerzo especial en honor de nuestros adultos mayores mientras celebramos el inicio anticipado de la Semana de la Flota.

Disfrute deliciosa comida a cargo de Mersea, conecte con sus vecinos, participe en divertidos juegos y forme parte de la emoción de esta celebración.

 Fecha: 2 de Octubre (Jueves)

 Tiempo: 12:00PM a 2:00PM

 Centro Comunitario Sherry Williams
850 Ave I, Treasure Island

(Código de vestimenta sugerido: azul marino y blanco)



¡Escanee el código
QR o llame al 415-
426-6904 para
inscribirse!

¡Todos los adultos
mayores son
bienvenidos!



ES NECESARIO
REGISTRARSE PARA
ASISTIR

**Treasure Island and
Yerba Buena Island**

HALLOWEEN



Party



Music • Food • And More

OCT 25

12:00 PM

TI Community Park

**Pumpkin Patch, Halloween
Costume Contest (**adults
and youth**), Face Painting,
games, Raffle Prizes, Food,
dancing, jumpers and
MORE.....**

**Scan QR code
or call 415-426-6904
to sign up!**





Celebrate the season on Treasure Island's waterfront with a family-friendly festival full of harvest favorites at the newly opened Cityside Park. Enjoy a picture-perfect pumpkin patch, hay bale pyramid, bounce houses, and an adorable petting zoo - all set against sweeping views of the Bay and city skyline, just an 8-minute ferry ride from downtown San Francisco.

Warm up with Silverwings Coffee, savor sweet treats, listen to live music, and capture seasonal snapshots among the pumpkins throughout the day.

It's the perfect autumn outing - festive, cozy, and fun for all ages.

**Scan QR code to
RVSP for FREE**



Date:

October 5th
10am - 4pm

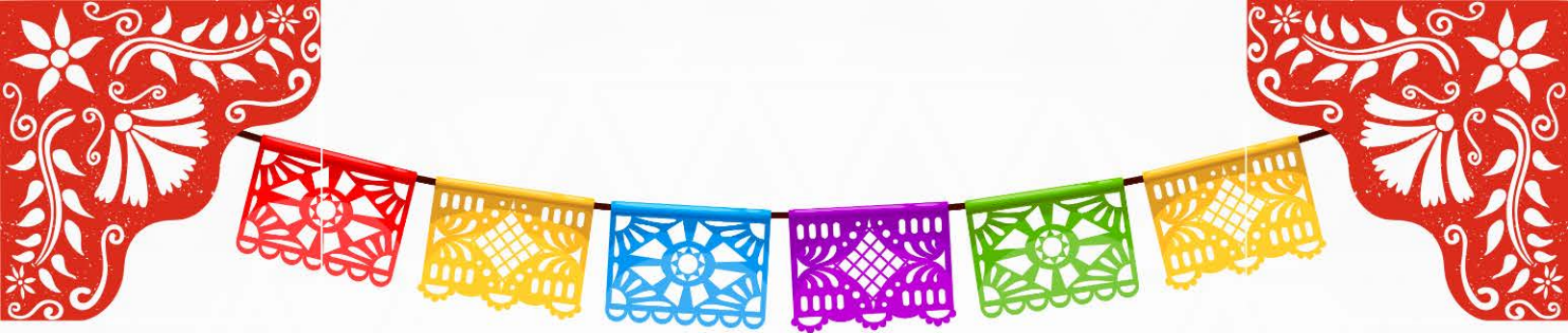
Location:

Cityside Park
387 Avenue of Palms
San Francisco, CA

*Ferry service is recommended, with \$5 fares
for adults and free rides for children under 5*

Reserve ferry tickets:

<https://tinyurl.com/vd46s53a>



NATIONAL HISPANIC HERITAGE CELEBRATION

Come join the fun! Everyone is welcome to learn and experience the vibrant flavors, rhythms, and traditions of Hispanic culture - dance salsa, make homemade tortillas, play fun games, explore art tables, and so much more!

Date: September 27th (Saturday)

Time: 12 - 3pm

Location: Sherry Williams Community Center
850 Ave I, Treasure Island



Scan QR code
or call 415-426-6904
to sign up!





西班牙裔传统 节日庆典

欢迎所有种族的居民一起学习和体验充满活力的西班牙裔文化风味、节奏与传统—跳萨尔萨舞、制作手工玉米饼、玩趣味游戏、手动的艺术桌，还有更多精彩活动等着你！

日期：9月27日（星期六）

时间：中午12点至下午3点

地点：Sherry Williams 社区中心

850 Ave I, Treasure Island



扫描二维码

或致电 415-426-6904

报名参加！





HERENCIA HISPANA CELEBRACIÓN NACIONAL

¡Ven y únete a la diversión!

¡Todos son bienvenidos a aprender y experimentar los vibrantes sabores, ritmos y tradiciones de la cultura hispana! —
baila salsa, prepara tortillas caseras, juega juegos divertidos,
explora mesas de arte ¡y mucho más!

Fecha: 27 de septiembre (sábado)

Hora: 12:00 p.m. – 3:00 p.m.

Lugar: Centro Comunitario Sherry Williams
850 Ave I, Treasure Island



¡Escanea el código QR
o llama al 415-426-6904
para inscribirte!



Job Fair

October 30th 2025

Looking for your next opportunity?

Join us at our upcoming Job Fair! A chance to connect with local employers, explore open positions, and take the next step in your career. Whether you're just starting out, looking to grow, or ready for a change, this event brings together opportunities and resources to support your journey.



WHERE COMMUNITY
— CONNECTS —

Unlock your potential. Right here, right now!



10/30/2025

10:00 AM – 2:00 PM



850 Avenue I
San Francisco CA 94130



Chance to win \$50 Target gift card!



Dress professionally to make a great first impression

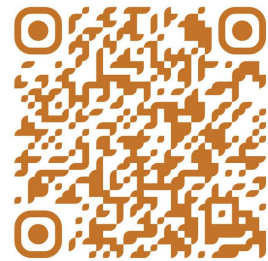


Bring extra copies of your resume

Take the first steps towards a fulfilling career!
Register now online!



<https://www.onetreasureisland.org/events/octoberjobfair>



**Scan to
Register!**

Employers you'll meet:



Questions? Feel Free to reach out to:

Arion Chapman (415)274-0311 ext. 308 or Betsy Ramazzini (415)274-0311 ext. 318



Get Better. Do Better. Be Better.

x



Mobile & Street Medicine is coming to Treasure Island



**WALK UPS
ENCOURAGED!**

WE ARE:

Open to All (18+)
Trauma-Informed
Person-Centered

OUR SERVICES INCLUDE:

-  Primary & Urgent Medical Care
-  STI Testing & Treatment
-  HIV & Hepatitis Care
-  Wound Care
-  Substance Use Counseling & Treatment
-  Case Management & Referrals
-  Benefits Enrollment
-  Behavioral Health and Psychiatry

OUR TEAM:

- Medical Providers
- Nurses
- Medical Assistants
- Case Managers
- Community Outreach Workers



MOBILE MEDICAL VAN LAUNCH

SHERY WILLIAMS COMMUNITY CENTER
850 AVE I, SF, CA

OCTOBER 23, 2025
(starting Oct 23rd, every Thursday)
11:00 AM - 3:00 PM





A NEW SATURDAY TRADITION ON THE BAY



Every Saturday through November, Cityside Park becomes the Bay's newest gathering spot. More than 15 food trucks and pop-ups dish out coastal flavors, from Greek mezze and Italian pizza to Spanish paella, French pastries, and more. Families will love lawn games and face painting, friends can linger over cocktails with skyline views, and dogs are welcome, too. Whether you're here for a quick bite or the full day, Off the Grid Treasure Island is designed to feel like a getaway in your own backyard.

****To accommodate increased ridership due to the expected increase in traffic for Off the Grid events, the Treasure Island Ferry will be running additional non-scheduled runs between San Francisco Gate B and Treasure Island on Saturdays through November 1st.**

SATURDAY DATES:

SEPTEMBER 13
SEPTEMBER 20
SEPTEMBER 27
OCTOBER 4
OCTOBER 11
OCTOBER 18
OCTOBER 25
NOVEMBER 1

TIME:

11AM – 4PM

LOCATION:

CITYSIDE PARK
387 AVENUE OF THE PALMS
TREASURE ISLAND, SAN
FRANCISCO

Plan your weekend
escape and join us at
Cityside Park every
Saturday.

**All residents are
welcome!!**

PADDLEBOARD & KAYAK RENTALS

TREASURE ISLAND SAILING CLUB

STAND UP SUNDAYS

Make Sundays an adventure at Clipper Cove with paddleboard and kayak rentals. Explore the Bay from the water, take in skyline views, and enjoy Treasure Island's best kept secret in a new way.

Rentals are available every Sunday from September 14 through November 2. Reserve your gear at <https://fareharbor.com/embeds/book/kgbswag/items/>



CLIPPER COVE

8442 Treasure Island Rd,
San Francisco, CA 94130



EVERY SUNDAY

9AM - 3PM



Scan QR code

Job Fair

October 30th 2025

Looking for your next opportunity?

Join us at our upcoming Job Fair! A chance to connect with local employers, explore open positions, and take the next step in your career. Whether you're just starting out, looking to grow, or ready for a change, this event brings together opportunities and resources to support your journey.



WHERE COMMUNITY
— CONNECTS —

Unlock your potential. Right here, right now!



10/30/2025

10:00 AM – 2:00 PM



850 Avenue I
San Francisco CA 94130



Chance to win \$50 Target gift card!



Dress professionally to make a great first impression

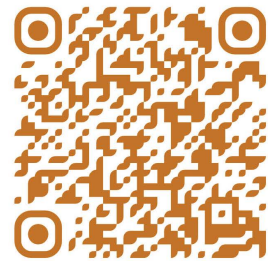


Bring extra copies of your resume

Take the first steps towards a fulfilling career!
Register now online!



<https://www.onetreasureisland.org/events/octoberjobfair>



**Scan to
Register!**

Employers you'll meet:



Questions? Feel Free to reach out to:

Arion Chapman (415)274-0311 ext. 308 or Betsy Ramazzini (415)274-0311 ext. 318



TREASURE ISLAND

SAN FRANCISCO

SAVE THE DATE

CITYSIDE PARK OPENING CELEBRATION

SATURDAY, SEPTEMBER 13

Cityside Park

387 Avenue of the Palms, San Francisco, CA

Join us for a special ribbon-cutting ceremony to celebrate the opening of Cityside Park—a once-in-a-generation addition to the San Francisco waterfront.

This new public space offers unmatched views of the Golden Gate, Bay Bridge, and full city skyline—all just an 8-minute ferry ride from downtown or a 15-minute walk from anywhere on the island. Cityside Park invites you to experience the city from an entirely new perspective, opening as Treasure Island reaches a major milestone: the delivery of nearly 1,000 new homes and a landmark civic space at the heart of the Bay.

Formal invitation and event details to follow.

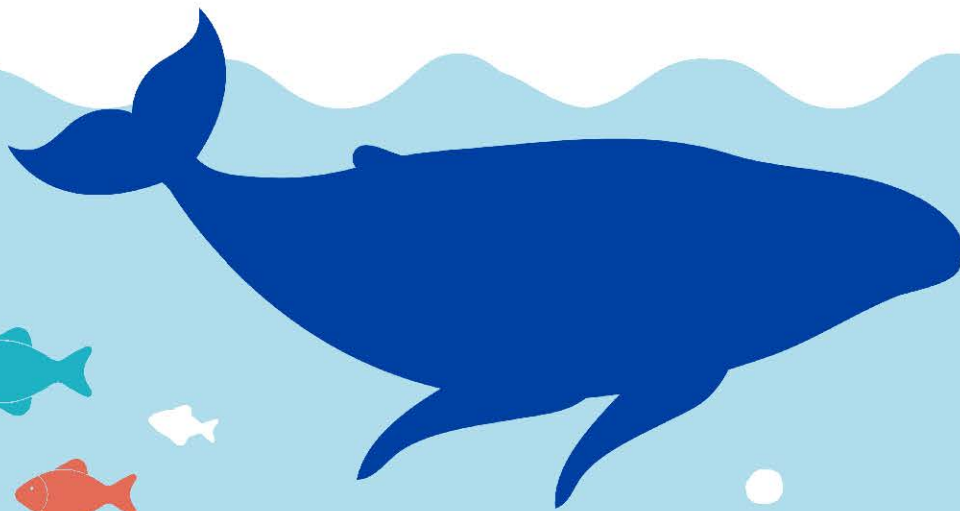


SCAN TO RSVP
TREASUREISLAND.COM



COASTAL CLEAN UP DAY

Trashure Hunt on Treasure Island



SATURDAY, SEPTEMBER 20th, 2025

10:00 AM - 1:00 PM

39 Treasure Island Road, San Francisco CA

REGISTER HERE:

<https://tinyurl.com/coastti>





Treasure Island Time Machine

~ retro vibes, cocktails, and dancing ~

Step back in time and back into historic Building One for a memorable night of **music, dancing, and Gold Bar Distillery cocktails** featuring live music by the **Nick Rossi Swing Six.**

Saturday, October 18

7:00 to 10:00 PM

doors and bar open at 6:00 PM



tickets and details



Treasure Island and Yerba Buena Island Electric System

Background

The Treasure Island Development Authority (TIDA) and the San Francisco Public Utilities Commission (SFPUC) oversee different areas of the electrical system on Treasure and Yerba Buena Islands.

TIDA owns the old “legacy” electric system on Treasure Island, which the U.S. Navy transferred to TIDA in 1997. The SFPUC operates and maintains the legacy electric system for TIDA, providing electricity to residents and businesses in the northern and eastern areas of Treasure Island. The SFPUC also responds to power outages in these areas, performs TIDA-approved maintenance, and works with TIDA on electric system improvements.

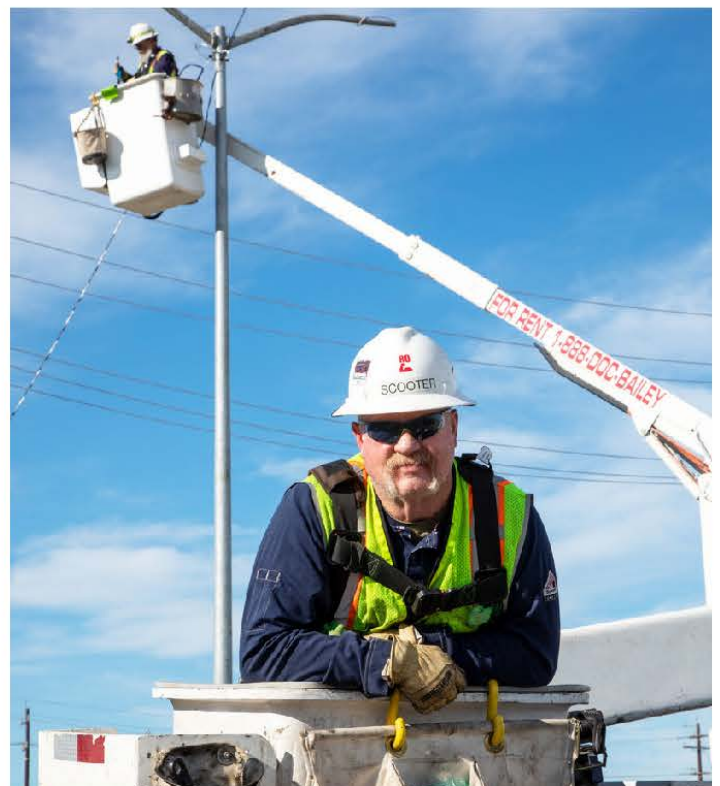
The legacy electric system is being phased out and replaced by a modern system funded by new development as part of a major revitalization effort called the Treasure Island/Yerba Buena Island Development Project. The SFPUC provides electricity to Yerba Buena Island and new developments on Treasure Island as part of this revitalization. As development continues, the legacy electrical system will gradually be replaced.

Improving Legacy System Reliability

The legacy electric system on Treasure Island is old and has exceeded normal life expectancy. The age of the system and condition of the equipment make the areas served by the legacy system vulnerable to power outages.

Power outages arise when something interrupts the distribution of electricity through the system. These “faults” can result from a variety of causes, including fallen tree limbs, birds or other wildlife, and malfunctioning equipment.

TIDA and the SFPUC work collaboratively to improve the reliability of the legacy system. With TIDA's approval, the SFPUC performs regular system maintenance, conducts planning, and implements improvement projects that maximize the value of public investment.



Transmission & Distribution Line Workers installing temporary lights for the new Treasure Island switchyard.



Treasure Island switchyard at Avenue M & 10th Street

The following improvements have been made to improve the reliability of the legacy electric system.

- **New Switchyard and Switchgear:** Constructed a new switchyard and switchgear to isolate certain fault events, reduce impacts to the residential neighborhood, and prevent island-wide outages.
- **Replacement of Damaged Crossarms and Transformers:** Replaced damaged crossarms and transformers at various locations through the legacy system. Bird guards are now a standard component on all new transformers.
- **New Fault Indicators and Reclosers:** Installed numerous fault indicators and reclosers throughout the island, which assist crews in determining the location of a fault and limiting outages to just a portion of the system.
- **New Overhead Line:** Installed and constructed a new overhead line from the switchyard, increasing the reliability of the main line serving both islands.
- **Retired Outdated Equipment:** Retired old, outdated equipment such as the Clipper Cove submarine cable (completed) and legacy switching equipment (pending).

- **Bird Guards:** Consistently analyze overhead system bird strike events and install additional bird guards on vulnerable overhead lines.
- **Vegetation Management:** Regular monitoring and trimming of trees on Treasure Island to maintain clearance around overhead lines and other infrastructure.
- **Relay Settings Updated:** Adjusted the relays at the Port of Oakland Substation to allow the circuits and reclosers to better isolate a fault before it results in a system-wide outage.
- **System-Wide Inspection:** Completed inspection of the overhead distribution system and identified components to be replaced.

Ongoing Monitoring

- **Continuous Inspections:** Perform continuous inspections to mitigate potential system failures, including regular tree trimming or removal.
- **Protective Device:** Regularly monitor the protective device response and performance to further mitigate system-wide outages.

Questions?

Contact:

San Francisco Public Utilities Commission at:
(415) 554-3289 or email communications@sfgov.org

Treasure Island Development Authority at:
(415) 274-0660 or email TIDA@SFGov.org



Treasure Island Time Machine

~ retro vibes, cocktails, and dancing ~

Step back in time and back into historic Building One for a memorable night of **music, dancing, and Gold Bar Distillery cocktails** featuring live music by the **Nick Rossi Swing Six**.

Saturday, October 18

7:00 to 10:00 PM

doors and bar open at 6:00 PM



50% off tickets for TI residents
use the code **94130** at check out