

ITEM 9
Treasure Island Development Authority
City and County of San Francisco
Meeting of September 10, 2025

Subject: Informational Presentation regarding initiation of the Treasure Island Urban Agricultural Park Implementation planning effort.

Staff Contact: Allison Albericci, Major Sites Principal Planner
allison.albericci@sfgov.org | 628.652.1315

SUMMARY

TIDA is undertaking an implementation planning effort for the Treasure Island Urban Agricultural Park (UAP). This is the first informational presentation introducing the Board and the Public to the objectives, scope, process and timeline proposed for this project.

BACKGROUND

The Treasure Island and Yerba Buena Island Development Project envisions a sustainable, resilient, and inclusive community. As part of this vision, the adopted Development Agreement, Design for Development (D4D), and Parks and Open Space Plan documents include establishment an Urban Agricultural Park to support food security, ecological stewardship, and community equity¹. The plan documents describe the basic components of an organic "full production urban farm and/or nursery producing fresh produce or nursery stock for project planting and ongoing maintenance and restoration activities..." to "...be managed and operated by a farm operator or non-profit organization."² However, detail regarding the optimal range of uses to be served, viable program elements and sizes, critical adjacencies, as well as operations and maintenance, funding, phasing, and implementation logistics were left for others to define.

The UAP is intended to serve a broad range of users, potentially including residents, nonprofits, educational institutions, workforce training programs, and local businesses. The Implementation Plan will define the UAP's program, conceptual design, operations, governance, and funding strategy, and will guide its integration into the broader TI/YBI development.

PROJECT PURPOSE AND GOALS

The Implementation Plan will:

- Define a clear vision, program and physical framework for the UAP.

¹ Treasure Island and Yerba Buena Island Design for Development (D4D), 2024; pages 90-91.

² Treasure Island and Yerba Buena Island Open Space Plan, 2011; page 42.

- Identify the range of proposed agricultural and ecological uses, including community gardens, production farming, native plant nurseries, educational gardens, horticultural therapy, apiculture (beekeeping), agritourism, and direct-to-consumer sales.
- Consider opportunities and strategies for public art, in accordance with the Treasure Island Arts Masterplan.
- Establish a governance and operations model, including potential operators and maintenance responsibilities.
- Develop a phased implementation strategy aligned with Treasure Island's broader development timeline.
- Ensure the UAP is inclusive, accessible, and financially sustainable.

PARTICIPANTS AND ROLES

The project will be led by TIDA with critical staff support from SF Planning. The process includes a robust program of engagement Project Partners, Stakeholders, and Technical Advisors, the TIDA Board and the broader community (as further described in Exhibit C):

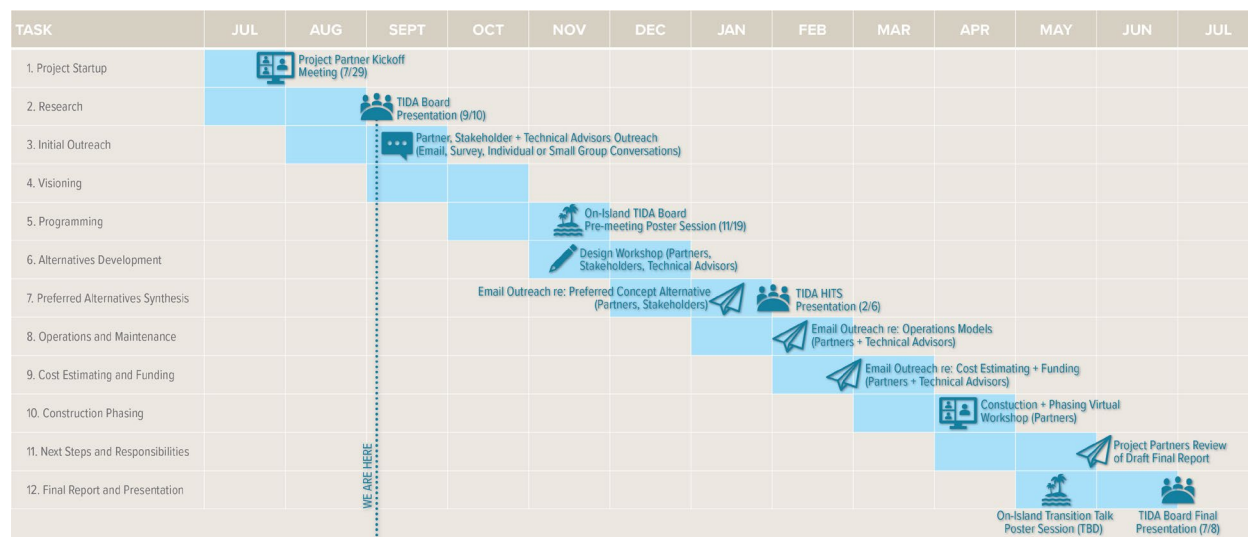
- Project Partners: TICD/TIDG, OneTI, SF Planning, RPD, ENV, DPW, DPH,
- Stakeholders (e.g., Indigenous Permaculture, ARO, SF-Marin Food Bank, TIJC, *et al*)
- Technical Advisors (e.g., ACRCDD, SAGE, Friends of Alemany Farm, PODER, LEJ, *et al*)

SCOPE OF WORK

The project will be completed over 12 months (July 2025 – June 2026) and includes the following key tasks (as further described in Exhibit A, attached):

1. Project Startup – Establish base plans, schedule, and stakeholder engagement framework.
2. Research – Analyze best practices, site conditions, regulatory requirements, and potential synergies.
3. Outreach – Engage partners, stakeholders and technical advisors to inform programming and design.
4. Visioning – Develop a shared vision and guiding principles.
5. Programming – Define space needs, user groups, and critical adjacencies.
6. Alternatives Development – Create and evaluate 2–3 concept plans.
7. Preferred Alternative – Synthesize feedback into a preferred concept.
8. Operations Plan – Identify potential operators and draft a selection framework.
9. Cost & Funding Strategy – Estimate capital and operational costs; identify funding sources.
10. Construction Phasing – Align with TI development and identify early implementation opportunities.
11. Implementation – Outline next steps, roles, approvals, and timelines.
12. Final Plan – Produce final documentation and presentation materials.

PROJECT SCHEDULE



INITIAL EFFORTS

The project launched in July 2025, with creation and distribution of the draft Scope of Work to project partners for review and comment. Since then, staff have also:

- Finalized the Scope with input from Project Partners (see Exhibit A)
- Hosted a Project Partner Kick-off meeting (see Exhibit B), and subsequently onboarded additional participants.
- Crafted an Outreach / Engagement strategy (see Exhibit C), and organized the list of Stakeholders and Technical Advisors to contact.
- Conducted initial research, including a site tour of SFPUC-owned Sunol AgPark.

NEXT STEPS

- Continue stakeholder outreach and research through Fall 2025.
- Present draft vision and program to the Board and community at the on-Island meeting in November 2025.
- Collaborate to develop alternatives and synthesize a preferred concept plan in Winter 2026.

RECOMMENDATION

None. Informational. TIDA staff are seeking Board and Public comment on the proposed objectives, scope, process and timeline.

EXHIBITS

- A Treasure Island Urban Agricultural Park Implementation Plan Scope
- B Project Partner Kick-off Meeting Presentation
- C Outreach / Engagement Memo

Exhibit A

Treasure Island Urban Agricultural Park Implementation Plan Scope



TREASURE ISLAND DEVELOPMENT AUTHORITY

39 TREASURE ISLAND ROAD, SUITE 241
SAN FRANCISCO, CA 94130
MAIN (415) 274-0660 | FAX (415) 274-0299
WWW.SFTREASUREISLAND.ORG



TREASURE ISLAND URBAN AGRICULTURAL PARK IMPLEMENTATION PLAN

FINAL: July 11, 2025

TIDA Contact: Allison Albericci, Major Sites Principal Planner
628.652.1315 | allison.albericci@sfgov.org

Purpose: The project will create a program, conceptual design, and implementation plan for the Treasure Island Urban Agricultural Park (UAP), for consideration and endorsement by the TIDA Board of Directors, and subsequent integration into the TI/YBI Development.

Duration: 12 Months (July 1, 2025 – June 30, 2026)

Participants:

TIDA	Bob Beck, Director; Allison Albericci, Major Sites Principal Planner; Peter Summerville, Administrative Analyst; Kiah McCarley, Community Development Specialist; Jamie Querubin, Finance Manager
OneTI	Nella Goncalves, Executive Director, Rheanna Binkley, Community Initiatives Manager
CPC	Josh Switzky, Deputy Director of Citywide Planning; Jessica Look, Sr. Planner; Patrick Race, Sr. Planner
DPW	Jennifer Cooper, Landscape Architecture Bureau Manager; Jon Swae, Bureau of Urban Forestry
RPD	Eric Andersen, Director of Operations; Carol Sionkowski, Deputy Director; Yael Golan, Planning; Kelli Rudnick, Project Manager Supervisor; Mei Ling Hui, Volunteer/Outreach Coordinator Urban Agriculture
ENV	Peter Brastow, Senior Environmental Specialist
TICD/TIDG	Charles Shin, Managing Director; Andy Wang, Senior Development Manager; Magdalena Myszk, Project Manager; Danielle Butler, Development Manager

Introduction

The Treasure Island and Yerba Buena Island Development Project is building a new sustainable neighborhood, complete with thousands of homes, extensive parks and open space, dynamic public facilities, and vibrant amenities and services. Adopted in 2011, the Development Plan includes provisions for an Urban Agricultural Park (UAP), which is critical to the resilience and equity goals of the project. Indeed, achieving food security across this mixed-income community is fundamental to the project mission and facilitates synergetic opportunities for educational and social benefits alongside stewardship of the land.

The adopted *Treasure Island and Yerba Buena Island Parks and Open Space Plan* describes the basic components of an organic "full production urban farm and/or nursery producing fresh produce or nursery stock for project planting and ongoing maintenance and restoration activities..." to "...be managed and operated by a farm operator or non-profit organization" (p. 42). However, detail regarding the optimal range of uses to be served, viable program elements and sizes, critical adjacencies, as well as operations and maintenance, funding, phasing, and implementation logistics were left for others to define.



TREASURE ISLAND AND YERBA BUENA ISLAND OPEN SPACE PLAN, 2011

Project Brief

This Implementation Plan will delineate a clear vision, specific program, and an actionable process for realizing the Urban Agricultural Park (UAP) as a vital community and ecological asset. The UAP is intended to serve a wide range of users, including residents, nonprofit organizations, educational institutions, workforce training initiatives, island-serving businesses, and visitors. Potential uses under consideration include (but are not limited to): small-scale community garden plots, native plant nursery space, production farming for food distribution programs, educational gardens, facilities supporting agritourism, apiculture (beekeeping), and sustainable wholesale supply to island restaurants and markets. The agricultural park was also envisioned to incorporate nursery space and a maintenance yard/facility for the city agencies and contractors that maintain and restore the parks and open space resources on the island.

This project will identify the specific range of agricultural and supporting uses to be prioritized within the Treasure Island UAP and the quantity of space necessary to accommodate these uses. It will also establish a programming and operational framework, addressing questions of management, maintenance, funding, and governance. A key component of this planning effort is ensuring that the UAP is accessible, inclusive, and financially sustainable over the long term. In addition to defining programming and operational models, the Implementation Plan will assess whether adjustments to the planned site boundaries are needed to support the UAP's success. The plan will outline the necessary steps and timelines to secure the required approvals and move toward implementation in alignment with the broader phasing and development of Treasure Island.

This concept design, programming, and implementation planning project will answer the following questions:

- What will it take to implement the planned Urban Agricultural Park on Treasure Island? Who will the park serve?
- What range of agricultural, ecological, and supporting uses should the UAP include? How much space is needed?
- How (and by whom) will the Urban Agriculture Park be operated and maintained?
- How (and by whom) will the Urban Agriculture Park be funded and constructed?
- What immediate steps need to be taken to secure approval and implement the project, by whom, and on what timeline?

Process

The project is envisioned to proceed according to the following tasks, with deliverables for each task as noted below.

Task 1. Project Start up

- Set up Project Base Plans
- Refining Schedule and key dates
- Kick-off Meeting with Project Participants
- Develop Stakeholder Participation / Outreach Plan
- Set up Stakeholder and Technical Advisory frameworks and participant groups, if applicable

Deliverables

- Kickoff Meeting Summary and Action Items
- Stakeholder Outreach and Technical Advisory Framework Memo
- Schedule for Stakeholder Outreach and Technical Advisory Input

Task 2. Research

- Urban Agriculture Precedents and Best Practices, including organic farming requirements.
- Carbon Farm Plan: <https://www.carboncycle.org/carbon-farm-planning/>
- Survey of RPD Urban Agriculture sites in San Francisco (info from RPD)
- Survey of non-profits and other groups that work in Urban Agriculture
- Regulatory conditions including State Lands requirements and restrictions, and LEED requirements.
- What grows on Treasure Island? Crops and Growing Seasons analysis. Outdoor vs. Greenhouse.
- What are the opportunities and constraints for fauna? Small Livestock? Chickens? Bees? Aquaculture?
- Identify and assess potential productive synergies, such as wind and solar energy generation, etc.
- Identify any critical thresholds for viability of commercial operations; assess potential yield at various scales.

Deliverables

- Existing and Planned Conditions Analysis
- Opportunities and Constraints Analysis
- Precedents and Best Practices Research Memo

Task 3. Initial Outreach

- Conduct focused outreach to Potential Stakeholders – Consult
- Solicit input from Technical Advisors – Advise

Deliverables

- Outreach Log / Contact List
- Stakeholder Interview / Questionnaire Summary Memo
- Technical Advisor Interview / Questionnaire Summary Memo
- Presentation of key Recommendations

Task 4. Visioning

- Establish a shared vision for the Urban Agricultural Park among potential stakeholders and other users.
- Establish principles to guide UAP development, implementation, operations, and maintenance.

Deliverables

- Shared Vision Statement for the Urban Agricultural Park
- Guiding Principles

Task 5. Programming

- Expand on the program contained in the TI/YBI Parks and Open Space Plan, and the Treasure Island Arts Masterplan.
- From the Stakeholder and Technical Advisor input, detail the program elements to be accommodated within the UAP, the quantity of space for each element (minimum required / recommended), and any critical adjacencies.

Deliverables

- Draft Program Matrix (elements, space needs, users, operational needs)
- Program Narrative with Critical Adjacencies Diagram

Task 6. Alternatives Development

- Design Workshop with project partners to contribute concept design ideas
- Create 2-3 Alternative Concept Plans for the UAP, featuring different approaches to programming and space planning, overall size, as well as potential new boundaries for the UAP land use (if applicable).
- Assess each alternative for relative achievement of the vision and guiding principles
- Gather feedback from Stakeholders and Technical Advisor groups

Deliverables

- 2-3 Concept Plan Alternatives (site plans + brief narratives)
- Comparative Evaluation of Alternatives against Vision and Principles
- Summary of Stakeholder and Technical Advisor feedback

Task 7. Preferred Alternative Synthesis

- Synthesize feedback into a preferred conceptual plan
- Assess any implications for integration into future TI/YBI Plan Amendments, as needed

Deliverables

- Preferred Concept Plan (illustrative plan + narrative)
- Summary of amendments to TI/YBI Plan (if applicable)

Task 8. Operations and Maintenance Plan

- Who could operate and maintain the UAP?
- How will TIDA/CCSF determine the operator(s)?

Deliverables

- Operations Scenarios and Roles Memo
- Draft Operator(s) Selection Framework
- Draft Outline for Operations Plan to be created by future Operator(s)

Task 9. Costs Estimate and Funding Strategy

- Determine order-of-magnitude cost of construction for build-out
- Evaluate phasing scenarios and corresponding costs
- Elaborate DA obligations and determine funding and/or facility gaps
- Identify funding sources for initial cost of construction.
- Identify ongoing operations and maintenance budget and funding?
- Establish program component prioritization (if applicable)

- Describe the capital planning process and relevant milestones

Deliverables

- Preliminary Capital Cost Estimate
- Operating Budget Framework
- Potential Funding Sources Matrix

Task 10. Construction Phasing and Timing

- Treasure Island Development Construction Phasing coordination
- Construction sequencing for UAP

Deliverables

- UAP Construction Phasing Plan, including early implementation / pilot project opportunities.
- TI Development Coordination Memo

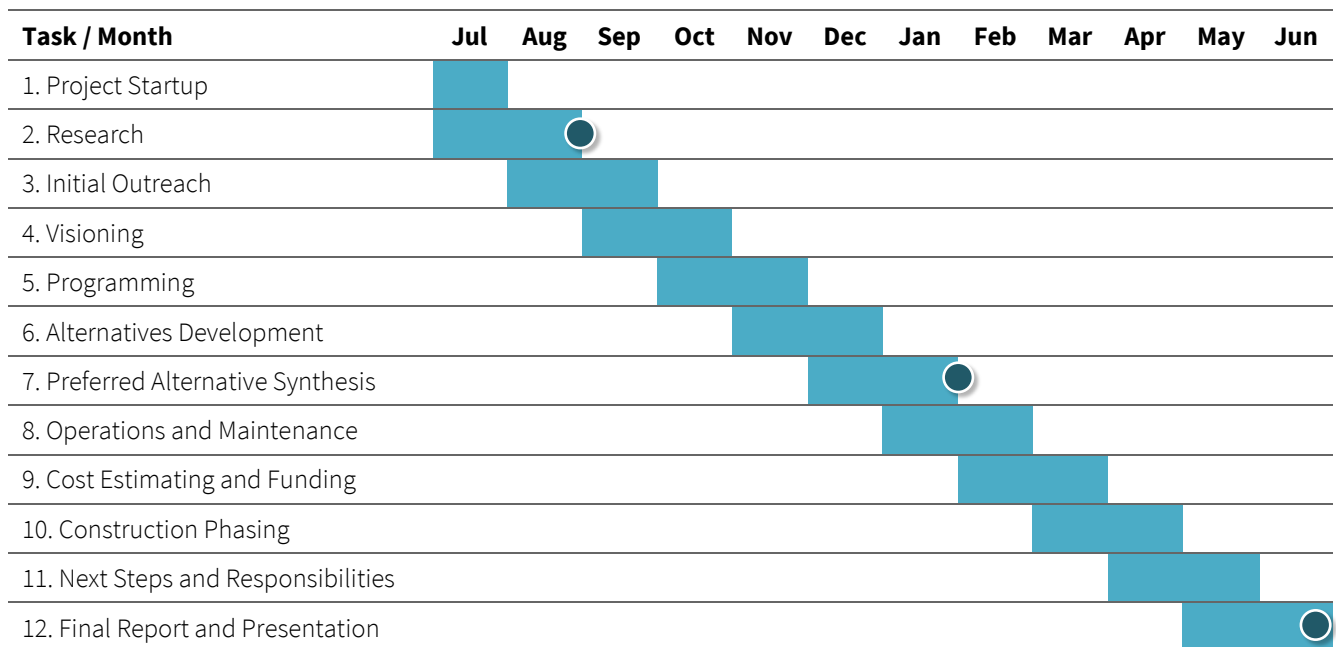
Task 11. Next Steps and Responsibilities for Implementation

- Identify Implementation steps, roles and responsibilities
- Identify necessary approvals and timelines to secure (TIDA Board, Planning/CEQA, State Lands, SFBR-WQCB, Others?)

Deliverables

- Summary of Implementation Responsibilities and Timelines
- Approvals Checklist and Environmental Review Needs Memo (if applicable)
- Staff Memo to TIDA Board
- Final Implementation Plan Presentation Materials
- Final Implementation Plan Report

Preliminary Schedule



Concluding Action

The project will conclude with a presentation to the TIDA Board. A public presentation at a community open house or other on-island event will also be considered.

Staffing / Roles and Responsibilities

The project will be directed by TIDA, with Allison Albericci serving as lead. The project will be managed and staffed with support from the Planning Department, with Jessica Look serving as project manager. Project Partners and Stakeholders from the City Family, OneTI, and TICD will provide input.

Role	Name	Entity	Responsibility	FTE
Project Director	Allison Albericci	TIDA	Reviews, approvals, presentations, strategy and critical communications	
Project Manager	Jessica Look	CPC	Manages team and external communication, serves as point person, manage schedule	
Core Team	Jessica Look	CPC	Planning	
	Patrick Race	CPC	Landscape Architecture	
	Peter Summerville	TIDA	Facilities	
	Kiah McCarley	TIDA	Engagement	
Support	Input from project partners, stakeholders and technical advisors, as noted above			

Attachments:

- Preliminary list of Precedents and References
- Preliminary list of Stakeholders and Technical Advisors for Outreach
- Treasure Island and Yerba Buena Island Design for Development, page 90
- Treasure Island and Yerba Buena Island Parks and Open Space Plan, pages 13 and 42-43

a. Preliminary list of Precedents and References

Farms	Location	Contact	Website
Aleman Farm	San Francisco, CA	Abby Bell	https://alemanyfarm.org/
Hummingbird Farm	San Francisco, CA	Tere Almaguer/ tere@podersf.org	https://podersf.org/hummingbird-farm/
ANV Farm @ Tassafaronga Park	Oakland, CA	Kelly Carlisle	https://anvfarm.org/our-farm/
Star Route Farms	Bolinas, CA	Annabelle Lenderink/ starroutefarms.org	https://www.starroutefarms.org/
Green Gulch Farm	Muir Beach, CA	Sara Tashker/ ggfoffice@sfzc.org	https://www.sfzc.org/locations/green-gulch-farm/about-green-gulch-farm
Pie Ranch	Pescadero, CA	Leonard Diggs	https://www.pieranch.org/
TomKat Ranch	Pescadero, CA	Wendy Millet	https://www.tomkatranch.org/
Red Dot Ranch	Pescadero, CA	Karen Curtiss	https://www.reddotranch.org/
Heron Shadow	Sebastopol, CA		https://www.nativeland.org/heron-shadow
Capay Organic	Capay, CA	Thaddeus Barsotti	http://capayorganic.com/
Beacon Food Forest	Seattle, WA	Khalil Griffith	https://www.beaconfoodforest.org/
Rainier Beach Urban Farm & Wetlands	Seattle, WA	Site Coordinator rburbanfarm@gmail.com	https://tilthalliance.org/our-work/urban-farms-gardens/rainier-beach-urban-farm-wetlands/
Ekar Farm	Denver, CO	Jason Plotkin	https://www.ekarfarm.org/
Ohio City Farm	Cleveland, OH	Michael Bartunek/ michael@resourcecleveland.org	https://www.ohiocityfarm.com/

Community Gardens

RPD Community Gardens	San Francisco, CA (42 sites)	Mei Ling Hui	https://sfrecpark.org/1403/Community-Gardens
Golden Gate Park Community Garden	San Francisco, CA		https://ggpgarden.wordpress.com/about/
Tenderloin People's Garden and Webster Street People's Garden	San Francisco, CA	Julie Pavuk	https://www.tndc.org/our-work/health/health-wellness-program/urban-agriculture
Parklab Community Garden	San Francisco, CA	Kent Anderson	https://www.urbansprouts.org/parklab
West Oakland Farm Park	Oakland, CA	Kelly D. Carlisle	https://anvfarm.org/our-farm/west-oakland-farm-park/
Treasure Island Community Garden	San Francisco, CA	Guillermo Vasquez/ iiis.indigenous.permaculture@gmail.com	https://growingroots.berkeley.edu/know-your-farmer-guillermo-vasquez/

Educational Farms / Gardens

Garden for the Environment	San Francisco, CA	Maggie Marks	https://www.gardenfortheenvironment.org/garden
The Farm & Kitchen at June Jordan School for Equity	San Francisco, CA		https://www.urbansprouts.org/jjse
Urban Adamah	Berkeley, CA	Adam Weisberg	https://urbanadamah.org/
UC Elkus Ranch Environmental Education Center	Half Moon Bay, CA	Amy Bono/abono@ucanr.edu	https://ucanr.edu/site/elkus-ranch-environmental-education-center

Native Plant Nurseries

GGNPC Presidio Nursery	San Francisco, CA	Annette Russel	https://www.parksconservancy.org/programs/npn/presidio-nursery
Candlestick Point Native Plant Nursery	San Francisco, CA	Patrick Rump	https://www.lejyouth.org/index.php/native-plant-nursery/
The Watershed Nursery	Richmond, CA	Diana Benner	https://www.watershednursery.com/

Other Sources

National Urban Agriculture Initiative	Briana Stevenson, National Urban Ag Coordinator	https://nuaginitiative.com/
Community Alliance with Family Farmers		https://caff.org/
The Ecological Farming Association (EcoFarm)		https://www.eco-farm.org/
Carbon Cycle Institute	Dr. Jeffrey Creque / jcreque@carboncycle.org	https://www.carboncycle.org/carbon-farm-planning/
Climate Positive Design		https://climatepositivedesign.org/
Berkeley Food Institute		https://food.berkeley.edu/
UC Agriculture and Natural Resources	bdhales@ucanr.edu	https://ucanr.edu/
SF ENV Bee Friendly Plant Nurseries		https://www.sfenvironment.org/bee-friendly-plant-nurseries
The EcoCenter at Heron's Head Park	ecocenterhhp@sfgov.org	https://sfrecpark.org/1226/The-EcoCenter-at-Herons-Head-Park
San Francisco Beekeepers Association	Mike Foti	https://www.sfbee.org/
Earth Island Institute	Abby Bell	https://www.earthisland.org/index.php/project/entry/friends-of-alemany-farm
UC Davis (College of Agricultural and Environmental Sciences)		
The Garden Project / Earth Stewards		https://www.gardenproject.org/
American Horticultural Therapy Association		https://www.ahta.org/

b. Preliminary list of Stakeholders and Technical Advisors for Outreach

Preliminary list of Stakeholders for Outreach

Name	Entity	Contact
	TIDA Board	
	TICD / TIDG	
	OneTI	
	RPD O&M	
	RPD Urban Agriculture	
	DPW O&M	
	DPW BUF	
	ENV	
Guillermo Vasquez	Indigenous Permaculture	
Sara Moncada	Association of Ramaytush Ohlone (ARO)	
	American Indian Cultural District	
	Job Corps	
	Life Learning Academy	
	SFUSD	
	Healthright360	
	YMCA	
	SF-Marín Food Bank	

Preliminary list of Technical Advisors for Outreach

Name	Entity	Contact
	San Francisco Food Security Taskforce	
	Friends of Alemany Farm	
	Hummingbird Farm (PODER)	
	Star Route Farms (USF)	
	Elkus Ranch Environmental Education Center (UC ANR)	
	Green Gulch Farm (SFZC)	
	Pie Ranch / Cascade Regenerator Program	
	TomKat Ranch Educational Foundation	
	Urban Adamah	
	National Urban Agriculture Initiative	
	Community Alliance with Family Farmers	
	The Cultural Conservancy / Heron Shadow	
	The Ecological Farming Association (EcoFarm)	
	Carbon Cycle Institute	
	Berkeley Food Institute	
	San Francisco Beekeepers Association	
	Earth Island Institute	
	San Francisco Urban Agriculture Alliance	
	Foodwise (formerly CUESA)	
	Community Grows	
	Urban Sprouts	
	San Francisco Parks Alliance	
	Golden Gate National Parks Conservancy	
	Literacy for Environmental Justice	

TREASURE ISLAND AND YERBA BUENA ISLAND DESIGN FOR DEVELOPMENT, 2024, PAGE 90.

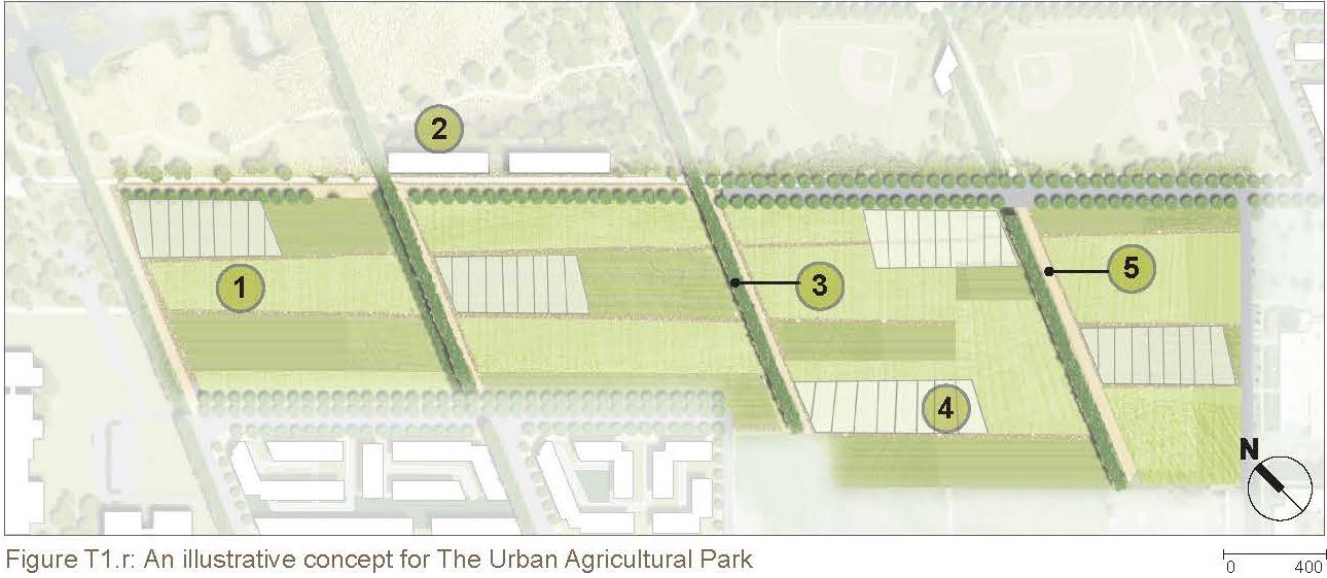
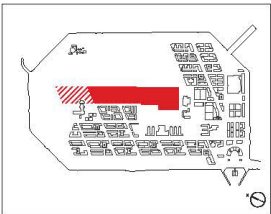


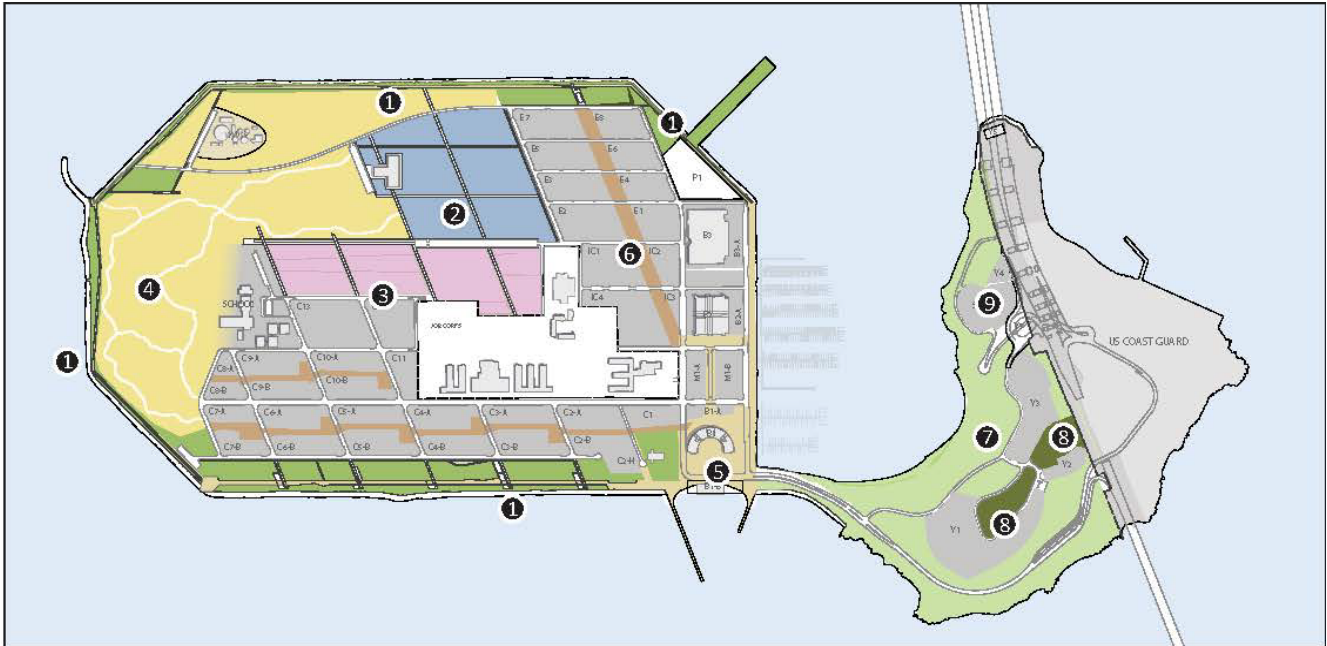
Figure T1.r: An illustrative concept for The Urban Agricultural Park



- 1. Pathways with Gathering Spaces
- 2. Composting Center and Maintenance Facility
- 3. Windrows
- 4. Greenhouse Facility
- 5. Pathways

NOTE: In the event of an expanded 40 acre Sport Park, displaced farm or Urban Agricultural Park land may occupy the hatched area at left.

TREASURE ISLAND AND YERBA BUENA ISLAND OPEN SPACE PLAN, 2011, PAGE 13.



TREASURE AND YERBA BUENA ISLAND PARK TYPOLOGY

- | | | |
|------------------------------|---|--|
| 1 SHORELINE PARK | 4 NORTHERN SHORELINE AND WILDS | 7 YERBA BUENA ISLAND HMP AREAS |
| 2 SPORTS AND RECREATION PARK | 5 URBAN CORE | 8 YERBA BUENA ISLAND HILLTOP PARK |
| 3 URBAN AGRICULTURAL PARK | 6 PEDESTRIAN NETWORK & NEIGHBORHOOD PARKS | 9 SENIOR OFFICERS QUARTERS HISTORIC DISTRICT |

TREASURE ISLAND AND YERBA BUENA ISLAND OPEN SPACE PLAN, 2011, PAGE 42.

Urban Agricultural Park

The Open Space Plan includes basic site improvements to prepare the site for farm operations, with the understanding that the Urban Agricultural Park will be managed and operated by a farm operator or non-profit organization.

The Urban Agricultural Park is intended to be a full production urban farm and/or nursery producing fresh produce or nursery stock for project planting and ongoing maintenance and restoration activities. The Agricultural Park will also provide opportunities for educational and recreational amenities. The park is intended to be pragmatic and utilitarian, allowing guests to experience the process of farming and/or nursery operations. The park shall be open and available to members of the community and will include community garden plots for Treasure Island and YBI residents. The park is intended to be designed with a sequence of walking paths and various areas for interpretation and demonstration, with benches and gathering areas between growing fields which allow visitors to appreciate the agricultural landscapes. Green houses, wind turbines and recycling and composting facilities are envisioned to support sustainable practices. Environmental or horticultural art could also be incorporated into the design.

PROGRAM & DESIGN CHECKLIST

(Items required by Design for Development Standards)

- A 20 - 25 acre organic agricultural farm.
- Farming practices to include small animal husbandry, various crop cultivation, aquaculture and orchards.
- Design and agricultural production shall be controlled so the operation does not create a negative impact on adjacent residential uses.
- Windrow trees shall be planted along the pedestrian pathways within the farm.

LANDSCAPE IMPROVEMENTS

(Items consistent with the Design for Development)

Paving

- Stabilized crushed stone paths for pedestrian pathways and vehicular access.
- Asphalt concrete or concrete paving in limited areas where required.

Grading and Drainage

- Rough grading and provision of storm drainage and treatment improvements.

Soil Preparation & Fine Grading

- Soil testing, organic soil amendments and/or import of 6 – 8 inches of topsoil.
- Coordination with 3rd Party operator to determine final soil preparation strategy.

Planting

- Windrow Trees
- Stormwater treatment areas as needed.

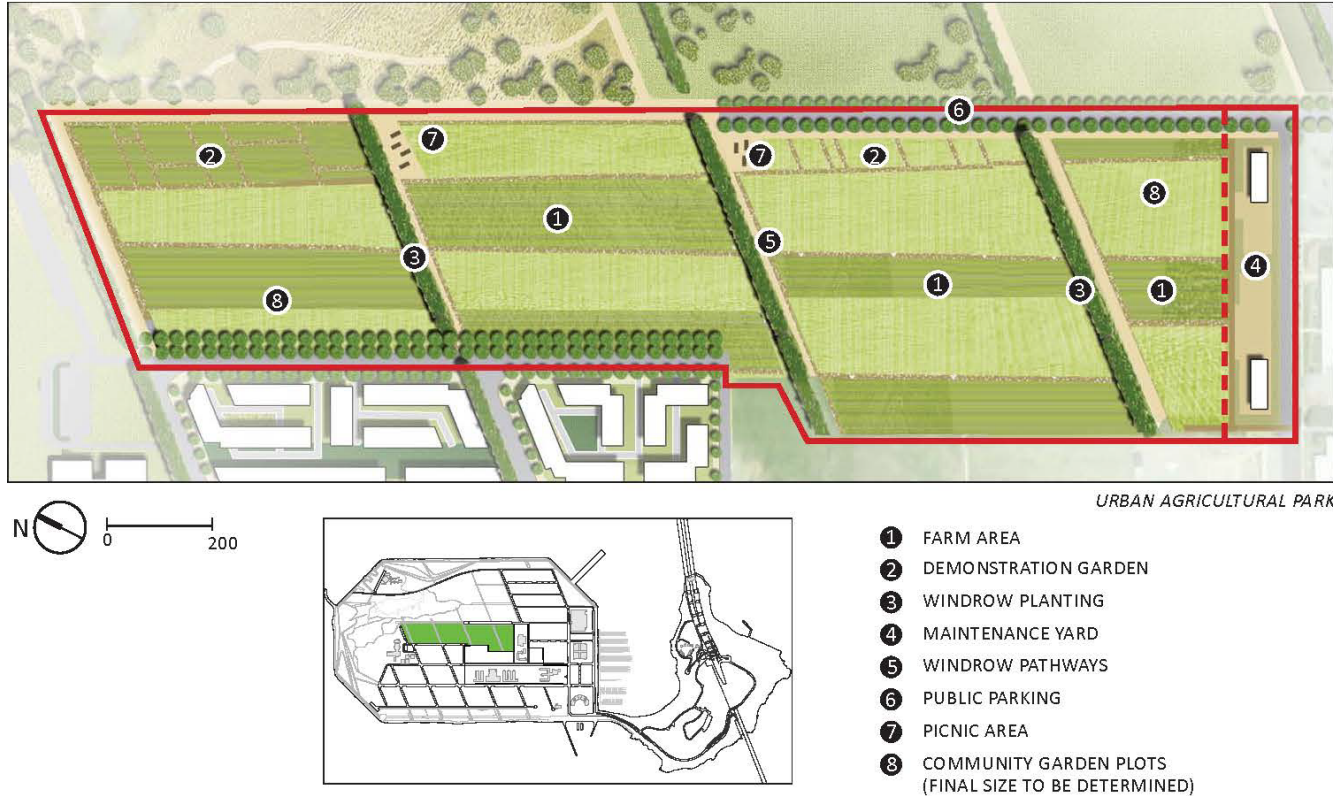
Irrigation

- Mainline and Gate valve for point of connection.

Special Features

- A demonstration educational garden, with interpretive signage.
- Group Picnic Area
- Community Garden Plots

TREASURE ISLAND AND YERBA BUENA ISLAND OPEN SPACE PLAN, 2011, PAGE 43.



Maintenance Yard and Facilities

A maintenance yard with operations and maintenance facilities for all open space shall be located in the Agricultural Park area and will include basic site improvements including utility service and facilities for maintenance. A recycling and composting facility will be incorporated within the maintenance yard area and provided as part of the community facilities program. TICA will continue to coordinate with TIDA and potential project partners to define the open space operations and maintenance requirements and facility needs, including size and layout.

PROGRAM & DESIGN CHECKLIST

(Items required by Design for Development Standards)

- A 1 acre maintenance yard (final size to be confirmed and coordinated)
- O&M Office
- Shop and Storage Facilities
- Space allocation for recycling and composting facilities

LANDSCAPE ELEMENTS

(Items consistent with the Design for Development)

Paving

- Gravel, asphalt, and/or concrete paving areas as needed.

Lighting

- General Area Lighting

Grading and Drainage

- Storm drainage and stormwater treatment improvements.

Open Space Facilities

- O & M Office Space (800 sf building including restroom facilities)
- Corporation Shop (approximately 5,000 sf)
- Storage Shed (approximately 5,000 sf)
- Perimeter fencing

Exhibit B

Project Partner Kick-off Meeting Presentation



TREASURE ISLAND URBAN AGRICULTURAL PARK

ALLISON N. ALBERICCI, AIA, AICP, LEED AP BD+C
TREASURE ISLAND DEVELOPMENT AUTHORITY | MAJOR SITES PRINCIPAL PLANNER



PROJECT KICK-OFF MEETING

TIDA | PLANNING | RPD | DPW | ENV | ONE TI | TIGD
29 JULY 2025



TREASURE ISLAND URBAN AGRICULTURAL PARK

PRESENTATION OUTLINE

- INTRODUCTIONS
- PROJECT CONTEXT
- PROJECT SCOPE
- PROCESS
- DISCUSSION



INTRODUCTIONS



San Francisco
Planning



PROJECT CONTEXT

TREASURE ISLAND PLANNING PROGRAM



PLANNING PROGRAM COMPONENTS



PARKS & OPEN SPACE PLANNING

- OVERALL PARKS AND OPEN SPACE AUDIT AND PROGRAMMING FOR INCLUSIVITY
- **URBAN AGRICULTURAL PARK IMPLEMENTATION PLAN**
- SPORTS PARK PROGRAMMING
- NORTHERN SHORELINE AND THE WILDS



COMMUNITY FACILITIES & RETAIL

- SFFD AND SFPD FACILITY PLANNING
- SCHOOL SITE PLANNING
- POTENTIAL: PUBLIC LIBRARY, COMMUNITY / RECREATION CENTER
- SERVICES AND AMENITIES NEEDED TO SUPPORT DAILY LIFE FOR A MIXED-INCOME ISLAND COMMUNITY



DEVELOPMENT CAPACITY

- JOB CORPS SITE INTEGRATION INTO DEVELOPMENT PROJECT
- OPPORTUNITY FOR ADDITIONAL HOUSING, COMMUNITY FACILITIES AND PUBLIC BENEFITS
- INTEGRATED TRANSIT AND TDM PLANNING IN COORDINATION WITH TIMMA

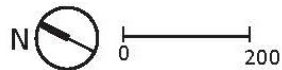


CONTEXT

The adopted Treasure Island and Yerba Buena Island Parks and Open Space Plan describes the basic components of a 20-25 acre organic *“full production urban farm and/or nursery producing fresh produce or nursery stock for project planting and ongoing maintenance and restoration activities...”* to *“...be managed and operated by a farm operator or non-profit organization”* (p. 42).



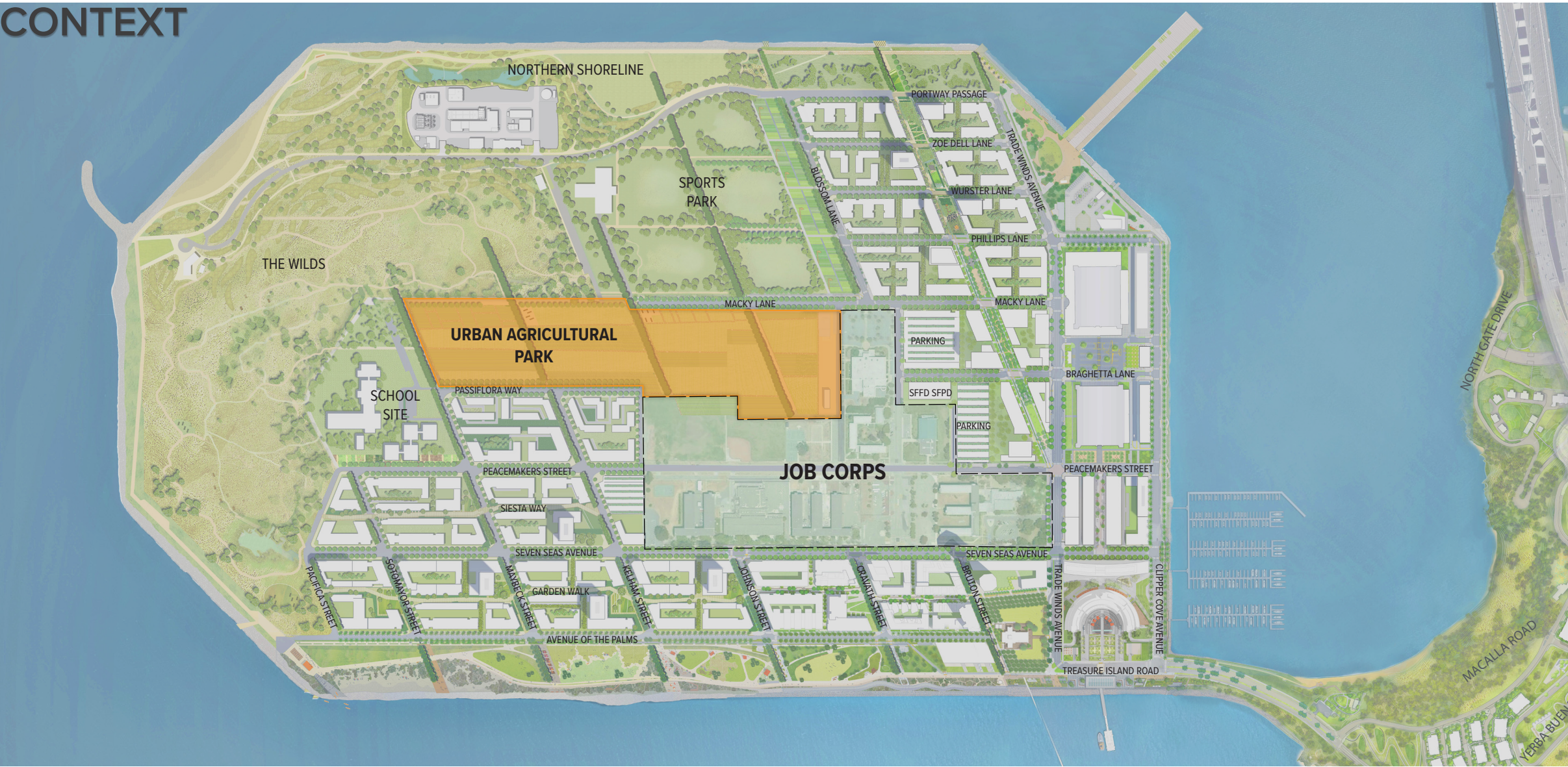
URBAN AGRICULTURAL PARK



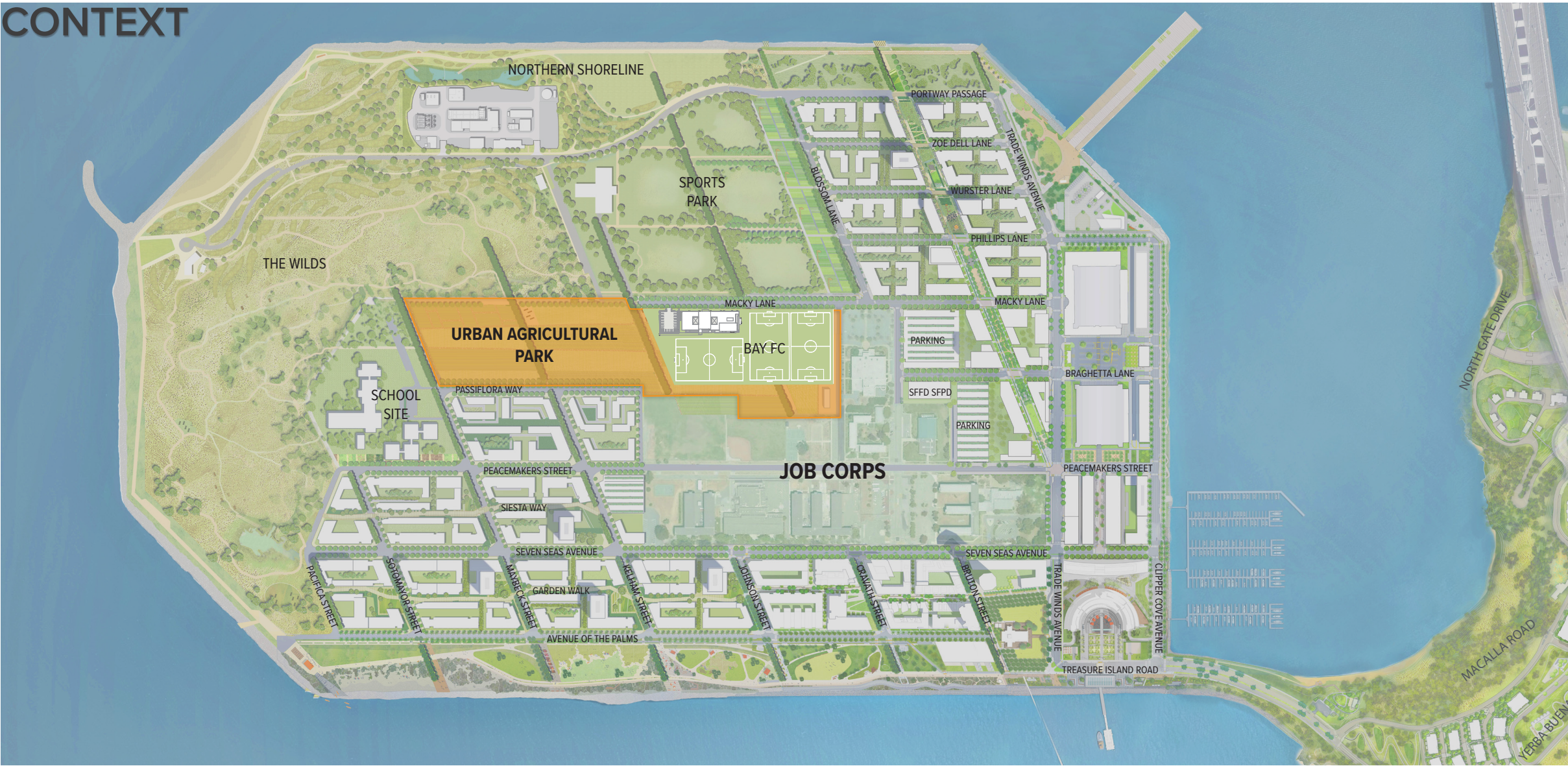
- ① FARM AREA
- ② DEMONSTRATION GARDEN
- ③ WINDROW PLANTING
- ④ MAINTENANCE YARD
- ⑤ WINDROW PATHWAYS
- ⑥ PUBLIC PARKING
- ⑦ PICNIC AREA
- ⑧ COMMUNITY GARDEN PLOTS (FINAL SIZE TO BE DETERMINED)



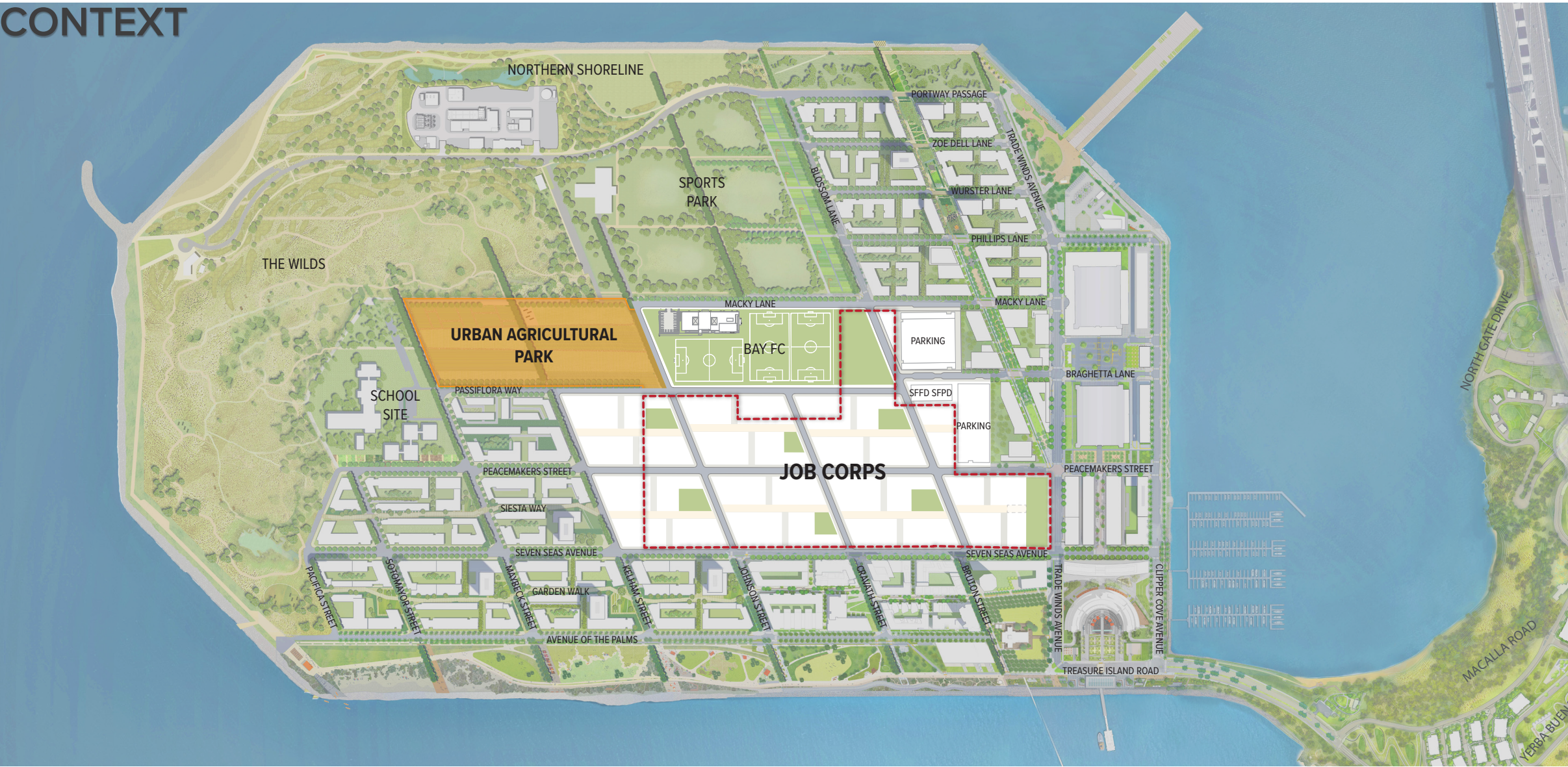
CONTEXT



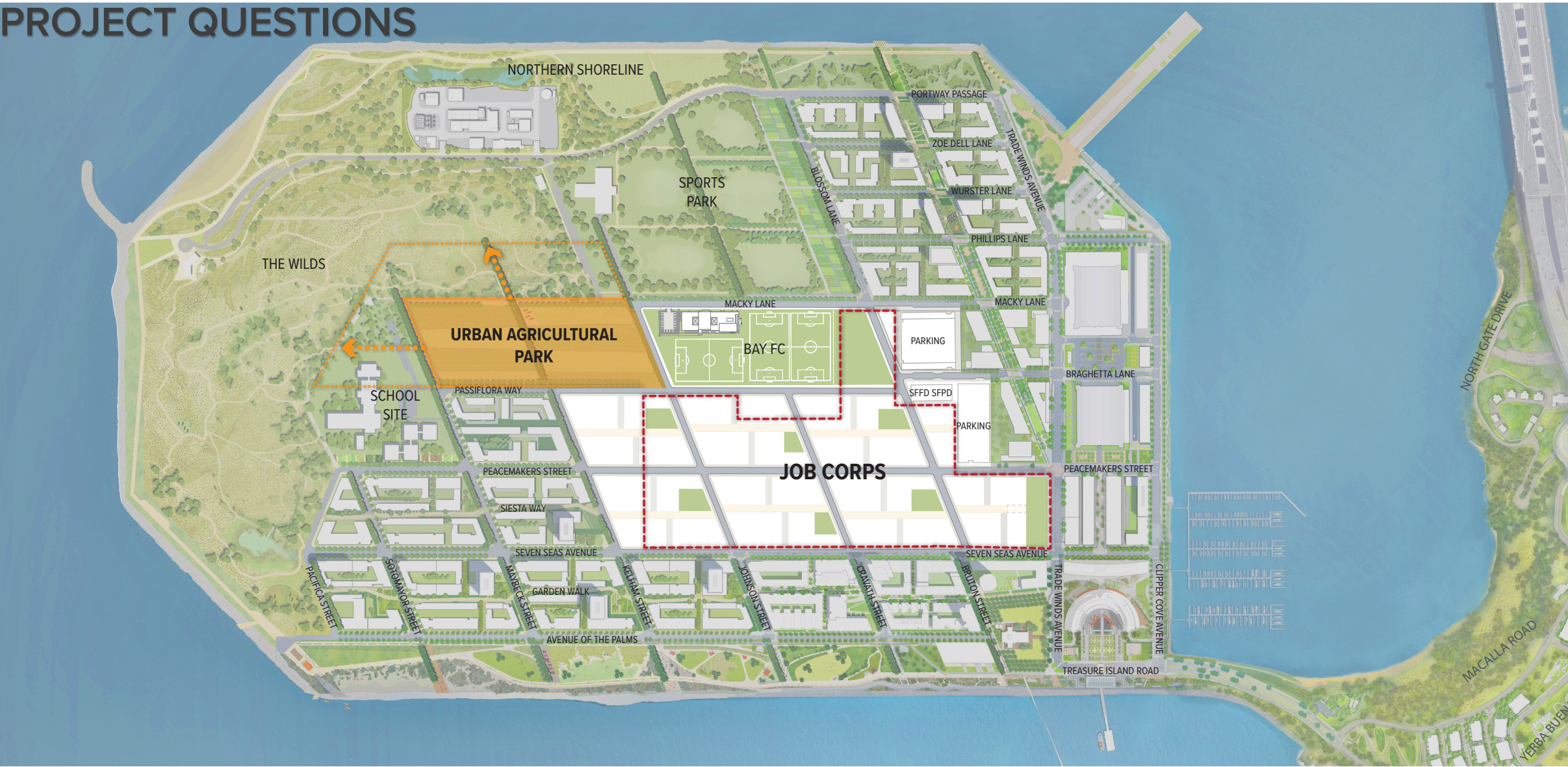
CONTEXT



CONTEXT



PROJECT QUESTIONS



PROJECT SCOPE

TASKS

THIS PROJECT WILL CREATE A PROGRAM, CONCEPTUAL DESIGN, AND IMPLEMENTATION PLAN FOR CONSIDERATION AND ENDORSEMENT BY THE TIDA BOARD OF DIRECTORS, AND SUBSEQUENT INTEGRATION INTO THE TI/YBI DEVELOPMENT.

- VISION AND PROGRAM
- CONCEPTUAL DESIGN
- OPERATIONAL MODELS
- FINANCING AND PHASING



TASKS

1. PROJECT START UP

- Set up Project Base Plans
- Refine Schedule and key dates
- Kick-off Meeting with Project Participants
- Develop Stakeholder Participation / Outreach Plan

Deliverables

- Kickoff Meeting Summary and Action Items
- Stakeholder and Technical Advisory Framework Memo
- Schedule for Stakeholder and Technical Advisory Input

4. VISIONING

- From the results and input gathered during Task 3. Initial Outreach, establish a shared vision for the Urban Agricultural Park among potential stakeholders and other users.
- Establish principles to guide UAP development, implementation, operations, and maintenance.

Deliverables

- Vision Statement for the Urban Agricultural Park
- Guiding Principles

2. RESEARCH

- Urban Agriculture Precedents and Best Practices
- RPD Urban Agriculture sites in San Francisco
- Survey of Urban Agriculture non-profits
- Regulatory conditions, requirements and restrictions
- Crops and Growing Seasons, Thresholds, potential yields.

Deliverables

- Existing and Planned Conditions Analysis
- Opportunities and Constraints Analysis
- Precedents and Best Practices Research Memo

5. PROGRAMMING

- Expand on the program contained in the TI/YBI Parks and Open Space Plan, and the Arts Masterplan.
- From the Stakeholder and Technical Advisor input, detail the program elements to be accommodated within the UAP, the quantity of space for each element (minimum required / recommended), and any critical adjacencies.

Deliverables

- Draft Program Matrix
- Program Narrative with Critical Adjacencies Diagram

3. INITIAL OUTREACH

- Focused outreach to Potential Stakeholders – Consult
- Solicit input from Technical Advisors – Advise
- Gauge interest for further feedback

Deliverables

- Outreach Log / Contact List
- Stakeholder Interview / Questionnaire Summary Memo
- Technical Advisor Interview / Questionnaire Summary Memo
- Presentation of key Recommendations

6. ALTERNATIVES DEVELOPMENT

- Design Workshop to develop concept design ideas
- Create 2-3 Alternative Concept Plans
- Assess each alternative
- Gather feedback from Stakeholders and Technical Advisors

Deliverables

- 2-3 Concept Plan Alternatives
- Comparative Evaluation of Alternatives
- Summary of Stakeholder and Technical Advisor feedback



TASKS

7. PREFERRED ALTERNATIVE SYNTHESIS

- Synthesize feedback into a preferred conceptual plan
- Assess any implications for integration into future TI/YBI Plan Amendments, as needed

Deliverables

- Preferred Concept Plan (illustrative plan + narrative)
- Summary of amendments to TI/YBI Plan (if applicable)

10. CONSTRUCTION PHASING AND TIMING

- Treasure Island Development Construction Phasing coordination
- Construction sequencing for UAP, including expansion options

Deliverables

- UAP Construction Phasing Plan, including early implementation / pilot project opportunities.
- TI Development Coordination Memo

8. OPERATIONS AND MAINTENANCE PLAN

- Operational Models and potential operators
- How should TIDA/CCSF determine the operator(s)?

Deliverables

- Operations Scenarios and Roles Memo
- Draft Operator(s) Selection Framework
- Draft Outline for Operations Plan to be created by future Operator(s)

11. NEXT STEPS

- Identify Implementation steps, roles and responsibilities
- Identify necessary approvals and timelines to secure (Board, Planning, State Lands, SFBR-WQCB, Others?)

Deliverables

- Summary of Implementation Responsibilities and Timelines
- Approvals Checklist and Environmental Review Needs Memo (if applicable)
- Draft Recommendations for TIDA Board consideration

9. COST ESTIMATE AND FUNDING

- Order-of-magnitude cost of construction for build-out
- Evaluate DDA obligations and determine gaps, if any
- Identify funding sources for initial cost of construction.
- Operations and maintenance budget and funding
- Establish prioritization and detail capital planning process

Deliverables

- Preliminary Capital Cost Estimate
- Operating Budget Framework
- Potential Funding Sources Matrix

12. FINAL REPORT AND PRESENTATIONS







- Final Presentation to the TIDA Board of Directors
- Presentation Boards at Community Forum

Deliverables

- Staff Memo to TIDA Board
- Final Implementation Plan Presentation Materials
- Final Implementation Plan Report



SCHEDULE OVERVIEW

TASK	JUL	AUG	SEPT	OCT	NOV	DEC	JAN	FEB	MAR	APR	MAY	JUN	JUL
1. Project Startup	 Project Partner Kickoff Meeting (7/29)												
2. Research		 TIDA HITS Presentation (9/5)											
3. Initial Outreach													
4. Visioning													
5. Programming					 On-Island TIDA Board Pre-meeting Poster Session (11/19)								
6. Alternatives Development													
7. Preferred Alternatives Synthesis							 TIDA HITS Presentation (2/6)						
8. Operations and Maintenance													
9. Cost Estimating and Funding													
10. Construction Phasing													
11. Next Steps and Responsibilities													
12. Final Report and Presentation											 On-Island Transition Talk Poster Session (TBD)	 TIDA Board Final Presentation (7/8)	
WE ARE HERE													



PROCESS

OUTREACH APPROACH

THE OUTREACH APPROACH WILL BE A FOCUSED AND COLLABORATIVE PROCESS THAT GATHERS INPUT FROM ISLAND LEADERS, EXPERTS, AND CITY STAFF TO SHAPE A SHARED VISION FOR THE FARM.

WE WILL AIM TO LIFT UP:

- LOCAL KNOWLEDGE AND CULTURAL PRACTICES
- EQUITY, FOOD JUSTICE, AND SUSTAINABILITY PRINCIPLES
- VISIONS THAT REFLECT ISLAND'S NEEDS AND HISTORY



WHO'S INVOLVED AND HOW

PARTNERS



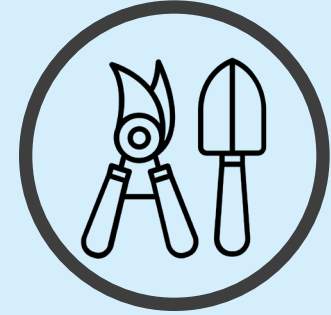
REPRESENTATIVES FROM ONE TREASURE ISLAND, TIDA, CITY PLANNING AND OTHER KEY CITY AGENCIES

STAKEHOLDERS



ON-ISLAND GREEN LEADERS AND COMMUNITY GROUPS FOCUSED ON FOOD SECURITY, YOUTH, RECREATION, AND SUSTAINABILITY

TECHNICAL ADVISORS



AGRICULTURAL EXPERTS, ECOLOGISTS, FARM OPERATORS AND POTENTIAL FUTURE PARTNERS.



MULTIPLE ROLES

PARTNERS



REPRESENTATIVES FROM ONE TREASURE ISLAND, TIDA, CITY PLANNING AND OTHER KEY CITY AGENCIES

CONTRIBUTIONS

- Refine scope and deliverables
- Provide feedback at key milestones
- Provide needs and priorities for use
- Offer specialized knowledge to inform implementation efforts

STAKEHOLDERS

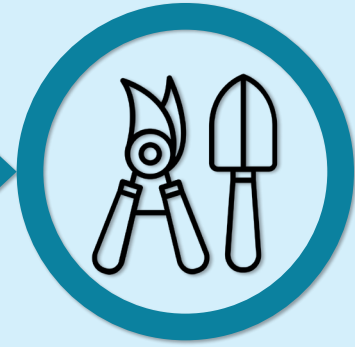


ON-ISLAND GREEN LEADERS AND COMMUNITY GROUPS FOCUSED ON FOOD SECURITY, YOUTH, RECREATION, AND SUSTAINABILITY

CONTRIBUTIONS

- Share needs and priorities for use
- Shape the vision and programming
- Respond to program alternatives and designs
- Identify opportunities and potential partners

TECHNICAL ADVISORS



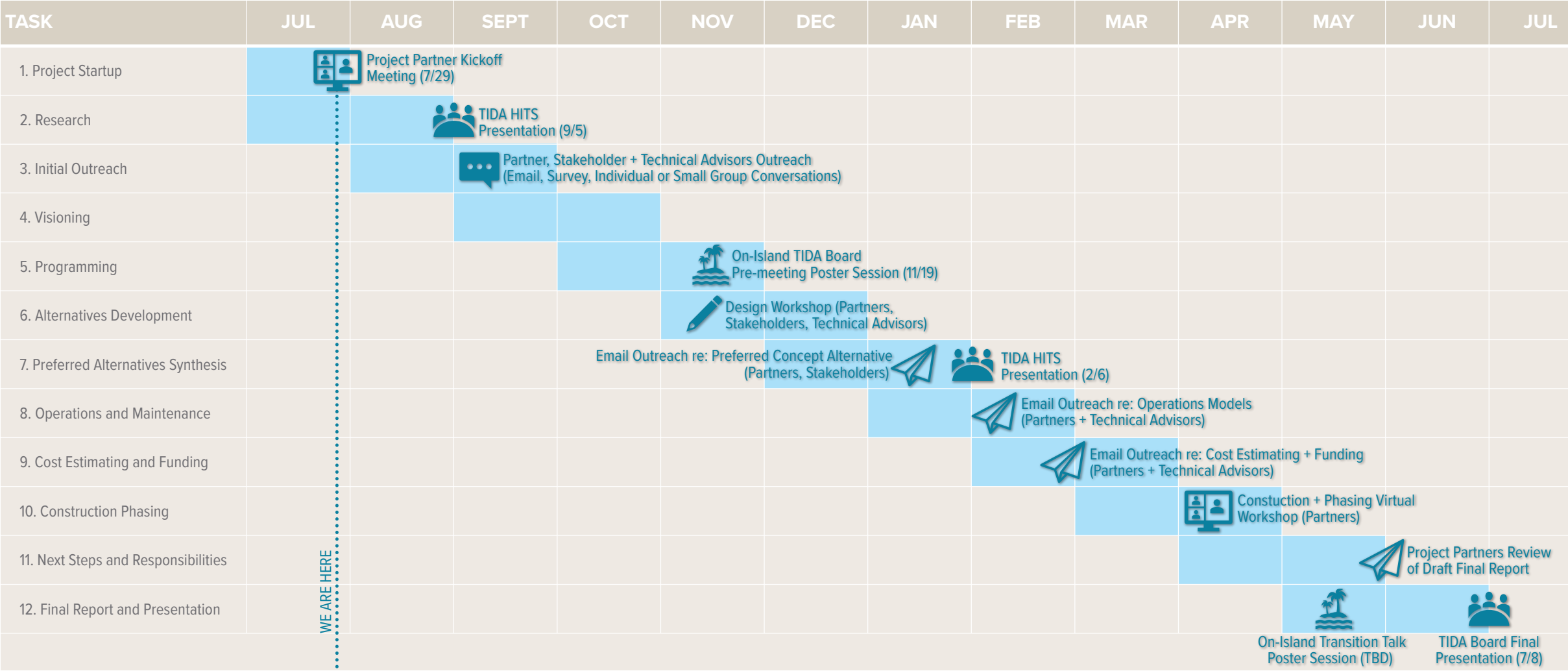
AGRICULTURAL EXPERTS, ECOLOGISTS, FARM OPERATORS AND POTENTIAL FUTURE PARTNERS.

CONTRIBUTIONS

- Provide input on yields, operations, maintenance, cost estimating and funding
- Share best practices and lessons learned
- Advise on feasibility and possible long term stewardship or operators.



SCHEDULE DETAIL



DISCUSSION QUESTIONS

ANY THOUGHTS?

- WHO ARE THE BEST POINTS OF CONTACT FROM EACH PARTNER ENTITY TO ANSWER THE PROJECT QUESTIONS?
- ARE WE REACHING OUT TO THE RIGHT PEOPLE AT THE OPTIMAL MOMENTS IN TIME?
- WHO ELSE SHOULD WE BE TALKING TO?
- ARE THERE ADDITIONAL PRECEDENTS WE SHOULD STUDY?
- OTHER QUESTIONS AND COMMENTS?



THANK YOU!



CONTACT

Allison N. Albericci, AIA, AICP, LEED AP BD+C

Treasure Island Development Authority | Major Sites Principal Planner

allison.albericci@sfgov.org



Exhibit C

Outreach / Engagement Memo



TREASURE ISLAND DEVELOPMENT AUTHORITY

39 TREASURE ISLAND ROAD, SUITE 241

SAN FRANCISCO, CA 94130

MAIN (415) 274-0660 | FAX (415) 274-0299

WWW.SFTREASUREISLAND.ORG



TREASURE ISLAND URBAN AGRICULTURAL PARK IMPLEMENTATION PLAN OUTREACH / ENGAGEMENT MEMO

FINAL: September 4, 2025

TIDA Contact: Allison Albericci, Major Sites Principal Planner
628.652.1315 | allison.albericci@sfgov.org

Purpose: The project will create a program, conceptual design, and implementation plan for the Treasure Island Urban Agricultural Park (UAP), for consideration and endorsement by the TIDA Board of Directors, and subsequent integration into the TI/YBI Development. This memo summarizes the targeted outreach approach to engage Project Partners, Stakeholders, Technical Advisors, the TIDA Board and the Community throughout the process to produce an actionable plan that reflects shared values and offers clear, practical steps toward realization of this important resource.

Project Overview

The Treasure Island Urban Agricultural Park Implementation Plan will create a program, conceptual design, and implementation framework for an agricultural park/ urban farm on Treasure Island. The project will explore feasible agricultural uses, identify user groups, determine the operational model, and outline implementation steps in alignment with the Treasure Island Development Agreement and Area Plan. The UAP is envisioned as a community-serving, productive, and ecologically beneficial public space supporting food security, education, community-building, and stewardship.

Background

The UAP is an approved element of the 2011 Treasure Island/Yerba Buena Island Development Plan and Parks and Open Space Plan. However, detailed implementation strategies were not defined in prior project documents. This effort seeks to fill that gap with a detailed and community-informed plan. The island's unique geographic location, evolving residential base, and mix of stakeholders (including a large affordable housing population) require thoughtful engagement strategies that reflect the island's history, demographics, and equity goals.

Outreach Approach

The targeted outreach approach for this project supports the full planning process, from visioning through conceptual and into implementation design. Each phase will be informed by a combination of research, direct engagement, and feedback loops to ensure the work is grounded in local priorities and lived experience. The goal is to produce a well-rounded, actionable plan that reflects shared values and offers clear, practical steps toward realization of this critical open space resource.

Three key groups are participating in the planning process: project partners, stakeholders, and technical advisors. Each brings a distinct and valuable perspective, from on-the-ground knowledge to policy, operations, and implementation expertise, helping to ensure that input is well-rounded and responsive to community needs. While we've grouped participants into these three categories, many individuals wear multiple hats; for example, a partner from the city family may also contribute technical expertise. Generally, partners such as One Treasure Island, TIDA, and City agencies help guide the scope and review key milestones. Stakeholders, particularly on-island leaders, play a central role in shaping the vision, program and assessing conceptual design alternatives. Technical advisors, including agricultural experts and potential operators, will help evaluate feasibility, inform funding strategies, implementation, and support long-term stewardship.

Engagement Groups

Project Partners

The **Project Partners** will be composed of representatives from One Treasure Island, TIDA, and relevant City agencies involved in the implementation of parks, open space, public facilities, environmental policy, and community-serving programs. This team will provide overall guidance for the planning process, helping to refine the scope, coordinate interagency input, and ensure alignment with City goals, community priorities, implementation, and long-term sustainable operations. The Project Team will review key deliverables throughout the process.

Stakeholders

Stakeholders include current and prospective urban agriculture practitioners, on island community-based organizations and others with an interest in food access, youth development, sustainability, and community programming. Stakeholders will help shape the vision, provide insight into program needs, and review conceptual design alternatives.

Technical Advisors

The **Technical Advisors** will consist of subject matter experts, current urban farm operators and other implementation partners who will provide guidance on farm planning, infrastructure, regulatory requirements, operations, funding and long-term feasibility. Their input ensures the plan aligns with regulatory and technical standards, is implementable, and fiscally sustainable.

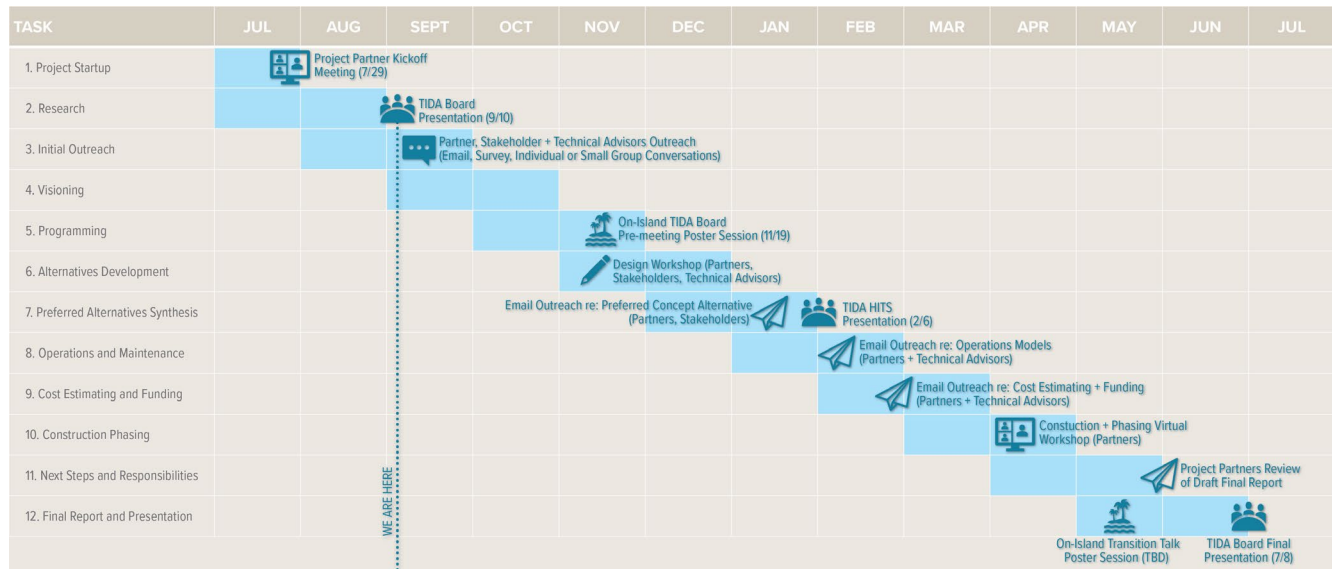
The **TIDA Board** will be consulted at regular intervals during the project. In addition, the on-Island Public Hearings, poster sessions, and a potential Transition Talk provide opportunities for **residents** and the broader **community** to learn about the project and give feedback.

Engagement Techniques and Timeline

Group	Involvement	Purpose	Format
Project Partners	Co-create	Partner on key decisions, including development of alternatives and the identification of the preferred solution.	<ul style="list-style-type: none">▪ Kick-off Large Group Meeting▪ Emails and Surveys▪ Small Group or One-on One Meetings to follow up on survey/email results▪ Design Workshop
Stakeholders	Collaborate	Solicit input from key community organizations to identify vision and programming needs	<ul style="list-style-type: none">▪ Project Intro/Ask Email▪ Emails and Surveys▪ Small Group or One-on One Meetings to follow up on survey/email results▪ Design Workshop

Technical Advisors	Consult	Solicit expert guidance on best practices	<ul style="list-style-type: none"> Project Intro/Ask Email Emails and Surveys Site Visit(s) Small Group or One-on One Meetings to follow up on survey/email results Design Workshop (if available)
TIDA Board	Advise and Inform	Share outcomes and summaries of findings. Solicit additional feedback. Guide project implementation.	<ul style="list-style-type: none"> HITS Committee Meetings Board Hearings
General Public	Inform	Share outcomes and summaries of findings. Solicit input.	<ul style="list-style-type: none"> HITS Committee Meetings Board Hearings Transition Talk (TBD)

Proposed Schedule



Schedule Details

Task	Commence	Complete
1. Project Startup	7/1/2025	7/31/2025
Project Partner Kick Off Meeting		7/29/2025
2. Preliminary Research	8/1/2025	9/15/2025
Site Tour of Sunol AgPark		8/27/2025
3. Initial Outreach	8/1/2025	9/30/2025
TIDA Board Hearing Informational Presentation		9/10/2025
Stakeholder and Technical Advisors Outreach (survey / small group meetings)		9/30/2025

4. Visioning	9/1/2025	10/31/2025
5. Programming	10/1/2025	11/30/2025
On-Island TIDA Board Hearing and Poster Session		11/19/2025
6. Alternatives Development	11/1/2025	12/31/2025
Design Workshop (Project Partners, Stakeholders, available Technical Advisors)		Mid-Nov.
7. Preferred Alternative Synthesis	12/1/2025	1/31/2026
Project Team + Stakeholders to give input on preferred alternative (survey / small group meetings / etc.)	1/1/2026	2/6/2026
TIDA HITS Committee Informational Presentation		2/6/2026
8. Operations and Maintenance	1/1/2026	2/28/2026
9. Cost Estimating and Funding	2/1/2026	3/31/2026
Project Partners and Technical Advisors to give input via email		
10. Construction Phasing and Pilot Projects	3/1/2026	4/30/2026
Project Partners and Technical Advisors virtual workshop		
11. Next Steps and Responsibilities	4/1/2026	5/31/2026
12. Final Report and Presentation	5/1/2026	6/30/2026
Transition Talk		TBD
TIDA Board Hearing Final Presentation		7/8/2026

Frequently Asked Questions:

What is the Urban Agricultural Park Project?

This is a planning project to explore building a new urban farm on Treasure Island. That means the details are still being worked out, and nothing has been built yet. We're in the early stages of asking questions, getting ideas, and working directly with stakeholders about what the farm could be.

The goal is to create a public space where people can grow food, learn about gardening and nature, and spend time outdoors. It's meant to support the community in many ways, by improving food access, offering education and job opportunities, and making the island more sustainable and resilient.

If the plan moves forward, the farm could include things like:

- Individual Plots for residents
- Small scale production farms
- A native plant nursery to support open space maintenance and natural resource conservation efforts on TI/YBI
- An educational garden
- A farm stand and/or farmer's market
- Classes and workshops for youth and adults
- Events and gathering spaces
- Areas to learn about healthy eating and taking care of the environment

The Treasure Island Urban Agricultural Park will provide island residents and visitors with access to sustainable and regionally appropriate agricultural practices. The UAP is envisioned as a community-serving, productive, and ecologically beneficial public space supporting food security, education, community-building, and stewardship.

Who is involved in the UAP Project?

Treasure Island Development Authority (TIDA) is leading the conceptual design and programming for the Urban Agricultural Park (UAP). As part of the design and programming process TIDA will work with community partners to provide TIDA with information on what the Treasure Island community want included in the UAP. These partners include entities such as One TI, TIDC, TI Job Corps, Indigenous Permaculture and others. TIDA will also work with city partner agencies and other stakeholders to provide TIDA with information on what the park will need to operate successfully. This stakeholder group includes entities such as SF Recreation & Parks Department, SF Department of Public Works, SF Environment Department, and others. Additional partners and stakeholders may be identified and their feedback and expertise incorporated into the implementation plan as part of the outreach process. Treasure Island Community Development (TICD) will prepare the land for the park as outlined in the developer's obligations in the Treasure and Yerba Buena Island Parks and Open Space Plan. Potential additional construction and site preparation needed to support the program will be identified as part of the implementation plan process and recommendations for the mechanisms to perform that work will be included in the final plan. Park operations, maintenance and programming could be the responsibility of several organizations and/or departments, possible organizational structures will be identified as part of the implementation plan process and recommendations made in the final plan.

When will the UAP be built?

The Urban Agricultural Park (UAP) is currently planned to be constructed as part of Major Phase 3 and/or Major Phase 4 development. Major Phase 3 development is anticipated to begin in 2030 with completion of Major Phase 4 to wrap up by 2045. These schedules are estimates and may be updated based on the timing of other development phases and projects. As part of the implementation plan process the team will assess opportunities to provide interim or support existing agricultural programming in the time between the completion of this plan and final buildout. These recommendations can provide opportunities for island and regional community members to access elements of the final vision of the plan while development is ongoing.

How can I learn more?

As the TIDA team develops the plan for the park there will be several opportunities for residents to get updates about how the plan is progressing. The next opportunity for residents to learn more is at the On-Island TIDA board meeting on November 19th 2025. Residents can also direct questions to the TIDA team using the general TIDA email address at TIDA@sfgov.org or the general TIDA phone line at (415) 274-0660.