



PAUNAWA NG NAKAPLANONG PAGHINTO NG SERBISYO NG KURYENTE

Petsa: _____

Oras: _____

Ang mga apektadong Pasilidad ng Treasure Island ay kabilang ang:

Ang Mga Tauhan ng Mataas na Boltahe ng San Francisco Public Utilities Commission (SFPUC) ay dapat gumawa ng kailangang mga pagkukumpuni upang masiguro ang maaasahang serbisyo sa lahat ng parokiyano. Upang ligtas na magawa ang trabahong ito, kailangan ng mga tauhan na pansamantalang ihinto ang iyong serbisyo ng kuryente. Gagawin ng mga tauhan ang makakaya upang paliitin hanggang maaari ang haba ng paghinto ng serbisyo.

Kung ikaw ay isang Nagpapaupa na may (mga) umuupa sa mga lugar na nakalista sa itaas at sinisingil ka ng SFPUC sa iyong pangalan, **responsibilidad mo** na bigyan ng paunawa ang (mga) umuupa ng tungkol sa nakaplanong paghinto ng serbisyo.

Ang di-ligtas na mga kondisyon ng panahon o anumang di-inaasahang emerhensiya ay magtutulak sa mga Tauhan ng Mataas na Boltahe na kanselahin ang trabaho sa huling minuto at hindi magagawa ng mga tauhan na bigyan ka ng paunawa ng pagkanselang ito. Gayunman, tatanggap ka ng paunawa ng binagong petsa at oras.

BABALANG PANGKALIGTASAN: Ang mga residente ay hindi dapat gumamit ng mga generator sa ilalim ng anumang pangyayari nang hindi nalalaman ng tagapagkaloob ng Pabahay. Kung ikaw ay gagamit ng generator sa panahon ng paghinto ng serbisyo dapat mong ihiwalay ang iyong generator mula sa sistema ng SFPUC. Ang kabiguang gawin ito ay hindi lamang makakapinsala sa iyong generator kundi maaari ring maging dahilan ng seryosong pinsala sa mga tauhan ng kuryente. Humihingi ng paumanhin ang SFPUC para sa abalang ito at nagpapasalamat sa iyong pang-unawa.

Kung ikaw ay umaasa sa mga kagamitang sumusuporta sa buhay, mangyaring isaalang-alang ang mga sumusunod:

HUMANAP NG PANGHALILING TIRAHAN SA ISANG LOKASYON NA HINDI APEKTADO NG PAGHINTO.

- **Ang mga computer at ibang elektronikong kagamitan** ay partikular na sensitibo sa paghinto ng serbisyo ng kuryente. Malakas na inirerekomenda namin ang paghugot sa kagamitang ito mula sa saksakan bago ang panahon ng paghinto.
- **Ang mga sistemang panseguridad, orasan, pantakda ng oras ng patubig,** at katulad na kagamitan ay malamang na mangailangan ng muling pagbabalik sa kaayusan pagkakumpleto ng paghinto.

Para sa impormasyon tungkol sa kung paano dapat **pangalagaan ang mga nasisirang pagkain** sa iyong refrigerator o freezer, bisitahin ang website www.foodsafety.gov/blog/power_outages.html



NOTICE OF PLANNED ELECTRIC SERVICE INTERRUPTION

Date: _____

Time: _____

Affected Areas of Treasure Island Facilities include:

The San Francisco Public Utilities Commission (SFPUC) High Voltage Crew needs to make necessary repairs to ensure reliable service to all customers. In order to perform this work safely, the crew needs to temporarily interrupt your electric service. The crew will do its best to minimize the length of the service interruption.

If you are a Landlord with tenant(s) in the areas listed above and the SFPUC bill is in your name, **it is your responsibility** to notify the tenant(s) of the planned service interruption.

Unsafe weather conditions or any unforeseen emergency will require the High Voltage Crew to cancel the work at the last minute and the crew will be unable to notify you of this cancellation. However, you will receive notification of the rescheduled date and time.

SAFETY WARNING: Residents should not use generators under any circumstances without the knowledge of the Housing provider. If you use a generator during the service interruption you must isolate your generator from the SFPUC system. Failure to do so will not only damage your generator but can cause serious injury to electric crew personnel. The SFPUC apologizes for this inconvenience and thanks you for your patience.

If you rely **on life support devices**, please consider the following:

FIND ALTERNATE LODGING AT A LOCATION NOT AFFECTED BY THE INTERRUPTION.

- **Computers and other electronic equipment** are particularly sensitive to power interruption. We highly recommend unplugging this equipment before the shutdown period.
- **Security systems, clocks, irrigation timers,** and similar equipment will likely require resetting after the shutdown is completed.

For information about how to **safeguard perishable foods** in your refrigerator or freezer, visit the website www.foodsafety.gov/blog/power_outages.html



AVISO DE INTERRUPCIÓN PROGRAMADA DE SERVICIO ELÉCTRICO

Fecha: _____

Hora: _____

Las Áreas Afectadas de la Instalación de Treasure Island incluyen:

El Equipo de Obreros de Alto Voltaje de la Comisión de Utilidades Públicas de San Francisco (SFPUC por sus siglas en inglés) necesita hacer reparaciones para asegurar un servicio fiable para todos sus clientes. Para realizar estas obras de manera segura, el equipo necesita interrumpir temporalmente su servicio eléctrico. El equipo se esforzará para mantener la interrupción de servicio a un mínimo.

Si usted es un propietario con inquilino(s) dentro de las áreas listadas anteriormente y la factura de la SFPUC está a su nombre, **es su responsabilidad** notificar a cada inquilino de esta interrupción programada de servicio.

Condiciones climáticas o cualquier otra emergencia imprevista requerirá que el equipo de obreros de Alto Voltaje cancele las obras a último momento y el equipo no será capaz de avisarle de dicha cancelación. Sin embargo usted recibirá una notificación sobre la fecha y horario de la reprogramación de las obras.

AVISO DE SEGURIDAD: Los residentes no deberán usar generadores bajo ninguna circunstancia sin el conocimiento del propietario. Si usted usa un generador durante la interrupción de servicio, debe aislar su generador del sistema de la SFPUC. De no hacerlo, no solo dañará su generador si no que puede causar heridas graves al personal del equipo eléctrico. La SFPUC le pide disculpas por estas molestias y le agradece de antemano por su paciencia.

Si usted depende de algún **dispositivo de soporte de vida**, por favor considere lo siguiente:

ENTRE VIVIENDA ALTERNATIVA EN UNA UBICACIÓN NO AFECTADA POR LA INTERRUPCIÓN.

- **Las computadoras y otro equipo electrónico son particularmente sensibles a la interrupción de energía.** Le recomendamos sumamente que desconecte este equipo antes del período de interrupción.
- **Los sistemas de Seguridad, relojes, cronómetros de riego, y otros equipos similares seguramente requerirán reprogramación después que termine la interrupción.**

Para información sobre como **resguardar alimentos perecederos** dentro de su refrigerador o congelador, visite la página Web **www.foodsafety.gov/blog/power_outages.html**



暫停計劃供電服務通知

日期: _____

時間: _____

金銀島設施受影響地區包括：

三藩市水利局（SFPUC）高壓機組人員需要做必要的維修，以確保為所有顧客提供可靠的服務。為安全執行此項工作，機組人員需要暫時停止你的電力服務。工作人員會儘力將暫停此服務的時 間減至最少。

如你是房東，有住客住在上述的地區而三藩市水利局的帳單是以你的名字發出，**你有責任**通知住客計劃暫停此服務之事宜。

如天氣情況不安全或有任何未能預料到之緊急情況，高壓機組人員可能在最後一分鐘取消此工作，而他們將無法通知你此取消行動。但是，你將會收到重新安排時間和日期的通知。

安全警告：在任何情況下未經屋主知曉前，住客不應使用發電器。如果你在服務暫停的時間使用發電器，你必須將你的發電器和三藩市水利局的系統分開。如沒有這樣做你不只可損壞你的發電器同時可導致電力組工作人員嚴重受傷。三藩市水利局對此造成之不便謹以致歉，並感謝你的耐心。

如果你**依賴維生儀器**，請考慮以下方法：

在暫停供電之前在另一個地點找住宿

- **電腦和其他電子儀器**對電力中斷特別敏感。我們極力建議你在關閉期間將這些設備的電掣除出。
- **保安系統，鐘，灌溉計時器**和類似的設備可能需要在暫停供電結束之後重新設定。

有關如何保持你冰箱或冷藏庫易腐食物的安全，請上網：**www.foodsafety.gov/blog/power_outages.html**

HOT JOBS ALERT



JOBS AVAILABLE

- Toolworks - Janitorial Training
- TouchStone Golf - Greenskeeper, Hospitality sector
- Waste Experts- Drivers and Asst Drivers
- Bi-Rite various positions
- Aracely- Multiple hospitality positions
- Ferry Building-Sales Associate
- Ilta Foods- Warehouse and Drivers
- Job Corps- Security Position (NO guard card needed)
- TC Rentals ~Seasonal Work

Job Pay Range \$18 and Up

CONTACT OUR EMPLOYMENT SPECIALIST

If you have any questions, please call
Jessica Muniz at 415-426-6908
or email jmuniz@onetreasureisland.org



Treasure Island Community Development (TICD) VERTICAL CONSTRUCTION ADVISORY

Treasure Island Parcel C2.4 Start of Vertical Construction And Pile Driving on July 11, 2022

Vertical Developer for Parcel C2.4 on Treasure Island and its contractors will commence building construction and driving piles for foundation on its site. Please see below for the location for Parcel C2.4. The pile driving portion of the construction is expected to be completed by the middle of August, 2022. The Island community can expect the following:

Dates/Time of Work:

- Starting on July 11, 2022, between 7:00 AM and 4:00 PM, Monday to Friday.

Nature of Work and Traffic Impacts:

- Vertical building construction
- There are no regular impacts to on-Island streets, MUNI 25 stops or the MUNI 25 route associated with start of work at the Parcel C2.4 site.



TICD Construction Hotline (888) 469-0797

Please call the TICD Construction Hotline with any questions or concerns related to construction activities associated with the redevelopment of Treasure Island and Yerba Buena Island.

sftreasureisland.org/construction

Treasure Island Community Development Monthly Community Construction Meetings for 2022



The TICD monthly Community Construction Meetings restart in May, 2022 in order to keep the Island community updated on upcoming construction work and expected on-Island impacts due to the work.

Meetings are currently virtual, held on Zoom:

[https://us02web.zoom.us/j/9878950278?
pwd=N0Z1MklraDNzWkJXMzZkRjJZYWVGZz09](https://us02web.zoom.us/j/9878950278?pwd=N0Z1MklraDNzWkJXMzZkRjJZYWVGZz09)



When: Second Wednesday of the month at 6:00 PM

2022 Meeting Schedule:

May 11 | June 8 | July 13 | August 10

September 14 | October 12 | November 9 | December 14

TICD Construction Hotline (888) 469-0797

Please call the TICD Construction Hotline with any questions or concerns related to the above work or to other construction activities associated with the TI/YBI redevelopment project.

SF.gov/TIDA

July 4, 2022



Increase in visitors to Treasure Island are expected on Monday July 4, 2022 for viewing of Fireworks at the Great Lawn.

Expect increased vehicle traffic on the Treasure Island Causeway , Avenue of the Palms, and 9th Street.

Additionally, expect increased SFPD presence on Treasure Island that evening. Admiral Security will be patrolling the residential area as well, and can be reached at 415-760-0406 to report suspicious activity. For emergencies, please call 911.

Westpark Express Parking and Traffic Services Flaggers as well as SFMTA DPT will be on Island to assist with traffic control.

Private use of any and all fireworks on-Island is prohibited at all times. Violators will be cited. Be safe when celebrating the 4th!

Please contact Jack Nathanson with any questions, 415-274-0688.



**TREASURE ISLAND
DEVELOPMENT
AUTHORITY**

Administration Building
One Avenue of the Palms
San Francisco, CA 94130

Phone: 415-274-0660
Fax: 415-274-0299
E-mail: TIDA@sfgov.org

Bob Beck, Treasure
Island Director

Juneteenth Wellness Celebration

In the spirit of Wellness,
The Parent & Community Council
would like to extend an invitation to celebrate
and learn the meaning of Juneteenth.
Celebrate the Fathers of the community and
receive access to vital information in regard to
physical, mental, and financial wellness.

As we kick the summer off with a positive vibe.

Join us for Music Food & Raffles.

Including vaccinations for 3yrs and up.

Home Testing kits.

Date: June 25, 2022

Time: 12pm-3m

Location: 810 Ave D

Homerise Offices

The Blue Bungalows

Resources & Information Provided By

- Ask an expert presentation by DPH •Code Tenderloin
- We Heal Differently •SFPD Mobile Crisis •SFFD
- Kemper Life Insurance •And many more..



Treasure Island

JUNETEENTH SF CELEBRATION

FILLMORE STREET

CANCELED

**TREASURE ISLAND
BOAT TRIP TO SAN FRANCISCO**

Unfortunately, there just were not enough sign ups.

**Celebrate Juneteenth on
Treasure Island!!**

Tues June 14

3:00 - 5:00pm

At the Food Pantry

OR!

Sat June 18

11:30 - 2:00pm

At the Food Trucks





June 25, 2022

**Bounce
House/Slide**

GIANT GAMES

Juneteenth

**CELEBRATION
FOR THE KIDS**

RAFFLES

FOOD

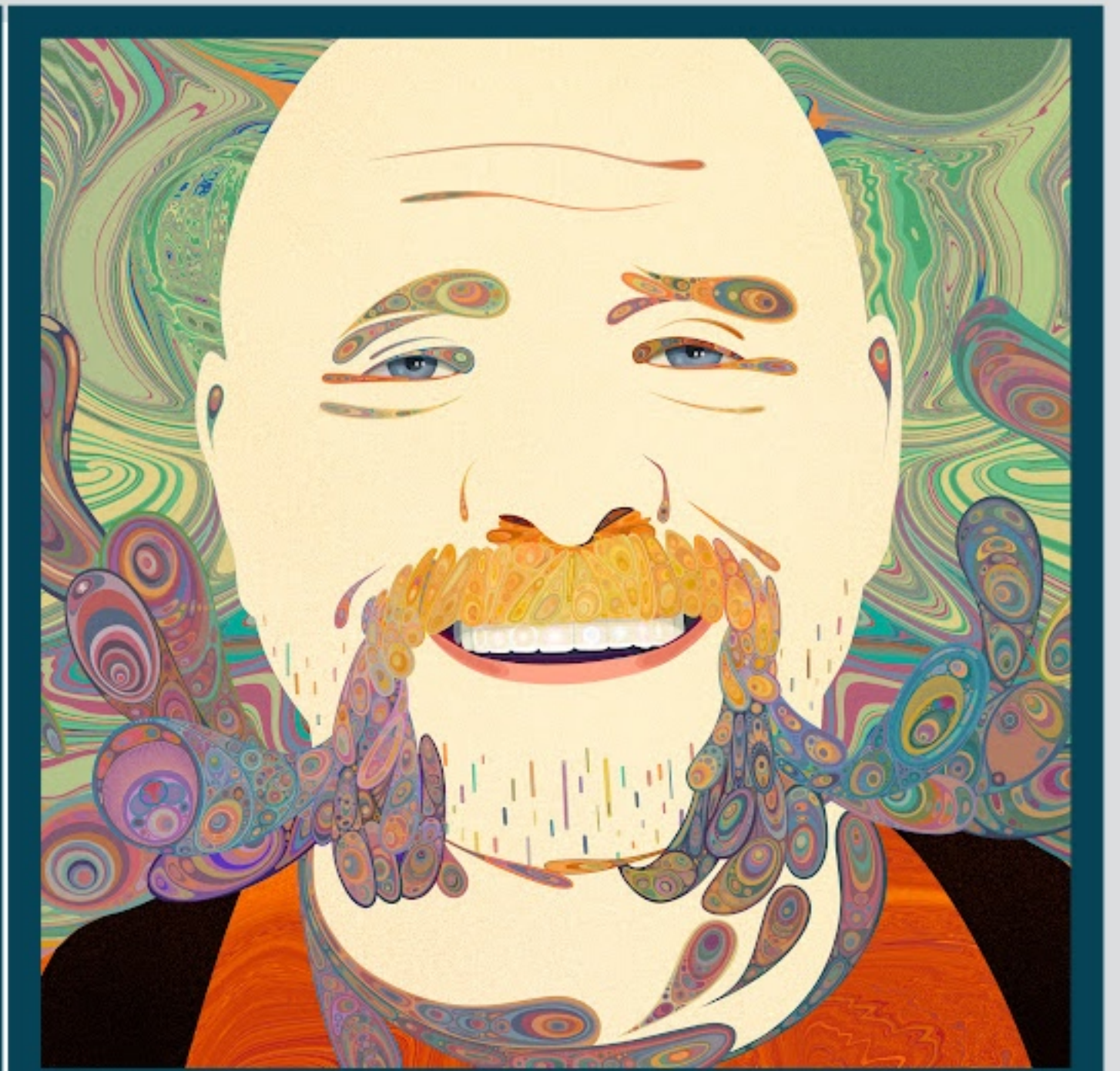
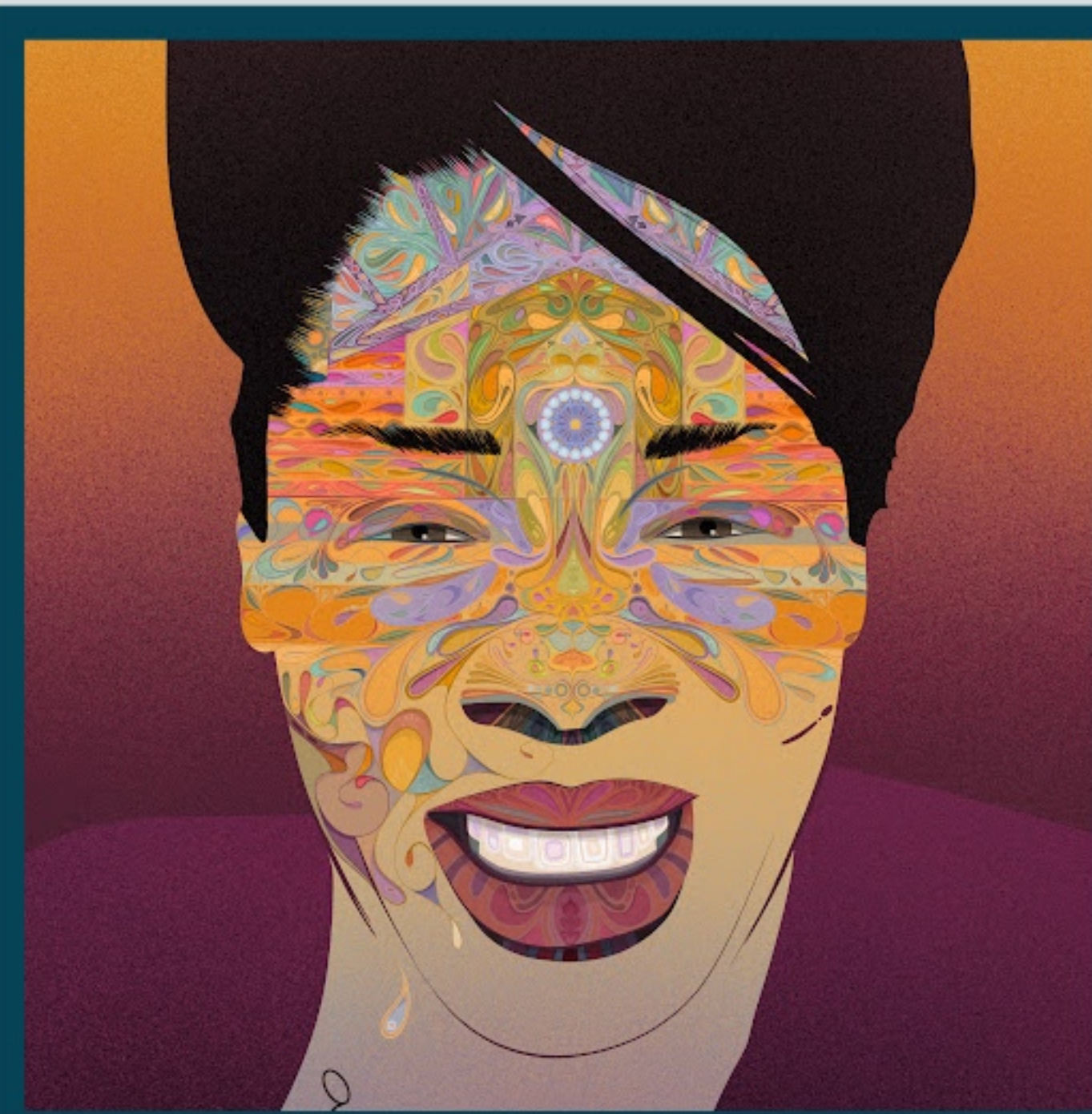
@the blue

12pm-3pm 810 Ave D bungalows



TREASURED STORIES

TREASURE ISLAND ORAL HISTORIES
1997-PRESENT



Showcasing the unique aspects of life and work on Treasure Island over the last 25 years, this exhibition features interviews, audio recordings and artist Bryce Albright's original portraits.

June 24 - August 31

Plan your visit!

Building One
1 Avenue of the Palms
San Francisco

Free and accessible - Open weekdays 9-5
and during monthly Saturday programs

OR!

Visit the Website!

Website goes live 6/24

**[treasureislandmuseum.org/
treasuredstories](https://treasureislandmuseum.org/treasuredstories)**



Sponsored by
One Treasure Island with support from the
Treasure Island Development Authority and
the Treasure Island Museum



THE ROLLIN ROOT

San Francisco

Treasure Island 10:30AM - 11:30AM
Gateview Avenue at Exposition Dr
San Francisco, CA 94130

Every Saturday



**FARM FRESHNESS
AT EVERY STOP**

THE ROLLIN' ROOT IS A FOOD TRUCK STOCKED WITH SEASONAL FRUITS,
VEGETABLES, & DAIRY PRODUCTS FROM THE FARMERS MARKET.

ROLLINROOT.ORG





SF PRIDE PARADE

Sunday, June 26th

Treasure Island

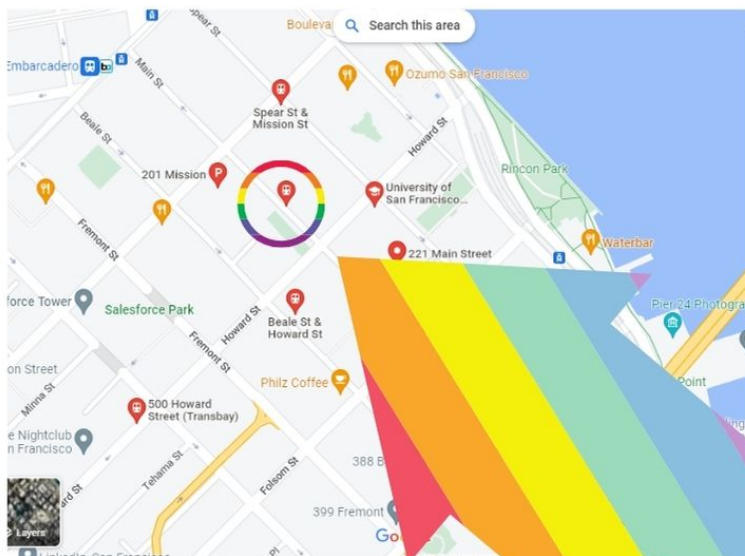
JOINS The Parade!!!!

Come march with US!!!!!!

Be at our meeting spot by 12pm

Main Street

Between Howard and Mission Street



**Point Person Day of
Chantel (415) 426-6907**

Join One Treasure Island:



MARCH IN THE SF PRIDE PARADE WITH TREASURE ISLAND

Celebrate the freedom to love



SUN
JUNE
26 **2022**



Downtown
San Francisco
(exact location TBD)

COME ONE COME ALL -

Residents, workers, friends and families!

To register, call 415-800-5937 or scan here



FIRST EXPOSURES

THE FIRST EVER

TREASURE ISLAND

YOUTH ARTS

SUMMER PROGRAM

SCAN THE QR CODE TO TAKE THE SURVEY AND
ENROLL! PLEASE ACT FAST, SPOTS ARE LIMITED

SURVEY DEADLINE IS JUNE 19TH



HOSTED BY
THE SAN FRANCISCO ARTS COMMISSION





YSA's job training program supports Berkeley based low-income youth ages 16-24!

- Become involved in a creative community!
- Learn fundamental job readiness skills!
- Fun and inspiring workshops!
- Identify and learn how to reach personal and vocational goals!
- Receive wrap-around support!

**Space is limited!
Sign up soon!**

**Summer Semester:
June 21st -
August 13th
2022**

Earn up to \$2000 for participation!

1740 Alcatraz Ave in Berkeley

Sessions
Morning: 11:30 am-2:30pm
Afternoon: 3:30pm-6:30pm
20 hours per week average
Some Saturdays required

For more information or to sign up, please email
Reginald@youthspiritartworks.org
Call (510) 858-7229
Or visit youthspiritartworks.org



City and County of San Francisco
London N. Breed
Mayor

San Francisco Department of Public Health

Grant Colfax, MD
Director of Health

FOR IMMEDIATE RELEASE:

Thursday, June 23, 2022

Contact: Alison Hawkes, Director of Communications, DPH.Press@sfdph.org

*** PRESS RELEASE ***

BAY AREA HEALTH OFFICIALS URGE AWARENESS ABOUT MONKEYPOX AS SUMMER TRAVEL AND GATHERINGS BEGIN

This is a joint statement from Alameda, Contra Costa, Marin, Napa, San Mateo, San Francisco, Santa Clara, Sonoma counties and the City of Berkeley

San Francisco, CA - As the summer season begins with increased travel and major events and gatherings, Bay Area Health Officials urge people to protect themselves against the [monkeypox virus](#), which spreads through prolonged skin-to-skin contact and bodily fluids, such as through crowded settings or sexual contact.

The alert from nine health jurisdictions comes as cases – which appear on individuals as distinctive rashes and sores that can look like blisters or pimples – continue to emerge in the Bay Area, the nation and the globe. Monkeypox is not new, but this is the first time this virus has spread in so many countries at once.

Most cases of monkeypox resolve on their own, although it can be serious. The illness often begins with flu-like symptoms before the emergence of a rash and may last for 2 to 4 weeks. A post-exposure vaccination is available through healthcare providers.

Unlike COVID-19 which spreads easily through the air, the risk of monkeypox to the general public is currently low unless they engage in higher-risk behaviors. Having sex with multiple sex partners can increase a person's risk of becoming infected when monkeypox is spreading in the community. Be aware of crowded, indoor spaces where people have close skin-to-skin contact, sex, kissing, and close breathing. The virus can also be spread through shared clothing or bedding.

“We are at a critical stage in this disease when we might have the chance to contain an outbreak if we act quickly and make people aware of the risks and how to protect themselves. Monkeypox can be preventable,” said Acting San Francisco Health Officer, Dr. Naveena Bobba. “We know that people are excited to celebrate this summer after two years of a pandemic, and we encourage them to do so safely by knowing how to protect themselves and seeing a doctor as soon as possible if they have symptoms.”

Many of the cases currently appearing are within networks of self-identified gay and bisexual men, trans people, and men who have sex with men. People in these networks are currently at higher risk, though people of any sexual orientation or gender identity can become infected and spread monkeypox. Public awareness is important as the disease could spread within potentially larger groups or networks of people.

Bay Area Health Officials urge the media, government officials, and the community at-large to avoid stigmatizing a particular group or person for monkeypox, but rather support those at highest risk and keep others from becoming complacent.



City and County of San Francisco
London N. Breed
Mayor

San Francisco Department of Public Health

Grant Colfax, MD
Director of Health

There are other contagious illnesses that can cause rash or skin lesions. For example, syphilis and herpes are much more common than monkeypox, can look similar, and should be treated too.

How to protect yourself:

- Consider covering exposed skin in dense, indoor crowds
- Don't share bedding or clothing with others when possible
- Before having close, physical contact with others, talk to your partners about their health and any recent rashes or sores
- Stay aware if traveling to countries where there are outbreaks

How to protect others:

If you have symptoms particularly a rash consistent with monkeypox, or if you have been in contact with someone who has been diagnosed with monkeypox:

- Stay home if you are feeling sick
- Contact a health care provider as soon as possible for an evaluation
- Avoid skin-to-skin, or close contact with others, including sexual contact, until a medical evaluation has been completed
- Inform sex partners about any symptoms you are experiencing
- Cover the rash with clean, dry, loose-fitting clothing
- Wear a well-fitted mask
- If you are contacted by public health officials, answer their confidential questions to help protect others who may have been exposed

How to get help:

If you do not have a provider, or have difficulty scheduling an appointment, you can be seen at SF City Clinic at 7th Street, San Francisco (628-217-6600) or at Strut located at 470 Castro Street (415-581-1600).

San Francisco has identified ten (10) cases of monkeypox to date but anticipates more cases of monkeypox could occur. The San Francisco Department of Public Health (SFPDH) is monitoring updates and guidance from the U.S. Centers for Disease Control and Prevention (CDC) and the California Department of Public Health (CDPH) on the evolving situation and has systems in place to receive reports of suspected cases and reach out to individuals and their close contacts. SFPDH has procured a limited supply of the Jynneos vaccine for preventative use in people who are identified as close contacts.

More information about monkeypox can be found here:

- **San Francisco guidance, updates and outreach materials:** sf.gov/monkeypox
- **Q&A from CDPH:** cdph.ca.gov/Programs/CID/DCDC/Pages/Monkeypox-Questions-and-Answers.aspx
- **Information on monkeypox from the CDC:** cdc.gov/poxvirus/monkeypox/response/2022/index.html
- **Social gatherings and safer sex from the CDC:** cdc.gov/poxvirus/monkeypox/specific-settings/social-gatherings.html

###

Treasure Island
Community Meeting Agenda:
June 15, 2022

Meeting will be recorded

- Welcome/Introductions
 - Please introduce yourself and answer the following question. What's the best or weirdest thing you've seen on TI?
- General Treasure Island Updates
 - Community and Events updates
 - Ship Shape Community Center
 - YMCA kitchen/room rental for resident events
 - Juneteenth celebration
 - TI Oral History Project
 - TI walking in SF Pride Parade
 - HSA Food Trucks ending this month
 - Supplemental Transportation Study
 - National Night Out 8/2/22
 - San Francisco Public Library presentation, Alejandro Gallegos
 - TI Development/ Island Operations
 - Presentation by SFPD, Lt. Brendan O'Connor
 - TI Development
 - Follow Up on questions raised from last meeting
 - Q & A on presentations
- General Participant Feedback
- Future meetings format and schedule
 - August meeting on zoom or in person?
- Adjournment

June 10, 2022

An Island of Lost Beauty in San Francisco Bay

by Jonah Raskin

Call it human perversity, or an innate preoccupation with the lost and the destroyed. In any case wastelands, those spaces where nothing seems to grow, have inspired poets, writers and artists as much if not more than gardens and lush landscapes. Think of T. S. Eliot's poem *The Waste Land* and F. Scott Fitzgerald's vivid description in *The Great Gatsby* of a "desolate area" where "ashes grow like wheat into ridges and hills and grotesque gardens...take the forms of houses and chimneys... and men who move dimly and already crumbling through the powdery air." Then, too, there's the group of paintings titled "The Waste Land" by the famed Brazilian artist, Vik Muniz, that depict the world's largest garbage dump on the outskirts of Rio de Janeiro where an army of *catadores* sort through the trash and find buried treasures.

Peter Whitehead, the English-born artist, photographer and musician, settled in San Francisco in 1975 and began a long and distinguished career that has included the building of odd musical instruments and the making of unusual sounds. Years after he first arrived in the city, he began, on foot, to explore Treasure Island, the man-made 400-acre parcel of land and an invaluable piece of property in San Francisco Bay. Between 2017-2020, Whitehead took more than 3,000 color photos as he wandered across the island. Now, 170 of them grace the pages of his new book, *Treasure Land*, (Blurb and Amazon; \$75) which depict the "awkward beauty" he found in the midst of "collapse and decay" and that portray what he calls a "particular time in San Francisco history."

Indeed, *Treasure Island* is a testament to the transitory nature of the city and its environs and where the past thrives in the midst of the present, and the old exists side by side with the new. Something is always coming down, something else going up.

"Sites such as Treasure Island provide an opportunity to observe the long term effects of time and weathering on the man-made world," Whitehead told me. "My camera frames small areas and attempts to make some kind of visual sense of it all." No small feat though Whitehead is an accomplished photographer who sees what others neglect or refuse to see. Treasure Island provided an ideal place for him to work his magic.

Built in 1936 and 1937 from rock and sand dredged from the Bay and deposited adjacent to Yerba Buena Island, Treasure Island was originally intended to provide the city with its second airport. In 1939 and 1940, it served as the home for the Golden Gate International Exhibition. The Navy took it over at the start of World War II, used it throughout the wars in Korea and Vietnam and abandoned it in 1997, leaving vast quantities of contaminated dirt and radiation levels dangerous to humans and all living things.

Whitehead's first walking tour of the island took place not long after Navy contractors removed tons of polluted soil, though nearly everywhere he turned he saw signs that read "danger" and

“keep out.” He paid no attention, but rather continued to explore, to look and see without blinders.

Like millions of commuters who cross the Bay Bridge every year, Whitehead first viewed Treasure Island fleetingly and from a distance. Next, he took the bus there from the City, wandered around for a day and, as he explained, “In every direction I looked there was something worth a picture.” Though he felt a “sense of doom,” he went back dozens of times until the island felt like home. His photos depict battered buildings, broken skateboards, abandoned and mysterious structures, isolated picnic tables and benches, rocks along the shore, large white clouds in the sky and spectacular views of San Francisco, the Bay Bridge and the Bay itself.

In the essay that introduces his photos, Whitehead explains, “I’m mostly drawn to urban situations and derelict post-industrial sites.” He adds that most of the sites he photographed on Treasure Island from 2007 to 2020 no longer exist. So his book offers a document of a lost time and a lost place, though from his perspective, “Nothing is Lost, Nothing is Created, Everything is Transformed.”

Those nine words provide the title for Whitehead’s first book which contains the journals he kept from 1982 to 2015, and that are made up of bits and pieces, words and images – a collage of sorts—that record his life and times as an artist who has salvaged trash and transformed the ugly into something elegant. “Where I see colors and shapes and get excited about a collapsing fence, many, if not most, would find it depressing and want to replace it with a new one,” Whitehead told me. “To them I say ‘open your eyes. There’s beauty and richness everywhere, even in the most derelict situations.’”

Jonah Raskin is the author of Beat Blues, San Francisco, 1955.

Yerba Buena Island Officially Welcomes Residents in San Francisco

June 14, 2022



San Francisco's New Landmark Neighborhood Offers a First-of-Its-Kind Living Experience with a Collection of Forward-Thinking Residences, Wellness-Oriented Amenities, and Sweeping Panoramic Views

SAN FRANCISCO (June 13, 2022) – Boutique developer, Wilson Meany, and real estate investment firm, Stockbridge Capital Group, are proud to announce the official opening of Yerba Buena Island, marked by the first residential move-ins at The Bristol, the island's six-story condominium building that redefines urban living. The milestone development, two decades in the making, represents one of the most significant additions to luxury real estate and a historic day for San Francisco in welcoming a remarkable new neighborhood that offers the very best of Bay Area living with a first-of-its-kind community, unparalleled 360-degree views, and a deep connection to nature in one of the world's greatest cities.

"After 20 years of thoughtful planning and collaboration with the City of San Francisco and a team of world-class designers and architects, today our ambitions come to fruition with the opening of the Residences at Yerba Buena Island," said Chris Meany, Partner at Wilson Meany. Wilson Meany develops holistic environments that allow people to connect with one another and the natural surroundings, with highly notable projects like the historic San Francisco Ferry Building. "We are proud to present an inspired, new neighborhood in San Francisco, and we look forward to welcoming our first residents with

<https://news.theregistrysf.com/yerba-buena-island-officially-welcomes-residents-in-san-francisco%EF%BF%BC/>

consciously designed spaces and amenities, unbelievable views, and access to the best of the city and nature alike.”

“The opening of the Residences at Yerba Buena Island marks a rare celebration for San Francisco – the transformative beginning of a new neighborhood,” said San Francisco Mayor London Breed. “The unprecedented project revitalizes the link between San Francisco and the East Bay, providing new possibilities for residents, locals, and visitors to explore our incredible city. I look forward to watching this innovative community blossom and thrive as thousands of new homes come to Yerba Buena and Treasure Island.”

Redefining San Francisco Living

The Residences at Yerba Buena Island is an urban oasis comprising exquisite residences nestled in a remarkably distinct setting on the naturally formed Yerba Buena Island, located in the heart of the San Francisco Bay. In collaboration with acclaimed talent like Hart Howerton, Edmonds + Lee Architects, Meyer Davis, and Aidlin Darling, the forward-thinking residences are sustainably designed to honor the diverse topography of the island, while capturing 360-degree views of the Bay, San Francisco skyline, iconic bridges, and East Bay hills. The luxurious, nature-inspired community is woven into its outdoor surroundings and boasts a collection of distinctive townhomes, flats, condominiums, penthouses, and estate homesites, as well as a host of extraordinary wellness-minded amenities and access to parks, Clipper Cove Beach, trails, and more, creating an idyllic experience of San Francisco merely ten minutes from downtown.

“We worked closely with Wilson Meany and the design team to create a neighborhood emblematic of the island’s unique setting, where urban San Francisco living is elevated by nature. The Residences at Yerba Buena Island is the collaborative realization of exceptional site design, architecture, amenities, nature, and public space harmoniously coming together,” said Tim Slattery, AIA, Partner at Hart Howerton.

The landmark project is part of the adjacent Treasure Island master plan, encompassing residences, schools, hotels, retail, entertainment venues, a vibrant art scene, an unprecedented 300 acres of open space and parks, and a newly opened ferry terminal.

The Bristol: First Move-Ins and Model Debuts

First residential move-ins are underway at The Bristol, which is now open and comprises modern condominium residences designed by Hart Howerton with GreenPoint rated interiors by Edmonds + Lee Architects. Perched on a forested hillside, The Bristol is thoughtfully curved and centered around an open-air courtyard – the heart of the building, which is anchored by a Grandiflora Victoria Magnolia tree, affording a parklike setting to encourage connectivity with neighbors, family, and friends.

Upon entry to the ground floor lobby, residents are greeted by large walls of framed glass that allow the sun to filter through upon the Flexform sectional and a rich wooden floor complemented by hand knotted rugs from Tibet. A continuous wall of wood draws the eye up above the richly paneled reception desk detailed with a slab of Bardiglio marble behind it, and to the luxurious height of the space, which is leavened with woven pendant lights from Contardi. An outdoor terrace offers an intersection of the bustle of outside life and the calm restoration of the building’s interior; decorative wicker lighting from Bover accompanies the outdoor furniture inviting residents to curl up, rest, or have a private conversation.

The elevator lobby is lined in a variety of wooden textures, from sleek panels to striated slats, which make the long expanse of space feel intimate. End tables line the walls, breaking up the space and introducing

<https://news.theregistrysf.com/yerba-buena-island-officially-welcomes-residents-in-san-francisco%E2%82%AC/>

the sense of a residential foyer, while a cantilevered custom designed walnut bench offers a sophisticated place to sit. Once past the public entryway, luxuriously carpeted hallways curve to provide a feeling of discovery and privacy, while tastefully framed doorways offer a feeling of serenity and arrival to each well-appointed residence.

The Bristol offers studio, one-, two-, and three-bedroom luxury residences and penthouses, ranging in size from approximately 630 to 2,248 square feet, and featuring panoramic views of Clipper Cove, the eastern span of the Bay Bridge, and the surrounding hills. Its gracious floor plans have been impeccably designed with floor to ceiling windows to maximize sunlight, views, and entertaining spaces with select homes offering private balconies. Studios and one-bedroom homes offer spacious room for gathering, while two- and three-bedroom homes feature expansive living spaces, as well as elegant master suites with walk-in closets, spa-like baths that feature freestanding soaking tubs and Carrara marble vanity countertops. Tranquil living spaces are complemented by natural materials and textures that add an inviting warmth to the interiors. An array of amenitized common areas are found throughout the building, including a fitness studio, a dedicated children's playroom, lounges, and a rooftop terrace outfitted with built-in grills, an outdoor fireplace, outdoor seating for drinking, dining, and socializing, and sweeping views of San Francisco, the Bay Bridge, and the Golden Gate Bridge.

"The spectacular views at Yerba Buena Island immediately drew us in," said Diane Master, a new resident and one of the first buyers at The Bristol. "As design enthusiasts, my husband and I were delighted to discover the sophisticated interior finishes and thoughtful layout of the space perfectly suits our lifestyle. The proximity to San Francisco and the East Bay is icing on the cake – the City is at our fingertips, but once on the island, we feel worlds away."

The opening of The Bristol coincides with the reveal of two model residences. Designed in collaboration with Edmonds + Lee Architects and stylist, Kendra Smoot, with art curated by Jessica Silverman Gallery, the newly completed one- and two-bedroom models are inspired by both the serenity of the water and sky and the bright flora of the island, as well as the desire to integrate the smart, modern design of the handsome and tailored building. Furniture selections from Minotti, B&B Italia, and Maxalto provide best in classic timeless interior design, marrying the sophistication of centuries-old Italian craftsmanship with a light approachable California style. Richly textured fabrics, warm woods, and bright bronze collaborate with and speak to one another from each room, providing the same feeling of lively cohesion that the interior design produces throughout. The furnishing is the final realization of the meticulously designed interiors, dedicated to the tradition of quality as displayed by European partners such as Arclinea & Dornbracht, reimagined for the new California lifestyle.

"Inspired by the locale, both the stunning nature that surrounds us and the cultural vibrancy of the Bay Area, we were thrilled to realize the combination of deep restorative calm and lively civic life in the model spaces at The Bristol," said Vivian Lee, AIA, Principle of Edmonds + Lee Architects. "We layered natural materials to create a feeling of sophisticated coziness and warmth, while also introducing depth and texture. The sleek interiors, purposefully neutral, invite each owner to bring their own style, work in perfect concert with sweeping views of the Bay's most iconic sights."

Unprecedented Access to Nature

Yerba Buena Island will be a new frontier in the Bay Area for active pursuits amid nature with approximately 72 acres of natural habitat with parks, sandy beaches, and five miles of hiking and biking paths. A team of award-winning firms, including Hart Howerton, BDE Architecture, Inc., Cliff Lowe Associates, Inc., and Hood Design Studio are collaborating on the overall vision, which honors and blends with the island's distinct geography.

<https://news.theregistrysf.com/yerba-buena-island-officially-welcomes-residents-in-san-francisco%E2%99%A2/>

Luxe Wellness-Oriented Amenities

Homeowners of the Residences at Yerba Buena Island will be afforded a unique, robust suite of dedicated amenities that nurture their well-being and foster community. The community will be centered in The Island Club, a private, multi-level community gathering place designed by San Francisco-based firm, Aidlin Darling Design, offering a 10,000-square-foot oasis to relax and recharge, which features dramatic floor-to-ceiling windows for unobstructed views of the San Francisco skyline, Bay Bridge, and Golden Gate Bridge. The Island Club amenities include a lounge, dining room, bar, game room, spa, sauna, massage room, locker rooms, fitness studio, terrace, and outdoor lap pool.

An inherent sense of community is amplified by an extensive services and experiences program at The Bristol. Led by General Manager Kate Drobny and Resident Services Director Amy Vleck, residents will enjoy conveniences such as doorstep package delivery and 24/7 security, as well as access to à la carte services including dry cleaning, car washing, pet care including dog walking, wellness services such as private training, massage and a nutritionist, housekeeping, and grocery delivery through Whole Foods/Amazon Fresh, Good Eggs, Farmstead, and more. Additionally, residents are invited to indulge in a complimentary beverage cart available daily in the lobby for fresh coffee, tea, and espresso, and connect with new neighbors and friends at weekly hosted cocktail events.

A new, daily ferry service from San Francisco's Ferry Building connects residents, locals, and visitors with easy access to both Yerba Buena Island and Treasure Island via a quick 10-minute trip across the Bay. A private shuttle transports residents from the Treasure Island Ferry Terminal to and from their homes, making for a seamless and carefree commute.

The Residences at Yerba Buena Island

Residences at The Bristol are priced starting from the mid \$700,000s for studios, from the low \$1 millions for one-bedrooms, from the low \$1.6 millions for two-bedrooms, and from the low \$3.6 millions for three-bedrooms. The Residences at Yerba Buena Island looks forward to welcoming the next phase of owners at The Townhomes and The Flats, which are now under construction and available for purchase with move-ins starting next year.

A state-of-the-art Sales Gallery is located at 724 Battery Street in San Francisco's Jackson Square neighborhood – only blocks from the Financial District and waterfront that captures sweeping views of Yerba Buena Island. Compass Development MARKETING GROUP is the exclusive marketing and sales firm for the Residences at Yerba Buena Island.

“The strong sales demand we've experienced represents a new paradigm of what Bay Area homebuyers are seeking,” said Krysen Heathwood, Senior Managing Director of Compass Development Marketing Group. “The Residences at Yerba Buena Island answers a robust market of buyers' desire to be centrally located in San Francisco, while also experiencing the benefits and tranquility of nature.”

ABOUT WILSON MEANY

Wilson Meany is a boutique San Francisco-based developer of mixed-use, residential, retail, office and master plan urban infill properties. Among Wilson Meany's signature projects are the historic San Francisco Ferry Building, the Art Deco icon of 140 New Montgomery, the massive Bay Meadows redevelopment and the former Hollywood Park racetrack.

ABOUT STOCKBRIDGE

Stockbridge is a private equity real estate investment management firm led by veteran industry professionals. The firm's portfolio comprises assets across the investment risk spectrum, including core, value-added and opportunistic strategies. Stockbridge and its affiliates have approximately \$24.9 billion

<https://news.theregistrysf.com/yerba-buena-island-officially-welcomes-residents-in-san-francisco%E2%99%BC/>

of assets under management (as of September 30, 2021) spanning all major real estate property types and certain specialty property types throughout the United States.



West Coast Commercial Real Estate News

Expert panel inextricably links Treasure Island and Hunters Point

June 17, 2022

A Tetra Tech whistleblower attorney, environmental doctor, Hunters Point activist and investigative reporter establish the inextricable link between Treasure Island and Hunters Point in the Navy's toxic contamination of two Superfund sites

by Carol Harvey, Investigative Reporter

During a Friday, May 20, 2022, [virtual panel discussion](#) (embedded below) sponsored by the San Francisco City College Journalism Department, student reporter Garrett Leahy posed probing questions of four experts: Tetra Tech whistleblower attorney David Anton, environmental physician James Dahlgren, MD, Hunters Point resident activist Arieann Harrison and Treasure Island investigative reporter Carol Harvey. Their conversation confirmed the inextricable link between Treasure Island and Hunters Point, exposing the Navy's liability for the contamination of the two Superfund sites with radiation, chemicals and heavy metals that have caused illness and death among resident low-income people and people of color. The following article is a paraphrased version of the meeting.

Garrett Leahy: Welcome! I'm Garrett Leahy, participant in the Emerging Journalist Fellowship Initiative, a California Humanities project funded by the Mellon Foundation, sponsored by City College of San Francisco Journalism Department Chair Juan Gonzales and faculty advisor Alex Mullaney.

Whistleblower attorney David Anton, James Dahlgren, MD, Arieann Harrison, environmental activist, and Carol Harvey, investigative journalist, will discuss environmental justice connecting two San Francisco neighborhoods, Treasure Island and Bayview Hunters Point.

David Anton, discrimination and whistleblower attorney, who helped uncover malfeasance by Navy contractor Tetra Tech at Hunters Point, also exposed wrongdoing at Treasure Island. Anton represents nearly a dozen radiation workers who came forward and blew the whistle on falsification of dangerously high radiation levels at both San Francisco Superfund sites.

James Dahlgren, M.D. treated occupational and environmental poisoning victims for 50 years and works with Dr. Ahimsa Porter Sumchai in her Hunters Point biomonitoring program.

Arieann Harrison, Bayview Hunters Point resident and "results-driven activist," established the Marie Harrison Community Foundation honoring her mother, who was a preeminent environmental justice advocate until her passing in 2019.

Through her foundation, Arieann works tirelessly on environmental justice initiatives that impact the Bayview Hunters Point community. She was instrumental in bringing contamination from the cement-crushing recycling plants to the attention of the District 10 supervisor and getting them shut down.

Reporter Carol Harvey covers Treasure Island environmental racism and Navy contamination of soil and groundwater with radiation, chemicals and heavy metals, toxins that cause illnesses and deaths. She helped attorney Stanley Goff write a \$2 billion class action lawsuit alleging fraud by the Navy, the Treasure Island Development Authority (TIDA) and property manager John Stewart, entities who profit from exposure of residents to toxins.

Panelists, starting with Carol Harvey, please compare Navy toxins at Bayview Hunters Point and Treasure Island and describe the risks.

The Navy made Treasure Island radioactive and forced people to live there

Carol Harvey: The Navy ran atomic, biological and chemical warfare (ABC) schools that saturated Treasure Island soil, groundwater and air with radiation, chemicals and heavy metals.

Navy training in radioactive material included the use of plutonium, cesium-137, radium-226 and other radioisotopes. Sailors were taught to deploy the chemical weapons VX, Sarin and mustard, toxic gasses that kill entire populations. Chemicals were also left in the soil when the Navy burned garbage in pits at the shoreline that faces the Golden Gate Bridge.

Navy operations produced the heavy metals lead, mercury and arsenic as well.



In 1965 the Navy graded the pits, constructing townhouses over the toxic soil. For years, Navy and civilian residents have become sick from poisons beneath their homes.

In the 1990s, the EPA-mandated a cleanup. The Navy fenced off five remediation zones – three along the shore and two inland – reassuring residents the toxins were contained.

In 2013, after reporters dug up cesium-137 outside the cleanup zones, the California Department of Public Health “suggested” the Navy improve its radiation search.

Twenty-seven years later, in summer 2022, the Navy will remove the fence around the last cleanup zone.

Garrett Leahy: In the Bay View newspaper, you wrote the Navy excavated 1,200 radioactive objects across the island, and in 2019, workers dug a basketball-sized chunk of irradiated soil from under a resident's doorstep.

Carol Harvey: Yes. On Treasure Island, the Navy locating radiation beneath a doorstep or a yard is a common occurrence.

Environmental justice for Bayview Hunters Point

Garrett Leahy: Arieann Harrison, could you describe Bayview Hunters Point's contaminants and resident exposures?

Arieann Harrison: I'm passionate about Bayview Hunters Point's human rights and health issues.

Our community has been overlooked, disenfranchised, burdened and steadily impacted and inundated with toxic chemical, radioactive and industrial waste by notorious big-scale industrial polluters like the former PG&E plant and cement-crushing recycle companies in the “Circle of Death” surrounding us. It's a problem for diverse low-income communities of color that California doesn't enforce environmental laws.

For decades, BVHP mothers said: “I'm sick. My kids are sick.” What's different now is that we're including the science.

We're ingesting chemicals through biomagnification, the accumulation and concentration of toxins in our bodies from food and water exposure. I'm breathing poisons through my nose and lungs, getting it on my skin, carrying it around, opening my window and allowing it in to affect my children.

At 730 Innes, the shipyard was my backyard. My son, Giovanni, had recurring nosebleeds. My urinalysis tox screen shows above reference range copper, manganese, rubidium, thallium, vanadium and radiation.

The nation's highest rate of respiratory disease and cancer is concentrated right here on the hill.

I cannot sit idly by seeing pictures of the preposterous development plans for Hunters Point. Wouldn't it make sense to clean up the radioactive waste? Property values would rise, peoples' health improve and you wouldn't be putting something pretty over something that can kill.

Navy toxins connect Treasure Island and Hunters Point

Garrett Leahy: David Anton, you understand contaminants and exposures on both bases.

David Anton: The former bases are the same, but have dramatically different histories. The military took both bases in World War II.

The Navy spread contaminated dust and left a tremendous amount of radioactivity from ships and four decades of radioactive experiments in Hunters Point soil.

In the '40s, '50s and '60s, Hunters Point was the central spot to conduct radioactive research for military defense and offense. A research base was established with around 1,200 people working with radioactivity in science and related areas.

A marshy parcel was filled with animal bodies that had been subjected to radioactive experiments along with large hunks of metal from ships exposed to atomic explosions at the Bikini Islands and massive amounts of radioactive material that was sandblasted off those ships.

Military facilities at Los Alamos and the western United States shipped radioactive waste to Hunters Point. Some went into the landfill. At least 18,000 55-gallon drums of radioactive waste along with the radioactive aircraft carrier, Independence, were sunk and now contaminate the ocean floor near the Farallon islands.

Navy handling of dangerous radioactivity at Hunters Point and Treasure Island was incredibly sloppy. In base closure EPA-mandated cleanups, the Navy “forgot” decades of radioactive history and remediated only small amounts of radioactive material. For years, the Navy promised, “We'll cover it. It's not dangerous.”

The Navy operated facilities on Treasure Island using radiation sources thousands of times more toxic than at Hunters Point.

In the '40s and '50s in Building 3, a large aircraft carrier-looking building, the Navy developed extremely intense radium coating on metal discs used in thousands of night vision goggles.

Radioactive coating on many discs was defective. Broken discs went into the trash.

Radioactive material was burned in a large incinerator. Though its records document radioactive ash in the incinerator, and the highly radioactive discs were thrown in big trenches as well, the Navy did what's cheaper and easier – not what's right.

The Navy operated facilities on Treasure Island using radiation sources thousands of times more toxic than at Hunters Point. – Attorney David Anton

As Carol reported, they graded over pits containing radioactive materials. Building townhouses for sailors' families on this radioactive soil was cheaper than shipping the toxic waste to facilities.

When the base closed in 1997, unaware it was an incredibly contaminated toxic dump, San Francisco eased its housing shortage by sending children, elders and homeless people to Treasure Island.

Before 2006, the Navy told the EPA there was no history of radioactivity on Treasure Island besides the 1939 World's Fair radium buttons.

Radioactive contamination was found, as Carol said, all across Treasure Island, not just where housing is located.

In 2007, workers who thought they wouldn't find anything were sent in to do radiation scans. Their machines went crazy measuring extremely high radiation levels near houses with families and children. I began representing the workers who discovered the radioactivity. They informed me, and I became concerned.

Workers were ordered not to scan around or under buildings. The Navy didn't want it exposed that people had been living over radiation. That basketball-sized radioactive material was identified in 2007.

Lack of concern for peoples' health left it buried there until 2019. It's a disaster. Children living on top of radioactive waste got leukemia. Under the seesaw in a park, radioactivity was so extreme that the Navy couldn't figure out how to remove it safely.

Treasure Island water quality is a disaster.

The Navy said, "It's safe. We're taking care of it." That's not the case.

Long term exposure to radioactivity is dangerous. If you get it in your mouth, your nose or your body, you're in trouble.

Treasure Island chemicals exceed chemicals at Hunters Point. Firefighting training classes prepared sailors to deal with ship fires. C-8 chemicals in foam they used to douse fires is incredibly toxic, longterm, difficult to get out and very contaminating to water. Treasure Island water quality is a disaster.

It's a shame the Navy turned its back on the damage it caused. It expended zero effort tracking families' health. Nor are workers told they have risks.

The Navy has not disclosed any of this to the public. Development at Hunters Point and Treasure Island will churn up soil again, exposing more people and workers to hazards.

Racial injustice predominates at Treasure Island and Hunters Point

Garrett Leahy: Arieann, In Bayview Hunters Point, there have been a few lawsuits, including one where a settlement was awarded recently for \$6.3 million to the plaintiffs of a class action lawsuit regarding contamination under homeowners' homes in Hunters Point. Does this victory represent a pivot in the struggle for environmental justice?

Arieann Harrison: It validated what people have said for a long time. However, new homeowners won this lawsuit based on property values falling. Can we put human beings above property? What about the quality of our lives going down from toxins in our bodies?

Note: Cotchett, Pitre & McCarthy filed a class action lawsuit for Bayview Hunters Point condo buyers. Bonner & Bonner filed another class action lawsuit for 9,000 Bayview Hunters Point residents.

I don't think advocating for reparations is asking too much. It's ridiculous that African American females in their 20s are diagnosed with breast cancer. Bayview Hunters Point residents need long term care to remove the poisons from our systems.

Carol Harvey: Can I piggyback on something Arieann said?

Former mayor Willie Brown decided San Francisco would solve its perennial homeless problem – which is unattractive to tourists – by farming homeless, mostly poor and people of color, to Treasure Island.

Garrett Leahy: You can. Then I'll ask your thoughts on the class action suit for Treasure Island residents.

Carol Harvey: David was generous about the City's decision to put people on Treasure Island in the '90s –

Garrett Leahy: During Willie Brown's tenure as mayor.

Carol Harvey: Exactly. My Bay View articles hold Willie Brown responsible. Brown decided San Francisco would solve its perennial homeless problem – which is unattractive to tourists – by farming homeless, mostly poor and people of color, to Treasure Island in subsidized programs to “fix” their drug problems and mental illness.

Three-quarters of islanders are people of color – African American, Hispanic and Asian. The largest subgroup is Hispanic; the smallest, low-income Caucasians. All these vulnerable groups develop tumors, seizures, cancers, heart failure, heart attacks and respiratory problems from toxic dust.

While Arieann and David were speaking, I thought of an African-American resident who suffered strokes and underwent heart bypass surgery after living near two radiation cleanup sites, a 10-year-old Pacific Islander boy who died of a brain tumor after exposure to his dog who also succumbed to enormous tumors most likely from digging in the backyard, and art student Violet Andry, who suffered neurological damage and seizures living next to a radiation cleanup zone in 2007. Fifteen years later in 2022, Violet still experiences tremors, nausea, dizziness and inability to stand.

Garrett Leahy: The class action lawsuit alleges the Navy doesn't disclose contamination to residents before they move in.

Carol Harvey: That's right. Residents show me leases. I have never met anyone who was told in advance the place is toxic. John Stewart's website to this day advertises beautiful apartments in a stunning setting.

Stanley Goff verifies the suit is advancing through the courts.

Garrett Leahy: Welcome, Dr. James Dahlgren! You have years of expertise with environmental toxicology and are involved in a biomonitoring project detecting heavy metals and other contaminants in residents' urine.

James Dahlgren: Several months ago, I joined Dr. Ahimsa Sumchai, who has done a brilliant job putting this program together.

Genova, our North Carolina laboratory, set values for “normal people.” Looking at Hunters Point biomonitoring results, people are way above “normal.”

They're even higher than in California and the United States. California's Office of Health Hazard Evaluation's biomonitoring project (EOHHA) found some of the same metals that Dr. Sumchai and I have monitored. Their levels are far lower than our laboratory results.

Data shows that people closest to the shipyard have high radioactive chemical values in their urine – uranium, cesium and strontium.

People along the border show increased cancer rates. Breast and brain radiation-induced cancers are in excess.

In the '90s, a breast cancer study found levels in younger BVHP women much higher than in any study in the United States or around the world.

We now know plutonium was made by atomic bombs and would have been a major contaminating factor when the Navy was sandblasting those ships. It doesn't take much plutonium to cause increases in breast cancer.

A San Francisco Health Department study in the '90s found a high rate of lung cancer around Bayview Hunters Point. They speculated people smoke more, never considering plutonium as a well-known cause. In studies, one billionth of a gram of plutonium causes a hundred percent of animals to develop lung cancer.

This is not isolated to Hunters Point. In the '40s and '50s, when the Navy used high-pressure steam to sandblast radioactive ships, radiation blew into the air and traveled miles, probably causing increased cancer rates in Marin, San Mateo and San Francisco.

Viewers ask whether it's safe to visit or live on Treasure Island?

Garrett Leahy: A question from the chat. Carol and David, if people ride the ferry to the island, should they worry about contamination?

David Anton: Avoid it if it's windy and construction is going on. Radioactive material blows in the wind. The big problem is regular exposure or getting it inside your body by breathing or touching it.

Never drink the water. Take bottled water.

Be careful about eating anything exposed to wind. If you go to a restaurant, eat inside. Don't use food trucks. Put covers over your shoes.

Carol Harvey: For years, I've tromped around shooting videos. I'm not sick, but speaking into my video camera, my voice gets hoarse within a few blocks.



Wear a mask. Dust alone can clog your lungs and heart. Chemicals, radiological materials and heavy metals ride on dust.

Booties are a good idea. If you kick up dust in bare dirt, you'll track it home on your shoes. Never drink the water. Take bottled water.

Arieann Harrison: Can I put into the universe that Bayview is pushing for San Francisco to become an AB 617 community. Contact me if you're interested in Christina Garcia's 2017 Assembly Bill 617 addressing pollution in environmental justice communities, advocating for funding to do the work ourselves so we won't have to depend on the government for things like measuring air quality.

Thank you for creating a platform on these issues.

Garrett Leahy: We appreciate your time sharing your expertise regarding Bayview Hunters Point and Treasure Island.

Carol Harvey is a San Francisco political journalist specializing in human rights and civil rights. She can be reached at carolharvey1111@gmail.com.

Police Say Treasure Island Is A Bad Idea For Fireworks Watching

June 30, 2022

By Tony Hicks

Bay City News Foundation

The San Francisco Police Department is advising fireworks lovers to steer clear of Treasure Island on the Fourth of July.

"Treasure Island for viewing the fireworks? Think again," the department tweeted Wednesday. "Due to ongoing construction, viewing areas for the fireworks show and parking will be extremely limited and roadways into parking areas will be inaccessible."

Fireworks are set to start over the San Francisco waterfront, near Fisherman's Wharf, at 9:30 p.m. Monday. For a roundup of Fourth of July events, go to <https://bit.ly/3yrKNzi>.