



San Francisco Health Network
Laguna Honda Hospital
and Rehabilitation Center

Laguna Honda Hospital Executive Team Update

July 13th, 2026



LHH Care Experience

▶ Spreading Joy with Crane Challenge at LHH!

Staff stopped by the Wellness Hub on the final day of the Crane Challenge to fold one last crane, enter a raffle, and enjoy some tea.

Thank you to the Care Experience team for spearheading this opportunity to spread kindness, appreciation, and joy throughout our staff.

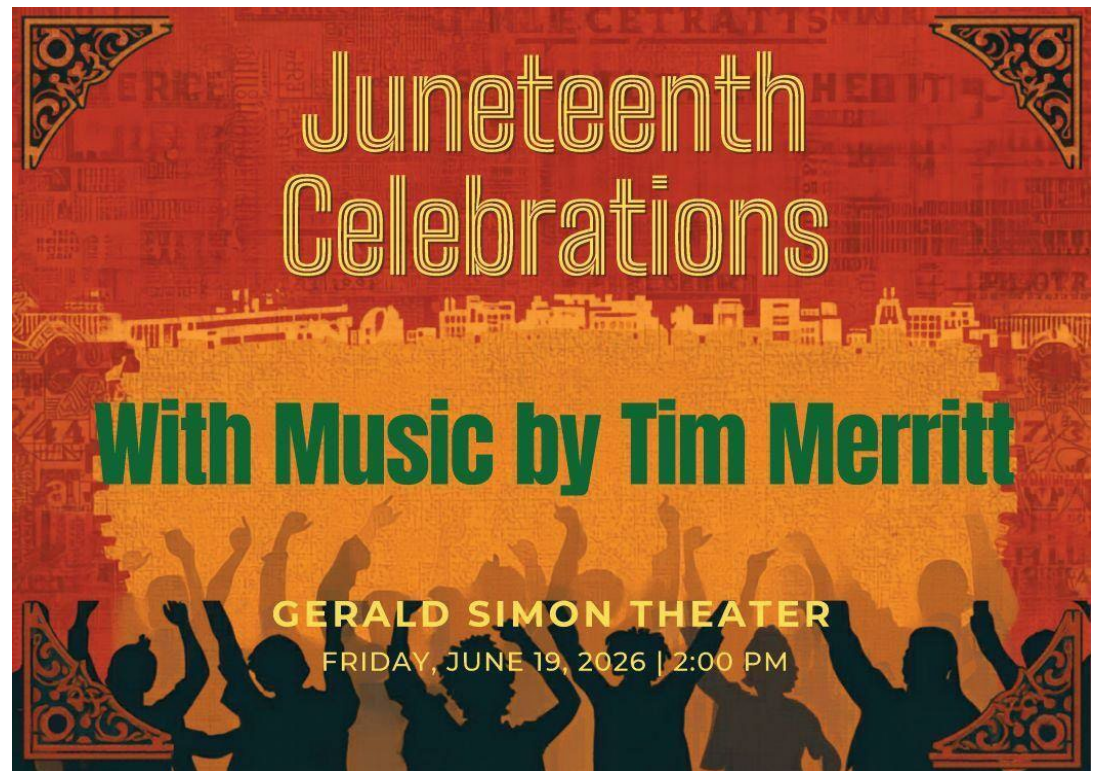


Celebrating Juneteenth at Laguna Honda

▶ Juneteenth celebrations



Juneteenth Celebration Menu



Juneteenth Concert



Celebrating PRIDE: Health Access For All

PRIDE at LHH

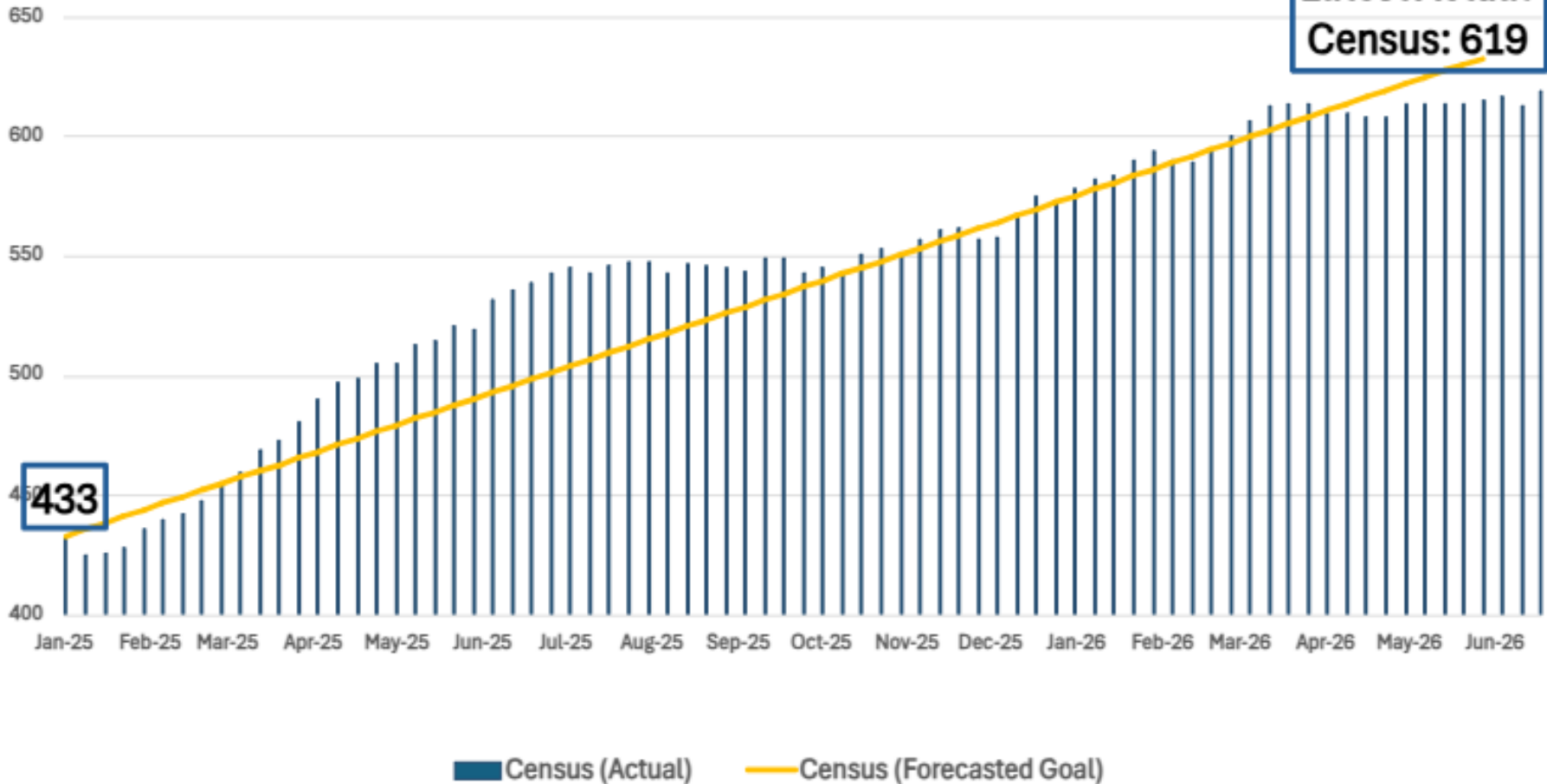


Admissions Update

Actual v. Forecasted Census Goal of 636 occupied beds by May 31, 2026.
Last Updated: 7/2/26

Goal: 636

Latest Actual
Census: 619

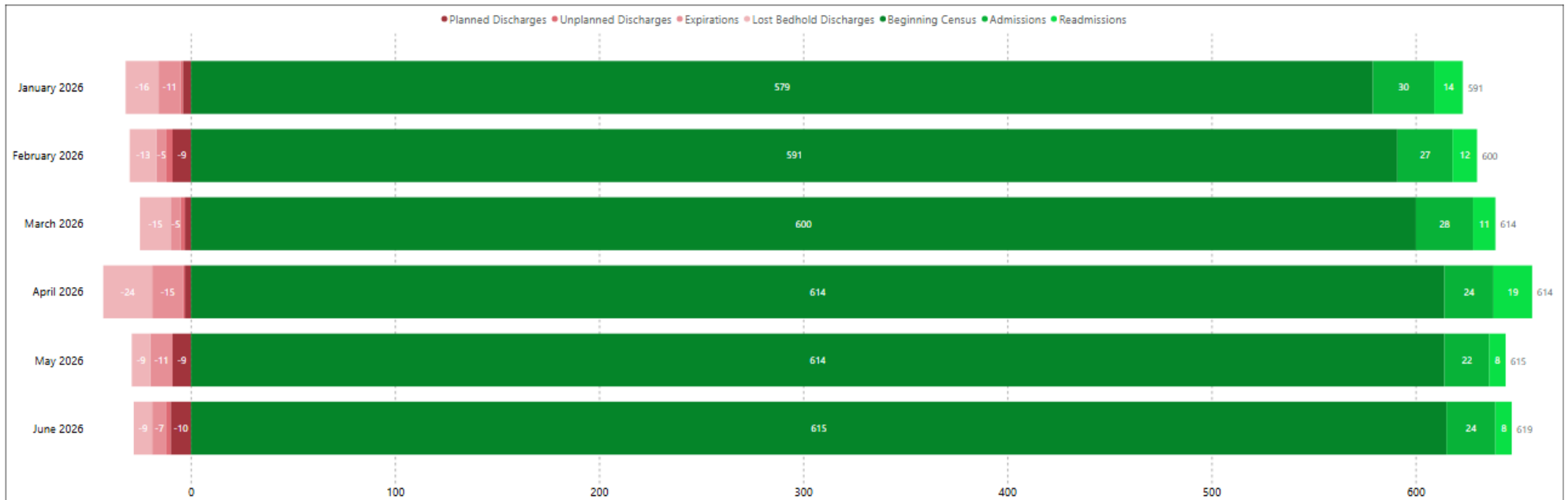


State of the Hospital



Admissions, Discharges, and Expirations

State of the Hospital (Last 6 Months)



Admissions
155

Unplanned Discharges
9

Planned Discharges
38

Readmissions
72

Expirations
54

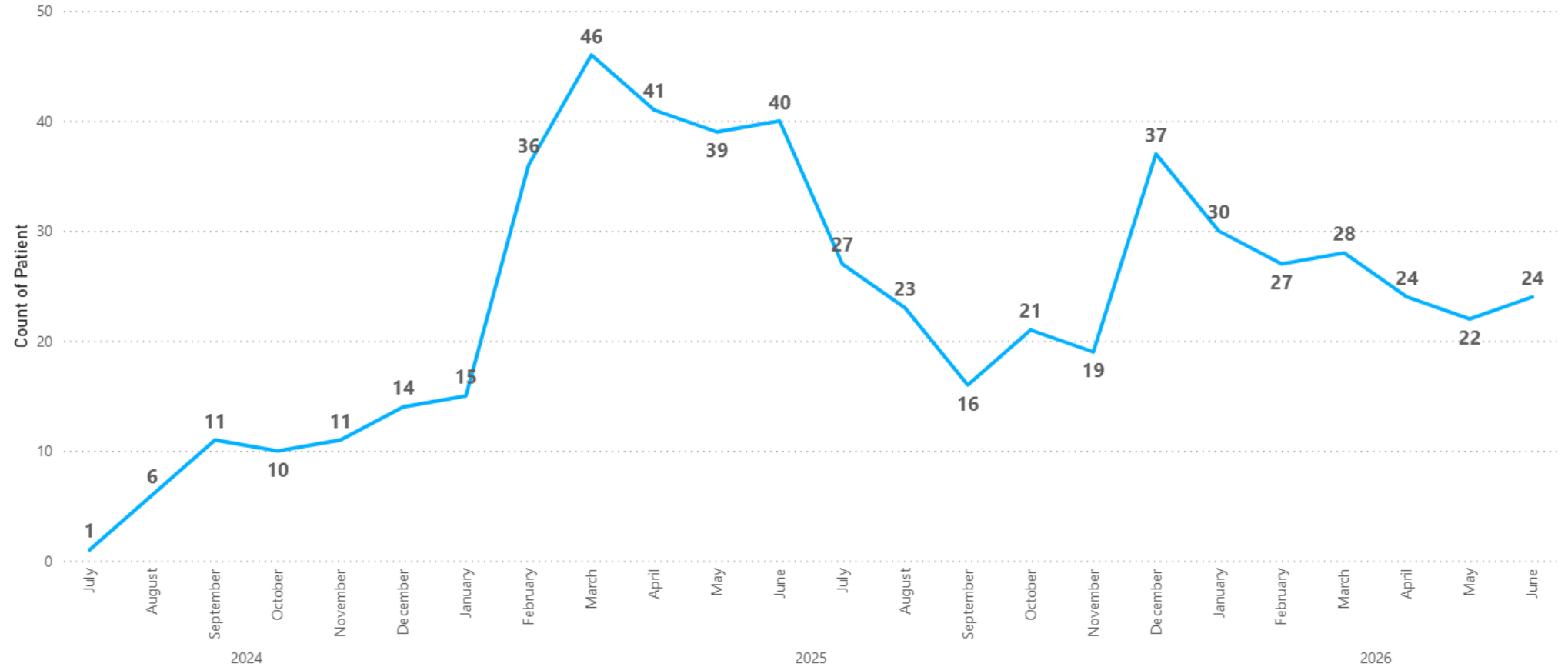
Lost Bedholds
86

Metric	January 2026	February 2026	March 2026	April 2026	May 2026	June 2026
Beginning Census	579	591	600	614	614	615
Admissions	30	27	28	24	22	24
Readmissions from Lost Bedholds	14	12	11	19	8	8
Planned Discharges	4	9	3	3	9	10
Unplanned Discharges	1	3	2	1	0	2
Expirations	11	5	5	15	11	7
Lost Bedholds	16	13	15	24	9	9
Net Flow	12	9	14	0	1	4
Ending Census	591	600	614	614	615	619



Admissions Update

New Admissions By Month

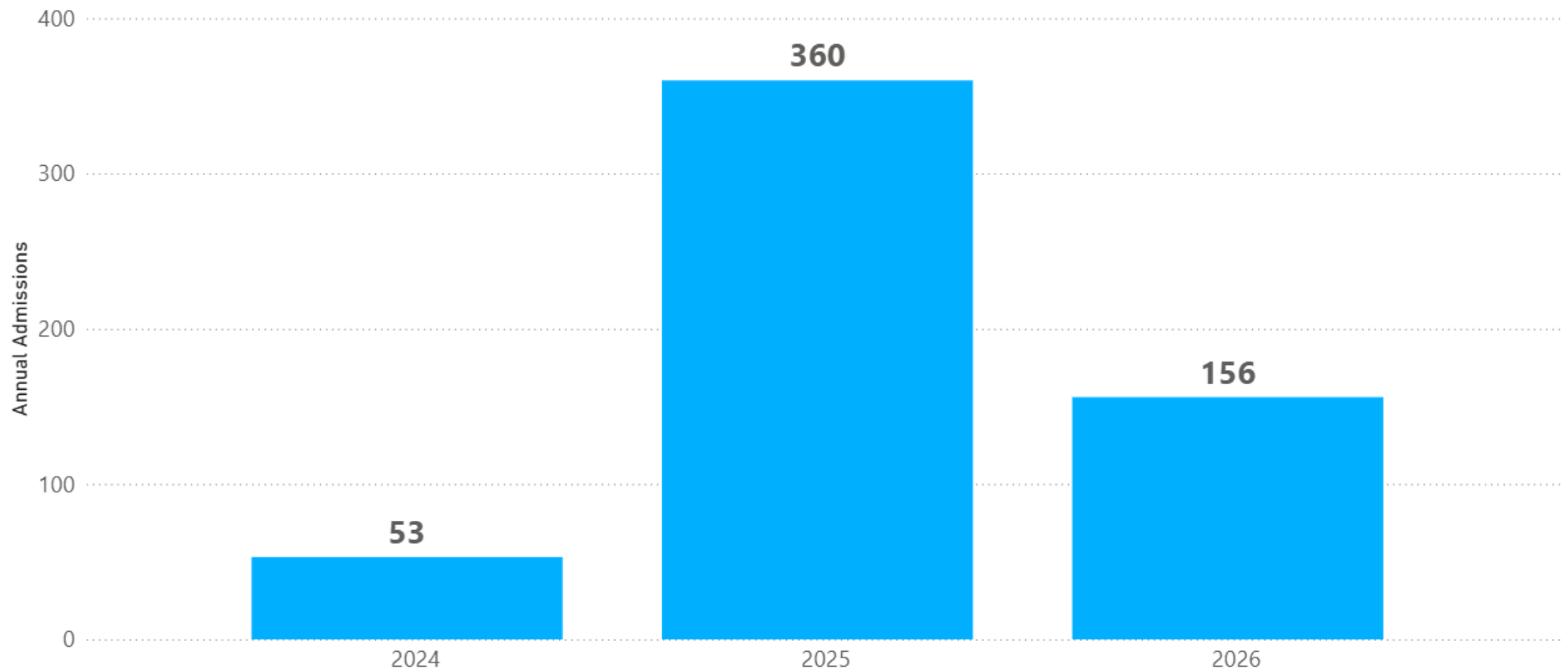


Last updated: 7/3/26



Admissions Update

New Admissions By Year



Note:

2024 admission started in July 2024.

2025 admission is for the entire year.

2026 admission is for the first six months.

Last updated: 7/3/26



Admissions Update



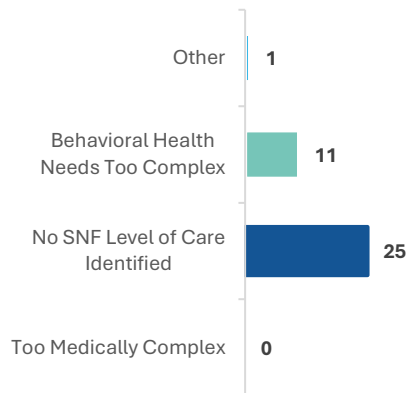
Most referrals were appropriate

June 2026 information

- Over the past six weeks, **43** referrals were denied of a total of **108** complete referrals.

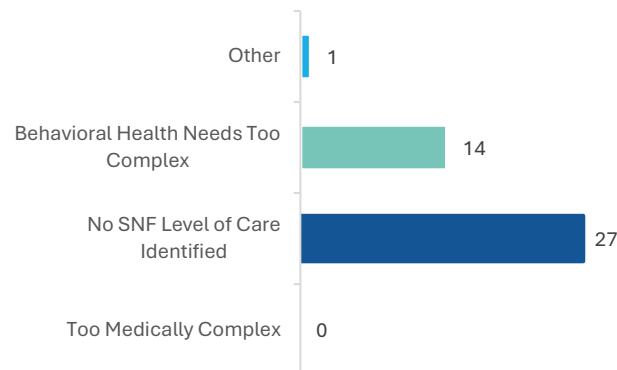
April 2026

Reason for Denied Applications
Mar. .23rd- May 3rd 2026



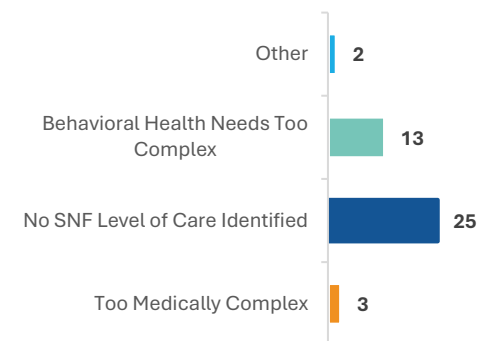
May 2026

Reason for Denied Applications
Apr.20th-May 31st 2026



June 2026

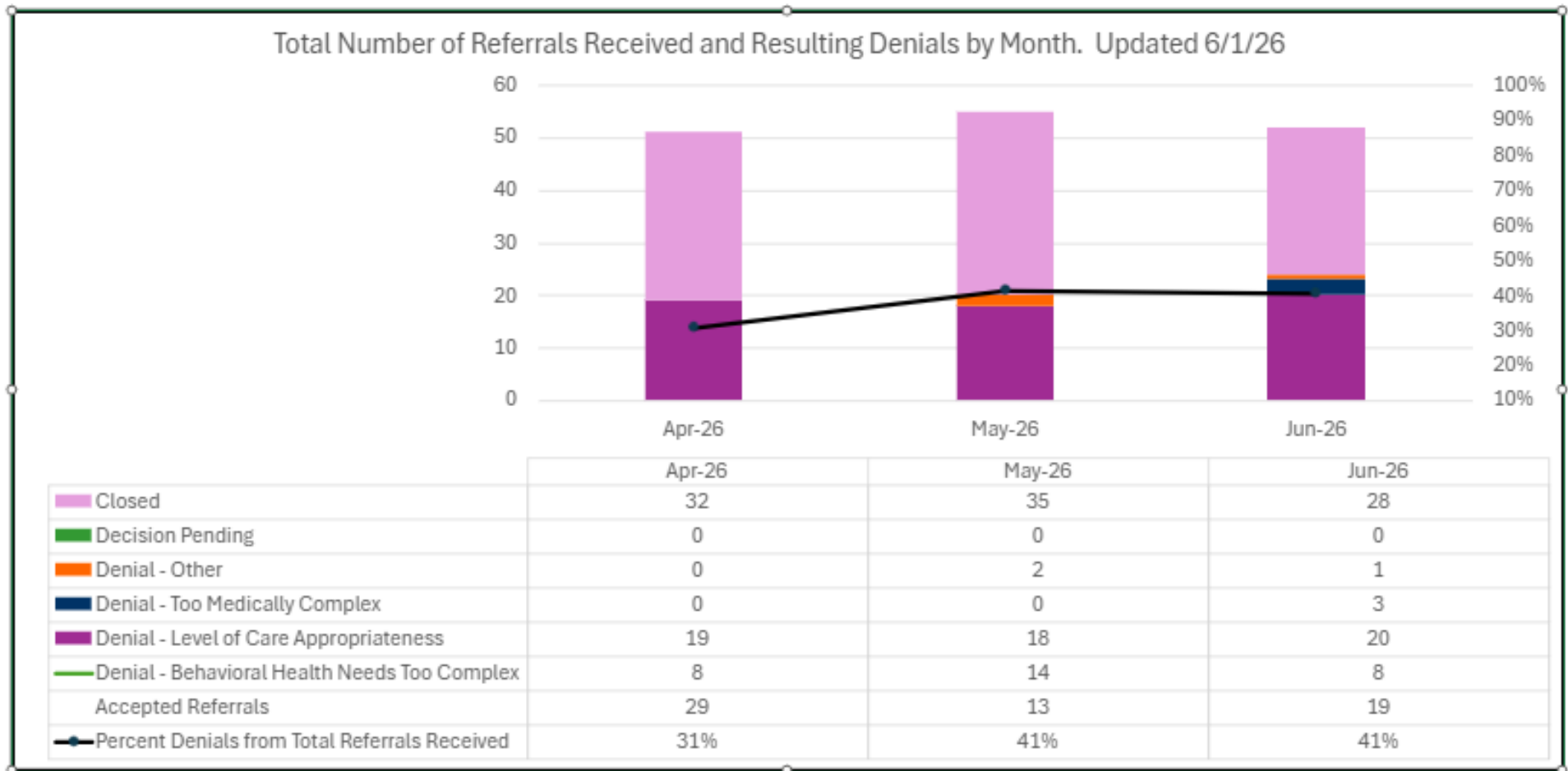
Reason for Denied Applications
May 25th-July 5th 2026



Admissions Update



Trend Line for Denials



Admissions Update

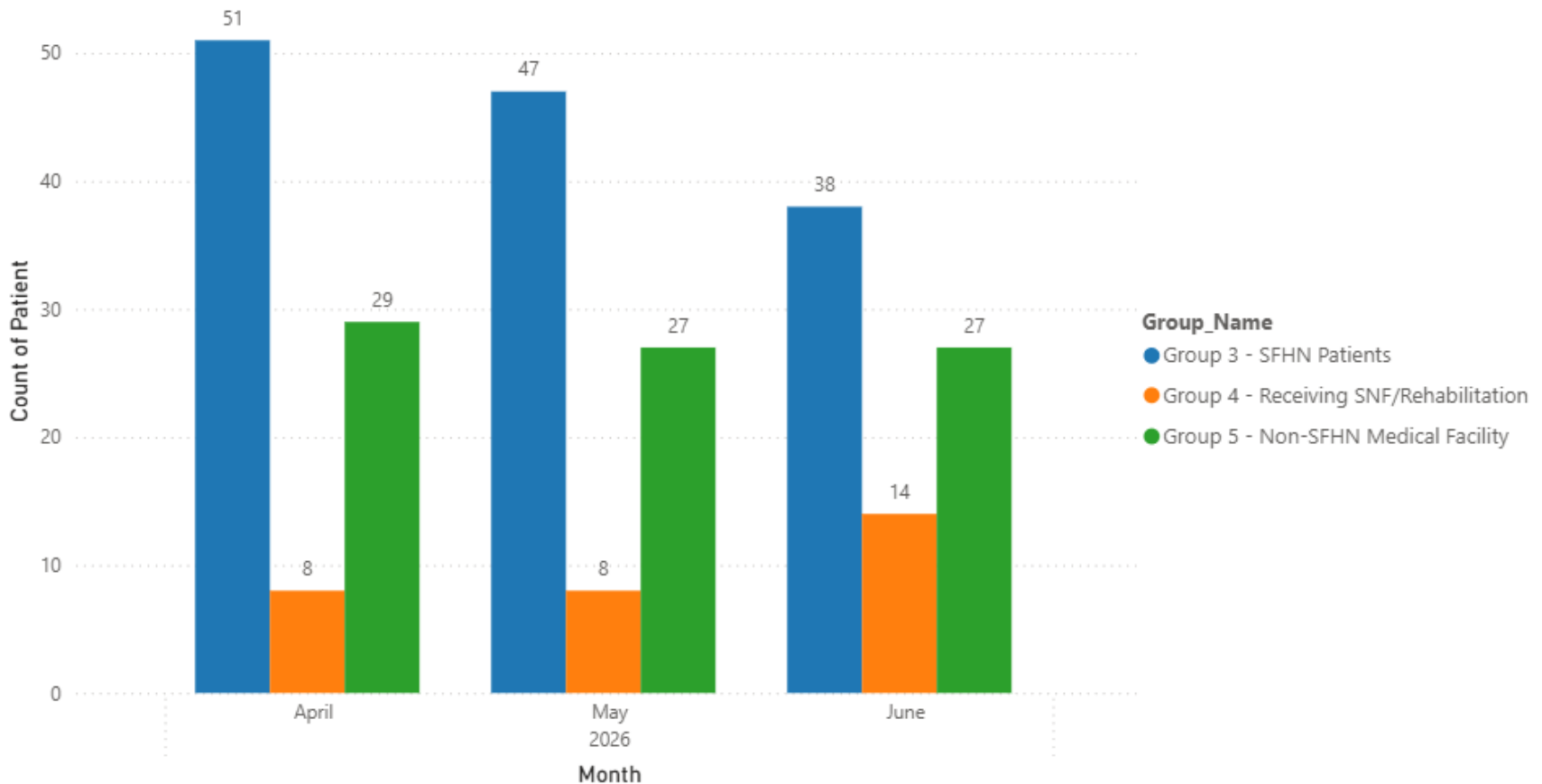
Referring Organizations by Priority Group

Count of Referrals by Group

This chart shows the number of referrals received over time, by Group

Last updated: July 3, 2026

Note: The most recent month shown contains partial data because the month is not yet complete as of this update.



Admissions Update

Admissions Data 07/01/2024 - 06/30/2026

Admissions Data

Groups	Accepted*	Closed/With drawn	Denied	In Progress	Total
Priority #1: Former LHH Residents	6	0	2	0	8
Priority #2: Not in Medical Settings	3	1	5	0	9
Priority #3: SFHN Patients	255	173	143	0	571
Priority #4: Receiving SNF/Rehabilitation	117	31	76	0	224
Priority #5: Non-SFHN Medical Facilities	203	167	231	0	601
Total	584	372	457	0	1413

*Accepted Includes both Admitted residents and those not yet admitted but approved.





San Francisco Health Network
Laguna Honda Hospital
and Rehabilitation Center

Questions?

