



For Immediate Release

Date: May 7, 2026

Contact: Angela Yip, 628-219-9894, angela.yip@sfgov.org

*****PRESS RELEASE*****

City Administrator Carmen Chu appoints Sheela Jivan as Executive Director of Treasure Island Development Authority

Jivan will bolster economic and community development on Treasure Island, expanding housing, open space, and mixed-use projects in the emerging waterfront community.

SAN FRANCISCO, CA---Today, City Administrator Carmen Chu announced the appointment of Sheela Jivan as Executive Director of the Treasure Island Development Authority. Jivan currently serves as the Associate Director/Chief Operating Officer of the Turner Center for Housing Innovation at UC Berkeley. Jivan brings 30 years of experience managing large-scale, mixed-use urban developments, affordable housing, and community planning.

As Executive Director, Jivan will oversee the development of Treasure Island and neighboring Yerba Buena Island, including the delivery of major infrastructure, new housing, transit connections, and public spaces.

“As San Francisco works to stand up more housing so that the next generations of San Franciscans can afford to stay in the city they love, the success of Treasure Island will be critical to meeting that need,” said **Mayor Lurie**. “Sheela Jivan’s expertise in housing and community development will be key to moving the work on Treasure Island forward. I look forward to working with her to ensure the community continues to grow into a thriving, connected neighborhood with homes, open space, and opportunity for all.”

“On Treasure Island, we have a once-in-a-generation opportunity to co-create sustainable, community-centered neighborhoods designed for the growth of future generations and to care for San Franciscans living on the Island today,” said **City Administrator Carmen Chu**. “Sheela’s expertise in real estate development, her strategic approach and her collaborative leadership will be pivotal as we move into the next phase of our work. I am excited to bring on a partner that is as fired up and energized by the possibilities in front of us as I am and am confident that she will build upon the strong momentum we see on Treasure Island and Yerba Buena Island.”

“As Treasure Island continues to grow, I’m excited to welcome a leader like Sheela, who brings a strong track record of listening to communities and transforming their input into action,” said **District 6 Supervisor Matt Dorsey**. “Her experience leading complex development projects to success will be critical to advancing the next phase of development on Treasure Island. Treasure Island is one of the most ambitious development projects San Francisco has seen in decades, and I look forward to working closely with Sheela to make sure our promises are delivered.”

Over 1,200 new market-rate and affordable homes have been completed on Treasure Island and Yerba Buena Island. Last year, Treasure Island saw the opening of a brand-new waterfront park, [Cityside Park](#), and the groundbreaking of a [new training center for Bay FC](#), the Bay Area's National Women's Soccer League team. Future plans include approximately 7,000 additional units of housing, both affordable and market-rate, and hundreds of more acres of parks and open space.

In 2026, the islands are on track to hit major development milestones, including the groundbreaking of several housing projects. Construction will begin on a 100%-affordable 100-unit senior housing building and a new behavioral health facility. Two new parks—Clipper Cove Park with beachfront access and Chapel Grove Park surrounding the historic Navy chapel—are set to open, adding to the existing world-class recreation space already open to the public. The Treasure Island Water Resource Recovery Facility will begin operation as part of a larger effort to replace aging Naval infrastructure with new systems and facilities prepared to serve residents into the future. By the end of the summer, Bay Wheels bikeshare services will be available on both islands, with new public transportation connections and enhancements in pedestrian and cycling pathways in progress to be completed in 2027.

"I am deeply honored to pick up the leadership mantle from my esteemed predecessor Bob Beck and join TIDA, the office of the City Administrator and the City and County of San Francisco team," said **Sheela Jivan**. "Together, with our many partners, we have a new, vibrant, world class San Francisco mixed-use, mixed-income neighborhood to complete which welcomes and beckons everyone to its beautiful setting."

As Associate Director/COO of the Turner Center for Housing Innovation, Jivan has led finance, operations, strategic planning, communications, and human resources for one of the nation's leading housing research and policy organizations. She has played a key role as lead liaison to UC Berkeley and the College of Environmental Design, strengthening institutional partnerships and supporting the Turner Center's long-term impact.

Jivan's career spans other major land use transformations and large-scale affordable housing delivery. Prior to joining the Turner Center, Jivan served as a Director of Global Real Estate Development at Google where she led a large team working on the 80-acre Downtown West Project, a transit-oriented district development effort in San Jose. This master plan included 7.3 million square feet of office, 4,000 market rate and affordable housing units, 15 acres of parks, 500,000 square feet of retail, arts and cultural spaces to the region and the establishment of a \$150 million community stabilization and opportunity pathway fund rooted in social equity and community participation.

As a managing agent for Lennar with FivePoint, she directed the Concord Naval Weapons Station Reuse Project---a 13,000-unit master-planned community similar to Treasure Island in size, complexity, and scale. She previously spent two decades in San Francisco at Mercy Housing California, where she led the development of 12 ground-up affordable housing projects and executed 13 land acquisitions and renovations across the state. Jivan established and led a new department to recapitalize and renovate Mercy's portfolio of 140 properties in San Francisco and across California, which centered improving the quality of life for the resident community.

"Sheela Jivan brings decades of experience in complex real estate development and is widely respected by her peers across the industry," said **Linda Fadeke Richardson, TIDA Board Chair**. "As we look ahead, Sheela steps into this critical role at a pivotal moment for San Francisco. The

Treasure Island and Yerba Buena Island projects are central to addressing the city's housing needs and advancing its broader economic revitalization, with plans to deliver thousands of new housing units. This is ambitious work that demands both vision and disciplined execution, and I look forward to welcoming Sheela to the team. I would also like to recognize her predecessor, Bob Beck, for his outstanding contributions and for establishing the strong foundation on which we continue to build."

"One Treasure Island is excited to welcome Sheela Jivan as the new Director of the Treasure Island Development Authority. Over more than 30 years, One Treasure Island has invested deeply in this innovative effort to build San Francisco's newest mixed-income community through a strong public-private partnership," said **Nella Goncalvez, Executive Director of One Treasure Island**. "Our collaboration with TIDA leadership has been central to advancing affordable housing and community planning, and we look forward to continuing this work with Sheela at the helm. Her experience and proven leadership give us confidence that she will be a transformative force for advancing the redevelopment of Treasure Island and Yerba Buena Island."

"Sheela brings a deep understanding of equitable development and a proven ability to deliver complex, large-scale, mixed-use projects," said **Tiffany Bohee, President of Mercy Housing California President**. "Having partnered with her on past projects and as witness to the impact of her two decades at Mercy, I've seen firsthand her commitment to hearing the community and getting results. I'm excited to see her build on the strong foundation already in place and help shape Treasure Island into an inclusive, vibrant neighborhood for generations to come."

Jivan holds a dual master's degree in Public Health and City & Regional Planning and a Bachelor of Arts in Anthropology, all from UC Berkeley.

Jivan's appointment is effective in June. Her appointment comes after an extensive search to replace long-time Treasure Island Director, [Bob Beck](#), who retired this January after over 30 years of public service. TIDA Deputy Director Jamie Querubin has served as acting director since Beck's retirement.

About Treasure Island Development Authority

The Treasure Island Development Authority (TIDA) is a non-profit, public benefit agency dedicated to the economic development of the former Naval Station on Treasure Island, transforming the islands into a growing, mixed-use community. TIDA works collaboratively with private development partners at Treasure Island Community Development and community-based organizations, including One Treasure Island, to deliver resident-oriented infrastructure and services.

###

**Treasure Island Development Authority
Subleases and Permits Executed
Pursuant To Leasing Policy
As of May 8, 2026**

1,583	B-62	New	Vostoc LLC	4/1/26	Office/storage	PA: 1,645 sf PB: 200 sf	\$37,200.00
1,584	Land at 8 th and N	New	F.D. Tomas, Inc.	5/1/26	Storage	44,000 sf	\$180,000.00
E-475	Ferry Dock	New	Golden Gate Scenic Steamship Corporation	4/22/26	Ferry Landing	NA	\$250.00
E-476	Ferry Dock	New	Golden Gate Scenic Steamship Corporation	4/18/26	Ferry Landing	NA	\$1,500.00
E-477	City Side Park	New	TICD	4/30/26	Event	NA	\$250.00
E-478	Lot at 12 th and D	New	Opulent Temple LLC	4/1/26	Parking/Storage	NA	\$900.00
E-479	City Side Park	New	SF Symphony	5/8/26	Photo	NA	\$500.00
E-480	Ferry Dock	New	Golden Gate Scenic Steamship Corporation	5/6/26	Ferry Landing	NA	\$250.00

CITY & COUNTY OF SAN FRANCISCO

TREASURE ISLAND DEVELOPMENT AUTHORITY

ONE AVENUE OF THE PALMS
BLDG. ONE, 2ND FLOOR, TREASURE ISLAND
SAN FRANCISCO, CA 94130
(415) 274-0660 FAX (415) 274-0299
WWW.SFTREASUREISLAND.ORG



ROBERT P. BECK
TREASURE ISLAND DIRECTOR

To: Treasure Island Development Authority Board of Directors

From: Bob Beck, Treasure Island Director

Date: May 8, 2026

Re: Use Permit and Film Permit Waivers

-
- No waivers issued this month

TI02 - Summary of Cases in TIDA Jurisdiction

OPEN

ID	Opened Date	Type	Category	Nature of Request	Location	Description	Agency
101002002323	5/29/2025 6:25:48 PM	Request for City Services	request_for_city_service	fire_department	INTERSECTIO N 9TH TI ST, AVENUE B, SAN FRANCISCO, CA 94130	Call box is making long beeping sounds and the box mentions to contact the SFFD if it's long beeps and not short ones, please respond to inspect.	Administration
101002425429	8/13/2025 10:19:43 AM	Internal SR			INTERSECTIO N 6TH TI ST, AVENUE M, SAN FRANCISCO, CA 94130	plack metal phone company box fell off wire and is on the ground	BSES
101002653751	9/22/2025 3:23:08 AM	Request for City Service- Street lane markers/wordin g	request_for_city_service	municipal_trans portation_agenc y	Missing paint on speed bumps where people walk and roll with strollers, walkers and canes, plus cyclists and pedestrians. Please paint these speed bumps for disability and awareness that	Treasure Island Development Authority	TIDA
101002816063	10/18/2025 3:00:48 PM	Graffiti Public	pw_graffiti	not_offensive	1400 STURGEON ST, SAN FRANCISCO, CA 94130	Tagging on large sidewalk utility signal box; please remove graffiti. Reported with Solve SF.	BSES

101002824278	10/20/2025 10:44:28 AM	Damage Property	pw_damaged_property	fire_police_callbox	INTERSECTION AVENUE OF THE PALMS, 9TH TIL ST, SAN FRANCISCO, CA 94130	caller reports that the fire call a long beeping noise	DT
101003256981	1/5/2026 2:41:53 PM	Sidewalk and Curb	pw_street_side_walkdefect	pavement_defect	INTERSECTION AVENUE B, GATEVIEW AVE, SAN FRANCISCO, CA 94130	On the intersection of Gateway avenue and Avenue B there is a large pothole that is dangerous I saw someone lose control over their car there.	BSSR
101003362680	1/22/2026 1:43:30 PM	Street Defect	pw_street_side_walkdefect	pavement_defect	1224 BAYSIDE DR, SAN FRANCISCO, CA 94130		BSSR
101003362706	1/22/2026 1:45:54 PM	Street Defect	pw_street_side_walkdefect	pavement_defect	INTERSECTION AVENUE B, GATEVIEW AVE, SAN FRANCISCO, CA 94130		BSSR
101003473378	2/9/2026 7:11:40 PM	Street Defect	pw_street_side_walkdefect	pavement_defect	1209 BAYSIDE DR, SAN FRANCISCO, CA 94130	Multiple potholes in front of the building next to parking	BSSR
101003536815	2/21/2026 2:57:26 AM	Sewer	puc_sewer	flooding	1420 STRIPED BASS ST, SAN FRANCISCO, CA 94130	Street is flooded at 1418 striped bass and Sturgeon on treasure Island	BSES
101003775593	3/30/2026 12:30:07 PM	Tree Maintenance	pw_tree_maintenance	overgrown_tree	1243 NORTH POINT ST, SAN FRANCISCO, CA 94130	Main power line is obstructed, bent at 90 degree angle.	TIDA
101003796533	4/2/2026 1:31:31 PM	Sidewalk and Curb	pw_street_side_walkdefect	pavement_defect	INTERSECTION AVENUE F, END (000 block of), SAN FRANCISCO, CA 94130	Potholes	BSSR

101003798462	4/2/2026 5:47:02 PM	MTA Parking Traffic Signs High Priority	mta_signs	street_name	1441 CHINOOK CT, SAN FRANCISCO, CA 94130	This busy intersection of 9th street & Seven Seas Avenue has no street signs at all, other than traffic controls. This creates confusion for new visitors because even Google maps has the routing wrong with the changing streets on our evolving island. Can we please have a couple of signs posted to better direct people, instead of using landmarks to give people directions by? Thanks!	TIDA
101003955523	4/28/2026 1:18:41 PM	Street Defect	pw_street_side walkdefect	pavement_defect	1209 BAYSIDE DR, SAN FRANCISCO, CA 94130		BSSR
101003966629	4/30/2026 9:20:10 AM	Litter Receptacle Maintenance	pw_litter_receptacles	toters_left_out_24x7	850 AVENUE E, SAN FRANCISCO, CA 94130	I am reporting a blue recycling bin that has remained on the sidewalk/curb for over a week. It was placed out for its regularly scheduled pickup, but it has been bypassed by Recology.	BSES

TI Advisor Board Report

May 2026

Households Living at The Villages at Treasure Island			
THRR Status	Household Count Last Month	Household Count This Month	Resident Count (Adults)
Legacy and Mixed	212	90	164
Vested	160	105	248
Post-Vested	0	24	82
Corporate	32	35	56
Total	404	254	550

Engagement Summary

TI Advisors continue to offer support to Legacy and Vested Residents as they consider future housing options. TI Advisors are available to meet with residents on the island, virtually, or by phone during regular business hours, in the evening, or even on weekends. Our goal is to communicate with residents in their preferred language and in a comfortable setting, so they can discuss their living situation and goals for future housing.

TI Advisors also engage with the larger community to support general requests for information that come in to TI Advisors by phone or email. TI Advisors provide information about MOHCD's DAHLIA program and future housing opportunities on the Island.

TI Advisors have an electronic calendar link: This link is included in all communications, making it easy and convenient to schedule a meeting with a TI Advisor: <https://calendly.com/tiadvisor/meeting>

TI Advisors are working with The Villages and the TIDA team to fully analyze and report resident Transition Housing choices between 2018 and 2026. The analysis will be included in the June TI Advisor Board Report.

What future housing options are available for Legacy Households?

Legacy Households are offered Transition Housing based on Legacy Household Rank order. Legacy Households may choose from the following housing options, which include:

- **Transition Unit.** Legacy Households may accept the offer of a Transition Unit and receive assistance with moving costs.

Transition Housing Options Include

- Star View Court (3 Transition Units currently being filled)
- The Senior Housing Building (6 Transition Units available in 2028)
- IC4.3 (30 Transition Units available in 2028)



- **In Lieu Payment.** Legacy Residents may choose to move from The Villages and request a Payment In Lieu of a Transition Unit.
- **Affordable Housing.** Legacy Residents may utilize the Treasure Island Resident (TIR) Preference to rent or purchase affordable housing on the Island and request a Payment In Lieu of a Transition Unit or Downpayment Assistance.
 - Bristol Below Market Rate Condominium is for sale now
 - The Senior Housing Building will have 60 Affordable Units for rent in 2028
 - IC4.3 will have 59 Affordable Units for rent in 2028

What future housing options are available for Vested Residents?

Vested Residents may utilize the Treasure Island Resident (TIR) Preference to rent or purchase affordable housing on the Island. Residents should meet with a TI Advisor for additional information about signing up for MOHCD's DAHLIA housing opportunities for the Affordable Units described above.

490 Avenue of the Palms: MOHCD's offer of affordable housing opportunities at 490 Avenue of the Palms has been delayed. Additional information about this exciting development will be shared when it is available.





One Treasure Island Program Report

Nella Goncalves, Executive Director
May 2026

One Treasure Island Programming:

Recruitment for CTP 23. There are currently 30 candidates in the que. The Job Readiness Training begins in June and CTP 23 formally in July.

The Spring Fling Health & Wellness Fair was held on April 25th. The weather was gnarly so we were pleased to have over 200 individuals attend the event. There were 30 vendors. Including the HR360 Mobile Medical Van, The magic Tooth Bus, NAMI, pet grooming and lots more. programming has been implemented. We also had 5 representatives for the City join us and that was a wonderful surprise!

We are excited to host monthly Senior Health & Wellness programming and a Sip, Sip Hooray Coffee Hour. We invited the community and TIDA BOD to join us!

This year, we completed 106 Tax Returns with \$174,651 in total refunds. Participants saved \$49,926 in total by using our free service.

One TI Ambassadors continue to be trained, and they have already begun to operate the weekly food pantry and community outreach.

Outreach & Social Media

Outreach and social media activities continue. Ambassadors will begin to flier mailboxes and outreach at Island Cove Market and other locations in May.

Community Engagement & Events

- **Senior Wellness Wednesday:** Every second Wednesday of the month. From 12-2 May 13th, Wednesday 12-2pm
 - **Coffee Hours is back at Sherry Williams Community Center:** Every third Thursday 9:30am – 11:00am (this month is May 21st)
 - **Juneteenth: (Save the date!)** Our next big event is Juneteenth on June 20th, Saturday 12-3pm at Cityside Park. Join us for Juneteenth celebration, enjoy delicious food, fun games, and an exciting Saturday with community.
-
-

- **National Alliance on Mental Illness (NAMI)** : Thursday, May 14th 6:00pm – 7:00pm
- **HealthRight 360 Mobile Medical Van**: Tuesday from 1:30pm - 4:30pm at the Sherry Williams Community Center parking lot.
- **Camp Mendocino**: Summer Camp for Island youth through TIDA funding

Special Programming & Projects

No updates

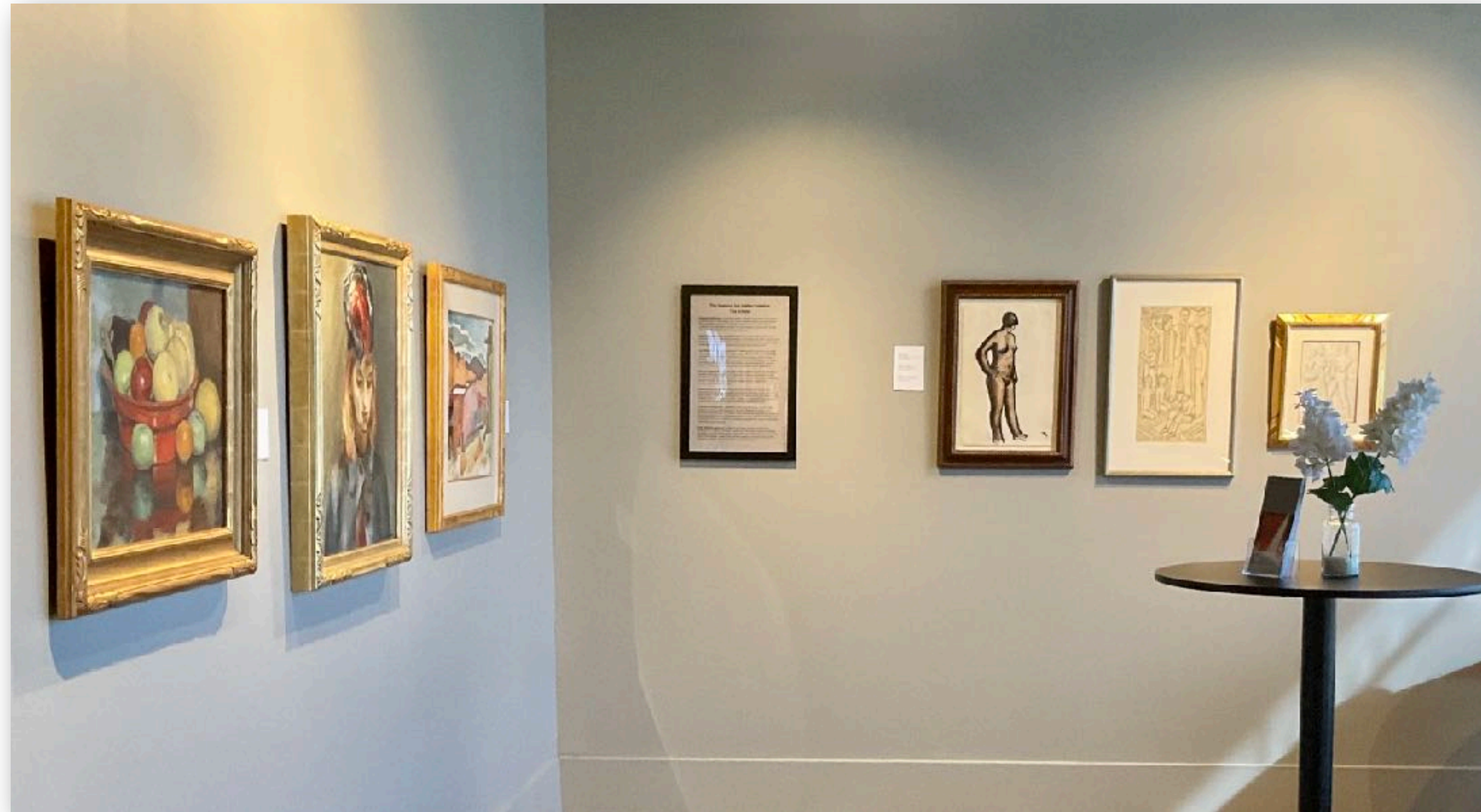
Treasure Island Museum

Report to TIDA ~ May, 2026



Since the last update, our staff and community volunteers have:

- **became a One Treasure Island Member Organization** and participated in their Spring Fling, leading activities for neighborhood children.
- **opened a new gallery**, doubling our exhibition space and allowing us to display more artifacts from our archives.
- **hosted tours of Building One and Treasure Island** for groups of students and seniors, as well as tours of our archives for members of Leadership SF.
- **published newsletters and brochures**, featuring answers to frequently asked questions, that promote Treasure Island as a destination neighborhood.



New gallery opens with a unique exhibition:

As Treasure Island Building One enjoys a renaissance and the island becomes a popular destination again, Treasure Island Museum has doubled our exhibition space. Our new gallery is in a prime location off the building's historic lobby, across from Gold Bar Whiskey's popular tasting room, and overlooking Clipper Cove.

The first exhibition in our new gallery features works exhibited at the Golden Gate International Exposition in the Palace of Fine and Decorative Arts in 1940.

Our service to the community continues:

Treasure Island Museum is proud to be among the cultural, intellectual, and artistic hubs on the revitalized island.

We maintain extensive, public archives of documents, photographs, and objects from the island's past.

Our free public gallery in Building One serves as the visitor center for those arriving by ferry, bus, or automobile. And our public monuments and informative wayside installations ensure that visitors leave with a more complete understanding of the historic significance of YBI and Treasure Island.

Our organization's long history of community service and engagement and our open-access online content are an integral part of what Treasure Island offers to both residents and tourists.

